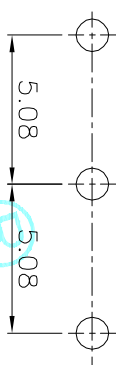
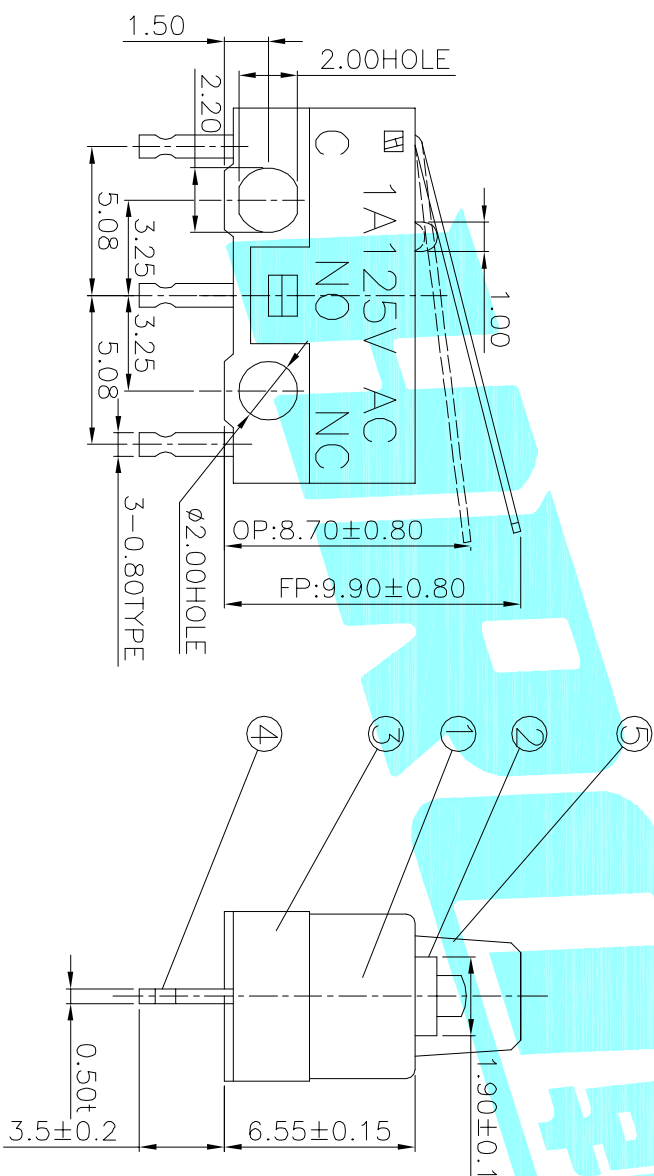


Circuit Diagram



P.C.B layout

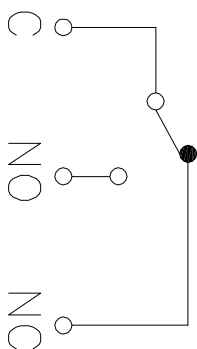
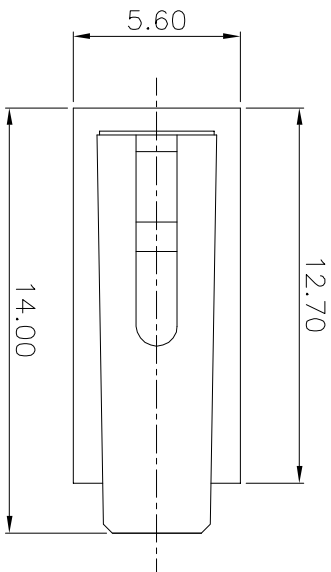


NOTE:
 1. Rating:DC30V 0.1A
 2.OP:8.70±0.8
 3.Operating force:30±15gf
 4.Mechanical Life:3,000,000

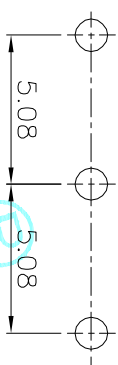
⑦	Shrapnel	1	Beryllium Copper			
⑥	Contact	1	Ag			
⑤	Lever	1	Stainless Steel			
④	Terminal	3	Bross(0.50t)	Plating silver		
③	Housing	1	PBT	White		
②	Knob	1	POM	Green		
①	Cover	1	PBT	Black		
ITEM	PART NAME	TER'NO.	QTY.	MATERIAL	FINISHING	REMARK

APPROVALS	DATE	ELECTRONICS CO.,LTD	
DRAWN	J.X.Zhang	2013/6/4	
CHECKED		TITLE: MICRO SWITCHS	
APPROVALS		PART NO. K9-1267H-G-13.1	

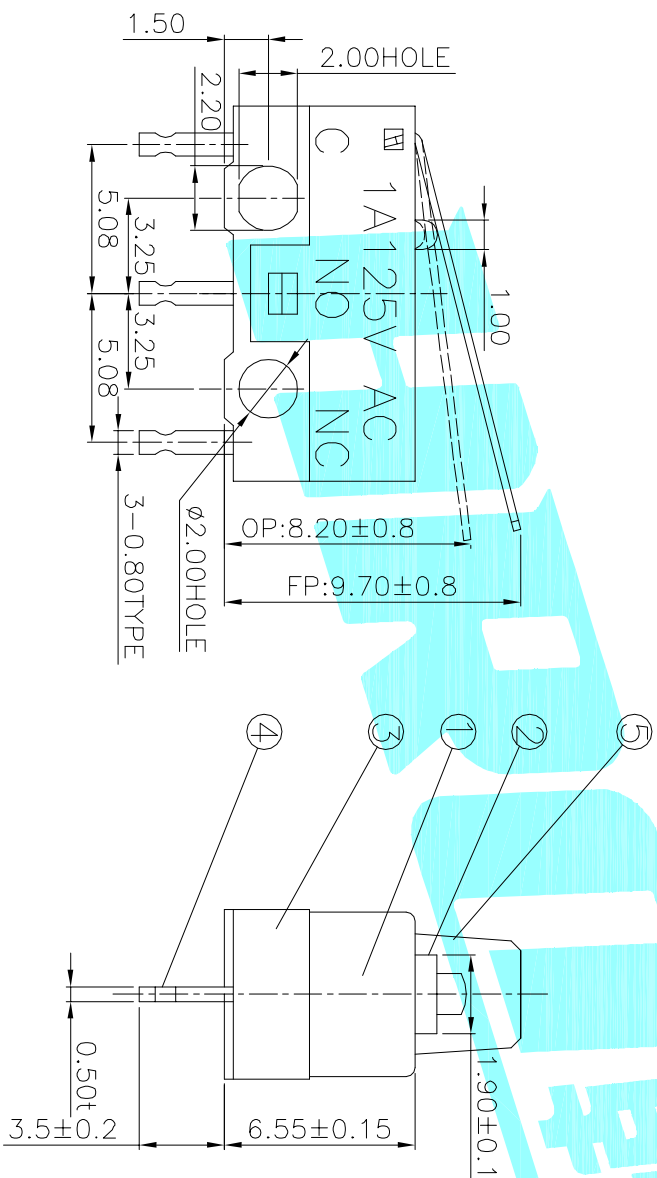
ECN NO.	REV.	DATE.	DESCRIPTION.	CHANGE.	CHECK.	APPRO.	TOLERANCES ARE	30~125 ±	±0.30	ANGLE	UNIT: mm	SCALE: 1:1	PROD.	SHEET
	A		NEW				10~30 ±	±0.20						1 OF 1
							5~10 ±	±0.15		±2°				
							~ 5 ±	±0.10						



Circuit Diagram



P.C.B layout



NOTE:
 1. Rating:DC30V 0.1A
 2.OP:8.20±0.8
 3.Operating force:30±15gf
 4.Mechanical Life:3,000,000

⑦	Shrapnel	1	Beryllium Copper			
⑥	Contact	1	Ag			
⑤	Lever	1	Stainless Steel			
④	Terminal	3	Bross(0.50t)	Plating silver		
③	Housing	1	PBT	White		
②	Knob	1	POM	White		
①	Cover	1	PBT	Black		
ITEM	PART NAME	TER'NO.	QTY.	MATERIAL	FINISHING	REMARK

APPROVALS		DATE	ELECTRONICS CO.,LTD		
DRAWN	J.X.Zhang	2013/6/4	MICRO SWITCHS		
CHECKED			PART NO. K9-1267H-D-13.1		
APPROVALS			TITLE: MICRO SWITCHS		

ECN NO.	REV.	DATE.	DESCRIPTION.	CHANGE.	CHECK.	APPRO.	TOLERANCES ARE	30~0.1t ±	±0.30	ANGLE	UNIT: mm	SCALE: 1:1	PROD.	SHEET 1 OF 1
	A		NEW				10~30 ±0.20	5~10 ±0.15	±2°					

X-ON Electronics

Largest Supplier of Electrical and Electronic Components

Click to view similar products for [Basic / Snap Action Switches](#) category:

Click to view products by [HRO parts manufacturer](#):

Other Similar products are found below :

[83228001](#) [01.098.1358.1](#) [602EN1-6B](#) [602EN532](#) [602EN535-RB](#) [602HE5-RB1](#) [604HE162](#) [604HE223-6B](#) [624HE17-RB](#) [6HM89](#) [6PA78-JM](#)
[6SE1](#) [6SX1-H58](#) [70500840](#) [MBD5B1](#) [MBH2731](#) [73-316-0012](#) [79211759](#) [79211923](#) [79218589](#) [7AS12](#) [ML-1155](#) [ML-1376](#) [831010C3.0](#)
[831060C3.TL](#) [831090C2.EL](#) [83131904](#) [84212012](#) [8AS239](#) [8HM73-3](#) [903VB1-PG](#) [914CE1-6G](#) [PL-100](#) [11SM1077-H4](#) [11SM1077-H58](#)
[11SM1-TN107](#) [11SM405](#) [11SM703-T](#) [11SM8423-H2](#) [11SX37-T](#) [11SX48-H58](#) [11SX55-H58](#) [11SM2442-T](#) [11SM76-T](#) [11SM77-H58](#)
[11SM77-T](#) [11SM863-T](#) [11SM866](#) [11SX47-H58](#) [A7CN-1M-1-LEFT](#)