

1. Description

The KIA78L06 is monolithic fixed voltage regulator integrated circuit. It is suitable for applications that require supply current up to 100mA.

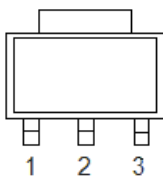
2. Features

- n Output current up to 100mA
- n No external part needed
- n Thermal overload shutdown protection
- n Short circuit current limiting
- n SOT89 package

3. Applications

- n Battery-powered circuitry
- n Post regulator for switching power supply

4. Pinning information



SOT-89 Front View

Pin	Description
1	V_{OUT}
2	GND
3	V_{IN}

5. Maximum ratings

(Ta=25°C, unless otherwise notes)

Parameter	Symbol	Rating	Units
Input voltage	V _{IN}	30	V
Power dissipation	P _D	500	mW
Junction temperature	T _J	-20~+125	°C
Operating temperature	T _{OPR}	-20~+85	°C
Storage temperature	T _{STG}	-65~+150	°C

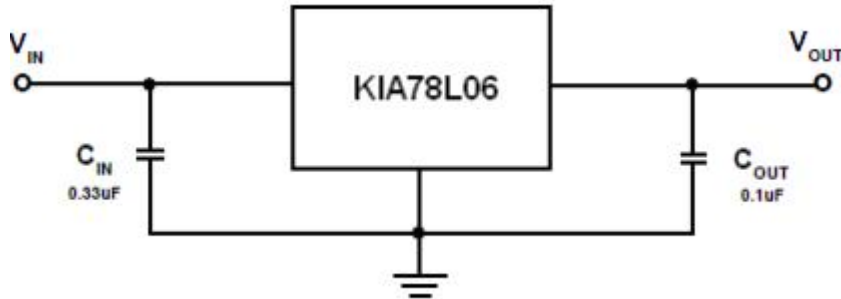
6. Electrical characteristics

(V_{IN}=11V, I_{OUT}=40mA, C_{IN}=0.33uF, C_{OUT}=0.1uF, T_J=25°C, unless otherwise notes)

Parameter	Symbol	Condition	Min	Typ	Max	Unit
Output voltage	V _{OUT}		5.76	6.0	6.24	V
		8.1V ≤ V _{IN} ≤ 21V 1.0mA ≤ I _{OUT} ≤ 40mA	5.70	6.0	6.30	V
		1.0mA ≤ I _{OUT} ≤ 70mA	5.58	6.0	6.42	V
Line regulation	Reg line	8.1V ≤ V _{IN} ≤ 21V	-	50	150	mV
		9.0V ≤ V _{IN} ≤ 21V	-	45	110	mV
Load regulation	Reg load	1.0mA ≤ I _{OUT} ≤ 100mA	-	12	70	mV
		1.0mA ≤ I _{OUT} ≤ 40mA	-	5.5	35	mV
Quiescent current	I _Q		-	3.1	6.0	mA
Quiescent current change	ΔI _Q	9.0V ≤ V _{IN} ≤ 20V	-	0.15	1.5	mA
		1.0mA ≤ I _{OUT} ≤ 40mA	-	0.08	0.1	mA
Output noise voltage	V _{ON}	10Hz ≤ f ≤ 100KHz	-	40	-	uV _{rm}
Ripple rejection ratio	RR	10V ≤ V _{IN} ≤ 20V, f=120Hz	39	47	-	dB
Dropout voltage	V _D		-	1.7	-	V

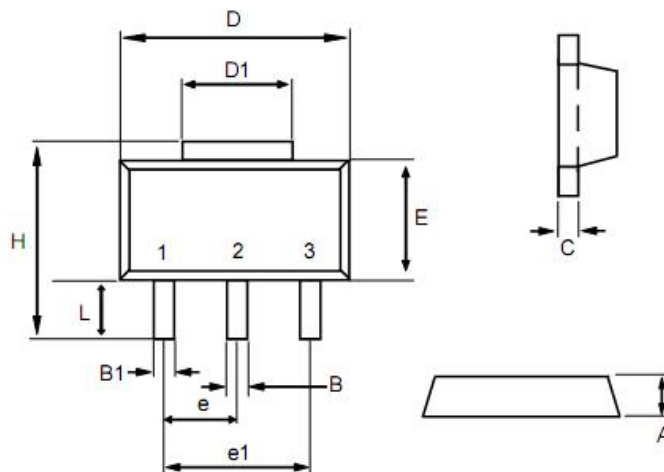
Note1: The maximum steady state usable output current is dependent on input voltage, heat sinking, lead length of the package and copper pattern of PCB.

7. Application circuits



Note1: The input voltage must remain typically 1.7V above the output voltage.
 Note2: Bypass capacitors are recommended for optimum stability and transient response and should be located as close as possible to the regulators.

8. Package outline



Dim	min	max
A	1.40	1.60
B	0.40	0.56
B1	0.35	0.48
C	0.35	0.44
D	4.40	4.60
D1	1.35	1.83
e	1.50 BSC	
e1	3.00 BSC	
E	2.29	2.60
H	3.75	4.25
L	0.80	1.20

1. Description

The KIA78L06 is monolithic fixed voltage regulator integrated circuit. It is suitable for applications that require supply current up to 100mA.

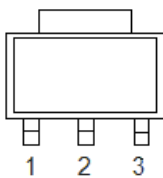
2. Features

- n Output current up to 100mA
- n No external part needed
- n Thermal overload shutdown protection
- n Short circuit current limiting
- n SOT89 package

3. Applications

- n Battery-powered circuitry
- n Post regulator for switching power supply

4. Pinning information



SOT-89 Front View

Pin	Description
1	V_{OUT}
2	GND
3	V_{IN}

5. Maximum ratings

(Ta=25°C, unless otherwise notes)

Parameter	Symbol	Rating	Units
Input voltage	V _{IN}	30	V
Power dissipation	P _D	500	mW
Junction temperature	T _J	-20~+125	°C
Operating temperature	T _{OPR}	-20~+85	°C
Storage temperature	T _{STG}	-65~+150	°C

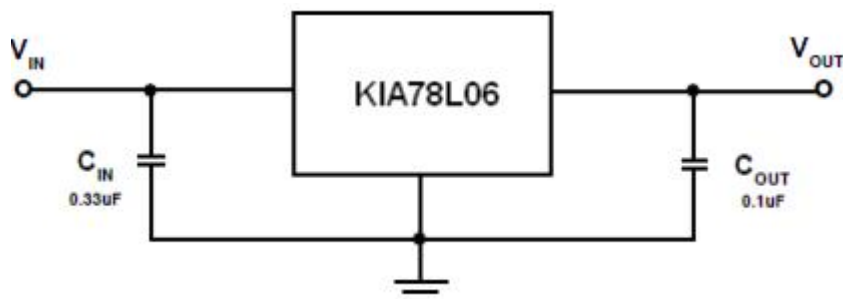
6. Electrical characteristics

(V_{IN}=11V, I_{OUT}=40mA, C_{IN}=0.33uF, C_{OUT}=0.1uF, T_J=25°C, unless otherwise notes)

Parameter	Symbol	Condition	Min	Typ	Max	Unit
Output voltage	V _{OUT}		5.76	6.0	6.24	V
		8.1V ≤ V _{IN} ≤ 21V 1.0mA ≤ I _{OUT} ≤ 40mA	5.70	6.0	6.30	V
		1.0mA ≤ I _{OUT} ≤ 70mA	5.58	6.0	6.42	V
Line regulation	Reg line	8.1V ≤ V _{IN} ≤ 21V	-	50	150	mV
		9.0V ≤ V _{IN} ≤ 21V	-	45	110	mV
Load regulation	Reg load	1.0mA ≤ I _{OUT} ≤ 100mA	-	12	70	mV
		1.0mA ≤ I _{OUT} ≤ 40mA	-	5.5	35	mV
Quiescent current	I _Q		-	3.1	6.0	mA
Quiescent current change	ΔI _Q	9.0V ≤ V _{IN} ≤ 20V	-	0.15	1.5	mA
		1.0mA ≤ I _{OUT} ≤ 40mA	-	0.08	0.1	mA
Output noise voltage	V _{ON}	10Hz ≤ f ≤ 100KHz	-	40	-	uV _{rm}
Ripple rejection ratio	RR	10V ≤ V _{IN} ≤ 20V, f=120Hz	39	47	-	dB
Dropout voltage	V _D		-	1.7	-	V

Note1: The maximum steady state usable output current is dependent on input voltage, heat sinking, lead length of the package and copper pattern of PCB.

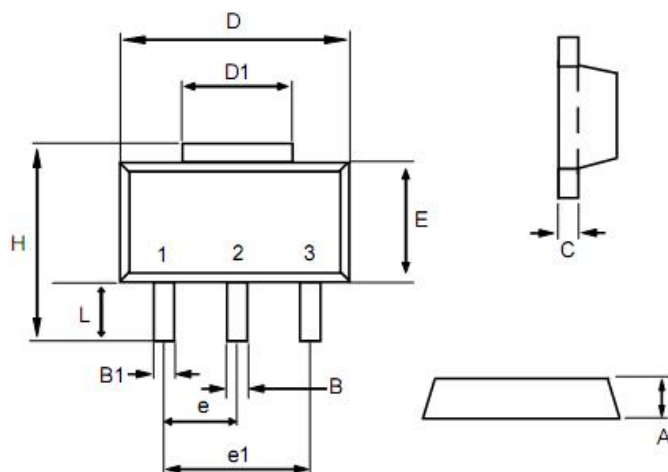
7. Application circuits



Note1: The input voltage must remain typically 1.7V above the output voltage.

Note2: Bypass capacitors are recommended for optimum stability and transient response and should be located as close as possible to the regulators.

8. Package outline



Dim	min	max
A	1.40	1.60
B	0.40	0.56
B1	0.35	0.48
C	0.35	0.44
D	4.40	4.60
D1	1.35	1.83
e	1.50 BSC	
e1	3.00 BSC	
E	2.29	2.60
H	3.75	4.25
L	0.80	1.20

X-ON Electronics

Largest Supplier of Electrical and Electronic Components

Click to view similar products for [Switching Voltage Regulators](#) category:

Click to view products by [KIA](#) manufacturer:

Other Similar products are found below :

[TLF30682QVS01XUMA1](#) [TPSM84209RKHR](#) [FAN53526UC106X](#) [FAN53526UC128X](#) [MP1587EN-LF](#) [FAN48610BUC33X](#)
[FAN48617UC50X](#) [FAN53526UC89X](#) [MIC45116-1YMP-T1](#) [NCV891234MW50R2G](#) [EN2342QI](#) [AST1S31PUR](#) [16017](#) [A6986FTR](#)
[NCP81103MNTXG](#) [NCP81203PMNTXG](#) [MAX17242ETPA+](#) [MAX16935RATEB/V+](#) [MP2313GJ-Z](#) [NCP81208MNTXG](#) [MP8759GD-Z](#)
[FAN53526UC100X](#) [FAN53526UC84X](#) [PCA9412AUKZ](#) [MP2314SGJ-Z](#) [AS1340A-BTDM-10](#) [MP3421GG-P](#) [NCP81109GMNTXG](#)
[MP6003DN-LF-Z](#) [MAX16935BAUES/V+](#) [LT8315IFE#PBF](#) [SCY1751FCCT1G](#) [NCP81109JMNTXG](#) [MAX16956AUBA/V+](#)
[AP3409ADNTR-G1](#) [FAN48623UC36FX](#) [MPQ2454GH](#) [MPQ2454GH-AEC1](#) [MP21148GQD-P](#) [AS3701B-BWLM-68](#) [MPQ2143DJ-P](#)
[MP9942AGJ-P](#) [MP8759GD-P](#) [MP5610GQG-P](#) [MP28200GG-P](#) [MP2451DJ-LF-Z](#) [MP2326GD-P](#) [MP2314SGJ-P](#) [MP2158AGQH-P](#)
[MP2148GQD-18-P](#)