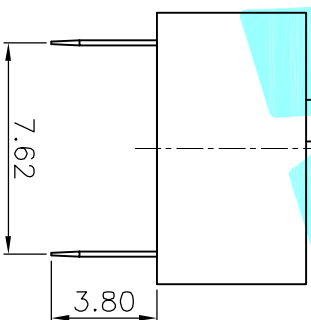
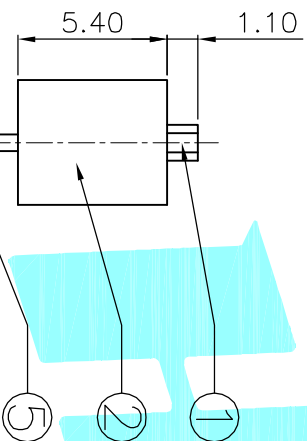
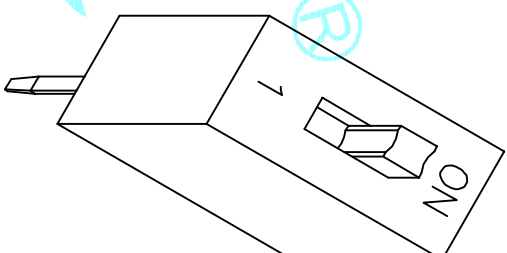
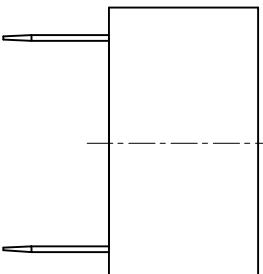


PCB Layout(Pattern Side)

Circuit Diagram



凸柄(P)



短柄(S)

- NOTE:
- 1.Rating: 24V 25mA DC
 - 2.Insulation Resistance: ≥100 MΩ
 - 3.Withstand voltage:AC 500V 1Minute
 - 4.Operating Force Range: 400gf Max
 - 5.Mechanical Life:3,000 Cycles
 - 6.Operating Temperature range -20°~+70°C
 - 7.Ambient Humidity used: ≤85%RH

PART NO.	凸柄(P)	DP-01RP
盖丁/红色(R)	短柄(S)	DP-01RS
PART NO.	凸柄(P)	DP-01BP
盖丁/蓝色(B)	短柄(S)	DP-01BS

ITEM	PART NAME	TER'NO.	QTY.	MATERIAL	FINISHING	REMARK
⑤	Terminal	—	2	Brass(0.30t)	—	—
④	Contact	—	1	F.Ag/SUS	—	—
③	Base	—	1	PBT	BLACK	—
②	Cover	—	1	PBT	RED/BLUE	—
①	Keystroke	—	1	PBT	WHITE	—

APPROVALS		DATE	TITLE: ELECTRONICS CO.,LTD	
DRAWN	J.X.Zhang	2013/5/30	MULTIFUNCTIONAL SWITCHES	

CHECKED		PART NO.		DS-01□□	
APPROVALS		UNIT: mm	SCALE: 1:1	PROJ:	
TOLERANCES ARE		30~0.15 ±0.30	ANGLE	DRAWING NO.	SHEET 1 OF 1
10~30	±0.20	5~10	±2°		
~5	±0.10				

ECN NO.	REV.	DATE.	DESCRIPTION.	CHANGE.	CHECK.	APPRO.
	A		NEW			

X-ON Electronics

Largest Supplier of Electrical and Electronic Components

Click to view similar products for [DIP Switches/SIP Switches](#) category:

Click to view products by [HRO parts manufacturer](#):

Other Similar products are found below :

[78M03S](#) [79B10T](#) [8136-475G4T](#) [G7G-1A2-CB-DC12](#) [A7SS-M](#) [DBP 2110](#) [DBP 2112](#) [DBS1008](#) [DHN02FTVTR](#) [DHN10T](#) [DHS108](#)
[DPL08TN](#) [DRD16CSE04](#) [DRR4010](#) [DRR60016](#) [DRS4016](#) [BD06E](#) [1825008-1](#) [1825444-1](#) [25.350.0653.0](#) [LA2-DC12](#) [SBS 5004 TG](#)
[SDA10H1BDA](#) [97R06ST](#) [A2C-2A5](#) [1825444-7](#) [ADE08SA04](#) [ADE12S04](#) [2161391-1](#) [2-1825058-8](#) [CCVA 2.5/ 4-G-5.08](#) [P26THRR32](#)
[25.330.0653.1](#) [25.352.0353.0](#) [MDG305ST](#) [IKN0600000](#) [IKN0800000](#) [LA2-002-DC24](#) [DBP2008](#) [DBS1003](#) [DBS2008](#) [438872000](#)
[DRD10CRAE04](#) [DRS1604](#) [DSR02T](#) [DSS 208 N](#) [5-1825033-1](#) [106-SDN06-EV](#) [1-1437507-6](#) [E2FMX2D1M1TGJ03M](#)
[E3ZMCT81M1TJ03M](#)