

BAT46W

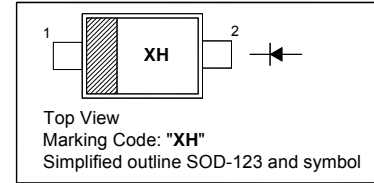
Surface Mount Schottky Barrier Diode

Features

- High breakdown voltage
- Low forward voltage
- Surface mount device

PINNING

PIN	DESCRIPTION
1	Cathode
2	Anode

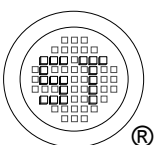


Absolute Maximum Ratings ($T_a = 25^\circ\text{C}$)

Parameter	Symbol	Value	Unit
Repetitive Peak Reverse Voltage	V_{RRM}	100	V
Continuous Forward Current	I_F	150	mA
Repetitive Peak Forward Current (at $t_p < 1$ s)	I_{FRM}	350	mA
Surge Forward Current (at $t_p < 10$ ms)	I_{FSM}	750	mA
Power Dissipation	P_{tot}	200	mW
Thermal Resistance Junction Ambient	$R_{\theta JA}$	420	$^\circ\text{C}/\text{W}$
Operating Junction Temperature Range	T_j	- 55 to + 125	$^\circ\text{C}$
Storage Temperature Range	T_{stg}	- 55 to + 150	$^\circ\text{C}$

Characteristics at $T_a = 25^\circ\text{C}$

Parameter	Symbol	Min.	Typ.	Max.	Unit
Reverse Breakdown Voltage at $I_R = 100 \mu\text{A}$	$V_{(BR)R}$	100	-	-	V
Forward Voltage at $I_F = 0.1$ mA at $I_F = 10$ mA at $I_F = 250$ mA	V_F	-	-	0.25 0.45 1	V
Reverse Current at $V_R = 1.5$ V at $V_R = 10$ V at $V_R = 50$ V at $V_R = 75$ V at $V_R = 1.5$ V, $T_j = 60^\circ\text{C}$ at $V_R = 10$ V, $T_j = 60^\circ\text{C}$ at $V_R = 50$ V, $T_j = 60^\circ\text{C}$ at $V_R = 75$ V, $T_j = 60^\circ\text{C}$	I_R	-	-	0.5 0.8 2 5 5 7.5 15 20	μA
Total Capacitance at $V_R = 0$ V, $f = 1$ MHz at $V_R = 1$ V, $f = 1$ MHz	C_T	-	11 6	40 35	pF



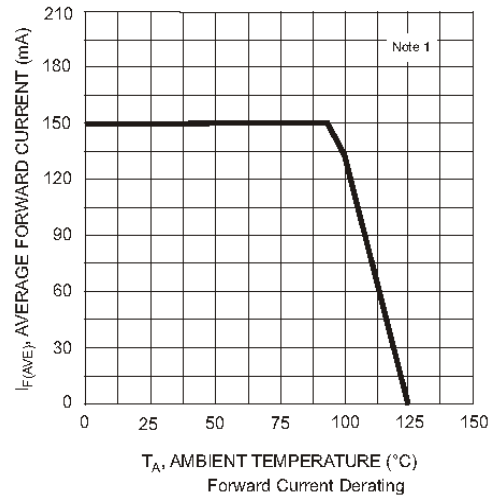
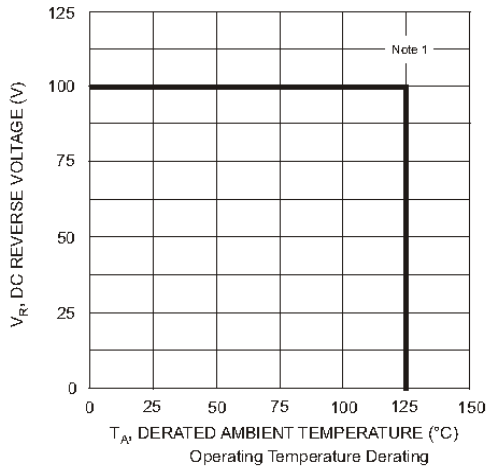
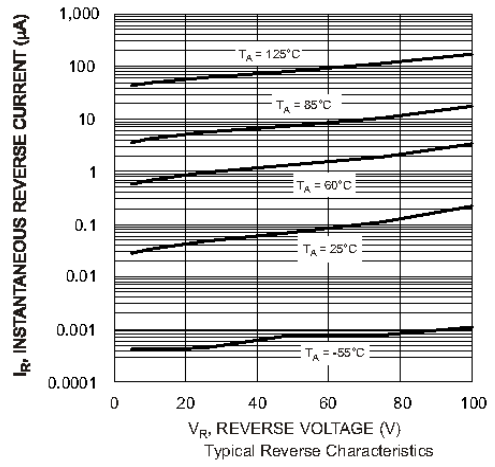
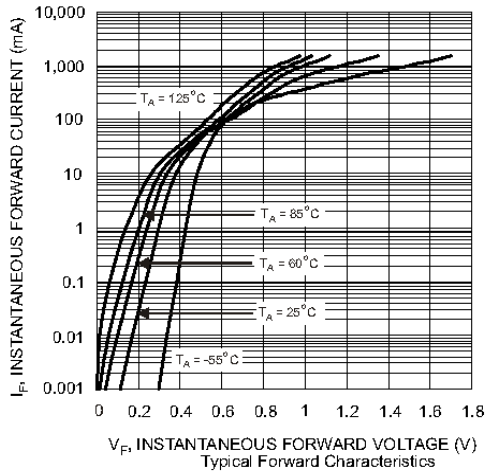
SEMTECH ELECTRONICS LTD.



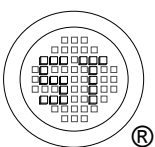
ISO/TS 16949 : 2009 Certificate No. 180713000
ISO14001 : 2004 Certificate No. 7116
ISO 9001 : 2008 Certificate No. 50719410
BS-OHSAS 18001 : 2007 Certificate No. 7116
IECQ QC 080000 Certificate No. PRC-18P4-1483-1

Dated: 31/03/2016 Rev: 01

BAT46W



Note 1: Part mounted on FR-4 board with recommended pad layout, which can be found on our website at <http://www.diodes.com/datasheets/ap02001.pdf>.



SEMTECH ELECTRONICS LTD.



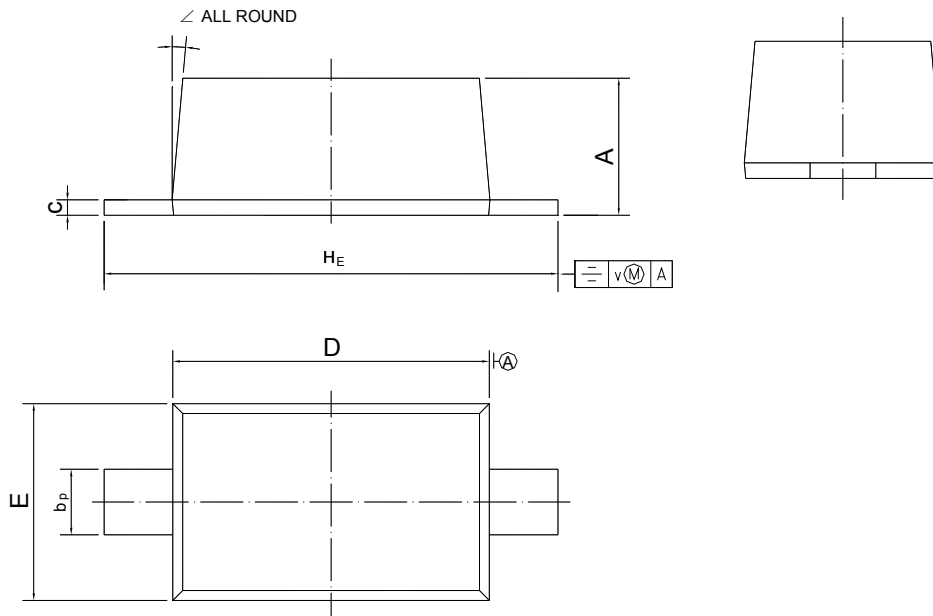
Dated: 31/03/2016 Rev: 01

BAT46W

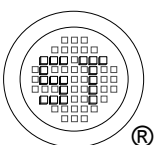
PACKAGE OUTLINE

Plastic surface mounted package; 2 leads

SOD-123



UNIT	A	b _p	c	D	E	H _E	v	∠
mm	1.15 1.05	0.6 0.5	0.135 0.100	2.7 2.6	1.65 1.55	3.85 3.55	0.2	5°



SEMTECH ELECTRONICS LTD.



Dated: 31/03/2016 Rev: 01

X-ON Electronics

Largest Supplier of Electrical and Electronic Components

Click to view similar products for [Schottky Diodes & Rectifiers](#) category:

Click to view products by [Semtech](#) manufacturer:

Other Similar products are found below :

[CUS06\(Te85L,Q,M\)](#) [D1FH3-5063](#) [MBR0530L-TP](#) [MBR10100CT-BP](#) [MBR30H100MFST1G](#) [MMBD301M3T5G](#) [PMAD1103-LF](#)
[PMAD1108-LF](#) [RB160M-50TR](#) [RB520S-30](#) [RB551V-30](#) [DD350N18K](#) [DZ435N40K](#) [DZ600N16K](#) [BAS16E6433HTMA1](#) [BAS 3010S-](#)
[02LRH E6327](#) [BAT 54-02LRH E6327](#) [IDL02G65C5XUMA1](#) [NSR05F40QNXT5G](#) [JANS1N6640](#) [SB07-03C-TB-H](#) [SB1003M3-TL-W](#)
[SBAT54CWT1G](#) [SBM30-03-TR-E](#) [SK32A-LTP](#) [SK33A-TP](#) [SK34A-TP](#) [SK34B-TP](#) [SMD1200PL-TP](#) [ACDBN160-HF](#) [SS3003CH-TL-E](#)
[STPS30S45CW](#) [PDS3100Q-7](#) [GA01SHT18](#) [CRS10I30A\(Te85L,QM\)](#) [MBR1240MFST1G](#) [MBRB30H30CT-1G](#) [BAS28E6433HTMA1](#) [BAS](#)
[70-02L E6327](#) [HSB123JTR-E](#) [JANTX1N5712-1](#) [VS-STPS40L45CW-N3](#) [DD350N12K](#) [SB007-03C-TB-E](#) [SB10015M-TL-E](#) [SB1003M3-TL-](#)
[E](#) [SK110-LTP](#) [SK154-TP](#) [SK32A-TP](#) [SK33B-TP](#)