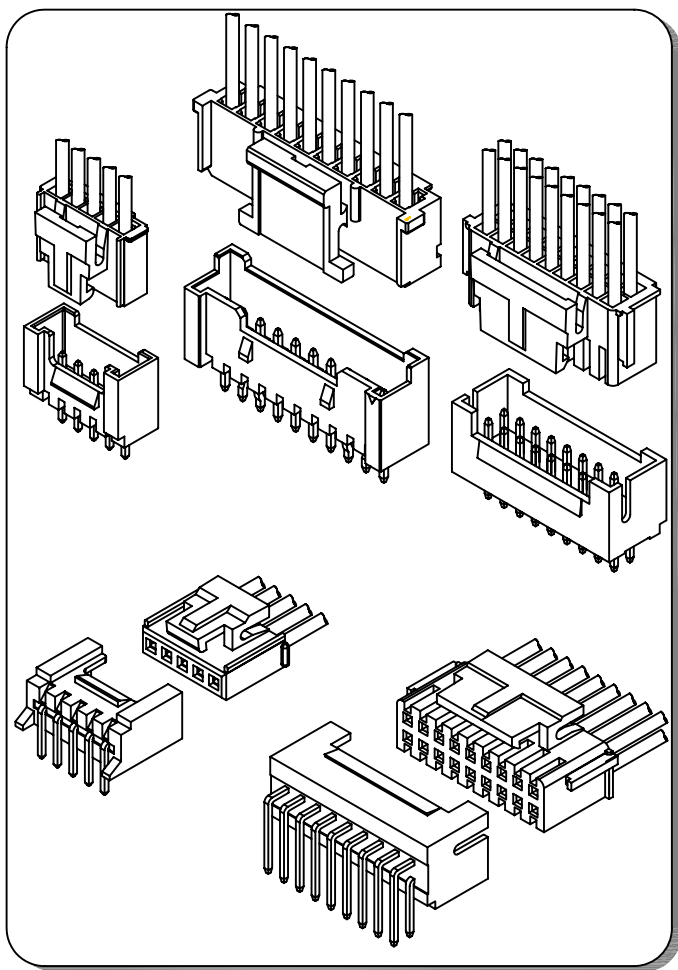


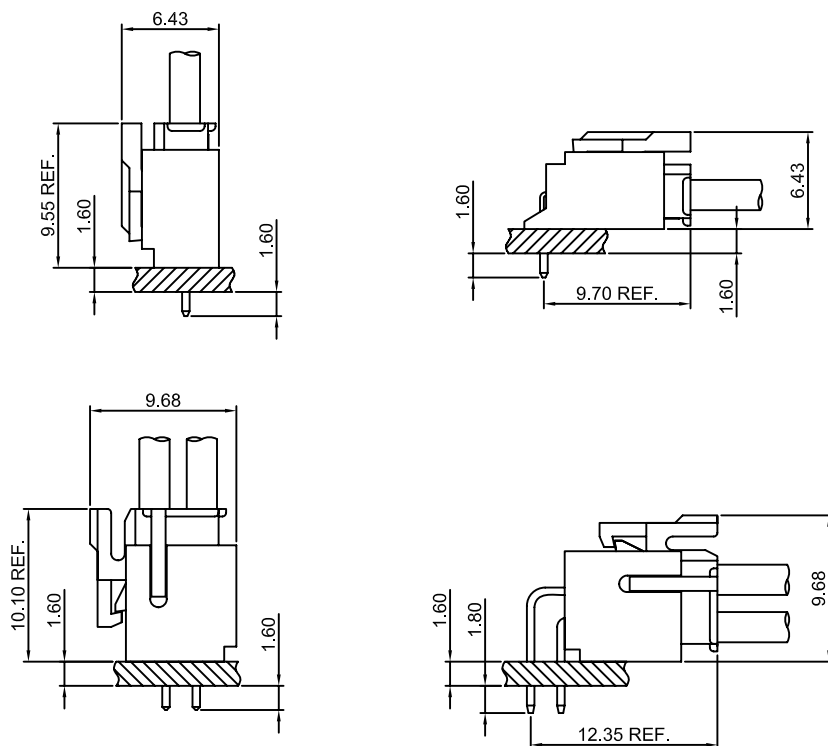
## Specifications

- Current rating:3A AC,DC
- Voltage rating:250V AC,DC
- Temperature range:-40°C~+105°C
- Contact resistance:30mΩMax.
- Insulation resistance:1000MΩMin.
- Withstanding voltage:1000V AC/minute
- \*Compliant with RoHS and REACH\*
- \*Meet the HF/Halogen Free,need to customize\*
- \*Contact CJT for details\*

## Standards



## Assembly layout

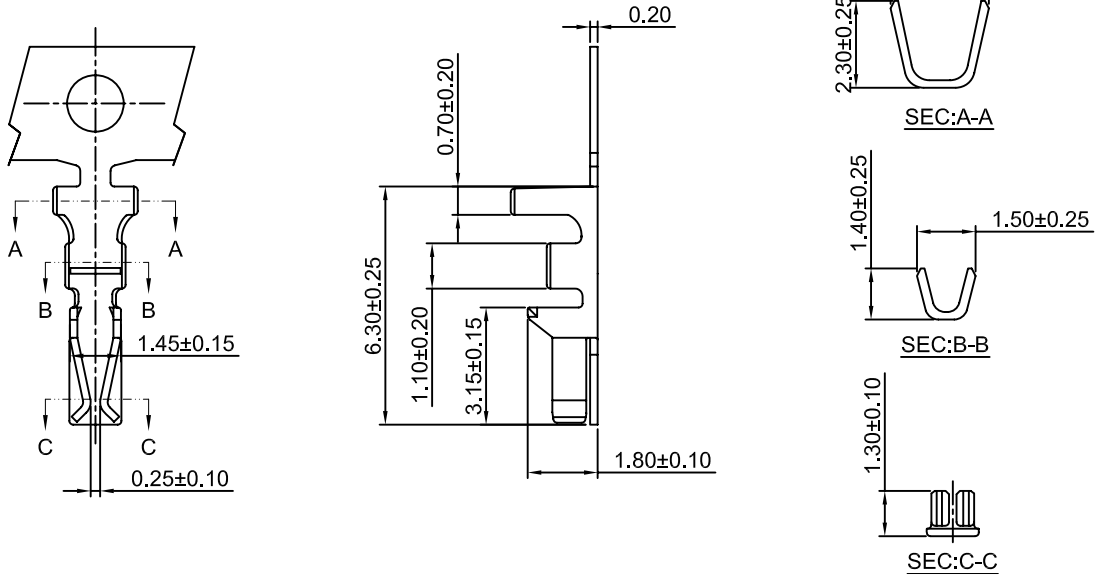


## A2008-T

2.00mm pitch Single Row Crimp Terminal

### Reference Informations:

\*Used in CJT A2008 series Single Row Housing



### Ordering information & Specifications:

Unit:mm

| Part NO. | Wire Range | Insulation O.D. | Material        | Finish           | Qty/reel   |
|----------|------------|-----------------|-----------------|------------------|------------|
| A2008-TP | AWG#22-#30 | 1.45mm(max)     | Phosphor Bronze | Tin over Nickel  | 10,000 PCS |
| A2008-GP | AWG#22-#30 | 1.45mm(max)     | Phosphor Bronze | Gold over Nickel | 10,000 PCS |

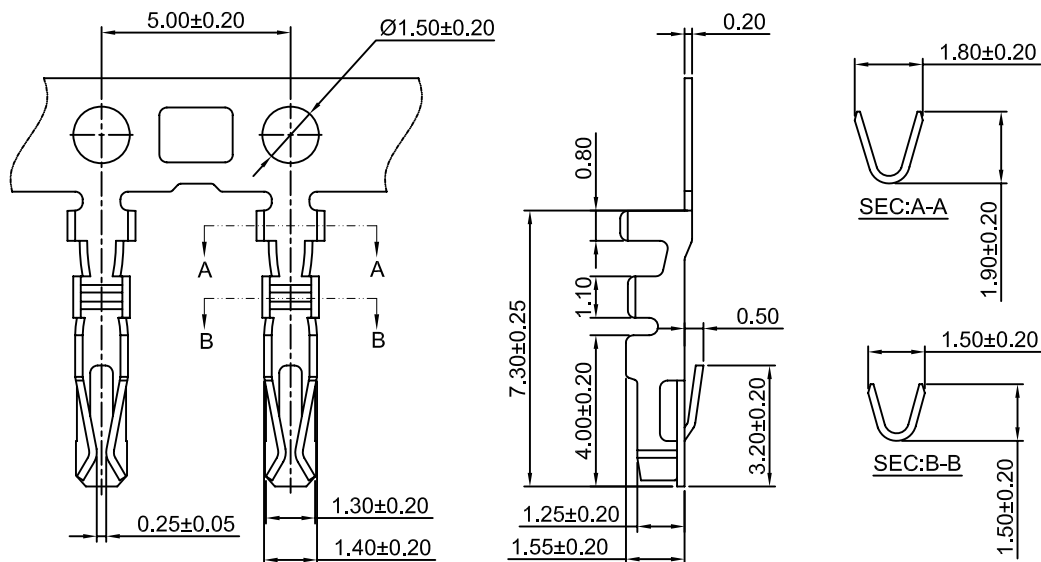
Optional Gold plating available but MOQ requested

## A2008-T-A

2.00mm pitch Dual Row Crimp Terminal

### Reference Informations:

\*Used in CJT A2008 series Dual Row Housing



### Ordering information & Specifications:

Unit:mm

| Part NO.   | Wire Range | Insulation O.D. | Material        | Finish           | Qty/reel   |
|------------|------------|-----------------|-----------------|------------------|------------|
| A2008-TP-A | AWG#22-#30 | 1.45mm(max)     | Phosphor Bronze | Tin over Nickel  | 10,000 PCS |
| A2008-GP-A | AWG#22-#30 | 1.45mm(max)     | Phosphor Bronze | Gold over Nickel | 10,000 PCS |

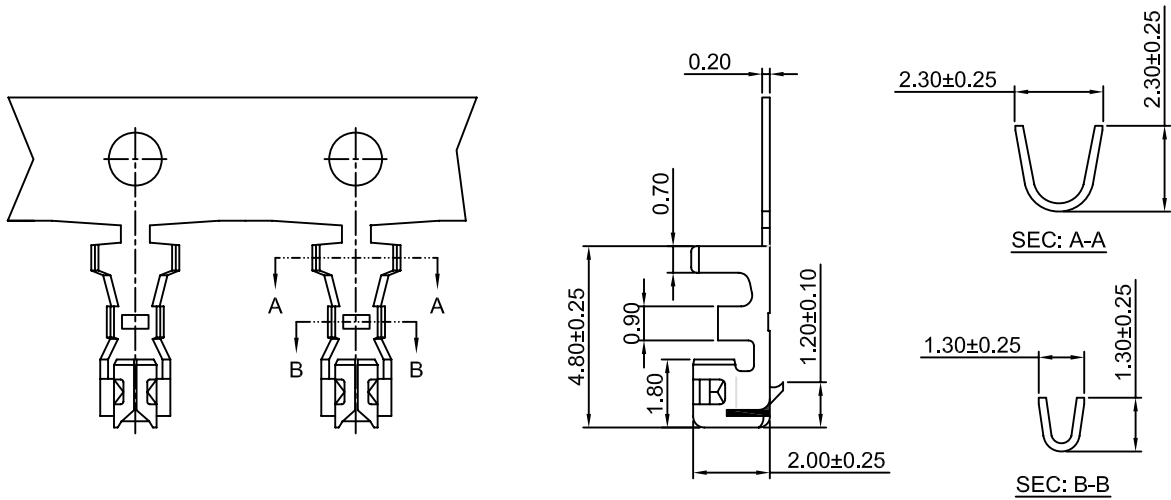
Optional Gold plating available but MOQ requested

## A2008-T-B

2.00mm pitch Single Row Crimp Terminal

### Reference Informations:

\*Used in CJT A2008HA series Single Row Housing



### Ordering information & Specifications:

Unit:mm

| Part NO.   | Wire Range | Insulation O.D. | Material        | Finish           | Qty/reel   |
|------------|------------|-----------------|-----------------|------------------|------------|
| A2008-TP-B | AWG#24-#30 | 1.40mm(max)     | Phosphor Bronze | Tin over Nickel  | 10,000 PCS |
| A2008-GP-B | AWG#24-#30 | 1.40mm(max)     | Phosphor Bronze | Gold over Nickel | 10,000 PCS |

Optional Gold plating available but MOQ requested

## A2008H-XP

2.00mm pitch Housing

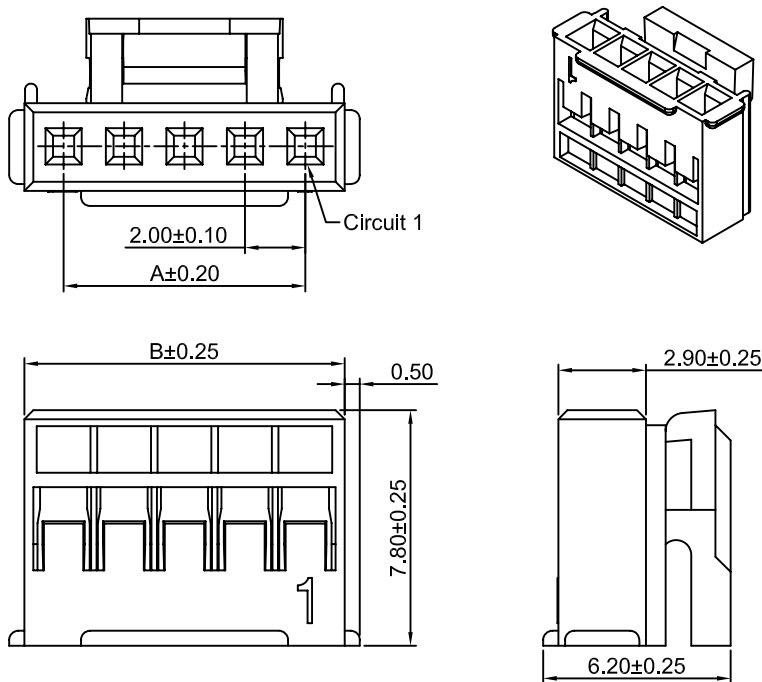
### Reference Informations:

\*Material:Nylon 66,UL94V-0

\*Suitable CJT A2008 series Terminal

\*Mates with CJT A2008 series Single Row Wafer

\*Color:White



### Ordering Information & Dimensions:

| PART NO. | Dimensions |       |
|----------|------------|-------|
|          | A          | B     |
| 3P       | 4.00       | 6.70  |
| 4P       | 6.00       | 8.70  |
| 5P       | 8.00       | 10.70 |
| 6P       | 10.00      | 12.70 |
| 7P       | 12.00      | 14.70 |
| 8P       | 14.00      | 16.70 |
| 9P       | 16.00      | 18.70 |
| 10P      | 18.00      | 20.70 |
| 11P      | 20.00      | 22.70 |
| 12P      | 22.00      | 24.70 |
| 13P      | 24.00      | 26.70 |
| 14P      | 26.00      | 28.70 |
| 15P      | 28.00      | 30.70 |
| 16P      | 30.00      | 32.70 |

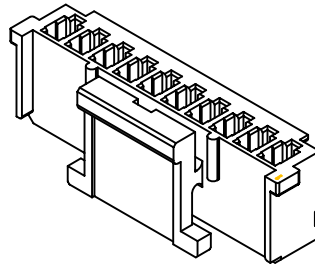
Unit: mm

## A2008HA-XP

2.00mm pitch Housing

### Reference Informations:

- \*Material:Nylon 66,UL94V-0
- \*Suitable CJT A2008-T-B series Terminal
- \*Mates with CJT A2008WVA series Wafer
- \*Color:Ivory



### Ordering Information & Dimensions:

| PART NO. | Dimensions |       |
|----------|------------|-------|
|          | A          | B     |
| 4P       | 6.00       | 9.10  |
| 5P       | 8.00       | 11.10 |
| 6P       | 10.00      | 13.10 |
| 7P       | 12.00      | 15.10 |
| 8P       | 14.00      | 17.10 |
| 9P       | 16.00      | 19.10 |
| 10P      | 18.00      | 21.10 |
| 11P      | 20.00      | 23.10 |
| 12P      | 22.00      | 25.10 |
| 13P      | 24.00      | 27.10 |
| 14P      | 26.00      | 29.10 |
| 15P      | 28.00      | 31.10 |
| 16P      | 30.00      | 33.10 |
| 17P      | 32.00      | 35.10 |
| 18P      | 34.00      | 37.10 |
| 19P      | 36.00      | 39.10 |
| 20P      | 38.00      | 41.10 |

Unit: mm

## A2008HB-XP

2.00mm pitch Housing

### Reference Informations:

- \*Material:Nylon 66,UL94V-0
- \*Suitable CJT A2008-T-A series Terminal
- \*Mates with CJT A2008 series Single Row Wafer
- \*Color:White



### Ordering Information & Dimensions:

| PART NO. | Dimensions |       |       |
|----------|------------|-------|-------|
|          | A          | B     | C     |
| 2P       | 2.00       | 7.00  | 4.60  |
| 3P       | 4.00       | 9.00  | 6.60  |
| 4P       | 6.00       | 11.00 | 8.60  |
| 5P       | 8.00       | 13.00 | 10.60 |
| 6P       | 10.00      | 15.00 | 12.60 |
| 7P       | 12.00      | 17.00 | 14.60 |
| 8P       | 14.00      | 19.00 | 16.60 |
| 9P       | 16.00      | 21.00 | 18.60 |
| 10P      | 18.00      | 23.00 | 20.60 |
| 11P      | 20.00      | 25.00 | 22.60 |
| 12P      | 22.00      | 27.00 | 24.60 |
| 13P      | 24.00      | 29.00 | 26.60 |
| 14P      | 26.00      | 31.00 | 28.60 |
| 15P      | 28.00      | 33.00 | 30.60 |

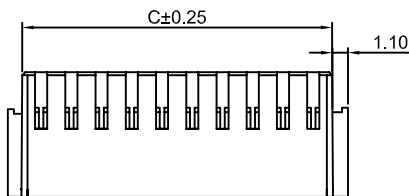
Unit: mm

## A2008H-2xXP

2.00mm pitch Dual Row Housing

### Reference Informations:

- \*Material:Nylon 66,UL94V-0
- \*Suitable CJT A2008-T-A series Terminal
- \*Mates with CJT A2008 series Dual Row Wafer
- \*Color:White



### Ordering Information & Dimensions:

| PART NO. | Dimensions |       |       |
|----------|------------|-------|-------|
|          | A          | B     | C     |
| 2x3P     | 4.00       | 7.70  | 6.70  |
| 2x4P     | 6.00       | 9.70  | 8.70  |
| 2x5P     | 8.00       | 11.70 | 10.70 |
| 2x6P     | 10.00      | 13.70 | 12.70 |
| 2x7P     | 12.00      | 15.70 | 14.70 |
| 2x8P     | 14.00      | 17.70 | 16.70 |
| 2x9P     | 16.00      | 19.70 | 18.70 |
| 2x10P    | 18.00      | 21.70 | 20.70 |
| 2x11P    | 20.00      | 23.70 | 22.70 |
| 2x12P    | 22.00      | 25.70 | 24.70 |
| 2x13P    | 24.00      | 27.70 | 26.70 |
| 2x14P    | 26.00      | 29.70 | 28.70 |
| 2x15P    | 28.00      | 31.70 | 30.70 |
| 2x16P    | 30.00      | 33.70 | 32.70 |
| 2x20P    | 38.00      | 41.70 | 40.70 |

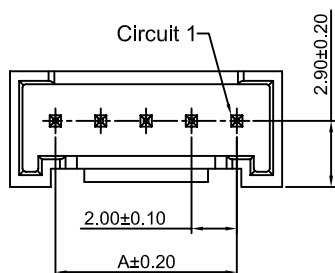
Unit: mm

## A2008WV-XP

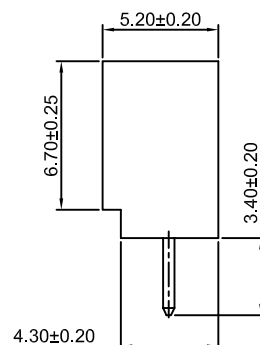
2.00mm pitch 180° Wafer

### Reference Informations:

- \*Material:Pin:Brass/Tin over Nickel  
Insulator:Nylon 66,UL94V-0
- \*Mates with CJT A2008 series Single Row Housing
- \*Color:White



P.C.B LAYOUT



### Ordering Information & Dimensions:

| PART NO. | Dimensions |       |
|----------|------------|-------|
|          | A          | B     |
| 2P       | 2.00       | 6.00  |
| 3P       | 4.00       | 8.00  |
| 4P       | 6.00       | 10.00 |
| 5P       | 8.00       | 12.00 |
| 6P       | 10.00      | 14.00 |
| 7P       | 12.00      | 16.00 |
| 8P       | 14.00      | 18.00 |
| 9P       | 16.00      | 20.00 |
| 10P      | 18.00      | 22.00 |
| 11P      | 20.00      | 24.00 |
| 12P      | 22.00      | 26.00 |
| 13P      | 24.00      | 28.00 |
| 14P      | 26.00      | 30.00 |
| 15P      | 28.00      | 32.00 |
| 16P      | 30.00      | 34.00 |

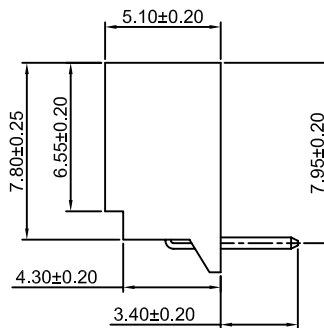
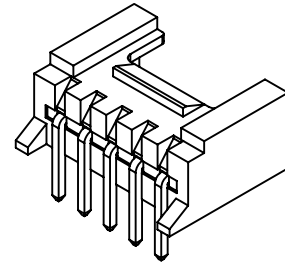
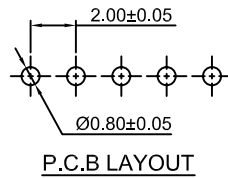
Unit: mm

## A2008WR-XP

2.00mm pitch 90° Wafer

### Reference Informations:

- \*Material:Pin:Brass/Tin over Nickel  
Insulator:Nylon 66,UL94V-0
- \*Mates with CJT A2008 series Single Row Housing
- \*Color:White



### Ordering Information & Dimensions:

| PART NO. | Dimensions |       |
|----------|------------|-------|
|          | A          | B     |
| 2P       | 2.00       | 6.00  |
| 3P       | 4.00       | 8.00  |
| 4P       | 6.00       | 10.00 |
| 5P       | 8.00       | 12.00 |
| 6P       | 10.00      | 14.00 |
| 7P       | 12.00      | 16.00 |
| 8P       | 14.00      | 18.00 |
| 9P       | 16.00      | 20.00 |
| 10P      | 18.00      | 22.00 |
| 11P      | 20.00      | 24.00 |
| 12P      | 22.00      | 26.00 |
| 13P      | 24.00      | 28.00 |
| 14P      | 26.00      | 30.00 |
| 15P      | 28.00      | 32.00 |
| 16P      | 30.00      | 34.00 |

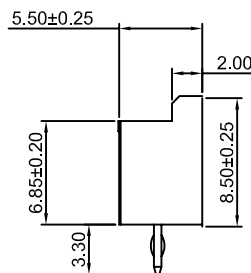
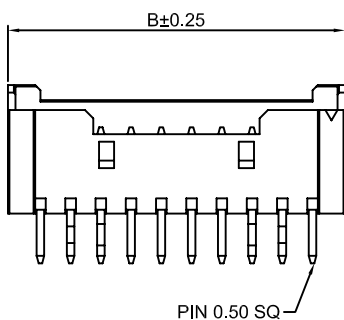
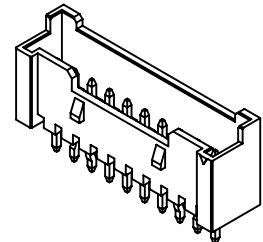
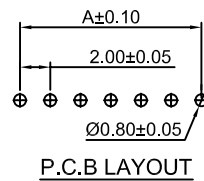
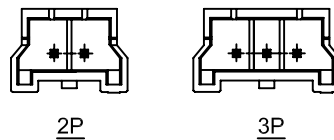
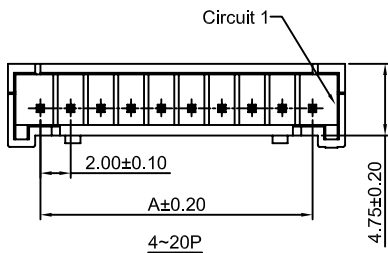
Unit: mm

## A2008WVA-XP

2.00mm pitch 180° Wafer

### Reference Informations:

- \*Material:Pin:Brass/Tin over Nickel  
Insulator:Nylon 66,UL94V-0
- \*Mates with CJT A2008HA series Single Row Housing
- \*Color:Ivory



### Ordering Information & Dimensions:

| PART NO. | Dimensions |       |
|----------|------------|-------|
|          | A          | B     |
| 2P       | 2.00       | 7.70  |
| 3P       | 4.00       | 9.70  |
| 4P       | 6.00       | 10.30 |
| 5P       | 8.00       | 12.30 |
| 6P       | 10.00      | 14.30 |
| 7P       | 12.00      | 16.30 |
| 8P       | 14.00      | 18.30 |
| 9P       | 16.00      | 20.30 |
| 10P      | 18.00      | 22.30 |
| 11P      | 20.00      | 24.30 |
| 12P      | 22.00      | 26.30 |
| 13P      | 24.00      | 28.30 |
| 14P      | 26.00      | 30.30 |
| 15P      | 28.00      | 32.30 |
| 16P      | 30.00      | 34.30 |
| 17P      | 32.00      | 36.30 |
| 18P      | 34.00      | 38.30 |
| 19P      | 36.00      | 40.30 |
| 20P      | 38.00      | 42.30 |

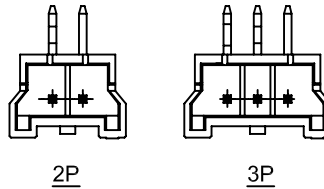
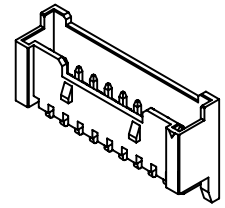
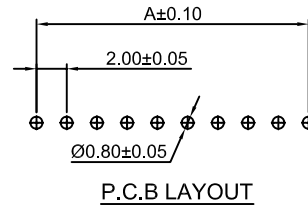
Unit: mm

## A2008WRA-XP

2.00mm pitch 90° Wafer

### Reference Informations:

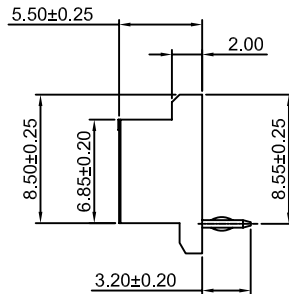
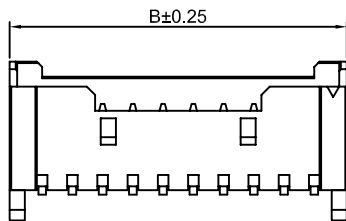
- \*Material: Pin: Brass/Tin over Nickel  
Insulator: Nylon 66, UL94V-0
- \*Mates with CJT A2008HA series Single Row Housing
- \*Color: Ivory



### Ordering Information & Dimensions:

| PART NO. | Dimensions |       |
|----------|------------|-------|
|          | A          | B     |
| 2P       | 2.00       | 7.70  |
| 3P       | 4.00       | 9.70  |
| 4P       | 6.00       | 10.30 |
| 5P       | 8.00       | 12.30 |
| 6P       | 10.00      | 14.30 |
| 7P       | 12.00      | 16.30 |
| 8P       | 14.00      | 18.30 |
| 9P       | 16.00      | 20.30 |
| 10P      | 18.00      | 22.30 |
| 11P      | 20.00      | 24.30 |
| 12P      | 22.00      | 26.30 |
| 13P      | 24.00      | 28.30 |
| 14P      | 26.00      | 30.30 |
| 15P      | 28.00      | 32.30 |
| 16P      | 30.00      | 34.30 |
| 17P      | 32.00      | 36.30 |
| 18P      | 34.00      | 38.30 |
| 19P      | 36.00      | 40.30 |
| 20P      | 38.00      | 42.30 |

Unit: mm

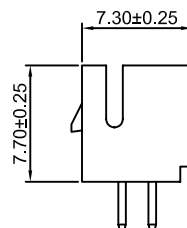
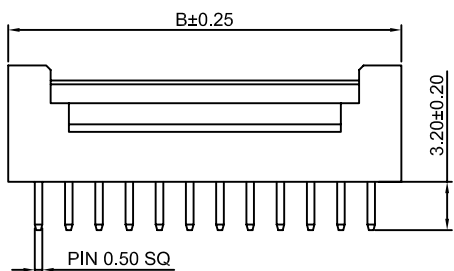
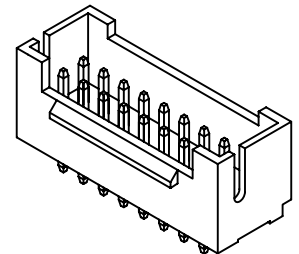
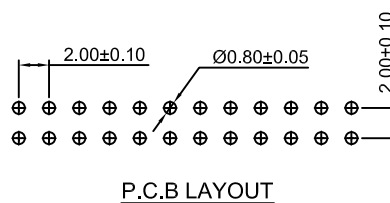
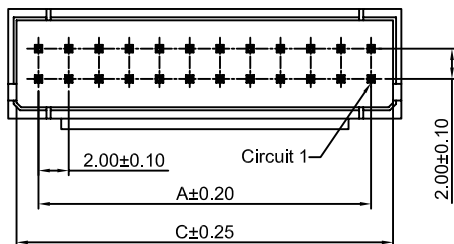


## A2008WV-2xXP

2.00mm pitch 180° Dual Row Wafer

### Reference Informations:

- \*Material: Pin: Brass/Tin over Nickel  
Insulator: Nylon 66, UL94V-0
- \*Mates with CJT A2008 series Dual Row Housing
- \*Color: Ivory



### Ordering Information & Dimensions:

| PART NO. | Dimensions |       |       |
|----------|------------|-------|-------|
|          | A          | B     | C     |
| 2x3P     | 4.00       | 8.00  | 6.80  |
| 2x4P     | 6.00       | 10.00 | 8.80  |
| 2x5P     | 8.00       | 12.00 | 10.80 |
| 2x6P     | 10.00      | 14.00 | 12.80 |
| 2x7P     | 12.00      | 16.00 | 14.80 |
| 2x8P     | 14.00      | 18.00 | 16.80 |
| 2x9P     | 16.00      | 20.00 | 18.80 |
| 2x10P    | 18.00      | 22.00 | 20.80 |
| 2x11P    | 20.00      | 24.00 | 22.80 |
| 2x12P    | 22.00      | 26.00 | 24.80 |
| 2x13P    | 24.00      | 28.00 | 26.80 |
| 2x14P    | 26.00      | 30.00 | 28.80 |
| 2x15P    | 28.00      | 32.00 | 30.80 |
| 2x16P    | 30.00      | 34.00 | 32.80 |
| 2x20P    | 38.00      | 42.00 | 40.80 |

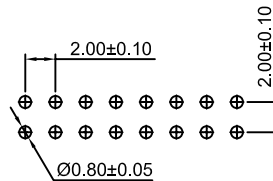
Unit: mm

## A2008WR-2xXP

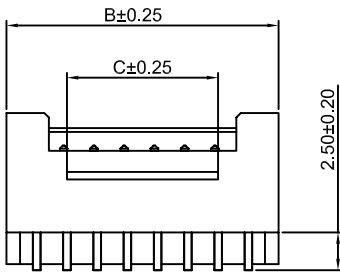
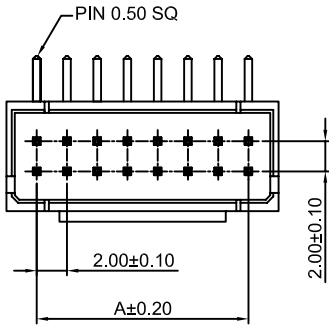
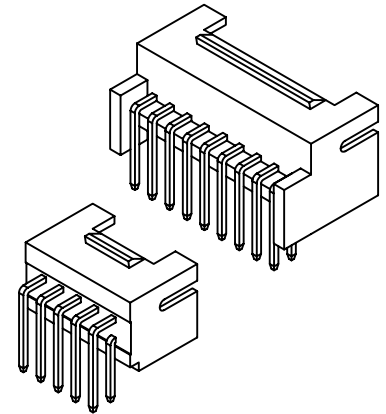
2.00mm pitch 90° Dual Row Wafer

### Reference Informations:

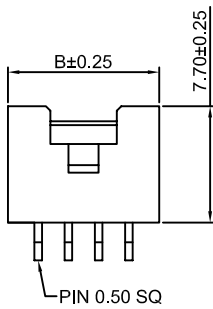
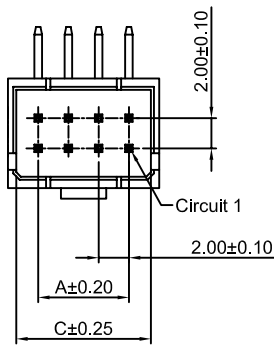
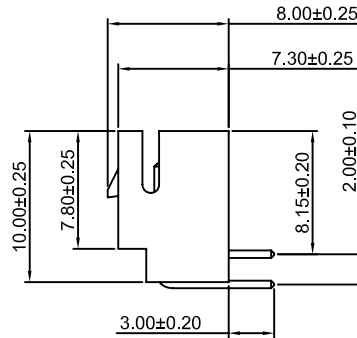
- \*Material: Pin: Brass/Tin over Nickel  
Insulator: Nylon 66, UL94V-0
- \*Mates with CJT A2008 series Dual Row Housing
- \*Color: Ivory



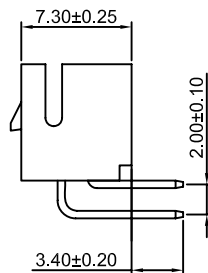
P.C.B LAYOUT



2x6P~2x20P



2x3P~2x5P



### Ordering Information & Dimensions:

| PART NO. | Dimensions |       |       |
|----------|------------|-------|-------|
|          | A          | B     | C     |
| 2x3P     | 4.00       | 8.00  | 6.80  |
| 2x4P     | 6.00       | 10.00 | 8.80  |
| 2x5P     | 8.00       | 12.00 | 10.80 |
| 2x6P     | 10.00      | 14.00 | 12.80 |
| 2x7P     | 12.00      | 16.00 | 14.80 |
| 2x8P     | 14.00      | 18.00 | 16.80 |
| 2x9P     | 16.00      | 20.00 | 18.80 |
| 2x10P    | 18.00      | 22.00 | 20.80 |
| 2x11P    | 20.00      | 24.00 | 22.80 |
| 2x12P    | 22.00      | 26.00 | 24.80 |
| 2x13P    | 24.00      | 28.00 | 26.80 |
| 2x14P    | 26.00      | 30.00 | 28.80 |
| 2x15P    | 28.00      | 32.00 | 30.80 |
| 2x16P    | 30.00      | 34.00 | 32.80 |
| 2x20P    | 38.00      | 42.00 | 40.80 |

Unit: mm



## A2008WV-S-XP

2.00mm pitch 180° Wafer-SMT TYPE

### Reference Informations:

- \*Material: Pin: Brass/Tin over Nickel  
Insulator: Nylon6T, UL94V-0
- \*Mates with CJT A2008 series Single Row Housing
- \*Color: Ivory



### Ordering Information & Dimensions:

| PART NO. | Dimensions |       |       |
|----------|------------|-------|-------|
|          | A          | B     | C     |
| 2P       | 2.00       | 4.75  | 8.00  |
| 3P       | 4.00       | 6.75  | 10.00 |
| 4P       | 6.00       | 8.75  | 12.00 |
| 5P       | 8.00       | 10.75 | 14.00 |
| 6P       | 10.00      | 12.75 | 16.00 |
| 7P       | 12.00      | 14.75 | 18.00 |
| 8P       | 14.00      | 16.75 | 20.00 |
| 9P       | 16.00      | 18.75 | 22.00 |
| 10P      | 18.00      | 20.75 | 24.00 |
| 11P      | 20.00      | 22.75 | 26.00 |
| 12P      | 22.00      | 24.75 | 28.00 |
| 13P      | 24.00      | 26.75 | 30.00 |
| 14P      | 26.00      | 28.75 | 32.00 |
| 15P      | 28.00      | 30.75 | 34.00 |
| 16P      | 30.00      | 32.75 | 36.00 |

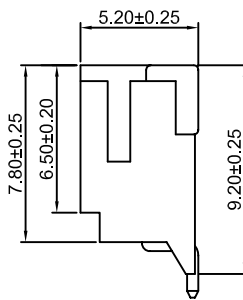
Unit: mm

## A2008WR-S-XP

2.00mm pitch 90° Wafer-SMT TYPE

### Reference Informations:

- \*Material: Pin: Brass/Tin over Nickel  
Insulator: Nylon6T, UL94V-0
- \*Mates with CJT A2008 series Single Row Housing
- \*Color: Beige



### Ordering Information & Dimensions:

| PART NO. | Dimensions |       |
|----------|------------|-------|
|          | A          | B     |
| 2P       | 2.00       | 8.00  |
| 3P       | 4.00       | 10.00 |
| 4P       | 6.00       | 12.00 |
| 5P       | 8.00       | 14.00 |
| 6P       | 10.00      | 16.00 |
| 7P       | 12.00      | 18.00 |
| 8P       | 14.00      | 20.00 |
| 9P       | 16.00      | 22.00 |
| 10P      | 18.00      | 24.00 |
| 11P      | 20.00      | 26.00 |
| 12P      | 22.00      | 28.00 |
| 13P      | 24.00      | 30.00 |
| 14P      | 26.00      | 32.00 |
| 15P      | 28.00      | 34.00 |
| 16P      | 30.00      | 36.00 |

Unit: mm

## A2008WV-S-2xXP

2.00mm pitch 180° Dual Row Wafer-SMT TYPE

### Reference Informations:

- \*Material: Pin: Brass/Tin over Nickel  
Insulator: Nylon6T, UL94V-0
- \*Mates with CJT A2008 series Dual Row Housing
- \*Color: Ivory



### Ordering Information & Dimensions:

| PART NO. | Dimensions |       |       |
|----------|------------|-------|-------|
|          | A          | B     | C     |
| 2x3P     | 4.00       | 8.00  | 6.80  |
| 2x4P     | 6.00       | 10.00 | 8.80  |
| 2x5P     | 8.00       | 12.00 | 10.80 |
| 2x6P     | 10.00      | 14.00 | 12.80 |
| 2x7P     | 12.00      | 16.00 | 14.80 |
| 2x8P     | 14.00      | 18.00 | 16.80 |
| 2x9P     | 16.00      | 20.00 | 18.80 |
| 2x10P    | 18.00      | 22.00 | 20.80 |
| 2x11P    | 20.00      | 24.00 | 22.80 |
| 2x12P    | 22.00      | 26.00 | 24.80 |
| 2x13P    | 24.00      | 28.00 | 26.80 |
| 2x14P    | 26.00      | 30.00 | 28.80 |
| 2x15P    | 28.00      | 32.00 | 30.80 |
| 2x16P    | 30.00      | 34.00 | 32.80 |
| 2x20P    | 38.00      | 42.00 | 40.80 |

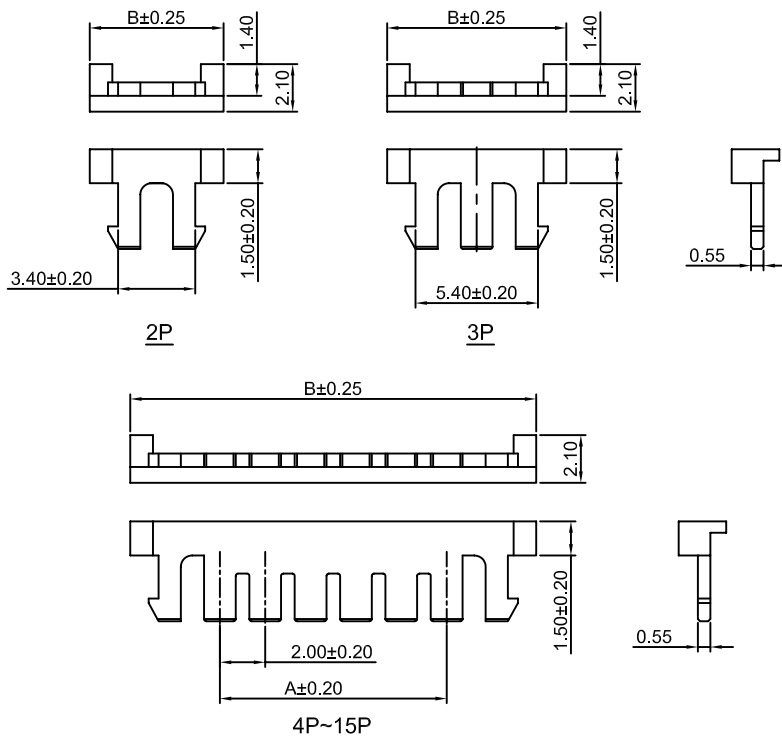
Unit: mm

## A2008S-XP

2.00mm pitch Seal

### Reference Informations:

- \*Material: Nylon 66, UL94V-2
- \*Use in CJT A2008 series Housing
- \*Color: Brick red



### Ordering Information & Dimensions:

| PART NO. | Dimensions |       |
|----------|------------|-------|
|          | A          | B     |
| 2P       | 3.40       | 5.90  |
| 3P       | 5.40       | 7.90  |
| 4P       | 7.40       | 9.90  |
| 5P       | 9.40       | 11.90 |
| 6P       | 11.40      | 13.90 |
| 7P       | 13.40      | 15.90 |
| 8P       | 15.40      | 17.90 |
| 9P       | 17.40      | 19.90 |
| 10P      | 19.40      | 21.90 |
| 11P      | 21.40      | 23.90 |
| 12P      | 23.40      | 25.90 |
| 13P      | 25.40      | 27.90 |
| 14P      | 27.40      | 29.90 |
| 15P      | 29.40      | 31.90 |

Unit: mm

## X-ON Electronics

Largest Supplier of Electrical and Electronic Components

*Click to view similar products for [Headers & Wire Housings](#) category:*

*Click to view products by [Changjiang](#) manufacturer:*

Other Similar products are found below :

[95000-104TRLF](#) [10135584-644402LF](#) [DF62W-EP2022PCA](#) [95000-106TRLF](#) [DF62W-2022SCA](#) [DF62W-EP2022PC](#) [2203348](#) [DF62W-2022SC](#) [1084018](#) [1029039](#) [1084017](#) [802-10-012-10-002000](#) [1112640](#) [1112639](#) [891-007-9SS-BST1T](#) [000-34000](#) [0008550134](#) [0009482033](#) [0009507031](#) [57102-F02-18ULF](#) [57102-S06-03LF](#) [57202-S52-04LF](#) [PCN6-15S-2.5E](#) [0039019024](#) [58102-G61-06LF](#) [582553-1](#) [0009485154](#) [0009508121](#) [0022285053](#) [0050291907](#) [018731A](#) [LY20-4P-DT1-P1E-BR](#) [02.125.8002.8](#) [60101931](#) [60598-1 \(Cut Strip\)](#) [M1625-3R/100](#) [61062-3](#) [61082-181009](#) [CSU011177004](#) [636-1427](#) [638009-1](#) [641938-9](#) [641991-4](#) [644168-1](#) [644827-2](#) [647662-1](#) [65039-019ELF](#) [65692-001LF](#) [65781-018](#) [65781-047](#)