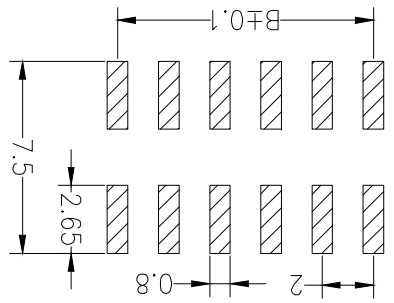
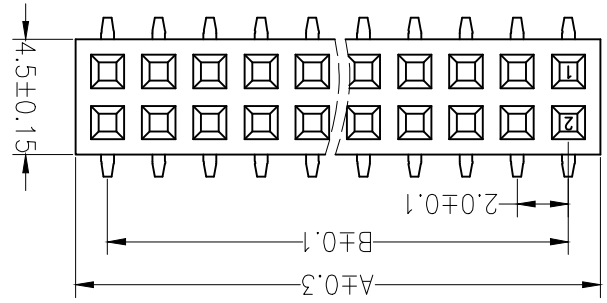
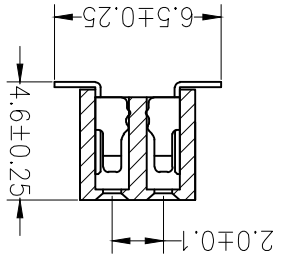
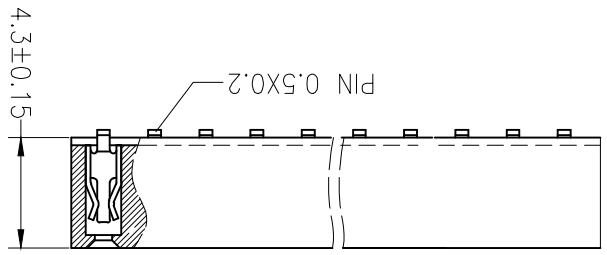


Ordering Information

25 43 U-2 XX X W XX M N X 01

43=Ht4.3mm
 Plastic high
 No. of Pins Insulator Material Post
 Per Row 01~40P
 Option N=w/o post
 A=FT
 B=PA66
 C=PA6T
 D=PA6
 E=PA9T
 F=LCP
 G6:10U" Gold
 G5:5U" Gold
 G4:3U" Gold
 G3:2U" Gold
 G2:1.5U" Gold
 G1:1U" Gold
 N=w/o post
 M=Reel+Mylicor
 P=Tube+Cap
 R=Reel+Cap
 S=Tube
 T=Tray
 A=Tray
 0=PC Bag
 01~99 code stream



Recommended P.C.B Layout(Top Side)
 (PCB BOARD TOLERANCE±0.05)

Contacts	Dimensions		Per row
	A	B	
2	4.50	2.00	21
3	6.50	4.00	23
4	8.50	6.00	24
5	10.50	8.00	25
6	12.50	10.00	26
7	14.50	12.00	27
8	16.50	14.00	28
9	18.50	16.00	29
10	20.50	18.00	30
11	22.50	20.00	31
12	24.50	22.00	32
13	26.50	24.00	33
14	28.50	26.00	34
15	30.50	28.00	35
16	32.50	30.00	36
17	34.50	32.00	37
18	36.50	34.00	38
19	38.50	36.00	39
20	40.50	38.00	40

Dimen Sions List

SPECIFICATIONS
 Rated Current:1.5AMP
 Contact Resistance:20mΩ Max
 Withstand Voltage:500V AC/DC
 Insulation Resistance:1000MΩ Min
 Operation Temperature:-40°C to +105°C
 Contact Material:Brass
 Contact Plating:Au or Sn Over Ni
 Insulator Material:Polyester(UL94V-0)
 Standard: PA6T
 Max.Processing Temp: 230°C for 30-60 seconds
 (260°C for 10 seconds)

HOUBC

深圳市华宇创精密电子有限公司

TOLERANCE:
 X.X ±0.30
 X.XX ±0.25
 X.XXX ±0.15

SCALE:1:1 SIZE: A4

UNIT: mm [inch]

DRAWN BY: 陈一鸣	CHECKED BY: 马跃	APPROVED BY:	DATE: 2014-02-23
PART NAME: 2.00X4.3FH 2XNPIN W6.5 SMT	PART NO.: 2543U-2XXXXMXXNXX01	MOLD NO.:	DATE: 2014-02-23
SHEET NO.:		DRAW NO.:	DATE: 2014-02-23
1 OF 1		HYC-1812011052	

X-ON Electronics

Largest Supplier of Electrical and Electronic Components

Click to view similar products for [Headers & Wire Housings](#) category:

Click to view products by [HOAUC](#) manufacturer:

Other Similar products are found below :

[95000-104TRLF](#) [10135584-644402LF](#) [DF62W-EP2022PCA](#) [95000-106TRLF](#) [DF62W-2022SCA](#) [DF62W-EP2022PC](#) [2203348](#) [DF62W-2022SC](#) [1084018](#) [1029039](#) [1084017](#) [802-10-012-10-002000](#) [1112640](#) [1112639](#) [891-007-9SS-BST1T](#) [000-34000](#) [0008550134](#) [0009482033](#) [0009507031](#) [57102-F02-18ULF](#) [57102-S06-03LF](#) [57202-S52-04LF](#) [PCN6-15S-2.5E](#) [0039019024](#) [58102-G61-06LF](#) [582553-1](#) [0009485154](#) [0009508121](#) [0022285053](#) [0050291907](#) [018731A](#) [LY20-4P-DT1-P1E-BR](#) [02.125.8002.8](#) [60101931](#) [60598-1 \(Cut Strip\)](#) [M1625-3R/100](#) [61062-3](#) [61082-181009](#) [CSU011177004](#) [636-1427](#) [638009-1](#) [641938-9](#) [641991-4](#) [644168-1](#) [644827-2](#) [647662-1](#) [65039-019ELF](#) [65692-001LF](#) [65781-018](#) [65781-047](#)