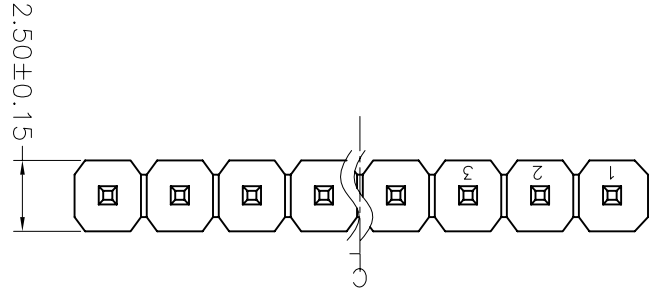
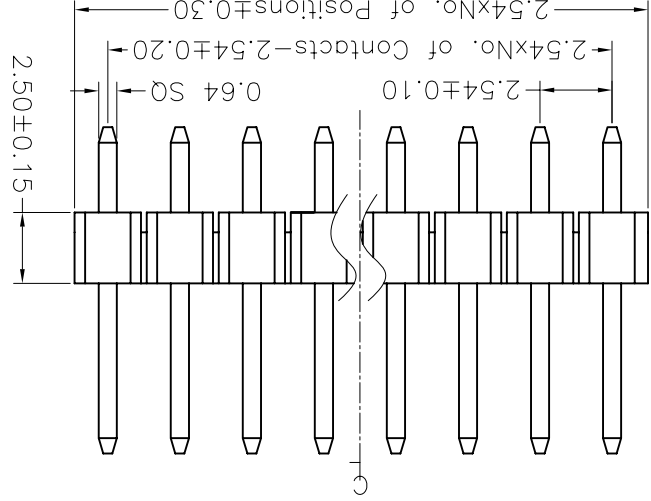
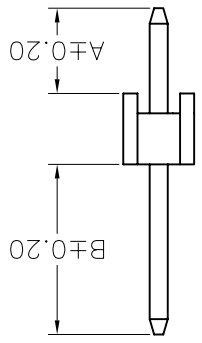


MINTRON CO., LTD.		TITLE: MTP125-11XXS1		DWG NO.:		SCALE: 1/1		SHEET: 1/1		REV: A	
NAME (INTENDED USE)		PART NO. (INTENDED USE)		APPD: SUNNY		CHKD: LISA		DR: ZOE		2006-11-28	
UNITS: mm		MATERIAL: X ± 2°		FINISH: .XX ± 0.10		QTY:		DR: ZOE		2006-11-28	
X ± 0.30		X ± 0.20		.XX ± 0.10		.XXX ± 0.05		DR: ZOE		2006-11-28	

Dimension antitheses list		
ITEM	A	B
Standard	3.00	6.00
Alternate		



Recommended P.C.B Layout (Top Side)
 (PCB BOARD TOLERANCE ± 0.05)
 ø 1.02

NOTES:
 Current Rating: 3.0AMP
 Contact Resistance: 20mΩ max
 Withstand Voltage: 500V AC/DC
 Insulation Resistance: 100MΩ min
 Operation Temperature: -40°C to +105°C
 Contact Material: Brass
 Contact plating: Au or Sn Over Ni
 Insulator Material: PBT or PA6T+30%GF (UL94V-0)

MTP125-11XXS1
 No. of Pins per Row: 01~40

REV.	ECN. NO.	APPD.
A		

X-ON Electronics

Largest Supplier of Electrical and Electronic Components

Click to view similar products for [Headers & Wire Housings](#) category:

Click to view products by [MINTRON](#) manufacturer:

Other Similar products are found below :

[95000-104TRLF](#) [10135584-644402LF](#) [DF62W-EP2022PCA](#) [95000-106TRLF](#) [DF62W-2022SCA](#) [DF62W-EP2022PC](#) [2203348](#) [DF62W-2022SC](#) [1084018](#) [1029039](#) [1084017](#) [802-10-012-10-002000](#) [1112640](#) [1112639](#) [891-007-9SS-BST1T](#) [000-34000](#) [0008550134](#) [0009482033](#) [0009507031](#) [57102-F02-18ULF](#) [57102-S06-03LF](#) [57202-S52-04LF](#) [PCN6-15S-2.5E](#) [0039019024](#) [58102-G61-06LF](#) [582553-1](#) [0009485154](#) [0009508121](#) [0022285053](#) [0050291907](#) [018731A](#) [LY20-4P-DT1-P1E-BR](#) [02.125.8002.8](#) [60101931](#) [60598-1 \(Cut Strip\)](#) [M1625-3R/100](#) [61062-3](#) [61082-181009](#) [CSU011177004](#) [636-1427](#) [638009-1](#) [641938-9](#) [641991-4](#) [644168-1](#) [644827-2](#) [647662-1](#) [65039-019ELF](#) [65692-001LF](#) [65781-018](#) [65781-047](#)