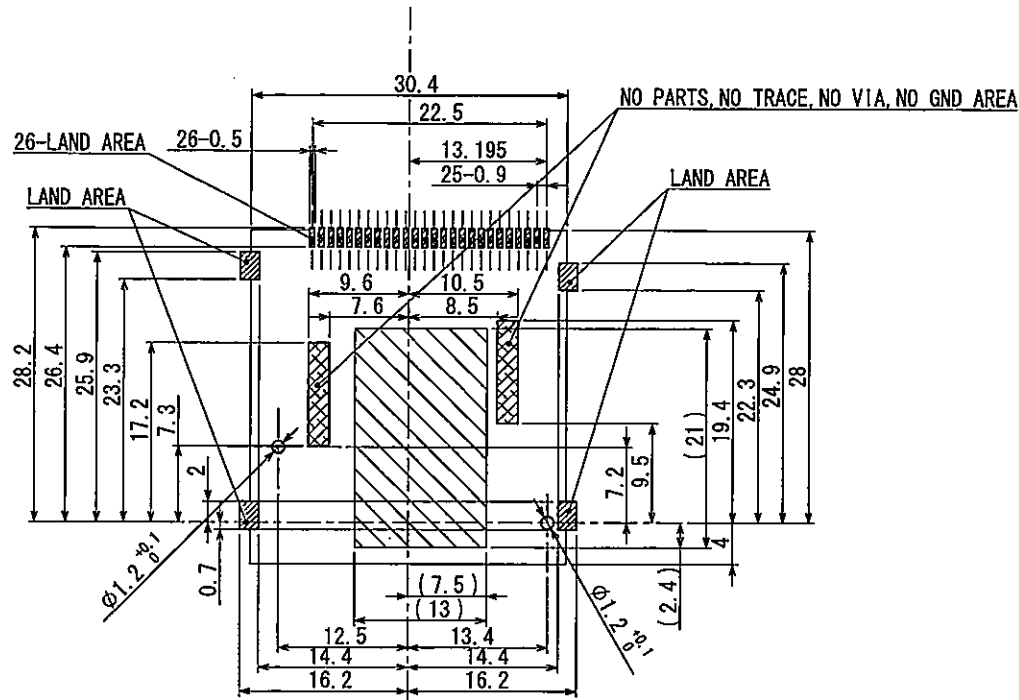

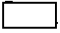

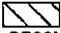
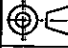




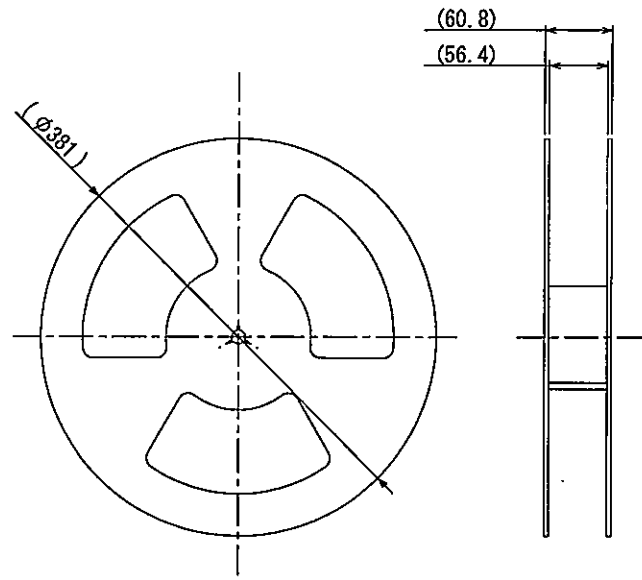
PRELIMINARY



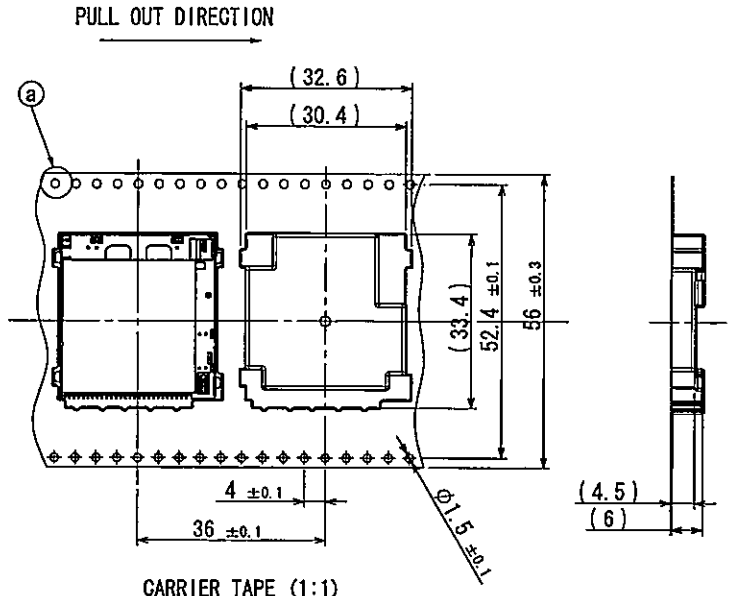
-  LAND AREA
-  ONLY GND TRACE EXPOSED POSSIBLE.  
NO PARTS / NO TRACE / NO VIA AREA
-  NO PARTS / NO TRACE / NO VIA / NO GND AREA
-  NO PARTS AREA  
RECOMMENDED P. W. BOARD LAYOUT  
ALL TOLERANCE UNDESCRIBED ARE  $\pm 0.05$

|       |               |   |       |                                |                      |
|-------|---------------|---|-------|--------------------------------|----------------------|
|       |               |   |       | <b>ALPS ELECTRIC CO., LTD.</b> |                      |
| DSGD. | Mar. 02. 2012 | SCALE   | NO.   | SCDG6A0200                     |                      |
| CHKD. | Y. Arimori    |   |       |                                |                      |
|       | Mar. 02. 2012 |   |       |                                |                      |
| APPD. | T. Tanaka     |  | TITLE | PRODUCT DRAWING (2/3)          |                      |
|       | Mar. 02. 2012 |   |       |                                |                      |
| SYMB  | DATE          | AFFD  | CHKD  | DSGD                           | UNIT                 |
|       |               |   |       |                                | mm                   |
|       |               |   |       |                                | DOCUMENT NO.         |
|       |               |   |       |                                | SCDG6A0200, AE23, 00 |

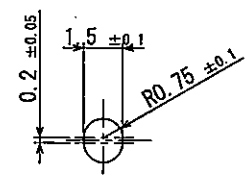
PRELIMINARY



REEL CORE



CARRIER TAPE (1:1)



Detail of (a)

2. Specification of taping : TAPE-S-050  
NOTE 1. 300pcs/reel

|      |      |      |      |      |                                |                             |       |       |                       |
|------|------|------|------|------|--------------------------------|-----------------------------|-------|-------|-----------------------|
|      |      |      |      |      | <b>ALPS ELECTRIC CO., LTD.</b> |                             |       |       |                       |
|      |      |      |      |      | DSGD                           | Mar. 02. 2012<br>Y. Arimori | SCALE | NO.   | SCDG6A0200            |
|      |      |      |      |      | CHKD                           | Mar. 02. 2012<br>T. Tanaka  |       | TITLE | PRODUCT DRAWING (3/3) |
|      |      |      |      |      | APPD                           | Mar. 02. 2012<br>T. Tanaka  |       | UNIT  | DOCUMENT NO.          |
| SYMB | DATE | APPD | CHKD | DSGD |                                |                             |       |       |                       |

## X-ON Electronics

Largest Supplier of Electrical and Electronic Components

*Click to view similar products for [Standard Card Edge Connectors](#) category:*

*Click to view products by [ALPS](#) manufacturer:*

Other Similar products are found below :

[6565204-6](#) [PKC-156](#) [1437274-4](#) [147889-1](#) [1489165-4](#) [EBT156-12B1X](#) [EBT15622B2X](#) [EBT156-22R2W](#) [1-582587-1](#) [1-582589-1](#) [2-6437275-9](#) [284-0102-12100](#) [306022901000000](#) [307-012-502-202](#) [307-024-526-201](#) [307-056-520-300](#) [307-080-526-208](#) [1926088-2](#) [245-062-520-350](#) [287-0032-12101](#) [306-010-500-112](#) [306-028-525-102](#) [306-240-318](#) [307-036-502-202](#) [307-036-521-301](#) [307-072-526-202](#) [345-060-559-303](#) [368-004-520-201](#) [392-008-559-201](#) [534671-1](#) [5-530501-5](#) [341-240-317](#) [345-029-520-300](#) [345-030-500-301](#) [345-044-500-300](#) [345-220-058](#) [346-240-318](#) [357-030-526-201](#) [387-012-523-300](#) [395-044-520-300](#) [395-100-524-300](#) [50-12B-10](#) [50-6SN-5](#) [09-07-2032](#) [10035388-106LF](#) [10035388-802LF](#) [10115859-011LF](#) [10122859-009LF](#) [101269333204245CLF](#) [10127905-B04B24BLF](#)