

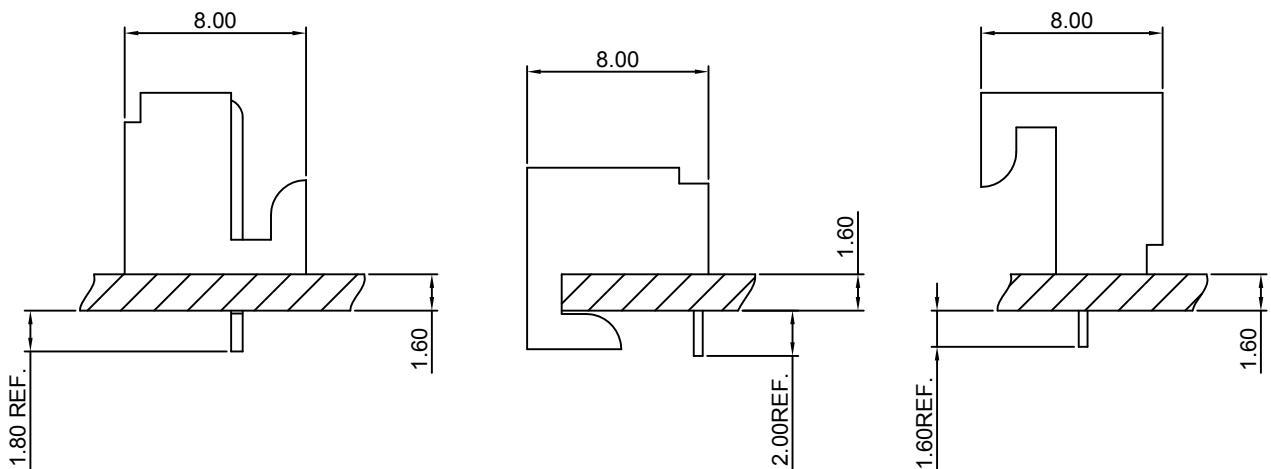
Specifications

- Current rating: 2.5A AC, DC
- Voltage rating: 250V AC, DC
- Temperature range: -40°C ~ +105°C
- Contact resistance: 20mΩ Max.
- Insulation resistance: 100MΩ Min.
- Withstanding voltage: 500V AC/minute
- *Compliant with RoHS and REACH*
- *Meet the HF/Halogen Free need to customize*
- *Contact CJT for details*

Standards



Assembly layout



B2541AW-XP

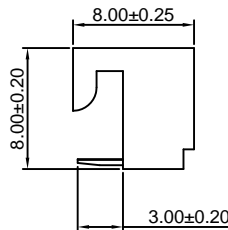
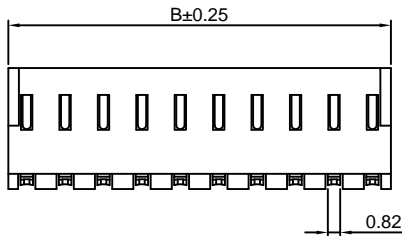
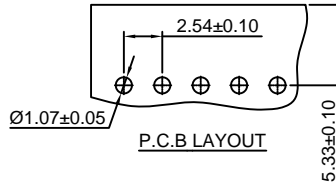
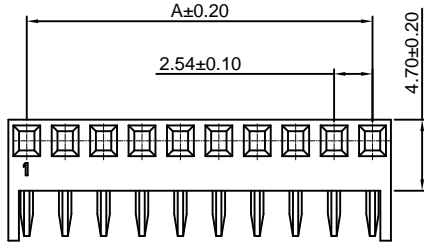
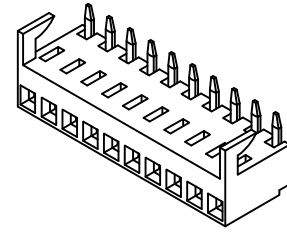
2.54mm Pitch PC Board Connector-Ringnt Angle

Reference Informations:

- *Material:Pin:Phosphor Bronze/Tin over Nickel
Insulator:Nylon 66,UL94V-0
- *Mates with CJT A2541WV,WR,WVA,WRA-XP, A2543WV,WR,WVA,WRA-XP series Wafer
- *Color:White

Ordering Information:

- B2541AW-XP - *****
 1 2
- 1.Part No.
2.Material:
(blank):Nylon 66,UL94V-0
GWT:Nylon 66,UL94V-0,GWT 750°C



Ordering Information & Dimensions:

PART NO.	Dimensions	
	A	B
2P	2.54	4.98
3P	5.08	7.52
4P	7.62	10.06
5P	10.16	12.60
6P	12.70	15.14
7P	15.24	17.68
8P	17.78	20.22
9P	20.32	22.76
10P	22.86	25.30
11P	25.40	27.84
12P	27.94	30.38
13P	30.48	32.92
14P	33.02	35.46
15P	35.56	38.00
16P	38.10	40.54

Unit: mm

B2541BW-XP

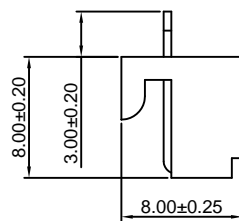
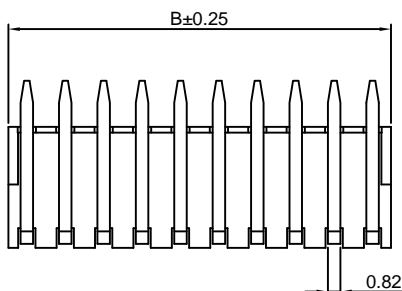
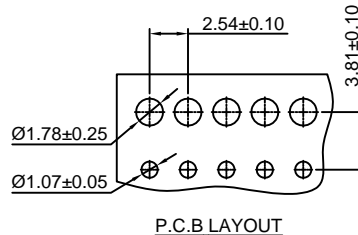
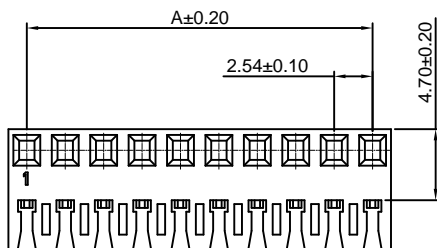
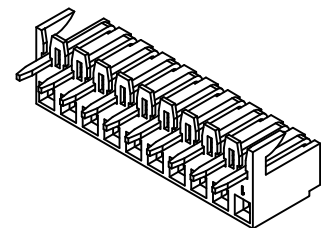
2.54mm Pitch PC Board Connertor-Bottom Entry

Reference Informations:

- *Material:Pin:Phosphor Bronze/Tin over Nickel
Insulator:Nylon 66,UL94V-0
- *Mates with CJT A2541WV,WR,WVA,WRA-XP, A2543WV,WR,WVA,WRA-XP series Wafer
- *Color:White

Ordering Information:

- B2541BW-XP - *****
 1 2
- 1.Part No.
2.Material:
(blank):Nylon 66,UL94V-0
GWT:Nylon 66,UL94V-0,GWT 750°C



Ordering Information & Dimensions:

PART NO.	Dimensions	
	A	B
2P	2.54	4.98
3P	5.08	7.52
4P	7.62	10.06
5P	10.16	12.60
6P	12.70	15.14
7P	15.24	17.68
8P	17.78	20.22
9P	20.32	22.76
10P	22.86	25.30
11P	25.40	27.84
12P	27.94	30.38
13P	30.48	32.92
14P	33.02	35.46
15P	35.56	38.00
16P	38.10	40.54

Unit: mm

B2541CW-XP

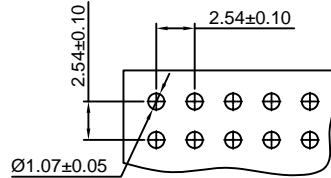
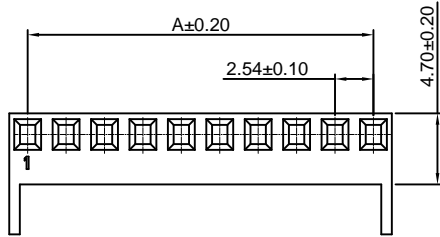
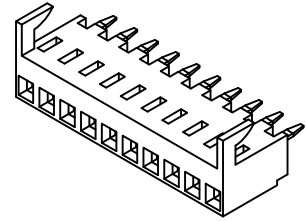
2.54mm Pitch PC Board Connector-Top Entry

Reference Informations:

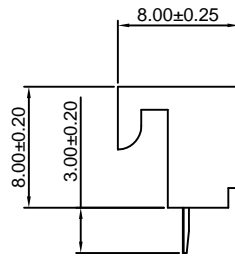
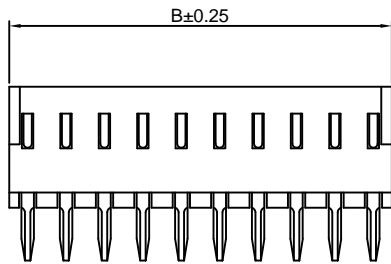
- *Material:Pin:Phosphor Bronze/Tin over Nickel
Insulator:Nylon 66,UL94V-0
- *Mates with CJT A2541WV,WR,WVA,WRA-XP,
A2543WV,WR,WVA,WRA-XP series Wafer
- *Color:White

Ordering Information:

- B2541CW-XP - *****
 $\frac{1}{2}$
- 1.Part No.
 - 2.Material:
 (blank):Nylon 66,UL94V-0
 GWT:Nylon 66,UL94V-0,GWT 750°C



P.C.B LAYOUT



Ordering Information & Dimensions:

PART NO.	Dimensions	
	A	B
2P	2.54	4.98
3P	5.08	7.52
4P	7.62	10.06
5P	10.16	12.60
6P	12.70	15.14
7P	15.24	17.68
8P	17.78	20.22
9P	20.32	22.76
10P	22.86	25.30
11P	25.40	27.84
12P	27.94	30.38
13P	30.48	32.92
14P	33.02	35.46
15P	35.56	38.00
16P	38.10	40.54

Unit: mm

X-ON Electronics

Largest Supplier of Electrical and Electronic Components

Click to view similar products for [Headers & Wire Housings](#) category:

Click to view products by [Changjiang](#) manufacturer:

Other Similar products are found below :

[95000-104TRLF](#) [10135584-644402LF](#) [DF62W-EP2022PCA](#) [95000-106TRLF](#) [DF62W-2022SCA](#) [DF62W-EP2022PC](#) [2203348](#) [DF62W-2022SC](#) [1084018](#) [1029039](#) [1084017](#) [802-10-012-10-002000](#) [1112640](#) [1112639](#) [891-007-9SS-BST1T](#) [000-34000](#) [0008550134](#) [0009482033](#) [0009507031](#) [57102-F02-18ULF](#) [57102-S06-03LF](#) [57202-S52-04LF](#) [PCN6-15S-2.5E](#) [0039019024](#) [58102-G61-06LF](#) [582553-1](#) [0009485154](#) [0009508121](#) [0022285053](#) [0050291907](#) [018731A](#) [LY20-4P-DT1-P1E-BR](#) [02.125.8002.8](#) [60101931](#) [60598-1 \(Cut Strip\)](#) [M1625-3R/100](#) [61062-3](#) [61082-181009](#) [CSU011177004](#) [636-1427](#) [638009-1](#) [641938-9](#) [641991-4](#) [644168-1](#) [644827-2](#) [647662-1](#) [65039-019ELF](#) [65692-001LF](#) [65781-018](#) [65781-047](#)