

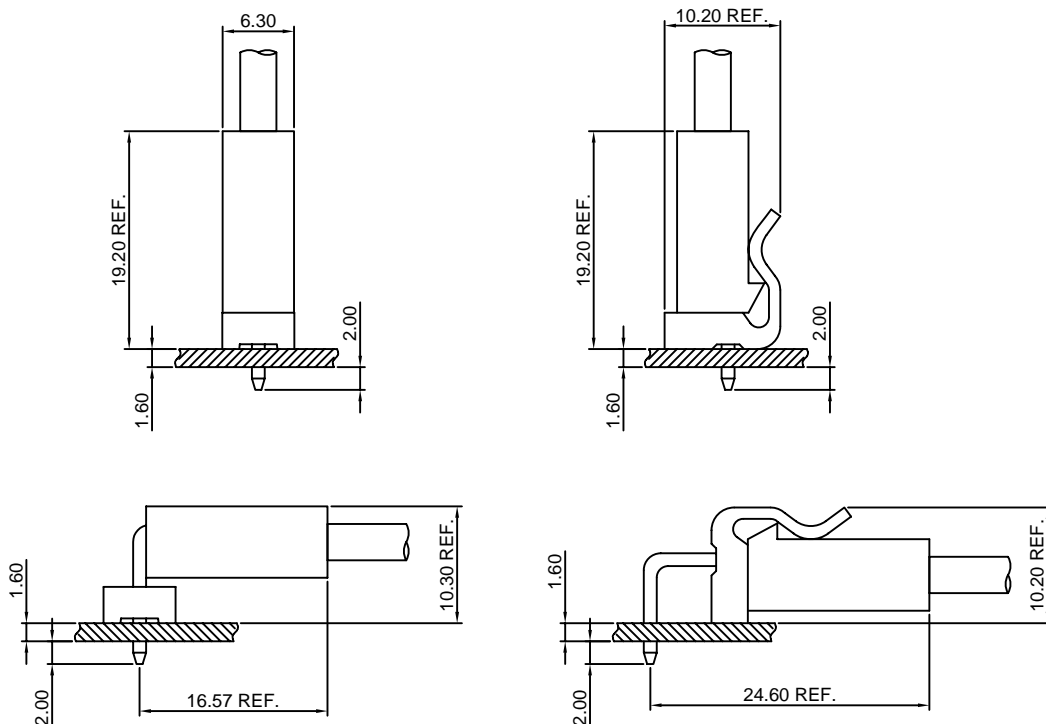
## Specifications

- Current rating:7A AC,DC
- Voltage rating:250V AC,DC
- Temperature range:-40°C~+105°C
- Contact resistance:10mΩMax.
- Insulation resistance:1000MΩMin.
- Withstanding voltage:1500V AC/minute
- \*Compliant with RoHS and REACH\*
- \*Meet the HF/Halogen Free,GWT/Glow wire Test (IEC60335-1) request,need to customize\*
- \*Contact CJT for details\*

## Standards



## Assembly layout

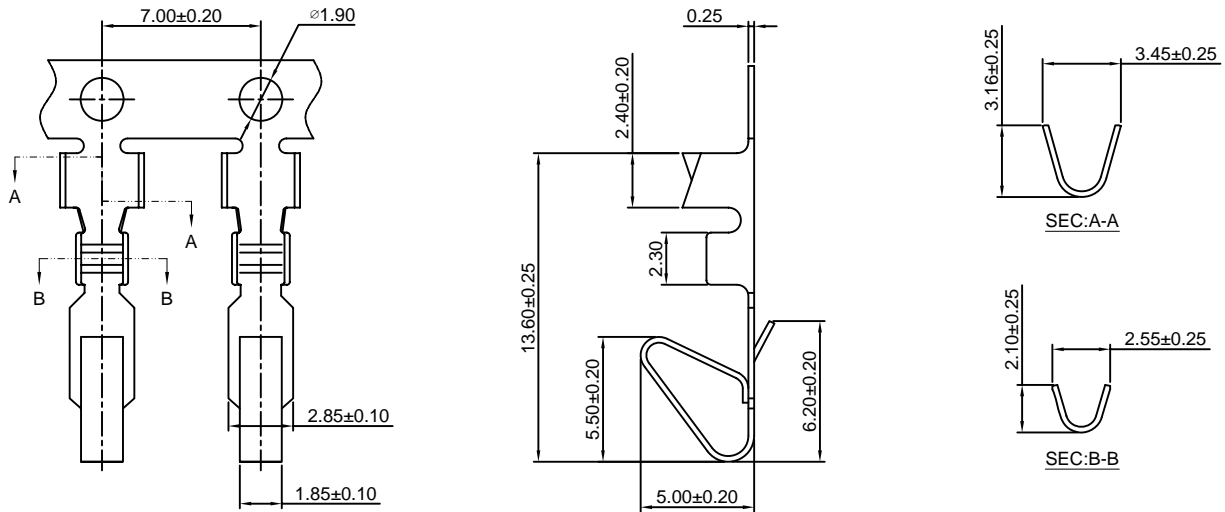


# A3961-T

3.96mm pitch Crimp Terminal

#### Reference Informations:

\*Used in CJT A3961H-XP, A3961H-XP-2, A3961H-XP-3, A5081H-XP series Housing



Ordering information & Specifications:

Unit:mm

| Part NO. | Wire Range | Insulation O.D. | Material        | Finish           | Qty/reel  |
|----------|------------|-----------------|-----------------|------------------|-----------|
| A3961-TB | AWG#18-#24 | 2.80mm(max)     | Brass           | Tin over Nickel  | 6,000 PCS |
| A3961-TP | AWG#18-#24 | 2.80mm(max)     | Phosphor Bronze | Tin over Nickel  | 6,000 PCS |
| A3961-GB | AWG#18-#24 | 2.80mm(max)     | Brass           | Gold over Nickel | 6,000 PCS |
| A3961-GP | AWG#18-#24 | 2.80mm(max)     | Phosphor Bronze | Gold over Nickel | 6,000 PCS |

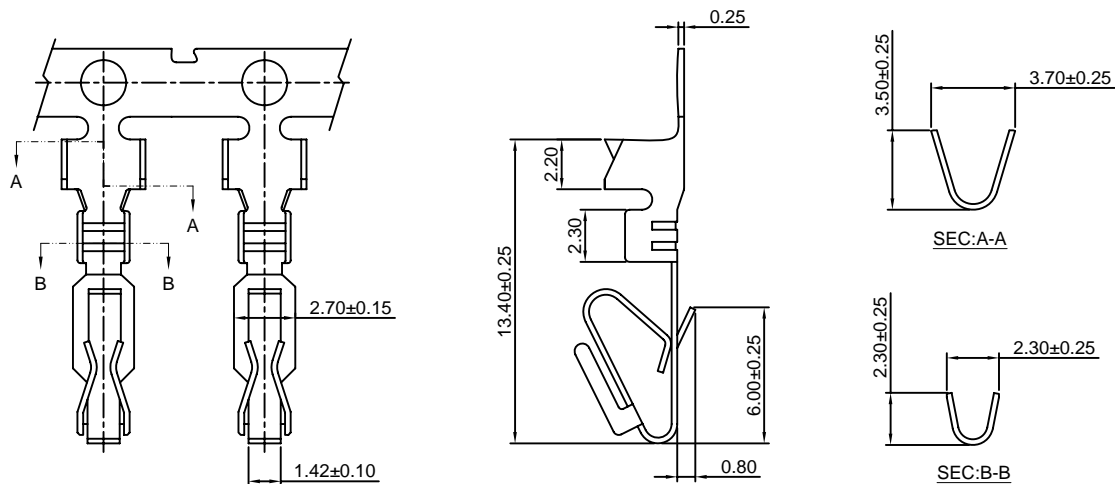
Optional Gold plating available but MOQ requested

# A3961-T-1

3.96mm pitch Crimp Terminal

#### Reference Informations:

\*Used in CJT A3961H-XP, A3961H-XP-2, A3961H-XP-3, A5081H-XP series Housing



Ordering information & Specifications:

Unit:mm

| Part NO.   | Wire Range | Insulation O.D. | Material        | Finish           | Qty/reel  |
|------------|------------|-----------------|-----------------|------------------|-----------|
| A3961-TB-1 | AWG#18-#24 | 2.80mm(max)     | Brass           | Tin over Nickel  | 6,000 PCS |
| A3961-TP-1 | AWG#18-#24 | 2.80mm(max)     | Phosphor Bronze | Tin over Nickel  | 6,000 PCS |
| A3961-GB-1 | AWG#18-#24 | 2.80mm(max)     | Brass           | Gold over Nickel | 6,000 PCS |
| A3961-GP-1 | AWG#18-#24 | 2.80mm(max)     | Phosphor Bronze | Gold over Nickel | 6,000 PCS |

Optional Gold plating available but MOQ requested

### A3961H-XP

3.96mm pitch Housing

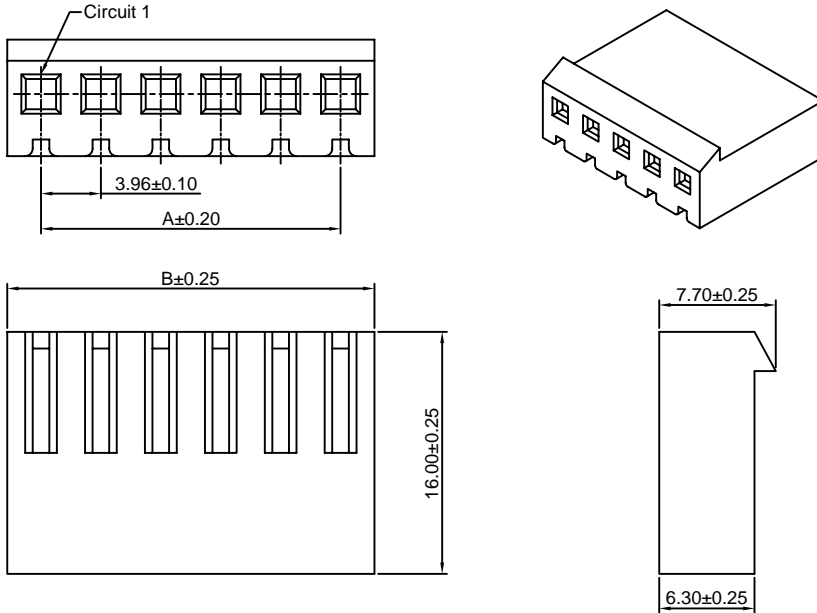
**Reference Informations:**

- \*Material:Nylon 66,UL94V-2
- \*Suitable CJT A3961-T(-1) series Terminal
- \*Mates with CJT A3961WV,WR,WVA,WRA-XP(-A), A3961WV,WVA-XP-R(-A),A3961WVB-F,WRB-F-XP, A3961WVB,WRB,WVC,WRC-XP series Wafer
- \*Color:Natural

**Ordering Information:**

- A3961H-XP - \*\*\*  
 1                    2
- 1.Part No.
  - 2.Material:  
 (blank):Nylon 66,UL94V-2  
 V0:Nylon 66,UL94V-0  
 GWT:Nylon 66,UL94V-0,GWT 750°C

**Ordering Information & Dimensions:**



| PART NO. | Dimensions |       |
|----------|------------|-------|
|          | A          | B     |
| 2P       | 3.96       | 8.43  |
| 3P       | 7.92       | 12.39 |
| 4P       | 11.88      | 16.35 |
| 5P       | 15.84      | 20.31 |
| 6P       | 19.80      | 24.27 |
| 7P       | 23.76      | 28.23 |
| 8P       | 27.72      | 32.19 |
| 9P       | 31.68      | 36.15 |
| 10P      | 35.64      | 40.11 |
| 11P      | 39.60      | 44.07 |
| 12P      | 43.56      | 48.03 |
| 13P      | 47.52      | 51.99 |
| 14P      | 51.48      | 55.95 |
| 15P      | 55.44      | 59.91 |
| 16P      | 59.40      | 63.87 |
| 17P      | 63.36      | 67.83 |
| 18P      | 67.32      | 71.79 |
| 19P      | 71.28      | 75.75 |
| 20P      | 75.24      | 79.71 |
| 21P      | 79.20      | 83.67 |
| 22P      | 83.16      | 87.63 |
| 23P      | 87.12      | 91.59 |
| 24P      | 91.08      | 95.55 |

Unit: mm

### A3961H-XP-2

3.96mm pitch Housing

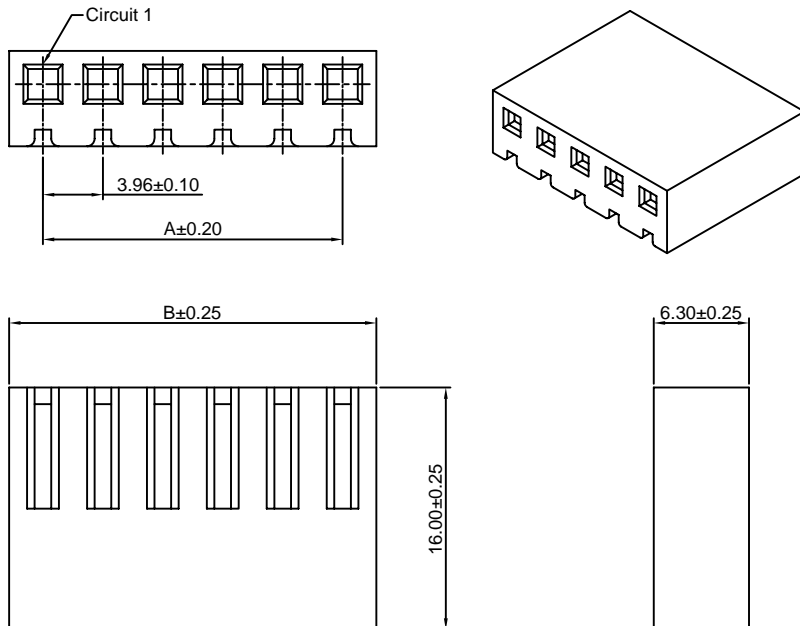
**Reference Informations:**

- \*Material:Nylon 66,UL94V-2
- \*Suitable CJT A3961-T(-1) series Terminal
- \*Mates with CJT A3961WV,WR,WVA,WRA-XP(-A), A3961WV,WVA-XP-R(-A),A3961WVB-F,WRB-F-XP, A3961WVB,WRB,WVC,WRC-XP series Wafer
- \*Color:Natural

**Ordering Information:**

- A3961H-XP-2 - \*\*\*  
 1                    2
- 1.Part No.
  - 2.Material:  
 (blank):Nylon 66,UL94V-2  
 V0:Nylon 66,UL94V-0  
 GWT:Nylon 66,UL94V-0,GWT 750°C

**Ordering Information & Dimensions:**



| PART NO. | Dimensions |       |
|----------|------------|-------|
|          | A          | B     |
| 2P       | 3.96       | 8.43  |
| 3P       | 7.92       | 12.39 |
| 4P       | 11.88      | 16.35 |
| 5P       | 15.84      | 20.31 |
| 6P       | 19.80      | 24.27 |
| 7P       | 23.76      | 28.23 |
| 8P       | 27.72      | 32.19 |
| 9P       | 31.68      | 36.15 |
| 10P      | 35.64      | 40.11 |
| 11P      | 39.60      | 44.07 |
| 12P      | 43.56      | 48.03 |
| 13P      | 47.52      | 51.99 |
| 14P      | 51.48      | 55.95 |
| 15P      | 55.44      | 59.91 |
| 16P      | 59.40      | 63.87 |
| 17P      | 63.36      | 67.83 |
| 18P      | 67.32      | 71.79 |
| 19P      | 71.28      | 75.75 |
| 20P      | 75.24      | 79.71 |
| 21P      | 79.20      | 83.67 |
| 22P      | 83.16      | 87.63 |
| 23P      | 87.12      | 91.59 |
| 24P      | 91.08      | 95.55 |

Unit: mm

### A3961H-XP-3-V0

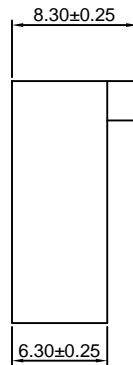
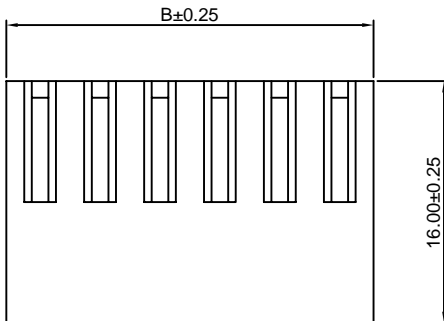
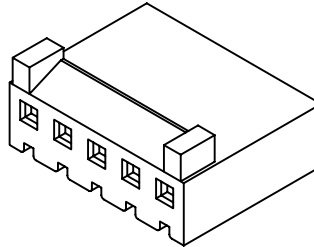
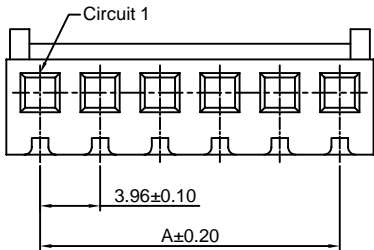
3.96mm pitch Housing

**Reference Informations:**

- \*Material: Nylon 66, UL94V-0
- \*Suitable CJT A3961-T(-1) series Terminal
- \*Mates with CJT A3961WVA, WRA-XP(-A), A3961WVA-XP-R(-A), A3961WVB-F, WRB-F-XP, A3961WVB, WRB-XP, D3961WV, WR-XP series Wafer
- \*Color: Natural

**Ordering Information:**

- A3961H-XP-3 - \*\*\*  
 1                    2
1. Part No.
  2. Material:  
 V0: Nylon 66, UL94V-0  
 GWT: Nylon 66, UL94V-0, GWT 750°C



**Ordering Information & Dimensions:**

| PART NO. | Dimensions |       |
|----------|------------|-------|
|          | A          | B     |
| 2P       | 3.96       | 8.43  |
| 3P       | 7.92       | 12.39 |
| 4P       | 11.88      | 16.35 |
| 5P       | 15.84      | 20.31 |
| 6P       | 19.80      | 24.27 |
| 7P       | 23.76      | 28.23 |
| 8P       | 27.72      | 32.19 |
| 9P       | 31.68      | 36.15 |
| 10P      | 35.64      | 40.11 |
| 11P      | 39.60      | 44.07 |
| 12P      | 43.56      | 48.03 |
| 13P      | 47.52      | 51.99 |
| 14P      | 51.48      | 55.95 |
| 15P      | 55.44      | 59.91 |
| 16P      | 59.40      | 63.87 |
| 17P      | 63.36      | 67.83 |
| 18P      | 67.32      | 71.79 |
| 19P      | 71.28      | 75.75 |
| 20P      | 75.24      | 79.71 |
| 21P      | 79.20      | 83.67 |
| 22P      | 83.16      | 87.63 |
| 23P      | 87.12      | 91.59 |
| 24P      | 91.08      | 95.55 |

Unit: mm

### A3961WV-XP

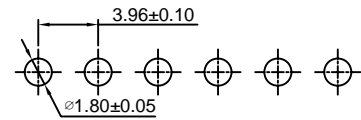
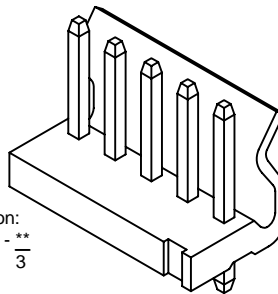
3.96mm pitch 180° Wafer

**Reference Informations:**

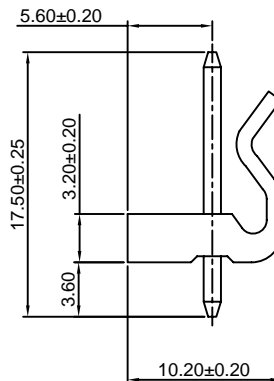
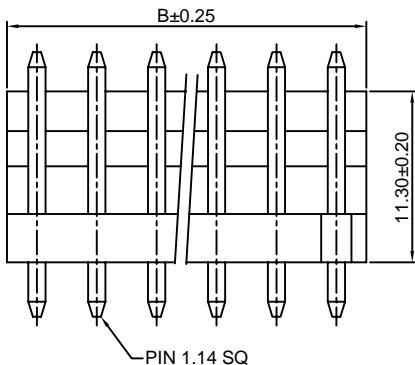
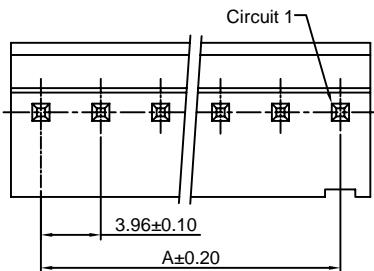
- \*Material: Pin: Brass/Tin over Nickel  
 Insulator: Nylon 66, UL94V-2
- \*Mates with CJT A3961H-XP(-2) or A3964H-XP, A3964H-XP-A, A3964H-XP-C series Housing
- \*Color: Natural

**Ordering Information:**

- A3961WV-XP - \*\*\* - \*\*  
 1                    2                    3
1. Part No.
  2. Material:  
 (blank): Nylon 66, UL94V-2  
 V0: Nylon 66, UL94V-0  
 GWT: Nylon 66, UL94V-0, GWT 750°C
  3. Finish:  
 (blank): Tin over Nickel  
 G: Gold over Nickel



P.C.B LAYOUT



**Ordering Information & Dimensions:**

| PART NO. | Dimensions |       |
|----------|------------|-------|
|          | A          | B     |
| 2P       | 3.96       | 8.43  |
| 3P       | 7.92       | 12.39 |
| 4P       | 11.88      | 16.35 |
| 5P       | 15.84      | 20.31 |
| 6P       | 19.80      | 24.27 |
| 7P       | 23.76      | 28.23 |
| 8P       | 27.72      | 32.19 |
| 9P       | 31.68      | 36.15 |
| 10P      | 35.64      | 40.11 |
| 11P      | 39.60      | 44.07 |
| 12P      | 43.56      | 48.03 |
| 13P      | 47.52      | 51.99 |
| 14P      | 51.48      | 55.95 |
| 15P      | 55.44      | 59.91 |
| 16P      | 59.40      | 63.87 |
| 17P      | 63.36      | 67.83 |
| 18P      | 67.32      | 71.79 |
| 19P      | 71.28      | 75.75 |
| 20P      | 75.24      | 79.71 |
| 21P      | 79.20      | 83.67 |
| 22P      | 83.16      | 87.63 |
| 23P      | 87.12      | 91.59 |
| 24P      | 91.08      | 95.55 |

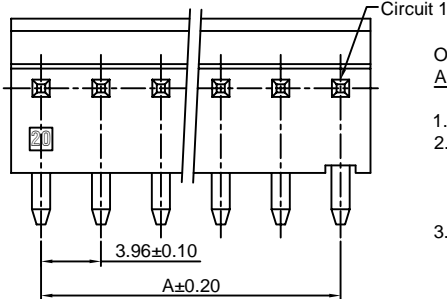
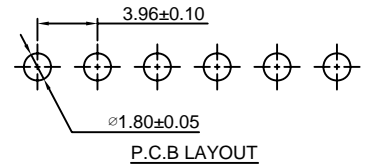
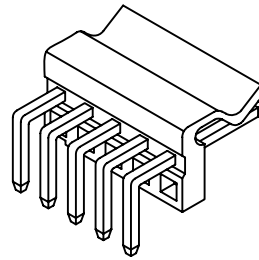
Unit: mm

### A3961WR-XP

3.96mm pitch 90° Wafer

#### Reference Informations:

- \*Material: Pin: Brass/Tin over Nickel  
Insulator: Nylon 66, UL94V-2
- \*Mates with CJT A3961H-XP(-2) or A3964H-XP, A3964H-XP-A, A3964H-XP-C series Housing
- \*Color: Natural

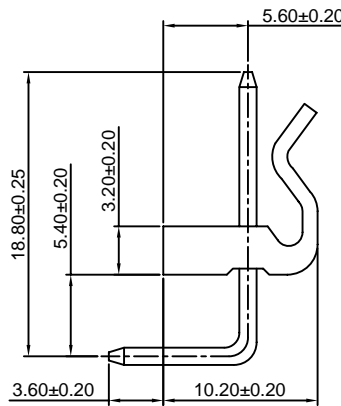
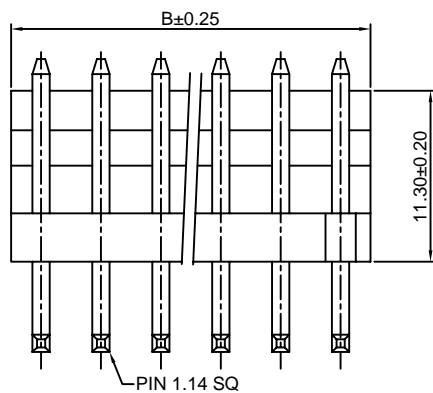


Ordering Information:  
A3961WR-XP - \*\*\* - \*\*  
1 2 3

1. Part No.
2. Material:  
(blank): Nylon 66, UL94V-2  
V0: Nylon 66, UL94V-0  
GWT: Nylon 66, UL94V-0, GWT 750°C
3. Finish:  
(blank): Tin over Nickel  
G: Gold over Nickel

#### Ordering Information & Dimensions:

| PART NO. | Dimensions |       |
|----------|------------|-------|
|          | A          | B     |
| 2P       | 3.96       | 7.92  |
| 3P       | 7.92       | 11.88 |
| 4P       | 11.88      | 15.84 |
| 5P       | 15.84      | 19.80 |
| 6P       | 19.80      | 23.76 |
| 7P       | 23.76      | 27.72 |
| 8P       | 27.72      | 31.68 |
| 9P       | 31.68      | 35.64 |
| 10P      | 35.64      | 39.60 |
| 11P      | 39.60      | 43.56 |
| 12P      | 43.56      | 47.52 |
| 13P      | 47.52      | 51.48 |
| 14P      | 51.48      | 55.44 |
| 15P      | 55.44      | 59.40 |
| 16P      | 59.40      | 63.36 |
| 17P      | 63.36      | 67.32 |
| 18P      | 67.32      | 71.28 |
| 19P      | 71.28      | 75.24 |
| 20P      | 75.24      | 79.20 |
| 21P      | 79.20      | 83.16 |
| 22P      | 83.16      | 87.12 |
| 23P      | 87.12      | 91.08 |
| 24P      | 91.08      | 95.04 |



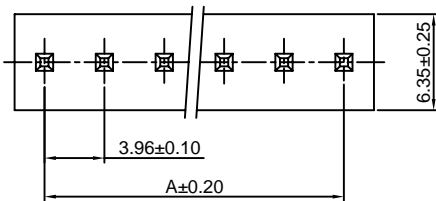
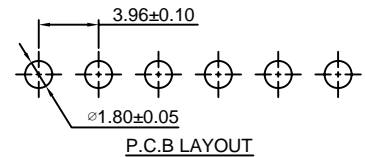
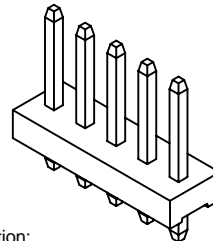
Unit: mm

### A3961WVA-XP

3.96mm pitch 180° Wafer

#### Reference Informations:

- \*Material: Pin: Brass/Tin over Nickel  
Insulator: Nylon 66, UL94V-2
- \*Mates with CJT A3961H-XP(-2/-3) or A3964H-XP, A3964H-XP-A, A3964H-XP-B, A3964H-XP-C series Housing
- \*Color: Natural

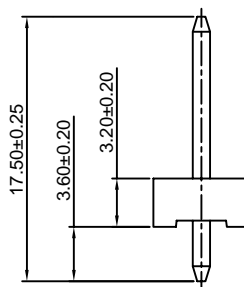
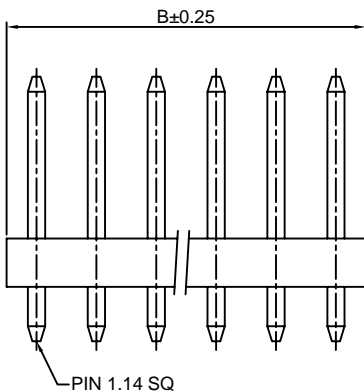


Ordering Information:  
A3961WVA-XP - \*\*\* - \*\*  
1 2 3

1. Part No.
2. Material:  
(blank): Nylon 66, UL94V-2  
V0: Nylon 66, UL94V-0  
GWT: Nylon 66, UL94V-0, GWT 750°C
3. Finish:  
(blank): Tin over Nickel  
G: Gold over Nickel

#### Ordering Information & Dimensions:

| PART NO. | Dimensions |       |
|----------|------------|-------|
|          | A          | B     |
| 2P       | 3.96       | 7.92  |
| 3P       | 7.92       | 11.88 |
| 4P       | 11.88      | 15.84 |
| 5P       | 15.84      | 19.80 |
| 6P       | 19.80      | 23.76 |
| 7P       | 23.76      | 27.72 |
| 8P       | 27.72      | 31.68 |
| 9P       | 31.68      | 35.64 |
| 10P      | 35.64      | 39.60 |
| 11P      | 39.60      | 43.56 |
| 12P      | 43.56      | 47.52 |
| 13P      | 47.52      | 51.48 |
| 14P      | 51.48      | 55.44 |
| 15P      | 55.44      | 59.40 |
| 16P      | 59.40      | 63.36 |
| 17P      | 63.36      | 67.32 |
| 18P      | 67.32      | 71.28 |
| 19P      | 71.28      | 75.24 |
| 20P      | 75.24      | 79.20 |
| 21P      | 79.20      | 83.16 |
| 22P      | 83.16      | 87.12 |
| 23P      | 87.12      | 91.08 |
| 24P      | 91.08      | 95.04 |



Unit: mm

### A3961WRA-XP

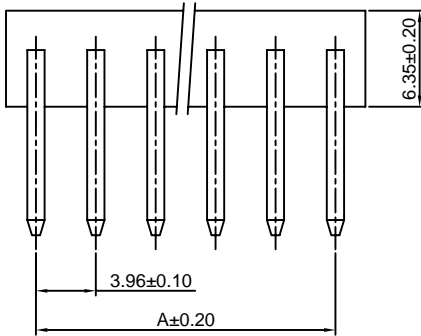
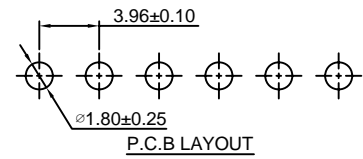
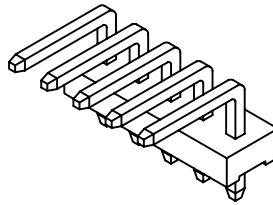
3.96mm pitch 90° Wafer

#### Reference Informations:

\*Material:Pin:Brass/Tin over Nickel  
Insulator:Nylon 66,UL94V-2

\*Mates with CJT A3961H-XP(-2/-3) or A3964H-XP, A3964H-XP-A,A3964H-XP-B,A3964H-XP-C series Housing

\*Color:Natural



#### Ordering Information:

A3961WRA-XP - \*\*\* - \*\*  
1 2 3

1.Part No.

2.Material:

(blank):Nylon 66,UL94V-2

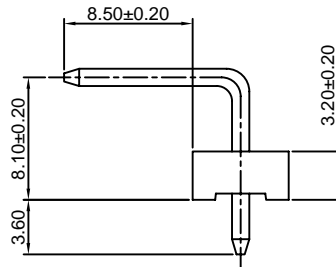
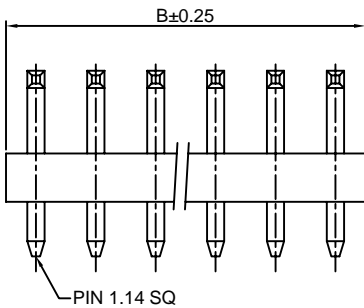
V0:Nylon 66,UL94V-0

GWT:Nylon 66,UL94V-0,GWT 750°C

3.Finish:

(blank):Tin over Nickel

G:Gold over Nickel



#### Ordering Information & Dimensions:

| PART NO. | Dimensions |       |
|----------|------------|-------|
|          | A          | B     |
| 2P       | 3.96       | 7.92  |
| 3P       | 7.92       | 11.88 |
| 4P       | 11.88      | 15.84 |
| 5P       | 15.84      | 19.80 |
| 6P       | 19.80      | 23.76 |
| 7P       | 23.76      | 27.72 |
| 8P       | 27.72      | 31.68 |
| 9P       | 31.68      | 35.64 |
| 10P      | 35.64      | 39.60 |
| 11P      | 39.60      | 43.56 |
| 12P      | 43.56      | 47.52 |
| 13P      | 47.52      | 51.48 |
| 14P      | 51.48      | 55.44 |
| 15P      | 55.44      | 59.40 |
| 16P      | 59.40      | 63.36 |
| 17P      | 63.36      | 67.32 |
| 18P      | 67.32      | 71.28 |
| 19P      | 71.28      | 75.24 |
| 20P      | 75.24      | 79.20 |
| 21P      | 79.20      | 83.16 |
| 22P      | 83.16      | 87.12 |
| 23P      | 87.12      | 91.08 |
| 24P      | 91.08      | 95.04 |

Unit: mm

### A3961WV-XP-R

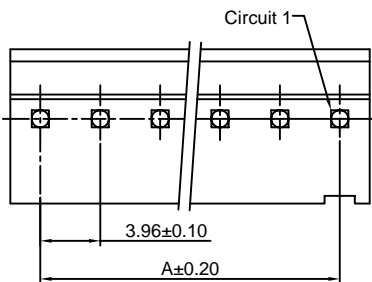
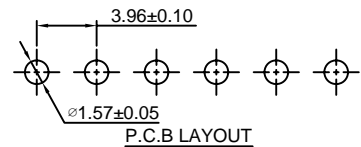
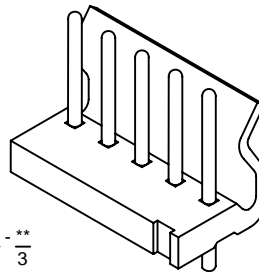
3.96mm pitch 180° Wafer, Round PIN

#### Reference Informations:

\*Material:Pin:Brass/Tin over Nickel  
Insulator:Nylon 66,UL94V-2

\*Mates with CJT A3961H-XP(-2) or A3964H-XP, A3964H-XP-A,A3964H-XP-C series Housing

\*Color:Natural



#### Ordering Information:

A3961WV-XP-R - \*\*\* - \*\*  
1 2 3

1.Part No.

2.Material:

(blank):Nylon 66,UL94V-2

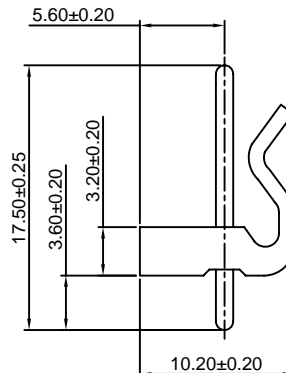
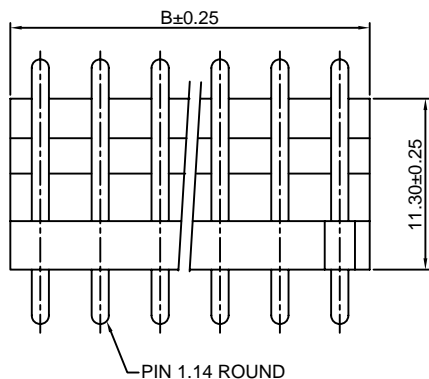
V0:Nylon 66,UL94V-0

GWT:Nylon 66,UL94V-0,GWT 750°C

3.Finish:

(blank):Tin over Nickel

G:Gold over Nickel



#### Ordering Information & Dimensions:

| PART NO. | Dimensions |       |
|----------|------------|-------|
|          | A          | B     |
| 2P       | 3.96       | 7.92  |
| 3P       | 7.92       | 11.88 |
| 4P       | 11.88      | 15.84 |
| 5P       | 15.84      | 19.80 |
| 6P       | 19.80      | 23.76 |
| 7P       | 23.76      | 27.72 |
| 8P       | 27.72      | 31.68 |
| 9P       | 31.68      | 35.64 |
| 10P      | 35.64      | 39.60 |
| 11P      | 39.60      | 43.56 |
| 12P      | 43.56      | 47.52 |
| 13P      | 47.52      | 51.48 |
| 14P      | 51.48      | 55.44 |
| 15P      | 55.44      | 59.40 |
| 16P      | 59.40      | 63.36 |
| 17P      | 63.36      | 67.32 |
| 18P      | 67.32      | 71.28 |
| 19P      | 71.28      | 75.24 |
| 20P      | 75.24      | 79.20 |
| 21P      | 79.20      | 83.16 |
| 22P      | 83.16      | 87.12 |
| 23P      | 87.12      | 91.08 |
| 24P      | 91.08      | 95.04 |

Unit: mm

### A3961WVA-XP-R

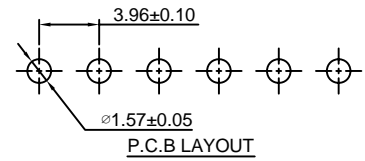
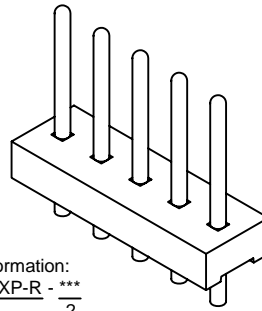
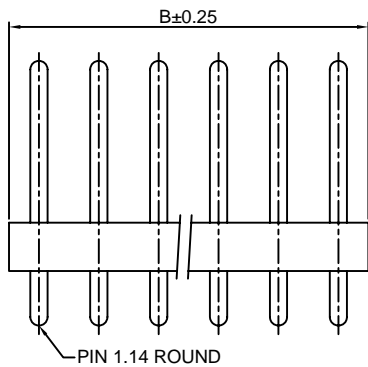
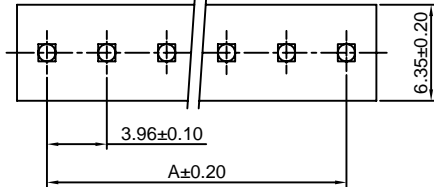
3.96mm pitch 180° Wafer, Round PIN

#### Reference Informations:

\*Material:Pin:Brass/Tin over Nickel  
Insulator:Nylon 66,UL94V-2

\*Mates with CJT A3961H-XP(-2/-3) or A3964H-XP, A3964H-XP-A,A3964H-XP-B,A3964H-XP-C series Housing

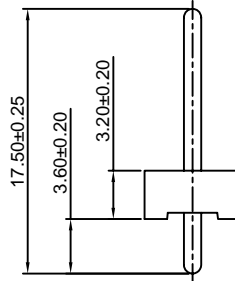
\*Color:Natural



#### Ordering Information:

A3961WVA-XP-R - \*\*\*  
1 2

- Part No.
- Material:  
(blank):Nylon 66,UL94V-2  
V0:Nylon 66,UL94V-0  
GWT:Nylon 66,UL94V-0,GWT 750°C
- Finish:  
(blank):Tin over Nickel  
G:Gold over Nickel



#### Ordering Information & Dimensions:

| PART NO. | Dimensions |       |
|----------|------------|-------|
|          | A          | B     |
| 2P       | 3.96       | 7.92  |
| 3P       | 7.92       | 11.88 |
| 4P       | 11.88      | 15.84 |
| 5P       | 15.84      | 19.80 |
| 6P       | 19.80      | 23.76 |
| 7P       | 23.76      | 27.72 |
| 8P       | 27.72      | 31.68 |
| 9P       | 31.68      | 35.64 |
| 10P      | 35.64      | 39.60 |
| 11P      | 39.60      | 43.56 |
| 12P      | 43.56      | 47.52 |
| 13P      | 47.52      | 51.48 |
| 14P      | 51.48      | 55.44 |
| 15P      | 55.44      | 59.40 |
| 16P      | 59.40      | 63.36 |
| 17P      | 63.36      | 67.32 |
| 18P      | 67.32      | 71.28 |
| 19P      | 71.28      | 75.24 |
| 20P      | 75.24      | 79.20 |
| 21P      | 79.20      | 83.16 |
| 22P      | 83.16      | 87.12 |
| 23P      | 87.12      | 91.08 |
| 24P      | 91.08      | 95.04 |

Unit: mm

### A3961WV-XP-A

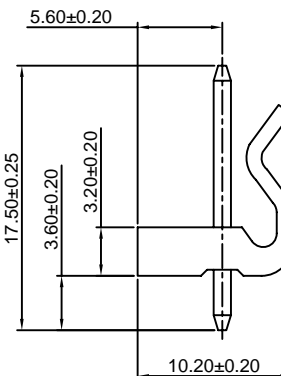
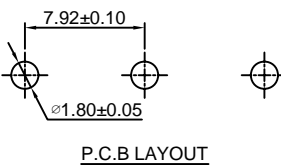
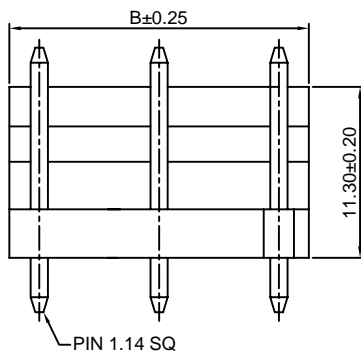
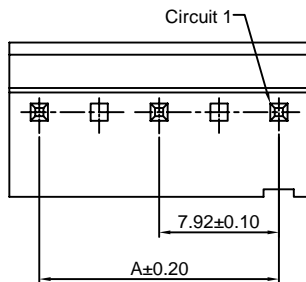
7.92mm pitch 180° Wafer

#### Reference Informations:

\*Material:Pin:Brass/Tin over Nickel  
Insulator:Nylon 66,UL94V-2

\*Mates with CJT A3961H-XP(-2) or A3964H-XP, A3964H-XP-A,A3964H-XP-C series Housing

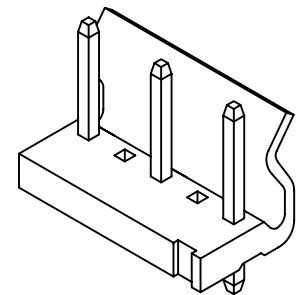
\*Color:Natural



#### Ordering Information:

A3961WV-XP-A - \*\*\* - \*\*  
1 2 3

- Part No.
- Material:  
(blank):Nylon 66,UL94V-2  
V0:Nylon 66,UL94V-0  
GWT:Nylon 66,UL94V-0,GWT 750°C
- Finish:  
(blank):Tin over Nickel  
G:Gold over Nickel



#### Ordering Information & Dimensions:

| PART NO. | Dimensions |       |
|----------|------------|-------|
|          | A          | B     |
| 3P       | 7.92       | 11.88 |
| 5P       | 15.84      | 19.80 |
| 7P       | 23.76      | 27.72 |
| 9P       | 31.68      | 35.64 |
| 11P      | 39.60      | 43.56 |
| 13P      | 47.52      | 51.48 |
| 15P      | 55.44      | 59.40 |
| 17P      | 63.36      | 67.32 |
| 19P      | 71.28      | 75.24 |

Unit: mm

### A3961WR-XP-A

7.92mm pitch 90° Wafer

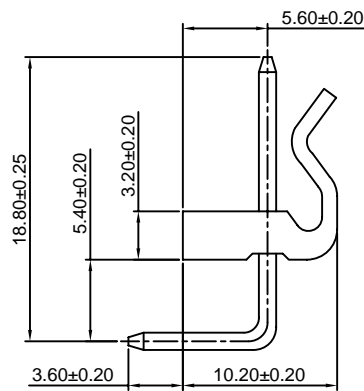
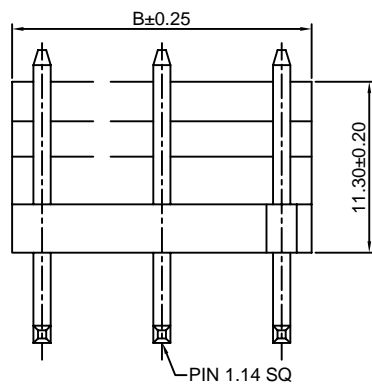
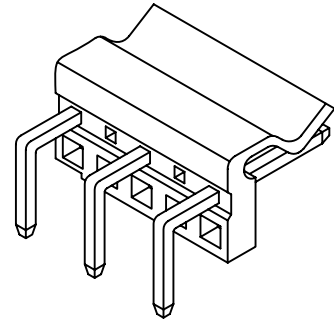
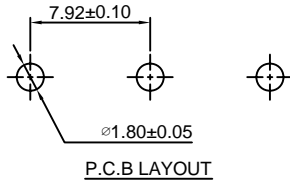
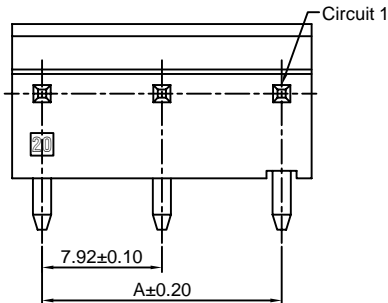
#### Reference Informations:

- \*Material: Pin: Brass/Tin over Nickel  
Insulator: Nylon 66, UL94V-2
- \*Mates with CJT A3961H-XP(-2) or A3964H-XP, A3964H-XP-A, A3964H-XP-C series Housing
- \*Color: Natural

#### Ordering Information:

A3961WR-XP-A - \*\*\* - \*\*  
1 2 3

1. Part No.
2. Material:  
(blank): Nylon 66, UL94V-2  
V0: Nylon 66, UL94V-0  
GWT: Nylon 66, UL94V-0, GWT 750°C
3. Finish:  
(blank): Tin over Nickel  
G: Gold over Nickel



#### Ordering Information & Dimensions:

| PART NO. | Dimensions |       |
|----------|------------|-------|
|          | A          | B     |
| 3P       | 7.92       | 11.88 |
| 5P       | 15.84      | 19.80 |
| 7P       | 23.76      | 27.72 |
| 9P       | 31.68      | 35.64 |
| 11P      | 39.60      | 43.56 |
| 13P      | 47.52      | 51.48 |
| 15P      | 55.44      | 59.40 |
| 17P      | 63.36      | 67.32 |
| 19P      | 71.28      | 75.24 |

Unit: mm

### A3961WVA-XP-A

7.92mm pitch 180° Wafer

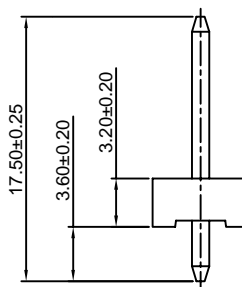
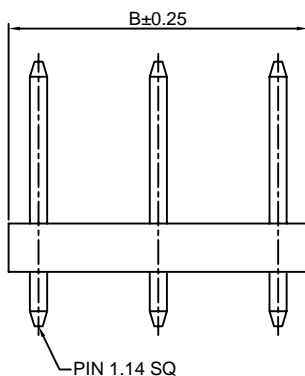
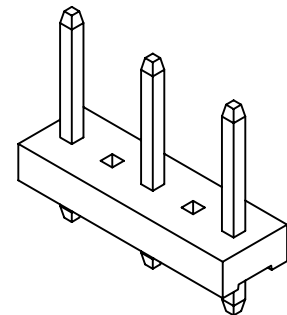
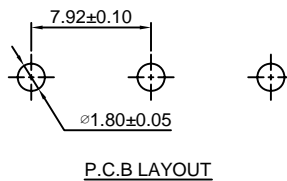
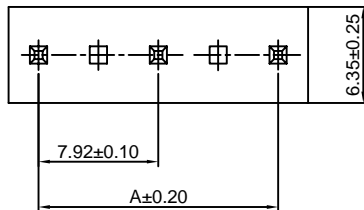
#### Reference Informations:

- \*Material: Pin: Brass/Tin over Nickel  
Insulator: Nylon 66, UL94V-2
- \*Mates with CJT A3961H-XP(-2/-3) or A3964H-XP, A3964H-XP-A, A3964H-XP-B, A3964H-XP-C series Housing
- \*Color: Natural

#### Ordering Information:

A3961WVA-XP-A - \*\*\* - \*\*  
1 2 3

1. Part No.
2. Material:  
(blank): Nylon 66, UL94V-2  
V0: Nylon 66, UL94V-0  
GWT: Nylon 66, UL94V-0, GWT 750°C
3. Finish:  
(blank): Tin over Nickel  
G: Gold over Nickel



#### Ordering Information & Dimensions:

| PART NO. | Dimensions |       |
|----------|------------|-------|
|          | A          | B     |
| 3P       | 7.92       | 11.88 |
| 5P       | 15.84      | 19.80 |
| 7P       | 23.76      | 27.72 |
| 9P       | 31.68      | 35.64 |
| 11P      | 39.60      | 43.56 |
| 13P      | 47.52      | 51.48 |
| 15P      | 55.44      | 59.40 |
| 17P      | 63.36      | 67.32 |
| 19P      | 71.28      | 75.24 |

Unit: mm



### A3961WRA-XP-A

7.92mm pitch 90° Wafer

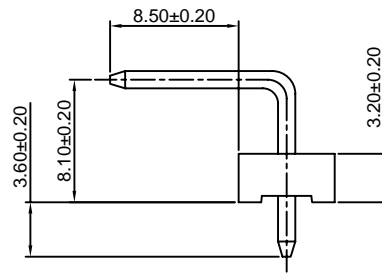
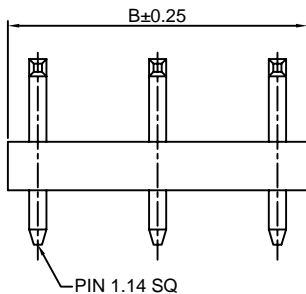
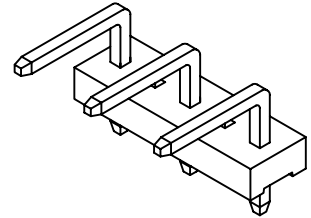
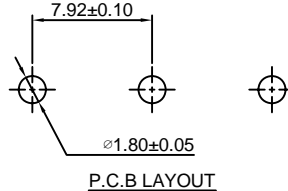
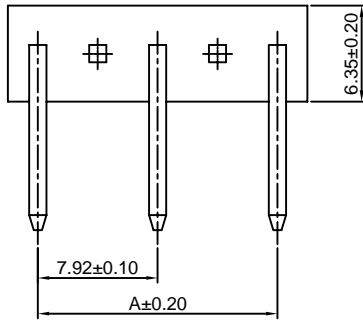
#### Reference Informations:

- \*Material:Pin:Brass/Tin over Nickel  
Insulator:Nylon 66,UL94V-2
- \*Mates with CJT A3961H-XP(-2/-3) or A3964H-XP, A3964H-XP-A,A3964H-XP-B,A3964H-XP-C series Housing
- \*Color:Natural

#### Ordering Information:

A3961WRA-XP-A - \*\*\* - \*\*  
1 2 3

- 1.Part No.
- 2.Material:  
(blank):Nylon 66,UL94V-2  
V0:Nylon 66,UL94V-0  
GWT:Nylon 66,UL94V-0,GWT 750°C
- 3.Finish:  
(blank):Tin over Nickel  
G:Gold over Nickel



#### Ordering Information & Dimensions:

| PART NO. | Dimensions |       |
|----------|------------|-------|
|          | A          | B     |
| 3P       | 7.92       | 11.88 |
| 5P       | 15.84      | 19.80 |
| 7P       | 23.76      | 27.72 |
| 9P       | 31.68      | 35.64 |
| 11P      | 39.60      | 43.56 |
| 13P      | 47.52      | 51.48 |
| 15P      | 55.44      | 59.40 |
| 17P      | 63.36      | 67.32 |
| 19P      | 71.28      | 75.24 |

Unit: mm

### A3961WV-XP-R-A

7.92mm pitch 180° Wafer

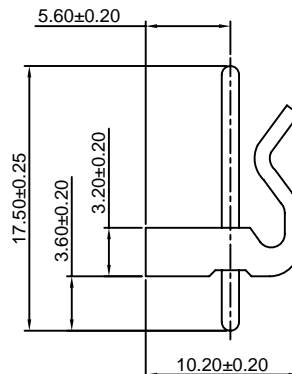
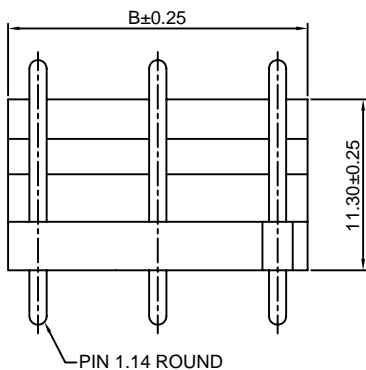
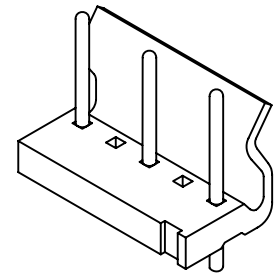
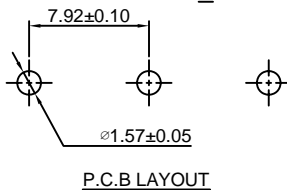
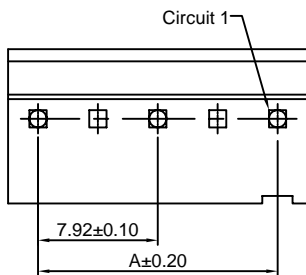
#### Reference Informations:

- \*Material:Pin:Brass/Tin over Nickel  
Insulator:Nylon 66,UL94V-2
- \*Mates with CJT A3961H-XP(-2) or A3964H-XP, A3964H-XP-A,A3964H-XP-C series Housing
- \*Color:Natural

#### Ordering Information:

A3961WV-XP-R-A - \*\*\* - \*\*  
1 2 3

- 1.Part No.
- 2.Material:  
(blank):Nylon 66,UL94V-2  
V0:Nylon 66,UL94V-0  
GWT:Nylon 66,UL94V-0,GWT 750°C
- 3.Finish:  
(blank):Tin over Nickel  
G:Gold over Nickel



#### Ordering Information & Dimensions:

| PART NO. | Dimensions |       |
|----------|------------|-------|
|          | A          | B     |
| 3P       | 7.92       | 11.88 |
| 5P       | 15.84      | 19.80 |
| 7P       | 23.76      | 27.72 |
| 9P       | 31.68      | 35.64 |
| 11P      | 39.60      | 43.56 |
| 13P      | 47.52      | 51.48 |
| 15P      | 55.44      | 59.40 |
| 17P      | 63.36      | 67.32 |
| 19P      | 71.28      | 75.24 |

Unit: mm

### A3961WVA-XP-R-A

7.92mm pitch 180° Wafer

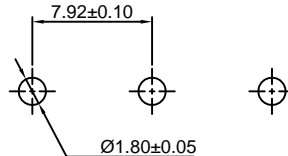
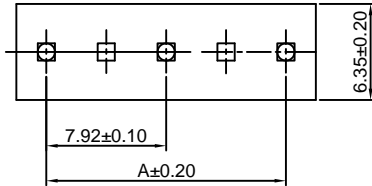
#### Reference Informations:

- \*Material:Pin:Brass/Tin over Nickel  
Insulator:Nylon 66,UL94V-2
- \*Mates with CJT A3961H-XP-2 or A3964H-XP, A3964H-XP-A,A3964H-XP-C series Housing
- \*Color:Natural

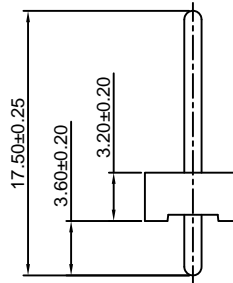
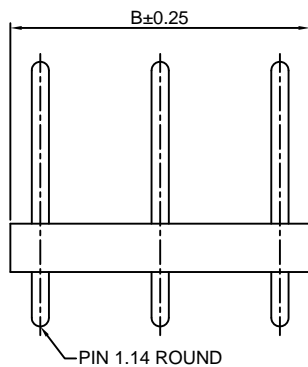
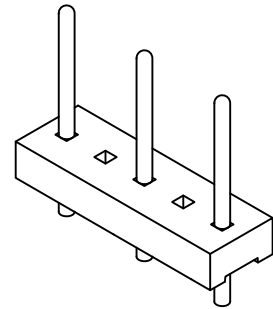
#### Ordering Information:

A3961WVA-XP-R-A - \*\*\* - \*\*  
1 2 3

- 1.Part No.
- 2.Material:  
(blank):Nylon 66,UL94V-2  
V0:Nylon 66,UL94V-0  
GWT:Nylon 66,UL94V-0,GWT 750°C
- 3.Finish:  
(blank):Tin over Nickel  
G:Gold over Nickel



P.C.B LAYOUT



#### Ordering Information & Dimensions:

| PART NO. | Dimensions |       |
|----------|------------|-------|
|          | A          | B     |
| 3P       | 7.92       | 11.88 |
| 5P       | 15.84      | 19.80 |
| 7P       | 23.76      | 27.72 |
| 9P       | 31.68      | 35.64 |
| 11P      | 39.60      | 43.56 |
| 13P      | 47.52      | 51.48 |
| 15P      | 55.44      | 59.40 |
| 17P      | 63.36      | 67.32 |
| 19P      | 71.28      | 75.24 |

Unit: mm

### A3961WVB-XP

3.96mm pitch 180° Wafer

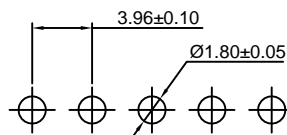
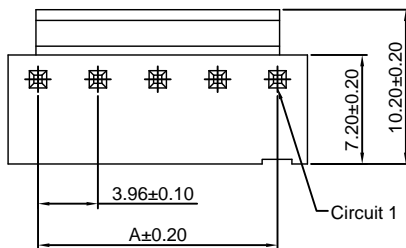
#### Reference Informations:

- \*Material:Pin:Brass/Tin over Nickel  
Insulator:Nylon 66,UL94V-0
- \*Mates with CJT A3961H-XP(-2/-3) or A3964H-XP, A3964H-XP-A,A3964H-XP-B,A3964H-XP-C series Housing
- \*Color:White

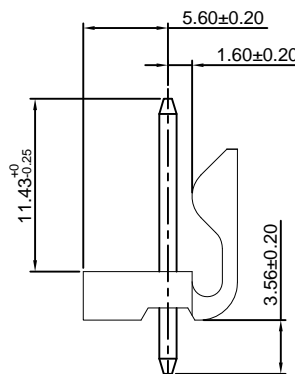
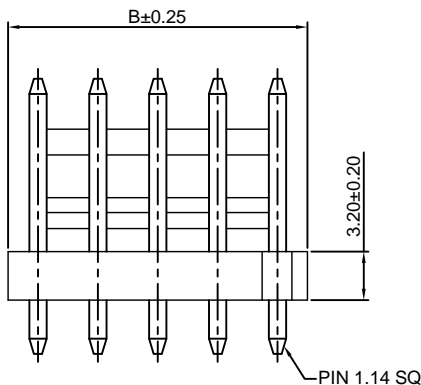
#### Ordering Information:

A3961WVB-XP - \*\*\* - \*\*  
1 2 3

- 1.Part No.
- 2.Material:  
(blank):Nylon 66,UL94V-0  
GWT:Nylon 66,UL94V-0,GWT 750°C
- 3.Finish:  
(blank):Tin over Nickel  
G:Gold over Nickel



P.C.B LAYOUT



#### Ordering Information & Dimensions:

| PART NO. | Dimensions |       |
|----------|------------|-------|
|          | A          | B     |
| 2P       | 3.96       | 7.92  |
| 3P       | 7.92       | 11.88 |
| 4P       | 11.88      | 15.84 |
| 5P       | 15.84      | 19.80 |
| 6P       | 19.80      | 23.76 |
| 7P       | 23.76      | 27.72 |
| 8P       | 27.72      | 31.68 |
| 9P       | 31.68      | 35.64 |
| 10P      | 35.64      | 39.60 |
| 11P      | 39.60      | 43.56 |
| 12P      | 43.56      | 47.52 |
| 13P      | 47.52      | 51.48 |
| 14P      | 51.48      | 55.44 |
| 15P      | 55.44      | 59.40 |
| 16P      | 59.40      | 63.36 |
| 17P      | 63.36      | 67.32 |
| 18P      | 67.32      | 71.28 |
| 19P      | 71.28      | 75.24 |
| 20P      | 75.24      | 79.20 |

Unit: mm

### A3961WVB-F-XP

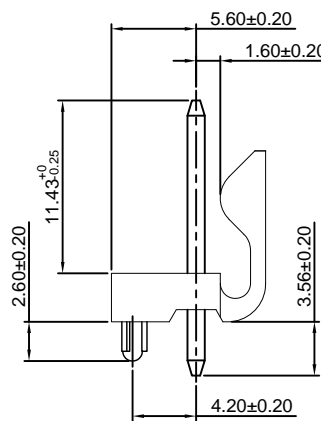
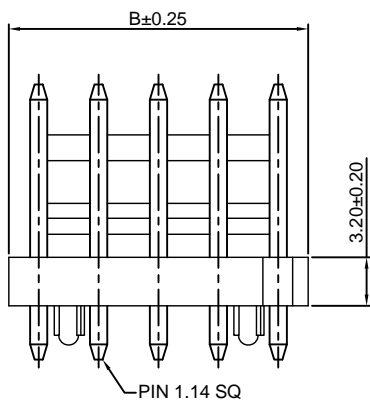
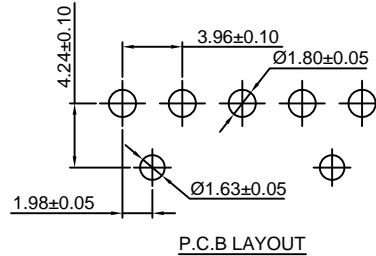
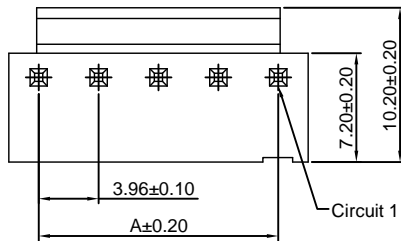
3.96mm pitch 180° Wafer

#### Reference Informations:

- \*Material: Pin: Brass/Tin over Nickel  
Insulator: Nylon 66, UL94V-0
- \*Mates with CJT A3961H-XP(-2/-3) or A3964H-XP, A3964H-XP-A, A3964H-XP-B, A3964H-XP-C series Housing
- \*Color: White

#### Ordering Information:

- A3961WVB-F-XP - \*\*\* - \*\*
- |   |   |   |
|---|---|---|
| 1 | 2 | 3 |
|---|---|---|
- Part No.
  - Material:  
(blank): Nylon 66, UL94V-0  
GWT: Nylon 66, UL94V-0, GWT 750°C
  - Finish:  
(blank): Tin over Nickel  
G: Gold over Nickel



#### Ordering Information & Dimensions:

| PART NO. | Dimensions |       |
|----------|------------|-------|
|          | A          | B     |
| 2P       | 3.96       | 7.92  |
| 3P       | 7.92       | 11.88 |
| 4P       | 11.88      | 15.84 |
| 5P       | 15.84      | 19.80 |
| 6P       | 19.80      | 23.76 |
| 7P       | 23.76      | 27.72 |
| 8P       | 27.72      | 31.68 |
| 9P       | 31.68      | 35.64 |
| 10P      | 35.64      | 39.60 |
| 11P      | 39.60      | 43.56 |
| 12P      | 43.56      | 47.52 |
| 13P      | 47.52      | 51.48 |
| 14P      | 51.48      | 55.44 |
| 15P      | 55.44      | 59.40 |
| 16P      | 59.40      | 63.36 |
| 17P      | 63.36      | 67.32 |
| 18P      | 67.32      | 71.28 |
| 19P      | 71.28      | 75.24 |
| 20P      | 75.24      | 79.20 |

Unit: mm

### A3961WRB-XP

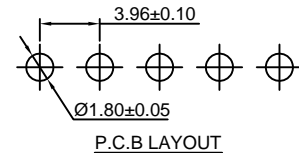
3.96mm pitch 90° Wafer

#### Reference Informations:

- \*Material: Pin: Brass/Tin over Nickel  
Insulator: Nylon 66, UL94V-0
- \*Mates with CJT A3961H-XP(-2/-3) or A3964H-XP, A3964H-XP-A, A3964H-XP-B, A3964H-XP-C series Housing
- \*Color: White

#### Ordering Information:

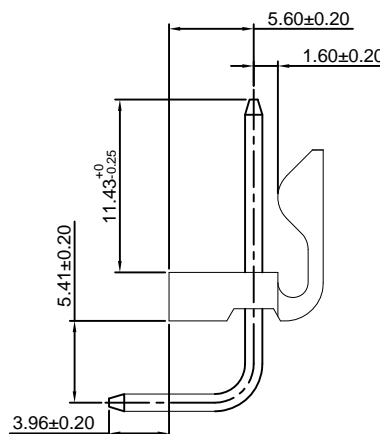
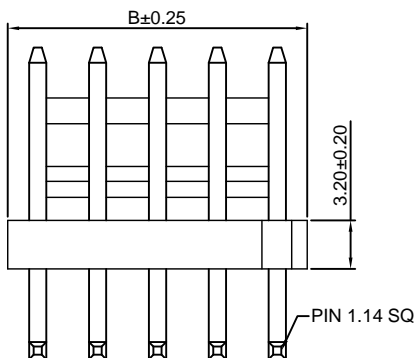
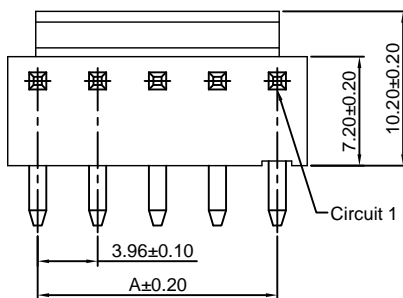
- A3961WRB-XP - \*\*\* - \*\* - \*\*
- |   |   |   |   |
|---|---|---|---|
| 1 | 2 | 3 | 4 |
|---|---|---|---|
- Part No.
  - Material:  
(blank): Nylon 66, UL94V-0  
GWT: Nylon 66, UL94V-0, GWT 750°C
  - Color:  
(blank): White  
BK: Black
  - Finish:  
(blank): Tin over Nickel  
G: Gold over Nickel



#### Ordering Information & Dimensions:

| PART NO. | Dimensions |       |
|----------|------------|-------|
|          | A          | B     |
| 2P       | 3.96       | 7.92  |
| 3P       | 7.92       | 11.88 |
| 4P       | 11.88      | 15.84 |
| 5P       | 15.84      | 19.80 |
| 6P       | 19.80      | 23.76 |
| 7P       | 23.76      | 27.72 |
| 8P       | 27.72      | 31.68 |
| 9P       | 31.68      | 35.64 |
| 10P      | 35.64      | 39.60 |
| 11P      | 39.60      | 43.56 |
| 12P      | 43.56      | 47.52 |
| 13P      | 47.52      | 51.48 |
| 14P      | 51.48      | 55.44 |
| 15P      | 55.44      | 59.40 |
| 16P      | 59.40      | 63.36 |
| 17P      | 63.36      | 67.32 |
| 18P      | 67.32      | 71.28 |
| 19P      | 71.28      | 75.24 |
| 20P      | 75.24      | 79.20 |
| 21P      | 79.20      | 83.16 |
| 22P      | 83.16      | 87.12 |
| 23P      | 87.12      | 91.08 |
| 24P      | 91.08      | 95.04 |

Unit: mm



### A3961WRB-F-XP

3.96mm pitch 90° Wafer

#### Reference Informations:

\*Material: Pin: Brass/Tin over Nickel  
Insulator: Nylon 66, UL94V-0

\*Mates with CJT A3961H-XP(-2/-3) or A3964H-XP, A3964H-XP-A, A3964H-XP-B, A3964H-XP-C series Housing

\*Color: White

#### Ordering Information:

A3961WRB-F-XP - \*\*\* - \*\*  
1 2 3

1. Part No.

2. Material:

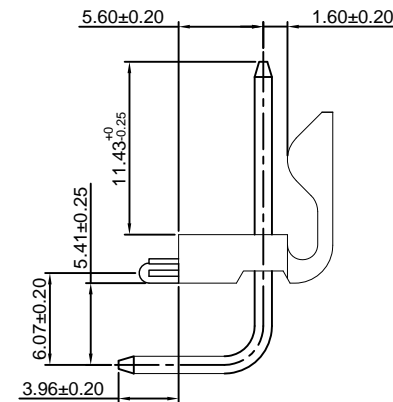
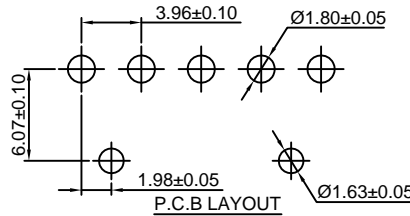
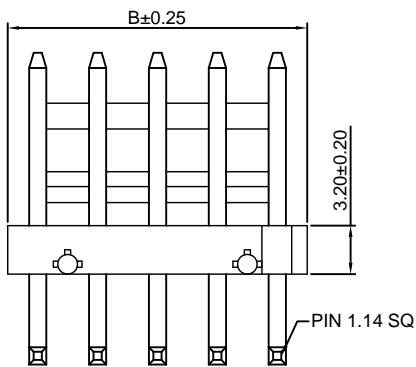
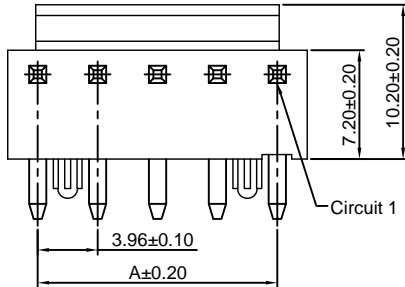
(blank): Nylon 66, UL94V-0

GWT: Nylon 66, UL94V-0, GWT 750°C

3. Finish:

(blank): Tin over Nickel

G: Gold over Nickel



#### Ordering Information & Dimensions:

| PART NO. | Dimensions |       |
|----------|------------|-------|
|          | A          | B     |
| 2P       | 3.96       | 7.92  |
| 3P       | 7.92       | 11.88 |
| 4P       | 11.88      | 15.84 |
| 5P       | 15.84      | 19.80 |
| 6P       | 19.80      | 23.76 |
| 7P       | 23.76      | 27.72 |
| 8P       | 27.72      | 31.68 |
| 9P       | 31.68      | 35.64 |
| 10P      | 35.64      | 39.60 |
| 11P      | 39.60      | 43.56 |
| 12P      | 43.56      | 47.52 |
| 13P      | 47.52      | 51.48 |
| 14P      | 51.48      | 55.44 |
| 15P      | 55.44      | 59.40 |
| 16P      | 59.40      | 63.36 |
| 17P      | 63.36      | 67.32 |
| 18P      | 67.32      | 71.28 |
| 19P      | 71.28      | 75.24 |
| 20P      | 75.24      | 79.20 |
| 21P      | 79.20      | 83.16 |
| 22P      | 83.16      | 87.12 |
| 23P      | 87.12      | 91.08 |
| 24P      | 91.08      | 95.04 |

Unit: mm

### A3961WRB-F-L-XP

3.96mm pitch 90° Wafer

#### Reference Informations:

\*Material: Pin: Brass/Tin over Nickel  
Insulator: Nylon 66, UL94V-0

\*Mates with CJT A3961H-XP(-2/-3) or A3964H-XP, A3964H-XP-A, A3964H-XP-B, A3964H-XP-C series Housing

\*Color: White

#### Ordering Information:

A3961WRB-F-L-XP - \*\*\* - \*\*  
1 2 3

1. Part No.

2. Material:

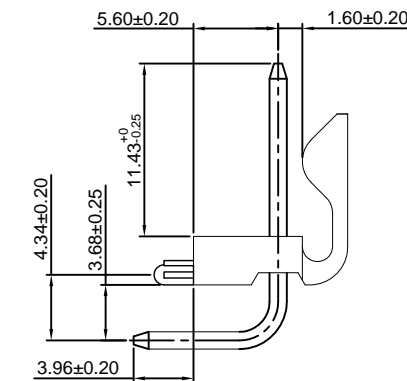
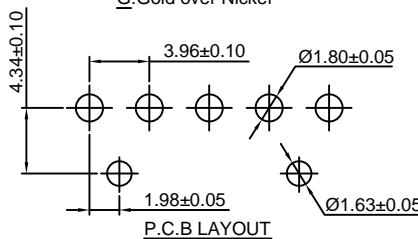
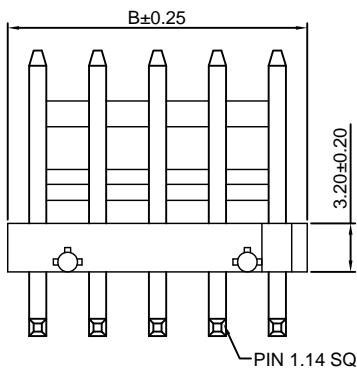
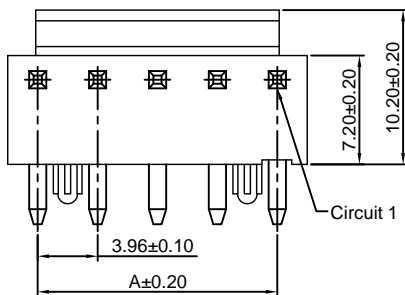
(blank): Nylon 66, UL94V-0

GWT: Nylon 66, UL94V-0, GWT 750°C

3. Finish:

(blank): Tin over Nickel

G: Gold over Nickel



#### Ordering Information & Dimensions:

| PART NO. | Dimensions |       |
|----------|------------|-------|
|          | A          | B     |
| 2P       | 3.96       | 7.92  |
| 3P       | 7.92       | 11.88 |
| 4P       | 11.88      | 15.84 |
| 5P       | 15.84      | 19.80 |
| 6P       | 19.80      | 23.76 |
| 7P       | 23.76      | 27.72 |
| 8P       | 27.72      | 31.68 |
| 9P       | 31.68      | 35.64 |
| 10P      | 35.64      | 39.60 |
| 11P      | 39.60      | 43.56 |
| 12P      | 43.56      | 47.52 |
| 13P      | 47.52      | 51.48 |
| 14P      | 51.48      | 55.44 |
| 15P      | 55.44      | 59.40 |
| 16P      | 59.40      | 63.36 |
| 17P      | 63.36      | 67.32 |
| 18P      | 67.32      | 71.28 |
| 19P      | 71.28      | 75.24 |
| 20P      | 75.24      | 79.20 |
| 21P      | 79.20      | 83.16 |
| 22P      | 83.16      | 87.12 |
| 23P      | 87.12      | 91.08 |
| 24P      | 91.08      | 95.04 |

Unit: mm

### A3961WVC-XP

3.96mm pitch 180° Wafer

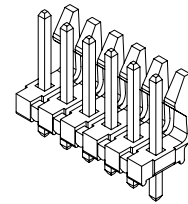
#### Reference Informations:

- \*Material: Pin: Brass/Tin over Nickel  
Insulator: Nylon 66, UL94V-0
- \*Mates with CJT A3961H-XP(-2) or A3964H-XP, A3964H-XP-A, A3964H-XP-C series Housing
- \*Color: Black

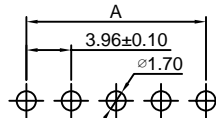
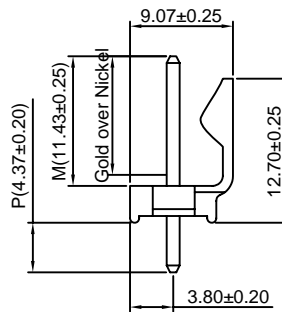
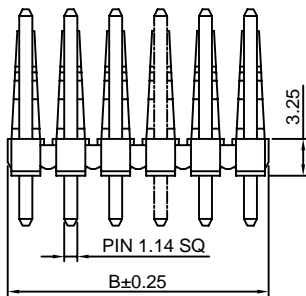
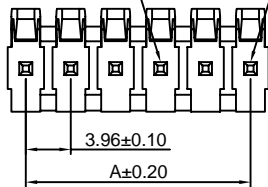
#### Ordering Information:

A3961WVC-XP - \*\*\* - \*\*\* - \*\*\*  
1 2 3 4

- Part No.
- Material:  
(blank): Nylon 66, UL94V-0  
V2: Nylon 66, UL94V-2  
GWT: Nylon 66, UL94V-0, GWT 750°C
- Finish  
(blank): Tin over Nickel  
G: Gold over Nickel (1u")  
G15: Gold over Nickel (15u")  
G20: Gold over Nickel (20u")  
G30: Gold over Nickel (30u")
- Size (P, M): See ①



Optional Voided CKT Circuit 1



P.C.B LAYOUT

Note: ①

| PART NO. | P(mm) | M(mm) | PART NO. | P(mm) | M(mm) |
|----------|-------|-------|----------|-------|-------|
| P44M114  | 4.37  | 11.43 | P115M114 | 11.53 | 11.43 |
| P32M114  | 3.18  | 11.43 | P32M133  | 3.18  | 13.28 |
| P25M133  | 2.51  | 13.28 | P74M114  | 7.42  | 11.43 |
| P44M122  | 4.37  | 12.19 | P123M122 | 12.34 | 12.19 |

#### Ordering Information & Dimensions:

| PART NO. | Dimensions |       |
|----------|------------|-------|
|          | A          | B     |
| 2P       | 3.96       | 7.16  |
| 3P       | 7.92       | 11.12 |
| 4P       | 11.88      | 15.08 |
| 5P       | 15.84      | 19.04 |
| 6P       | 19.80      | 23.00 |
| 7P       | 23.76      | 26.96 |
| 8P       | 27.72      | 30.92 |
| 9P       | 31.68      | 34.88 |
| 10P      | 35.64      | 38.84 |
| 11P      | 39.60      | 42.80 |
| 12P      | 43.56      | 46.76 |
| 13P      | 47.52      | 50.72 |
| 14P      | 51.48      | 54.68 |
| 15P      | 55.44      | 58.64 |
| 16P      | 59.40      | 62.60 |
| 17P      | 63.36      | 66.56 |
| 18P      | 67.32      | 70.52 |
| 19P      | 71.28      | 74.48 |
| 20P      | 75.24      | 78.44 |
| 21P      | 79.20      | 82.40 |
| 22P      | 83.16      | 86.36 |
| 23P      | 87.12      | 90.32 |
| 24P      | 91.08      | 94.28 |

Unit: mm

### A3961WRC-XP

3.96mm pitch 90° Wafer

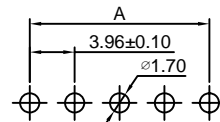
#### Reference Informations:

- \*Material: Pin: Brass/Tin over Nickel  
Insulator: Nylon 66, UL94V-0
- \*Mates with CJT A3961H-XP(-2) or A3964H-XP, A3964H-XP-A, A3964H-XP-C series Housing
- \*Color: Black

#### Ordering Information:

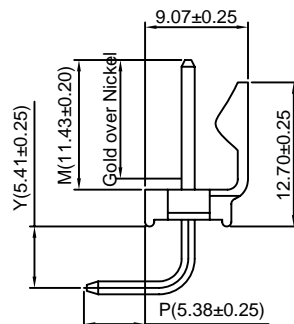
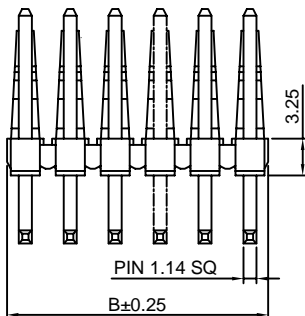
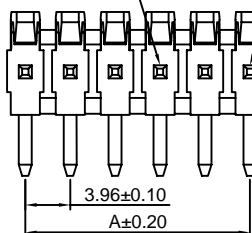
A3961WRC-XP - \*\*\* - \*\*\* - \*\*\*  
1 2 3 4

- Part No.
- Material:  
(blank): Nylon 66, UL94V-0  
V2: Nylon 66, UL94V-2  
GWT: Nylon 66, UL94V-0, GWT 750°C
- Finish  
(blank): Tin over Nickel  
G: Gold over Nickel (1u")  
G15: Gold over Nickel (15u")  
G20: Gold over Nickel (20u")  
G30: Gold over Nickel (30u")
- Size (P, M, Y): See ①



P.C.B LAYOUT

Optional Voided CKT Circuit 1



Note: ①

| PART NO.    | P(mm) | M(mm) | Y(mm) | PART NO.   | P(mm) | M(mm) | Y(mm) |
|-------------|-------|-------|-------|------------|-------|-------|-------|
| P54M114Y54  | 5.38  | 11.43 | 5.41  | P35M114Y56 | 3.45  | 11.43 | 5.61  |
| P35M133Y54  | 3.45  | 13.28 | 5.41  | P35M114Y54 | 3.45  | 11.43 | 5.41  |
| P54M133Y55  | 5.38  | 13.28 | 5.51  | P47M114Y54 | 4.69  | 11.43 | 5.41  |
| P150M127Y54 | 15.04 | 12.67 | 5.41  |            |       |       |       |

#### Ordering Information & Dimensions:

| PART NO. | Dimensions |       |
|----------|------------|-------|
|          | A          | B     |
| 2P       | 3.96       | 7.16  |
| 3P       | 7.92       | 11.12 |
| 4P       | 11.88      | 15.08 |
| 5P       | 15.84      | 19.04 |
| 6P       | 19.80      | 23.00 |
| 7P       | 23.76      | 26.96 |
| 8P       | 27.72      | 30.92 |
| 9P       | 31.68      | 34.88 |
| 10P      | 35.64      | 38.84 |
| 11P      | 39.60      | 42.80 |
| 12P      | 43.56      | 46.76 |
| 13P      | 47.52      | 50.72 |
| 14P      | 51.48      | 54.68 |
| 15P      | 55.44      | 58.64 |
| 16P      | 59.40      | 62.60 |
| 17P      | 63.36      | 66.56 |
| 18P      | 67.32      | 70.52 |
| 19P      | 71.28      | 74.48 |
| 20P      | 75.24      | 78.44 |
| 21P      | 79.20      | 82.40 |
| 22P      | 83.16      | 86.36 |
| 23P      | 87.12      | 90.32 |
| 24P      | 91.08      | 94.28 |

Unit: mm

## X-ON Electronics

Largest Supplier of Electrical and Electronic Components

*Click to view similar products for [Headers & Wire Housings](#) category:*

*Click to view products by [Changjiang](#) manufacturer:*

Other Similar products are found below :

[95000-104TRLF](#) [10135584-644402LF](#) [DF62W-EP2022PCA](#) [95000-106TRLF](#) [DF62W-2022SCA](#) [DF62W-EP2022PC](#) [2203348](#) [DF62W-2022SC](#) [1084018](#) [1029039](#) [1084017](#) [802-10-012-10-002000](#) [1112640](#) [1112639](#) [891-007-9SS-BST1T](#) [000-34000](#) [0008550134](#) [0009482033](#) [0009507031](#) [57102-F02-18ULF](#) [57102-S06-03LF](#) [57202-S52-04LF](#) [PCN6-15S-2.5E](#) [0039019024](#) [58102-G61-06LF](#) [582553-1](#) [0009485154](#) [0009508121](#) [0022285053](#) [0050291907](#) [018731A](#) [LY20-4P-DT1-P1E-BR](#) [02.125.8002.8](#) [60101931](#) [60598-1 \(Cut Strip\)](#) [M1625-3R/100](#) [61062-3](#) [61082-181009](#) [CSU011177004](#) [636-1427](#) [638009-1](#) [641938-9](#) [641991-4](#) [644168-1](#) [644827-2](#) [647662-1](#) [65039-019ELF](#) [65692-001LF](#) [65781-018](#) [65781-047](#)