

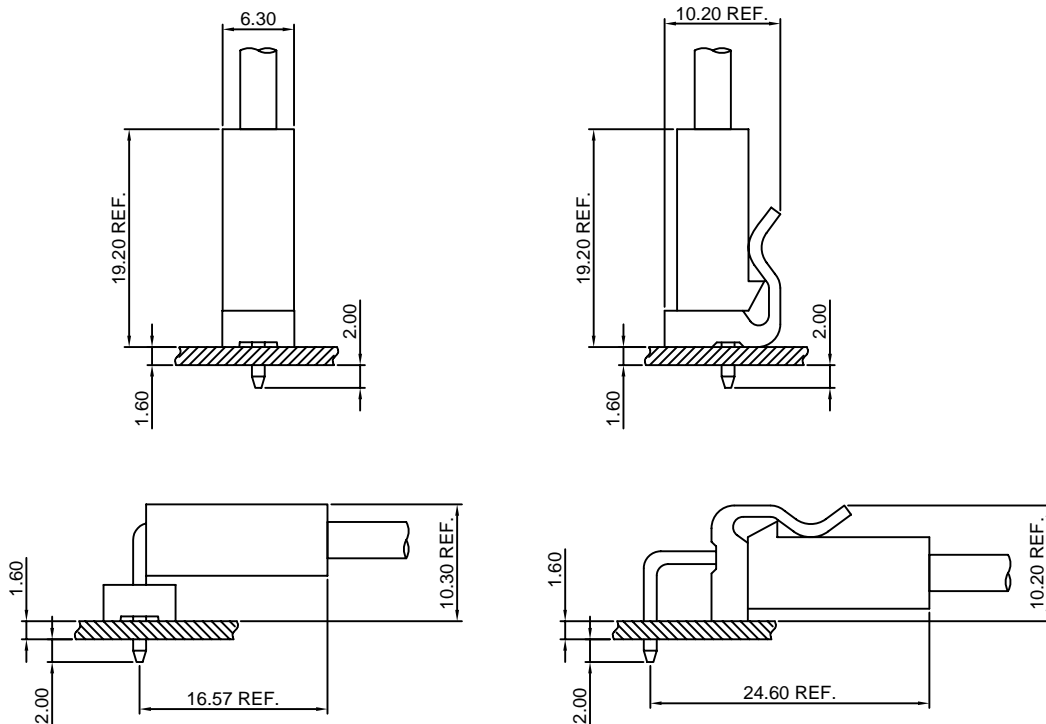
Specifications

- Current rating:7A AC,DC
- Voltage rating:250V AC,DC
- Temperature range:-40°C~+105°C
- Contact resistance:10mΩMax.
- Insulation resistance:1000MΩMin.
- Withstanding voltage:1500V AC/minute
- *Compliant with RoHS and REACH*
- *Meet the HF/Halogen Free,GWT/Glow wire Test (IEC60335-1) request,need to customize*
- *Contact CJT for details*

Standards



Assembly layout

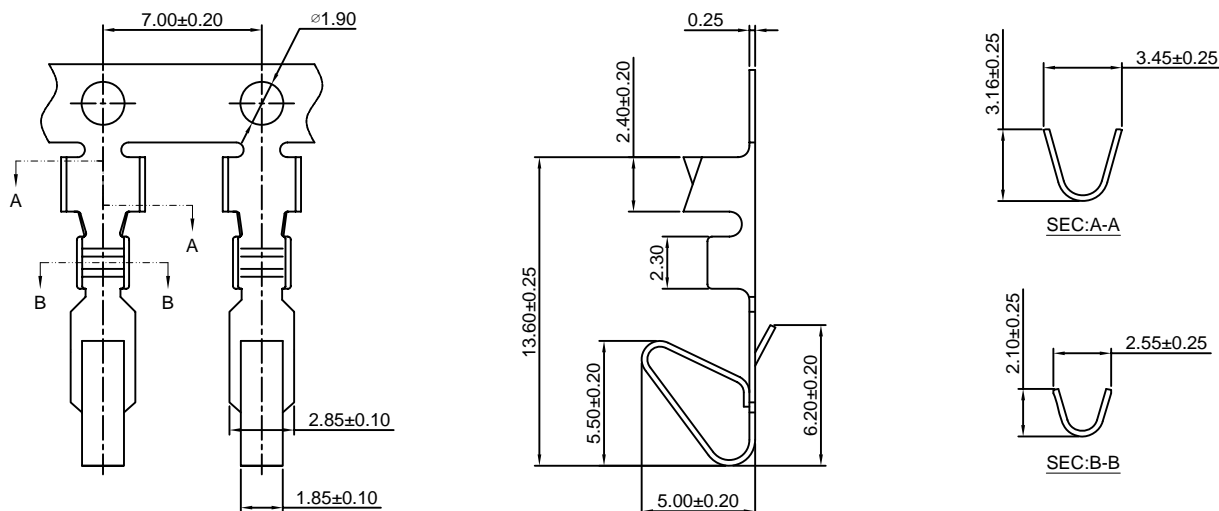


A3961-T

3.96mm pitch Crimp Terminal

Reference Informations:

*Used in CJT A3961H-XP,A3961H-XP-2,A3961H-XP-3, A5081H-XP series Housing



Ordering information & Specifications:

Unit:mm

Part NO.	Wire Range	Insulation O.D.	Material	Finish	Qty/reel
A3961-TB	AWG#18-#24	2.80mm(max)	Brass	Tin over Nickel	6,000 PCS
A3961-TP	AWG#18-#24	2.80mm(max)	Phosphor Bronze	Tin over Nickel	6,000 PCS
A3961-GB	AWG#18-#24	2.80mm(max)	Brass	Gold over Nickel	6,000 PCS
A3961-GP	AWG#18-#24	2.80mm(max)	Phosphor Bronze	Gold over Nickel	6,000 PCS

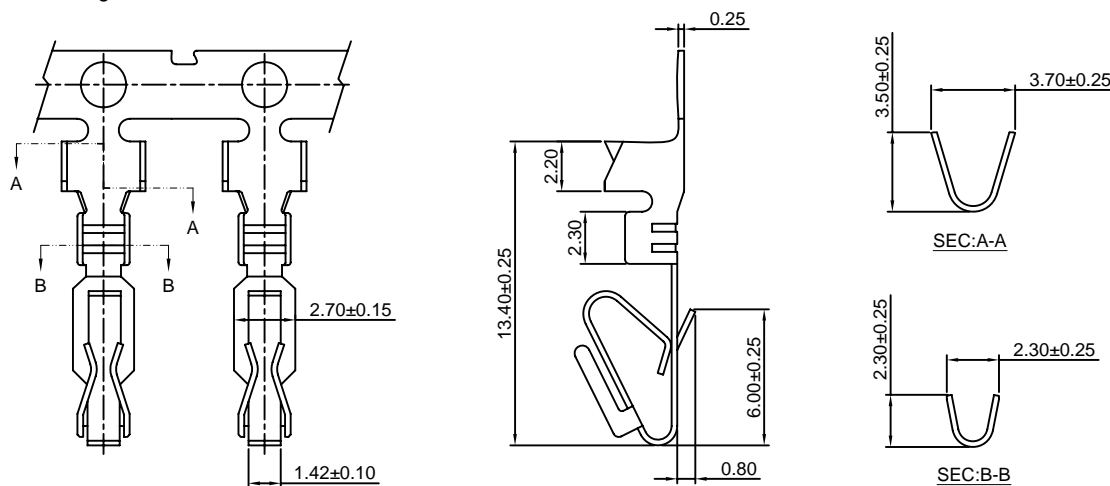
Optional Gold plating available but MOQ requested

A3961-T-1

3.96mm pitch Crimp Terminal

Reference Informations:

*Used in CJT A3961H-XP,A3961H-XP-2,A3961H-XP-3, A5081H-XP series Housing



Ordering information & Specifications:

Unit:mm

Part NO.	Wire Range	Insulation O.D.	Material	Finish	Qty/reel
A3961-TB-1	AWG#18-#24	2.80mm(max)	Brass	Tin over Nickel	6,000 PCS
A3961-TP-1	AWG#18-#24	2.80mm(max)	Phosphor Bronze	Tin over Nickel	6,000 PCS
A3961-GB-1	AWG#18-#24	2.80mm(max)	Brass	Gold over Nickel	6,000 PCS
A3961-GP-1	AWG#18-#24	2.80mm(max)	Phosphor Bronze	Gold over Nickel	6,000 PCS

Optional Gold plating available but MOQ requested

A3961H-XP

3.96mm pitch Housing

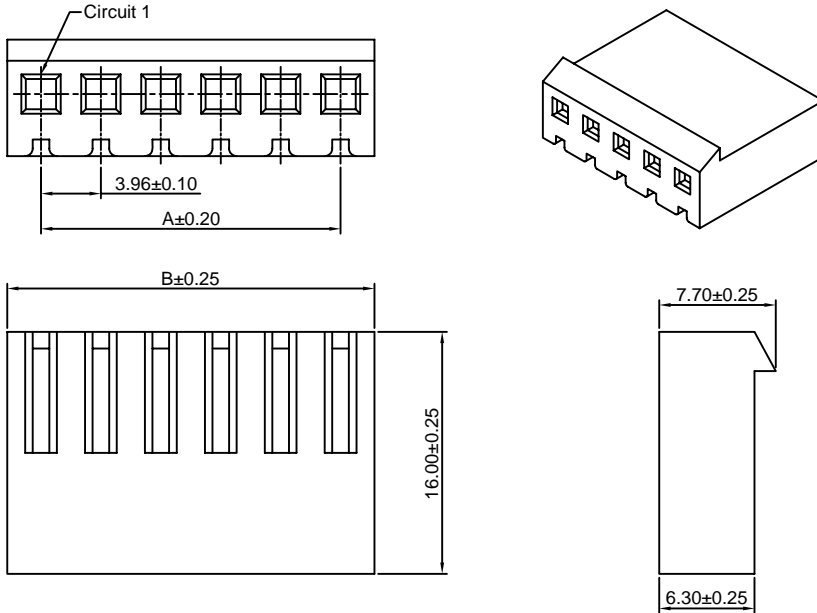
Reference Informations:

- *Material:Nylon 66,UL94V-2
- *Suitable CJT A3961-T(-1) series Terminal
- *Mates with CJT A3961WV,WR,WVA,WRA-XP(-A), A3961WV,WVA-XP-R(-A),A3961WVB-F,WRB-F-XP, A3961WVB,WRB,WVC,WRC-XP series Wafer
- *Color:Natural

Ordering Information:

- A3961H-XP - ***
 1 2
- 1.Part No.
 - 2.Material:
 (blank):Nylon 66,UL94V-2
 V0:Nylon 66,UL94V-0
 GWT:Nylon 66,UL94V-0,GWT 750°C

Ordering Information & Dimensions:



PART NO.	Dimensions	
	A	B
2P	3.96	8.43
3P	7.92	12.39
4P	11.88	16.35
5P	15.84	20.31
6P	19.80	24.27
7P	23.76	28.23
8P	27.72	32.19
9P	31.68	36.15
10P	35.64	40.11
11P	39.60	44.07
12P	43.56	48.03
13P	47.52	51.99
14P	51.48	55.95
15P	55.44	59.91
16P	59.40	63.87
17P	63.36	67.83
18P	67.32	71.79
19P	71.28	75.75
20P	75.24	79.71
21P	79.20	83.67
22P	83.16	87.63
23P	87.12	91.59
24P	91.08	95.55

Unit: mm

A3961H-XP-2

3.96mm pitch Housing

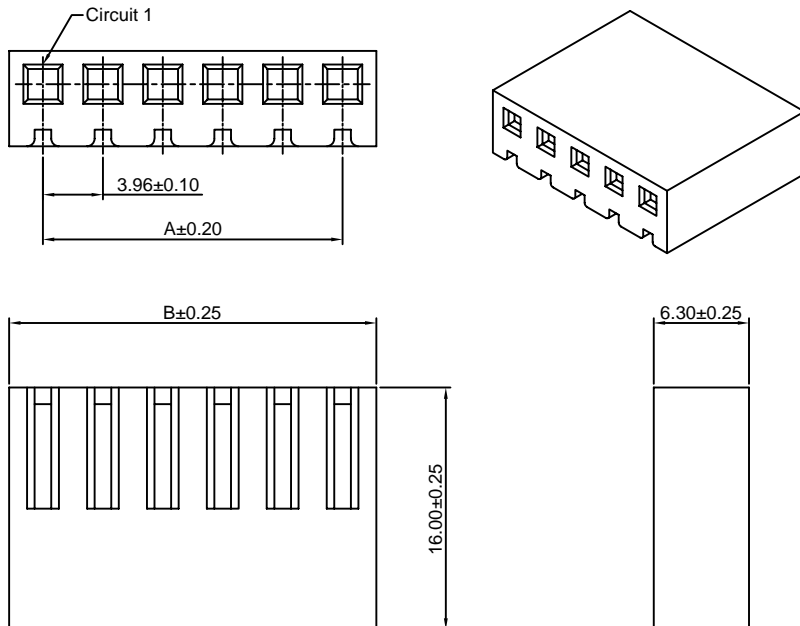
Reference Informations:

- *Material:Nylon 66,UL94V-2
- *Suitable CJT A3961-T(-1) series Terminal
- *Mates with CJT A3961WV,WR,WVA,WRA-XP(-A), A3961WV,WVA-XP-R(-A),A3961WVB-F,WRB-F-XP, A3961WVB,WRB,WVC,WRC-XP series Wafer
- *Color:Natural

Ordering Information:

- A3961H-XP-2 - ***
 1 2
- 1.Part No.
 - 2.Material:
 (blank):Nylon 66,UL94V-2
 V0:Nylon 66,UL94V-0
 GWT:Nylon 66,UL94V-0,GWT 750°C

Ordering Information & Dimensions:



PART NO.	Dimensions	
	A	B
2P	3.96	8.43
3P	7.92	12.39
4P	11.88	16.35
5P	15.84	20.31
6P	19.80	24.27
7P	23.76	28.23
8P	27.72	32.19
9P	31.68	36.15
10P	35.64	40.11
11P	39.60	44.07
12P	43.56	48.03
13P	47.52	51.99
14P	51.48	55.95
15P	55.44	59.91
16P	59.40	63.87
17P	63.36	67.83
18P	67.32	71.79
19P	71.28	75.75
20P	75.24	79.71
21P	79.20	83.67
22P	83.16	87.63
23P	87.12	91.59
24P	91.08	95.55

Unit: mm

A3961H-XP-3-V0

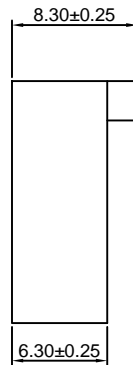
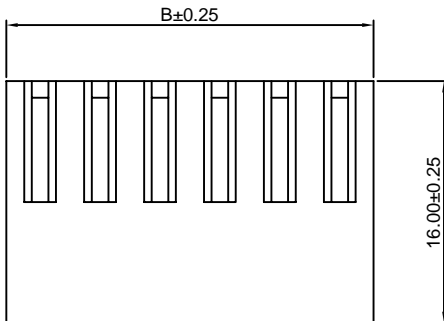
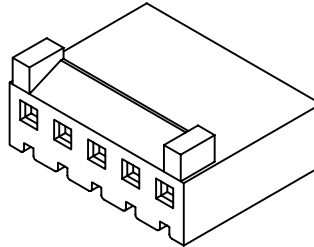
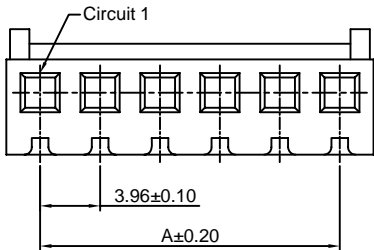
3.96mm pitch Housing

Reference Informations:

- *Material: Nylon 66, UL94V-0
- *Suitable CJT A3961-T(-1) series Terminal
- *Mates with CJT A3961WVA, WRA-XP(-A), A3961WVA-XP-R(-A), A3961WVB-F, WRB-F-XP, A3961WVB, WRB-XP, D3961WV, WR-XP series Wafer
- *Color: Natural

Ordering Information:

- A3961H-XP-3 - ***
 1 2
1. Part No.
 2. Material:
 V0: Nylon 66, UL94V-0
 GWT: Nylon 66, UL94V-0, GWT 750°C



Ordering Information & Dimensions:

PART NO.	Dimensions	
	A	B
2P	3.96	8.43
3P	7.92	12.39
4P	11.88	16.35
5P	15.84	20.31
6P	19.80	24.27
7P	23.76	28.23
8P	27.72	32.19
9P	31.68	36.15
10P	35.64	40.11
11P	39.60	44.07
12P	43.56	48.03
13P	47.52	51.99
14P	51.48	55.95
15P	55.44	59.91
16P	59.40	63.87
17P	63.36	67.83
18P	67.32	71.79
19P	71.28	75.75
20P	75.24	79.71
21P	79.20	83.67
22P	83.16	87.63
23P	87.12	91.59
24P	91.08	95.55

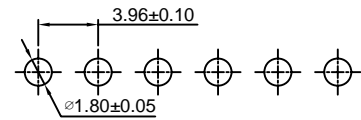
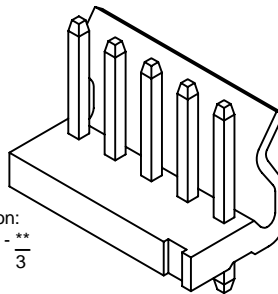
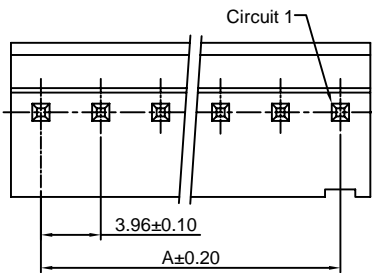
Unit: mm

A3961WV-XP

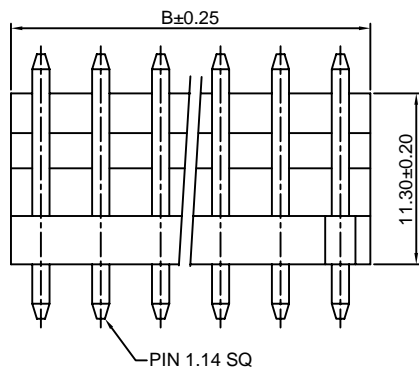
3.96mm pitch 180° Wafer

Reference Informations:

- *Material: Pin: Brass/Tin over Nickel
 Insulator: Nylon 66, UL94V-2
- *Mates with CJT A3961H-XP(-2) or A3964H-XP, A3964H-XP-A, A3964H-XP-C series Housing
- *Color: Natural

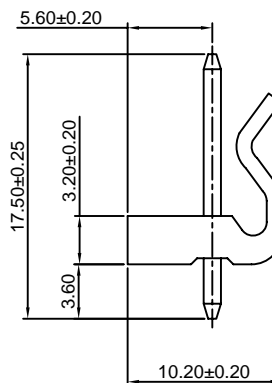


P.C.B LAYOUT



Ordering Information:

- A3961WV-XP - *** - **
 1 2 3
1. Part No.
 2. Material:
 (blank): Nylon 66, UL94V-2
 V0: Nylon 66, UL94V-0
 GWT: Nylon 66, UL94V-0, GWT 750°C
 3. Finish:
 (blank): Tin over Nickel
 G: Gold over Nickel



Ordering Information & Dimensions:

PART NO.	Dimensions	
	A	B
2P	3.96	8.43
3P	7.92	12.39
4P	11.88	16.35
5P	15.84	20.31
6P	19.80	24.27
7P	23.76	28.23
8P	27.72	32.19
9P	31.68	36.15
10P	35.64	40.11
11P	39.60	44.07
12P	43.56	48.03
13P	47.52	51.99
14P	51.48	55.95
15P	55.44	59.91
16P	59.40	63.87
17P	63.36	67.83
18P	67.32	71.79
19P	71.28	75.75
20P	75.24	79.71
21P	79.20	83.67
22P	83.16	87.63
23P	87.12	91.59
24P	91.08	95.55

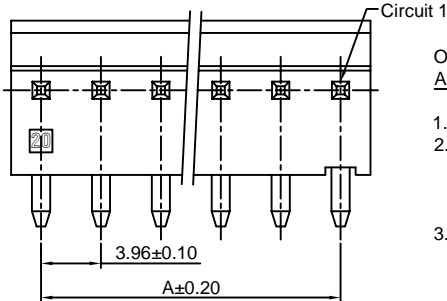
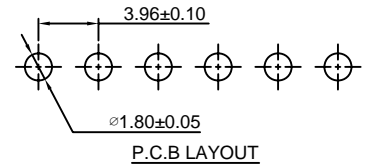
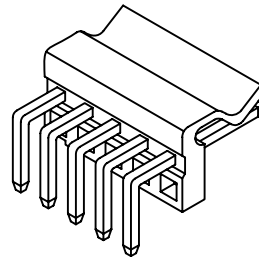
Unit: mm

A3961WR-XP

3.96mm pitch 90° Wafer

Reference Informations:

- *Material: Pin: Brass/Tin over Nickel
Insulator: Nylon 66, UL94V-2
- *Mates with CJT A3961H-XP(-2) or A3964H-XP, A3964H-XP-A, A3964H-XP-C series Housing
- *Color: Natural



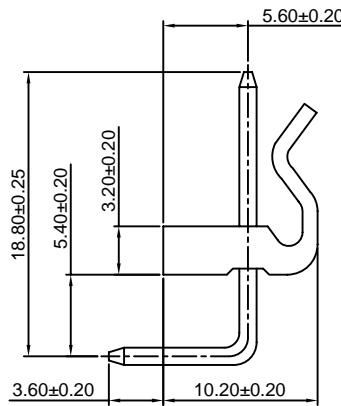
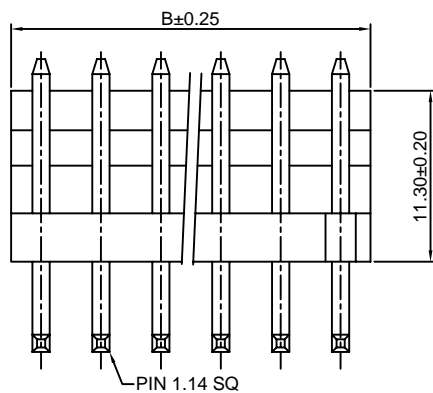
Ordering Information:
A3961WR-XP - *** - **
1 2 3

1. Part No.
2. Material:
(blank): Nylon 66, UL94V-2
V0: Nylon 66, UL94V-0
GWT: Nylon 66, UL94V-0, GWT 750°C
3. Finish:
(blank): Tin over Nickel
G: Gold over Nickel

Ordering Information & Dimensions:

PART NO.	Dimensions	
	A	B
2P	3.96	7.92
3P	7.92	11.88
4P	11.88	15.84
5P	15.84	19.80
6P	19.80	23.76
7P	23.76	27.72
8P	27.72	31.68
9P	31.68	35.64
10P	35.64	39.60
11P	39.60	43.56
12P	43.56	47.52
13P	47.52	51.48
14P	51.48	55.44
15P	55.44	59.40
16P	59.40	63.36
17P	63.36	67.32
18P	67.32	71.28
19P	71.28	75.24
20P	75.24	79.20
21P	79.20	83.16
22P	83.16	87.12
23P	87.12	91.08
24P	91.08	95.04

Unit: mm

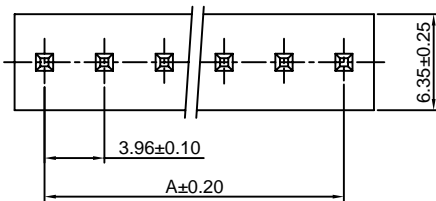
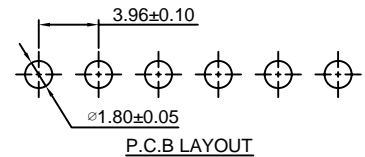
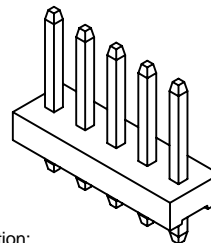


A3961WVA-XP

3.96mm pitch 180° Wafer

Reference Informations:

- *Material: Pin: Brass/Tin over Nickel
Insulator: Nylon 66, UL94V-2
- *Mates with CJT A3961H-XP(-2/-3) or A3964H-XP, A3964H-XP-A, A3964H-XP-B, A3964H-XP-C series Housing
- *Color: Natural



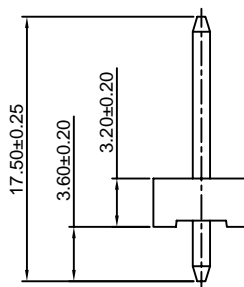
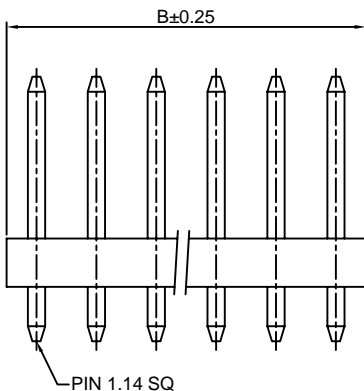
Ordering Information:
A3961WVA-XP - *** - **
1 2 3

1. Part No.
2. Material:
(blank): Nylon 66, UL94V-2
V0: Nylon 66, UL94V-0
GWT: Nylon 66, UL94V-0, GWT 750°C
3. Finish:
(blank): Tin over Nickel
G: Gold over Nickel

Ordering Information & Dimensions:

PART NO.	Dimensions	
	A	B
2P	3.96	7.92
3P	7.92	11.88
4P	11.88	15.84
5P	15.84	19.80
6P	19.80	23.76
7P	23.76	27.72
8P	27.72	31.68
9P	31.68	35.64
10P	35.64	39.60
11P	39.60	43.56
12P	43.56	47.52
13P	47.52	51.48
14P	51.48	55.44
15P	55.44	59.40
16P	59.40	63.36
17P	63.36	67.32
18P	67.32	71.28
19P	71.28	75.24
20P	75.24	79.20
21P	79.20	83.16
22P	83.16	87.12
23P	87.12	91.08
24P	91.08	95.04

Unit: mm



A3961WRA-XP

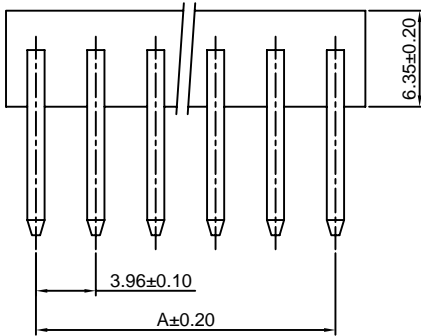
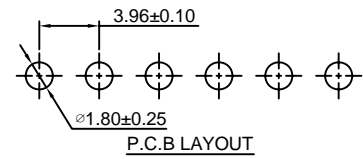
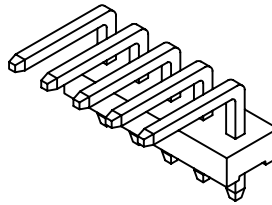
3.96mm pitch 90° Wafer

Reference Informations:

*Material:Pin:Brass/Tin over Nickel
Insulator:Nylon 66,UL94V-2

*Mates with CJT A3961H-XP(-2/-3) or A3964H-XP, A3964H-XP-A,A3964H-XP-B,A3964H-XP-C series Housing

*Color:Natural



Ordering Information:

A3961WRA-XP - *** - **
1 2 3

1.Part No.

2.Material:

(blank):Nylon 66,UL94V-2

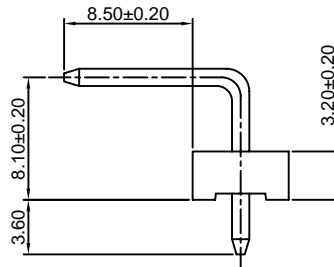
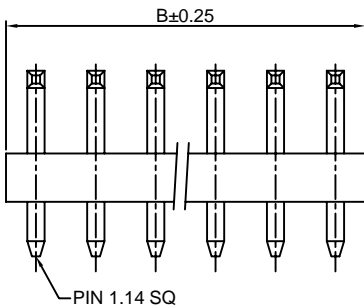
V0:Nylon 66,UL94V-0

GWT:Nylon 66,UL94V-0,GWT 750°C

3.Finish:

(blank):Tin over Nickel

G:Gold over Nickel



Ordering Information & Dimensions:

PART NO.	Dimensions	
	A	B
2P	3.96	7.92
3P	7.92	11.88
4P	11.88	15.84
5P	15.84	19.80
6P	19.80	23.76
7P	23.76	27.72
8P	27.72	31.68
9P	31.68	35.64
10P	35.64	39.60
11P	39.60	43.56
12P	43.56	47.52
13P	47.52	51.48
14P	51.48	55.44
15P	55.44	59.40
16P	59.40	63.36
17P	63.36	67.32
18P	67.32	71.28
19P	71.28	75.24
20P	75.24	79.20
21P	79.20	83.16
22P	83.16	87.12
23P	87.12	91.08
24P	91.08	95.04

Unit: mm

A3961WV-XP-R

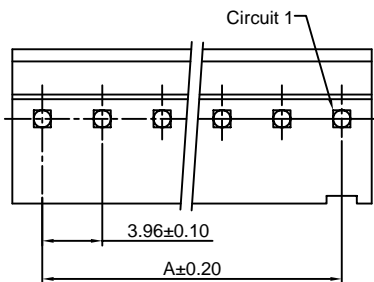
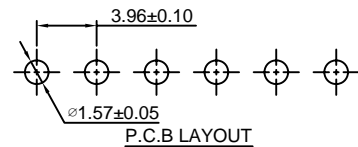
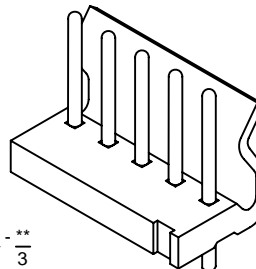
3.96mm pitch 180° Wafer, Round PIN

Reference Informations:

*Material:Pin:Brass/Tin over Nickel
Insulator:Nylon 66,UL94V-2

*Mates with CJT A3961H-XP(-2) or A3964H-XP, A3964H-XP-A,A3964H-XP-C series Housing

*Color:Natural



Ordering Information:

A3961WV-XP-R - *** - **
1 2 3

1.Part No.

2.Material:

(blank):Nylon 66,UL94V-2

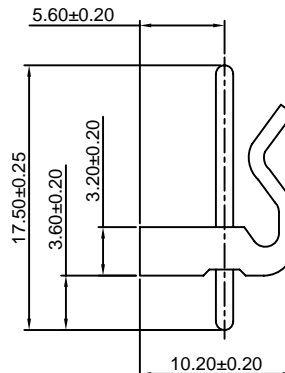
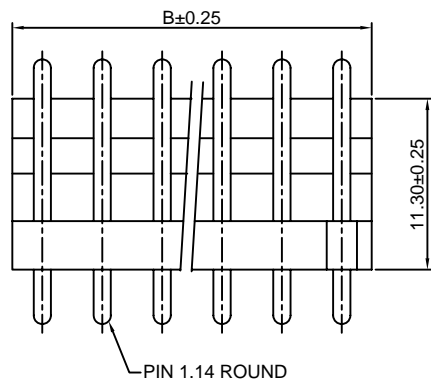
V0:Nylon 66,UL94V-0

GWT:Nylon 66,UL94V-0,GWT 750°C

3.Finish:

(blank):Tin over Nickel

G:Gold over Nickel



Ordering Information & Dimensions:

PART NO.	Dimensions	
	A	B
2P	3.96	7.92
3P	7.92	11.88
4P	11.88	15.84
5P	15.84	19.80
6P	19.80	23.76
7P	23.76	27.72
8P	27.72	31.68
9P	31.68	35.64
10P	35.64	39.60
11P	39.60	43.56
12P	43.56	47.52
13P	47.52	51.48
14P	51.48	55.44
15P	55.44	59.40
16P	59.40	63.36
17P	63.36	67.32
18P	67.32	71.28
19P	71.28	75.24
20P	75.24	79.20
21P	79.20	83.16
22P	83.16	87.12
23P	87.12	91.08
24P	91.08	95.04

Unit: mm

A3961WVA-XP-R

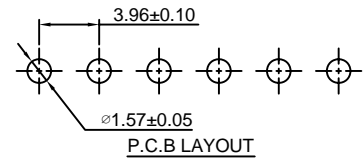
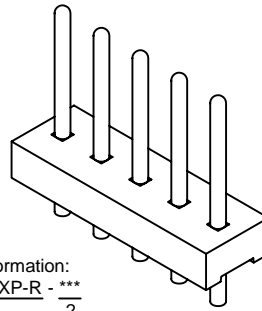
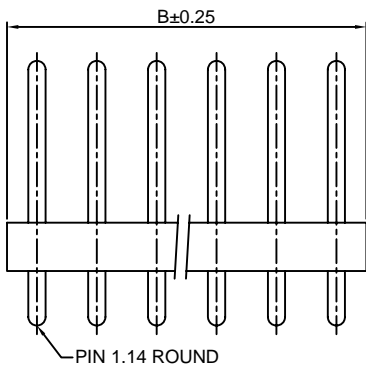
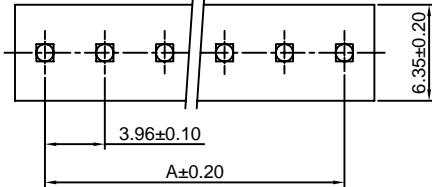
3.96mm pitch 180° Wafer, Round PIN

Reference Informations:

*Material:Pin:Brass/Tin over Nickel
Insulator:Nylon 66,UL94V-2

*Mates with CJT A3961H-XP(-2/-3) or A3964H-XP, A3964H-XP-A,A3964H-XP-B,A3964H-XP-C series Housing

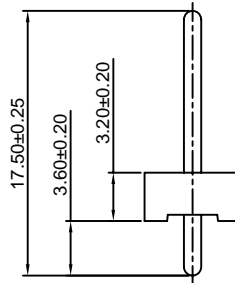
*Color:Natural



Ordering Information:

A3961WVA-XP-R - ***
1 2

- Part No.
- Material:
(blank):Nylon 66,UL94V-2
V0:Nylon 66,UL94V-0
GWT:Nylon 66,UL94V-0,GWT 750°C
- Finish:
(blank):Tin over Nickel
G:Gold over Nickel



Ordering Information & Dimensions:

PART NO.	Dimensions	
	A	B
2P	3.96	7.92
3P	7.92	11.88
4P	11.88	15.84
5P	15.84	19.80
6P	19.80	23.76
7P	23.76	27.72
8P	27.72	31.68
9P	31.68	35.64
10P	35.64	39.60
11P	39.60	43.56
12P	43.56	47.52
13P	47.52	51.48
14P	51.48	55.44
15P	55.44	59.40
16P	59.40	63.36
17P	63.36	67.32
18P	67.32	71.28
19P	71.28	75.24
20P	75.24	79.20
21P	79.20	83.16
22P	83.16	87.12
23P	87.12	91.08
24P	91.08	95.04

Unit: mm

A3961WV-XP-A

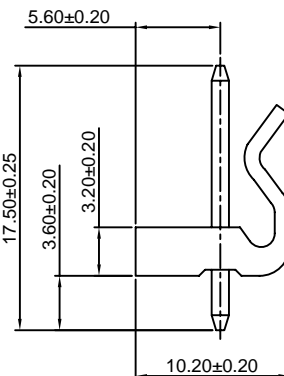
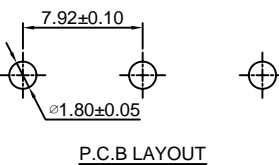
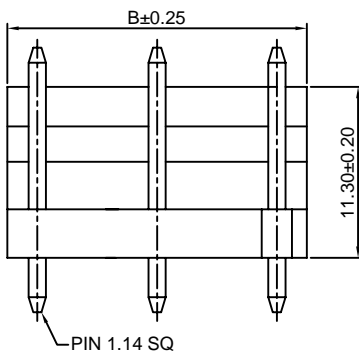
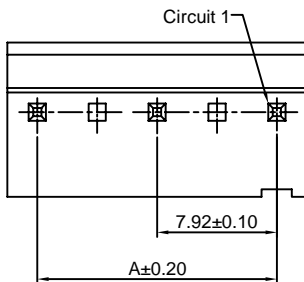
7.92mm pitch 180° Wafer

Reference Informations:

*Material:Pin:Brass/Tin over Nickel
Insulator:Nylon 66,UL94V-2

*Mates with CJT A3961H-XP(-2) or A3964H-XP, A3964H-XP-A,A3964H-XP-C series Housing

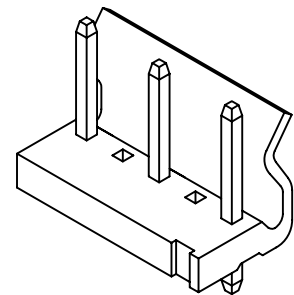
*Color:Natural



Ordering Information:

A3961WV-XP-A - *** - **
1 2 3

- Part No.
- Material:
(blank):Nylon 66,UL94V-2
V0:Nylon 66,UL94V-0
GWT:Nylon 66,UL94V-0,GWT 750°C
- Finish:
(blank):Tin over Nickel
G:Gold over Nickel



Ordering Information & Dimensions:

PART NO.	Dimensions	
	A	B
3P	7.92	11.88
5P	15.84	19.80
7P	23.76	27.72
9P	31.68	35.64
11P	39.60	43.56
13P	47.52	51.48
15P	55.44	59.40
17P	63.36	67.32
19P	71.28	75.24

Unit: mm

A3961WR-XP-A

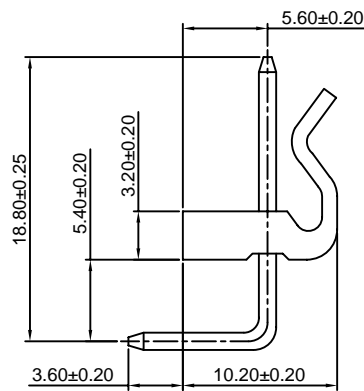
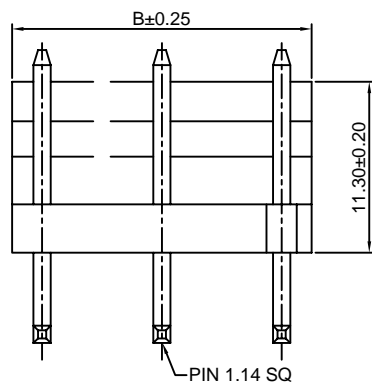
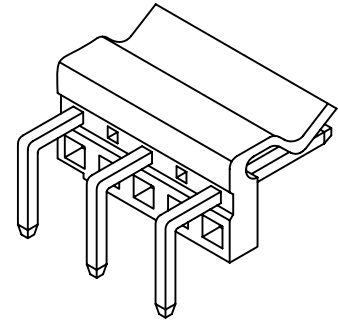
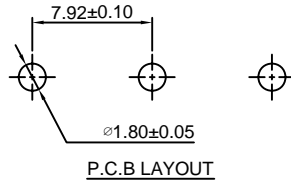
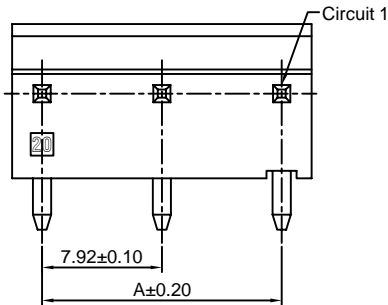
7.92mm pitch 90° Wafer

Reference Informations:

- *Material:Pin:Brass/Tin over Nickel
Insulator:Nylon 66,UL94V-2
- *Mates with CJT A3961H-XP(-2) or A3964H-XP, A3964H-XP-A,A3964H-XP-C series Housing
- *Color:Natural

Ordering Information:

- A3961WR-XP-A - *** - **
1 2 3
- 1.Part No.
 - 2.Material:
(blank):Nylon 66,UL94V-2
V0:Nylon 66,UL94V-0
GWT:Nylon 66,UL94V-0,GWT 750°C
 - 3.Finish:
(blank):Tin over Nickel
G:Gold over Nickel



Ordering Information & Dimensions:

PART NO.	Dimensions	
	A	B
3P	7.92	11.88
5P	15.84	19.80
7P	23.76	27.72
9P	31.68	35.64
11P	39.60	43.56
13P	47.52	51.48
15P	55.44	59.40
17P	63.36	67.32
19P	71.28	75.24

Unit: mm

A3961WVA-XP-A

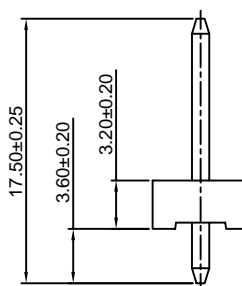
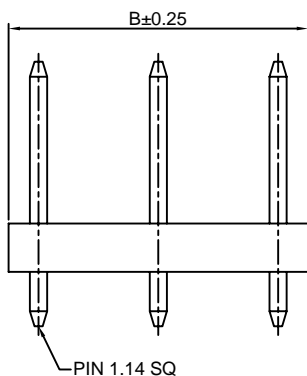
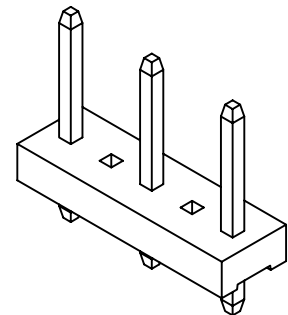
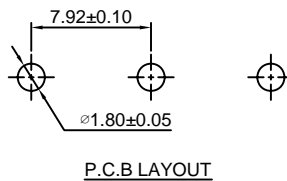
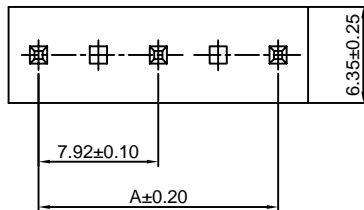
7.92mm pitch 180° Wafer

Reference Informations:

- *Material:Pin:Brass/Tin over Nickel
Insulator:Nylon 66,UL94V-2
- *Mates with CJT A3961H-XP(-2/-3) or A3964H-XP, A3964H-XP-A,A3964H-XP-B,A3964H-XP-C series Housing
- *Color:Natural

Ordering Information:

- A3961WVA-XP-A - *** - **
1 2 3
- 1.Part No.
 - 2.Material:
(blank):Nylon 66,UL94V-2
V0:Nylon 66,UL94V-0
GWT:Nylon 66,UL94V-0,GWT 750°C
 - 3.Finish:
(blank):Tin over Nickel
G:Gold over Nickel



Ordering Information & Dimensions:

PART NO.	Dimensions	
	A	B
3P	7.92	11.88
5P	15.84	19.80
7P	23.76	27.72
9P	31.68	35.64
11P	39.60	43.56
13P	47.52	51.48
15P	55.44	59.40
17P	63.36	67.32
19P	71.28	75.24

Unit: mm

A3961WRA-XP-A

7.92mm pitch 90° Wafer

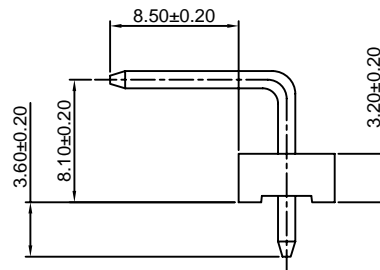
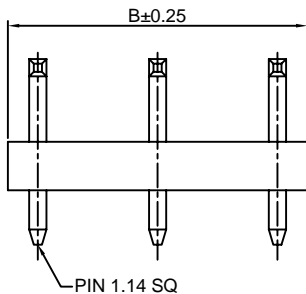
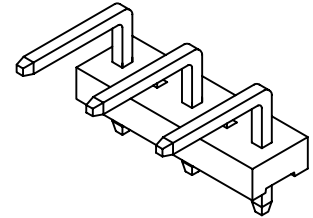
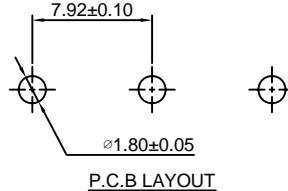
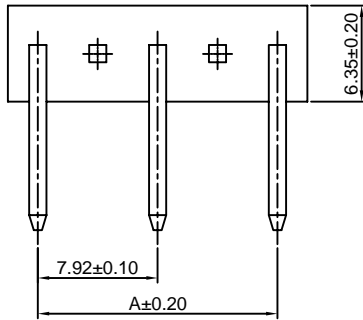
Reference Informations:

- *Material:Pin:Brass/Tin over Nickel
Insulator:Nylon 66,UL94V-2
- *Mates with CJT A3961H-XP(-2/-3) or A3964H-XP, A3964H-XP-A,A3964H-XP-B,A3964H-XP-C series Housing
- *Color:Natural

Ordering Information:

A3961WRA-XP-A - *** - **
1 2 3

- 1.Part No.
- 2.Material:
(blank):Nylon 66,UL94V-2
V0:Nylon 66,UL94V-0
GWT:Nylon 66,UL94V-0,GWT 750°C
- 3.Finish:
(blank):Tin over Nickel
G:Gold over Nickel



Ordering Information & Dimensions:

PART NO.	Dimensions	
	A	B
3P	7.92	11.88
5P	15.84	19.80
7P	23.76	27.72
9P	31.68	35.64
11P	39.60	43.56
13P	47.52	51.48
15P	55.44	59.40
17P	63.36	67.32
19P	71.28	75.24

Unit: mm

A3961WV-XP-R-A

7.92mm pitch 180° Wafer

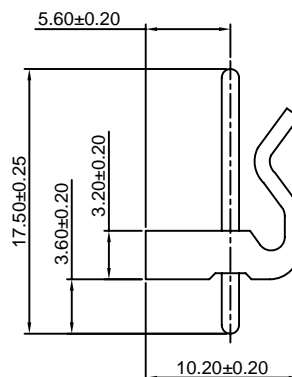
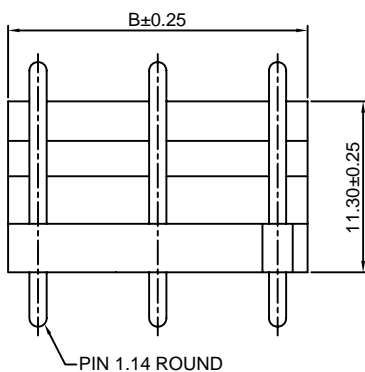
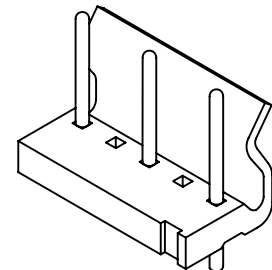
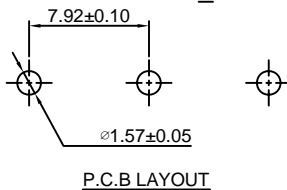
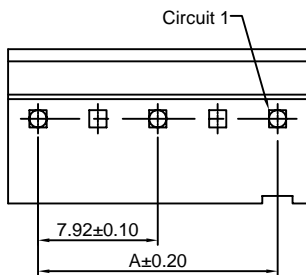
Reference Informations:

- *Material:Pin:Brass/Tin over Nickel
Insulator:Nylon 66,UL94V-2
- *Mates with CJT A3961H-XP(-2) or A3964H-XP, A3964H-XP-A,A3964H-XP-C series Housing
- *Color:Natural

Ordering Information:

A3961WV-XP-R-A - *** - **
1 2 3

- 1.Part No.
- 2.Material:
(blank):Nylon 66,UL94V-2
V0:Nylon 66,UL94V-0
GWT:Nylon 66,UL94V-0,GWT 750°C
- 3.Finish:
(blank):Tin over Nickel
G:Gold over Nickel



Ordering Information & Dimensions:

PART NO.	Dimensions	
	A	B
3P	7.92	11.88
5P	15.84	19.80
7P	23.76	27.72
9P	31.68	35.64
11P	39.60	43.56
13P	47.52	51.48
15P	55.44	59.40
17P	63.36	67.32
19P	71.28	75.24

Unit: mm

A3961WVA-XP-R-A

7.92mm pitch 180° Wafer

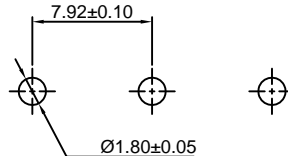
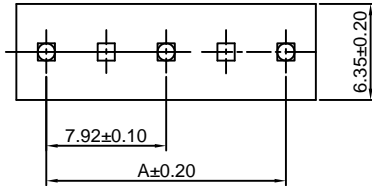
Reference Informations:

- *Material: Pin: Brass/Tin over Nickel
Insulator: Nylon 66, UL94V-2
- *Mates with CJT A3961H-XP-2 or A3964H-XP, A3964H-XP-A, A3964H-XP-C series Housing
- *Color: Natural

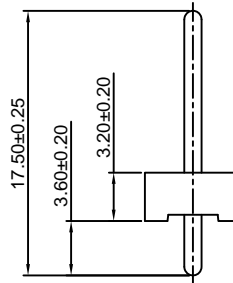
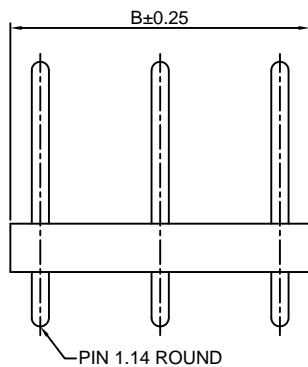
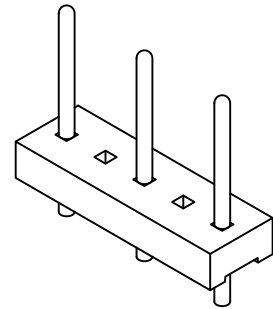
Ordering Information:

A3961WVA-XP-R-A - *** - **
1 2 3

1. Part No.
2. Material:
(blank): Nylon 66, UL94V-2
V0: Nylon 66, UL94V-0
GWT: Nylon 66, UL94V-0, GWT 750°C
3. Finish:
(blank): Tin over Nickel
G: Gold over Nickel



P.C.B LAYOUT



Ordering Information & Dimensions:

PART NO.	Dimensions	
	A	B
3P	7.92	11.88
5P	15.84	19.80
7P	23.76	27.72
9P	31.68	35.64
11P	39.60	43.56
13P	47.52	51.48
15P	55.44	59.40
17P	63.36	67.32
19P	71.28	75.24

Unit: mm

A3961WVB-XP

3.96mm pitch 180° Wafer

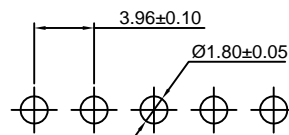
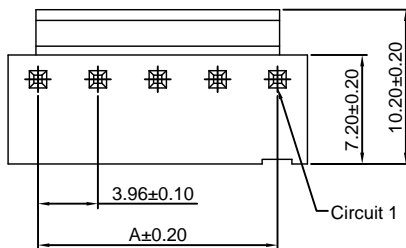
Reference Informations:

- *Material: Pin: Brass/Tin over Nickel
Insulator: Nylon 66, UL94V-0
- *Mates with CJT A3961H-XP(-2/-3) or A3964H-XP, A3964H-XP-A, A3964H-XP-B, A3964H-XP-C series Housing
- *Color: White

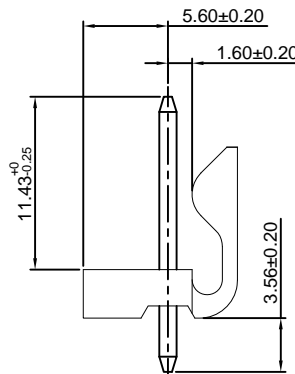
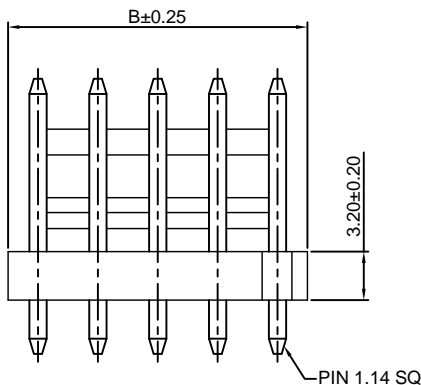
Ordering Information:

A3961WVB-XP - *** - **
1 2 3

1. Part No.
2. Material:
(blank): Nylon 66, UL94V-0
GWT: Nylon 66, UL94V-0, GWT 750°C
3. Finish:
(blank): Tin over Nickel
G: Gold over Nickel



P.C.B LAYOUT



Ordering Information & Dimensions:

PART NO.	Dimensions	
	A	B
2P	3.96	7.92
3P	7.92	11.88
4P	11.88	15.84
5P	15.84	19.80
6P	19.80	23.76
7P	23.76	27.72
8P	27.72	31.68
9P	31.68	35.64
10P	35.64	39.60
11P	39.60	43.56
12P	43.56	47.52
13P	47.52	51.48
14P	51.48	55.44
15P	55.44	59.40
16P	59.40	63.36
17P	63.36	67.32
18P	67.32	71.28
19P	71.28	75.24
20P	75.24	79.20

Unit: mm

A3961WVB-F-XP

3.96mm pitch 180° Wafer

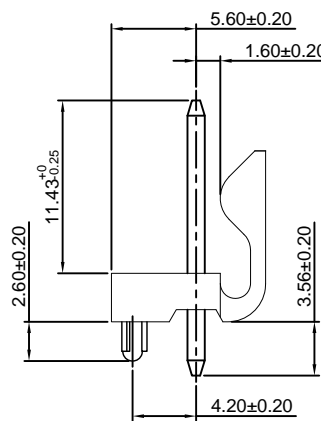
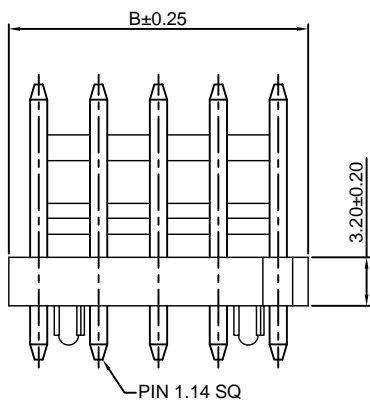
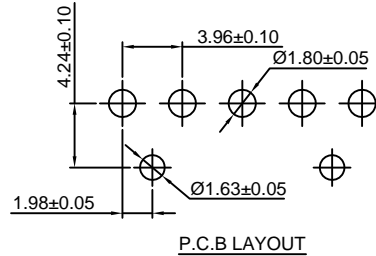
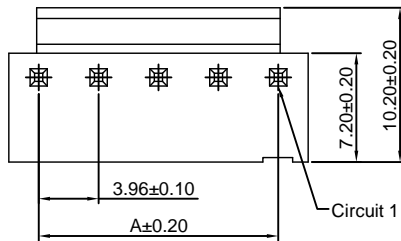
Reference Informations:

- *Material: Pin: Brass/Tin over Nickel
Insulator: Nylon 66, UL94V-0
- *Mates with CJT A3961H-XP(-2/-3) or A3964H-XP, A3964H-XP-A, A3964H-XP-B, A3964H-XP-C series Housing
- *Color: White

Ordering Information:

A3961WVB-F-XP - *** - **
1 2 3

1. Part No.
2. Material:
(blank): Nylon 66, UL94V-0
GWT: Nylon 66, UL94V-0, GWT 750°C
3. Finish:
(blank): Tin over Nickel
G: Gold over Nickel



Ordering Information & Dimensions:

PART NO.	Dimensions	
	A	B
2P	3.96	7.92
3P	7.92	11.88
4P	11.88	15.84
5P	15.84	19.80
6P	19.80	23.76
7P	23.76	27.72
8P	27.72	31.68
9P	31.68	35.64
10P	35.64	39.60
11P	39.60	43.56
12P	43.56	47.52
13P	47.52	51.48
14P	51.48	55.44
15P	55.44	59.40
16P	59.40	63.36
17P	63.36	67.32
18P	67.32	71.28
19P	71.28	75.24
20P	75.24	79.20

Unit: mm

A3961WRB-XP

3.96mm pitch 90° Wafer

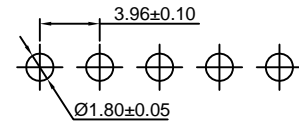
Reference Informations:

- *Material: Pin: Brass/Tin over Nickel
Insulator: Nylon 66, UL94V-0
- *Mates with CJT A3961H-XP(-2/-3) or A3964H-XP, A3964H-XP-A, A3964H-XP-B, A3964H-XP-C series Housing
- *Color: White

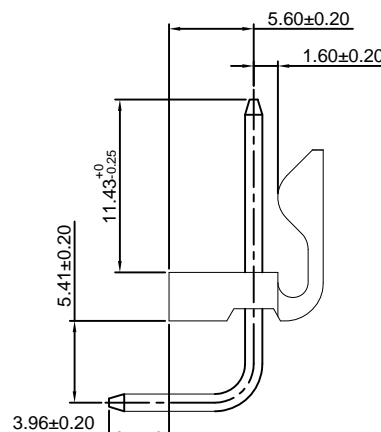
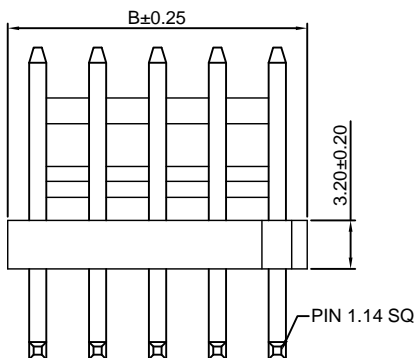
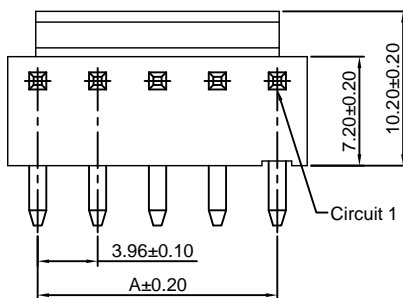
Ordering Information:

A3961WRB-XP - *** - ** - **
1 2 3 4

1. Part No.
2. Material:
(blank): Nylon 66, UL94V-0
GWT: Nylon 66, UL94V-0, GWT 750°C
3. Color:
(blank): White
BK: Black
4. Finish:
(blank): Tin over Nickel
G: Gold over Nickel



P.C.B LAYOUT



Ordering Information & Dimensions:

PART NO.	Dimensions	
	A	B
2P	3.96	7.92
3P	7.92	11.88
4P	11.88	15.84
5P	15.84	19.80
6P	19.80	23.76
7P	23.76	27.72
8P	27.72	31.68
9P	31.68	35.64
10P	35.64	39.60
11P	39.60	43.56
12P	43.56	47.52
13P	47.52	51.48
14P	51.48	55.44
15P	55.44	59.40
16P	59.40	63.36
17P	63.36	67.32
18P	67.32	71.28
19P	71.28	75.24
20P	75.24	79.20
21P	79.20	83.16
22P	83.16	87.12
23P	87.12	91.08
24P	91.08	95.04

Unit: mm

A3961WRB-F-XP

3.96mm pitch 90° Wafer

Reference Informations:

*Material:Pin:Brass/Tin over Nickel
Insulator:Nylon 66,UL94V-0

*Mates with CJT A3961H-XP(-2/-3) or A3964H-XP, A3964H-XP-A,A3964H-XP-B,A3964H-XP-C series Housing

*Color:White

Ordering Information:

A3961WRB-F-XP - *** - **
1 2 3

1.Part No.

2.Material:

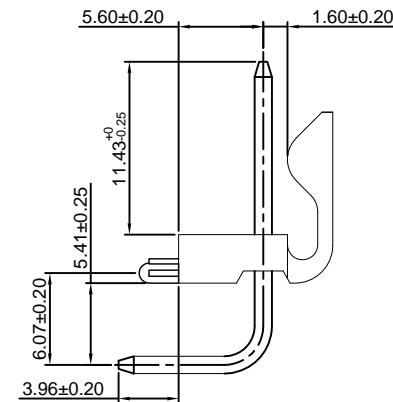
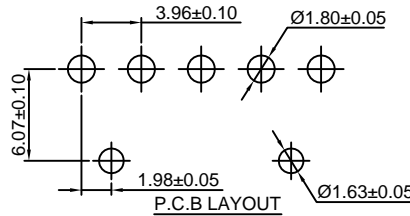
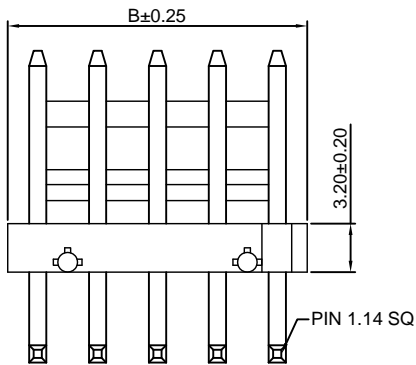
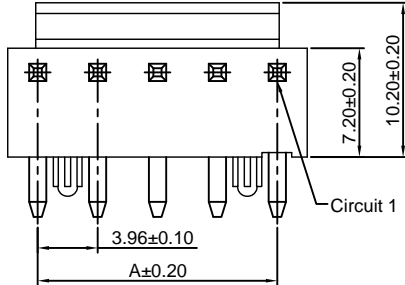
(blank):Nylon 66,UL94V-0

GWT:Nylon 66,UL94V-0,GWT 750°C

3.Finish:

(blank):Tin over Nickel

G:Gold over Nickel



Ordering Information & Dimensions:

PART NO.	Dimensions	
	A	B
2P	3.96	7.92
3P	7.92	11.88
4P	11.88	15.84
5P	15.84	19.80
6P	19.80	23.76
7P	23.76	27.72
8P	27.72	31.68
9P	31.68	35.64
10P	35.64	39.60
11P	39.60	43.56
12P	43.56	47.52
13P	47.52	51.48
14P	51.48	55.44
15P	55.44	59.40
16P	59.40	63.36
17P	63.36	67.32
18P	67.32	71.28
19P	71.28	75.24
20P	75.24	79.20
21P	79.20	83.16
22P	83.16	87.12
23P	87.12	91.08
24P	91.08	95.04

Unit: mm

A3961WRB-F-L-XP

3.96mm pitch 90° Wafer

Reference Informations:

*Material:Pin:Brass/Tin over Nickel
Insulator:Nylon 66,UL94V-0

*Mates with CJT A3961H-XP(-2/-3) or A3964H-XP, A3964H-XP-A,A3964H-XP-B,A3964H-XP-C series Housing

*Color:White

Ordering Information:

A3961WRB-F-L-XP - *** - **
1 2 3

1.Part No.

2.Material:

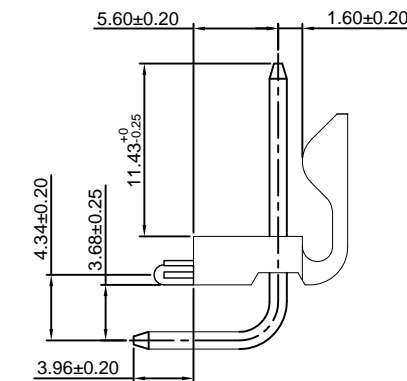
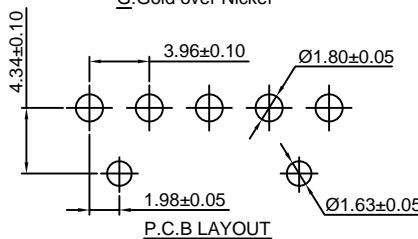
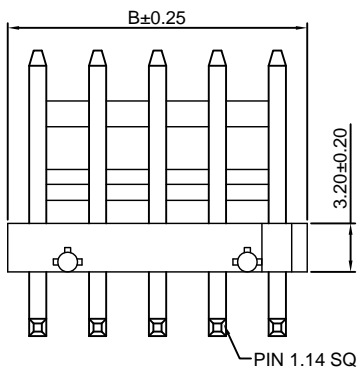
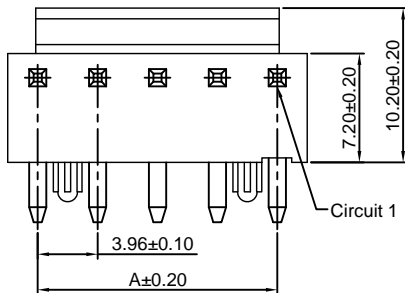
(blank):Nylon 66,UL94V-0

GWT:Nylon 66,UL94V-0,GWT 750°C

3.Finish:

(blank):Tin over Nickel

G:Gold over Nickel



Ordering Information & Dimensions:

PART NO.	Dimensions	
	A	B
2P	3.96	7.92
3P	7.92	11.88
4P	11.88	15.84
5P	15.84	19.80
6P	19.80	23.76
7P	23.76	27.72
8P	27.72	31.68
9P	31.68	35.64
10P	35.64	39.60
11P	39.60	43.56
12P	43.56	47.52
13P	47.52	51.48
14P	51.48	55.44
15P	55.44	59.40
16P	59.40	63.36
17P	63.36	67.32
18P	67.32	71.28
19P	71.28	75.24
20P	75.24	79.20
21P	79.20	83.16
22P	83.16	87.12
23P	87.12	91.08
24P	91.08	95.04

Unit: mm

A3961WVC-XP

3.96mm pitch 180° Wafer

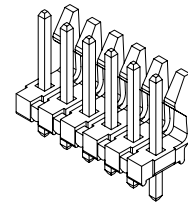
Reference Informations:

- *Material: Pin: Brass/Tin over Nickel
Insulator: Nylon 66, UL94V-0
- *Mates with CJT A3961H-XP(-2) or A3964H-XP, A3964H-XP-A, A3964H-XP-C series Housing
- *Color: Black

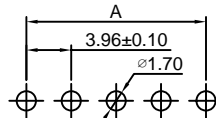
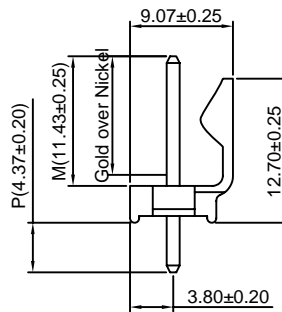
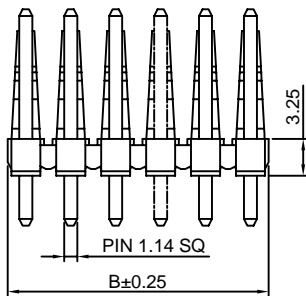
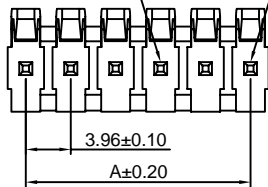
Ordering Information:

A3961WVC-XP - *** - *** - ***
1 2 3 4

- Part No.
- Material:
(blank): Nylon 66, UL94V-0
V2: Nylon 66, UL94V-2
GWT: Nylon 66, UL94V-0, GWT 750°C
- Finish
(blank): Tin over Nickel
G: Gold over Nickel (1u")
G15: Gold over Nickel (15u")
G20: Gold over Nickel (20u")
G30: Gold over Nickel (30u")
- Size (P, M): See ①



Optional Voided CKT Circuit 1



P.C.B LAYOUT

Note: ①

PART NO.	P(mm)	M(mm)	PART NO.	P(mm)	M(mm)
P44M114	4.37	11.43	P115M114	11.53	11.43
P32M114	3.18	11.43	P32M133	3.18	13.28
P25M133	2.51	13.28	P74M114	7.42	11.43
P44M122	4.37	12.19	P123M122	12.34	12.19

Ordering Information & Dimensions:

PART NO.	Dimensions	
	A	B
2P	3.96	7.16
3P	7.92	11.12
4P	11.88	15.08
5P	15.84	19.04
6P	19.80	23.00
7P	23.76	26.96
8P	27.72	30.92
9P	31.68	34.88
10P	35.64	38.84
11P	39.60	42.80
12P	43.56	46.76
13P	47.52	50.72
14P	51.48	54.68
15P	55.44	58.64
16P	59.40	62.60
17P	63.36	66.56
18P	67.32	70.52
19P	71.28	74.48
20P	75.24	78.44
21P	79.20	82.40
22P	83.16	86.36
23P	87.12	90.32
24P	91.08	94.28

Unit: mm

A3961WRC-XP

3.96mm pitch 90° Wafer

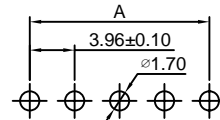
Reference Informations:

- *Material: Pin: Brass/Tin over Nickel
Insulator: Nylon 66, UL94V-0
- *Mates with CJT A3961H-XP(-2) or A3964H-XP, A3964H-XP-A, A3964H-XP-C series Housing
- *Color: Black

Ordering Information:

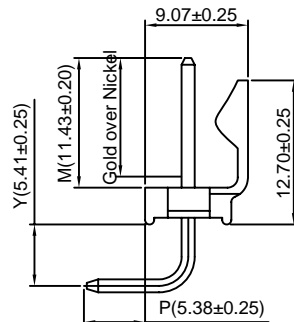
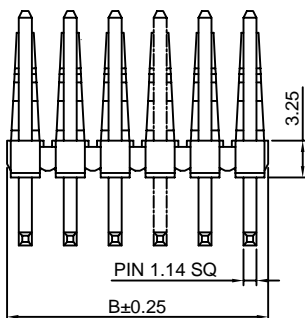
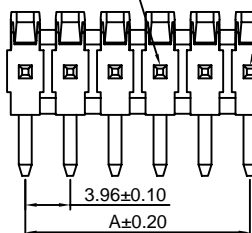
A3961WRC-XP - *** - *** - ***
1 2 3 4

- Part No.
- Material:
(blank): Nylon 66, UL94V-0
V2: Nylon 66, UL94V-2
GWT: Nylon 66, UL94V-0, GWT 750°C
- Finish
(blank): Tin over Nickel
G: Gold over Nickel (1u")
G15: Gold over Nickel (15u")
G20: Gold over Nickel (20u")
G30: Gold over Nickel (30u")
- Size (P, M, Y): See ①



P.C.B LAYOUT

Optional Voided CKT Circuit 1



Note: ①

PART NO.	P(mm)	M(mm)	Y(mm)	PART NO.	P(mm)	M(mm)	Y(mm)
P54M114Y54	5.38	11.43	5.41	P35M114Y56	3.45	11.43	5.61
P35M133Y54	3.45	13.28	5.41	P35M114Y54	3.45	11.43	5.41
P54M133Y55	5.38	13.28	5.51	P47M114Y54	4.69	11.43	5.41
P150M127Y54	15.04	12.67	5.41				

Ordering Information & Dimensions:

PART NO.	Dimensions	
	A	B
2P	3.96	7.16
3P	7.92	11.12
4P	11.88	15.08
5P	15.84	19.04
6P	19.80	23.00
7P	23.76	26.96
8P	27.72	30.92
9P	31.68	34.88
10P	35.64	38.84
11P	39.60	42.80
12P	43.56	46.76
13P	47.52	50.72
14P	51.48	54.68
15P	55.44	58.64
16P	59.40	62.60
17P	63.36	66.56
18P	67.32	70.52
19P	71.28	74.48
20P	75.24	78.44
21P	79.20	82.40
22P	83.16	86.36
23P	87.12	90.32
24P	91.08	94.28

Unit: mm

X-ON Electronics

Largest Supplier of Electrical and Electronic Components

Click to view similar products for [Headers & Wire Housings](#) category:

Click to view products by [Changjiang](#) manufacturer:

Other Similar products are found below :

[95000-104TRLF](#) [10135584-644402LF](#) [DF62W-EP2022PCA](#) [95000-106TRLF](#) [DF62W-2022SCA](#) [DF62W-EP2022PC](#) [2203348](#) [DF62W-2022SC](#) [1084018](#) [1029039](#) [1084017](#) [802-10-012-10-002000](#) [1112640](#) [1112639](#) [891-007-9SS-BST1T](#) [000-34000](#) [0008550134](#) [0009482033](#) [0009507031](#) [57102-F02-18ULF](#) [57102-S06-03LF](#) [57202-S52-04LF](#) [PCN6-15S-2.5E](#) [0039019024](#) [58102-G61-06LF](#) [582553-1](#) [0009485154](#) [0009508121](#) [0022285053](#) [0050291907](#) [018731A](#) [LY20-4P-DT1-P1E-BR](#) [02.125.8002.8](#) [60101931](#) [60598-1 \(Cut Strip\)](#) [M1625-3R/100](#) [61062-3](#) [61082-181009](#) [CSU011177004](#) [636-1427](#) [638009-1](#) [641938-9](#) [641991-4](#) [644168-1](#) [644827-2](#) [647662-1](#) [65039-019ELF](#) [65692-001LF](#) [65781-018](#) [65781-047](#)