

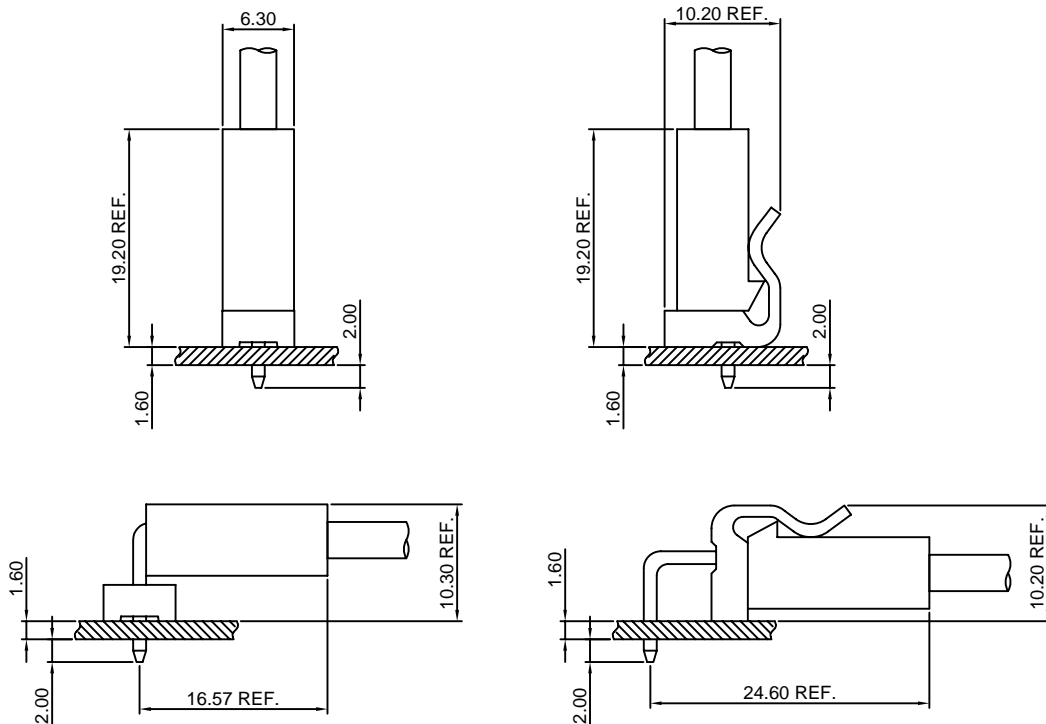
Specifications

- Current rating:7A AC,DC
- Voltage rating:250V AC,DC
- Temperature range:-40°C~+105°C
- Contact resistance:10mΩMax.
- Insulation resistance:1000MΩMin.
- Withstanding voltage:1500V AC/minute
- *Compliant with RoHS and REACH*
- *Meet the HF/Halogen Free,GWT/Glow wire Test (IEC60335-1) request,need to customize*
- *Contact CJT for details*

Standards



Assembly layout

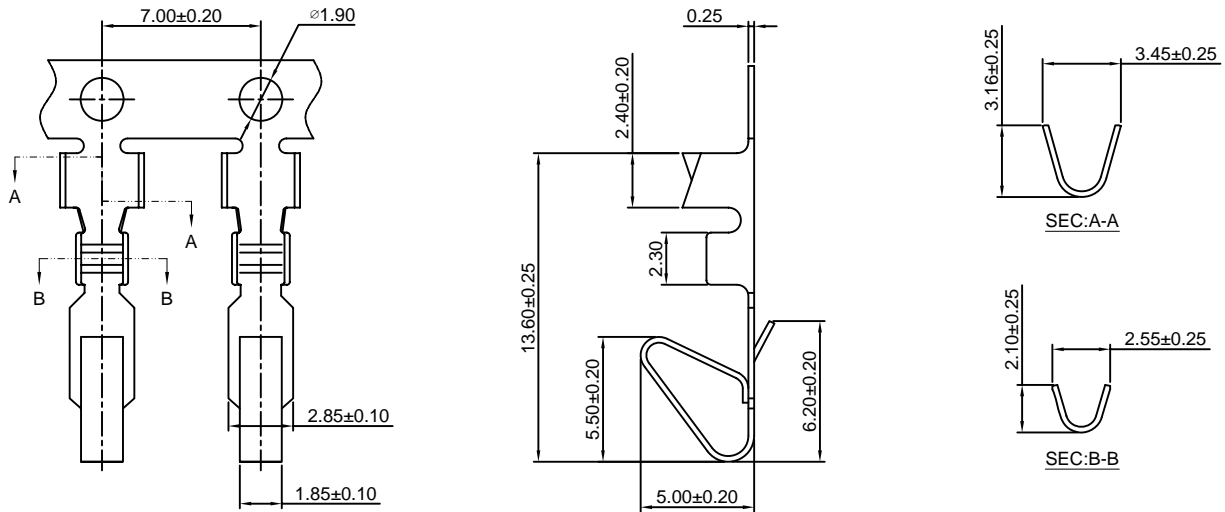


A3961-T

3.96mm pitch Crimp Terminal

Reference Informations:

*Used in CJT A3961H-XP,A3961H-XP-2,A3961H-XP-3, A5081H-XP series Housing



Ordering information & Specifications:

Unit:mm

| Part NO. | Wire Range | Insulation O.D. | Material | Finish | Qty/reel |
|----------|------------|-----------------|-----------------|------------------|-----------|
| A3961-TB | AWG#18-#24 | 2.80mm(max) | Brass | Tin over Nickel | 6,000 PCS |
| A3961-TP | AWG#18-#24 | 2.80mm(max) | Phosphor Bronze | Tin over Nickel | 6,000 PCS |
| A3961-GB | AWG#18-#24 | 2.80mm(max) | Brass | Gold over Nickel | 6,000 PCS |
| A3961-GP | AWG#18-#24 | 2.80mm(max) | Phosphor Bronze | Gold over Nickel | 6,000 PCS |

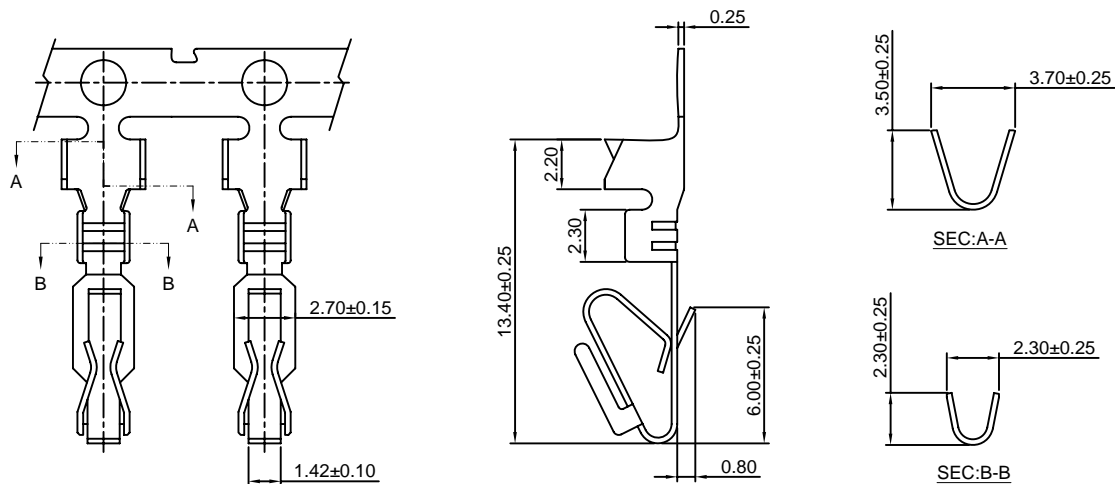
Optional Gold plating available but MOQ requested

A3961-T-1

3.96mm pitch Crimp Terminal

Reference Informations:

*Used in CJT A3961H-XP,A3961H-XP-2,A3961H-XP-3, A5081H-XP series Housing



Ordering information & Specifications:

Unit:mm

| Part NO. | Wire Range | Insulation O.D. | Material | Finish | Qty/reel |
|------------|------------|-----------------|-----------------|------------------|-----------|
| A3961-TB-1 | AWG#18-#24 | 2.80mm(max) | Brass | Tin over Nickel | 6,000 PCS |
| A3961-TP-1 | AWG#18-#24 | 2.80mm(max) | Phosphor Bronze | Tin over Nickel | 6,000 PCS |
| A3961-GB-1 | AWG#18-#24 | 2.80mm(max) | Brass | Gold over Nickel | 6,000 PCS |
| A3961-GP-1 | AWG#18-#24 | 2.80mm(max) | Phosphor Bronze | Gold over Nickel | 6,000 PCS |

Optional Gold plating available but MOQ requested

A3961H-XP

3.96mm pitch Housing

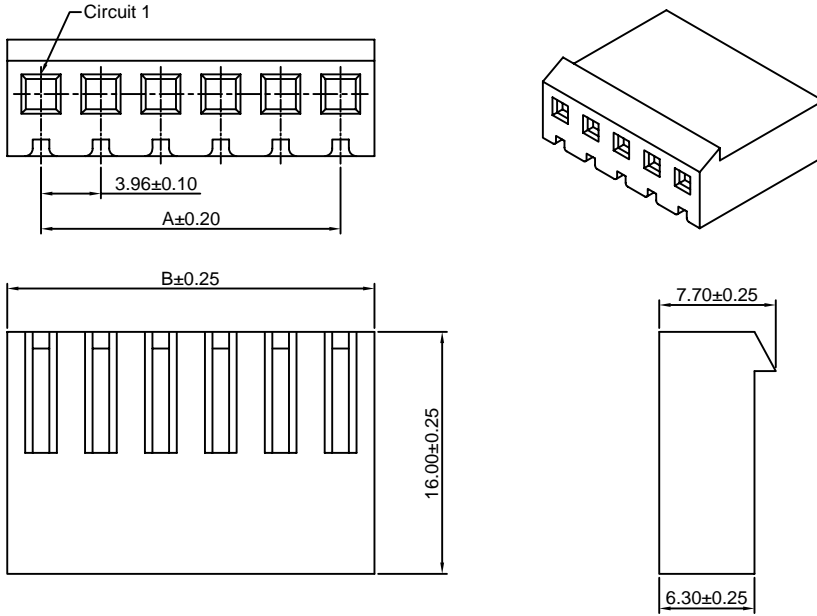
Reference Informations:

- *Material:Nylon 66,UL94V-2
- *Suitable CJT A3961-T(-1) series Terminal
- *Mates with CJT A3961WV,WR,WVA,WRA-XP(-A), A3961WV,WVA-XP-R(-A),A3961WVB-F,WRB-F-XP, A3961WVB,WRB,WVC,WRC-XP series Wafer
- *Color:Natural

Ordering Information:

- A3961H-XP - ***
 1 2
- 1.Part No.
 - 2.Material:
 (blank):Nylon 66,UL94V-2
 V0:Nylon 66,UL94V-0
 GWT:Nylon 66,UL94V-0,GWT 750°C

Ordering Information & Dimensions:



| PART NO. | Dimensions | |
|----------|------------|-------|
| | A | B |
| 2P | 3.96 | 8.43 |
| 3P | 7.92 | 12.39 |
| 4P | 11.88 | 16.35 |
| 5P | 15.84 | 20.31 |
| 6P | 19.80 | 24.27 |
| 7P | 23.76 | 28.23 |
| 8P | 27.72 | 32.19 |
| 9P | 31.68 | 36.15 |
| 10P | 35.64 | 40.11 |
| 11P | 39.60 | 44.07 |
| 12P | 43.56 | 48.03 |
| 13P | 47.52 | 51.99 |
| 14P | 51.48 | 55.95 |
| 15P | 55.44 | 59.91 |
| 16P | 59.40 | 63.87 |
| 17P | 63.36 | 67.83 |
| 18P | 67.32 | 71.79 |
| 19P | 71.28 | 75.75 |
| 20P | 75.24 | 79.71 |
| 21P | 79.20 | 83.67 |
| 22P | 83.16 | 87.63 |
| 23P | 87.12 | 91.59 |
| 24P | 91.08 | 95.55 |

Unit: mm

A3961H-XP-2

3.96mm pitch Housing

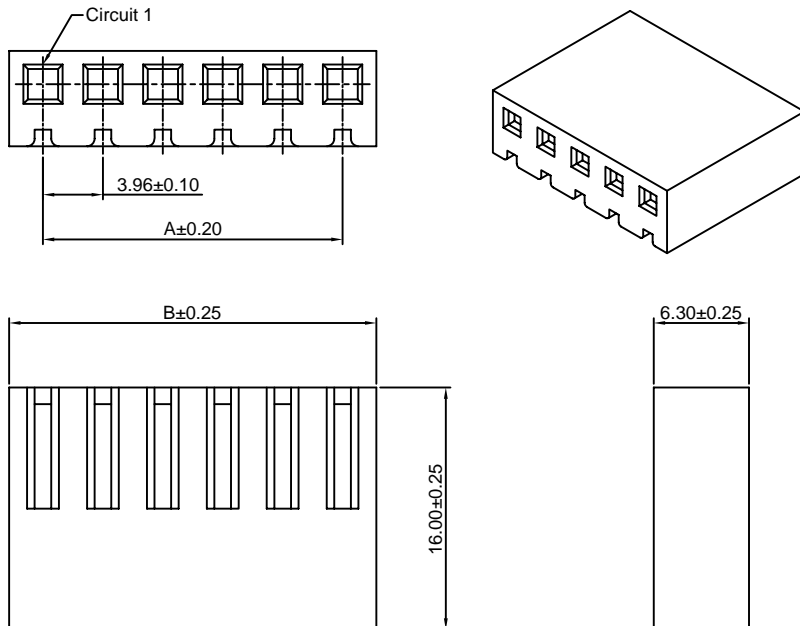
Reference Informations:

- *Material:Nylon 66,UL94V-2
- *Suitable CJT A3961-T(-1) series Terminal
- *Mates with CJT A3961WV,WR,WVA,WRA-XP(-A), A3961WV,WVA-XP-R(-A),A3961WVB-F,WRB-F-XP, A3961WVB,WRB,WVC,WRC-XP series Wafer
- *Color:Natural

Ordering Information:

- A3961H-XP-2 - ***
 1 2
- 1.Part No.
 - 2.Material:
 (blank):Nylon 66,UL94V-2
 V0:Nylon 66,UL94V-0
 GWT:Nylon 66,UL94V-0,GWT 750°C

Ordering Information & Dimensions:



| PART NO. | Dimensions | |
|----------|------------|-------|
| | A | B |
| 2P | 3.96 | 8.43 |
| 3P | 7.92 | 12.39 |
| 4P | 11.88 | 16.35 |
| 5P | 15.84 | 20.31 |
| 6P | 19.80 | 24.27 |
| 7P | 23.76 | 28.23 |
| 8P | 27.72 | 32.19 |
| 9P | 31.68 | 36.15 |
| 10P | 35.64 | 40.11 |
| 11P | 39.60 | 44.07 |
| 12P | 43.56 | 48.03 |
| 13P | 47.52 | 51.99 |
| 14P | 51.48 | 55.95 |
| 15P | 55.44 | 59.91 |
| 16P | 59.40 | 63.87 |
| 17P | 63.36 | 67.83 |
| 18P | 67.32 | 71.79 |
| 19P | 71.28 | 75.75 |
| 20P | 75.24 | 79.71 |
| 21P | 79.20 | 83.67 |
| 22P | 83.16 | 87.63 |
| 23P | 87.12 | 91.59 |
| 24P | 91.08 | 95.55 |

Unit: mm

A3961H-XP-3-V0

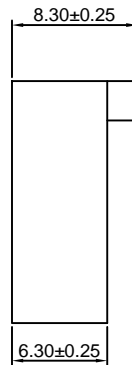
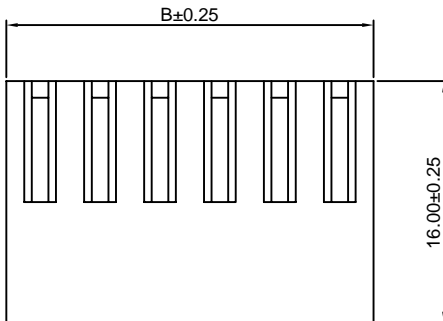
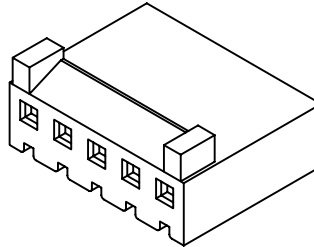
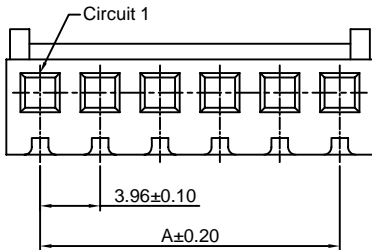
3.96mm pitch Housing

Reference Informations:

- *Material: Nylon 66, UL94V-0
- *Suitable CJT A3961-T(-1) series Terminal
- *Mates with CJT A3961WVA, WRA-XP(-A), A3961WVA-XP-R(-A), A3961WVB-F, WRB-F-XP, A3961WVB, WRB-XP, D3961WV, WR-XP series Wafer
- *Color: Natural

Ordering Information:

- A3961H-XP-3 - ***
 1 2
1. Part No.
 2. Material:
 V0: Nylon 66, UL94V-0
 GWT: Nylon 66, UL94V-0, GWT 750°C



Ordering Information & Dimensions:

| PART NO. | Dimensions | |
|----------|------------|-------|
| | A | B |
| 2P | 3.96 | 8.43 |
| 3P | 7.92 | 12.39 |
| 4P | 11.88 | 16.35 |
| 5P | 15.84 | 20.31 |
| 6P | 19.80 | 24.27 |
| 7P | 23.76 | 28.23 |
| 8P | 27.72 | 32.19 |
| 9P | 31.68 | 36.15 |
| 10P | 35.64 | 40.11 |
| 11P | 39.60 | 44.07 |
| 12P | 43.56 | 48.03 |
| 13P | 47.52 | 51.99 |
| 14P | 51.48 | 55.95 |
| 15P | 55.44 | 59.91 |
| 16P | 59.40 | 63.87 |
| 17P | 63.36 | 67.83 |
| 18P | 67.32 | 71.79 |
| 19P | 71.28 | 75.75 |
| 20P | 75.24 | 79.71 |
| 21P | 79.20 | 83.67 |
| 22P | 83.16 | 87.63 |
| 23P | 87.12 | 91.59 |
| 24P | 91.08 | 95.55 |

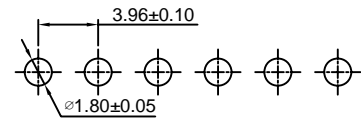
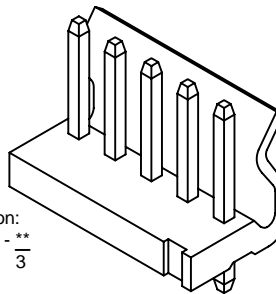
Unit: mm

A3961WV-XP

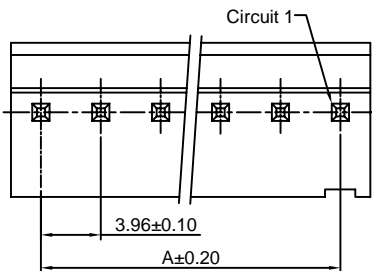
3.96mm pitch 180° Wafer

Reference Informations:

- *Material: Pin: Brass/Tin over Nickel
 Insulator: Nylon 66, UL94V-2
- *Mates with CJT A3961H-XP(-2) or A3964H-XP, A3964H-XP-A, A3964H-XP-C series Housing
- *Color: Natural

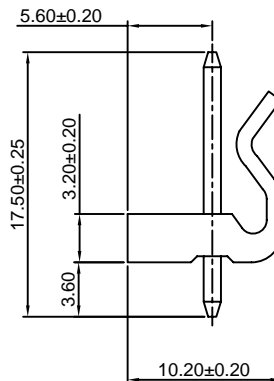
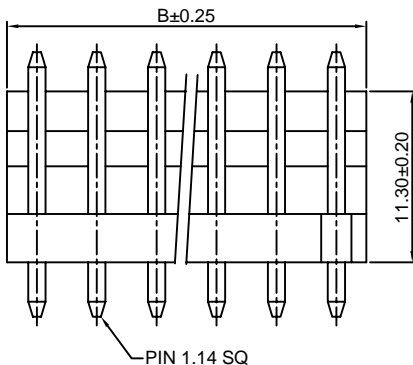


P.C.B LAYOUT



Ordering Information:

- A3961WV-XP - *** - **
 1 2 3
1. Part No.
 2. Material:
 (blank): Nylon 66, UL94V-2
 V0: Nylon 66, UL94V-0
 GWT: Nylon 66, UL94V-0, GWT 750°C
 3. Finish:
 (blank): Tin over Nickel
 G: Gold over Nickel



Ordering Information & Dimensions:

| PART NO. | Dimensions | |
|----------|------------|-------|
| | A | B |
| 2P | 3.96 | 8.43 |
| 3P | 7.92 | 12.39 |
| 4P | 11.88 | 16.35 |
| 5P | 15.84 | 20.31 |
| 6P | 19.80 | 24.27 |
| 7P | 23.76 | 28.23 |
| 8P | 27.72 | 32.19 |
| 9P | 31.68 | 36.15 |
| 10P | 35.64 | 40.11 |
| 11P | 39.60 | 44.07 |
| 12P | 43.56 | 48.03 |
| 13P | 47.52 | 51.99 |
| 14P | 51.48 | 55.95 |
| 15P | 55.44 | 59.91 |
| 16P | 59.40 | 63.87 |
| 17P | 63.36 | 67.83 |
| 18P | 67.32 | 71.79 |
| 19P | 71.28 | 75.75 |
| 20P | 75.24 | 79.71 |
| 21P | 79.20 | 83.67 |
| 22P | 83.16 | 87.63 |
| 23P | 87.12 | 91.59 |
| 24P | 91.08 | 95.55 |

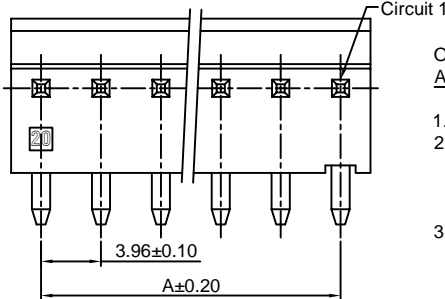
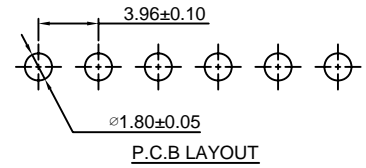
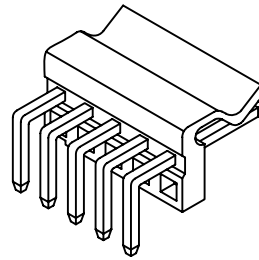
Unit: mm

A3961WR-XP

3.96mm pitch 90° Wafer

Reference Informations:

- *Material: Pin: Brass/Tin over Nickel
Insulator: Nylon 66, UL94V-2
- *Mates with CJT A3961H-XP(-2) or A3964H-XP, A3964H-XP-A, A3964H-XP-C series Housing
- *Color: Natural



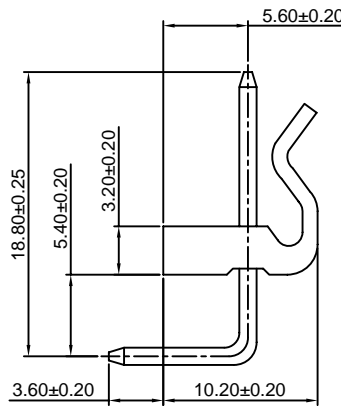
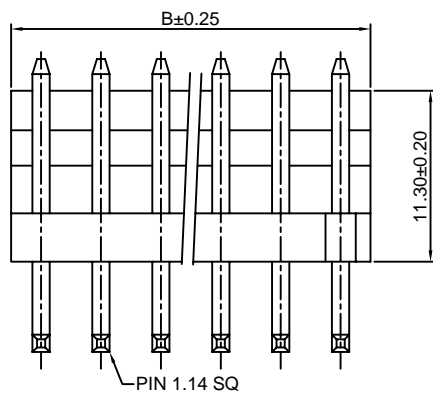
Ordering Information:
A3961WR-XP - *** - **
1 2 3

1. Part No.
2. Material:
(blank): Nylon 66, UL94V-2
V0: Nylon 66, UL94V-0
GWT: Nylon 66, UL94V-0, GWT 750°C
3. Finish:
(blank): Tin over Nickel
G: Gold over Nickel

Ordering Information & Dimensions:

| PART NO. | Dimensions | |
|----------|------------|-------|
| | A | B |
| 2P | 3.96 | 7.92 |
| 3P | 7.92 | 11.88 |
| 4P | 11.88 | 15.84 |
| 5P | 15.84 | 19.80 |
| 6P | 19.80 | 23.76 |
| 7P | 23.76 | 27.72 |
| 8P | 27.72 | 31.68 |
| 9P | 31.68 | 35.64 |
| 10P | 35.64 | 39.60 |
| 11P | 39.60 | 43.56 |
| 12P | 43.56 | 47.52 |
| 13P | 47.52 | 51.48 |
| 14P | 51.48 | 55.44 |
| 15P | 55.44 | 59.40 |
| 16P | 59.40 | 63.36 |
| 17P | 63.36 | 67.32 |
| 18P | 67.32 | 71.28 |
| 19P | 71.28 | 75.24 |
| 20P | 75.24 | 79.20 |
| 21P | 79.20 | 83.16 |
| 22P | 83.16 | 87.12 |
| 23P | 87.12 | 91.08 |
| 24P | 91.08 | 95.04 |

Unit: mm

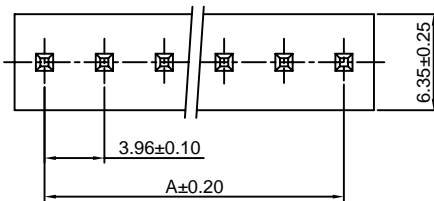
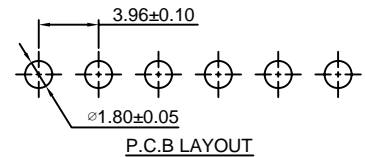
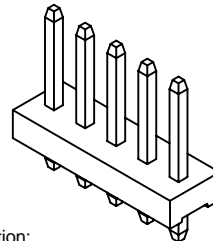


A3961WVA-XP

3.96mm pitch 180° Wafer

Reference Informations:

- *Material: Pin: Brass/Tin over Nickel
Insulator: Nylon 66, UL94V-2
- *Mates with CJT A3961H-XP(-2/-3) or A3964H-XP, A3964H-XP-A, A3964H-XP-B, A3964H-XP-C series Housing
- *Color: Natural



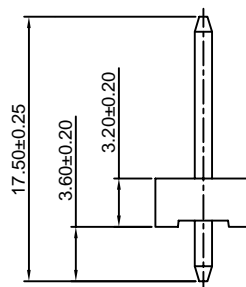
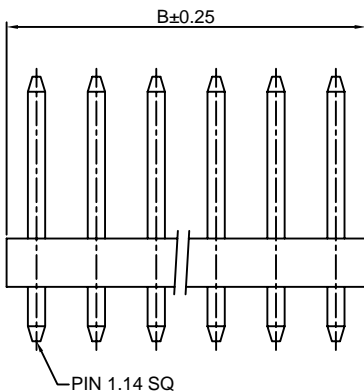
Ordering Information:
A3961WVA-XP - *** - **
1 2 3

1. Part No.
2. Material:
(blank): Nylon 66, UL94V-2
V0: Nylon 66, UL94V-0
GWT: Nylon 66, UL94V-0, GWT 750°C
3. Finish:
(blank): Tin over Nickel
G: Gold over Nickel

Ordering Information & Dimensions:

| PART NO. | Dimensions | |
|----------|------------|-------|
| | A | B |
| 2P | 3.96 | 7.92 |
| 3P | 7.92 | 11.88 |
| 4P | 11.88 | 15.84 |
| 5P | 15.84 | 19.80 |
| 6P | 19.80 | 23.76 |
| 7P | 23.76 | 27.72 |
| 8P | 27.72 | 31.68 |
| 9P | 31.68 | 35.64 |
| 10P | 35.64 | 39.60 |
| 11P | 39.60 | 43.56 |
| 12P | 43.56 | 47.52 |
| 13P | 47.52 | 51.48 |
| 14P | 51.48 | 55.44 |
| 15P | 55.44 | 59.40 |
| 16P | 59.40 | 63.36 |
| 17P | 63.36 | 67.32 |
| 18P | 67.32 | 71.28 |
| 19P | 71.28 | 75.24 |
| 20P | 75.24 | 79.20 |
| 21P | 79.20 | 83.16 |
| 22P | 83.16 | 87.12 |
| 23P | 87.12 | 91.08 |
| 24P | 91.08 | 95.04 |

Unit: mm



A3961WRA-XP

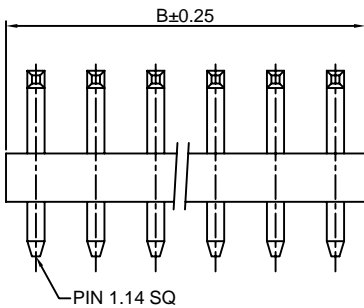
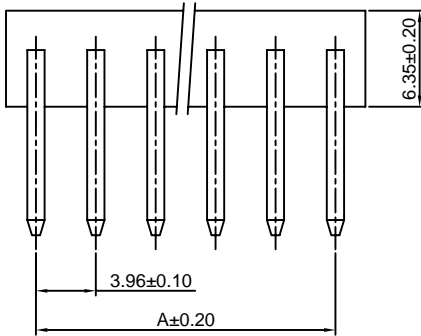
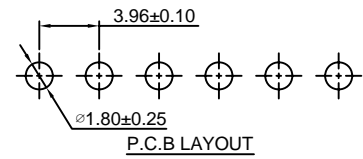
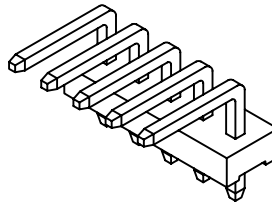
3.96mm pitch 90° Wafer

Reference Informations:

*Material:Pin:Brass/Tin over Nickel
Insulator:Nylon 66,UL94V-2

*Mates with CJT A3961H-XP(-2/-3) or A3964H-XP, A3964H-XP-A,A3964H-XP-B,A3964H-XP-C series Housing

*Color:Natural



Ordering Information:

A3961WRA-XP - *** - **
1 2 3

1.Part No.

2.Material:

(blank):Nylon 66,UL94V-2

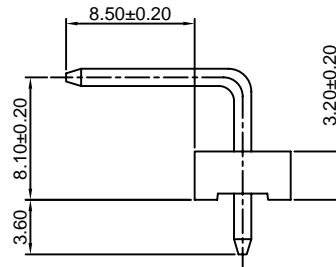
V0:Nylon 66,UL94V-0

GWT:Nylon 66,UL94V-0,GWT 750°C

3.Finish:

(blank):Tin over Nickel

G:Gold over Nickel



Ordering Information & Dimensions:

| PART NO. | Dimensions | |
|----------|------------|-------|
| | A | B |
| 2P | 3.96 | 7.92 |
| 3P | 7.92 | 11.88 |
| 4P | 11.88 | 15.84 |
| 5P | 15.84 | 19.80 |
| 6P | 19.80 | 23.76 |
| 7P | 23.76 | 27.72 |
| 8P | 27.72 | 31.68 |
| 9P | 31.68 | 35.64 |
| 10P | 35.64 | 39.60 |
| 11P | 39.60 | 43.56 |
| 12P | 43.56 | 47.52 |
| 13P | 47.52 | 51.48 |
| 14P | 51.48 | 55.44 |
| 15P | 55.44 | 59.40 |
| 16P | 59.40 | 63.36 |
| 17P | 63.36 | 67.32 |
| 18P | 67.32 | 71.28 |
| 19P | 71.28 | 75.24 |
| 20P | 75.24 | 79.20 |
| 21P | 79.20 | 83.16 |
| 22P | 83.16 | 87.12 |
| 23P | 87.12 | 91.08 |
| 24P | 91.08 | 95.04 |

Unit: mm

A3961WV-XP-R

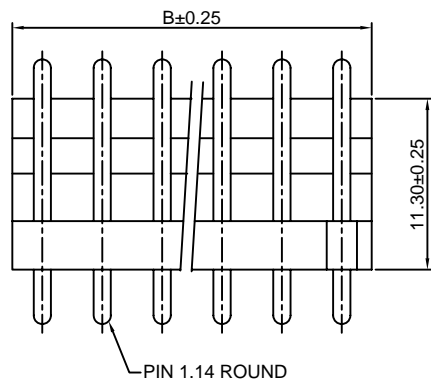
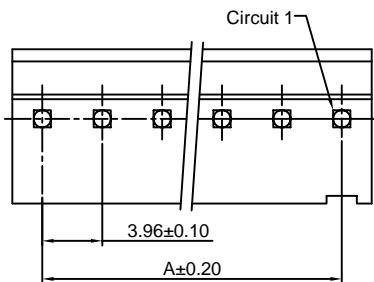
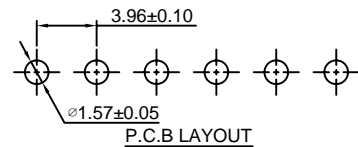
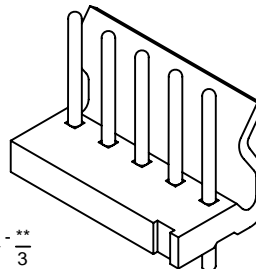
3.96mm pitch 180° Wafer, Round PIN

Reference Informations:

*Material:Pin:Brass/Tin over Nickel
Insulator:Nylon 66,UL94V-2

*Mates with CJT A3961H-XP(-2) or A3964H-XP, A3964H-XP-A,A3964H-XP-C series Housing

*Color:Natural



Ordering Information:

A3961WV-XP-R - *** - **
1 2 3

1.Part No.

2.Material:

(blank):Nylon 66,UL94V-2

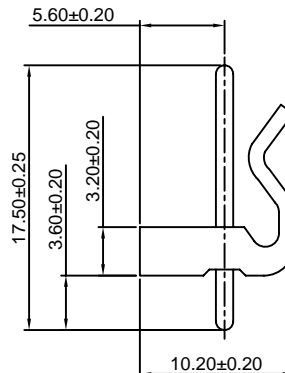
V0:Nylon 66,UL94V-0

GWT:Nylon 66,UL94V-0,GWT 750°C

3.Finish:

(blank):Tin over Nickel

G:Gold over Nickel



Ordering Information & Dimensions:

| PART NO. | Dimensions | |
|----------|------------|-------|
| | A | B |
| 2P | 3.96 | 7.92 |
| 3P | 7.92 | 11.88 |
| 4P | 11.88 | 15.84 |
| 5P | 15.84 | 19.80 |
| 6P | 19.80 | 23.76 |
| 7P | 23.76 | 27.72 |
| 8P | 27.72 | 31.68 |
| 9P | 31.68 | 35.64 |
| 10P | 35.64 | 39.60 |
| 11P | 39.60 | 43.56 |
| 12P | 43.56 | 47.52 |
| 13P | 47.52 | 51.48 |
| 14P | 51.48 | 55.44 |
| 15P | 55.44 | 59.40 |
| 16P | 59.40 | 63.36 |
| 17P | 63.36 | 67.32 |
| 18P | 67.32 | 71.28 |
| 19P | 71.28 | 75.24 |
| 20P | 75.24 | 79.20 |
| 21P | 79.20 | 83.16 |
| 22P | 83.16 | 87.12 |
| 23P | 87.12 | 91.08 |
| 24P | 91.08 | 95.04 |

Unit: mm

A3961WVA-XP-R

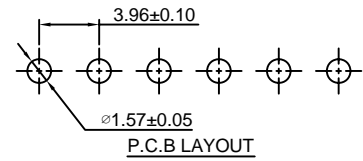
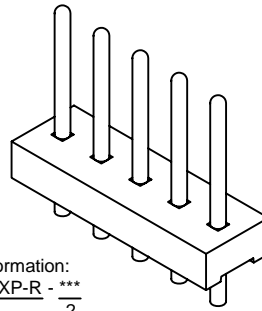
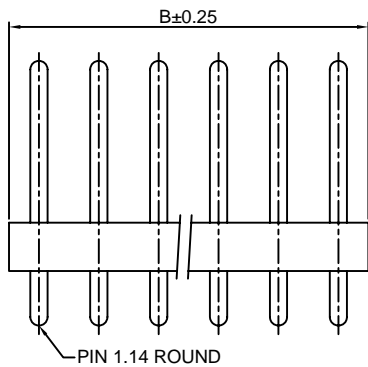
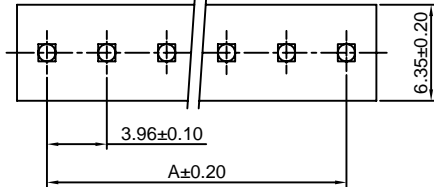
3.96mm pitch 180° Wafer, Round PIN

Reference Informations:

*Material:Pin:Brass/Tin over Nickel
Insulator:Nylon 66,UL94V-2

*Mates with CJT A3961H-XP(-2/-3) or A3964H-XP, A3964H-XP-A,A3964H-XP-B,A3964H-XP-C series Housing

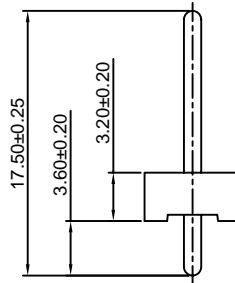
*Color:Natural



Ordering Information:

A3961WVA-XP-R - ***
1 2

- Part No.
- Material:
(blank):Nylon 66,UL94V-2
V0:Nylon 66,UL94V-0
GWT:Nylon 66,UL94V-0,GWT 750°C
- Finish:
(blank):Tin over Nickel
G:Gold over Nickel



Ordering Information & Dimensions:

| PART NO. | Dimensions | |
|----------|------------|-------|
| | A | B |
| 2P | 3.96 | 7.92 |
| 3P | 7.92 | 11.88 |
| 4P | 11.88 | 15.84 |
| 5P | 15.84 | 19.80 |
| 6P | 19.80 | 23.76 |
| 7P | 23.76 | 27.72 |
| 8P | 27.72 | 31.68 |
| 9P | 31.68 | 35.64 |
| 10P | 35.64 | 39.60 |
| 11P | 39.60 | 43.56 |
| 12P | 43.56 | 47.52 |
| 13P | 47.52 | 51.48 |
| 14P | 51.48 | 55.44 |
| 15P | 55.44 | 59.40 |
| 16P | 59.40 | 63.36 |
| 17P | 63.36 | 67.32 |
| 18P | 67.32 | 71.28 |
| 19P | 71.28 | 75.24 |
| 20P | 75.24 | 79.20 |
| 21P | 79.20 | 83.16 |
| 22P | 83.16 | 87.12 |
| 23P | 87.12 | 91.08 |
| 24P | 91.08 | 95.04 |

Unit: mm

A3961WV-XP-A

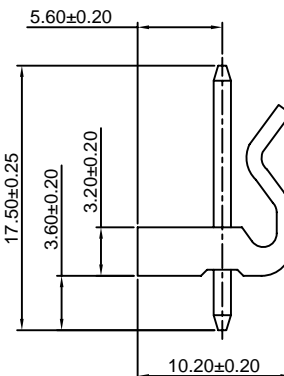
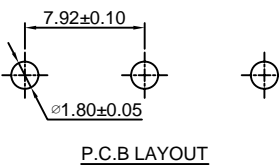
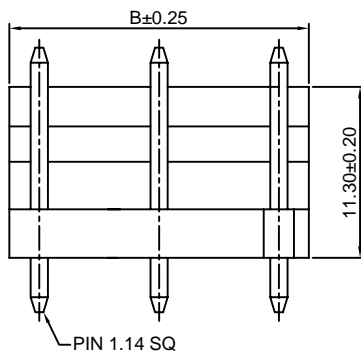
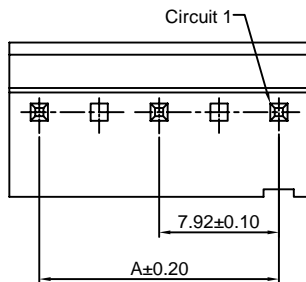
7.92mm pitch 180° Wafer

Reference Informations:

*Material:Pin:Brass/Tin over Nickel
Insulator:Nylon 66,UL94V-2

*Mates with CJT A3961H-XP(-2) or A3964H-XP, A3964H-XP-A,A3964H-XP-C series Housing

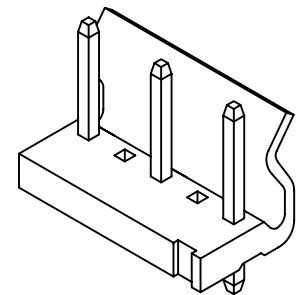
*Color:Natural



Ordering Information:

A3961WV-XP-A - *** - **
1 2 3

- Part No.
- Material:
(blank):Nylon 66,UL94V-2
V0:Nylon 66,UL94V-0
GWT:Nylon 66,UL94V-0,GWT 750°C
- Finish:
(blank):Tin over Nickel
G:Gold over Nickel



Ordering Information & Dimensions:

| PART NO. | Dimensions | |
|----------|------------|-------|
| | A | B |
| 3P | 7.92 | 11.88 |
| 5P | 15.84 | 19.80 |
| 7P | 23.76 | 27.72 |
| 9P | 31.68 | 35.64 |
| 11P | 39.60 | 43.56 |
| 13P | 47.52 | 51.48 |
| 15P | 55.44 | 59.40 |
| 17P | 63.36 | 67.32 |
| 19P | 71.28 | 75.24 |

Unit: mm

A3961WR-XP-A

7.92mm pitch 90° Wafer

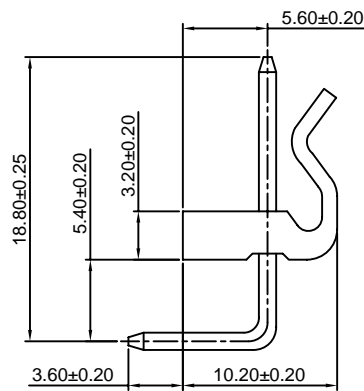
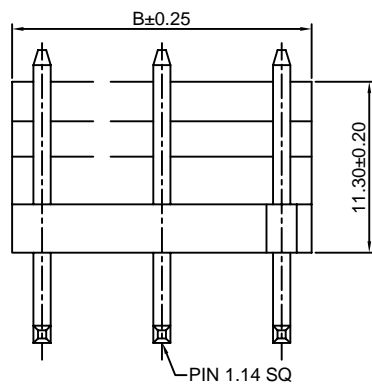
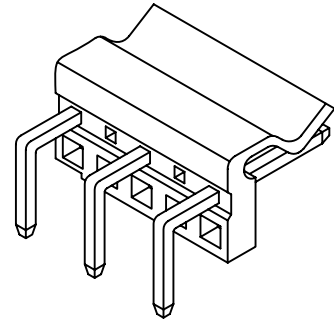
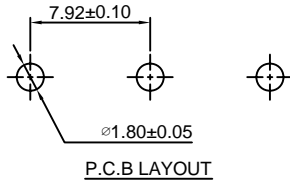
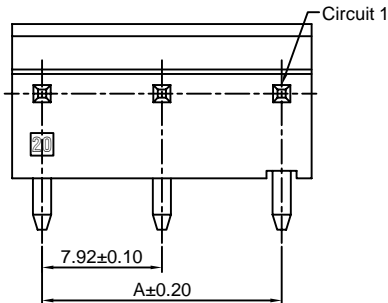
Reference Informations:

- *Material: Pin: Brass/Tin over Nickel
Insulator: Nylon 66, UL94V-2
- *Mates with CJT A3961H-XP(-2) or A3964H-XP, A3964H-XP-A, A3964H-XP-C series Housing
- *Color: Natural

Ordering Information:

A3961WR-XP-A - *** - **
1 2 3

1. Part No.
2. Material:
(blank): Nylon 66, UL94V-2
V0: Nylon 66, UL94V-0
GWT: Nylon 66, UL94V-0, GWT 750°C
3. Finish:
(blank): Tin over Nickel
G: Gold over Nickel



Ordering Information & Dimensions:

| PART NO. | Dimensions | |
|----------|------------|-------|
| | A | B |
| 3P | 7.92 | 11.88 |
| 5P | 15.84 | 19.80 |
| 7P | 23.76 | 27.72 |
| 9P | 31.68 | 35.64 |
| 11P | 39.60 | 43.56 |
| 13P | 47.52 | 51.48 |
| 15P | 55.44 | 59.40 |
| 17P | 63.36 | 67.32 |
| 19P | 71.28 | 75.24 |

Unit: mm

A3961WVA-XP-A

7.92mm pitch 180° Wafer

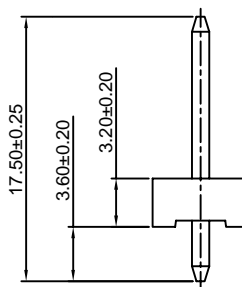
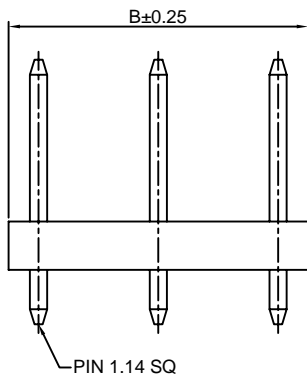
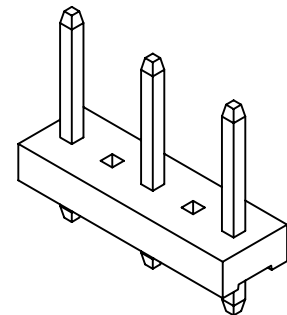
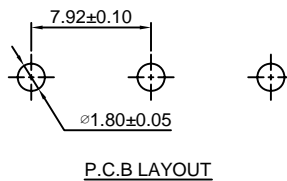
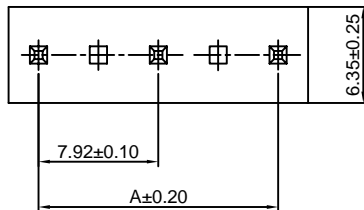
Reference Informations:

- *Material: Pin: Brass/Tin over Nickel
Insulator: Nylon 66, UL94V-2
- *Mates with CJT A3961H-XP(-2/-3) or A3964H-XP, A3964H-XP-A, A3964H-XP-B, A3964H-XP-C series Housing
- *Color: Natural

Ordering Information:

A3961WVA-XP-A - *** - **
1 2 3

1. Part No.
2. Material:
(blank): Nylon 66, UL94V-2
V0: Nylon 66, UL94V-0
GWT: Nylon 66, UL94V-0, GWT 750°C
3. Finish:
(blank): Tin over Nickel
G: Gold over Nickel



Ordering Information & Dimensions:

| PART NO. | Dimensions | |
|----------|------------|-------|
| | A | B |
| 3P | 7.92 | 11.88 |
| 5P | 15.84 | 19.80 |
| 7P | 23.76 | 27.72 |
| 9P | 31.68 | 35.64 |
| 11P | 39.60 | 43.56 |
| 13P | 47.52 | 51.48 |
| 15P | 55.44 | 59.40 |
| 17P | 63.36 | 67.32 |
| 19P | 71.28 | 75.24 |

Unit: mm

A3961WRA-XP-A

7.92mm pitch 90° Wafer

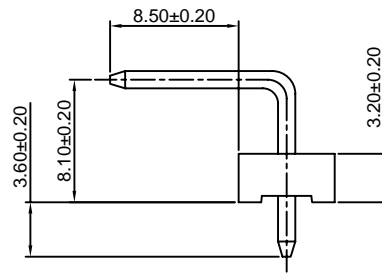
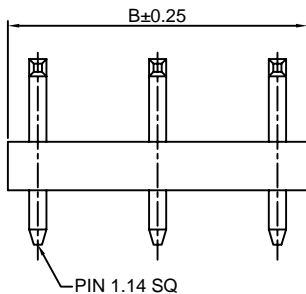
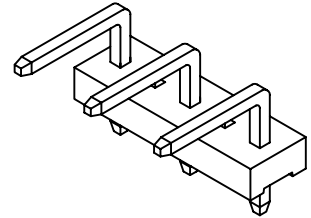
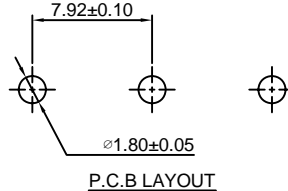
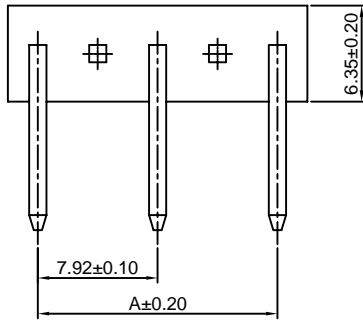
Reference Informations:

- *Material:Pin:Brass/Tin over Nickel
Insulator:Nylon 66,UL94V-2
- *Mates with CJT A3961H-XP(-2/-3) or A3964H-XP, A3964H-XP-A,A3964H-XP-B,A3964H-XP-C series Housing
- *Color:Natural

Ordering Information:

A3961WRA-XP-A - *** - **
1 2 3

- 1.Part No.
- 2.Material:
(blank):Nylon 66,UL94V-2
V0:Nylon 66,UL94V-0
GWT:Nylon 66,UL94V-0,GWT 750°C
- 3.Finish:
(blank):Tin over Nickel
G:Gold over Nickel



Ordering Information & Dimensions:

| PART NO. | Dimensions | |
|----------|------------|-------|
| | A | B |
| 3P | 7.92 | 11.88 |
| 5P | 15.84 | 19.80 |
| 7P | 23.76 | 27.72 |
| 9P | 31.68 | 35.64 |
| 11P | 39.60 | 43.56 |
| 13P | 47.52 | 51.48 |
| 15P | 55.44 | 59.40 |
| 17P | 63.36 | 67.32 |
| 19P | 71.28 | 75.24 |

Unit: mm

A3961WV-XP-R-A

7.92mm pitch 180° Wafer

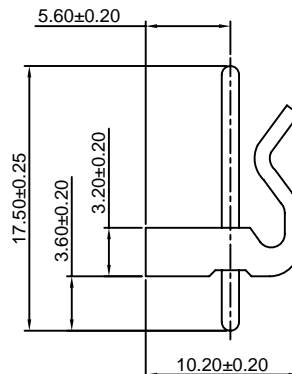
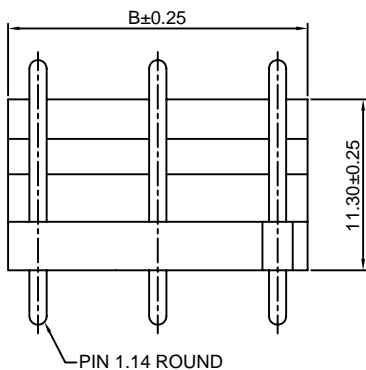
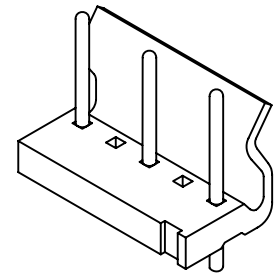
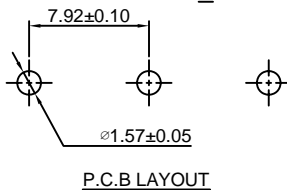
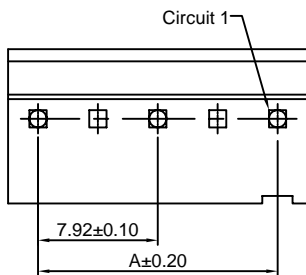
Reference Informations:

- *Material:Pin:Brass/Tin over Nickel
Insulator:Nylon 66,UL94V-2
- *Mates with CJT A3961H-XP(-2) or A3964H-XP, A3964H-XP-A,A3964H-XP-C series Housing
- *Color:Natural

Ordering Information:

A3961WV-XP-R-A - *** - **
1 2 3

- 1.Part No.
- 2.Material:
(blank):Nylon 66,UL94V-2
V0:Nylon 66,UL94V-0
GWT:Nylon 66,UL94V-0,GWT 750°C
- 3.Finish:
(blank):Tin over Nickel
G:Gold over Nickel



Ordering Information & Dimensions:

| PART NO. | Dimensions | |
|----------|------------|-------|
| | A | B |
| 3P | 7.92 | 11.88 |
| 5P | 15.84 | 19.80 |
| 7P | 23.76 | 27.72 |
| 9P | 31.68 | 35.64 |
| 11P | 39.60 | 43.56 |
| 13P | 47.52 | 51.48 |
| 15P | 55.44 | 59.40 |
| 17P | 63.36 | 67.32 |
| 19P | 71.28 | 75.24 |

Unit: mm

A3961WVA-XP-R-A

7.92mm pitch 180° Wafer

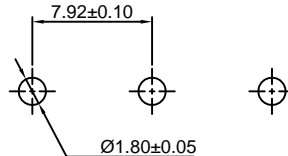
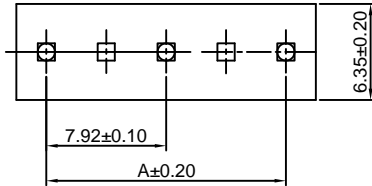
Reference Informations:

- *Material:Pin:Brass/Tin over Nickel
Insulator:Nylon 66,UL94V-2
- *Mates with CJT A3961H-XP-2 or A3964H-XP, A3964H-XP-A,A3964H-XP-C series Housing
- *Color:Natural

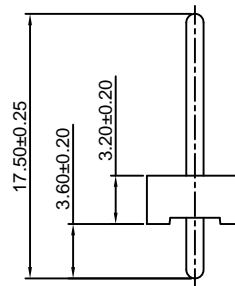
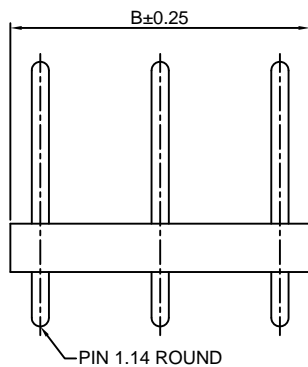
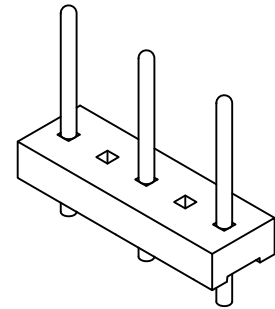
Ordering Information:

A3961WVA-XP-R-A - *** - **
1 2 3

- 1.Part No.
- 2.Material:
(blank):Nylon 66,UL94V-2
V0:Nylon 66,UL94V-0
GWT:Nylon 66,UL94V-0,GWT 750°C
- 3.Finish:
(blank):Tin over Nickel
G:Gold over Nickel



P.C.B LAYOUT



Ordering Information & Dimensions:

| PART NO. | Dimensions | |
|----------|------------|-------|
| | A | B |
| 3P | 7.92 | 11.88 |
| 5P | 15.84 | 19.80 |
| 7P | 23.76 | 27.72 |
| 9P | 31.68 | 35.64 |
| 11P | 39.60 | 43.56 |
| 13P | 47.52 | 51.48 |
| 15P | 55.44 | 59.40 |
| 17P | 63.36 | 67.32 |
| 19P | 71.28 | 75.24 |

Unit: mm

A3961WVB-XP

3.96mm pitch 180° Wafer

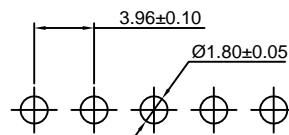
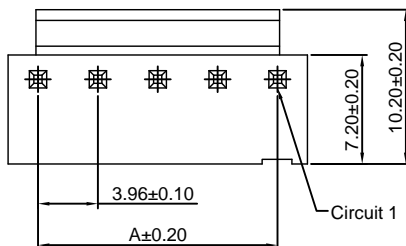
Reference Informations:

- *Material:Pin:Brass/Tin over Nickel
Insulator:Nylon 66,UL94V-0
- *Mates with CJT A3961H-XP(-2/-3) or A3964H-XP, A3964H-XP-A,A3964H-XP-B,A3964H-XP-C series Housing
- *Color:White

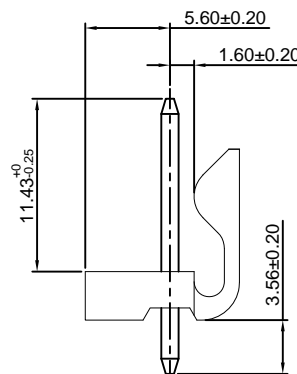
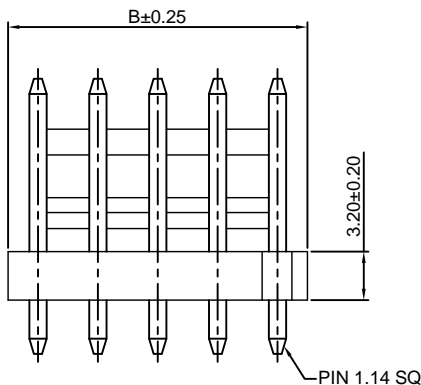
Ordering Information:

A3961WVB-XP - *** - **
1 2 3

- 1.Part No.
- 2.Material:
(blank):Nylon 66,UL94V-0
GWT:Nylon 66,UL94V-0,GWT 750°C
- 3.Finish:
(blank):Tin over Nickel
G:Gold over Nickel



P.C.B LAYOUT



Ordering Information & Dimensions:

| PART NO. | Dimensions | |
|----------|------------|-------|
| | A | B |
| 2P | 3.96 | 7.92 |
| 3P | 7.92 | 11.88 |
| 4P | 11.88 | 15.84 |
| 5P | 15.84 | 19.80 |
| 6P | 19.80 | 23.76 |
| 7P | 23.76 | 27.72 |
| 8P | 27.72 | 31.68 |
| 9P | 31.68 | 35.64 |
| 10P | 35.64 | 39.60 |
| 11P | 39.60 | 43.56 |
| 12P | 43.56 | 47.52 |
| 13P | 47.52 | 51.48 |
| 14P | 51.48 | 55.44 |
| 15P | 55.44 | 59.40 |
| 16P | 59.40 | 63.36 |
| 17P | 63.36 | 67.32 |
| 18P | 67.32 | 71.28 |
| 19P | 71.28 | 75.24 |
| 20P | 75.24 | 79.20 |

Unit: mm

A3961WVB-F-XP

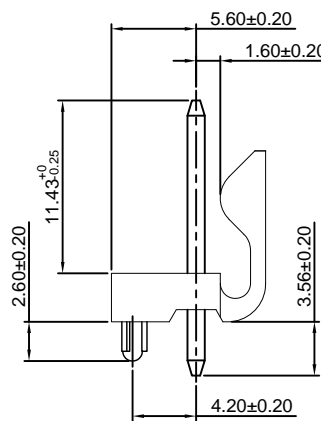
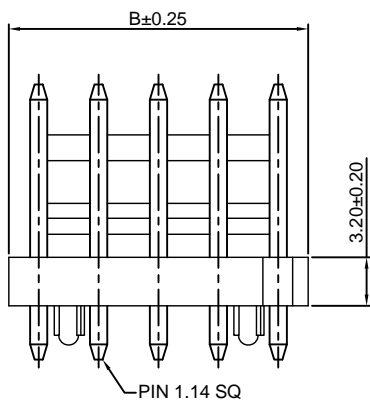
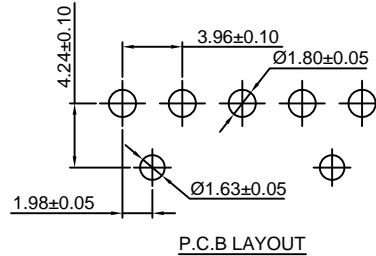
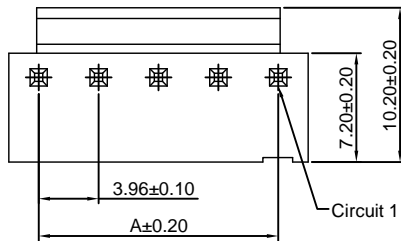
3.96mm pitch 180° Wafer

Reference Informations:

- *Material: Pin: Brass/Tin over Nickel
Insulator: Nylon 66, UL94V-0
- *Mates with CJT A3961H-XP(-2/-3) or A3964H-XP, A3964H-XP-A, A3964H-XP-B, A3964H-XP-C series Housing
- *Color: White

Ordering Information:

- A3961WVB-F-XP - *** - **
- | | | |
|---|---|---|
| 1 | 2 | 3 |
|---|---|---|
- Part No.
 - Material:
(blank): Nylon 66, UL94V-0
GWT: Nylon 66, UL94V-0, GWT 750°C
 - Finish:
(blank): Tin over Nickel
G: Gold over Nickel



Ordering Information & Dimensions:

| PART NO. | Dimensions | |
|----------|------------|-------|
| | A | B |
| 2P | 3.96 | 7.92 |
| 3P | 7.92 | 11.88 |
| 4P | 11.88 | 15.84 |
| 5P | 15.84 | 19.80 |
| 6P | 19.80 | 23.76 |
| 7P | 23.76 | 27.72 |
| 8P | 27.72 | 31.68 |
| 9P | 31.68 | 35.64 |
| 10P | 35.64 | 39.60 |
| 11P | 39.60 | 43.56 |
| 12P | 43.56 | 47.52 |
| 13P | 47.52 | 51.48 |
| 14P | 51.48 | 55.44 |
| 15P | 55.44 | 59.40 |
| 16P | 59.40 | 63.36 |
| 17P | 63.36 | 67.32 |
| 18P | 67.32 | 71.28 |
| 19P | 71.28 | 75.24 |
| 20P | 75.24 | 79.20 |

Unit: mm

A3961WRB-XP

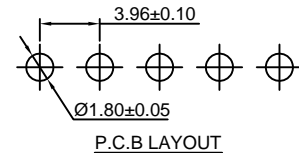
3.96mm pitch 90° Wafer

Reference Informations:

- *Material: Pin: Brass/Tin over Nickel
Insulator: Nylon 66, UL94V-0
- *Mates with CJT A3961H-XP(-2/-3) or A3964H-XP, A3964H-XP-A, A3964H-XP-B, A3964H-XP-C series Housing
- *Color: White

Ordering Information:

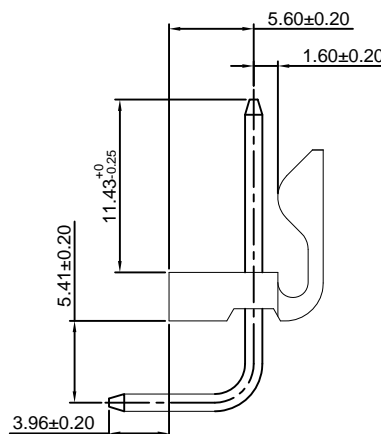
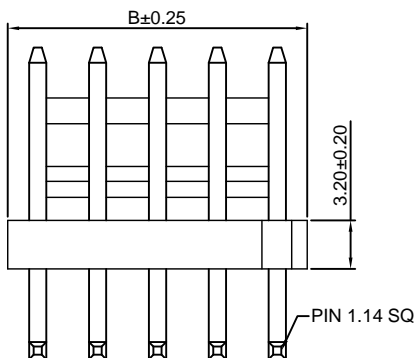
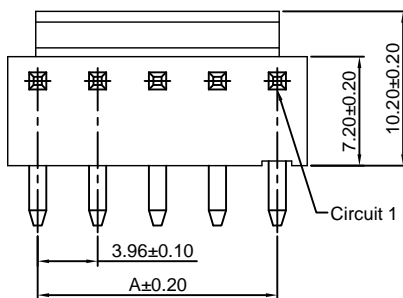
- A3961WRB-XP - *** - ** - **
- | | | | |
|---|---|---|---|
| 1 | 2 | 3 | 4 |
|---|---|---|---|
- Part No.
 - Material:
(blank): Nylon 66, UL94V-0
GWT: Nylon 66, UL94V-0, GWT 750°C
 - Color:
(blank): White
BK: Black
 - Finish:
(blank): Tin over Nickel
G: Gold over Nickel



Ordering Information & Dimensions:

| PART NO. | Dimensions | |
|----------|------------|-------|
| | A | B |
| 2P | 3.96 | 7.92 |
| 3P | 7.92 | 11.88 |
| 4P | 11.88 | 15.84 |
| 5P | 15.84 | 19.80 |
| 6P | 19.80 | 23.76 |
| 7P | 23.76 | 27.72 |
| 8P | 27.72 | 31.68 |
| 9P | 31.68 | 35.64 |
| 10P | 35.64 | 39.60 |
| 11P | 39.60 | 43.56 |
| 12P | 43.56 | 47.52 |
| 13P | 47.52 | 51.48 |
| 14P | 51.48 | 55.44 |
| 15P | 55.44 | 59.40 |
| 16P | 59.40 | 63.36 |
| 17P | 63.36 | 67.32 |
| 18P | 67.32 | 71.28 |
| 19P | 71.28 | 75.24 |
| 20P | 75.24 | 79.20 |
| 21P | 79.20 | 83.16 |
| 22P | 83.16 | 87.12 |
| 23P | 87.12 | 91.08 |
| 24P | 91.08 | 95.04 |

Unit: mm



A3961WRB-F-XP

3.96mm pitch 90° Wafer

Reference Informations:

*Material:Pin:Brass/Tin over Nickel
Insulator:Nylon 66,UL94V-0

*Mates with CJT A3961H-XP(-2/-3) or A3964H-XP, A3964H-XP-A,A3964H-XP-B,A3964H-XP-C series Housing

*Color:White

Ordering Information:

A3961WRB-F-XP - *** - **
1 2 3

1.Part No.

2.Material:

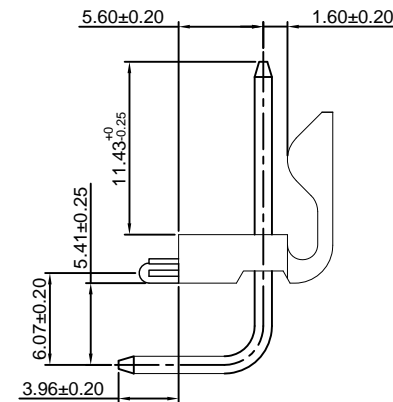
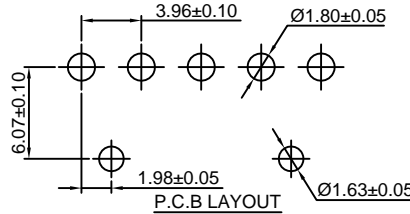
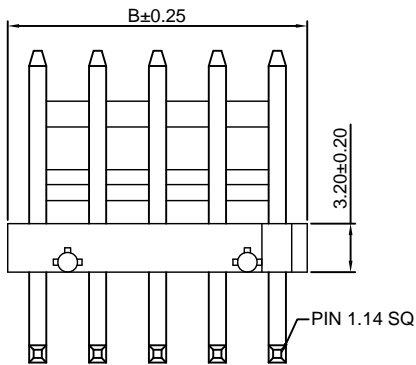
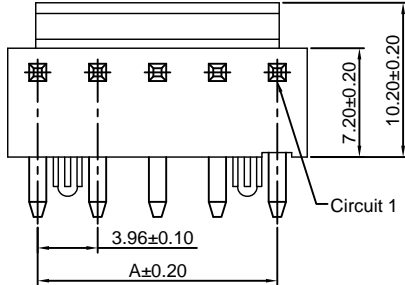
(blank):Nylon 66,UL94V-0

GWT:Nylon 66,UL94V-0,GWT 750°C

3.Finish:

(blank):Tin over Nickel

G:Gold over Nickel



Ordering Information & Dimensions:

| PART NO. | Dimensions | |
|----------|------------|-------|
| | A | B |
| 2P | 3.96 | 7.92 |
| 3P | 7.92 | 11.88 |
| 4P | 11.88 | 15.84 |
| 5P | 15.84 | 19.80 |
| 6P | 19.80 | 23.76 |
| 7P | 23.76 | 27.72 |
| 8P | 27.72 | 31.68 |
| 9P | 31.68 | 35.64 |
| 10P | 35.64 | 39.60 |
| 11P | 39.60 | 43.56 |
| 12P | 43.56 | 47.52 |
| 13P | 47.52 | 51.48 |
| 14P | 51.48 | 55.44 |
| 15P | 55.44 | 59.40 |
| 16P | 59.40 | 63.36 |
| 17P | 63.36 | 67.32 |
| 18P | 67.32 | 71.28 |
| 19P | 71.28 | 75.24 |
| 20P | 75.24 | 79.20 |
| 21P | 79.20 | 83.16 |
| 22P | 83.16 | 87.12 |
| 23P | 87.12 | 91.08 |
| 24P | 91.08 | 95.04 |

Unit: mm

A3961WRB-F-L-XP

3.96mm pitch 90° Wafer

Reference Informations:

*Material:Pin:Brass/Tin over Nickel
Insulator:Nylon 66,UL94V-0

*Mates with CJT A3961H-XP(-2/-3) or A3964H-XP, A3964H-XP-A,A3964H-XP-B,A3964H-XP-C series Housing

*Color:White

Ordering Information:

A3961WRB-F-L-XP - *** - **
1 2 3

1.Part No.

2.Material:

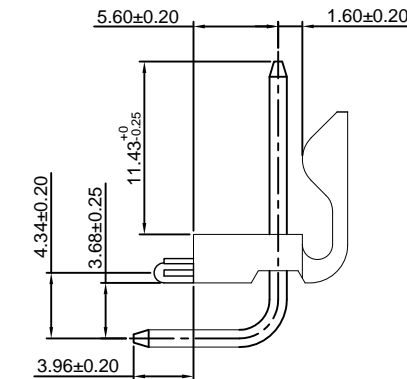
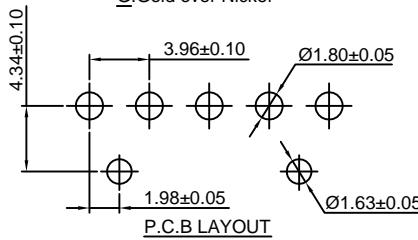
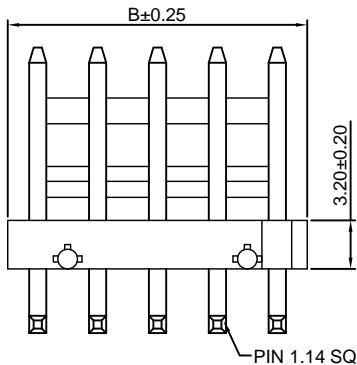
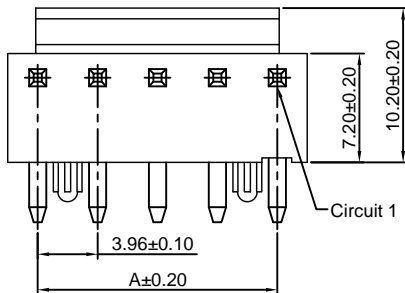
(blank):Nylon 66,UL94V-0

GWT:Nylon 66,UL94V-0,GWT 750°C

3.Finish:

(blank):Tin over Nickel

G:Gold over Nickel



Ordering Information & Dimensions:

| PART NO. | Dimensions | |
|----------|------------|-------|
| | A | B |
| 2P | 3.96 | 7.92 |
| 3P | 7.92 | 11.88 |
| 4P | 11.88 | 15.84 |
| 5P | 15.84 | 19.80 |
| 6P | 19.80 | 23.76 |
| 7P | 23.76 | 27.72 |
| 8P | 27.72 | 31.68 |
| 9P | 31.68 | 35.64 |
| 10P | 35.64 | 39.60 |
| 11P | 39.60 | 43.56 |
| 12P | 43.56 | 47.52 |
| 13P | 47.52 | 51.48 |
| 14P | 51.48 | 55.44 |
| 15P | 55.44 | 59.40 |
| 16P | 59.40 | 63.36 |
| 17P | 63.36 | 67.32 |
| 18P | 67.32 | 71.28 |
| 19P | 71.28 | 75.24 |
| 20P | 75.24 | 79.20 |
| 21P | 79.20 | 83.16 |
| 22P | 83.16 | 87.12 |
| 23P | 87.12 | 91.08 |
| 24P | 91.08 | 95.04 |

Unit: mm

A3961WVC-XP

3.96mm pitch 180° Wafer

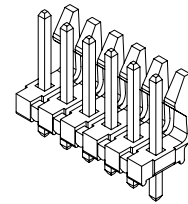
Reference Informations:

- *Material: Pin: Brass/Tin over Nickel
Insulator: Nylon 66, UL94V-0
- *Mates with CJT A3961H-XP(-2) or A3964H-XP, A3964H-XP-A, A3964H-XP-C series Housing
- *Color: Black

Ordering Information:

A3961WVC-XP - *** - *** - ***
1 2 3 4

- Part No.
- Material:
(blank): Nylon 66, UL94V-0
V2: Nylon 66, UL94V-2
GWT: Nylon 66, UL94V-0, GWT 750°C
- Finish
(blank): Tin over Nickel
G: Gold over Nickel (1u")
G15: Gold over Nickel (15u")
G20: Gold over Nickel (20u")
G30: Gold over Nickel (30u")
- Size (P, M): See ①

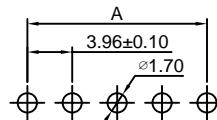
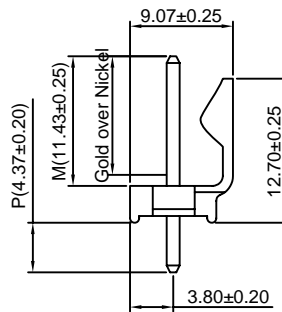
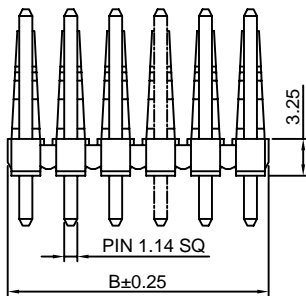
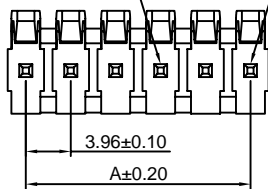


Ordering Information & Dimensions:

| PART NO. | Dimensions | |
|----------|------------|-------|
| | A | B |
| 2P | 3.96 | 7.16 |
| 3P | 7.92 | 11.12 |
| 4P | 11.88 | 15.08 |
| 5P | 15.84 | 19.04 |
| 6P | 19.80 | 23.00 |
| 7P | 23.76 | 26.96 |
| 8P | 27.72 | 30.92 |
| 9P | 31.68 | 34.88 |
| 10P | 35.64 | 38.84 |
| 11P | 39.60 | 42.80 |
| 12P | 43.56 | 46.76 |
| 13P | 47.52 | 50.72 |
| 14P | 51.48 | 54.68 |
| 15P | 55.44 | 58.64 |
| 16P | 59.40 | 62.60 |
| 17P | 63.36 | 66.56 |
| 18P | 67.32 | 70.52 |
| 19P | 71.28 | 74.48 |
| 20P | 75.24 | 78.44 |
| 21P | 79.20 | 82.40 |
| 22P | 83.16 | 86.36 |
| 23P | 87.12 | 90.32 |
| 24P | 91.08 | 94.28 |

Unit: mm

Optional Voided CKT Circuit 1



P.C.B LAYOUT

Note: ①

| PART NO. | P(mm) | M(mm) | PART NO. | P(mm) | M(mm) |
|----------|-------|-------|----------|-------|-------|
| P44M114 | 4.37 | 11.43 | P115M114 | 11.53 | 11.43 |
| P32M114 | 3.18 | 11.43 | P32M133 | 3.18 | 13.28 |
| P25M133 | 2.51 | 13.28 | P74M114 | 7.42 | 11.43 |
| P44M122 | 4.37 | 12.19 | P123M122 | 12.34 | 12.19 |

A3961WRC-XP

3.96mm pitch 90° Wafer

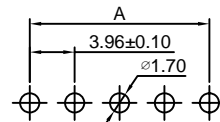
Reference Informations:

- *Material: Pin: Brass/Tin over Nickel
Insulator: Nylon 66, UL94V-0
- *Mates with CJT A3961H-XP(-2) or A3964H-XP, A3964H-XP-A, A3964H-XP-C series Housing
- *Color: Black

Ordering Information:

A3961WRC-XP - *** - *** - ***
1 2 3 4

- Part No.
- Material:
(blank): Nylon 66, UL94V-0
V2: Nylon 66, UL94V-2
GWT: Nylon 66, UL94V-0, GWT 750°C
- Finish
(blank): Tin over Nickel
G: Gold over Nickel (1u")
G15: Gold over Nickel (15u")
G20: Gold over Nickel (20u")
G30: Gold over Nickel (30u")
- Size (P, M, Y): See ①



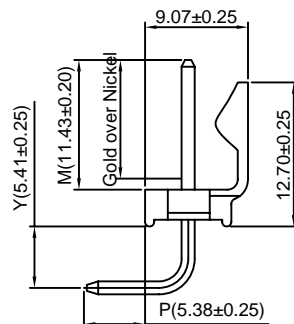
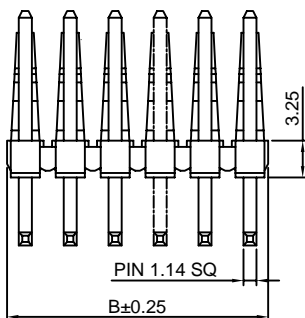
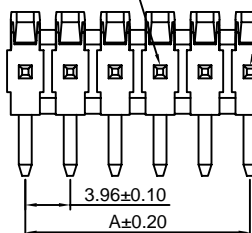
P.C.B LAYOUT

Ordering Information & Dimensions:

| PART NO. | Dimensions | |
|----------|------------|-------|
| | A | B |
| 2P | 3.96 | 7.16 |
| 3P | 7.92 | 11.12 |
| 4P | 11.88 | 15.08 |
| 5P | 15.84 | 19.04 |
| 6P | 19.80 | 23.00 |
| 7P | 23.76 | 26.96 |
| 8P | 27.72 | 30.92 |
| 9P | 31.68 | 34.88 |
| 10P | 35.64 | 38.84 |
| 11P | 39.60 | 42.80 |
| 12P | 43.56 | 46.76 |
| 13P | 47.52 | 50.72 |
| 14P | 51.48 | 54.68 |
| 15P | 55.44 | 58.64 |
| 16P | 59.40 | 62.60 |
| 17P | 63.36 | 66.56 |
| 18P | 67.32 | 70.52 |
| 19P | 71.28 | 74.48 |
| 20P | 75.24 | 78.44 |
| 21P | 79.20 | 82.40 |
| 22P | 83.16 | 86.36 |
| 23P | 87.12 | 90.32 |
| 24P | 91.08 | 94.28 |

Unit: mm

Optional Voided CKT Circuit 1



Note: ①

| PART NO. | P(mm) | M(mm) | Y(mm) | PART NO. | P(mm) | M(mm) | Y(mm) |
|-------------|-------|-------|-------|------------|-------|-------|-------|
| P54M114Y54 | 5.38 | 11.43 | 5.41 | P35M114Y56 | 3.45 | 11.43 | 5.61 |
| P35M133Y54 | 3.45 | 13.28 | 5.41 | P35M114Y54 | 3.45 | 11.43 | 5.41 |
| P54M133Y55 | 5.38 | 13.28 | 5.51 | P47M114Y54 | 4.69 | 11.43 | 5.41 |
| P150M127Y54 | 15.04 | 12.67 | 5.41 | | | | |

X-ON Electronics

Largest Supplier of Electrical and Electronic Components

Click to view similar products for [Headers & Wire Housings](#) category:

Click to view products by [Changjiang](#) manufacturer:

Other Similar products are found below :

[95000-104TRLF](#) [10135584-644402LF](#) [DF62W-EP2022PCA](#) [95000-106TRLF](#) [DF62W-2022SCA](#) [DF62W-EP2022PC](#) [2203348](#) [DF62W-2022SC](#) [1084018](#) [1029039](#) [1084017](#) [802-10-012-10-002000](#) [1112640](#) [1112639](#) [891-007-9SS-BST1T](#) [000-34000](#) [0008550134](#) [0009482033](#) [0009507031](#) [57102-F02-18ULF](#) [57102-S06-03LF](#) [57202-S52-04LF](#) [PCN6-15S-2.5E](#) [0039019024](#) [58102-G61-06LF](#) [582553-1](#) [0009485154](#) [0009508121](#) [0022285053](#) [0050291907](#) [018731A](#) [LY20-4P-DT1-P1E-BR](#) [02.125.8002.8](#) [60101931](#) [60598-1 \(Cut Strip\)](#) [M1625-3R/100](#) [61062-3](#) [61082-181009](#) [CSU011177004](#) [636-1427](#) [638009-1](#) [641938-9](#) [641991-4](#) [644168-1](#) [644827-2](#) [647662-1](#) [65039-019ELF](#) [65692-001LF](#) [65781-018](#) [65781-047](#)