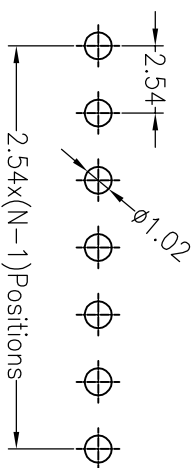
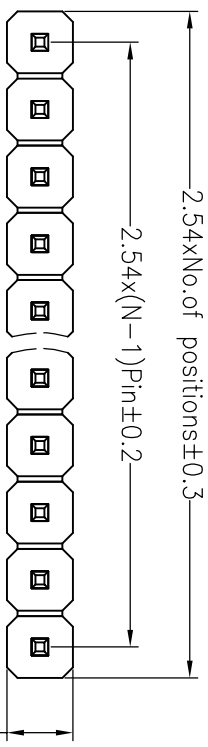


SPECIFICATIONS

Rated Current: 3.0AMP
 Contact Resistance: 20mΩ Max
 Withstand Voltage: 1000V AC/DC
 Insulation Resistance: 1000MΩ Min
 Operation Temperature: -40°C to +105°C

Contact Material: Brass
 Contact Plating: Au Over Ni
 Insulator Material: Polyester (UL94V-0)
 Standard: PA6T
 Max. Processing Temp: 230°C for 30-60 seconds
 (260°C for 10 seconds)

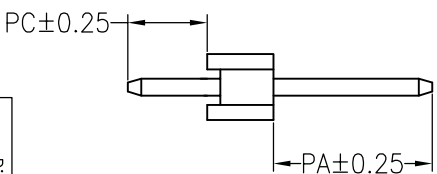
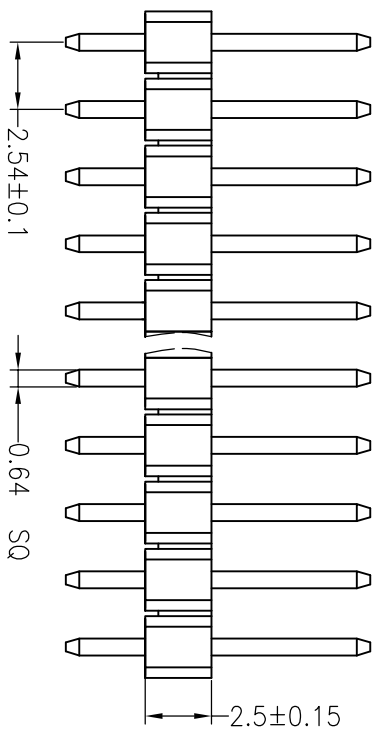


Recommended P.C.B Layout (Top Side)
 (PCB BOARD TOLERANCE ±0.05)

Ordering Information

1225 11 XX X N XX S XXX X01

No. of Pins Per Row 1-40
 Insulator Material Option
 A=BK-PBT
 B=BK-PA66
 C=BK-PA6T
 D=BK-PA46
 E=BK-PA9T
 F=BK-LCP
 Contact Plating
 G0:Gold Flash
 G1:3U" Gold
 G2:5U" Gold
 G3:10U" Gold
 G4:15U" Gold
 G5:30U" Gold
 S0:Gold Flash/Tin
 SW:Tin
 Packing
 0=PE Bag
 A=Troy
 T=Tube



| Dimension antitheses list | | | |
|---------------------------|------|------|------|
| ITEM | PA | PC | L |
| Standard | 6.00 | 3.00 | 11.5 |
| Alternate | | | |

| OPERATION | | DRAW | | SCALE | | FIT | | TITLE: | |
|-----------|------------|--------------------------|----------|-------|-----|--|----|----------|---------------------|
| X.X | ±0.30 | YYuSheng | 15.01.25 | UNIT | mm | SIZE | A4 | PART NO. | 122511XXXXXXSXXXX01 |
| X.XX | ±0.20 | CHECK | | SHEET | 1/1 | PART NO. 122511XXXXXXSXXXX01 | | | |
| X.XXX | ±0.10 | | | PROJ. | | TITLE: 2.54x2.5mm Pin Header Single 180° | | | |
| Angle | ±3° | APPROVE | | | | | | | |
| DIM | TOL | CHANGE | | | | | | | |
| REV | DATE | MODIFICATION DESCRIPTION | | | | | | | |
| A0 | 2015.01.25 | NEW DRAWING | | | | | | | |
| 1 | | | | | | | | | |

JIN 深圳市锦凌电子有限公司
 SHENZHEN JINLING ELECTRONIC CO.,LTD
 Tel: 86-755-2997-5806/5802 Fax: 86-755-2997-5892

X-ON Electronics

Largest Supplier of Electrical and Electronic Components

Click to view similar products for [Headers & Wire Housings](#) category:

Click to view products by [JILN](#) manufacturer:

Other Similar products are found below :

[95000-104TRLF](#) [10135584-644402LF](#) [DF62W-EP2022PCA](#) [95000-106TRLF](#) [DF62W-2022SCA](#) [DF62W-EP2022PC](#) [2203348](#) [DF62W-2022SC](#) [1084018](#) [1029039](#) [1084017](#) [802-10-012-10-002000](#) [1112640](#) [1112639](#) [891-007-9SS-BST1T](#) [000-34000](#) [0008550134](#) [0009482033](#) [0009507031](#) [57102-F02-18ULF](#) [57102-S06-03LF](#) [57202-S52-04LF](#) [PCN6-15S-2.5E](#) [0039019024](#) [58102-G61-06LF](#) [582553-1](#) [0009485154](#) [0009508121](#) [0022285053](#) [0050291907](#) [018731A](#) [LY20-4P-DT1-P1E-BR](#) [02.125.8002.8](#) [60101931](#) [60598-1 \(Cut Strip\)](#) [M1625-3R/100](#) [61062-3](#) [61082-181009](#) [CSU011177004](#) [636-1427](#) [638009-1](#) [641938-9](#) [641991-4](#) [644168-1](#) [644827-2](#) [647662-1](#) [65039-019ELF](#) [65692-001LF](#) [65781-018](#) [65781-047](#)