

REV.	ECH. NO.	APPD.
A		

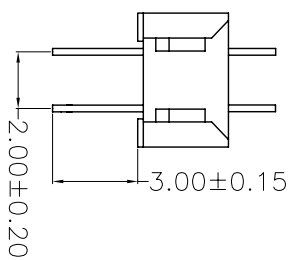
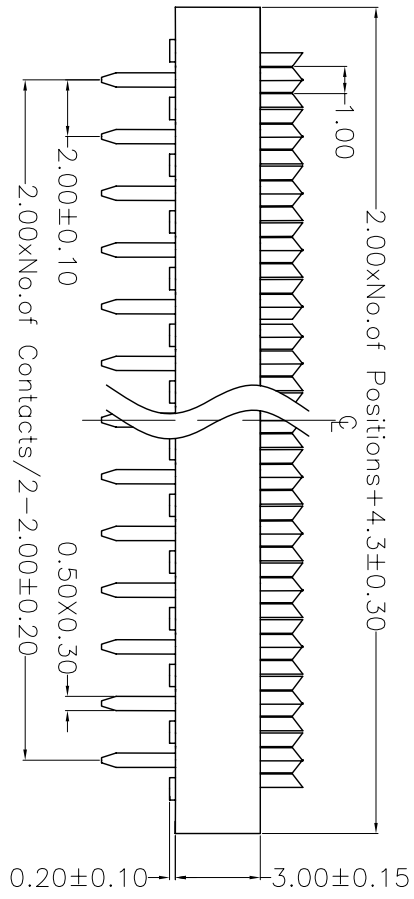
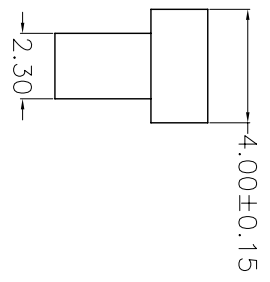
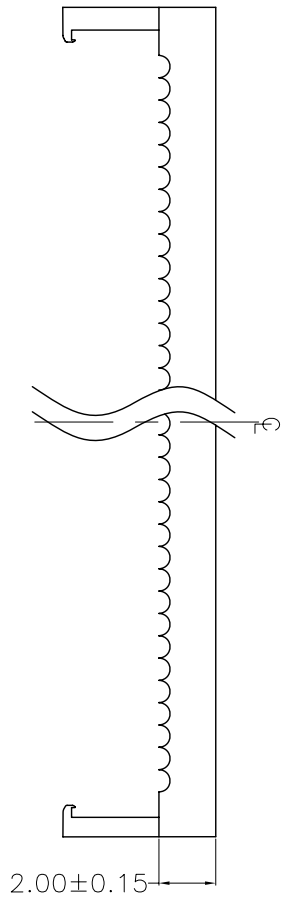
**NOTES:**

Current Rating: 1AMP  
 Withstand Voltage: 1000V AC/Minute  
 Contact Resistance: 20mΩ Max  
 Insulation Resistance: 1000MΩ Min  
 Operation Temperature: -40°C to +105°C  
 Contact Material: Phosphor Bronze  
 Contact plating: Au Or Sn Over Ni  
 Insulator Material: Polyester(UL94V-0)  
 Standard: PBT+30%G.F  
 Cable Size: 1.00mm Pitch 30AWG

# Ordering Information

## MTFD20-XXP

- No. of Pins
- 10P 34P
  - 12P 36P
  - 14P 40P
  - 16P 44P
  - 18P 50P
  - 20P 60P
  - 22P 62P
  - 24P 64P
  - 26P 68P
  - 30P



X. ± 0.30	X.° ± 5°	UNITS mm	NAME (INTENDED USE)	MINTRON CO., LTD.
X ± 0.20	X° ± 2°	MAT'L	PART NO. (INTENDED USE)	
.XX ± 0.10	.XX° ± 1°	FINISH	APPD: SUNNY	TITLE: 2.00 DIP PLUG CONNECTOR
.XXX ± 0.05	.XXX° ± 0.5°		CHKD: LISA	DWG NO.: MTFD20-XXP
DIP PULG CONNECTOR		QTY	DR: ZOE	SCALE SHEET REV.
			2006-11-28	1/1 1/1 A

## X-ON Electronics

Largest Supplier of Electrical and Electronic Components

*Click to view similar products for [Headers & Wire Housings](#) category:*

*Click to view products by [MINTRON](#) manufacturer:*

Other Similar products are found below :

[95000-104TRLF](#) [10135584-644402LF](#) [DF62W-EP2022PCA](#) [95000-106TRLF](#) [DF62W-2022SCA](#) [DF62W-EP2022PC](#) [2203348](#) [DF62W-2022SC](#) [1084018](#) [1029039](#) [1084017](#) [802-10-012-10-002000](#) [1112640](#) [1112639](#) [891-007-9SS-BST1T](#) [000-34000](#) [0008550134](#) [0009482033](#) [0009507031](#) [57102-F02-18ULF](#) [57102-S06-03LF](#) [57202-S52-04LF](#) [PCN6-15S-2.5E](#) [0039019024](#) [58102-G61-06LF](#) [582553-1](#) [0009485154](#) [0009508121](#) [0022285053](#) [0050291907](#) [018731A](#) [LY20-4P-DT1-P1E-BR](#) [02.125.8002.8](#) [60101931](#) [60598-1 \(Cut Strip\)](#) [M1625-3R/100](#) [61062-3](#) [61082-181009](#) [CSU011177004](#) [636-1427](#) [638009-1](#) [641938-9](#) [641991-4](#) [644168-1](#) [644827-2](#) [647662-1](#) [65039-019ELF](#) [65692-001LF](#) [65781-018](#) [65781-047](#)