

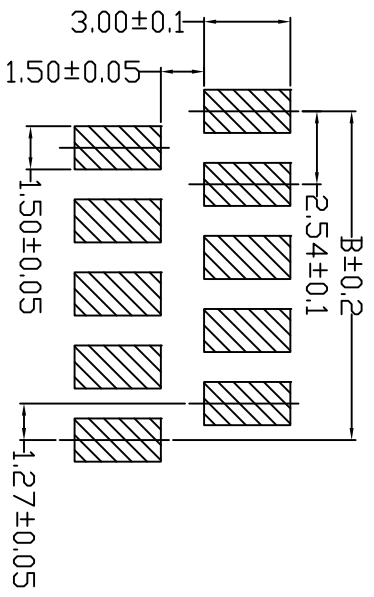
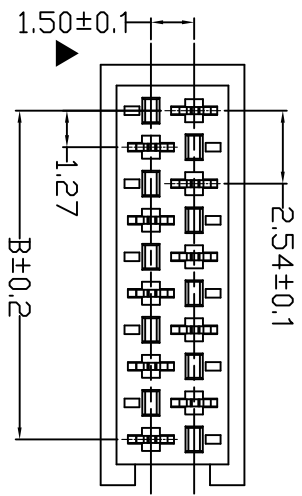
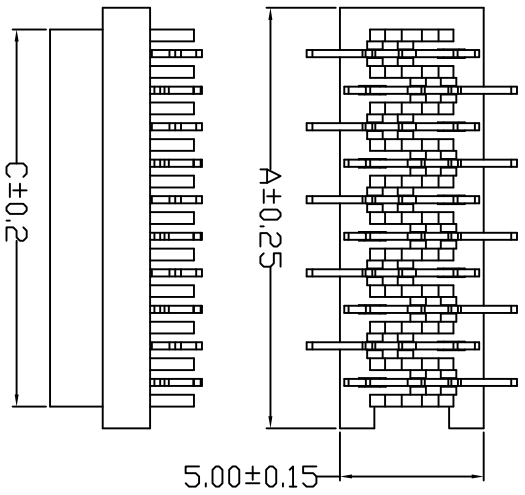
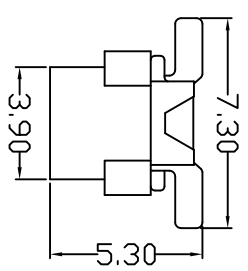
REV.	EQN. NO.	APPD.
A		

Material:

Insulator: Glass filled NY46 UL94V-0
 Contacts: Brass / Phosphor Bronze T=0.25
 Plating: Tin plated

Electrical Characteristics:

Contact Resistance: 20mΩmax. at DC 100mA
 Insulator Resistance: 1000MΩmin. at 500V DC
 Withstanding Voltage: 500V AC/rms 50Hz For 1 minute
 Current Rating: 1 AMP
 Operating Temperature: -40°C~+105°C



Ordering Information:

MTMR39-XX X X -22
 M:Male
 F:Female
 No. of Pins
 S: Straight
 R: Right
 M: SMT
 C: Cable

PINS	A	B	C
4	7.00	3.81	5.58
6	9.54	6.35	8.12
8	12.08	8.89	10.66
10	14.62	11.43	13.2
12	17.16	13.97	15.74
14	19.70	16.51	18.28
16	22.24	19.05	20.82
18	24.78	21.59	23.36
20	27.32	24.13	25.9
22	29.86	26.67	28.44
24	32.4	29.21	30.98
26	34.94	31.75	33.52

MINTRON CO., LTD.

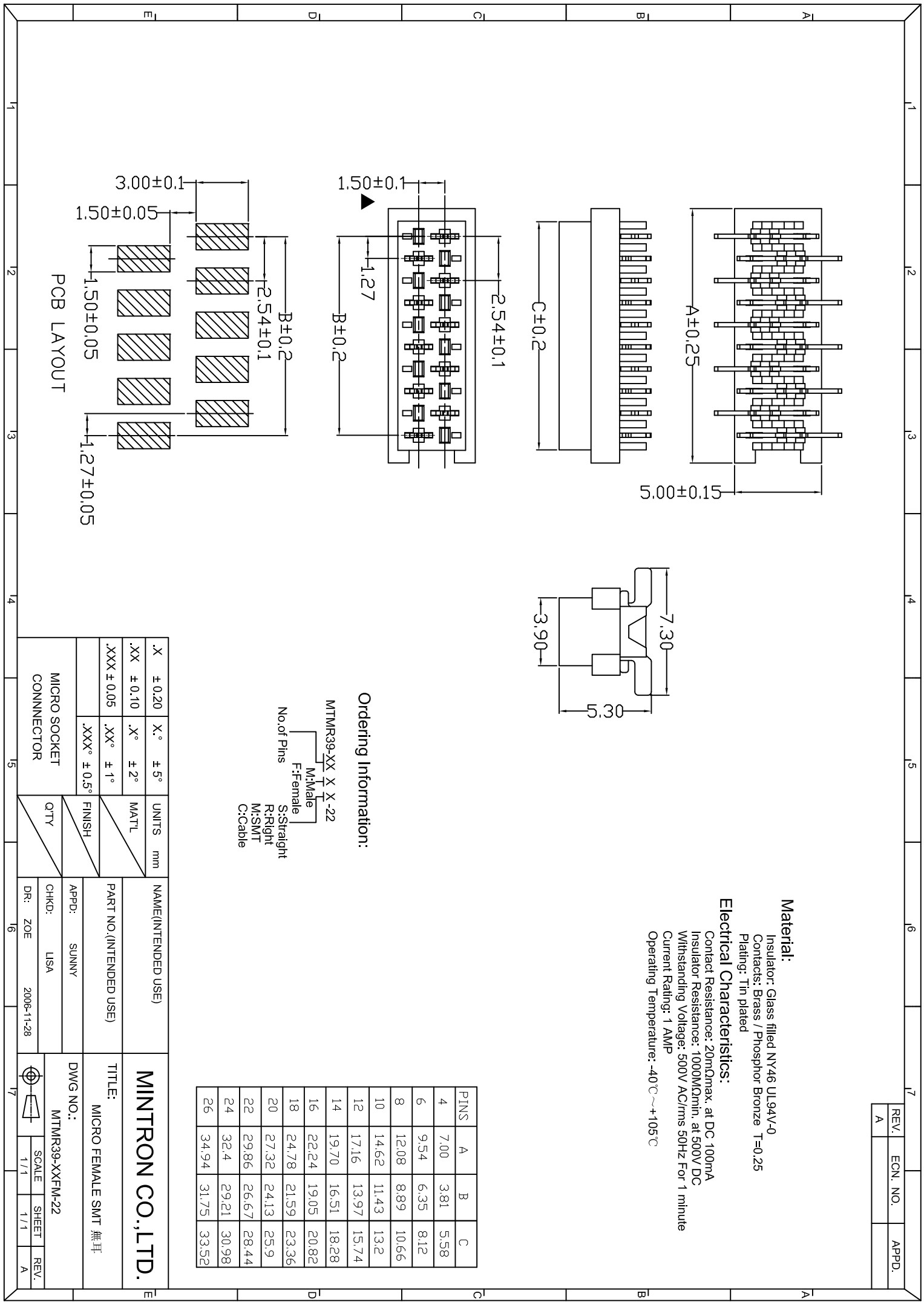
TITLE: MICRO FEMALE SMT 無耳

DWG NO.: MTMR39-XXFM-22

SCALE	SHEET	REV.
1/1	1/1	A

X	±0.20	X°	±5°	UNITS	mm
.XX	±0.10	.X°	±2°	MAT'L	
.XXX	±0.05	.XX°	±1°	FINISH	
		.XXX°	±0.5°	QTY	

NAME (INTENDED USE)	MICRO SOCKET CONNECTOR
PART NO. (INTENDED USE)	
APPD:	SUNNY
CHKD:	USA
DR:	ZOE 2006-11-28



X-ON Electronics

Largest Supplier of Electrical and Electronic Components

Click to view similar products for [Headers & Wire Housings](#) category:

Click to view products by [MINTRON](#) manufacturer:

Other Similar products are found below :

[95000-104TRLF](#) [10135584-644402LF](#) [DF62W-EP2022PCA](#) [95000-106TRLF](#) [DF62W-2022SCA](#) [DF62W-EP2022PC](#) [2203348](#) [DF62W-2022SC](#) [1084018](#) [1029039](#) [1084017](#) [802-10-012-10-002000](#) [1112640](#) [1112639](#) [891-007-9SS-BST1T](#) [000-34000](#) [0008550134](#) [0009482033](#) [0009507031](#) [57102-F02-18ULF](#) [57102-S06-03LF](#) [57202-S52-04LF](#) [PCN6-15S-2.5E](#) [0039019024](#) [58102-G61-06LF](#) [582553-1](#) [0009485154](#) [0009508121](#) [0022285053](#) [0050291907](#) [018731A](#) [LY20-4P-DT1-P1E-BR](#) [02.125.8002.8](#) [60101931](#) [60598-1 \(Cut Strip\)](#) [M1625-3R/100](#) [61062-3](#) [61082-181009](#) [CSU011177004](#) [636-1427](#) [638009-1](#) [641938-9](#) [641991-4](#) [644168-1](#) [644827-2](#) [647662-1](#) [65039-019ELF](#) [65692-001LF](#) [65781-018](#) [65781-047](#)