

ALUMINUM ELECTROLYTIC CAPACITORS SPECIFICATION SHEET

RoHS Compliant Part

CUSTOMER PART No.		
Rubycon PART No.	330 FW 102 A OLY C 11×30	
DRAWING No.	REE - 073981	ISSUE No. 1
ISSUE DATE	5 February 2019	



RUBYCON CORPORATION

ENGINEERING DIVISION
ELECTROLYTIC CAPACITOR DESIGN DEPT.

1938-1, NISIMINOWA, INA-SHI, NAGANO-KEN, JAPAN

TEL No. 0265-72-7116

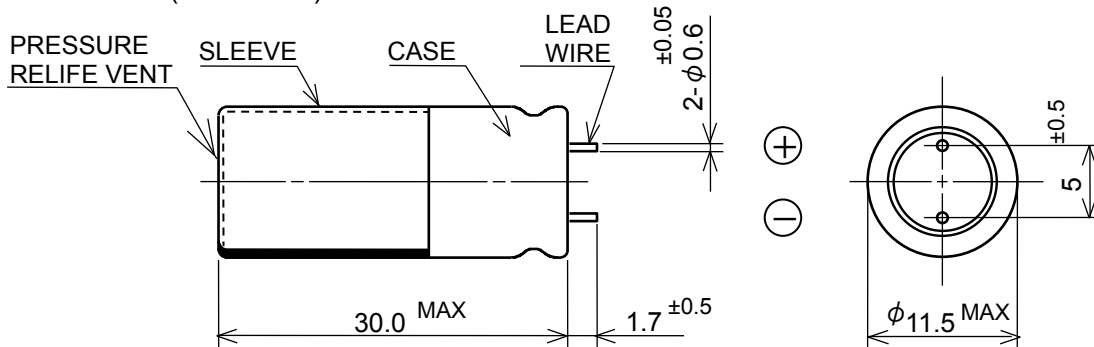
FAX No. 0265-73-3380

DESIGN	KOICHI WADA
	<i>K. Wada</i>
CHECK	
APPROVAL	HIROKAZU HORIKAWA
	<i>H. Horikawa</i>

Fixed aluminium electrolytic capacitors
with non-solid electrolyte
for use in electronic flash equipment

Style	CE 04
Customer Part Number	
Operating Temperature Range	-20°C ~ +60°C
The General Standard	JEITA RC-2365B

1. Dimensions (UNIT : mm)



NAME	SLEEVE	CASE	SEAL	LEAD WIRE
MATERIAL	PET	A α	Rubber	CP Wire
APPEARANCE	Black			Tin plating

2. Electrical Performance

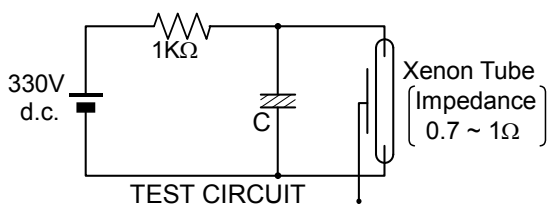
RUBYCON CATALOGUE NUMBER	NOMINAL CAPACITANCE (MFD)	CAPACITANCE TOLERANCE (%)	RATED VOLTAGE (V d.c.)	SURGE VOLTAGE (V d.c.)	LEAKAGE CURRENT (μ A/330V.5min.) MAX.	D.F. (%) MAX
330 FW 102	102	-10 ~ +20	330	350	102	6

Condition : Measuring Temperature . . . 25°C \pm 2°C
Measuring Frequency 120Hz

3. Marking : Unless otherwise specified, capacitor shall be clearly marked on its body.

- (1) Brand **Rubycon**
- (2) Application PHOTO-FLASH
- (3) Rated Voltage 330V
- (4) Nominal Capacitance 102 μ F
- (5) Polarity
- (6) Lot. No.
- (7) Sleeve Material PET

4. Charge/Discharge Life Test . . . Ambient Temperature: 5°C ~ 35°C



	1 cycle/30sec.	After 5,000 cycles
Capacitance Change		Within \pm 10% of the initial value.
D.F.		Not more than 150% of the specified value.
Leakage Current		Not more than 150% of the specified value.

5. Note (on the use of aluminium electrolytic capacitors)

Guide to application expect the above are described in our catalog and EIAJ RCR-2367C.
EIAJ RCR-2367C : "Safety Application Guide for fixed aluminum electrolytic capacitors for use in electronic equipment." Published by Japan Electronics and Information Technology Industries Association.

Rubycon
RUBYCON CORPORATION

DRAWING No.

REE - 073981

ISSUE No.

1

X-ON Electronics

Largest Supplier of Electrical and Electronic Components

Click to view similar products for [Aluminium Electrolytic Capacitors - Radial Leaded](#) category:

Click to view products by [Rubycon](#) manufacturer:

Other Similar products are found below :

[NRELS102M35V16X16C.140LLF](#) [ESRG160ETC100MD07D](#) [227RZS050M](#) [335CKR250M](#) [476CKH100MSA](#) [477CKR100M](#)
[107CKR010M](#) [107CKH063MSA](#) [RJH-25V222MI9#](#) [RJH-35V221MG5#](#) [B43827A1106M8](#) [RJH-50V221MH6#](#) [EKYA500ELL470MF11D](#)
[B41022A5686M6](#) [ESRG250ELL101MH09D](#) [EKMA160EC3101MF07D](#) [RJB-10V471MG3#](#) [ESMG160ETD221MF11D](#)
[EKZH160ETD152MJ20S](#) [RJH-35V122MJ6#](#) [EGXF630ELL621ML20S](#) [RBD-25V100KE3#N](#) [EKMA350ELL100ME07D](#)
[ESMG160ETD101ME11D](#) [ELXY100ETD102MJ20S](#) [EGXF500ELL561ML15S](#) [EKMG350ETD471MJ16S](#) [35YXA330MEFC10X12.5](#)
[RXW471M1ESA-0815](#) [ELXZ630ELL221MJ25S](#) [ERR1HM1R0D11OT](#) [LPE681M30060FVA](#) [LPL471M22030FVA](#) [HFE221M25030FVA](#)
[LKMD1401H221MF](#) [B41888G6108M000](#) [EKMA160ETD470MF07D](#) [UHW1J102MHD6](#) [EKMG500ETD221MJC5S](#) [LKMK2502W101MF](#)
[LKMD1401H181MF](#) [LKMI2502G820MF](#) [LKMJ2001J122MF](#) [LKML2501C472MF](#) [LKMJ4002C681MF](#) [450MXH330MEFCSN25X45](#)
[450MXK330MA2RFC22X50](#) [63ZLH560MEFCG412.5X30](#) [ELH2DM331O25KT](#) [ELH2DM471P30KT](#)