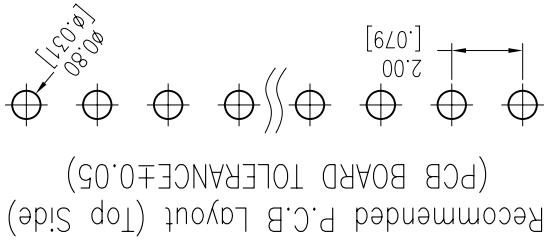
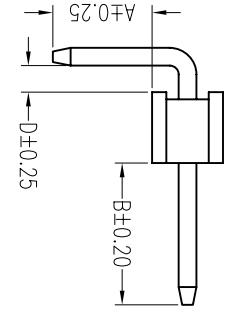
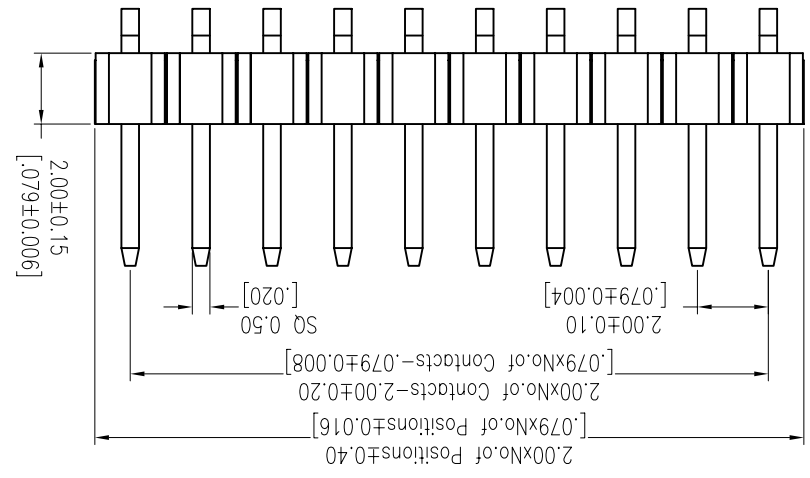
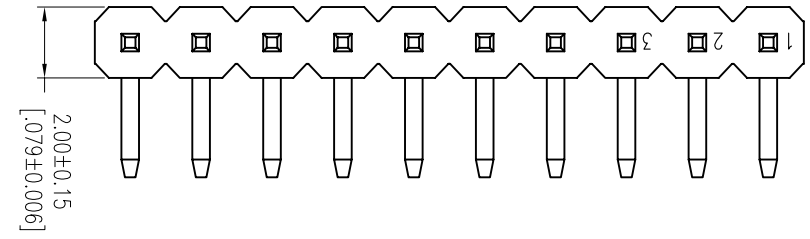
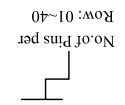


NOTES:
 Rated Current:2.0AMP.
 Contact Resistance:20mΩ Max.
 Withstand Voltage:50V AC/DC
 Insulation Resistance:100MΩ Min.
 Operation Temperature:-40℃ to +105℃
 Contact Material:Brass
 Contact Plating:Au or Sn Over Ni
 Insulator Material:PA9T+30%G.F UL94V-0 BK

Ordering Information

MTP220-11XXR1



Recommended P.C.B Layout (Top Side)
 (PCB BOARD TOLERANCE±0.05)

| Item | Pin Length | A | D | B | Mating |
|-----------|------------|------|------|------|---------------------|
| Standard | 10.50 | 2.80 | 0.75 | 4.00 | 2240 2243 2263 2272 |
| Alternate | | | | | |

| | | | | | | | | | |
|----------------------|--------------|--------|----|-------------------------|-------------------|----------------------|----------|-------------|------------|
| X. ± 0.30 | X. ± 5° | UNITS | mm | NAME (INTENDED USE) | MINTRON CO., LTD. | TITLE: MTP220-11XXR1 | DWG NO.: | DR: ZOE | 2006-11-28 |
| | | | | | | | | CHKD: LISA | |
| X. ± 0.20 | X. ± 2° | MATL | | NAME (INTENDED USE) | MINTRON CO., LTD. | TITLE: MTP220-11XXR1 | DWG NO.: | APPD: SUNNY | |
| .XX ± 0.10 | .XX° ± 1° | FINISH | | PART NO. (INTENDED USE) | | | | CHKD: LISA | |
| .XXX ± 0.05 | .XXX° ± 0.5° | QTY | | | | | | DR: ZOE | 2006-11-28 |
| PIN HEADER CONNECTOR | | | | | | | | SCALE | 1/1 |
| | | | | | | | | SHEET | 1/1 |
| | | | | | | | | REV | A |

| | | |
|------|----------|-------|
| REV. | ECN. NO. | APPD. |
| A | | |

X-ON Electronics

Largest Supplier of Electrical and Electronic Components

Click to view similar products for [Headers & Wire Housings](#) category:

Click to view products by [MINTRON](#) manufacturer:

Other Similar products are found below :

[95000-104TRLF](#) [10135584-644402LF](#) [DF62W-EP2022PCA](#) [95000-106TRLF](#) [DF62W-2022SCA](#) [DF62W-EP2022PC](#) [2203348](#) [DF62W-2022SC](#) [1084018](#) [1029039](#) [1084017](#) [802-10-012-10-002000](#) [1112640](#) [1112639](#) [891-007-9SS-BST1T](#) [000-34000](#) [0008550134](#) [0009482033](#) [0009507031](#) [57102-F02-18ULF](#) [57102-S06-03LF](#) [57202-S52-04LF](#) [PCN6-15S-2.5E](#) [0039019024](#) [58102-G61-06LF](#) [582553-1](#) [0009485154](#) [0009508121](#) [0022285053](#) [0050291907](#) [018731A](#) [LY20-4P-DT1-P1E-BR](#) [02.125.8002.8](#) [60101931](#) [60598-1 \(Cut Strip\)](#) [M1625-3R/100](#) [61062-3](#) [61082-181009](#) [CSU011177004](#) [636-1427](#) [638009-1](#) [641938-9](#) [641991-4](#) [644168-1](#) [644827-2](#) [647662-1](#) [65039-019ELF](#) [65692-001LF](#) [65781-018](#) [65781-047](#)