

Features

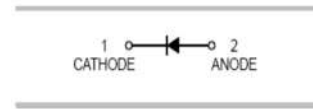
- Low reverse current and low forward voltage.
- High reliability.
- Small surface mounting type.



SOD-123



SOD323



Typical Applications

- For general purpose applications

Mechanical Data

- Case: SOD-123,SOD-323
- Molding compound, UL flammability classification rating 94V-0.
- Terminals: Tin plated leads, solderable per MIL-STD-202, Method 208.

Ordering Information

Part Number	Package	Shipping	Marking Code
B5818WH□	SOD-123	3000/Tape Reel	SKH
B5818WSH□	SOD-323	3000/Tape Reel	SKH
B5819WH□	SOD-123	3000/Tape Reel	SLH
B5819WSH□	SOD-323	3000/Tape Reel	SLH

□: none is for Lead Free package;

“G” is for Halogen Free package.

Maximum Ratings (@T_A=25°C unless otherwise specified)

Parameter	Symbol	B5818W(S)H	B5819W(S)H	Units
Peak Repetitive Reverse Voltage	V _{RRM}	30	40	V
RMS Reverse Voltage	V _{RMS}	21	28	V
Maximum Average Forward Output Current	I _{F(AV)}	1		A
Peak Forward Surge Current,8.3ms Single Half-sine-wave	I _{FSM}	10		A

Thermal Characteristics

Parameter	Symbol	B5818WH/B5819WH	B5818WSH/B5819WSH	Units
Power Dissipation	P _D	500	250	mW
Typical Thermal Resistance per leg	R _{θJA} *	250	500	°C/W
Operating Junction Temperature Range	T _J	150		°C
Storage Temperature Range	T _{STG}	-55 to +150		°C

* Part mounted on FR-4 board with recommended pad layout

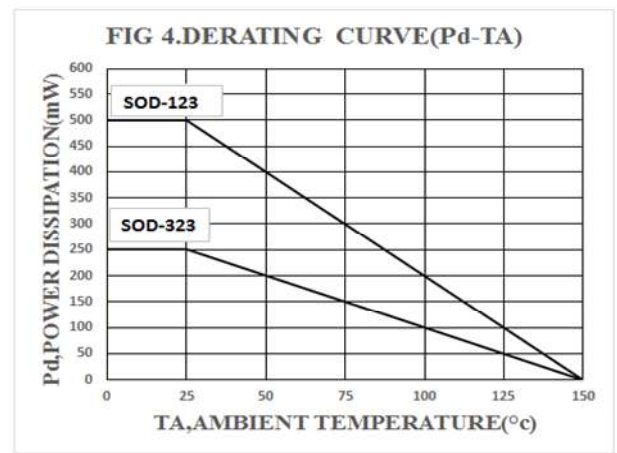
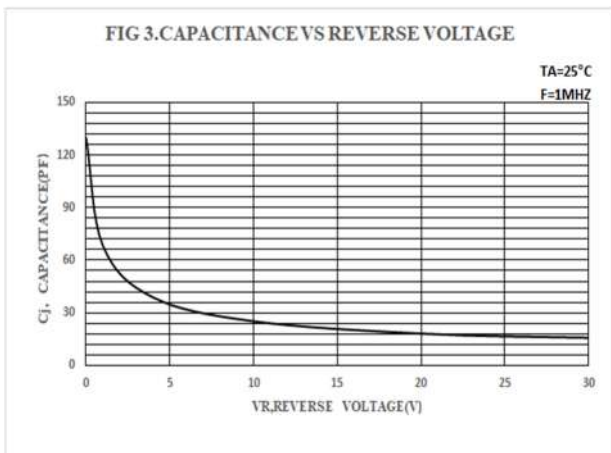
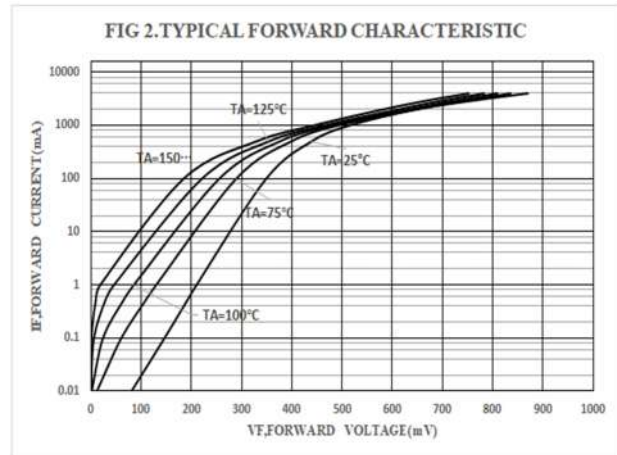
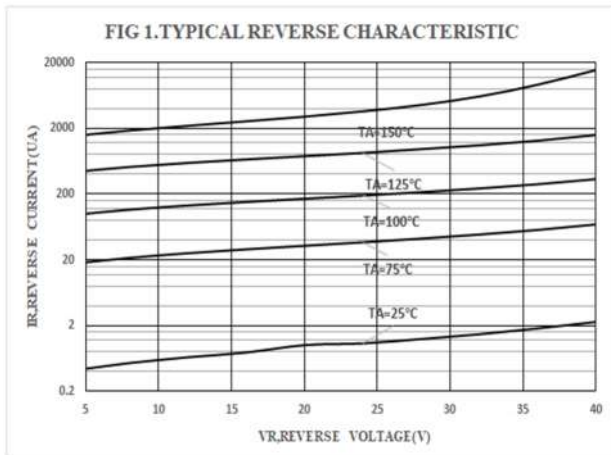
Electrical Characteristics (@ $T_A=25^\circ\text{C}$ unless otherwise specified)

Parameter	Symbol	Test conditions	Min.	Typ.	Max.	Units
Forward Voltage	V_F^*	$I_F=1\text{A}$ B5818W(S)H	-	-	0.55	V
		$I_F=1\text{A}$ B5819W(S)H	-	-	0.60	
		$I_F=3\text{A}$ B5818W(S)H	-	-	0.875	
		$I_F=3\text{A}$ B5819W(S)H	-	-	0.90	
Maximum Peak Reverse Current	I_R^{**}	$V_R=30\text{V}$ B5818W(S)H $V_R=40\text{V}$ B5819W(S)H	-	-	1	mA
Capacitance Between Terminals	C_T	$V_R=4\text{V}, f=1\text{MHz}$	-	39	120	pF

*Pulse width $\leq 380\ \mu\text{s}$, Duty cycle $< 2\%$

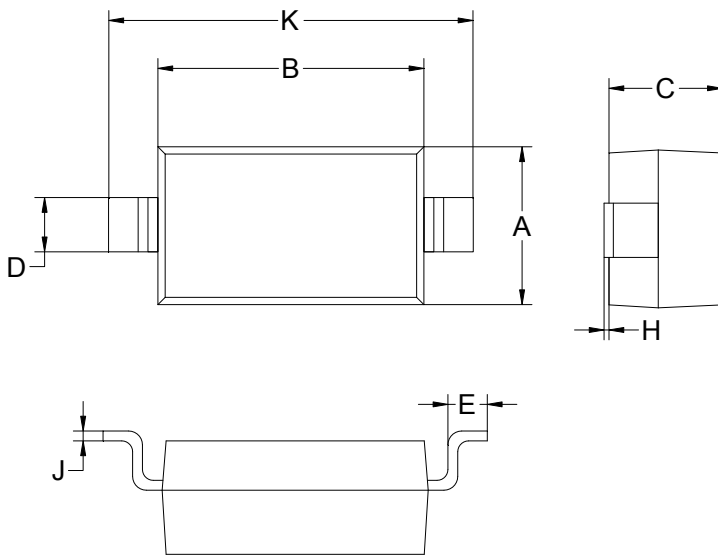
**pulse test , $t_p \leq 5\text{ms}$

Ratings and Characteristic Curves ($T_A=25^\circ\text{C}$ unless otherwise noted)



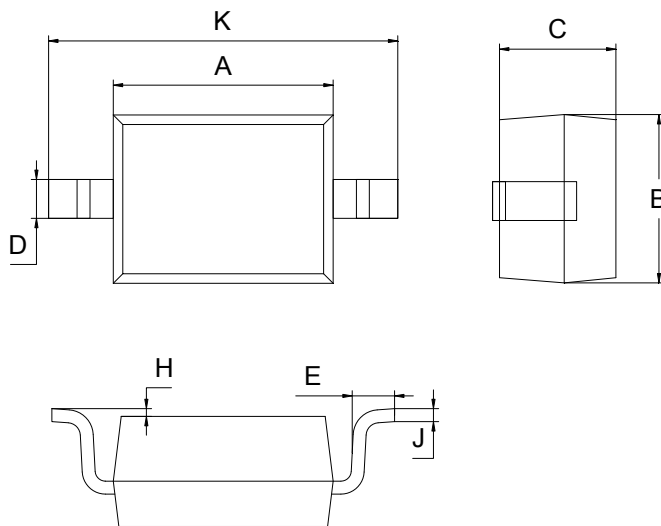
Package Outline Dimensions(unit:mm)

SOD-123



SOD-123		
Dim	Min	Max
A	1.45	1.75
B	2.55	2.85
C	1.00	1.30
D	0.50	0.60
E	0.25	0.45
H	0.02	0.10
J	0.05	0.15
K	3.55	3.85

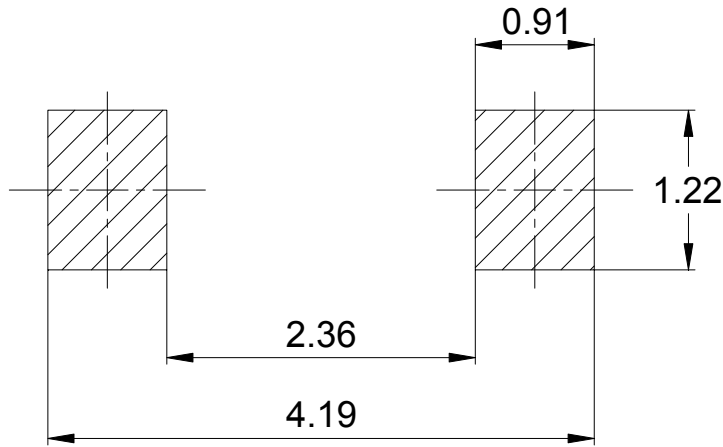
SOD-323



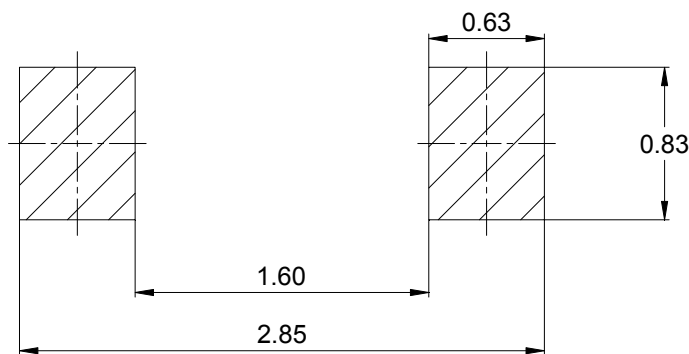
SOD-323		
Dim	Min	Max
A	1.60	1.80
B	1.20	1.40
C	0.80	0.90
D	0.25	0.35
E	0.22	0.42
H	0.02	0.10
J	0.05	0.15
K	2.55	2.75

Mounting Pad Layout(unit:mm)

SOD-123



SOD-323



IMPORTANT NOTICE

Galaxy Microelectronics (GME) reserves the right to make changes without further notice to any product herein to make corrections, modifications, improvements, or other changes. GME does not assume any liability arising out of the application or use of any product described herein; neither does it convey any license under its patent rights, nor the rights of others.

X-ON Electronics

Largest Supplier of Electrical and Electronic Components

Click to view similar products for [Schottky Diodes & Rectifiers](#) category:

Click to view products by [Galaxy](#) manufacturer:

Other Similar products are found below :

[CUS06\(TE85L,Q,M\)](#) [MA4E2039](#) [D1FH3-5063](#) [MBR0530L-TP](#) [MBR10100CT-BP](#) [MBR30H100MFST1G](#) [MMBD301M3T5G](#) [PMAD1103-LF](#) [PMAD1108-LF](#) [RB160M-50TR](#) [RB520S-30](#) [RB551V-30](#) [DD350N18K](#) [DZ435N40K](#) [DZ600N16K](#) [BAS16E6433HTMA1](#) [BAS 3010S-02LRH E6327](#) [BAT 54-02LRH E6327](#) [IDL02G65C5XUMA1](#) [NSR05F40QNXT5G](#) [NSVR05F40NXT5G](#) [JANS1N6640](#) [SB07-03C-TB-H](#) [SB1003M3-TL-W](#) [SBAT54CWT1G](#) [SBM30-03-TR-E](#) [SBS818-TL-E](#) [SK32A-LTP](#) [SK33A-TP](#) [SK34A-TP](#) [SK34B-TP](#) [SMD1200PL-TP](#) [ACDBN160-HF](#) [SS3003CH-TL-E](#) [STPS30S45CW](#) [PDS3100Q-7](#) [GA01SHT18](#) [CRS10I30A\(TE85L,QM\)](#) [MBR1240MFST1G](#) [MBRB30H30CT-1G](#) [BAS28E6433HTMA1](#) [BAS 70-02L E6327](#) [HSB123JTR-E](#) [JANTX1N5712-1](#) [VS-STPS40L45CW-N3](#) [DD350N12K](#) [SB007-03C-TB-E](#) [SB10015M-TL-E](#) [SB1003M3-TL-E](#) [SK110-LTP](#)