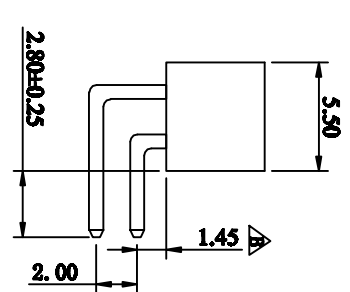
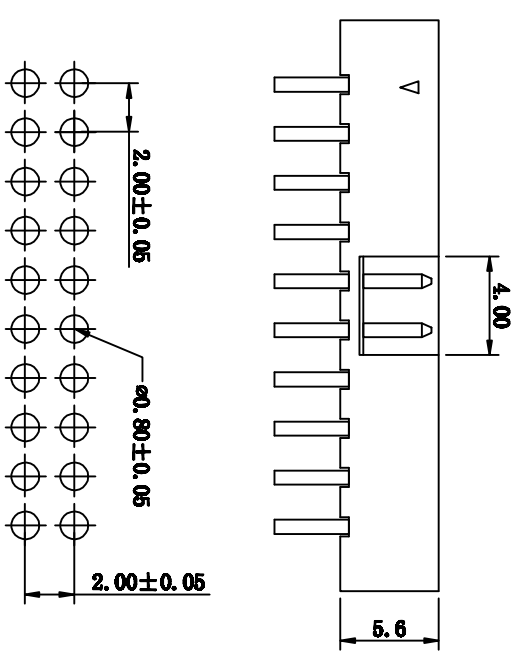
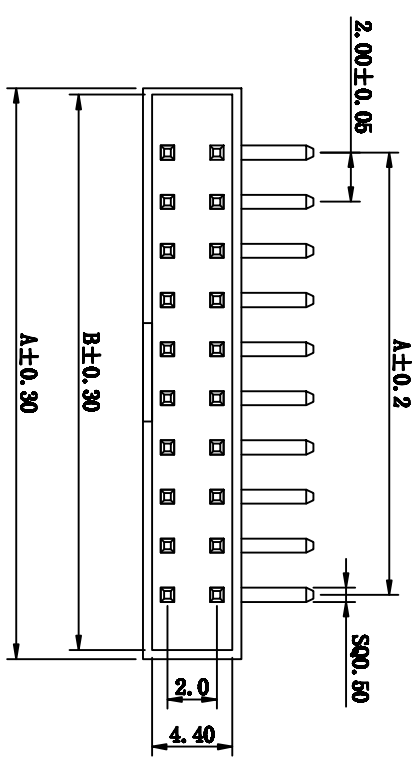


客户确认
日期

标记	版次	变更内容	日期
△	A版	新版图面	2008-04-10
△	B版	折弯尺寸1.2mm变更为1.45mm	2017-11-24



P.C.B. LAYOUT

TOLERANCE TABLE

.0	±0.20
.00	±0.10
.000	±0.05

SPECIFICATION:
 Current Rating: 1.5AMP
 Contact Resistance: 20m Ω (max)
 Insulation Resistance: 1000M Ω Min at 500V DC
 Dielectric Strength: 500V AC Per 1 Minute
 Operating Temperature: -40°C TO +105°C

MATERIALS:
 Insulator: Nylon66 or GT+30% Glass Fiber, UL94V-0
 Contact: Brass
 Contact plated: Gold Over Nickel

Poles	Part No.	Dimension mm		
		A	B	C
10	300-2R-10P	17.34	16.24	8.00
12	300-2R-12P	19.34	18.24	10.00
14	300-2R-14P	21.34	20.24	12.00
16	300-2R-16P	23.34	22.24	14.00
18	300-2R-18P	25.34	24.24	16.00
20	300-2R-20P	27.34	26.24	18.00
24	300-2R-24P	31.34	30.24	22.00
26	300-2R-26P	33.34	32.24	24.00
30	300-2R-30P	37.34	36.24	28.00
34	300-2R-34P	41.34	40.24	32.00
40	300-2R-40P	47.34	46.24	38.00
44	300-2R-44P	51.34	50.24	42.00
50	300-2R-50P	57.34	56.24	48.00

APPROVED: _____ DATE: _____

CHECKED: _____ DATE: _____

DRAWN: LYP

DATE: 2008-04-10

TITLE: 300-2R-XP

Part No. B-3002RXP-0110

UNIT mm SCALE free

FILE NO. Chantw-300-0004 REV. A

深圳市旭科盟实业有限公司
 CHANTW CHANKIEMENT INDUSTRY CO., LTD

X-ON Electronics

Largest Supplier of Electrical and Electronic Components

Click to view similar products for [Headers & Wire Housings](#) category:

Click to view products by [Cankemeng](#) manufacturer:

Other Similar products are found below :

[95000-104TRLF](#) [10135584-644402LF](#) [DF62W-EP2022PCA](#) [95000-106TRLF](#) [DF62W-2022SCA](#) [DF62W-EP2022PC](#) [2203348](#) [DF62W-2022SC](#) [1084018](#) [1029039](#) [1084017](#) [802-10-012-10-002000](#) [1112640](#) [1112639](#) [891-007-9SS-BST1T](#) [000-34000](#) [0008550134](#) [0009482033](#) [0009507031](#) [57102-F02-18ULF](#) [57102-S06-03LF](#) [57202-S52-04LF](#) [PCN6-15S-2.5E](#) [0039019024](#) [58102-G61-06LF](#) [582553-1](#) [0009485154](#) [0009508121](#) [0022285053](#) [0050291907](#) [018731A](#) [LY20-4P-DT1-P1E-BR](#) [02.125.8002.8](#) [60101931](#) [60598-1 \(Cut Strip\)](#) [M1625-3R/100](#) [61062-3](#) [61082-181009](#) [CSU011177004](#) [636-1427](#) [638009-1](#) [641938-9](#) [641991-4](#) [644168-1](#) [644827-2](#) [647662-1](#) [65039-019ELF](#) [65692-001LF](#) [65781-018](#) [65781-047](#)