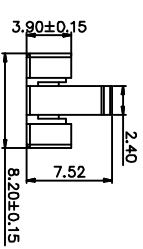
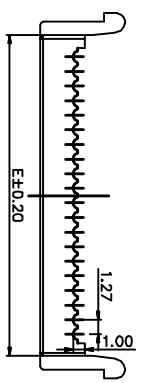
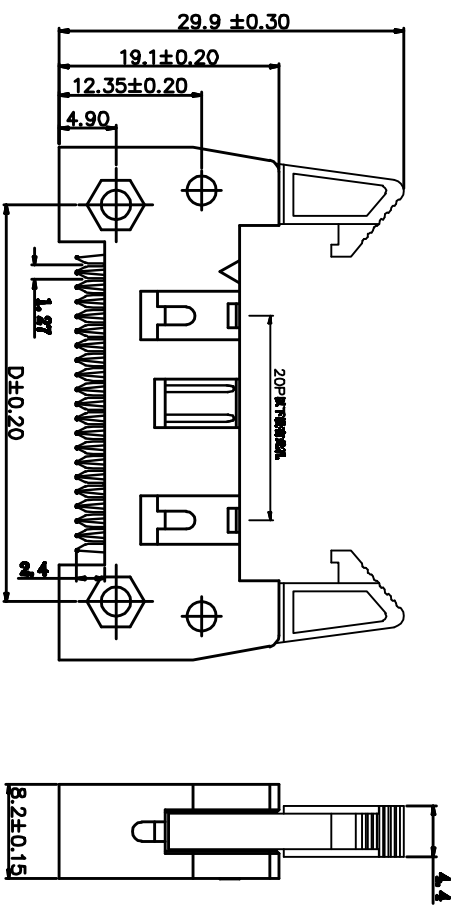
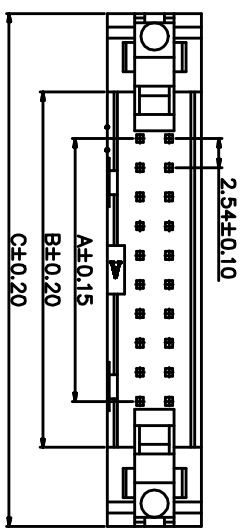


客户确认
日期



SPECIFICATIONS

Current Rating : 3 AMPS
 Withstanding Voltage : AC 1000V
 Insulation Resistance : 1000M Ω Min
 Contact Resistance : 20m Ω (max)
 Operating Temperature : -40 $^{\circ}$ C to +105 $^{\circ}$ C
 Insulator Material : Polyester (UL 94V-0)
 Standard : PBT
 Contact Material : Brass
 Contact plating : Au or Sn over 50 μ m Ni
 Max Processing Temp : 180 $^{\circ}$ C for 30-60 seconds
 (200 $^{\circ}$ C for 10 seconds)

Pos.	Part No.	Dim.				
		A	B	C	D	E
10	310F-10P 无耳	10.16	18.20	31.92	21.80	15.20
14	310F-14P 无耳	15.24	23.28	37.00	26.88	20.28
16	310F-16P 无耳	17.78	25.82	39.54	29.42	22.82
20	310F-20P 无耳	22.86	30.90	44.62	34.50	27.90
24	310F-24P 无耳	27.94	35.98	49.70	39.58	32.98
26	310F-26P 无耳	30.48	38.52	52.24	42.12	35.52
30	310F-30P 无耳	35.56	43.60	57.32	47.20	40.60
34	310F-34P 无耳	40.64	48.68	62.40	52.28	45.68
40	310F-40P 无耳	48.26	56.30	70.02	59.90	53.30
50	310F-50P 无耳	60.96	69.00	82.72	72.60	66.00
60	310F-60P 无耳	73.66	81.70	95.42	85.30	78.70
64	310F-64P 无耳	78.74	86.78	100.50	90.38	83.78

TOLERANCE TABLE

.0	±0.30
.00	±0.20
.000	±0.05

APPROVED: DATE:
 CHECKED: DATE:
 DRAWN: LYP DATE: 2008-04-07

TITLE: 310F-XP 压线式 无耳
 深圳市灿科盟实业有限公司
 CHANKEMENG INDUSTRY CO., LTD

CLIENT P/N: B-3100FFXP-0800
 UNIT: mm SCALE: Free
 FILE NO: Chantw-310-00008 REV: Q700

X-ON Electronics

Largest Supplier of Electrical and Electronic Components

Click to view similar products for [Headers & Wire Housings](#) category:

Click to view products by [Cankemeng](#) manufacturer:

Other Similar products are found below :

[95000-104TRLF](#) [10135584-644402LF](#) [DF62W-EP2022PCA](#) [95000-106TRLF](#) [DF62W-2022SCA](#) [DF62W-EP2022PC](#) [2203348](#) [DF62W-2022SC](#) [1084018](#) [1029039](#) [1084017](#) [802-10-012-10-002000](#) [1112640](#) [1112639](#) [891-007-9SS-BST1T](#) [000-34000](#) [0008550134](#) [0009482033](#) [0009507031](#) [57102-F02-18ULF](#) [57102-S06-03LF](#) [57202-S52-04LF](#) [PCN6-15S-2.5E](#) [0039019024](#) [58102-G61-06LF](#) [582553-1](#) [0009485154](#) [0009508121](#) [0022285053](#) [0050291907](#) [018731A](#) [LY20-4P-DT1-P1E-BR](#) [02.125.8002.8](#) [60101931](#) [60598-1 \(Cut Strip\)](#) [M1625-3R/100](#) [61062-3](#) [61082-181009](#) [CSU011177004](#) [636-1427](#) [638009-1](#) [641938-9](#) [641991-4](#) [644168-1](#) [644827-2](#) [647662-1](#) [65039-019ELF](#) [65692-001LF](#) [65781-018](#) [65781-047](#)