



| | |
|---------|------------|
| PS No. | PS-003-020 |
| Version | 00 |
| Date | 2015-6-27 |

继电器规格书

RELAY SPECIFICATION

品名/Product Description RF-SS-105DM
零件编号/Part Number
客户名/Customer

客户批准/Customer Approval

| |
|-------------------|
| 盖章处/STAMPING AREA |
| |





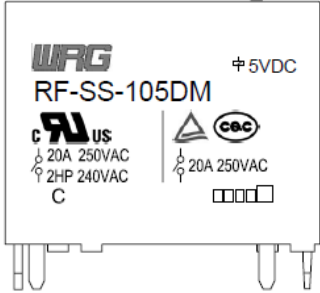
| 发行批准 / Issued by | | |
|------------------|-----|-----|
| PD | SM | R&D |
| 许忠 | 余明亮 | 冯旭强 |

| 继电器规格书 Relay SPECIFICATION | 型号 TYPE | RF-SS-105DM | 产品编号 Part Number | |
|-------------------------------|-----------------------|--------------------------------------|---------------------------|----------------------------|
| 1. <u>零件清单/PARTS LIST</u> | | | | |
| No. | 零件名 Part | 材质 MATERIAL | 型号/处理方式 TYPE/TREATMENT | UL FILE No. FLAME CLASS |
| 1 | 基座 Base | PBT | RG301 | E171666 |
| 2 | 骨架 Bobbin | PBT | RG301 | E171666 |
| 3 | 外壳 Case | PBT | RG301 | E171666 |
| 4 | 推片 Card | LCP | LCP E4008 | E249884 |
| 5 | 底板 Bottom Board | PBT | RG301 | E171666 |
| 6 | 轭铁 Yoke | 铁 Steel | 镀镍 Nickel Plated | |
| 7 | 衔铁 Armature | 铁 Steel | 镀镍 Nickel Plated | |
| 8 | 挂钩 Hinge | 铜合金 Cu Alloy | | |
| 9 | 可动弹片 S.C.C | 铜合金 Cu Alloy | | |
| 10 | 铁芯 Core | 铁 Steel | 镀镍 Nickel Plated | |
| 11 | M端子 M Terminal | 铜合金 Cu Alloy | | |
| 12 | C端子 C Terminal | 铜合金 Cu Alloy | | |
| 13 | 可动接点 C Contact | 银合金 Ag Alloy | | |
| 14 | M接点 M Contact | 银合金 Ag Alloy | | |
| 15 | 线圈端子 Coil Terminal | 铜合金 Cu Alloy | | |
| 16 | 线材 Wire | 聚氨脂漆包圆铜线 Polyurethane copper wire | 3UEW 155(F Class) | E164502 E234867 |
| 17 | 胶水 Sealing Resin | 环氧树脂 Epoxy | | |

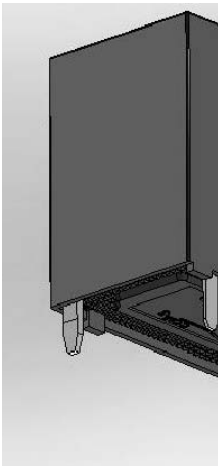
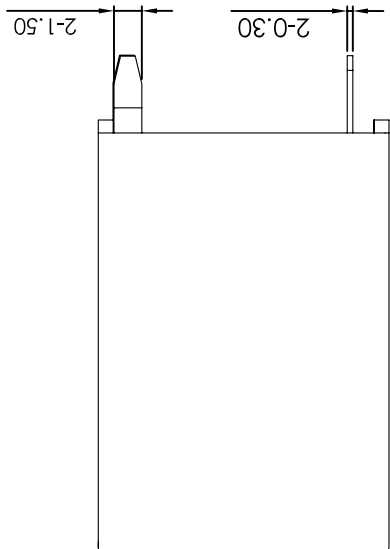
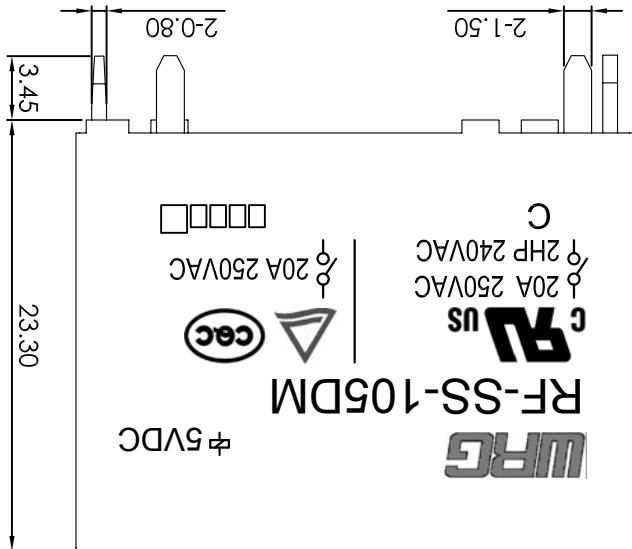
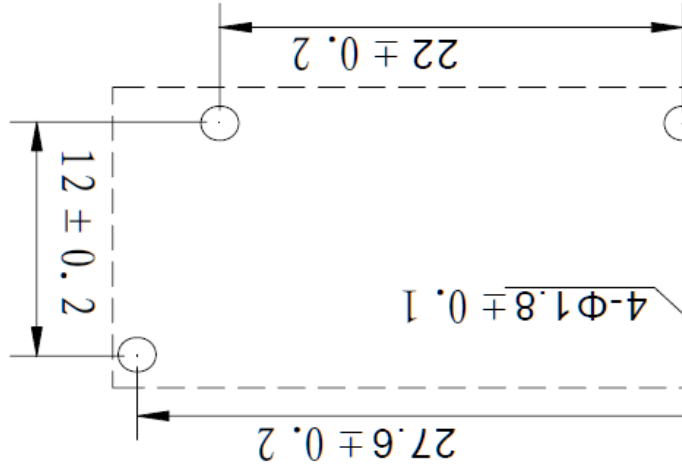
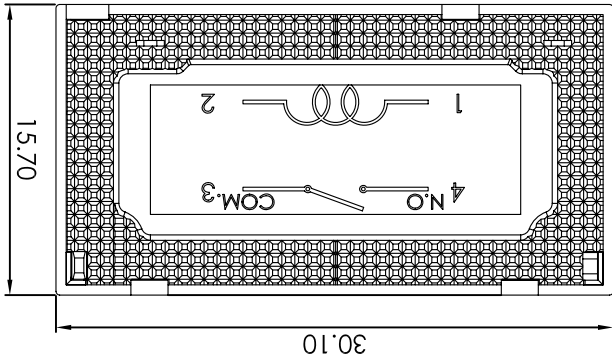
PS No.: PS-003-020 Ver 00

| | | | | | | | | | | | | | | | | | | | | | | | | | | | | | | | | | | | | | | | | | | | | | | | | | | | | |
|---|-------------------|---|---------------------|------------------------------------|----------------------------------|---|-----------------------------|-----------------------------|-----|-------------------------|-------------------------------|----|---|-------------------------------|-----|---|-------------------------------|------|------------------------------------|-------------------------------|------|------------------------------------|-----------------------------|------|---|-------------------------------------|-------------------|--|------------------------------|----|--|----------------------------------|-----|---|----------------------------|----|--|----------------------------|----|---|-------------------------------------|-----|-----------|--|-----|----------------------|--|---|------------|--|---|------------------------|
| 继电器规格书 Relay SPECIFICATION | 型号 TYPE | RF-SS-105DM | 产品编号 Part Number | PS No.: PS-003-020 Ver 00 | | | | | | | | | | | | | | | | | | | | | | | | | | | | | | | | | | | | | | | | | | | | | | | | |
| <p>2. <u>性能/SPECIFICATIONS</u></p> <p>2.1 <u>驱动部分/COIL SPECIFICATIONS</u></p> <table border="0"> <tr> <td>2.1.1 额定电压 Rated Coil Voltage</td> <td>5</td> <td>VDC (在20°C时) VDC at 20°C</td> </tr> <tr> <td>2.1.2 额定功率 Nominal Power</td> <td>0.9</td> <td>W (在20°C时) W at 20°C</td> </tr> <tr> <td>2.1.3 线圈电阻 Coil Resistance</td> <td>28</td> <td>$\Omega \pm 10\%$ (在20°C时) $\Omega \pm 10\%$ (at 20°C)</td> </tr> <tr> <td>2.1.4 额定电流 Nominal Current</td> <td>179</td> <td>mA$\pm 10\%$ (在20°C时) mA$\pm 10\%$ (at 20°C)</td> </tr> <tr> <td>2.1.5 吸合电压 Operate Voltage</td> <td>3.75</td> <td>VDC以下 (在20°C时) VDC Max. at 20°C</td> </tr> <tr> <td>2.1.6 释放电压 Release Voltage</td> <td>0.25</td> <td>VDC以上 (在20°C时) VDC Min. at 20°C</td> </tr> <tr> <td>2.1.7 最大连续施加电压 Max Power</td> <td>7.75</td> <td>VDC Max. 155%额定电压 VDC Max. 155% of Nominal</td> </tr> </table> <p>2.2 <u>开关部/CONTACT SPECIFICATION</u></p> <table border="0"> <tr> <td>2.2.1 开关类型 Contact Configuration</td> <td colspan="2">单刀常开型 1 Form A</td> </tr> <tr> <td>2.2.2 接点规格 Contact Rating</td> <td>20</td> <td>A 250VAC (阻性负载) A @250VAC (Resistive)</td> </tr> <tr> <td>2.2.3 接触电阻 Contact Resistance</td> <td>100</td> <td>mΩ 以下, (初期值, DC 6V/1A条件下) mΩ Max. @ Initiate, DC 6V/1A</td> </tr> <tr> <td>2.2.4 吸合时间 Operate Time</td> <td>20</td> <td>ms 以下 (额定电压下) ms Max. @ Rated Voltage</td> </tr> <tr> <td>2.2.5 释放时间 Release Time</td> <td>10</td> <td>ms 以下 (施加额定电压后断开时) ms Max. @ Rated Voltage</td> </tr> <tr> <td>2.2.6 最大动作频率 Max. Switching Rate</td> <td>300</td> <td>次/分 (无负载)</td> </tr> <tr> <td></td> <td>300</td> <td>ops./min. (no load).</td> </tr> <tr> <td></td> <td>6</td> <td>次/分 (额定负载)</td> </tr> <tr> <td></td> <td>6</td> <td>ops./min. (Rated load)</td> </tr> </table> | | | | | 2.1.1 额定电压 Rated Coil Voltage | 5 | VDC (在20°C时) VDC at 20°C | 2.1.2 额定功率 Nominal Power | 0.9 | W (在20°C时) W at 20°C | 2.1.3 线圈电阻 Coil Resistance | 28 | $\Omega \pm 10\%$ (在20°C时) $\Omega \pm 10\%$ (at 20°C) | 2.1.4 额定电流 Nominal Current | 179 | mA $\pm 10\%$ (在20°C时) mA $\pm 10\%$ (at 20°C) | 2.1.5 吸合电压 Operate Voltage | 3.75 | VDC以下 (在20°C时) VDC Max. at 20°C | 2.1.6 释放电压 Release Voltage | 0.25 | VDC以上 (在20°C时) VDC Min. at 20°C | 2.1.7 最大连续施加电压 Max Power | 7.75 | VDC Max. 155%额定电压 VDC Max. 155% of Nominal | 2.2.1 开关类型 Contact Configuration | 单刀常开型 1 Form A | | 2.2.2 接点规格 Contact Rating | 20 | A 250VAC (阻性负载) A @250VAC (Resistive) | 2.2.3 接触电阻 Contact Resistance | 100 | m Ω 以下, (初期值, DC 6V/1A条件下) m Ω Max. @ Initiate, DC 6V/1A | 2.2.4 吸合时间 Operate Time | 20 | ms 以下 (额定电压下) ms Max. @ Rated Voltage | 2.2.5 释放时间 Release Time | 10 | ms 以下 (施加额定电压后断开时) ms Max. @ Rated Voltage | 2.2.6 最大动作频率 Max. Switching Rate | 300 | 次/分 (无负载) | | 300 | ops./min. (no load). | | 6 | 次/分 (额定负载) | | 6 | ops./min. (Rated load) |
| 2.1.1 额定电压 Rated Coil Voltage | 5 | VDC (在20°C时) VDC at 20°C | | | | | | | | | | | | | | | | | | | | | | | | | | | | | | | | | | | | | | | | | | | | | | | | | | |
| 2.1.2 额定功率 Nominal Power | 0.9 | W (在20°C时) W at 20°C | | | | | | | | | | | | | | | | | | | | | | | | | | | | | | | | | | | | | | | | | | | | | | | | | | |
| 2.1.3 线圈电阻 Coil Resistance | 28 | $\Omega \pm 10\%$ (在20°C时) $\Omega \pm 10\%$ (at 20°C) | | | | | | | | | | | | | | | | | | | | | | | | | | | | | | | | | | | | | | | | | | | | | | | | | | |
| 2.1.4 额定电流 Nominal Current | 179 | mA $\pm 10\%$ (在20°C时) mA $\pm 10\%$ (at 20°C) | | | | | | | | | | | | | | | | | | | | | | | | | | | | | | | | | | | | | | | | | | | | | | | | | | |
| 2.1.5 吸合电压 Operate Voltage | 3.75 | VDC以下 (在20°C时) VDC Max. at 20°C | | | | | | | | | | | | | | | | | | | | | | | | | | | | | | | | | | | | | | | | | | | | | | | | | | |
| 2.1.6 释放电压 Release Voltage | 0.25 | VDC以上 (在20°C时) VDC Min. at 20°C | | | | | | | | | | | | | | | | | | | | | | | | | | | | | | | | | | | | | | | | | | | | | | | | | | |
| 2.1.7 最大连续施加电压 Max Power | 7.75 | VDC Max. 155%额定电压 VDC Max. 155% of Nominal | | | | | | | | | | | | | | | | | | | | | | | | | | | | | | | | | | | | | | | | | | | | | | | | | | |
| 2.2.1 开关类型 Contact Configuration | 单刀常开型 1 Form A | | | | | | | | | | | | | | | | | | | | | | | | | | | | | | | | | | | | | | | | | | | | | | | | | | | |
| 2.2.2 接点规格 Contact Rating | 20 | A 250VAC (阻性负载) A @250VAC (Resistive) | | | | | | | | | | | | | | | | | | | | | | | | | | | | | | | | | | | | | | | | | | | | | | | | | | |
| 2.2.3 接触电阻 Contact Resistance | 100 | m Ω 以下, (初期值, DC 6V/1A条件下) m Ω Max. @ Initiate, DC 6V/1A | | | | | | | | | | | | | | | | | | | | | | | | | | | | | | | | | | | | | | | | | | | | | | | | | | |
| 2.2.4 吸合时间 Operate Time | 20 | ms 以下 (额定电压下) ms Max. @ Rated Voltage | | | | | | | | | | | | | | | | | | | | | | | | | | | | | | | | | | | | | | | | | | | | | | | | | | |
| 2.2.5 释放时间 Release Time | 10 | ms 以下 (施加额定电压后断开时) ms Max. @ Rated Voltage | | | | | | | | | | | | | | | | | | | | | | | | | | | | | | | | | | | | | | | | | | | | | | | | | | |
| 2.2.6 最大动作频率 Max. Switching Rate | 300 | 次/分 (无负载) | | | | | | | | | | | | | | | | | | | | | | | | | | | | | | | | | | | | | | | | | | | | | | | | | | |
| | 300 | ops./min. (no load). | | | | | | | | | | | | | | | | | | | | | | | | | | | | | | | | | | | | | | | | | | | | | | | | | | |
| | 6 | 次/分 (额定负载) | | | | | | | | | | | | | | | | | | | | | | | | | | | | | | | | | | | | | | | | | | | | | | | | | | |
| | 6 | ops./min. (Rated load) | | | | | | | | | | | | | | | | | | | | | | | | | | | | | | | | | | | | | | | | | | | | | | | | | | |

| | | | | | | |
|--|------------|-------------|---------------------|--|-----------------------|-----------|
| 继电器规格书 Relay SPECIFICATION | 型号 TYPE | RF-SS-105DM | 产品编号 Part Number | | PS No.: PS-003-020 | Ver 00 |
| <p>2.3 特性/GENERAL SPECIFICATION</p> <p>2.3.1 绝缘电阻 1000 MΩ以上（500VDC） Insulation Resistance 1000 MΩ Min@500VDC</p> <p>2.3.2 介质耐压 1000 VAC/分钟(接点间) Dielectric Strength 4500 VAC/分钟(线圈/接点间) 1000 VAC@50/60Hz 1 min.(Between Open Contacts) 4500 VAC@50/60Hz 1 min.(Between Coil and Contacts)</p> <p>2.3.3 电气寿命 1×10⁵ 次以上（额定负载） Electrical Life 1×10⁵ Cycle Min. @Rate Load</p> <p>2.3.4 机械寿命 1×10⁶ 次以上（无负载） Mechanical Life 1×10⁶ Cycle Min. @no load</p> <p>2.3.5 使用环境温度 -40~105 ℃（无凝结时） Temperature -40~105 ℃ @no condensation</p> <p>2.3.6 使用环境湿度 20~85% RH（无凝结时） Humidity 20~85% RH @no condensation</p> <p>2.3.7 抗振动 耐久 10~55 Hz, 双振幅 1.5mm Vibration Mechanical 10 to 55 Hz, 1.5mm double amplitude 误动作 10~55 Hz, 双振幅1.5mm Operational 10 to 55 Hz, 1.5mm double amplitude</p> <p>2.3.8 抗冲击 耐久 980 m/s² Min（约100G） Shock Mechanical 980 m/s² Min（100G approximately） 误动作 98 m/s² Min（约10G） Operational 98 m/s² Min（10G approximately）</p> <p>2.3.9 重量 22 克 Weight 22 g</p> <p>2.3.10 焊锡条件 5s @ 260℃（波峰焊） Solder ability 5s @ 260℃ (wave soldering)</p> <p>2.4 端子性能/TERMINAL CHARACTERISTICS</p> <p>2.4.1 端子强度 5牛/10秒, 任意方向静态压力, 无异常, 但端子弯曲可以 Terminals strength 5N 10s, There shall be no abnormalities. (The curving of the terminal shall be acceptable)</p> <p>2.4.2 可焊性 260±5℃ 5s, 端子头部3mm部分90%以上的面积有锡覆盖 Terminal solderbility (无铅焊锡) 260±5℃ 5s, In Case of lead lead free solder, 90% of the dipped portion shall be solderd.</p> <p>2.4.3 耐热性 5s @ 260℃,端子头部3mm浸入锡中, 无异常发生 Soldring Heat Resistance 5s @ 260℃, There shall be no abnormalities. (wave soldering)</p> | | | | | | |

| | | | | |
|---|------------|--|---------------------|---------|
| 继电器规格书 Relay SPECIFICATION | 型号 TYPE | RF-SS-105DM | 产品编号 Part Number | PS No.: |
| | | | | |
| 2.5 <u>安全规格/SAFETY REQUIREMENTS</u> | | | | |
| 2.5.1 UL规格认定 (UL & C-UL) UL (UL & C-UL) | | 档案号: File No.: | E345228 | |
| | |  | | |
| 2.5.2 CQC标志认证 CQC | | 证书编号: Certificate No.: | CQC10002052738 | |
| | |  | | |
| 2.5.3 TUV规格认定 TUV | | 证书号 Certificate No. | R50194013 | |
| | |  | | |
| 2.5.4 VDE规格认定 VDE | | 证书号 Certificate No. | | |
| | |  | | |
| 3. <u>捺印图/Mark Layout</u> | | | | |
|  | | <p>注: 仅供参考. For reference only.</p> | | |
| 注/Remark | | | | |
| 以中文版为准, 英文版仅供参考。 | | | | |
| Chinese version is the standard one, English version is only for information. | | | | |
| 结束/<END> | | | | |

| | | | | | | | | | | |
|----------|----|----------------------|----------|------|----|-----|----|------|----|-----------|
| 型号 | RF | 公差/TOLERANCES (. mm) | <1 | ±0.2 | 数量 | 1 | 版本 | V1.0 | 图号 | RF 20A(P) |
| | >5 | | ±0.4 | 比例 | | 4:1 | | 页数 | | 1/1 |
| 子图号 | 承认 | 作图日期 | 2014.3.3 | | 制图 | 李莉芳 | | 检图 | | |
| U-003-02 | | | | | | | | | | |



X-ON Electronics

Largest Supplier of Electrical and Electronic Components

Click to view similar products for [General Purpose Relays](#) category:

Click to view products by [Wangrong](#) manufacturer:

Other Similar products are found below :

[APF30318](#) [JVN1AF-4.5V-F](#) [PCN-105D3MHZ](#) [5JO-10000S-SIL](#) [5JO-1000CD-SIL](#) [5JO-400CD-SIL](#) [LY2S-AC220/240](#) [LYQ20DC12](#)
[6031007G](#) [6131406HQ](#) [6-1393099-8](#) [6-1393122-4](#) [6-1393123-2](#) [6-1393767-1](#) [6-1393843-7](#) [6-1415012-1](#) [6-1419102-2](#) [6-1423698-4](#) [6-](#)
[1608051-6](#) [6-1608067-0](#) [6-1616170-6](#) [6-1616248-2](#) [6-1616282-3](#) [6-1616348-2](#) [6-1616350-1](#) [6-1616350-8](#) [6-1616358-7](#) [6-1616359-9](#) [6-](#)
[1616360-9](#) [6-1616931-6](#) [6-1617039-1](#) [6-1617052-1](#) [6-1617090-2](#) [6-1617090-5](#) [6-1617347-5](#) [6-1617353-3](#) [6-1617801-8](#) [6-1618107-9](#) [6-](#)
[1618248-4](#) [M83536/1-027M](#) [M83725/1-005](#) [CX-4014](#) [MAHC-5494](#) [MAVCD-5419-6](#) [703XCX-120A](#) [7-1393100-5](#) [7-1393111-7](#) [7-](#)
[1393144-5](#) [7-1393767-8](#) [7-1414968-8](#)