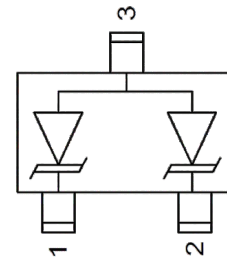
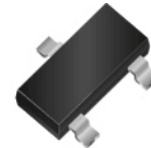


RoHS Device Halogen Free

SOT-23

Features

- Small package for use in portable electronics
- Low leakage current
- Low clamping voltage
- Response Time is < 1 ns
- Protects one bidirectional line or two unidirectional lines
- Working voltages : 3.3V,5V,12V,24V
- Solid state silicon avalanche technology
- Device Meets MSL 1 Requirements
- ROHS compliant



Main applications

- Data lines
- Industrial Controls
- Cellular handsets AND accessories
- Portable instrumentation
- Peripherals
- Notebook Computers
- Set Top Box
- Projection TV

Maximum ratings (Tamb=25°C Unless Otherwise Specified)

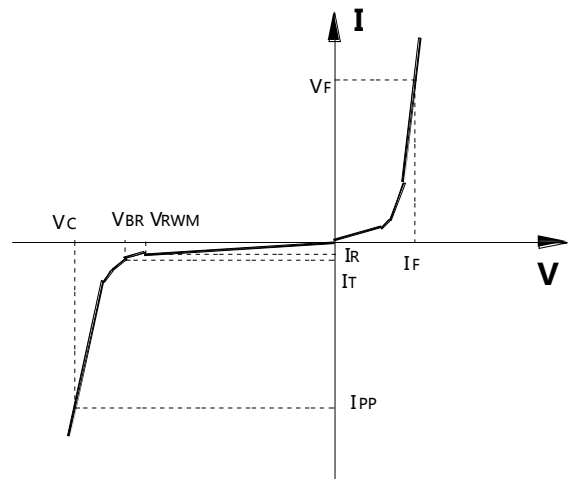
Parameter	Symbol	Value	Unit
Peak Pulse Power (tp=8/20µs waveform)	P _{PPP}	300	Watts
ESD Rating per IEC61000-4-2:	Contact	30	KV
	Air		
Lead Soldering Temperature	T _L	260 (10 sec.)	°C
Operating Temperature Range	T _J	-55 ~ 150	°C
Storage Temperature Range	T _{STG}	-55 ~ 150	°C

Electrical characteristics ($T_{amb}=25^{\circ}C$ Unless Otherwise Specified)

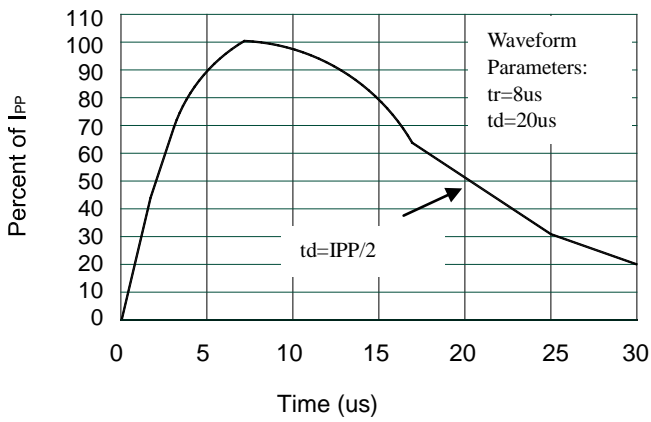
Device	VRWM	IR @ VRWM	VBR @ 1 mA	VC	Max IPP	Capacitance	
			(Volts)	@ 1 A		@ VR = 0 V, 1 MHz (pF)	
	(V)	(uA)	Min	(V)	(A)	Typ	Max
PESD3V3S2VT	3.3	10	5	7.8	16	120	180
PESD5V2S2UT	5.2	5.5	6	9.8	20	190	220
PESD12VS2UT	12	1	13.3	19	12	60	90
PESD24VS2UT	24	1	26.7	43	5	35	50

Junction capacitance is measured in VR=0V,F=1MHz

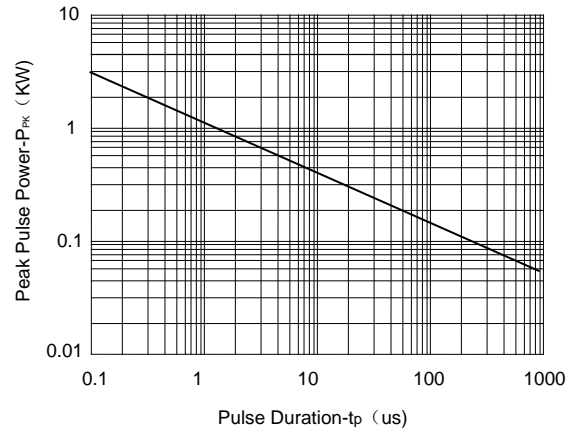
Symbol	Parameter
VRWM	Working Peak Reverse Voltage
VBR	Breakdown Voltage @ IT
VC	Clamping Voltage @ IPP
IT	Test Current
IRM	Leakage current at VRWM
IPP	Peak pulse current
CO	Off-state Capacitance
CJ	Junction Capacitance



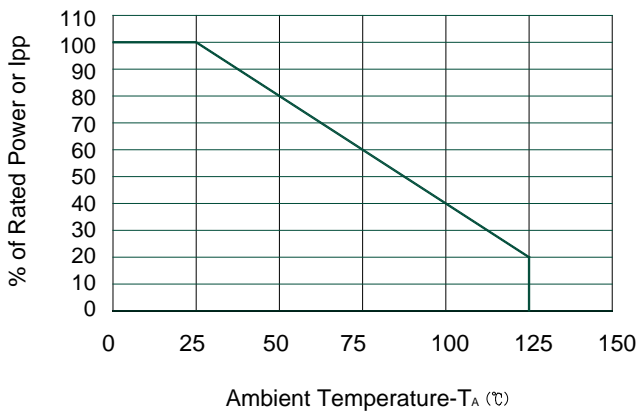
Typical electrical characterist applications



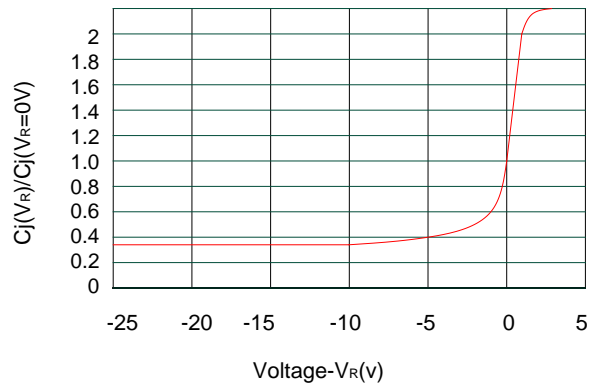
Pulse Waveform



Non-Repetitive Peak Pulse Power vs. Pulse Time



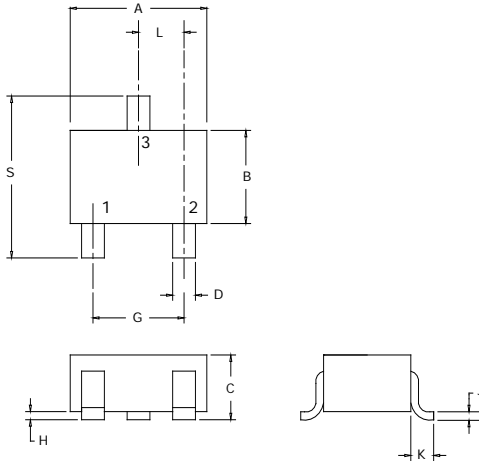
Power Derating Curve



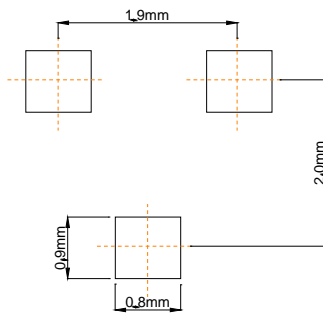
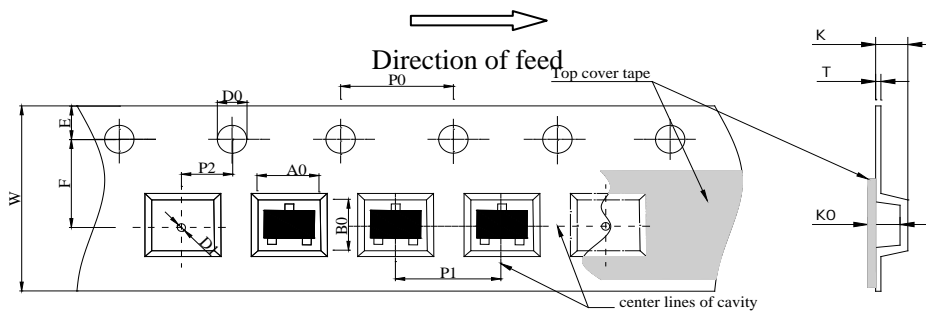
Junction Capacitance vs. Reverse Voltage

Package Information
■ Mechanical Data

Case: SOT-23



Dim	Millimeters		Inches	
	Min	Max	Min	Max
A	2.80	3.04	0.1102	0.1197
B	1.20	1.40	0.0472	0.0551
C	0.89	1.11	0.0350	0.0440
D	0.37	0.50	0.0150	0.0200
G	1.78	2.04	0.0701	0.0807
H	0.013	0.100	0.0005	0.0040
J	0.085	0.177	0.0034	0.0070
K	0.35	0.69	0.0140	0.0285
L	0.89	1.02	0.0350	0.0401
S	2.10	2.64	0.0830	0.1039

■ Recommended Pad outline

■ Product Orientation (continued)


Package	Chip Size	Pocket Size B0×A0×K0(mm)	Tape Width	Reel Diameter	Quantity Per Reel	P0	P1
SOT-23	2.32×2.92×1.0	2.70×3.10×1.15	8mm	178mm(7")	3000	4mm	4mm
D0	D1	E	F	K	T	W	
1.5mm	1.0mm	1.75mm	3.5mm	1.10mm	0.2mm	8mm	

X-ON Electronics

Largest Supplier of Electrical and Electronic Components

Click to view similar products for [ESD Suppressors / TVS Diodes](#) category:

Click to view products by [Yenji](#) manufacturer:

Other Similar products are found below :

[NTE4902](#) [P4SMAJ15A](#) [P4SMAJ26A](#) [SMAJ400CA-TP](#) [TGL34-47CA](#) [ESDAULC45-1BF4](#) [SM1605E3/TR13](#) [SMF20A-TP](#) [P4SMAJ12A](#)
[CPDUR24V-HF](#) [CPDQC5V0USP-HF](#) [CPDQC5V0-HF](#) [MPLAD30KP45CAE3](#) [MMBZ27VCLQ-7-F](#) [MMAD1108/TR13](#) [MPLAD30KP24A](#)
[ACPDQC5V0R-HF](#) [DFLT170A-7](#) [NTE4900](#) [NTE4926](#) [NTE4938](#) [SMF22A-TP](#) [SMF12A-TP](#) [SLVU2.8-TP](#) [SMLJ6.5CA-TP](#) [SMAJ6.5CA-](#)
[TP](#) [MMAD1108E3/TR13](#) [D5V0M1U2LP3-7](#) [SMAJ400A-TP](#) [AOZ8811DT-03](#) [AOZ8831DI-05](#) [AOZ8831DT-03](#) [SMAJ188CA](#) [3SMC33CA](#)
[BK](#) [CPDQC3V3C-HF](#) [CPDQC12VE-HF](#) [MPLAD30KP170CA](#) [82357120100](#) [5.0SMLJ15CA-TP](#) [5KP18A-TP](#) [P6KE8.2A-TP](#)
[MPLAD30KP43CAE3](#) [SMAJ43A-TP](#) [D5V0F6U8LP33-7](#) [TVS5501V10MUT5G](#) [5.0SMLJ24CA-TP](#) [SMAJ110CA-TP](#) [MPLAD15KP75CAE3](#)
[MMAD1103e3/TR13](#) [DFLT40AQ-7](#)