
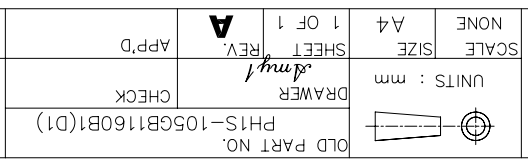


REV: A	RELEASE	DESCRIPTION	DATE	ANG. = ±3°	SCALE	SIZE	SHEET	REV.	APP'D	NEW PART NO.	DRAW NO.
			2004/12/16	0.000 = ±.000	NONE	A4	1 OF 1	A		210-91-05GB03	210-91-05GB03
				0.00 = ±.XXX					CHECK		
				0.00 = ±.20							
				0.00 = ±.30							
				TOLERANCE							

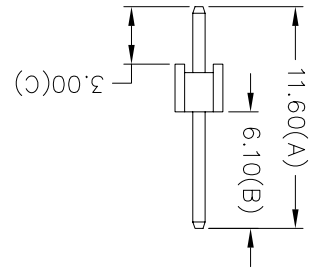
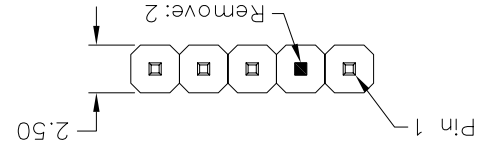
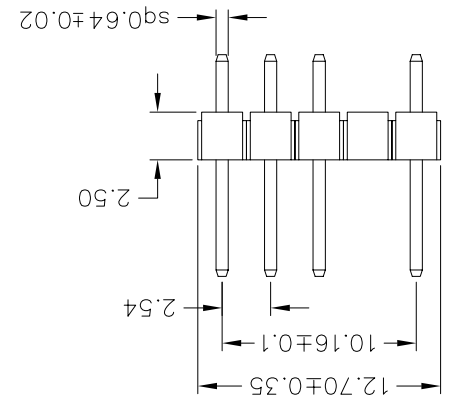
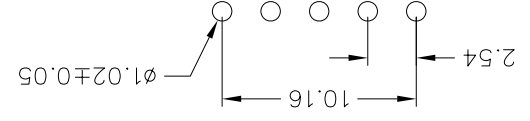
OLD PART NO. PH1S-105GB1160B1(D1)
 DRAWER
 SHEET 1 OF 1
 REV. A
 APP'D
 NEW PART NO. 210-91-05GB03
 DRAW NO. 210-91-05GB03
 PINREX TECHNOLOGY CORP.


TITLE
 PIN HEADER 2.54*2.54mm
 STRAIGHT TYPE, SINGLE ROW



REV: A	RELEASE	DESCRIPTION	DATE	ANG. = ±3°	SCALE	SIZE	SHEET	REV.	APP'D	NEW PART NO.	DRAW NO.
			2004/12/16	0.000 = ±.000	NONE	A4	1 OF 1	A		210-91-05GB03	210-91-05GB03
				0.00 = ±.XXX					CHECK		
				0.00 = ±.20							
				0.00 = ±.30							
				TOLERANCE							

Recommended P.C.B Layout



1. 1: Single row
 - 2: Dual rows
 2. No. of contacts per row
 3. G: Gold flash
 - S: Selective
 - T: Tin plated
 4. B: Black insulator
 - W: White insulator
 5. Pinrex internal code.
- 210-9 1- 05 G B 03
 1 2 3 4 5

MATERIAL
 Insulator : NYLON 6T or 9T
 Contact Pin : Brass

SPECIFICATION
 Current Rate : 3 AMP
 Insulation Resistance : 5000MΩMin. at DC 500V
 Contact Resistance : 20mΩMax. at DC 100mA
 Dielectric Voltage : AC 500V for one minute
 Operation Temperature : -40°C to + 105°C

X-ON Electronics

Largest Supplier of Electrical and Electronic Components

Click to view similar products for [Headers & Wire Housings](#) category:

Click to view products by [Pinrex](#) manufacturer:

Other Similar products are found below :

[95000-104TRLF](#) [10135584-644402LF](#) [DF62W-EP2022PCA](#) [95000-106TRLF](#) [DF62W-2022SCA](#) [DF62W-EP2022PC](#) [2203348](#) [DF62W-2022SC](#) [1084018](#) [1029039](#) [1084017](#) [802-10-012-10-002000](#) [1112640](#) [1112639](#) [891-007-9SS-BST1T](#) [000-34000](#) [0008550134](#) [0009482033](#) [0009507031](#) [57102-F02-18ULF](#) [57102-S06-03LF](#) [57202-S52-04LF](#) [PCN6-15S-2.5E](#) [0039019024](#) [58102-G61-06LF](#) [582553-1](#) [0009485154](#) [0009508121](#) [0022285053](#) [0050291907](#) [018731A](#) [LY20-4P-DT1-P1E-BR](#) [02.125.8002.8](#) [60101931](#) [60598-1 \(Cut Strip\)](#) [M1625-3R/100](#) [61062-3](#) [61082-181009](#) [CSU011177004](#) [636-1427](#) [638009-1](#) [641938-9](#) [641991-4](#) [644168-1](#) [644827-2](#) [647662-1](#) [65039-019ELF](#) [65692-001LF](#) [65781-018](#) [65781-047](#)