

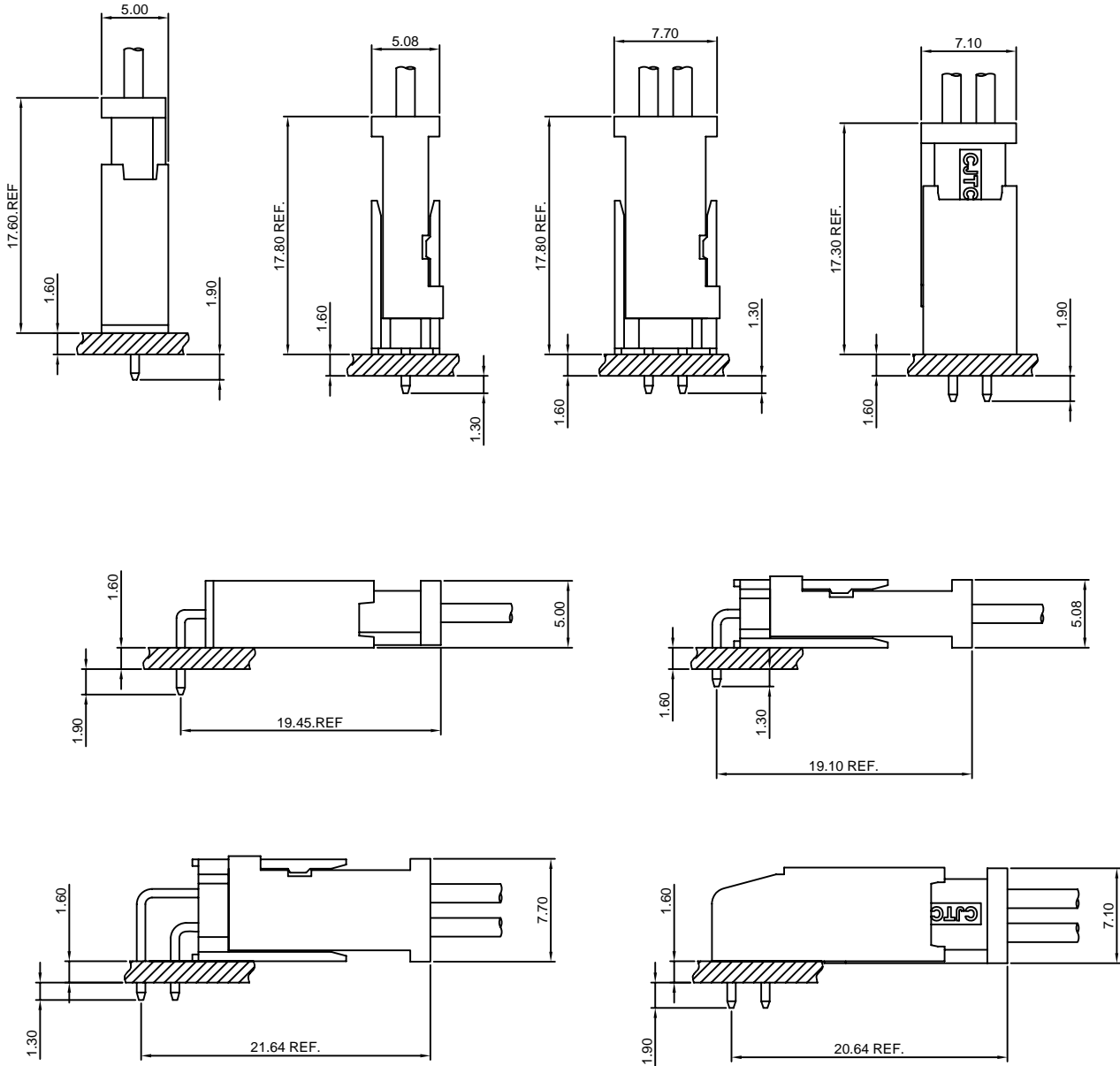
## Specifications

Current rating:3A AC,DC  
 Voltage rating:250V AC,DC  
 Temperature range:-40°C~+105°C  
 Contact resistance:20mΩMax.  
 Insulation resistance:1000MΩMin.  
 Withstanding voltage:1000V AC/minute  
 \*Compliant with RoHS and REACH\*  
 \*Meet the HF/Halogen Free,need to customize\*  
 \*Contact CJT for details\*

## Standards



# Assembly layout

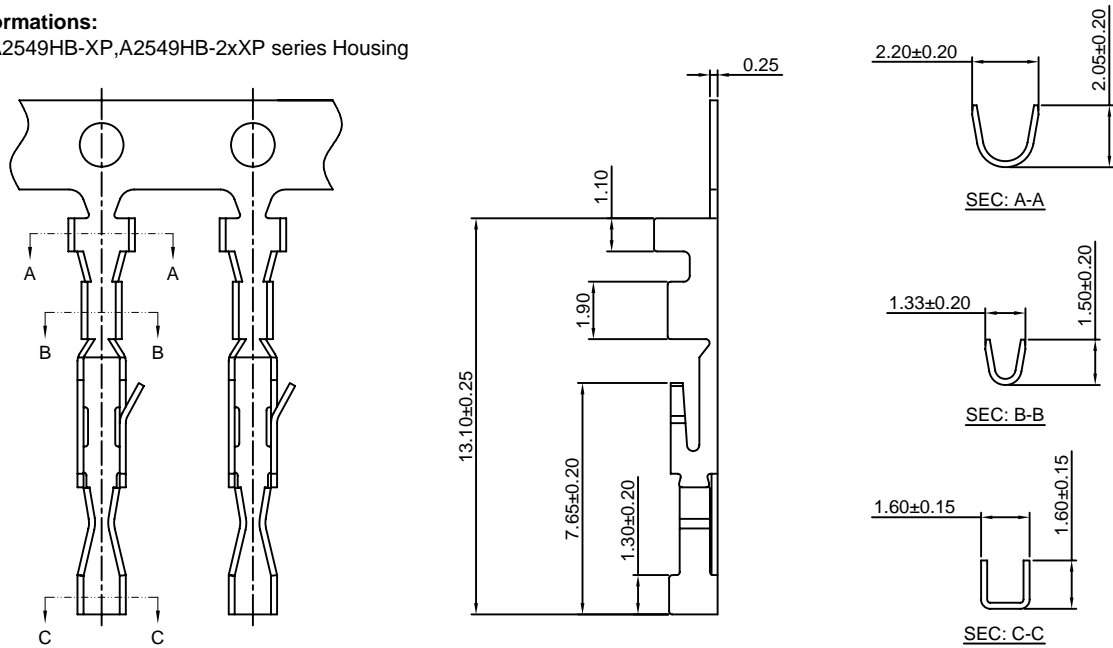


# A2549-T-A

2.54mm Pitch Crimp Terminal

#### Reference Informations:

\*Used in CJT A2549HB-XP, A2549HB-2xXP series Housing



#### Ordering information & Specifications:

Unit:mm

| Part NO.   | Wire Range | Insulation O.D. | Material        | Finish           | Qty/reel   |
|------------|------------|-----------------|-----------------|------------------|------------|
| A2549-TP-A | AWG#22-#28 | 1.55mm(max)     | Phosphor Bronze | Tin over Nickel  | 15,000 PCS |
| A2549-GP-A | AWG#22-#28 | 1.55mm(max)     | Phosphor Bronze | Gold over Nickel | 15,000 PCS |

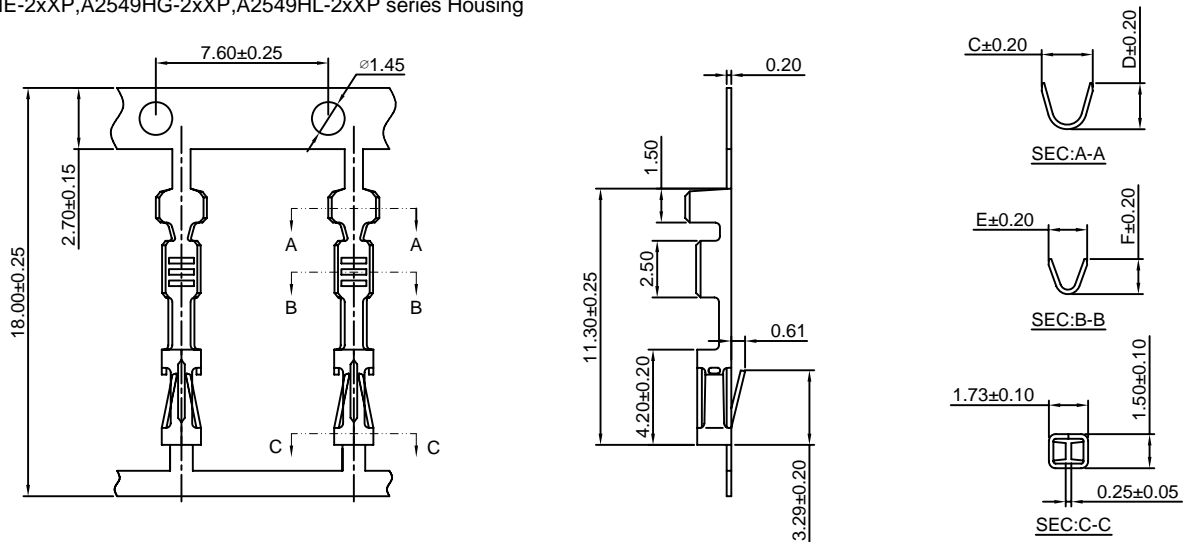
Optional Gold plating available but MOQ requested

# A2549-T-C

2.54mm Pitch Crimp Terminal

#### Reference Informations:

\*Used in CJT A2549HC-XP, A2549HC-2xXP, A2549HD-XP, A2549HD-2xXP, A2549HE-2xXP, A2549HG-2xXP, A2549HL-2xXP series Housing



#### Ordering information & Specifications:

Unit:mm

| Part NO.     | Wire Range | Insulation O.D. | Material        | Finish           | C    | D    | E    | F    | Qty/reel  |
|--------------|------------|-----------------|-----------------|------------------|------|------|------|------|-----------|
| A2549-TP-C   | AWG#22-#26 | 1.55mm(max)     | Phosphor Bronze | Tin over Nickel  | 2.25 | 2.03 | 1.70 | 1.55 | 8,000 PCS |
| A2549-GP-C   | AWG#22-#26 | 1.55mm(max)     | Phosphor Bronze | Gold over Nickel | 2.25 | 2.03 | 1.70 | 1.55 | 8,000 PCS |
| A2549-TP-C-H | AWG#20-#24 | 1.90mm(max)     | Phosphor Bronze | Tin over Nickel  | 2.61 | 2.03 | 2.03 | 1.80 | 8,000 PCS |
| A2549-GP-C-H | AWG#20-#24 | 1.90mm(max)     | Phosphor Bronze | Gold over Nickel | 2.61 | 2.03 | 2.03 | 1.80 | 8,000 PCS |
| A2549-TP-C-L | AWG#28-#32 | 0.90mm(max)     | Phosphor Bronze | Tin over Nickel  | 2.01 | 1.54 | 1.35 | 1.23 | 8,000 PCS |
| A2549-GP-C-L | AWG#28-#32 | 0.90mm(max)     | Phosphor Bronze | Gold over Nickel | 2.01 | 1.54 | 1.35 | 1.23 | 8,000 PCS |

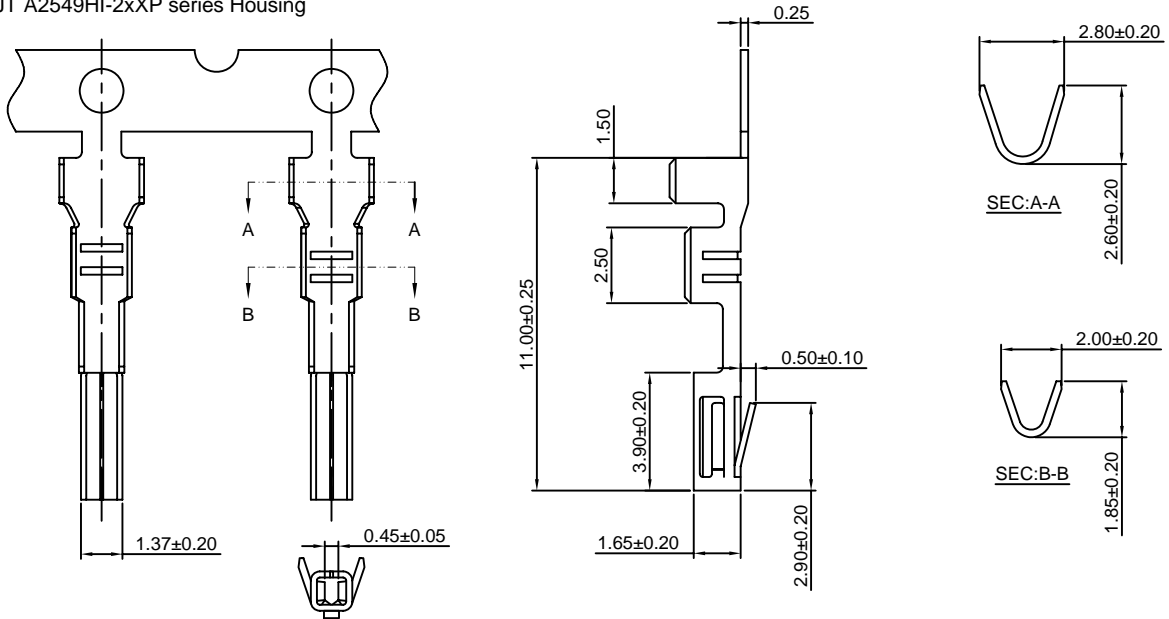
Optional Gold plating available but MOQ requested

**A2549-T-I**

2.54mm Pitch Crimp Terminal

**Reference Informations:**

\*Used in CJT A2549HI-2xXP series Housing



**Ordering information & Specifications:**

Unit:mm

| Part NO.   | Wire Range | Insulation O.D. | Material        | Finish           | Qty/reel   |
|------------|------------|-----------------|-----------------|------------------|------------|
| A2549-TP-I | AWG#20-#24 | 1.55mm(max)     | Phosphor Bronze | Tin over Nickel  | 10,000 PCS |
| A2549-GP-I | AWG#20-#24 | 1.55mm(max)     | Phosphor Bronze | Gold over Nickel | 10,000 PCS |

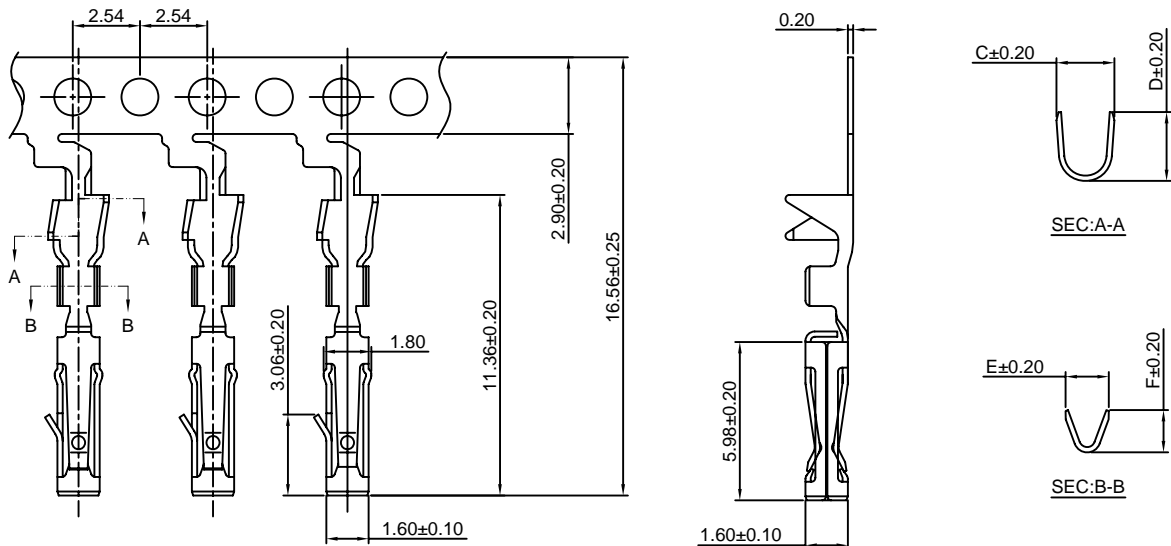
Optional Gold plating available but MOQ requested

**A2549-T-K**

2.54mm Pitch Crimp Terminal

**Reference Informations:**

\*Used in CJT A2549HK-XP,A2549HK-2xXP series Housing



**Ordering information & Specifications:**

Unit:mm

| Part NO      | Wire Range | Insulation O.D. | Material        | Finish           | C    | D    | E    | F    | Qty/reel   |
|--------------|------------|-----------------|-----------------|------------------|------|------|------|------|------------|
| A2549-TP-K   | AWG#22-#30 | 1.50mm(max)     | Phosphor Bronze | Tin over Nickel  | 2.19 | 2.60 | 1.64 | 1.60 | 15,000 PCS |
| A2549-GP-K   | AWG#22-#30 | 1.50mm(max)     | Phosphor Bronze | Gold over Nickel | 2.19 | 2.60 | 1.64 | 1.60 | 15,000 PCS |
| A2549-TP-K-H | AWG#20-#22 | 1.60mm(max)     | Phosphor Bronze | Tin over Nickel  | 2.40 | 2.20 | 2.10 | 2.00 | 15,000 PCS |
| A2549-GP-K-H | AWG#20-#22 | 1.60mm(max)     | Phosphor Bronze | Gold over Nickel | 2.40 | 2.20 | 2.10 | 2.00 | 15,000 PCS |

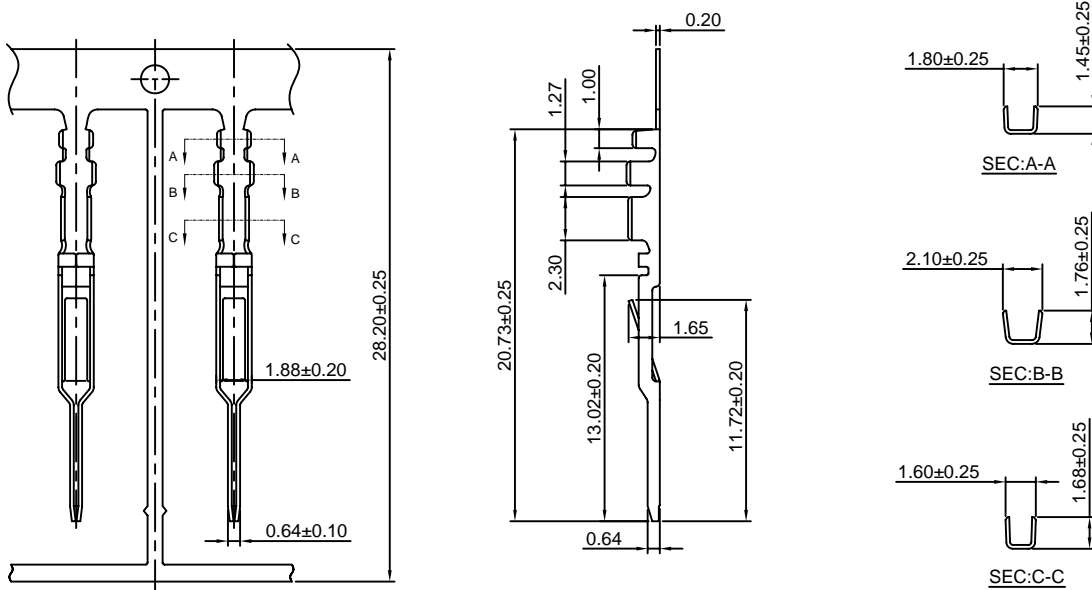
Optional Gold plating available but MOQ requested

### A2549M-T

2.54mm Pitch Crimp Terminal

**Reference Informations:**

\*Used in CJT A2549HM-XP, A2549HM-2xXP series Housing



Ordering information & Specifications:

Unit:mm

| Part NO.  | Wire Range | Insulation O.D. | Material        | Finish           | Qty/reel   |
|-----------|------------|-----------------|-----------------|------------------|------------|
| A2549M-TP | AWG#22-#26 | 1.55mm(max)     | Phosphor Bronze | Tin over Nickel  | 10,000 PCS |
| A2549M-GP | AWG#22-#26 | 1.55mm(max)     | Phosphor Bronze | Gold over Nickel | 10,000 PCS |

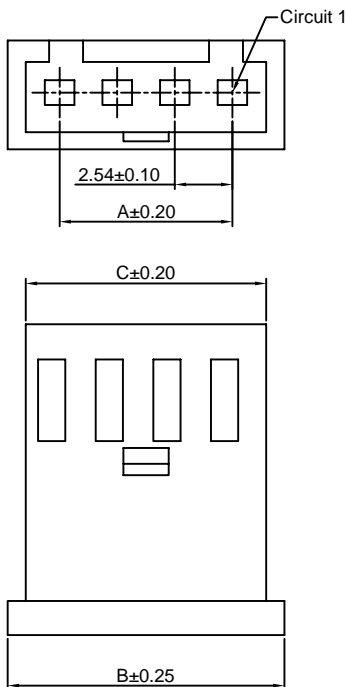
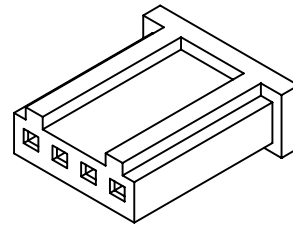
Optional Gold plating available but MOQ requested

### A2549H-XP

2.54mm pitch Housing

**Reference Informations:**

- \*Material:PBT,UL94V-0
- \*Suitable CJT A2547-T-B series Terminal
- \*Mates with CJT A2549HM-XP series Housing or A2549WV,WR-XP,A2547WVE,WRE-XP series Wafer
- \*Color:Black



**Ordering Information:**

A2549H-XP - \*\*\*  
1 2

- Part No.
- Material:  
(Blank):PBT,UL94V-0  
GWT:PBT,UL94V-0,GWT 750°C

**Ordering Information & Dimensions:**

| PART NO. | Dimensions |       |       |
|----------|------------|-------|-------|
|          | A          | B     | C     |
| 2P       | 2.54       | 7.10  | 5.60  |
| 3P       | 5.08       | 9.64  | 8.14  |
| 4P       | 7.62       | 12.18 | 10.68 |
| 5P       | 10.16      | 14.72 | 13.22 |
| 6P       | 12.70      | 17.26 | 15.76 |
| 7P       | 15.24      | 19.80 | 18.30 |
| 8P       | 17.78      | 22.34 | 20.84 |
| 9P       | 20.32      | 24.88 | 23.38 |
| 10P      | 22.86      | 27.42 | 25.92 |
| 11P      | 25.40      | 29.96 | 28.46 |
| 12P      | 27.94      | 32.50 | 31.00 |
| 13P      | 30.48      | 35.04 | 33.54 |
| 14P      | 33.02      | 37.58 | 36.08 |
| 15P      | 35.56      | 40.12 | 38.62 |
| 16P      | 38.10      | 42.66 | 41.16 |
| 17P      | 40.64      | 45.20 | 43.70 |
| 18P      | 43.18      | 47.74 | 46.24 |
| 19P      | 45.72      | 50.28 | 48.78 |
| 20P      | 48.26      | 52.82 | 51.32 |
| 21P      | 50.80      | 55.36 | 53.86 |
| 22P      | 53.34      | 57.90 | 56.40 |

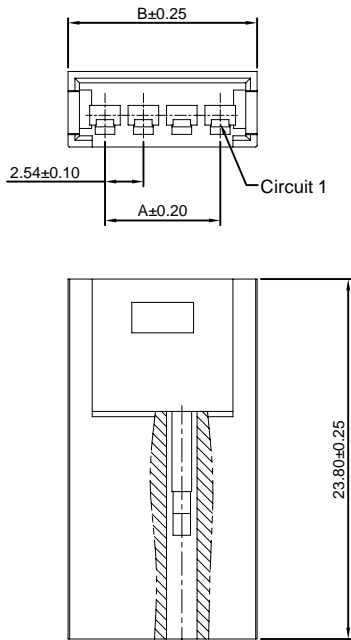
Unit: mm

### A2549HM-XP

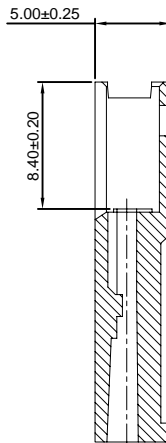
2.54mm pitch Housing

**Reference Informations:**

- \*Material:PBT, UL94V-0
- \*Suitable CJT A2549M-T series Terminal
- \*Mates with CJT A2549H-XP series Housing
- \*Color:Black



Ordering Information:  
A2549HM-XP - \*\*\*  
 $\frac{1}{2}$   
 1.Part No.  
 2.Material:  
 (Blank): PBT,UL94V-0  
 GWT: PBT,UL94V-0 GWT 750°C



**Ordering Information & Dimensions:**

| PART NO. | Dimensions |       |
|----------|------------|-------|
|          | A          | B     |
| 2P       | 2.54       | 7.42  |
| 3P       | 5.08       | 9.96  |
| 4P       | 7.62       | 12.50 |
| 5P       | 10.16      | 15.04 |
| 6P       | 12.70      | 17.58 |
| 7P       | 15.24      | 20.12 |
| 8P       | 17.78      | 22.66 |
| 9P       | 20.32      | 25.20 |
| 10P      | 22.86      | 27.74 |
| 11P      | 25.40      | 30.28 |
| 12P      | 27.94      | 32.82 |
| 13P      | 30.48      | 35.36 |
| 14P      | 33.02      | 37.90 |
| 15P      | 35.56      | 40.44 |
| 16P      | 38.10      | 42.98 |
| 17P      | 40.64      | 45.52 |
| 18P      | 43.18      | 48.06 |
| 19P      | 45.72      | 50.60 |
| 20P      | 48.26      | 53.14 |

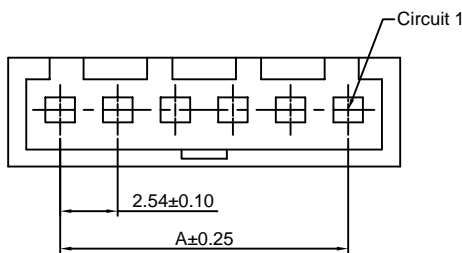
Unit: mm

### A2549HA-XP

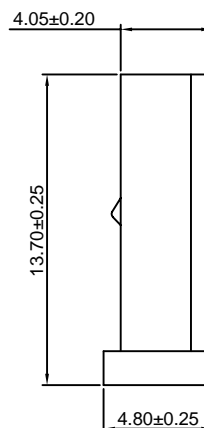
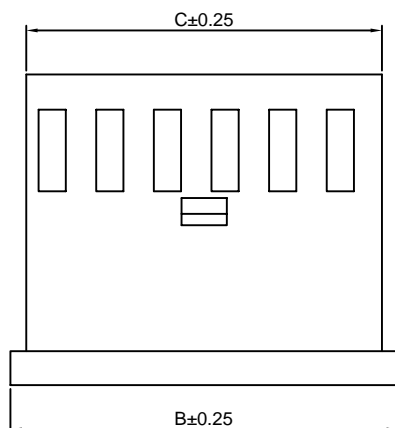
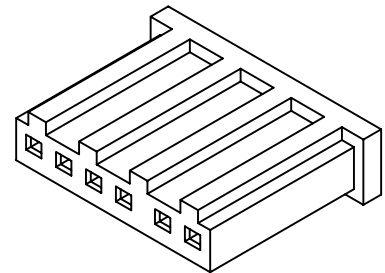
2.54mm pitch Housing

**Reference Informations:**

- \*Material:PBT, UL94V-0
- \*Suitable CJT A2547-T-B series Terminal
- \*Mates with CJT A2549WV,WR-XP,A2547WVE,WRE-XP series Wafer
- \*Color:Black



Ordering Information:  
A2549HA-XP - \*\*\*  
 $\frac{1}{2}$   
 1.Part No.  
 2.Material:  
 (Blank): PBT,UL94V-0  
 GWT: PBT,UL94V-0 GWT 750°C



**Ordering Information & Dimensions:**

| PART NO. | Dimensions |       |       |
|----------|------------|-------|-------|
|          | A          | B     | C     |
| 2P       | 2.54       | 7.10  | 5.60  |
| 4P       | 7.62       | 12.20 | 10.68 |
| 6P       | 12.70      | 17.30 | 15.76 |
| 8P       | 17.78      | 22.30 | 20.84 |
| 9P       | 20.32      | 24.84 | 23.38 |
| 10P      | 22.86      | 27.38 | 25.92 |
| 12P      | 27.94      | 32.46 | 31.00 |
| 15P      | 35.56      | 41.08 | 38.64 |
| 22P      | 53.34      | 58.86 | 56.40 |

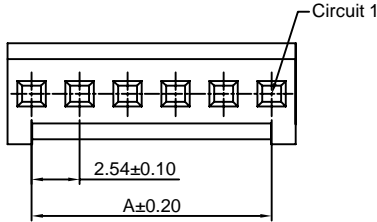
Unit: mm

### A2549HB-XP

2.54mm pitch Single Row Housing

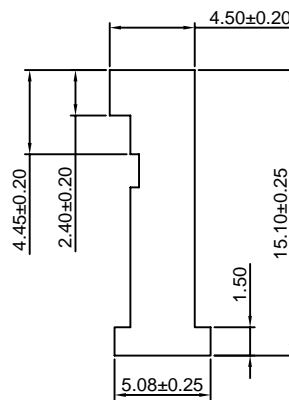
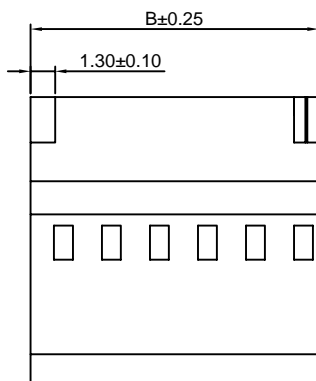
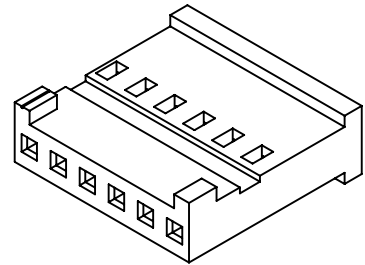
**Reference Informations:**

- \*Material:Nylon 66+15%GF,UL94V-0
- \*Suitable CJT A2549-T-A series Terminal
- \*Mates with CJT A2549WVB,WRB-XP series Wafer
- \*Color:Blue



Ordering Information:  
A2549HB-XP - \*\*\* - \*\*  
1 2 3

- 1.Part No.
- 2.Material:  
(blank): Nylon 66,UL94V-0  
GWT: Nylon 66,UL94V-0 GWT 750 °C
- 3.Color:  
(blank):Blue  
BK:Black



**Ordering Information & Dimensions:**

| PART NO. | Dimensions |       |
|----------|------------|-------|
|          | A          | B     |
| 2P       | 2.54       | 5.08  |
| 3P       | 5.08       | 7.62  |
| 4P       | 7.62       | 10.16 |
| 5P       | 10.16      | 12.70 |
| 6P       | 12.70      | 15.24 |
| 7P       | 15.24      | 17.78 |
| 8P       | 17.78      | 20.32 |
| 9P       | 20.32      | 22.86 |
| 10P      | 22.86      | 25.40 |
| 12P      | 27.94      | 30.48 |
| 15P      | 35.56      | 38.10 |
| 18P      | 43.18      | 45.72 |

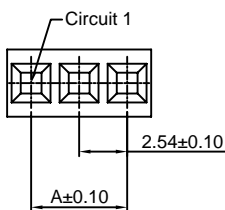
Unit: mm

### A2549HC-XP

2.54mm pitch Single Row Housing

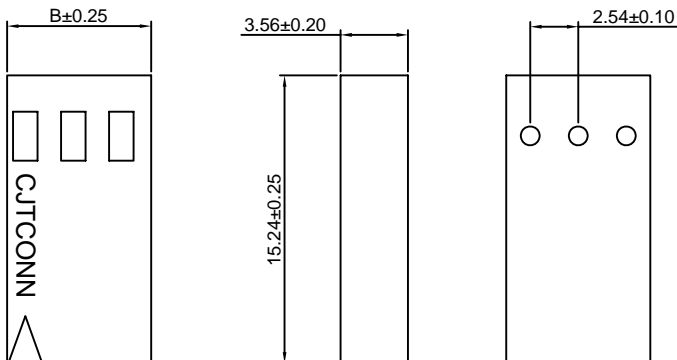
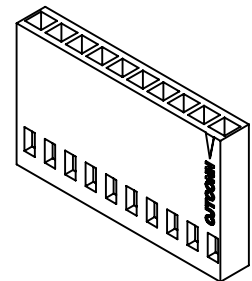
**Reference Informations:**

- \*Material:PBT,UL94V-0
- \*Suitable CJT A2549-T-C series Terminal
- \*Mates with CJT A2541 series Wafer
- \*Color:Black



Ordering Information:  
A2549HC-XP - \*\*\*  
1 2

- 1.Part No.
- 2.Material:  
(Blank): PBT,UL94V-0  
GWT: PBT,UL94V-0 GWT 750 °C



**Ordering Information & Dimensions:**

| PART NO. | Dimensions |       | PART NO. | Dimensions |       |
|----------|------------|-------|----------|------------|-------|
|          | A          | B     |          | A          | B     |
| 3P       | 5.08       | 7.62  | 20P      | 48.26      | 50.80 |
| 4P       | 7.62       | 10.16 | 21P      | 50.80      | 53.34 |
| 5P       | 10.16      | 12.70 | 22P      | 53.34      | 55.88 |
| 6P       | 12.70      | 15.24 | 23P      | 55.88      | 58.42 |
| 7P       | 15.24      | 17.78 | 24P      | 58.42      | 60.96 |
| 8P       | 17.78      | 20.32 | 25P      | 60.96      | 63.50 |
| 9P       | 20.32      | 22.86 | 26P      | 63.50      | 66.04 |
| 10P      | 22.86      | 25.40 | 27P      | 66.04      | 68.58 |
| 11P      | 25.40      | 27.94 | 28P      | 68.58      | 71.12 |
| 12P      | 27.94      | 30.48 | 29P      | 71.12      | 73.66 |
| 13P      | 30.48      | 33.02 | 30P      | 73.66      | 76.20 |
| 14P      | 33.02      | 35.56 | 31P      | 76.20      | 78.74 |
| 15P      | 35.56      | 38.10 | 32P      | 78.74      | 81.28 |
| 16P      | 38.10      | 40.64 | 33P      | 81.28      | 83.82 |
| 17P      | 40.64      | 43.18 | 34P      | 83.82      | 86.36 |
| 18P      | 43.18      | 45.72 | 35P      | 86.36      | 88.90 |
| 19P      | 45.72      | 48.26 | 36P      | 88.90      | 91.44 |

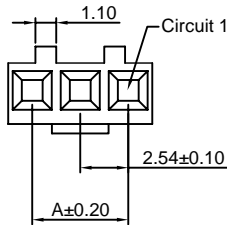
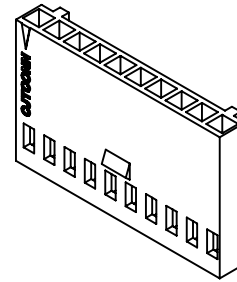
Unit: mm

### A2549HD-XP

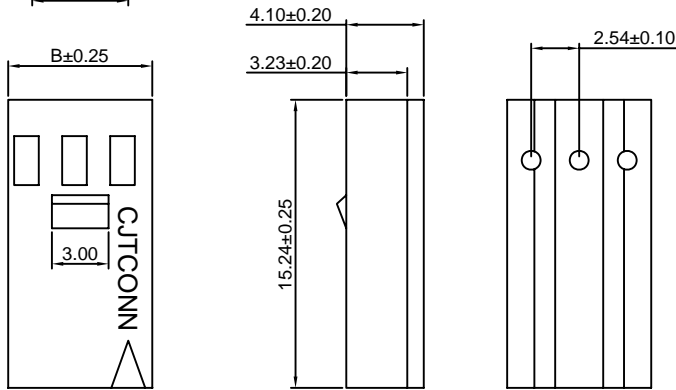
2.54mm pitch Single Row Housing

**Reference Informations:**

- \*Material:PBT,UL94V-0
- \*Suitable CJT A2549-T-C series Terminal
- \*Mates with CJT A2547WVF,WRF-XP series Wafer
- \*Color:Black



Ordering Information:  
**A2549HD-XP - \*\*\***  
 1 2  
 1.Part No.  
 2.Material:  
 (Blank): PBT,UL94V-0  
 GWT: PBT,UL94V-0 GWT 750 °C



**Ordering Information & Dimensions:**

| PART NO. | Dimensions |       | PART NO. | Dimensions |       |
|----------|------------|-------|----------|------------|-------|
|          | A          | B     |          | A          | B     |
| 3P       | 5.08       | 7.62  | 20P      | 48.26      | 50.80 |
| 4P       | 7.62       | 10.16 | 21P      | 50.80      | 53.34 |
| 5P       | 10.16      | 12.70 | 22P      | 53.34      | 55.88 |
| 6P       | 12.70      | 15.24 | 23P      | 55.88      | 58.42 |
| 7P       | 15.24      | 17.78 | 24P      | 58.42      | 60.96 |
| 8P       | 17.78      | 20.32 | 25P      | 60.96      | 63.50 |
| 9P       | 20.32      | 22.86 | 26P      | 63.50      | 66.04 |
| 10P      | 22.86      | 25.40 | 27P      | 66.04      | 68.58 |
| 11P      | 25.40      | 27.94 | 28P      | 68.58      | 71.12 |
| 12P      | 27.94      | 30.48 | 29P      | 71.12      | 73.66 |
| 13P      | 30.48      | 33.02 | 30P      | 73.66      | 76.20 |
| 14P      | 33.02      | 35.56 | 31P      | 76.20      | 78.74 |
| 15P      | 35.56      | 38.10 | 32P      | 78.74      | 81.28 |
| 16P      | 38.10      | 40.64 | 33P      | 81.28      | 83.82 |
| 17P      | 40.64      | 43.18 | 34P      | 83.82      | 86.36 |
| 18P      | 43.18      | 45.72 | 35P      | 86.36      | 88.90 |
| 19P      | 45.72      | 48.26 | 36P      | 88.90      | 91.44 |

Unit: mm

### A2549HK-XP

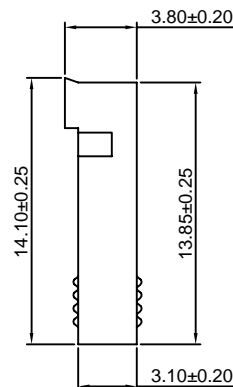
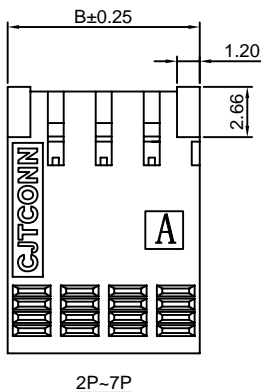
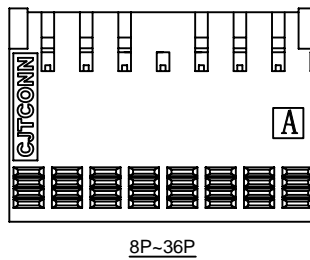
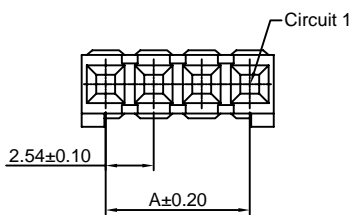
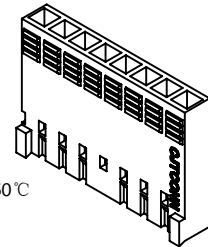
2.54mm pitch Single Row Housing

**Reference Informations:**

- \*Material:PBT,UL94V-0
- \*Suitable CJT A2549-T-K series Terminal
- \*Mates with CJT A2549WVK,WRK-XP series Wafer
- \*Color:Blue

**Ordering Information:**

**A2549HK-XP - \*\*\***  
 1 2  
 1.Part No.  
 2.Material:  
 (Blank): PBT,UL94V-0  
 GWT: PBT,UL94V-0 GWT 750 °C



**Ordering Information & Dimensions:**

| PART NO. | Dimensions |       | PART NO. | Dimensions |       |
|----------|------------|-------|----------|------------|-------|
|          | A          | B     |          | A          | B     |
| 2P       | 2.54       | 5.08  | 20P      | 48.26      | 50.80 |
| 3P       | 5.08       | 7.62  | 21P      | 50.80      | 53.34 |
| 4P       | 7.62       | 10.16 | 22P      | 53.34      | 55.88 |
| 5P       | 10.16      | 12.70 | 23P      | 55.88      | 58.42 |
| 6P       | 12.70      | 15.24 | 24P      | 58.42      | 60.96 |
| 7P       | 15.24      | 17.78 | 25P      | 60.96      | 63.50 |
| 8P       | 17.78      | 20.32 | 26P      | 63.50      | 66.04 |
| 9P       | 20.32      | 22.86 | 27P      | 66.04      | 68.58 |
| 10P      | 22.86      | 25.40 | 28P      | 68.58      | 71.12 |
| 11P      | 25.40      | 27.94 | 29P      | 71.12      | 73.66 |
| 12P      | 27.94      | 30.48 | 30P      | 73.66      | 76.20 |
| 13P      | 30.48      | 33.02 | 31P      | 76.20      | 78.74 |
| 14P      | 33.02      | 35.56 | 32P      | 78.74      | 81.28 |
| 15P      | 35.56      | 38.10 | 33P      | 81.28      | 83.82 |
| 16P      | 38.10      | 40.64 | 34P      | 83.82      | 86.36 |
| 17P      | 40.64      | 43.18 | 35P      | 86.36      | 88.90 |
| 18P      | 43.18      | 45.72 | 36P      | 88.90      | 91.44 |
| 19P      | 45.72      | 48.26 |          |            |       |

Unit: mm

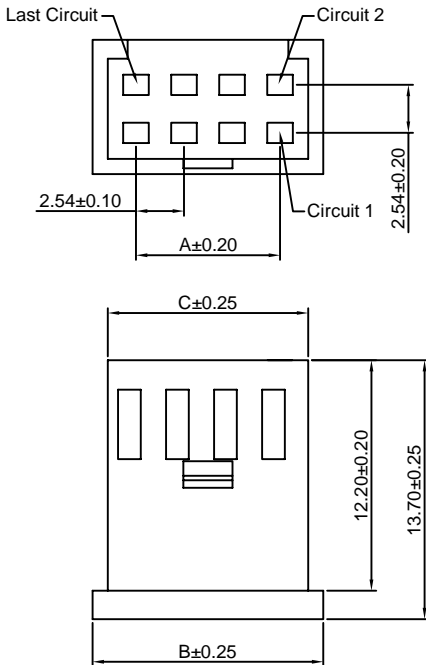
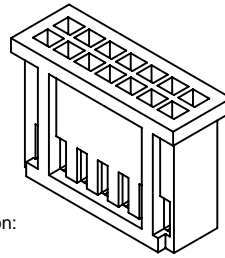


### A2549H-2xXP

2.54mm pitch Dual Row Housing

**Reference Informations:**

- \*Material: PBT, UL94V-0
- \*Suitable CJT A2547-T-B series Terminal
- \*Mates with CJT A2549HM-2xXP series Housing or A2549WV, WR-2xXP series Wafer
- \*Color: Black



Ordering Information:  
A2549H-2xXP - \*\*\*  
1 2

1. Part No.  
2. Material:  
(Blank): PBT, UL94V-0  
GWT: PBT, UL94V-0 GWT 750°C

**Ordering Information & Dimensions:**

| PART NO. | Dimensions |       |       |
|----------|------------|-------|-------|
|          | A          | B     | C     |
| 2x2P     | 2.54       | 7.10  | 5.60  |
| 2x3P     | 5.08       | 9.64  | 8.14  |
| 2x4P     | 7.62       | 12.18 | 10.68 |
| 2x5P     | 10.16      | 14.72 | 13.22 |
| 2x6P     | 12.70      | 17.26 | 15.76 |
| 2x7P     | 15.24      | 19.80 | 18.30 |
| 2x8P     | 17.78      | 22.34 | 20.84 |
| 2x9P     | 20.32      | 24.88 | 23.38 |
| 2x10P    | 22.86      | 27.42 | 25.92 |
| 2x11P    | 25.40      | 29.96 | 28.46 |
| 2x12P    | 27.94      | 32.50 | 31.00 |
| 2x13P    | 30.48      | 35.04 | 33.54 |
| 2x14P    | 33.02      | 37.58 | 36.08 |
| 2x15P    | 35.56      | 40.12 | 38.62 |
| 2x16P    | 38.10      | 42.66 | 41.16 |
| 2x17P    | 40.64      | 45.20 | 43.70 |
| 2x18P    | 43.18      | 47.74 | 46.24 |
| 2x19P    | 45.72      | 50.28 | 48.78 |
| 2x20P    | 48.26      | 52.82 | 51.32 |
| 2x21P    | 50.80      | 55.36 | 53.86 |
| 2x22P    | 53.34      | 57.90 | 56.40 |

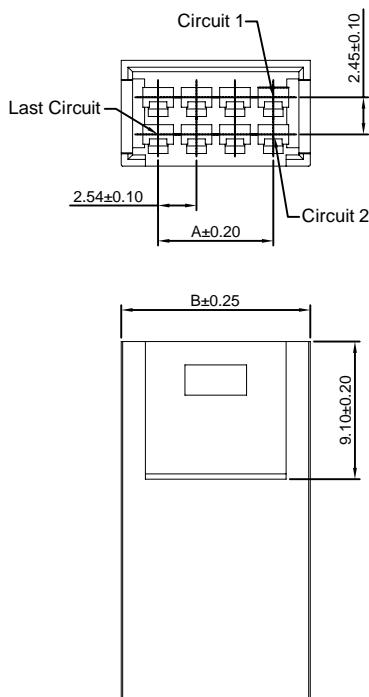
Unit: mm

### A2549HM-2xXP

2.54mm pitch Dual Row Housing

**Reference Informations:**

- \*Material: PBT, UL94V-0
- \*Suitable CJT A2549M-T series Terminal
- \*Mates with CJT A2549H-2xXP series Dual Row Housing
- \*Color: Black



Ordering Information:  
A2549HM-2xXP - \*\*\*  
1 2

1. Part No.  
2. Material:  
(Blank): PBT, UL94V-0  
GWT: PBT, UL94V-0 GWT 750°C

**Ordering Information & Dimensions:**

| PART NO. | Dimensions |       |
|----------|------------|-------|
|          | A          | B     |
| 2x2P     | 2.54       | 7.42  |
| 2x3P     | 5.08       | 9.96  |
| 2x4P     | 7.62       | 12.50 |
| 2x5P     | 10.16      | 15.04 |
| 2x6P     | 12.70      | 17.58 |
| 2x7P     | 15.24      | 20.12 |
| 2x8P     | 17.78      | 22.66 |
| 2x9P     | 20.32      | 25.20 |
| 2x10P    | 22.86      | 27.74 |
| 2x11P    | 25.40      | 30.28 |
| 2x12P    | 27.94      | 32.82 |
| 2x13P    | 30.48      | 35.36 |
| 2x14P    | 33.02      | 37.90 |
| 2x15P    | 35.56      | 40.44 |
| 2x16P    | 38.10      | 42.98 |
| 2x17P    | 40.64      | 45.52 |
| 2x18P    | 43.18      | 48.06 |
| 2x19P    | 45.72      | 50.60 |
| 2x20P    | 48.26      | 53.14 |

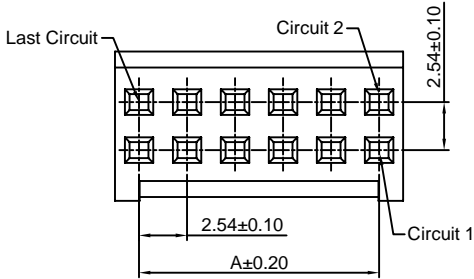
Unit: mm

### A2549HB-2xXP

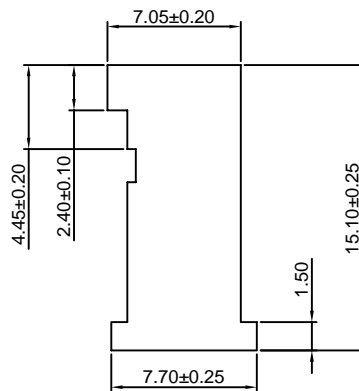
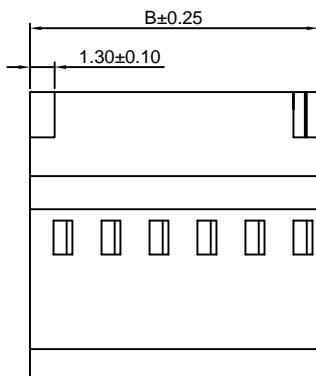
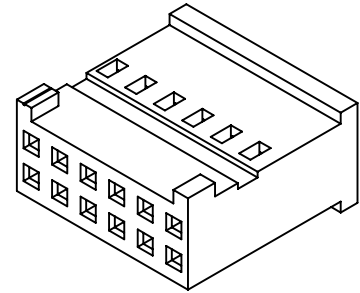
2.54mm pitch Dual Row Housing

**Reference Informations:**

- \*Material: Nylon 66 ,UL94V-0
- \*Suitable CJT A2549-T-A series Terminal
- \*Mates with CJT A2549WVB,WRB-2xXP series Dual Row Wafer
- \*Color: Blue



Ordering Information:  
**A2549HB-2xXP - \*\*\* - \*\***  
 1 2 3  
 1.Part No.  
 2.Material:  
 (blank): Nylon 66,UL94V-0  
 GWT: Nylon 66,UL94V-0,GWT 750 °C  
 3.Color:  
 (blank): Blue  
 BK: Black



**Ordering Information & Dimensions:**

| PART NO. | Dimensions |       |
|----------|------------|-------|
|          | A          | B     |
| 2x3P     | 5.08       | 7.62  |
| 2x4P     | 7.62       | 10.16 |
| 2x5P     | 10.16      | 12.70 |
| 2x6P     | 12.70      | 15.24 |
| 2x7P     | 15.24      | 17.78 |
| 2x8P     | 17.78      | 20.32 |
| 2x9P     | 20.32      | 22.86 |
| 2x10P    | 22.86      | 25.40 |
| 2x12P    | 27.94      | 30.48 |
| 2x15P    | 35.56      | 38.10 |
| 2x18P    | 43.18      | 45.72 |

Unit: mm

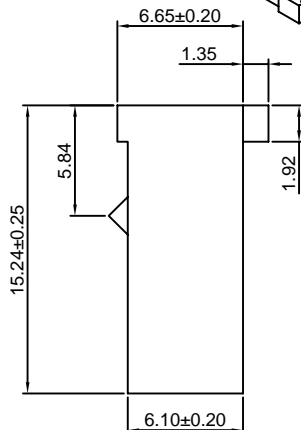
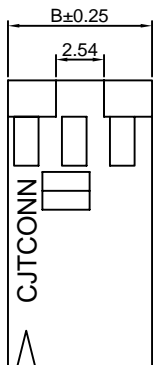
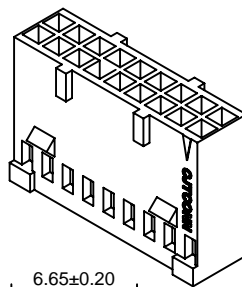
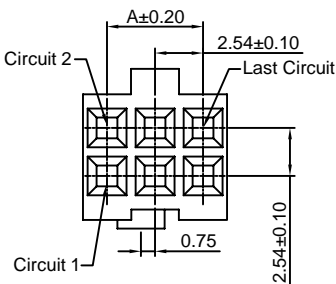
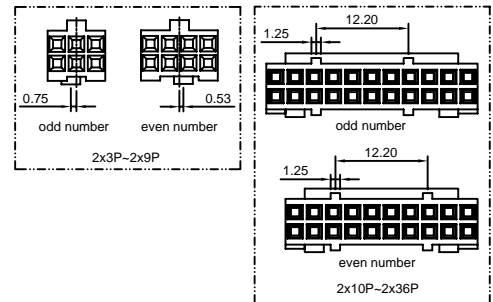
### A2549HC-2xXP

2.54mm pitch Dual Row Housing

**Reference Informations:**

- \*Material: PBT,UL94V-0
- \*Suitable CJT A2549-T-C series Terminal
- \*Color: Black

Ordering Information:  
**A2549HC-2xXP - \*\*\***  
 1 2  
 1.Part No.  
 2.Material:  
 (Blank): PBT,UL94V-0  
 GWT: PBT,UL94V-0 GWT 750 °C



**Ordering Information & Dimensions:**

| PART NO. | Dimensions |       | PART NO. | Dimensions |       |
|----------|------------|-------|----------|------------|-------|
|          | A          | B     |          | A          | B     |
| 2x3P     | 5.08       | 7.62  | 2x20P    | 48.26      | 50.80 |
| 2x4P     | 7.62       | 10.16 | 2x21P    | 50.80      | 53.34 |
| 2x5P     | 10.16      | 12.70 | 2x22P    | 53.34      | 55.88 |
| 2x6P     | 12.70      | 15.24 | 2x23P    | 55.88      | 58.42 |
| 2x7P     | 15.24      | 17.78 | 2x24P    | 58.42      | 60.96 |
| 2x8P     | 17.78      | 20.32 | 2x25P    | 60.96      | 63.50 |
| 2x9P     | 20.32      | 22.86 | 2x26P    | 63.50      | 66.04 |
| 2x10P    | 22.86      | 25.40 | 2x27P    | 66.04      | 68.58 |
| 2x11P    | 25.40      | 27.94 | 2x28P    | 68.58      | 71.12 |
| 2x12P    | 27.94      | 30.48 | 2x29P    | 71.12      | 73.66 |
| 2x13P    | 30.48      | 33.02 | 2x30P    | 73.66      | 76.20 |
| 2x14P    | 33.02      | 35.56 | 2x31P    | 76.20      | 78.74 |
| 2x15P    | 35.56      | 38.10 | 2x32P    | 78.74      | 81.28 |
| 2x16P    | 38.10      | 40.64 | 2x33P    | 81.28      | 83.82 |
| 2x17P    | 40.64      | 43.18 | 2x34P    | 83.82      | 86.36 |
| 2x18P    | 43.18      | 45.72 | 2x35P    | 86.36      | 88.90 |
| 2x19P    | 45.72      | 48.26 | 2x36P    | 88.90      | 91.44 |

Unit: mm

### A2549HD-2xXP

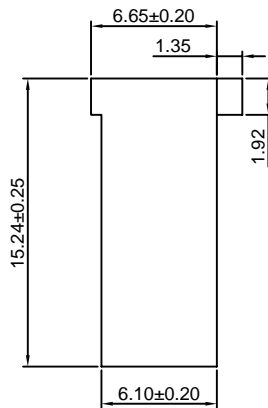
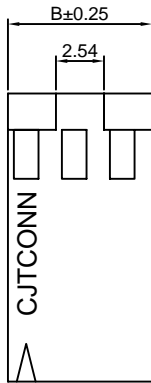
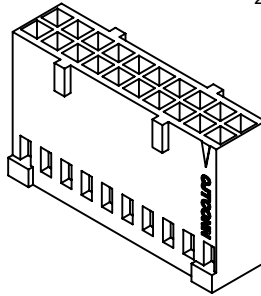
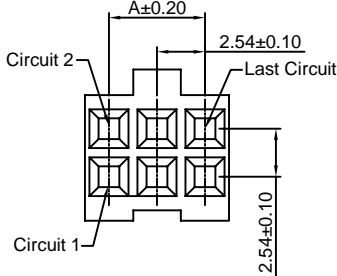
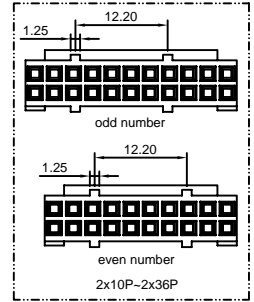
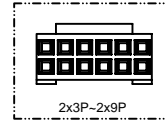
2.54mm pitch Dual Row Housing

**Reference Informations:**

- \*Material:PBT,UL94V-0
- \*Suitable CJT A2549-T-C series Terminal
- \*Color:Black

**Ordering Information:**

- A2549HD-2xXP - \*\*\*  
 1 2  
 1.Part No.  
 2.Material:  
 (Blank): PBT,UL94V-0  
 GWT: PBT,UL94V-0 GWT 750 °C



**Ordering Information & Dimensions:**

| PART NO. | Dimensions |       | PART NO. | Dimensions |       |
|----------|------------|-------|----------|------------|-------|
|          | A          | B     |          | A          | B     |
| 2x3P     | 5.08       | 7.62  | 2x20P    | 48.26      | 50.80 |
| 2x4P     | 7.62       | 10.16 | 2x21P    | 50.80      | 53.34 |
| 2x5P     | 10.16      | 12.70 | 2x22P    | 53.34      | 55.88 |
| 2x6P     | 12.70      | 15.24 | 2x23P    | 55.88      | 58.42 |
| 2x7P     | 15.24      | 17.78 | 2x24P    | 58.42      | 60.96 |
| 2x8P     | 17.78      | 20.32 | 2x25P    | 60.96      | 63.50 |
| 2x9P     | 20.32      | 22.86 | 2x26P    | 63.50      | 66.04 |
| 2x10P    | 22.86      | 25.40 | 2x27P    | 66.04      | 68.58 |
| 2x11P    | 25.40      | 27.94 | 2x28P    | 68.58      | 71.12 |
| 2x12P    | 27.94      | 30.48 | 2x29P    | 71.12      | 73.66 |
| 2x13P    | 30.48      | 33.02 | 2x30P    | 73.66      | 76.20 |
| 2x14P    | 33.02      | 35.56 | 2x31P    | 76.20      | 78.74 |
| 2x15P    | 35.56      | 38.10 | 2x32P    | 78.74      | 81.28 |
| 2x16P    | 38.10      | 40.64 | 2x33P    | 81.28      | 83.82 |
| 2x17P    | 40.64      | 43.18 | 2x34P    | 83.82      | 86.36 |
| 2x18P    | 43.18      | 45.72 | 2x35P    | 86.36      | 88.90 |
| 2x19P    | 45.72      | 48.26 | 2x36P    | 88.90      | 91.44 |

Unit: mm

### A2549HE-2xXP

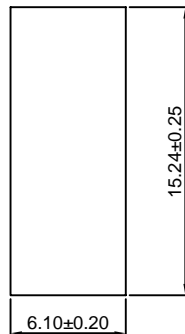
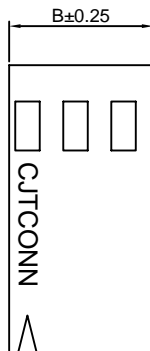
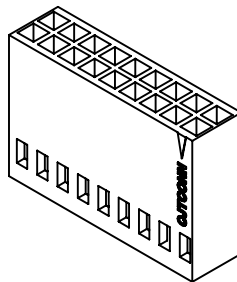
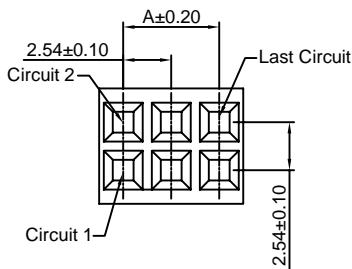
2.54mm pitch Dual Row Housing

**Reference Informations:**

- \*Material:PBT,UL94V-0
- \*Suitable CJT A2549-T-C series Terminal
- \*Mates with CJT A2541 series Wafer
- \*Color:Black

**Ordering Information:**

- A2549HE-2xXP - \*\*\*  
 1 2  
 1.Part No.  
 2.Material:  
 (Blank): PBT,UL94V-0  
 GWT: PBT,UL94V-0 GWT 750 °C



**Ordering Information & Dimensions:**

| PART NO. | Dimensions |       | PART NO. | Dimensions |       |
|----------|------------|-------|----------|------------|-------|
|          | A          | B     |          | A          | B     |
| 2x3P     | 5.08       | 7.62  | 2x20P    | 48.26      | 50.80 |
| 2x4P     | 7.62       | 10.16 | 2x21P    | 50.80      | 53.34 |
| 2x5P     | 10.16      | 12.70 | 2x22P    | 53.34      | 55.88 |
| 2x6P     | 12.70      | 15.24 | 2x23P    | 55.88      | 58.42 |
| 2x7P     | 15.24      | 17.78 | 2x24P    | 58.42      | 60.96 |
| 2x8P     | 17.78      | 20.32 | 2x25P    | 60.96      | 63.50 |
| 2x9P     | 20.32      | 22.86 | 2x26P    | 63.50      | 66.04 |
| 2x10P    | 22.86      | 25.40 | 2x27P    | 66.04      | 68.58 |
| 2x11P    | 25.40      | 27.94 | 2x28P    | 68.58      | 71.12 |
| 2x12P    | 27.94      | 30.48 | 2x29P    | 71.12      | 73.66 |
| 2x13P    | 30.48      | 33.02 | 2x30P    | 73.66      | 76.20 |
| 2x14P    | 33.02      | 35.56 | 2x31P    | 76.20      | 78.74 |
| 2x15P    | 35.56      | 38.10 | 2x32P    | 78.74      | 81.28 |
| 2x16P    | 38.10      | 40.64 | 2x33P    | 81.28      | 83.82 |
| 2x17P    | 40.64      | 43.18 | 2x34P    | 83.82      | 86.36 |
| 2x18P    | 43.18      | 45.72 | 2x35P    | 86.36      | 88.90 |
| 2x19P    | 45.72      | 48.26 | 2x36P    | 88.90      | 91.44 |

Unit: mm

### A2549HG-2xXP

2.54mm pitch Dual Row Housing

**Reference Informations:**

- \*Material: PBT, UL94V-0
- \*Suitable CJT A2549-T-C series Terminal
- \*Mates with CJT A2541 series Wafer
- \*Color: Black

**Ordering Information:**

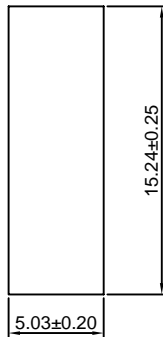
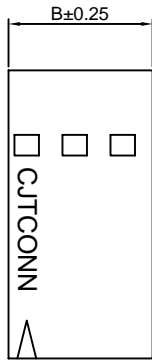
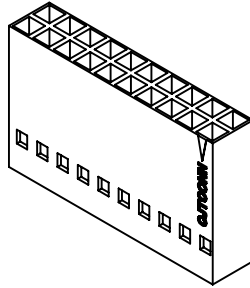
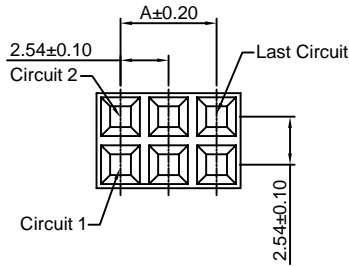
A2549HG-2xXP - \*\*\*  
1 2

1. Part No.

2. Material:

(Blank): PBT, UL94V-0

GWT: PBT, UL94V-0 GWT 750 °C



**Ordering Information & Dimensions:**

| PART NO. | Dimensions |       | PART NO. | Dimensions |       |
|----------|------------|-------|----------|------------|-------|
|          | A          | B     |          | A          | B     |
| 2x3P     | 5.08       | 7.62  | 2x20P    | 48.26      | 50.80 |
| 2x4P     | 7.62       | 10.16 | 2x21P    | 50.80      | 53.34 |
| 2x5P     | 10.16      | 12.70 | 2x22P    | 53.34      | 55.88 |
| 2x6P     | 12.70      | 15.24 | 2x23P    | 55.88      | 58.42 |
| 2x7P     | 15.24      | 17.78 | 2x24P    | 58.42      | 60.96 |
| 2x8P     | 17.78      | 20.32 | 2x25P    | 60.96      | 63.50 |
| 2x9P     | 20.32      | 22.86 | 2x26P    | 63.50      | 66.04 |
| 2x10P    | 22.86      | 25.40 | 2x27P    | 66.04      | 68.58 |
| 2x11P    | 25.40      | 27.94 | 2x28P    | 68.58      | 71.12 |
| 2x12P    | 27.94      | 30.48 | 2x29P    | 71.12      | 73.66 |
| 2x13P    | 30.48      | 33.02 | 2x30P    | 73.66      | 76.20 |
| 2x14P    | 33.02      | 35.56 | 2x31P    | 76.20      | 78.74 |
| 2x15P    | 35.56      | 38.10 | 2x32P    | 78.74      | 81.28 |
| 2x16P    | 38.10      | 40.64 | 2x33P    | 81.28      | 83.82 |
| 2x17P    | 40.64      | 43.18 | 2x34P    | 83.82      | 86.36 |
| 2x18P    | 43.18      | 45.72 | 2x35P    | 86.36      | 88.90 |
| 2x19P    | 45.72      | 48.26 | 2x36P    | 88.90      | 91.44 |

Unit: mm

### A2549HG-N-2xXP

2.54mm pitch Dual Row Housing

**Reference Informations:**

- \*Material: PBT, UL94V-0
- \*Suitable CJT A2549-T-C series Terminal
- \*Mates with CJT A2547WV-N, WR-N-2xXP series Dual Row Wafer
- \*Color: Black

**Ordering Information:**

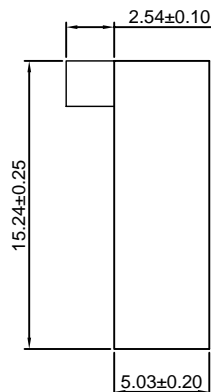
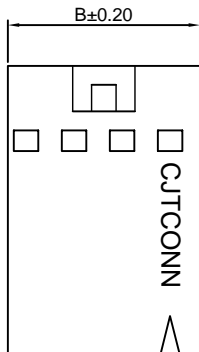
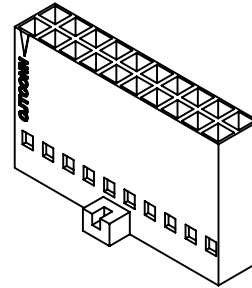
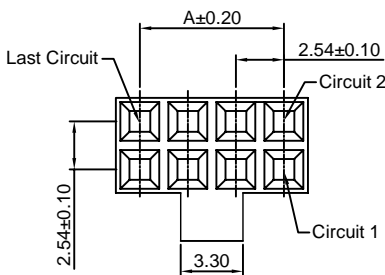
A2549HG-N-2xXP - \*\*\*  
1 2

1. Part No.

2. Material:

(Blank): PBT, UL94V-0

GWT: PBT, UL94V-0 GWT 750 °C



**Ordering Information & Dimensions:**

| PART NO. | Dimensions |       | PART NO. | Dimensions |       |
|----------|------------|-------|----------|------------|-------|
|          | A          | B     |          | A          | B     |
| 2x3P     | 5.08       | 7.62  | 2x20P    | 48.26      | 50.80 |
| 2x4P     | 7.62       | 10.16 | 2x21P    | 50.80      | 53.34 |
| 2x5P     | 10.16      | 12.70 | 2x22P    | 53.34      | 55.88 |
| 2x6P     | 12.70      | 15.24 | 2x23P    | 55.88      | 58.42 |
| 2x7P     | 15.24      | 17.78 | 2x24P    | 58.42      | 60.96 |
| 2x8P     | 17.78      | 20.32 | 2x25P    | 60.96      | 63.50 |
| 2x9P     | 20.32      | 22.86 | 2x26P    | 63.50      | 66.04 |
| 2x10P    | 22.86      | 25.40 | 2x27P    | 66.04      | 68.58 |
| 2x11P    | 25.40      | 27.94 | 2x28P    | 68.58      | 71.12 |
| 2x12P    | 27.94      | 30.48 | 2x29P    | 71.12      | 73.66 |
| 2x13P    | 30.48      | 33.02 | 2x30P    | 73.66      | 76.20 |
| 2x14P    | 33.02      | 35.56 | 2x31P    | 76.20      | 78.74 |
| 2x15P    | 35.56      | 38.10 | 2x32P    | 78.74      | 81.28 |
| 2x16P    | 38.10      | 40.64 | 2x33P    | 81.28      | 83.82 |
| 2x17P    | 40.64      | 43.18 | 2x34P    | 83.82      | 86.36 |
| 2x18P    | 43.18      | 45.72 | 2x35P    | 86.36      | 88.90 |
| 2x19P    | 45.72      | 48.26 | 2x36P    | 88.90      | 91.44 |

Unit: mm

## A2549HK-2xXP

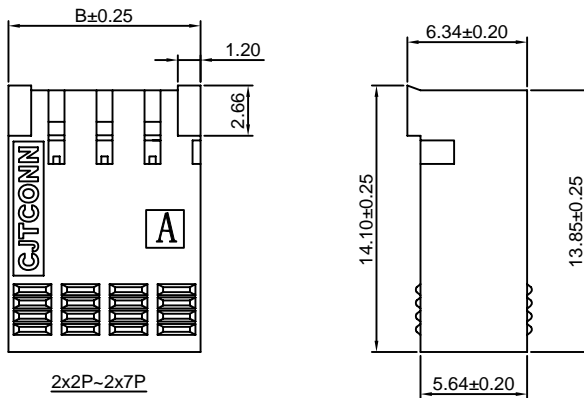
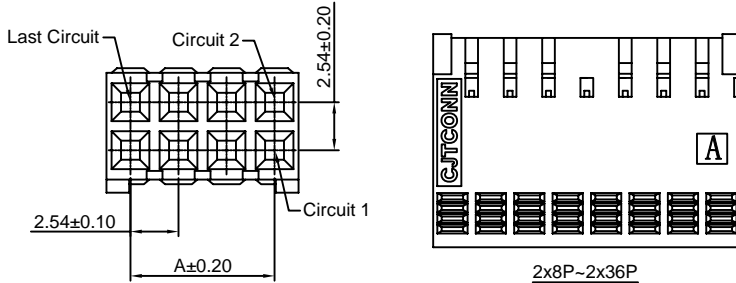
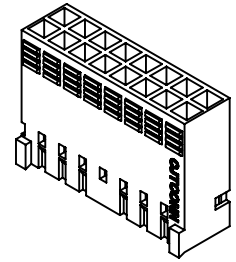
2.54mm pitch Dual Row Housing

**Reference Informations:**

- \*Material: PBT, UL94V-0
- \*Suitable CJT A2549-T-K series Terminal
- \*Mates with CJT A2549WVK, WRK-2xXP series Wafer
- \*Color: Blue

Ordering Information:  
A2549HK-2xXP - \*\*\*  
1 2

1. Part No.  
2. Material:  
(Blank): PBT, UL94V-0  
GWT: PBT, UL94V-0 GWT 750 °C



**Ordering Information & Dimensions:**

| PART NO. | Dimensions |       | PART NO. | Dimensions |       |
|----------|------------|-------|----------|------------|-------|
|          | A          | B     |          | A          | B     |
| 2x3P     | 5.08       | 7.62  | 2x20P    | 48.26      | 50.80 |
| 2x4P     | 7.62       | 10.16 | 2x21P    | 50.80      | 53.34 |
| 2x5P     | 10.16      | 12.70 | 2x22P    | 53.34      | 55.88 |
| 2x6P     | 12.70      | 15.24 | 2x23P    | 55.88      | 58.42 |
| 2x7P     | 15.24      | 17.78 | 2x24P    | 58.42      | 60.96 |
| 2x8P     | 17.78      | 20.32 | 2x25P    | 60.96      | 63.50 |
| 2x9P     | 20.32      | 22.86 | 2x26P    | 63.50      | 66.04 |
| 2x10P    | 22.86      | 25.40 | 2x27P    | 66.04      | 68.58 |
| 2x11P    | 25.40      | 27.94 | 2x28P    | 68.58      | 71.12 |
| 2x12P    | 27.94      | 30.48 | 2x29P    | 71.12      | 73.66 |
| 2x13P    | 30.48      | 33.02 | 2x30P    | 73.66      | 76.20 |
| 2x14P    | 33.02      | 35.56 | 2x31P    | 76.20      | 78.74 |
| 2x15P    | 35.56      | 38.10 | 2x32P    | 78.74      | 81.28 |
| 2x16P    | 38.10      | 40.64 | 2x33P    | 81.28      | 83.82 |
| 2x17P    | 40.64      | 43.18 | 2x34P    | 83.82      | 86.36 |
| 2x18P    | 43.18      | 45.72 | 2x35P    | 86.36      | 88.90 |
| 2x19P    | 45.72      | 48.26 | 2x36P    | 88.90      | 91.44 |

Unit: mm

## A2549HI-2xXP

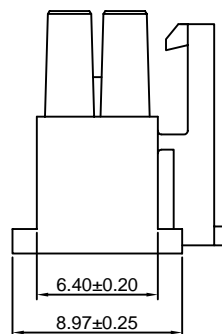
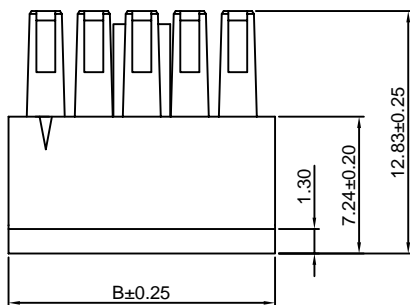
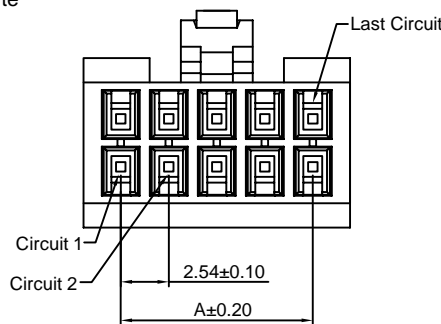
2.54mm pitch Dual Row Housing

**Reference Informations:**

- \*Material: Nylon 66, UL94V-0
- \*Suitable CJT A2549-T-I series Terminal
- \*Mates with CJT A2549WVI, WRI-2xXP, A2549WVI-S-2xXP series Dual Row Wafer
- \*Color: White

Ordering Information:  
A2549HI-2xXP - \*\*\*  
1 2

1. Part No.  
2. Material:  
(Blank): Nylon 66, UL94V-0  
GWT: Nylon 66, UL94V-0, GWT 750 °C



**Ordering Information & Dimensions:**

| PART NO. | Dimensions |       |
|----------|------------|-------|
|          | A          | B     |
| 2x2P     | 2.54       | 6.48  |
| 2x3P     | 5.08       | 9.02  |
| 2x4P     | 7.62       | 11.56 |
| 2x5P     | 10.16      | 14.10 |
| 2x6P     | 12.70      | 16.64 |
| 2x7P     | 15.24      | 19.18 |
| 2x8P     | 17.78      | 21.72 |
| 2x9P     | 20.32      | 24.26 |
| 2x10P    | 22.86      | 26.80 |
| 2x11P    | 25.40      | 29.34 |
| 2x12P    | 27.94      | 31.88 |
| 2x13P    | 30.48      | 34.42 |
| 2x14P    | 33.02      | 36.96 |
| 2x15P    | 35.56      | 39.50 |
| 2x16P    | 38.10      | 42.04 |
| 2x17P    | 40.64      | 44.58 |
| 2x18P    | 43.18      | 47.12 |
| 2x19P    | 45.72      | 49.66 |
| 2x20P    | 48.26      | 52.20 |
| 2x21P    | 50.80      | 54.74 |
| 2x22P    | 53.34      | 57.28 |
| 2x23P    | 55.88      | 59.82 |
| 2x24P    | 58.42      | 62.36 |
| 2x25P    | 60.96      | 64.90 |

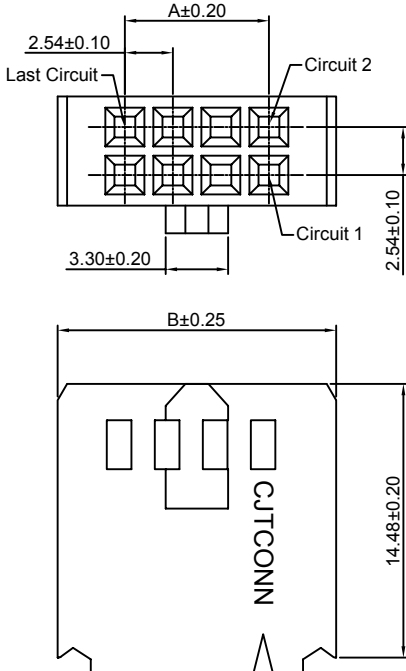
Unit: mm

### A2549HL-2xXP

2.54mm pitch Dual Row Housing

**Reference Informations:**

- \*Material: PBT, UL94V-0
- \*Suitable CJT A2549-T-C series Terminal
- \*Mates with CJT A2547WV, WR, WVC, WRC-2xXP series Wafer
- \*Color: Black



Ordering Information:  
A2549HL-2xXP - \*\*\*  
1 2

1. Part No.
2. Material:  
(Blank): PBT, UL94V-0  
GWT: PBT, UL94V-0, GWT 750°C

**Ordering Information & Dimensions:**

| PART NO. | Dimensions |       | PART NO. | Dimensions |       |
|----------|------------|-------|----------|------------|-------|
|          | A          | B     |          | A          | B     |
| 2x4P     | 7.62       | 14.73 | 2x19P    | 45.72      | 52.83 |
| 2x5P     | 10.16      | 17.27 | 2x20P    | 48.26      | 55.37 |
| 2x6P     | 12.70      | 19.81 | 2x21P    | 50.80      | 57.91 |
| 2x7P     | 15.24      | 22.35 | 2x22P    | 53.34      | 60.45 |
| 2x8P     | 17.78      | 24.89 | 2x23P    | 55.88      | 62.99 |
| 2x9P     | 20.32      | 27.43 | 2x24P    | 58.42      | 65.53 |
| 2x10P    | 22.86      | 29.97 | 2x25P    | 60.96      | 68.07 |
| 2x11P    | 25.40      | 32.51 | 2x26P    | 63.50      | 70.61 |
| 2x12P    | 27.94      | 35.05 | 2x27P    | 66.04      | 73.15 |
| 2x13P    | 30.48      | 37.59 | 2x28P    | 68.58      | 75.69 |
| 2x14P    | 33.02      | 40.13 | 2x29P    | 71.12      | 78.23 |
| 2x15P    | 35.56      | 42.67 | 2x30P    | 73.66      | 80.77 |
| 2x16P    | 38.10      | 45.21 | 2x32P    | 76.20      | 83.31 |
| 2x17P    | 40.64      | 47.75 | 2x32P    | 78.74      | 85.85 |
| 2x18P    | 43.18      | 50.29 |          |            |       |

Unit: mm

### A2549WV-XP

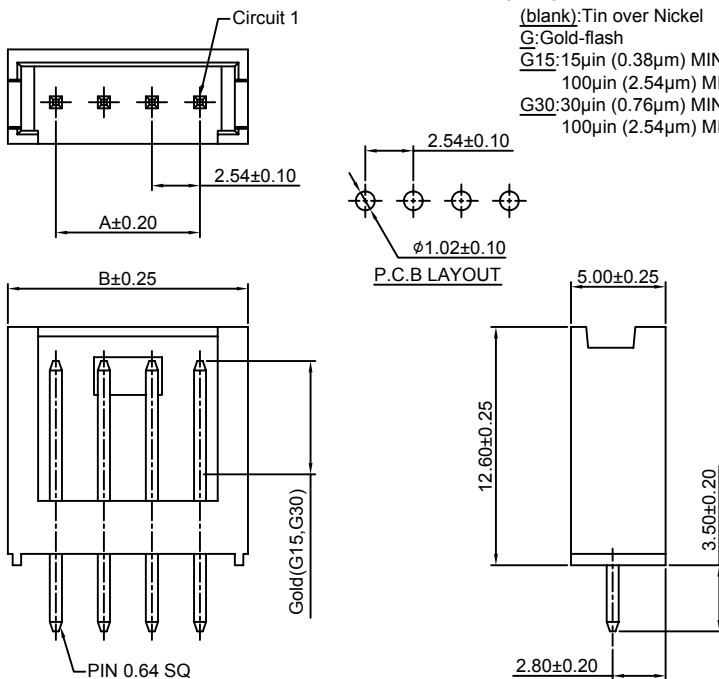
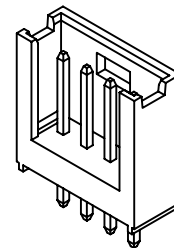
2.54mm pitch 180° Single Row Wafer

**Reference Informations:**

- \*Material: Pin: Brass/Tin over Nickel  
Insulator: PBT, UL94V-0
- \*Mates with CJT A2549H-XP, A2550H-XP-C series Housing
- \*Nylon 6T is available
- \*Color: Black

Ordering Information:  
A2549WV-XP - \*\*\* - \*\*\*  
1 2 3

1. Part No.
2. Material:  
(Blank): PBT, UL94V-0  
GWT: PBT, UL94V-0, GWT 750°C
3. Finish:  
(blank): Tin over Nickel  
G: Gold-flash  
G15: 15µm (0.38µm) MIN. Select Gold  
100µm (2.54µm) MIN. Select Tin  
G30: 30µm (0.76µm) MIN. Select Gold  
100µm (2.54µm) MIN. Select Tin



**Ordering Information & Dimensions:**

| PART NO. | Dimensions |       |
|----------|------------|-------|
|          | A          | B     |
| 2P       | 2.54       | 7.62  |
| 3P       | 5.08       | 10.16 |
| 4P       | 7.62       | 12.70 |
| 5P       | 10.16      | 15.24 |
| 6P       | 12.70      | 17.78 |
| 7P       | 15.24      | 20.32 |
| 8P       | 17.78      | 22.86 |
| 9P       | 20.32      | 25.40 |
| 10P      | 22.86      | 27.94 |
| 11P      | 25.40      | 30.48 |
| 12P      | 27.94      | 33.02 |
| 13P      | 30.48      | 35.56 |
| 14P      | 33.02      | 38.10 |
| 15P      | 35.56      | 40.64 |
| 16P      | 38.10      | 43.18 |
| 17P      | 40.64      | 45.72 |
| 18P      | 43.18      | 48.26 |
| 19P      | 45.72      | 50.80 |
| 20P      | 48.26      | 53.34 |
| 21P      | 50.80      | 55.88 |
| 22P      | 53.34      | 58.42 |

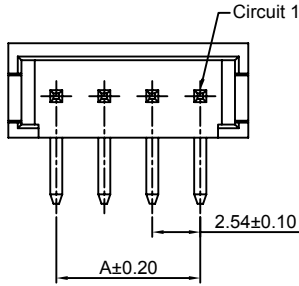
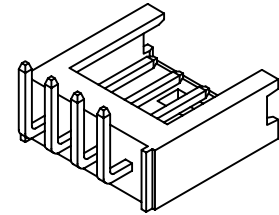
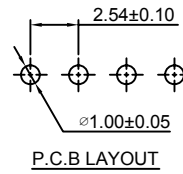
Unit: mm

### A2549WR-XP

2.54mm pitch 90° Single Row Wafer

#### Reference Informations:

- \*Material: Pin: Brass/Tin over Nickel  
Insulator: PBT, UL94V-0
- \*Mates with CJT A2549H-XP, A2550H-XP-C series Housing
- \*Nylon 6T is available
- \*Color: Black



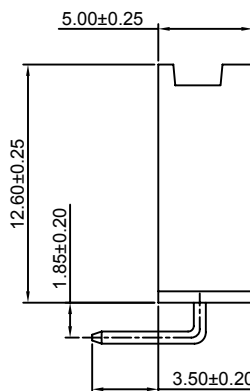
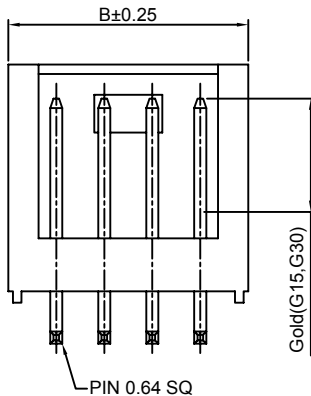
Ordering Information:  
A2549WR-XP - \*\*\* - \*\*\*  
1 2 3

- Part No.
- Material:  
(Blank): PBT, UL94V-0  
GWT: PBT, UL94V-0, GWT 750 °C
- Finish:  
(blank): Tin over Nickel  
G: Gold-flash  
G15: 15µin (0.38µm) MIN. Select Gold  
100µin (2.54µm) MIN. Select Tin  
G30: 30µin (0.76µm) MIN. Select Gold  
100µin (2.54µm) MIN. Select Tin

#### Ordering Information & Dimensions:

| PART NO. | Dimensions |       |
|----------|------------|-------|
|          | A          | B     |
| 2P       | 2.54       | 7.62  |
| 3P       | 5.08       | 10.16 |
| 4P       | 7.62       | 12.70 |
| 5P       | 10.16      | 15.24 |
| 6P       | 12.70      | 17.78 |
| 7P       | 15.24      | 20.32 |
| 8P       | 17.78      | 22.86 |
| 9P       | 20.32      | 25.40 |
| 10P      | 22.86      | 27.94 |
| 11P      | 25.40      | 30.48 |
| 12P      | 27.94      | 33.02 |
| 13P      | 30.48      | 35.56 |
| 14P      | 33.02      | 38.10 |
| 15P      | 35.56      | 40.64 |
| 16P      | 38.10      | 43.18 |
| 17P      | 40.64      | 45.72 |
| 18P      | 43.18      | 48.26 |
| 19P      | 45.72      | 50.80 |
| 20P      | 48.26      | 53.34 |
| 21P      | 50.80      | 55.88 |
| 22P      | 53.34      | 58.42 |

Unit: mm

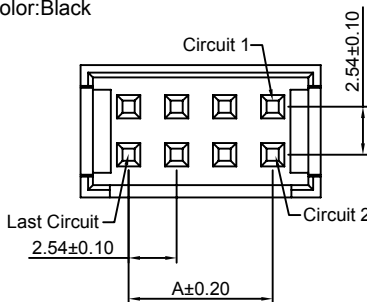
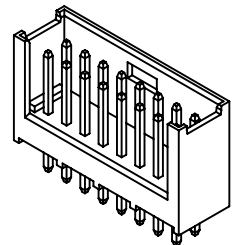
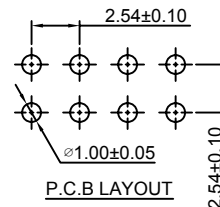


### A2549WV-2xXP

2.54mm pitch 180° Dual Row Wafer

#### Reference Informations:

- \*Material: Pin: Brass/Tin over Nickel  
Insulator: PBT, UL94V-0
- \*Mates with CJT A2549H-2xXP series Housing
- \*Color: Black



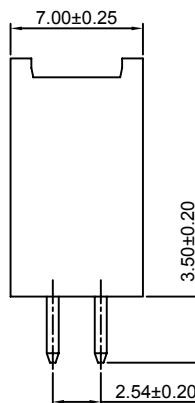
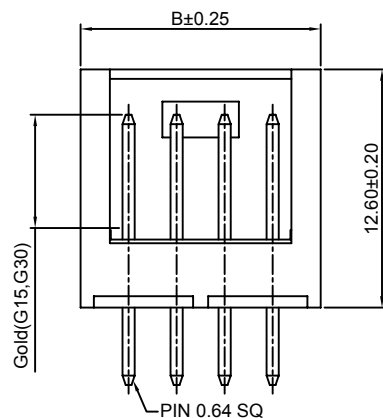
Ordering Information:  
A2549WV-2xXP - \*\*\* - \*\*\*  
1 2 3

- Part No.
- Material:  
(Blank): PBT, UL94V-0  
GWT: PBT, UL94V-0, GWT 750 °C
- Finish:  
(blank): Tin over Nickel  
G: Gold-flash  
G15: 15µin (0.38µm) MIN. Select Gold  
100µin (2.54µm) MIN. Select Tin  
G30: 30µin (0.76µm) MIN. Select Gold  
100µin (2.54µm) MIN. Select Tin

#### Ordering Information & Dimensions:

| PART NO. | Dimensions |       |
|----------|------------|-------|
|          | A          | B     |
| 2x2P     | 2.54       | 7.62  |
| 2x3P     | 5.08       | 10.16 |
| 2x4P     | 7.62       | 12.70 |
| 2x5P     | 10.16      | 15.24 |
| 2x6P     | 12.70      | 17.78 |
| 2x7P     | 15.24      | 20.32 |
| 2x8P     | 17.78      | 22.86 |
| 2x9P     | 20.32      | 25.40 |
| 2x10P    | 22.86      | 27.94 |
| 2x11P    | 25.40      | 30.48 |
| 2x12P    | 27.94      | 33.02 |
| 2x13P    | 30.48      | 35.56 |
| 2x14P    | 33.02      | 38.10 |
| 2x15P    | 35.56      | 40.64 |
| 2x16P    | 38.10      | 43.18 |
| 2x17P    | 40.64      | 45.72 |
| 2x18P    | 43.18      | 48.26 |
| 2x19P    | 45.72      | 50.80 |
| 2x20P    | 48.26      | 53.34 |
| 2x21P    | 50.80      | 55.88 |
| 2x22P    | 53.34      | 58.42 |

Unit: mm

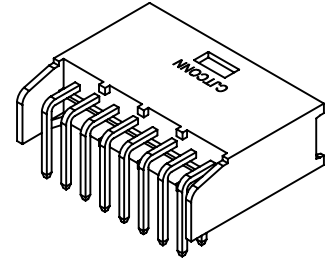
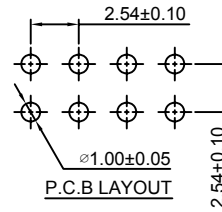
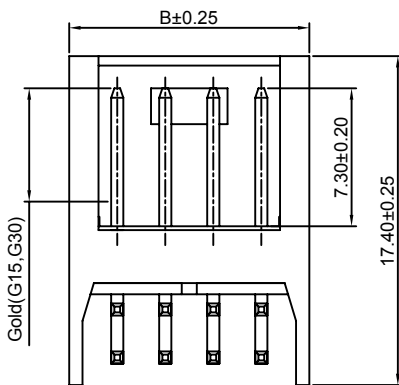
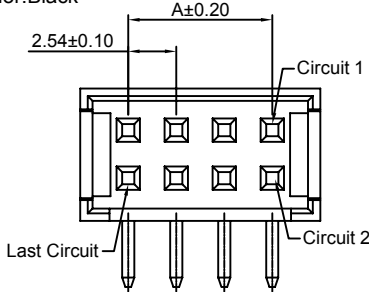


### A2549WR-2xXP

2.54mm pitch 90° Dual Row Wafer

**Reference Informations:**

- \*Material: Pin: Brass/Tin over Nickel  
Insulator: PBT, UL94V-0
- \*Mates with CJT A2549H-2xXP series Housing
- \*Color: Black



Ordering Information:  
A2549WR-2xXP - \*\*\* - \*\*\*

1. Part No.
2. Material:  
(Blank): PBT, UL94V-0  
GWT: PBT, UL94V-0, GWT 750°C
3. Finish:  
(blank): Tin over Nickel  
G: Gold-flash  
G15: 15µin (0.38µm) MIN. Select Gold  
100µin (2.54µm) MIN. Select Tin  
G30: 30µin (0.76µm) MIN. Select Gold  
100µin (2.54µm) MIN. Select Tin

Ordering Information & Dimensions:

| PART NO. | Dimensions |       |
|----------|------------|-------|
|          | A          | B     |
| 2x2P     | 2.54       | 7.62  |
| 2x3P     | 5.08       | 10.16 |
| 2x4P     | 7.62       | 12.70 |
| 2x5P     | 10.16      | 15.24 |
| 2x6P     | 12.70      | 17.78 |
| 2x7P     | 15.24      | 20.32 |
| 2x8P     | 17.78      | 22.86 |
| 2x9P     | 20.32      | 25.40 |
| 2x10P    | 22.86      | 27.94 |
| 2x11P    | 25.40      | 30.48 |
| 2x12P    | 27.94      | 33.02 |
| 2x13P    | 30.48      | 35.56 |
| 2x14P    | 33.02      | 38.10 |
| 2x15P    | 35.56      | 40.64 |
| 2x16P    | 38.10      | 43.18 |
| 2x17P    | 40.64      | 45.72 |
| 2x18P    | 43.18      | 48.26 |
| 2x19P    | 45.72      | 50.80 |
| 2x20P    | 48.26      | 53.34 |
| 2x21P    | 50.80      | 55.88 |
| 2x22P    | 53.34      | 58.42 |

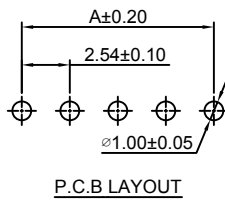
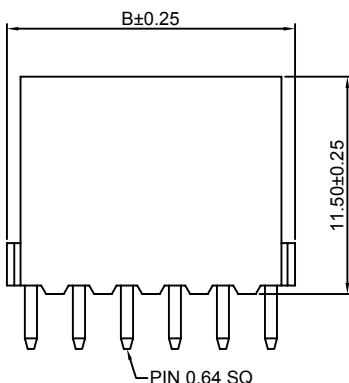
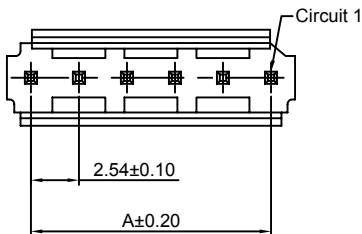
Unit: mm

### A2549WVB-XP

2.54mm pitch 180° Single Row Wafer

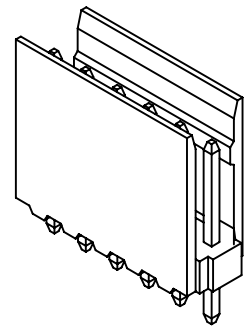
**Reference Informations:**

- \*Material: Pin: Brass/Tin over Nickel  
Insulator: Nylon 66, UL94V-0
- \*Mates with CJT A2549HB-XP, A2550HA-XP series Housing
- \*Color: Blue



Ordering Information:  
A2549WVB-XP - \*\*\* - \*\* - \*\*\*

1. Part No.
2. Material:  
(Blank): Nylon 66, UL94V-0  
GWT: Nylon 66, UL94V-0, GWT 750°C
3. Color:  
(Blank): Blue  
BK: Black
4. Finish:  
(blank): Tin over Nickel  
G: Gold-flash  
G15: 15µin (0.38µm) MIN. Select Gold  
100µin (2.54µm) MIN. Select Tin  
G30: 30µin (0.76µm) MIN. Select Gold  
100µin (2.54µm) MIN. Select Tin



Ordering Information & Dimensions:

| PART NO. | Dimensions |       |
|----------|------------|-------|
|          | A          | B     |
| 2P       | 2.54       | 5.08  |
| 3P       | 5.08       | 7.62  |
| 4P       | 7.62       | 10.16 |
| 5P       | 10.16      | 12.70 |
| 6P       | 12.70      | 15.24 |
| 7P       | 15.24      | 17.78 |
| 8P       | 17.78      | 20.32 |
| 10P      | 22.86      | 25.40 |
| 12P      | 27.94      | 30.48 |
| 15P      | 35.56      | 38.10 |
| 17P      | 40.64      | 43.18 |
| 18P      | 43.18      | 45.72 |

Unit: mm



## A2549WRB-XP

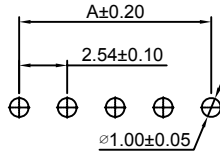
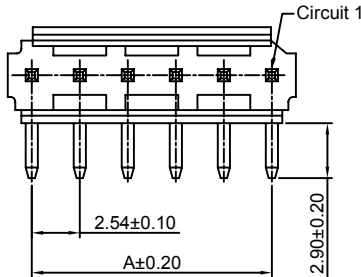
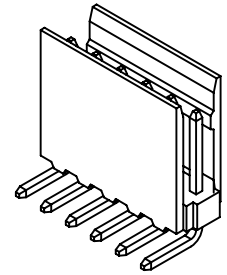
2.54mm pitch 90° Single Row Wafer

**Reference Informations:**

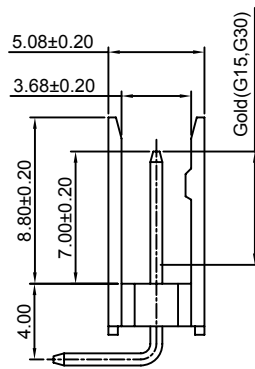
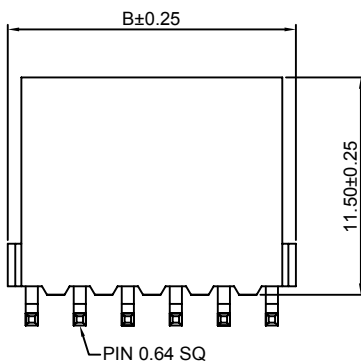
- \*Material:Pin:Brass/Tin over Nickel  
Insulator:Nylon 66,UL94V-0
- \*Mates with CJT A2549HB-XP,A2550HA-XP series Housing
- \*Color:Blue

Ordering Information:  
A2549WRB-XP - \*\*\* - \*\* - \*\*\*  
1 2 3 4

- 1.Part No.
- 2.Material:  
(Blank):Nylon 66,UL94V-0  
GWT:Nylon 66,UL94V-0,GWT 750 °C
- 3.Color:  
(Blank):Blue  
BK:Black
- 4.Finish:  
(blank):Tin over Nickel  
G:Gold-flash  
G15:15µin (0.38µm) MIN.Select Gold  
100µin (2.54µm) MIN.Select Tin  
G30:30µin (0.76µm) MIN.Select Gold  
100µin (2.54µm) MIN.Select Tin



P.C.B LAYOUT



Ordering Information & Dimensions:

| PART NO. | Dimensions |       |
|----------|------------|-------|
|          | A          | B     |
| 2P       | 2.54       | 5.08  |
| 3P       | 5.08       | 7.62  |
| 4P       | 7.62       | 10.16 |
| 5P       | 10.16      | 12.70 |
| 6P       | 12.70      | 15.24 |
| 7P       | 15.24      | 17.78 |
| 8P       | 17.78      | 20.32 |
| 10P      | 22.86      | 25.40 |
| 12P      | 27.94      | 30.48 |
| 15P      | 35.56      | 38.10 |
| 17P      | 40.64      | 43.18 |
| 18P      | 43.18      | 45.72 |

Unit: mm

## A2549WRB-S-XP

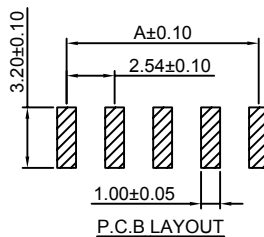
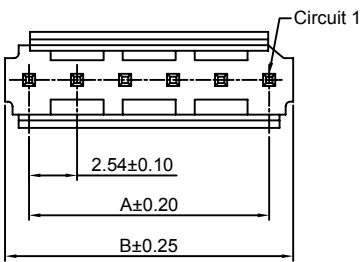
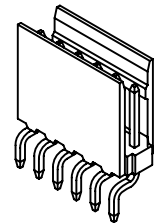
2.54mm pitch 90° Single Row Wafer-SMT TYPE

**Reference Informations:**

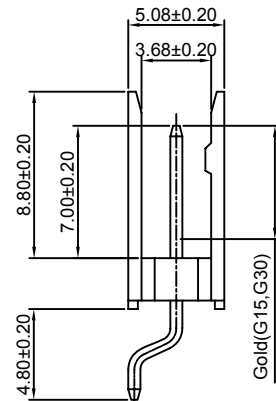
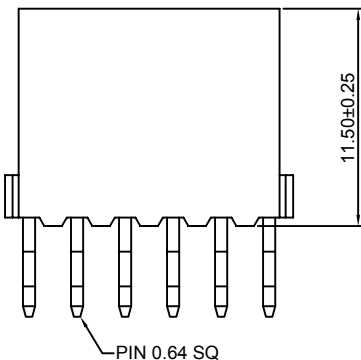
- \*Material:Pin:Brass/Tin over Nickel  
Insulator:Nylon 6T,UL94V-0
- \*Mates with CJT A2549HB-XP,A2550HA-XP series Housing
- \*Color:Blue

Ordering Information:  
A2549WRB-S-XP - \*\*\* - \*\* - \*\*\*  
1 2 3 4

- 1.Part No.
- 2.Material:  
(Blank):Nylon 6T,UL94V-0  
GWT:Nylon 6T,UL94V-0,GWT 750 °C
- 3.Color:  
(Blank):Blue  
BK:Black
- 4.Finish:  
(blank):Tin over Nickel  
G:Gold-flash  
G15:15µin (0.38µm) MIN.Select Gold  
100µin (2.54µm) MIN.Select Tin  
G30:30µin (0.76µm) MIN.Select Gold  
100µin (2.54µm) MIN.Select Tin



P.C.B LAYOUT



Ordering Information & Dimensions:

| PART NO. | Dimensions |       |
|----------|------------|-------|
|          | A          | B     |
| 2P       | 2.54       | 5.08  |
| 3P       | 5.08       | 7.62  |
| 4P       | 7.62       | 10.16 |
| 5P       | 10.16      | 12.70 |
| 6P       | 12.70      | 15.24 |
| 7P       | 15.24      | 17.78 |
| 8P       | 17.78      | 20.32 |
| 10P      | 22.86      | 25.40 |
| 12P      | 27.94      | 30.48 |
| 15P      | 35.56      | 38.10 |
| 17P      | 40.64      | 43.18 |
| 18P      | 43.18      | 45.72 |

Unit: mm

### A2549WVB-2xXP

2.54mm pitch 180° Dual Row Wafer

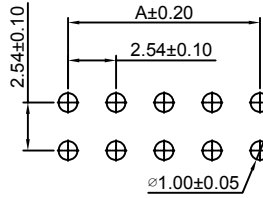
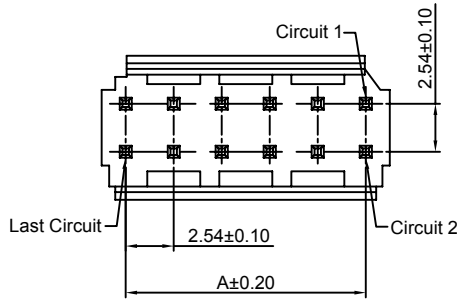
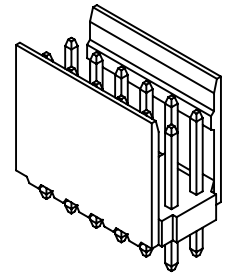
#### Reference Informations:

- \*Material:Pin:Brass/Tin over Nickel  
Insulator:Nylon 66,UL94V-0
- \*Mates with CJT A2549HB-2xXP,A2550HA-2xXP series Housing
- \*Color:Blue

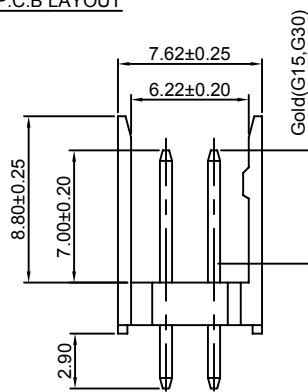
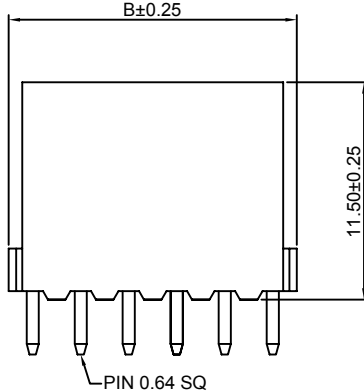
#### Ordering Information:

A2549WVB-2xXP -\*\*\* - \*\* - \*\*\*  
1 2 3 4

- 1.Part No.
- 2.Material:  
(Blank):Nylon 66,UL94V-0  
GWT:Nylon 66,UL94V-0,GWT 750 °C
- 3.Color:  
(Blank):Blue  
BK:Black
- 4.Finish:  
(blank):Tin over Nickel  
G:Gold-flash  
G15:15µin (0.38µm) MIN.Select Gold  
100µin (2.54µm) MIN.Select Tin  
G30:30µin (0.76µm) MIN.Select Gold  
100µin (2.54µm) MIN.Select Tin



P.C.B LAYOUT



#### Ordering Information & Dimensions:

| PART NO. | Dimensions |       |
|----------|------------|-------|
|          | A          | B     |
| 2x2P     | 2.54       | 5.08  |
| 2x3P     | 5.08       | 7.62  |
| 2x4P     | 7.62       | 10.16 |
| 2x5P     | 10.16      | 12.70 |
| 2x6P     | 12.70      | 15.24 |
| 2x7P     | 15.24      | 17.78 |
| 2x8P     | 17.78      | 20.32 |
| 2x10P    | 22.86      | 25.40 |
| 2x12P    | 27.94      | 30.48 |
| 2x15P    | 35.56      | 38.10 |
| 2x17P    | 40.64      | 43.18 |
| 2x18P    | 43.18      | 45.72 |

Unit: mm

### A2549WRB-2xXP

2.54mm pitch 90° Dual Row Wafer

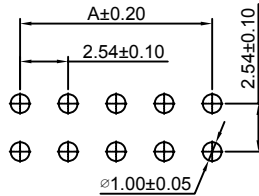
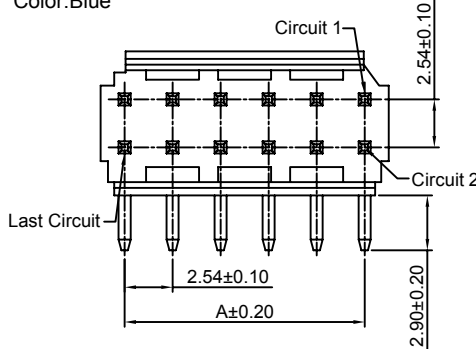
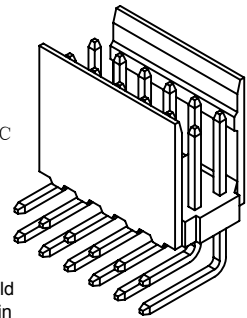
#### Reference Informations:

- \*Material:Pin:Brass/Tin over Nickel  
Insulator:Nylon 66,UL94V-0
- \*Mates with CJT A2549HB-2xXP,A2550HA-2xXP series Housing
- \*Color:Blue

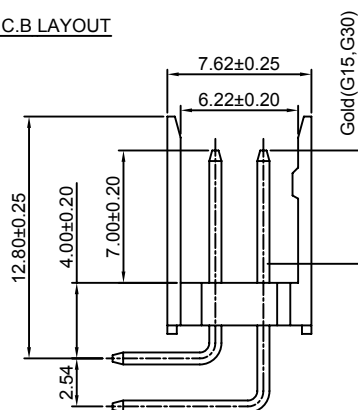
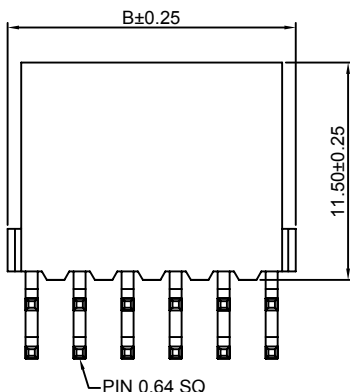
#### Ordering Information:

A2549WRB-2xXP -\*\*\* - \*\* - \*\*\*  
1 2 3 4

- 1.Part No.
- 2.Material:  
(Blank):Nylon 66,UL94V-0  
GWT:Nylon 66,UL94V-0,GWT 750 °C
- 3.Color:  
(Blank):Blue  
BK:Black
- 4.Finish:  
(blank):Tin over Nickel  
G:Gold-flash  
G15:15µin (0.38µm) MIN.Select Gold  
100µin (2.54µm) MIN.Select Tin  
G30:30µin (0.76µm) MIN.Select Gold  
100µin (2.54µm) MIN.Select Tin



P.C.B LAYOUT



#### Ordering Information & Dimensions:

| PART NO. | Dimensions |       |
|----------|------------|-------|
|          | A          | B     |
| 2x2P     | 2.54       | 5.08  |
| 2x3P     | 5.08       | 7.62  |
| 2x4P     | 7.62       | 10.16 |
| 2x5P     | 10.16      | 12.70 |
| 2x6P     | 12.70      | 15.24 |
| 2x7P     | 15.24      | 17.78 |
| 2x8P     | 17.78      | 20.32 |
| 2x10P    | 22.86      | 25.40 |
| 2x12P    | 27.94      | 30.48 |
| 2x15P    | 35.56      | 38.10 |
| 2x17P    | 40.64      | 43.18 |
| 2x18P    | 43.18      | 45.72 |

Unit: mm

### A2549WVI-2xXP

2.54mm pitch 180° Dual Row Wafer

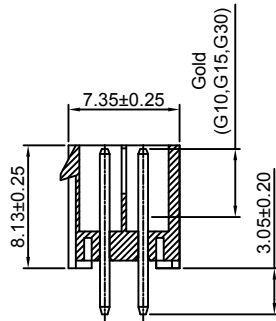
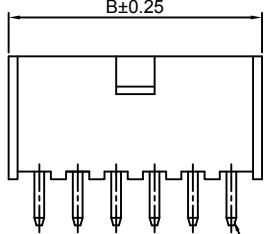
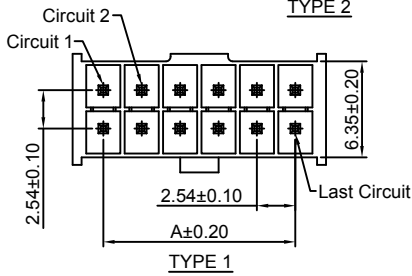
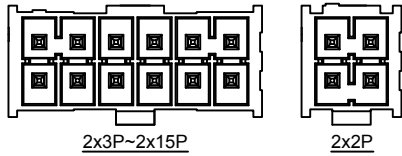
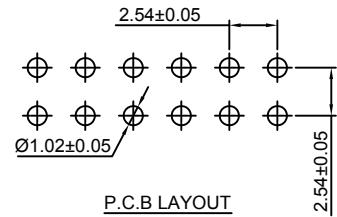
#### Reference Informations:

- \*Material: Pin: Brass/Tin over Nickel  
Insulator: LCP, UL94V-0
- \*Mates with CJT A2549HI-2xXP series Housing
- \*Color: Ivory

#### Ordering Information:

A2549WVI-2xXP - \* - \*\*\* - \*\* - \*\*\*  
1 2 3 4 5

1. Part No.
2. Style:  
(Blank): TYPE 1  
K: TYPE 2
3. Material:  
(Blank): LCP, UL94V-0  
GWT: LCP, UL94V-0, GWT 750 °C
4. Color:  
(Blank): Ivory  
BK: Black
5. Finish:  
(blank): Tin over Nickel  
G: Gold-flash  
G10: 10µin (0.25µm) MIN. Select Gold  
100µin (2.54µm) MIN. Select Tin  
G15: 15µin (0.38µm) MIN. Select Gold  
100µin (2.54µm) MIN. Select Tin  
G30: 30µin (0.76µm) MIN. Select Gold  
100µin (2.54µm) MIN. Select Tin



#### Ordering Information & Dimensions:

| PART NO. | Dimensions |       |
|----------|------------|-------|
|          | A          | B     |
| 2x2P     | 2.54       | 6.60  |
| 2x3P     | 5.08       | 9.14  |
| 2x4P     | 7.62       | 11.68 |
| 2x5P     | 10.16      | 14.22 |
| 2x6P     | 12.70      | 16.76 |
| 2x7P     | 15.24      | 19.30 |
| 2x8P     | 17.78      | 21.84 |
| 2x9P     | 20.32      | 24.38 |
| 2x10P    | 22.86      | 26.92 |
| 2x11P    | 25.40      | 29.46 |
| 2x12P    | 27.94      | 32.00 |
| 2x13P    | 30.48      | 34.54 |
| 2x14P    | 33.02      | 37.08 |
| 2x15P    | 35.56      | 39.62 |

Unit: mm

### A2549WRI-2xXP

2.54mm pitch 90° Dual Row Wafer

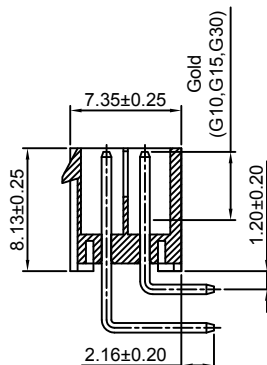
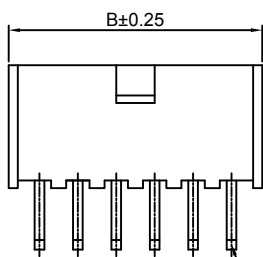
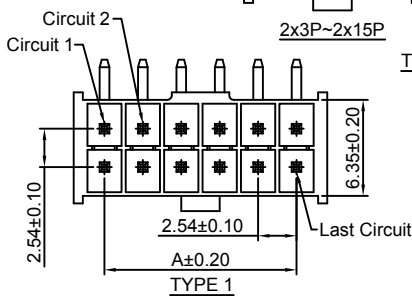
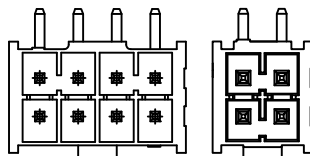
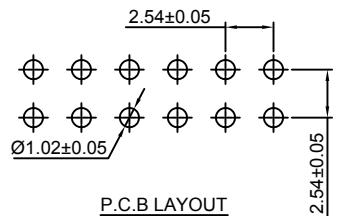
#### Reference Informations:

- \*Material: Pin: Brass/Tin over Nickel  
Insulator: LCP, UL94V-0
- \*Mates with CJT A2549HI-2xXP series Housing
- \*Color: Ivory

#### Ordering Information:

A2549WRI-2xXP - \* - \*\*\* - \*\* - \*\*\*  
1 2 3 4 5

1. Part No.
2. Style:  
(Blank): TYPE 1  
K: TYPE 2
3. Material:  
(Blank): LCP, UL94V-0  
GWT: LCP, UL94V-0, GWT 750 °C
4. Color:  
(Blank): Ivory  
BK: Black
5. Finish:  
(blank): Tin over Nickel  
G: Gold-flash  
G10: 10µin (0.25µm) MIN. Select Gold  
100µin (2.54µm) MIN. Select Tin  
G15: 15µin (0.38µm) MIN. Select Gold  
100µin (2.54µm) MIN. Select Tin  
G30: 30µin (0.76µm) MIN. Select Gold  
100µin (2.54µm) MIN. Select Tin



#### Ordering Information & Dimensions:

| PART NO. | Dimensions |       |
|----------|------------|-------|
|          | A          | B     |
| 2x2P     | 2.54       | 6.60  |
| 2x3P     | 5.08       | 9.14  |
| 2x4P     | 7.62       | 11.68 |
| 2x5P     | 10.16      | 14.22 |
| 2x6P     | 12.70      | 16.76 |
| 2x7P     | 15.24      | 19.30 |
| 2x8P     | 17.78      | 21.84 |
| 2x9P     | 20.32      | 24.38 |
| 2x10P    | 22.86      | 26.92 |
| 2x11P    | 25.40      | 29.46 |
| 2x12P    | 27.94      | 32.00 |
| 2x13P    | 30.48      | 34.54 |
| 2x14P    | 33.02      | 37.08 |
| 2x15P    | 35.56      | 39.62 |

Unit: mm

### A2549WVI-S-2xXP

2.54mm pitch 180° Dual Row Wafer - SMT TYPE

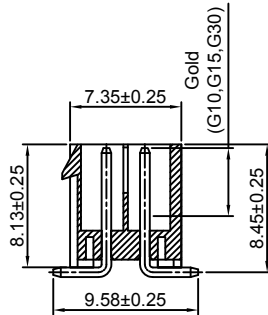
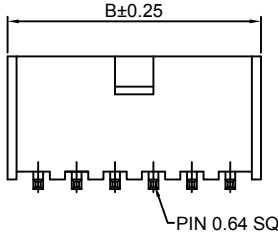
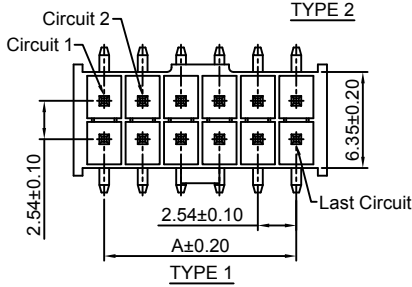
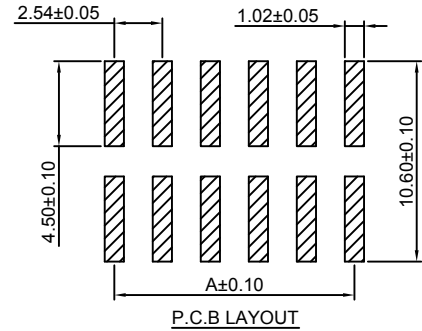
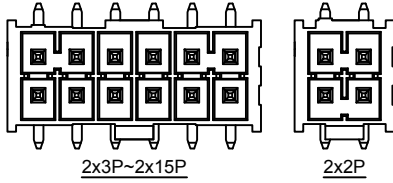
#### Reference Informations:

- \*Material: Pin: Brass/Tin over Nickel  
Insulator: LCP, UL94V-0
- \*Mates with CJT A2549HI-2xXP series Housing
- \*Color: Ivory

#### Ordering Information:

A2549WVI-S-2xXP - \* - \*\*\* - \*\* - \*\*\*  
1 2 3 4 5

1. Part No.
2. Style:  
(Blank): TYPE 1  
K: TYPE 2
3. Material:  
(Blank): LCP, UL94V-0  
GWT: LCP, UL94V-0, GWT 750 °C
4. Color:  
(Blank): Ivory  
BK: Black
5. Finish:  
(blank): Tin over Nickel  
G: Gold-flash  
G10: 10µm (0.25µm) MIN. Select Gold  
100µm (2.54µm) MIN. Select Tin  
G15: 15µm (0.38µm) MIN. Select Gold  
100µm (2.54µm) MIN. Select Tin  
G30: 30µm (0.76µm) MIN. Select Gold  
100µm (2.54µm) MIN. Select Tin



#### Ordering Information & Dimensions:

| PART NO. | Dimensions |       |
|----------|------------|-------|
|          | A          | B     |
| 2x2P     | 2.54       | 6.60  |
| 2x3P     | 5.08       | 9.14  |
| 2x4P     | 7.62       | 11.68 |
| 2x5P     | 10.16      | 14.22 |
| 2x6P     | 12.70      | 16.76 |
| 2x7P     | 15.24      | 19.30 |
| 2x8P     | 17.78      | 21.84 |
| 2x9P     | 20.32      | 24.38 |
| 2x10P    | 22.86      | 26.92 |
| 2x11P    | 25.40      | 29.46 |
| 2x12P    | 27.94      | 32.00 |
| 2x13P    | 30.48      | 34.54 |
| 2x14P    | 33.02      | 37.08 |
| 2x15P    | 35.56      | 39.62 |

Unit: mm

## X-ON Electronics

Largest Supplier of Electrical and Electronic Components

*Click to view similar products for [Headers & Wire Housings](#) category:*

*Click to view products by [Changjiang](#) manufacturer:*

Other Similar products are found below :

[95000-104TRLF](#) [10135584-644402LF](#) [DF62W-EP2022PCA](#) [95000-106TRLF](#) [DF62W-2022SCA](#) [DF62W-EP2022PC](#) [2203348](#) [DF62W-2022SC](#) [1084018](#) [1029039](#) [1084017](#) [802-10-012-10-002000](#) [1112640](#) [1112639](#) [891-007-9SS-BST1T](#) [000-34000](#) [0008550134](#) [0009482033](#) [0009507031](#) [57102-F02-18ULF](#) [57102-S06-03LF](#) [57202-S52-04LF](#) [PCN6-15S-2.5E](#) [0039019024](#) [58102-G61-06LF](#) [582553-1](#) [0009485154](#) [0009508121](#) [0022285053](#) [0050291907](#) [018731A](#) [LY20-4P-DT1-P1E-BR](#) [02.125.8002.8](#) [60101931](#) [60598-1 \(Cut Strip\)](#) [M1625-3R/100](#) [61062-3](#) [61082-181009](#) [CSU011177004](#) [636-1427](#) [638009-1](#) [641938-9](#) [641991-4](#) [644168-1](#) [644827-2](#) [647662-1](#) [65039-019ELF](#) [65692-001LF](#) [65781-018](#) [65781-047](#)