



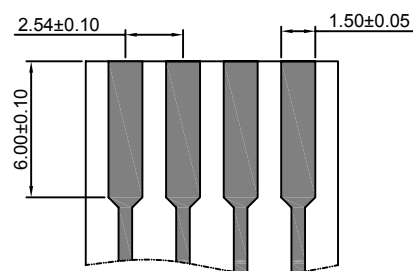
Specifications

- Current rating: 3A AC, DC
- Voltage rating: 300V AC, DC
- Temperature range: -40°C ~ +105°C
- Contact resistance: 5mΩ Max.
- Insulation resistance: 1000MΩ Min.
- Withstanding voltage: 1100V AC/minute
- *Compliant with RoHS and REACH*
- *Meet the HF/Halogen Free, need to customize*
- *Contact CJT for details*

Standards



Contact Layout



A2550-T

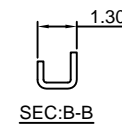
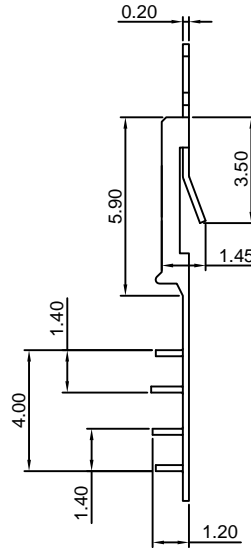
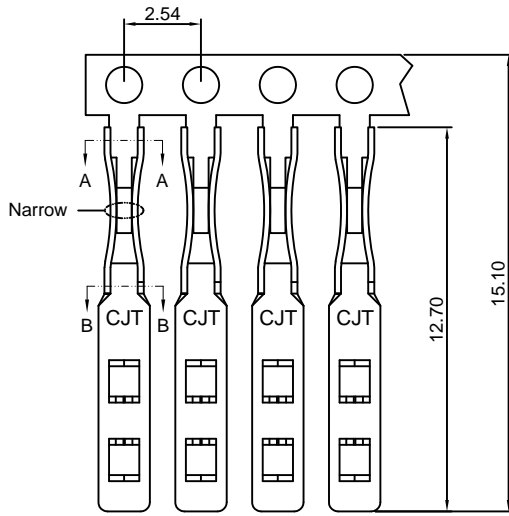
2.54mm Pitch High Insertion Force Crimp Terminal

Reference Informations:

*Used in CJT A2550 series Housing

Use With CJT A2550 series Housing:

| | |
|------------|--|
| Single Row | A2550H-XP,A2550HA-XP,A2550HB-XP,A2550H-XP-A |
| | A2550H-XP-B,A2550H-XP-C,A2550H-XP-C1,A2550H-XP-D |
| | A2550H-XP-E,A2550H-XP-F,A2550H-XP-J |
| Dual Row | A2550H-2xXP,A2550HA-2xXP |



Ordering information & Specifications:

Unit:mm

| Part NO. | Wire Range | Insulation O.D. | Material | Finish | Qty/reel |
|----------|------------|-----------------|-----------------|------------------|------------|
| A2550-TP | FFC WIRE | ----- | Phosphor Bronze | Tin over Nickel | 20,000 PCS |
| A2550-GP | FFC WIRE | ----- | Phosphor Bronze | Gold over Nickel | 20,000 PCS |

Optional Gold plating available but MOQ requested

A2550-T-H

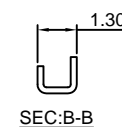
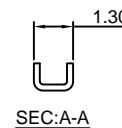
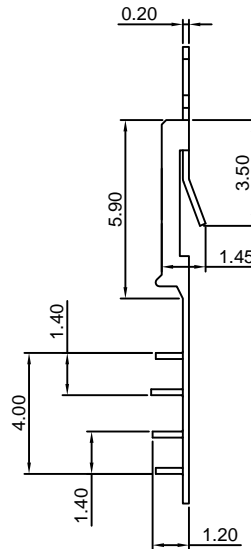
2.54mm Pitch Low insertion Force Crimp Terminal

Reference Informations:

*Used in CJT A2550 series Housing

Use With CJT A2550 series Housing:

| | |
|------------|--|
| Single Row | A2550H-XP,A2550HA-XP,A2550HB-XP,A2550H-XP-A |
| | A2550H-XP-B,A2550H-XP-C,A2550H-XP-C1,A2550H-XP-D |
| | A2550H-XP-E,A2550H-XP-F,A2550H-XP-J |
| Dual Row | A2550H-2xXP,A2550HA-2xXP |



Ordering information & Specifications:

Unit:mm

| Part NO. | Wire Range | Insulation O.D. | Material | Finish | Qty/reel |
|------------|------------|-----------------|-----------------|------------------|------------|
| A2550-TP-H | FFC WIRE | ----- | Phosphor Bronze | Tin over Nickel | 20,000 PCS |
| A2550-GP-H | FFC WIRE | ----- | Phosphor Bronze | Gold over Nickel | 20,000 PCS |

Optional Gold plating available but MOQ requested

A2550-T-CR

2.54mm Pitch High Insertion Force Crimp Terminal

Reference Informations:

*Used in CJT A2550 series Housing

Use With CJT A2550 series Housing:

| | |
|------------|--|
| Single Row | A2550H-XP,A2550HA-XP,A2550HB-XP,A2550H-XP-A |
| | A2550H-XP-B,A2550H-XP-C,A2550H-XP-C1,A2550H-XP-D |
| | A2550H-XP-E,A2550H-XP-F,A2550H-XP-J |
| Dual Row | A2550H-2xXP,A2550HA-2xXP |



Ordering information & Specifications:

Unit:mm

| Part NO. | Wire Range | Insulation O.D. | Material | Finish | Qty/reel |
|-------------|------------|-----------------|-----------------|------------------|------------|
| A2550-TP-CR | FFC WIRE | ----- | Phosphor Bronze | Tin over Nickel | 20,000 PCS |
| A2550-GP-CR | FFC WIRE | ----- | Phosphor Bronze | Gold over Nickel | 20,000 PCS |

Optional Gold plating available but MOQ requested

A2550-T-H-CR

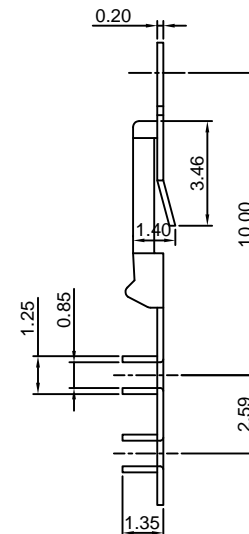
2.54mm Pitch Low insertion Force Crimp Terminal

Reference Informations:

*Used in CJT A2550 series Housing

Use With CJT A2550 series Housing:

| | |
|------------|--|
| Single Row | A2550H-XP,A2550HA-XP,A2550HB-XP,A2550H-XP-A |
| | A2550H-XP-B,A2550H-XP-C,A2550H-XP-C1,A2550H-XP-D |
| | A2550H-XP-E,A2550H-XP-F,A2550H-XP-J |
| Dual Row | A2550H-2xXP,A2550HA-2xXP |



Ordering information & Specifications:

Unit:mm

| Part NO. | Wire Range | Insulation O.D. | Material | Finish | Qty/reel |
|---------------|------------|-----------------|-----------------|------------------|------------|
| A2550-TP-H-CR | FFC WIRE | ----- | Phosphor Bronze | Tin over Nickel | 20,000 PCS |
| A2550-GP-H-CR | FFC WIRE | ----- | Phosphor Bronze | Gold over Nickel | 20,000 PCS |

Optional Gold plating available but MOQ requested

A2550-T-A

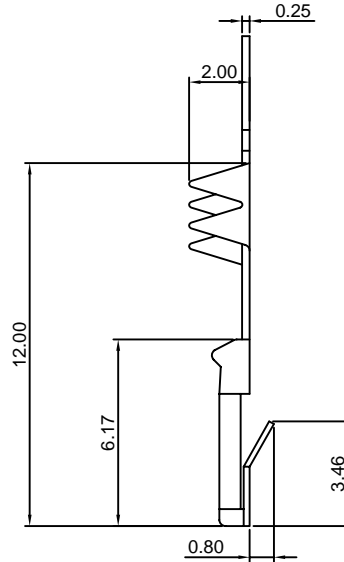
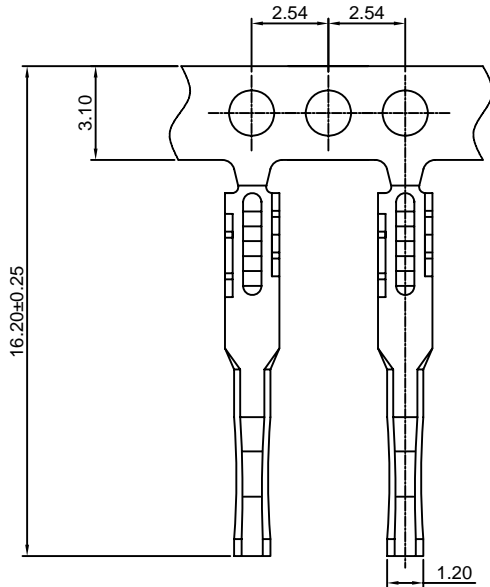
2.54mm pitch Crimp Flex Terminal

Reference Informations:

*Used in CJT A2550 series Housing

Use With CJT A2550 series Housing:

| | |
|------------|---|
| Single Row | A2550H-XP, A2550HA-XP, A2550HB-XP, A2550H-XP-A |
| | A2550H-XP-B, A2550H-XP-C, A2550H-XP-C1, A2550H-XP-D |
| | A2550H-XP-E, A2550H-XP-F, A2550H-XP-J |
| Dual Row | A2550H-2xXP, A2550HA-2xXP |



Ordering information & Specifications:

Unit:mm

| Part NO. | Wire Range | Insulation O.D. | Material | Finish | Qty/reel |
|------------|------------|-----------------|-----------------|------------------|------------|
| A2550-TP-A | FFC WIRE | ----- | Phosphor Bronze | Tin over Nickel | 10,000 PCS |
| A2550-GP-A | FFC WIRE | ----- | Phosphor Bronze | Gold over Nickel | 10,000 PCS |

Optional Gold plating available but MOQ requested

A2550-T-C

2.54mm Pitch Hi-Flex Crimp Terminal

Reference Informations:

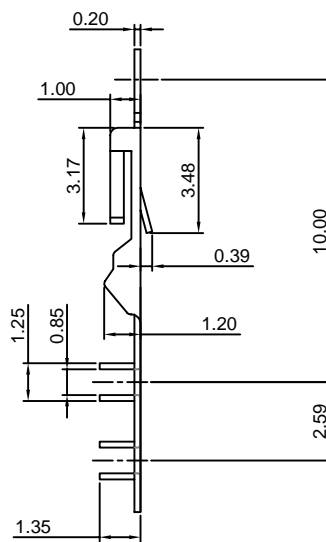
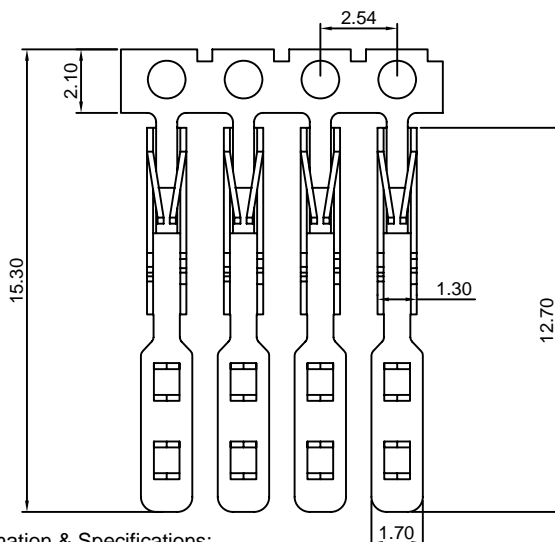
*Used in CJT A2550 series Housing

*The Hi-Flex female contact designed to offer a stable insertion force and low contact resistance over larger number of mating cycles

*More resistant to damage by bent or angled pins, primarily on test devices

Use With CJT A2550 series Housing:

| | |
|------------|---|
| Single Row | A2550H-XP, A2550HA-XP, A2550HB-XP, A2550H-XP-A |
| | A2550H-XP-B, A2550H-XP-C, A2550H-XP-C1, A2550H-XP-D |
| | A2550H-XP-E, A2550H-XP-F, A2550H-XP-J |
| Dual Row | A2550H-2xXP, A2550HA-2xXP |



Ordering information & Specifications:

Unit:mm

| Part NO. | Wire Range | Insulation O.D. | Material | Finish | Qty/reel |
|------------|------------|-----------------|-----------------|------------------|------------|
| A2550-TP-C | FFC WIRE | ----- | Phosphor Bronze | Tin over Nickel | 20,000 PCS |
| A2550-GP-C | FFC WIRE | ----- | Phosphor Bronze | Gold over Nickel | 20,000 PCS |

Optional Gold plating available but MOQ requested

A2550-T-D

2.54mm pitch Crimp Flex Terminal

Reference Informations:

*Designed for Soldering directly to Flexible PCB or Ultra Thin Rigged PCBs



Ordering information & Specifications:

Unit:mm

| Part NO. | Wire Range | Insulation O.D. | Material | Finish | Qty/reel |
|------------|------------|-----------------|-----------------|------------------|------------|
| A2550-TP-D | PCBs | ----- | Phosphor Bronze | Tin over Nickel | 20,000 PCS |
| A2550-GP-D | PCBs | ----- | Phosphor Bronze | Gold over Nickel | 20,000 PCS |

Optional Gold plating available but MOQ requested

A2550-T-E

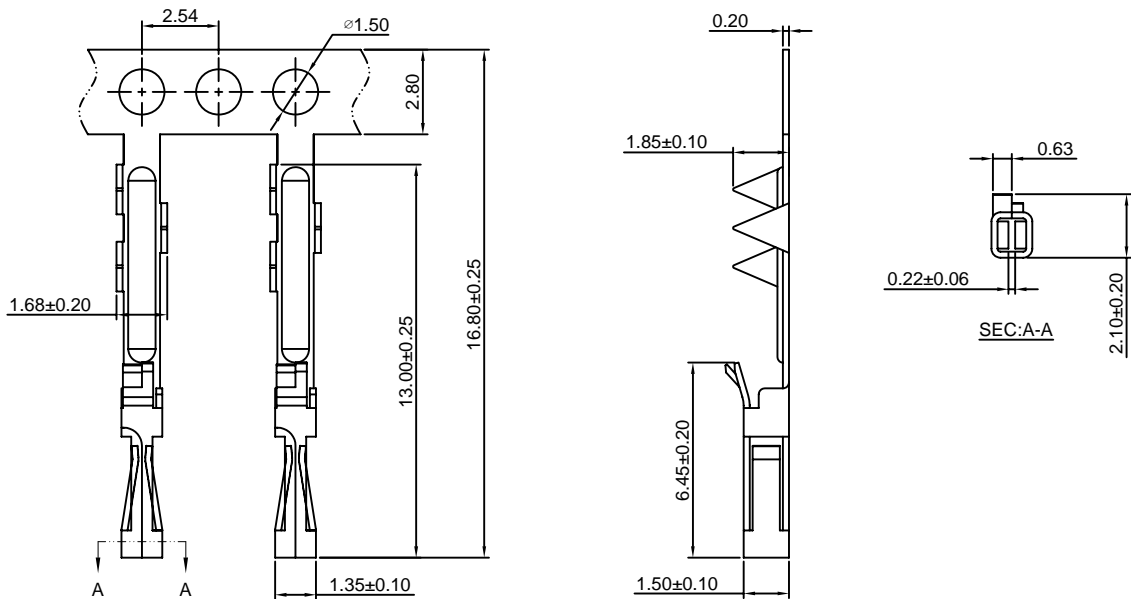
2.54mm pitch Crimp Flex Terminal

Reference Informations:

*Used in CJT A2550 series Housing

Use With CJT A2550 series Housing :

| | |
|------------|--|
| Single Row | A2550H-XP-M A2550H-XP-M1 A2550H-XP-M2 A2550H-XP-MH |
| | A2550H-XP-M3 |



Ordering information & Specifications:

Unit:mm

| Part NO. | Wire Range | Insulation O.D. | Material | Finish | Qty/reel |
|------------|------------|-----------------|-----------------|------------------|------------|
| A2550-TP-E | FFC WIRE | ----- | Phosphor Bronze | Tin over Nickel | 15,000 PCS |
| A2550-GP-E | FFC WIRE | ----- | Phosphor Bronze | Gold over Nickel | 15,000 PCS |

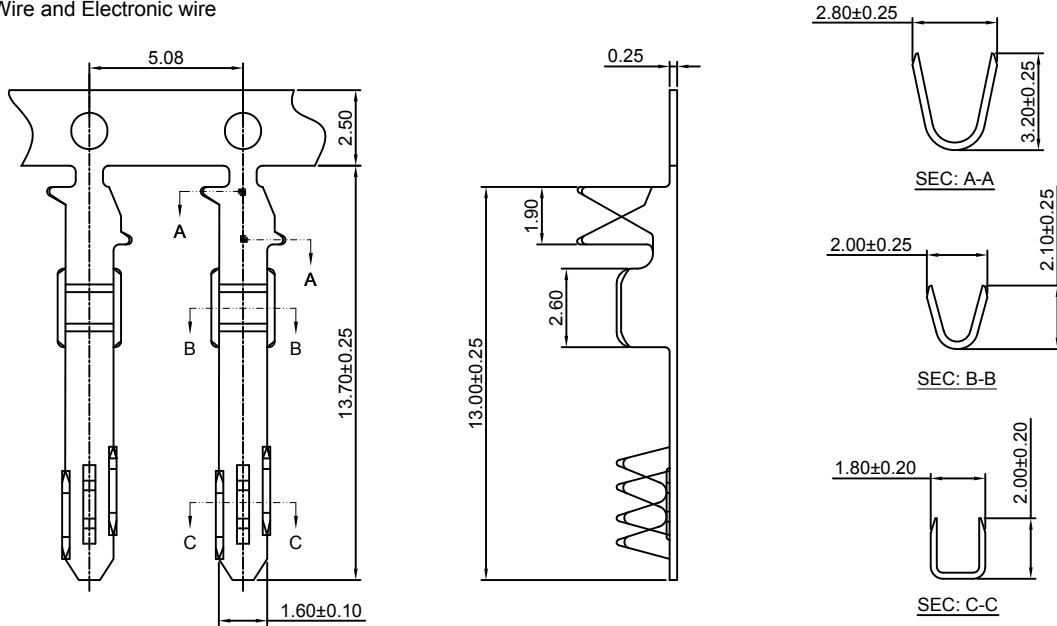
Optional Gold plating available but MOQ requested

A2550-T-F

2.54mm pitch Crimp Flex Terminal

Reference Informations:

*Used in FFC Wire and Electronic wire



Ordering information & Specifications:

Unit:mm

| Part NO. | Wire Range | Insulation O.D. | Material | Finish | Qty/reel |
|------------|---------------------|-----------------|-----------------|------------------|------------|
| A2550-TP-F | FFC WIRE/AWG#20-#26 | 1.80mm(max) | Phosphor Bronze | Tin over Nickel | 15,000 PCS |
| A2550-GP-F | FFC WIRE/AWG#20-#26 | 1.80mm(max) | Phosphor Bronze | Gold over Nickel | 15,000 PCS |

Optional Gold plating available but MOQ requested

A2550-T-J

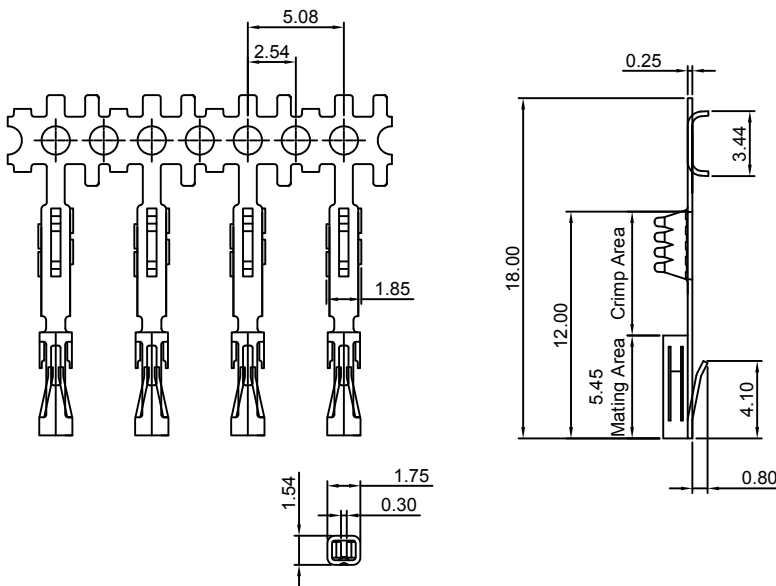
2.54mm pitch Crimp Flex Terminal

Reference Informations:

*Used in CJT A2550 series Housing

Use With CJT A2550 series Housing:

| | |
|------------|---------------------------------------|
| Single Row | A2550H-XP-G, A2550H-XP-H, A2550H-XP-I |
|------------|---------------------------------------|



Ordering Information:

A2550-GP-J - ***
1 2

1. Part No.

2. Finish

TG :Mating Area : 100µin (2.54µm) MIN. Tin

Crimp Area : 1µin (0.025µm) MIN. Gold

GT15 :Mating Area : 15µin (0.38µm) MIN. Gold

Crimp Area : 100µin (2.54µm) MIN. Tin

GT30 :Mating Area : 30µin (0.76µm) MIN. Gold

Crimp Area : 100µin (2.54µm) MIN. Tin

GT50 :Mating Area : 50µin (1.27µm) MIN. Gold

Crimp Area : 100µin (2.54µm) MIN. Tin

GG15 :Mating Area : 15µin (0.38µm) MIN. Gold

Crimp Area : 1µin (0.025µm) MIN. Gold

GG30 :Mating Area : 30µin (0.76µm) MIN. Gold

Crimp Area : 1µin (0.025µm) MIN. Gold

GG50 :Mating Area : 50µin (1.27µm) MIN. Gold

Crimp Area : 1µin (0.025µm) MIN. Gold

Ordering information & Specifications:

Unit:mm

| Part NO. | Wire Range | Insulation O.D. | Material | Finish | Qty/reel |
|------------|------------|-----------------|-----------------|------------------|------------|
| A2550-TP-J | FFC WIRE | ----- | Phosphor Bronze | Tin over Nickel | 10,000 PCS |
| A2550-GP-J | FFC WIRE | ----- | Phosphor Bronze | Gold over Nickel | 10,000 PCS |

Optional Gold plating available but MOQ requested

A2550-T-K

2.54mm pitch Crimp Flex Terminal

Reference Informations:

*Used in CJT A2550HK series Housing

Use With CJT A2550 series Housing:

| | |
|------------|--------------|
| Single Row | A2550HK-XP |
| Dual Row | A2550HK-2xXP |



Ordering information & Specifications:

Unit:mm

| Part NO. | Wire Range | Insulation O.D. | Material | Finish | Qty/reel |
|------------|------------|-----------------|-----------------|------------------|------------|
| A2550-TP-K | FFC WIRE | ----- | Phosphor Bronze | Tin over Nickel | 20,000 PCS |
| A2550-GP-K | FFC WIRE | ----- | Phosphor Bronze | Gold over Nickel | 20,000 PCS |

Optional Gold plating available but MOQ requested

A2550M-T

2.54mm pitch Crimp Flex Terminal

Reference Informations:

*Used in CJT A2550 series Housing

Use With CJT A2550 series Housing:

| | |
|------------|------------------------|
| Single Row | A2550H-XP, A2550H-XP-D |
| Dual Row | A2550H-2xXP |



Ordering information & Specifications:

Unit:mm

| Part NO. | Wire Range | Insulation O.D. | Material | Finish | Qty/reel |
|-----------|------------|-----------------|-----------------|------------------|------------|
| A2550M-TP | FFC WIRE | ----- | Phosphor Bronze | Tin over Nickel | 10,000 PCS |
| A2550M-GP | FFC WIRE | ----- | Phosphor Bronze | Gold over Nickel | 10,000 PCS |

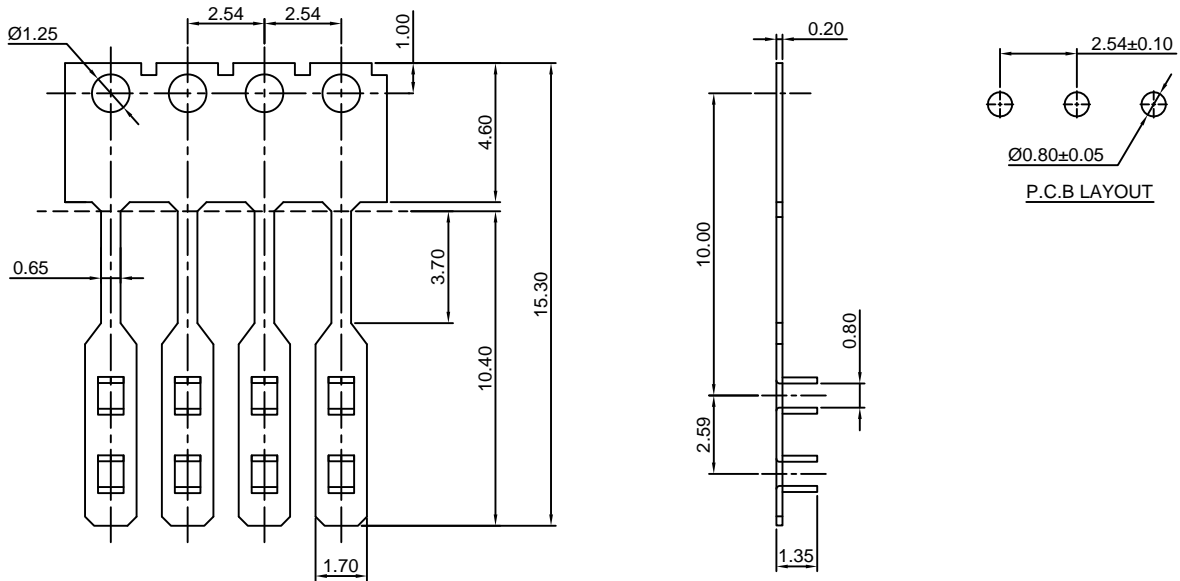
Optional Gold plating available but MOQ requested

A2550M-T-C

2.54mm pitch Crimp Flex Terminal

Reference Informations:

*Used in FFC Wire



Ordering information & Specifications:

Unit:mm

| Part NO. | Wire Range | Insulation O.D. | Material | Finish | Qty/reel |
|-------------|------------|-----------------|-----------------|------------------|------------|
| A2550M-TP-C | FFC WIRE | ----- | Phosphor Bronze | Tin over Nickel | 20,000 PCS |
| A2550M-GP-C | FFC WIRE | ----- | Phosphor Bronze | Gold over Nickel | 20,000 PCS |

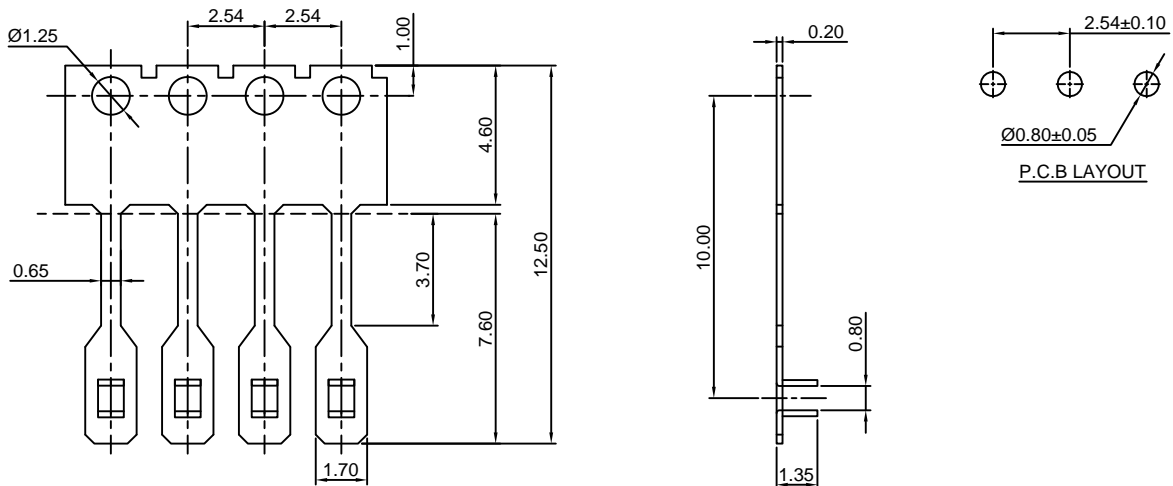
Optional Gold plating available but MOQ requested

A2550M-T-CA

2.54mm pitch Crimp Flex Terminal

Reference Informations:

*Used in FFC Wire



Ordering information & Specifications:

Unit:mm

| Part NO. | Wire Range | Insulation O.D. | Material | Finish | Qty/reel |
|--------------|------------|-----------------|-----------------|------------------|------------|
| A2550M-TP-CA | FFC WIRE | ----- | Phosphor Bronze | Tin over Nickel | 20,000 PCS |
| A2550M-GP-CA | FFC WIRE | ----- | Phosphor Bronze | Gold over Nickel | 20,000 PCS |

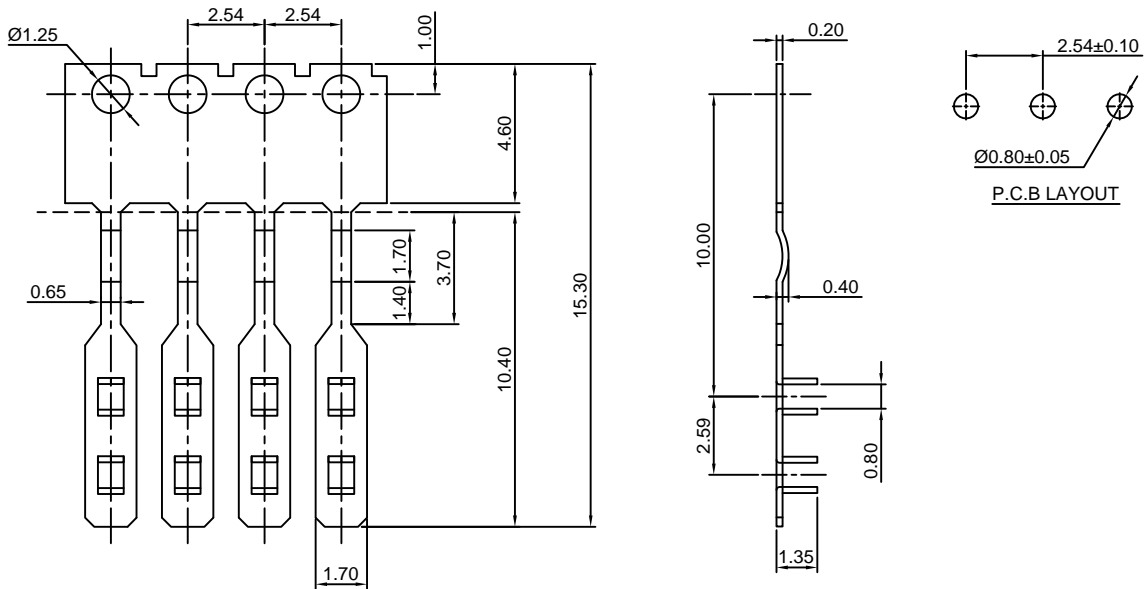
Optional Gold plating available but MOQ requested

A2550M-T-C1

2.54mm pitch Crimp Flex Terminal

Reference Informations:

*Used in FFC Wire



Ordering information & Specifications:

Unit:mm

| Part NO. | Wire Range | Insulation O.D. | Material | Finish | Qty/reel |
|--------------|------------|-----------------|-----------------|------------------|------------|
| A2550M-TP-C1 | FFC WIRE | ----- | Phosphor Bronze | Tin over Nickel | 20,000 PCS |
| A2550M-GP-C1 | FFC WIRE | ----- | Phosphor Bronze | Gold over Nickel | 20,000 PCS |

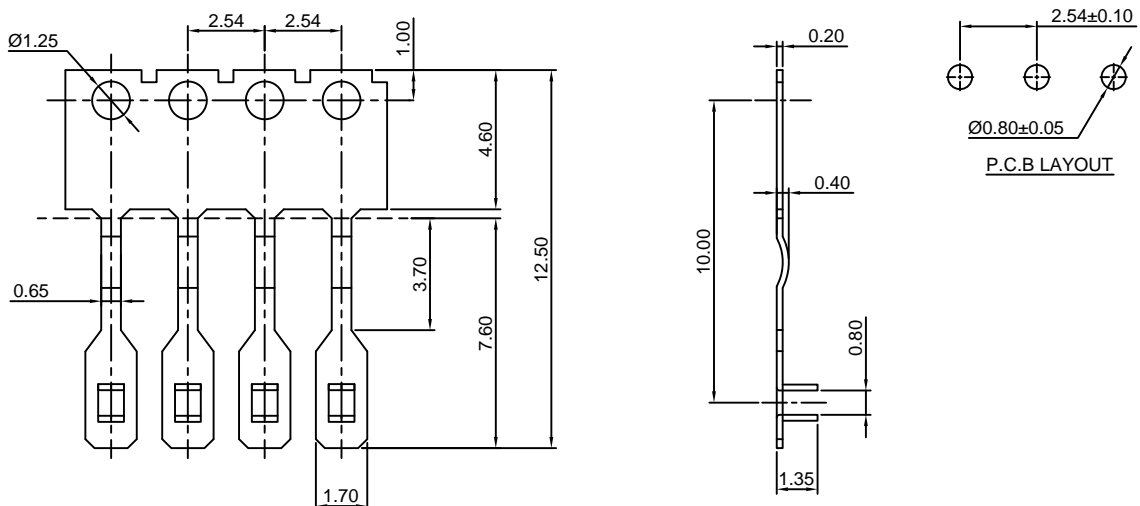
Optional Gold plating available but MOQ requested

A2550M-T-C1A

2.54mm pitch Crimp Flex Terminal

Reference Informations:

*Used in FFC Wire



Ordering information & Specifications:

Unit:mm

| Part NO. | Wire Range | Insulation O.D. | Material | Finish | Qty/reel |
|---------------|------------|-----------------|-----------------|------------------|------------|
| A2550M-TP-C1A | FFC WIRE | ----- | Phosphor Bronze | Tin over Nickel | 20,000 PCS |
| A2550M-GP-C1A | FFC WIRE | ----- | Phosphor Bronze | Gold over Nickel | 20,000 PCS |

Optional Gold plating available but MOQ requested

A2550M-T-C2

2.54mm pitch Crimp Flex Terminal

Reference Informations:

*Used in FFC Wire



Ordering information & Specifications:

Unit:mm

| Part NO. | Wire Range | Insulation O.D. | Material | Finish | Qty/reel |
|--------------|------------|-----------------|-----------------|------------------|------------|
| A2550M-TP-C2 | FFC WIRE | ----- | Phosphor Bronze | Tin over Nickel | 20,000 PCS |
| A2550M-GP-C2 | FFC WIRE | ----- | Phosphor Bronze | Gold over Nickel | 20,000 PCS |

Optional Gold plating available but MOQ requested

A2550M-T-D

2.54mm pitch Crimp Flex Terminal

Reference Informations:

*Used in CJT A2550HM A2550HMA

A2550H-M1 A2550H-M3 series Housing



Ordering information & Specifications:

Unit:mm

| Part NO. | Wire Range | Insulation O.D. | Material | Finish | Qty/reel |
|-------------|------------|-----------------|-----------------|------------------|------------|
| A2550M-TP-D | FFC WIRE | ----- | Phosphor Bronze | Tin over Nickel | 10,000 PCS |
| A2550M-GP-D | FFC WIRE | ----- | Phosphor Bronze | Gold over Nickel | 10,000 PCS |

Optional Gold plating available but MOQ requested

A2550M-T-E

2.54mm pitch Crimp Flex Terminal

Reference Informations:

*Used in FFC Wire



Ordering information & Specifications:

Unit:mm

| Part NO. | Wire Range | Insulation O.D. | Material | Finish | Qty/reel |
|-------------|------------|-----------------|-----------------|------------------|------------|
| A2550M-TP-E | FFC WIRE | ----- | Phosphor Bronze | Tin over Nickel | 10,000 PCS |
| A2550M-GP-E | FFC WIRE | ----- | Phosphor Bronze | Gold over Nickel | 10,000 PCS |

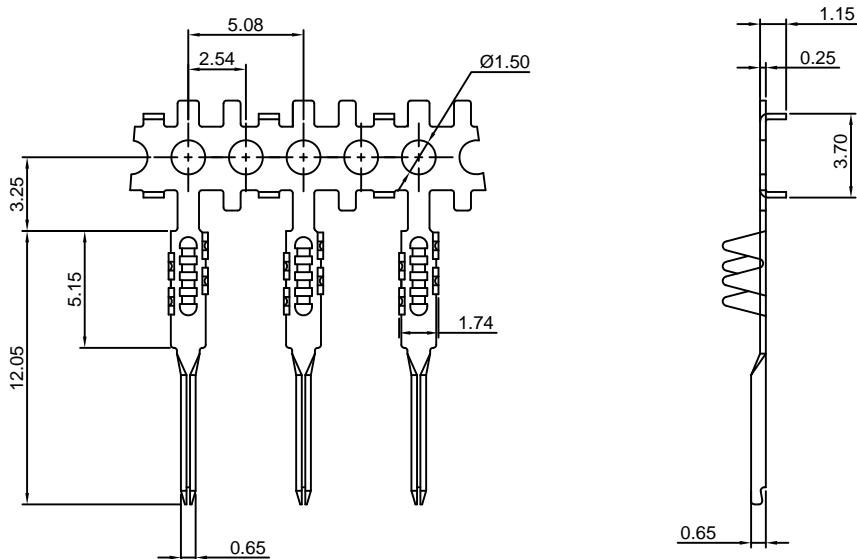
Optional Gold plating available but MOQ requested

A2550M-T-KE

2.54mm pitch Crimp Flex Terminal

Reference Informations:

*Used in FFC Wire



Ordering information & Specifications:

Unit:mm

| Part NO. | Wire Range | Insulation O.D. | Material | Finish | Qty/reel |
|--------------|------------|-----------------|-----------------|------------------|------------|
| A2550M-TP-KE | FFC WIRE | ----- | Phosphor Bronze | Tin over Nickel | 20,000 PCS |
| A2550M-GP-KE | FFC WIRE | ----- | Phosphor Bronze | Gold over Nickel | 20,000 PCS |

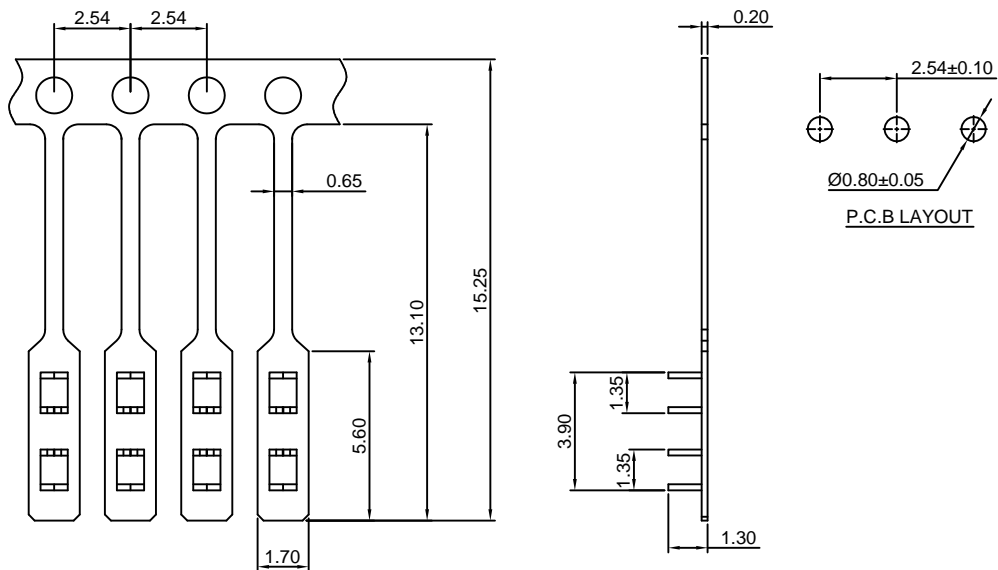
Optional Gold plating available but MOQ requested

A2550M-T-F

2.54mm pitch Crimp Flex Terminal

Reference Informations:

*Used in FFC Wire



Ordering information & Specifications:

Unit:mm

| Part NO. | Wire Range | Insulation O.D. | Material | Finish | Qty/reel |
|-------------|------------|-----------------|-----------------|------------------|------------|
| A2550M-TP-F | FFC WIRE | ----- | Phosphor Bronze | Tin over Nickel | 20,000 PCS |
| A2550M-GP-F | FFC WIRE | ----- | Phosphor Bronze | Gold over Nickel | 20,000 PCS |

Optional Gold plating available but MOQ requested

A2550M-T-G

2.54mm pitch Crimp Flex Terminal

Reference Informations:

*Used in FFC Wire



Ordering information & Specifications:

Unit:mm

| Part NO. | Wire Range | Insulation O.D. | Material | Finish | Qty/reel |
|-------------|------------|-----------------|-----------------|------------------|------------|
| A2550M-TP-G | FFC WIRE | ----- | Phosphor Bronze | Tin over Nickel | 20,000 PCS |
| A2550M-GP-G | FFC WIRE | ----- | Phosphor Bronze | Gold over Nickel | 20,000 PCS |

Optional Gold plating available but MOQ requested

A2550M-T-J

2.54mm pitch Crimp Flex Terminal

Reference Informations:

*Used in FFC Wire



Ordering information & Specifications:

Unit:mm

| Part NO. | Wire Range | Insulation O.D. | Material | Finish | Qty/reel |
|-------------|------------|-----------------|-----------------|------------------|------------|
| A2550M-TP-J | FFC WIRE | ----- | Phosphor Bronze | Tin over Nickel | 20,000 PCS |
| A2550M-GP-J | FFC WIRE | ----- | Phosphor Bronze | Gold over Nickel | 20,000 PCS |

Optional Gold plating available but MOQ requested

A2550M-T-K

2.54mm pitch Crimp Flex Terminal

Reference Informations:

*Used in FFC Wire



Ordering information & Specifications:

Unit:mm

| Part NO. | Wire Range | Insulation O.D. | Material | Finish | Qty/reel |
|-------------|------------|-----------------|-----------------|------------------|------------|
| A2550M-TP-K | FFC WIRE | ----- | Phosphor Bronze | Tin over Nickel | 20,000 PCS |
| A2550M-GP-K | FFC WIRE | ----- | Phosphor Bronze | Gold over Nickel | 20,000 PCS |

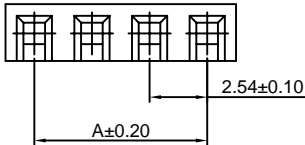
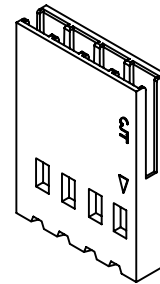
Optional Gold plating available but MOQ requested

A2550H-XP

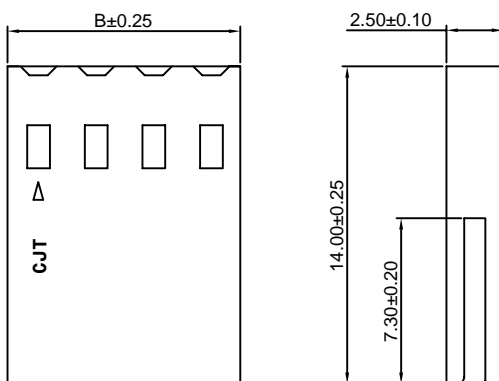
2.54mm Pitch Crimp Flex Housing

Reference Informations:

- *Material:PBT30%GF,UL94V-0
- *Suitable CJT A2550 series Terminal (A2550-T(-H), A2550-T(-H)-CR, A2550-T-A, A2550-T-C, A2550M-T)
- *Mates with CJT A2541 series Wafer
- *Color:Black



Ordering Information:
A2550H-XP - ***
 1 2
 1.Part No.
 2.Material:
 (blank):PBT30%GF,UL94V-0
 GWT:PBT,UL94V-0,GWT 750°C



Ordering Information & Dimensions:

| PART NO. | Dimensions | | PART NO. | Dimensions | |
|----------|------------|-------|----------|------------|-------|
| | A | B | | A | B |
| 2P | 2.54 | 5.08 | 20P | 48.26 | 50.80 |
| 3P | 5.08 | 7.62 | 21P | 50.80 | 53.34 |
| 4P | 7.62 | 10.16 | 22P | 53.34 | 55.88 |
| 5P | 10.16 | 12.70 | 23P | 55.88 | 58.42 |
| 6P | 12.70 | 15.24 | 24P | 58.42 | 60.96 |
| 7P | 15.24 | 17.78 | 25P | 60.96 | 63.50 |
| 8P | 17.78 | 20.32 | 26P | 63.50 | 66.04 |
| 9P | 20.32 | 22.86 | 27P | 66.04 | 68.58 |
| 10P | 22.86 | 25.40 | 28P | 68.58 | 71.12 |
| 11P | 25.40 | 27.94 | 29P | 71.12 | 73.66 |
| 12P | 27.94 | 30.48 | 30P | 73.66 | 76.20 |
| 13P | 30.48 | 33.02 | 31P | 76.20 | 78.74 |
| 14P | 33.02 | 35.56 | 32P | 78.74 | 81.28 |
| 15P | 35.56 | 38.10 | 33P | 81.28 | 83.82 |
| 16P | 38.10 | 40.64 | 34P | 83.82 | 86.36 |
| 17P | 40.64 | 43.18 | 35P | 86.36 | 88.90 |
| 18P | 43.18 | 45.72 | 36P | 88.90 | 91.44 |
| 19P | 45.72 | 48.26 | | | |

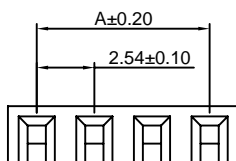
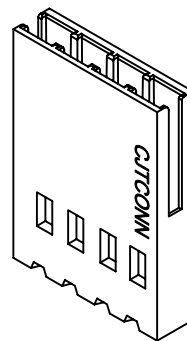
Unit: mm

A2550HH-XP

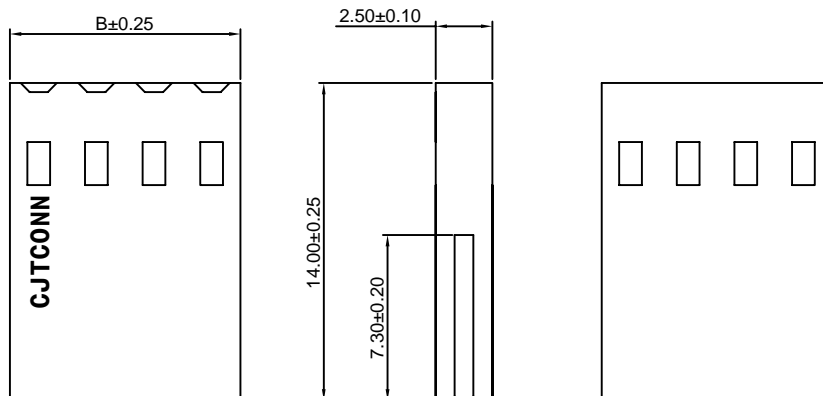
2.54mm Pitch Crimp Flex Housing

Reference Informations:

- *Material:PBT30%GF,UL94V-0
- *Suitable CJT A2550 series Terminal (A2550-T(-H), A2550-T(-H)-CR, A2550-T-A, A2550-T-C, A2550M-T)
- *Mates with CJT A2541 series Wafer
- *Color:Black



Ordering Information:
A2550HH-XP - ***
 1 2
 1.Part No.
 2.Material:
 (blank):PBT30%GF,UL94V-0
 GWT:PBT,UL94V-0,GWT 750°C



Ordering Information & Dimensions:

| PART NO. | Dimensions | |
|----------|------------|-------|
| | A | B |
| 2P | 2.54 | 5.08 |
| 3P | 5.08 | 7.62 |
| 4P | 7.62 | 10.16 |
| 5P | 10.16 | 12.70 |
| 6P | 12.70 | 15.24 |
| 7P | 15.24 | 17.78 |
| 8P | 17.78 | 20.32 |
| 9P | 20.32 | 22.86 |
| 10P | 22.86 | 25.40 |
| 11P | 25.40 | 27.94 |
| 12P | 27.94 | 30.48 |
| 13P | 30.48 | 33.02 |
| 14P | 33.02 | 35.56 |
| 15P | 35.56 | 38.10 |
| 16P | 38.10 | 40.64 |
| 17P | 40.64 | 43.18 |
| 18P | 43.18 | 45.72 |
| 19P | 45.72 | 48.26 |
| 20P | 48.26 | 50.80 |
| 21P | 50.80 | 53.34 |
| 22P | 53.34 | 55.88 |
| 23P | 55.88 | 58.42 |
| 24P | 58.42 | 60.96 |
| 25P | 60.96 | 63.50 |

Unit: mm

A2550HA-XP

2.54mm Pitch Crimp Flex Housing

Reference Informations:

- *Material:PBT30%GF,UL94V-0
- *Suitable CJT A2550 series Terminal (A2550-T(-H), A2550-T(-H)-CR, A2550-T-A, A2550-T-C,)
- *Mates with CJT A2549WVB,WRB-XP series Wafer
- *Color:Black

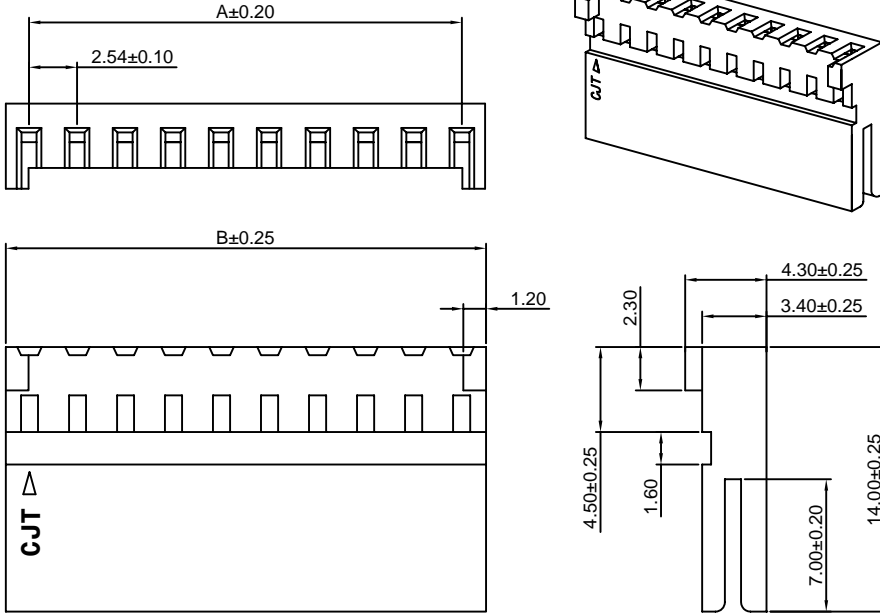
Ordering Information:

- A2550HA-XP - ***
 1 2
 1.Part No.
 2.Material:
 (blank):PBT30%GF,UL94V-0
 GWT:PBT,UL94V-0,GWT 750°C

Ordering Information & Dimensions:

| PART NO. | Dimensions | |
|----------|------------|-------|
| | A | B |
| 2P | 2.54 | 5.08 |
| 3P | 5.08 | 7.62 |
| 4P | 7.62 | 10.16 |
| 5P | 10.16 | 12.70 |
| 6P | 12.70 | 15.24 |
| 7P | 15.24 | 17.78 |
| 8P | 17.78 | 20.32 |
| 9P | 20.32 | 22.86 |
| 10P | 22.86 | 25.40 |
| 11P | 25.40 | 27.94 |
| 12P | 27.94 | 30.48 |
| 13P | 30.48 | 33.02 |
| 14P | 33.02 | 35.56 |
| 15P | 35.56 | 38.10 |
| 16P | 38.10 | 40.64 |
| 17P | 40.64 | 43.18 |
| 18P | 43.18 | 45.72 |
| 19P | 45.72 | 48.26 |
| 20P | 48.26 | 50.80 |
| 21P | 50.80 | 53.34 |
| 22P | 53.34 | 55.88 |
| 23P | 55.88 | 58.42 |
| 24P | 58.42 | 60.96 |
| 25P | 60.96 | 63.50 |

Unit: mm



A2550HB-XP

2.54mm Pitch Crimp Flex Housing

Reference Informations:

- *Material:PBT30%GF,UL94V-0
- *Suitable CJT A2550 series Terminal (A2550-T(-H), A2550-T(-H)-CR, A2550-T-A, A2550-T-C,)
- *Mates with CJT A2549WVB,WRB-XP series Wafer
- *Color:Black

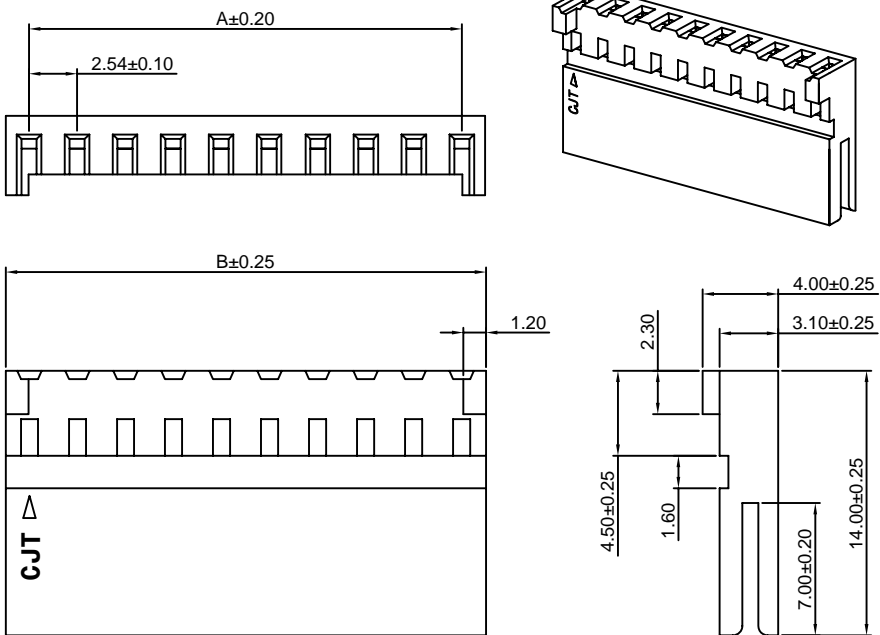
Ordering Information:

- A2550HB-XP - ***
 1 2
 1.Part No.
 2.Material:
 (blank):PBT30%GF,UL94V-0
 GWT:PBT,UL94V-0,GWT 750°C

Ordering Information & Dimensions:

| PART NO. | Dimensions | |
|----------|------------|-------|
| | A | B |
| 2P | 2.54 | 5.08 |
| 3P | 5.08 | 7.62 |
| 4P | 7.62 | 10.16 |
| 5P | 10.16 | 12.70 |
| 6P | 12.70 | 15.24 |
| 7P | 15.24 | 17.78 |
| 8P | 17.78 | 20.32 |
| 9P | 20.32 | 22.86 |
| 10P | 22.86 | 25.40 |
| 11P | 25.40 | 27.94 |
| 12P | 27.94 | 30.48 |
| 13P | 30.48 | 33.02 |
| 14P | 33.02 | 35.56 |
| 15P | 35.56 | 38.10 |
| 16P | 38.10 | 40.64 |
| 17P | 40.64 | 43.18 |
| 18P | 43.18 | 45.72 |
| 19P | 45.72 | 48.26 |
| 20P | 48.26 | 50.80 |
| 21P | 50.80 | 53.34 |
| 22P | 53.34 | 55.88 |
| 23P | 55.88 | 58.42 |
| 24P | 58.42 | 60.96 |
| 25P | 60.96 | 63.50 |

Unit: mm



A2550H-XP-A

2.54mm Pitch Crimp Flex Housing

Reference Informations:

- *Material: PBT30%GF, UL94V-0
- *Suitable CJT A2550 series Terminal (A2550-T(-H), A2550-T(-H)-CR, A2550-T-A, A2550-T-C)
- *Mates with CJT A2550HM-XP, A2547HM-XP series Housing or A2547WVA, WRA-XP series Wafer
- *Color: Black

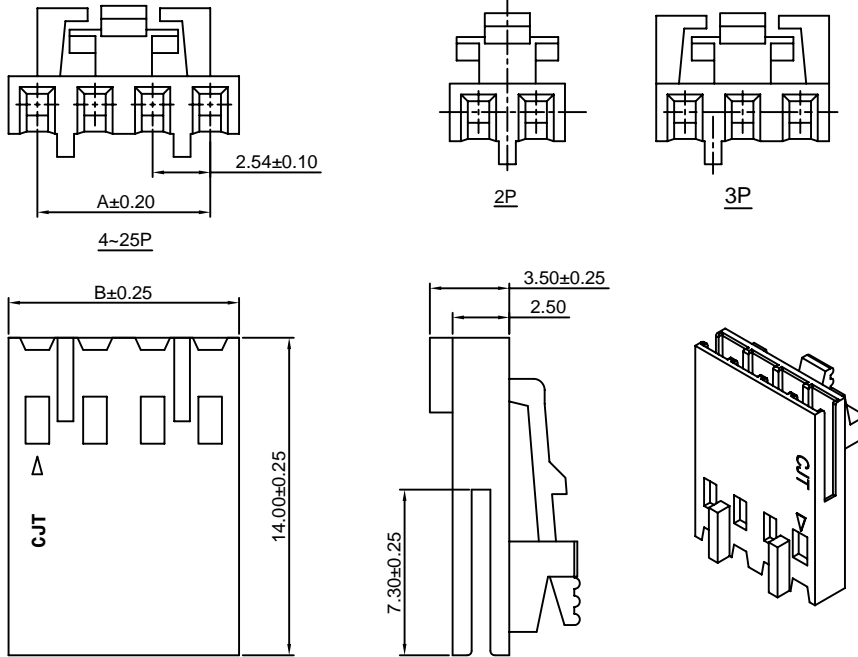
Ordering Information:

- A2550H-XP-A - ***
- 1 / 2
1. Part No.
 2. Material:
(blank): PBT30%GF, UL94V-0
GWT: PBT, UL94V-0, GWT 750°C

Ordering Information & Dimensions:

| PART NO. | Dimensions | |
|----------|------------|-------|
| | A | B |
| 2P | 2.54 | 5.08 |
| 3P | 5.08 | 7.62 |
| 4P | 7.62 | 10.16 |
| 5P | 10.16 | 12.70 |
| 6P | 12.70 | 15.24 |
| 7P | 15.24 | 17.78 |
| 8P | 17.78 | 20.32 |
| 9P | 20.32 | 22.86 |
| 10P | 22.86 | 25.40 |
| 11P | 25.40 | 27.94 |
| 12P | 27.94 | 30.48 |
| 13P | 30.48 | 33.02 |
| 14P | 33.02 | 35.56 |
| 15P | 35.56 | 38.10 |
| 16P | 38.10 | 40.64 |
| 17P | 40.64 | 43.18 |
| 18P | 43.18 | 45.72 |
| 19P | 45.72 | 48.26 |
| 20P | 48.26 | 50.80 |
| 21P | 50.80 | 53.34 |
| 22P | 53.34 | 55.88 |
| 23P | 55.88 | 58.42 |
| 24P | 58.42 | 60.96 |
| 25P | 60.96 | 63.50 |

Unit: mm



A2550H-XP-A1

2.54mm Pitch Crimp Flex Housing

Reference Informations:

- *Material: PBT30%GF, UL94V-0
- *Suitable CJT A2550 series Terminal (A2550-T(-H), A2550-T(-H)-CR, A2550-T-A, A2550-T-C)
- *Mates with CJT A2550HM-XP, A2547HM-XP series Housing or A2547WVA, WRA-XP series Wafer
- *Color: Black

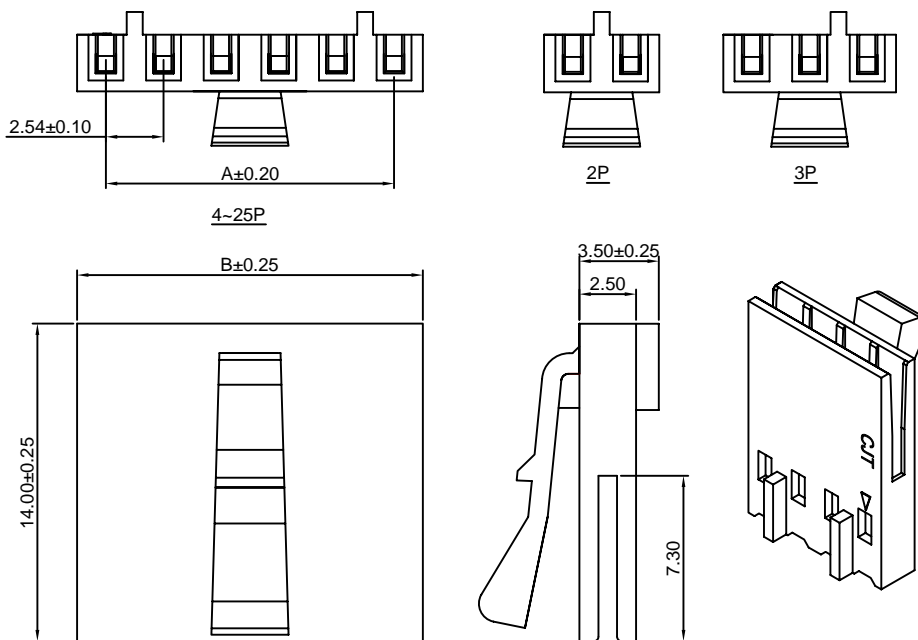
Ordering Information:

- A2550H-XP-A1 - ***
- 1 / 2
1. Part No.
 2. Material:
(blank): PBT30%GF, UL94V-0
GWT: PBT, UL94V-0, GWT 750°C

Ordering Information & Dimensions:

| PART NO. | Dimensions | |
|----------|------------|-------|
| | A | B |
| 2P | 2.54 | 5.08 |
| 3P | 5.08 | 7.62 |
| 4P | 7.62 | 10.16 |
| 5P | 10.16 | 12.70 |
| 6P | 12.70 | 15.24 |
| 7P | 15.24 | 17.78 |
| 8P | 17.78 | 20.32 |
| 9P | 20.32 | 22.86 |
| 10P | 22.86 | 25.40 |
| 11P | 25.40 | 27.94 |
| 12P | 27.94 | 30.48 |
| 13P | 30.48 | 33.02 |
| 14P | 33.02 | 35.56 |
| 15P | 35.56 | 38.10 |
| 16P | 38.10 | 40.64 |
| 17P | 40.64 | 43.18 |
| 18P | 43.18 | 45.72 |
| 19P | 45.72 | 48.26 |
| 20P | 48.26 | 50.80 |
| 21P | 50.80 | 53.34 |
| 22P | 53.34 | 55.88 |
| 23P | 55.88 | 58.42 |
| 24P | 58.42 | 60.96 |
| 25P | 60.96 | 63.50 |

Unit: mm



A2550H-XP-A2

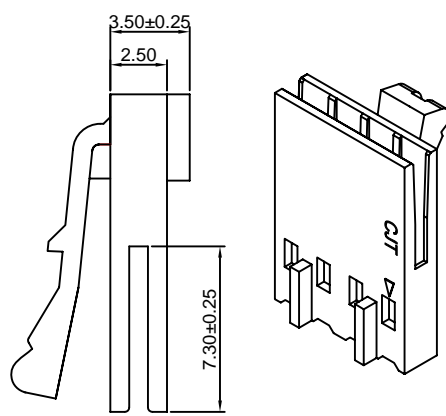
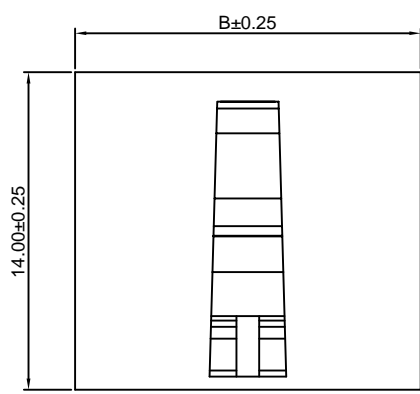
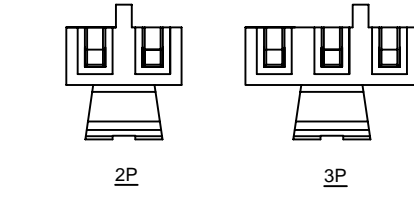
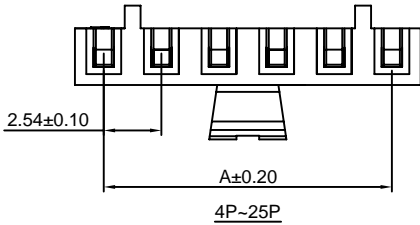
2.54mm Pitch Crimp Flex Housing

Reference Informations:

- *Material:PBT30%GF,UL94V-0
- *Suitable CJT A2550 series Terminal (A2550-T(-H), A2550-T(-H)-CR, A2550-T-A, A2550-T-C)
- *Mates with CJT A2550HM-XP, A2547HM-XP series Housing or A2547WVA, WRA-XP series Wafer
- *Color:Black

Ordering Information:

- A2550H-XP-A2 - ***
 1 2
 1.Part No.
 2.Material:
 (blank):PBT30%GF,UL94V-0
 GWT:PBT,UL94V-0,GWT 750°C



Ordering Information & Dimensions:

| PART NO. | Dimensions | |
|----------|------------|-------|
| | A | B |
| 2P | 2.54 | 5.08 |
| 3P | 5.08 | 7.62 |
| 4P | 7.62 | 10.16 |
| 5P | 10.16 | 12.70 |
| 6P | 12.70 | 15.24 |
| 7P | 15.24 | 17.78 |
| 8P | 17.78 | 20.32 |
| 9P | 20.32 | 22.86 |
| 10P | 22.86 | 25.40 |
| 11P | 25.40 | 27.94 |
| 12P | 27.94 | 30.48 |
| 13P | 30.48 | 33.02 |
| 14P | 33.02 | 35.56 |
| 15P | 35.56 | 38.10 |
| 16P | 38.10 | 40.64 |
| 17P | 40.64 | 43.18 |
| 18P | 43.18 | 45.72 |
| 19P | 45.72 | 48.26 |
| 20P | 48.26 | 50.80 |
| 21P | 50.80 | 53.34 |
| 22P | 53.34 | 55.88 |
| 23P | 55.88 | 58.42 |
| 24P | 58.42 | 60.96 |
| 25P | 60.96 | 63.50 |

Unit: mm

A2550H-XP-A2H

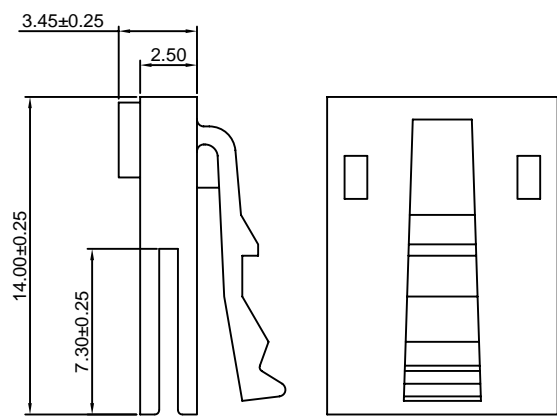
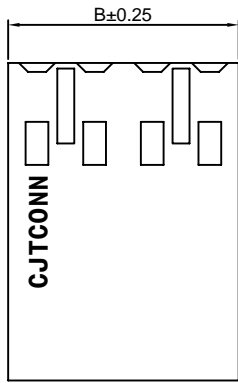
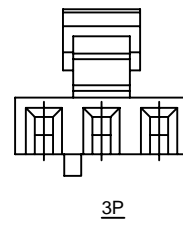
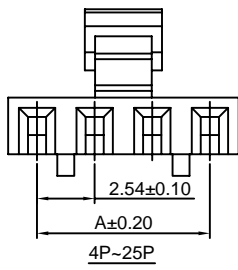
2.54mm Pitch Crimp Flex Housing

Reference Informations:

- *Material:PBT30%GF,UL94V-0
- *Suitable CJT A2550 series Terminal (A2550-T(-H), A2550-T(-H)-CR, A2550-T-A, A2550-T-C)
- *Mates with CJT A2550HM-XP, A2547HM-XP series Housing or A2547WVA, WRA-XP series Wafer
- *Color:Black

Ordering Information:

- A2550H-XP-A2H - ***
 1 2
 1.Part No.
 2.Material:
 (blank):PBT30%GF,UL94V-0
 GWT:PBT,UL94V-0,GWT 750°C



Ordering Information & Dimensions:

| PART NO. | Dimensions | |
|----------|------------|-------|
| | A | B |
| 3P | 5.08 | 7.62 |
| 4P | 7.62 | 10.16 |
| 5P | 10.16 | 12.70 |
| 6P | 12.70 | 15.24 |
| 7P | 15.24 | 17.78 |
| 8P | 17.78 | 20.32 |
| 9P | 20.32 | 22.86 |
| 10P | 22.86 | 25.40 |
| 11P | 25.40 | 27.94 |
| 12P | 27.94 | 30.48 |
| 13P | 30.48 | 33.02 |
| 14P | 33.02 | 35.56 |
| 15P | 35.56 | 38.10 |
| 16P | 38.10 | 40.64 |
| 17P | 40.64 | 43.18 |
| 18P | 43.18 | 45.72 |
| 19P | 45.72 | 48.26 |
| 20P | 48.26 | 50.80 |
| 21P | 50.80 | 53.34 |
| 22P | 53.34 | 55.88 |
| 23P | 55.88 | 58.42 |
| 24P | 58.42 | 60.96 |
| 25P | 60.96 | 63.50 |

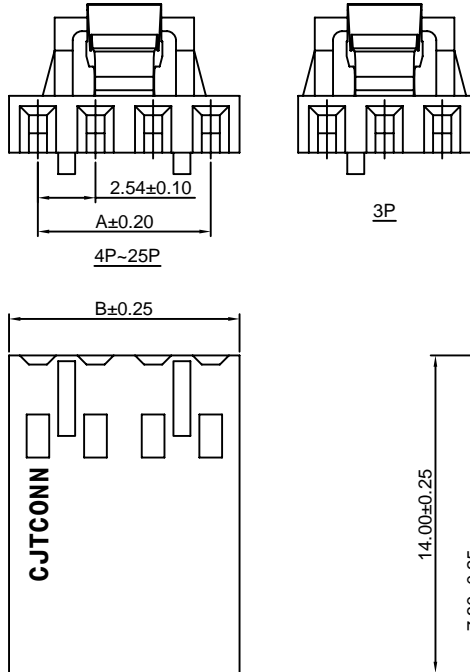
Unit: mm

A2550H-XP-A3

2.54mm Pitch Crimp Flex Housing

Reference Informations:

- *Material: PBT30%GF,UL94V-0
- *Suitable CJT A2550 series Terminal (A2550-T(-H), A2550-T(-H)-CR, A2550-T-A, A2550-T-C)
- *Mates with CJT A2550HM-XP,A2547HM-XP series Housing or A2547WVA,WRA-XP series Wafer
- *Color:Black



Ordering Information:
A2550H-XP-A3 - ***
 $\frac{1}{2}$
 1. Part No.
 2. Material:
 (blank):PBT30%GF,UL94V-0
 GWT:PBT,UL94V-0,GWT 750°C

Ordering Information & Dimensions:

| PART NO. | Dimensions | |
|----------|------------|-------|
| | A | B |
| 3P | 5.08 | 7.62 |
| 4P | 7.62 | 10.16 |
| 5P | 10.16 | 12.70 |
| 6P | 12.70 | 15.24 |
| 7P | 15.24 | 17.78 |
| 8P | 17.78 | 20.32 |
| 9P | 20.32 | 22.86 |
| 10P | 22.86 | 25.40 |
| 11P | 25.40 | 27.94 |
| 12P | 27.94 | 30.48 |
| 13P | 30.48 | 33.02 |
| 14P | 33.02 | 35.56 |
| 15P | 35.56 | 38.10 |
| 16P | 38.10 | 40.64 |
| 17P | 40.64 | 43.18 |
| 18P | 43.18 | 45.72 |
| 19P | 45.72 | 48.26 |
| 20P | 48.26 | 50.80 |
| 21P | 50.80 | 53.34 |
| 22P | 53.34 | 55.88 |
| 23P | 55.88 | 58.42 |
| 24P | 58.42 | 60.96 |
| 25P | 60.96 | 63.50 |

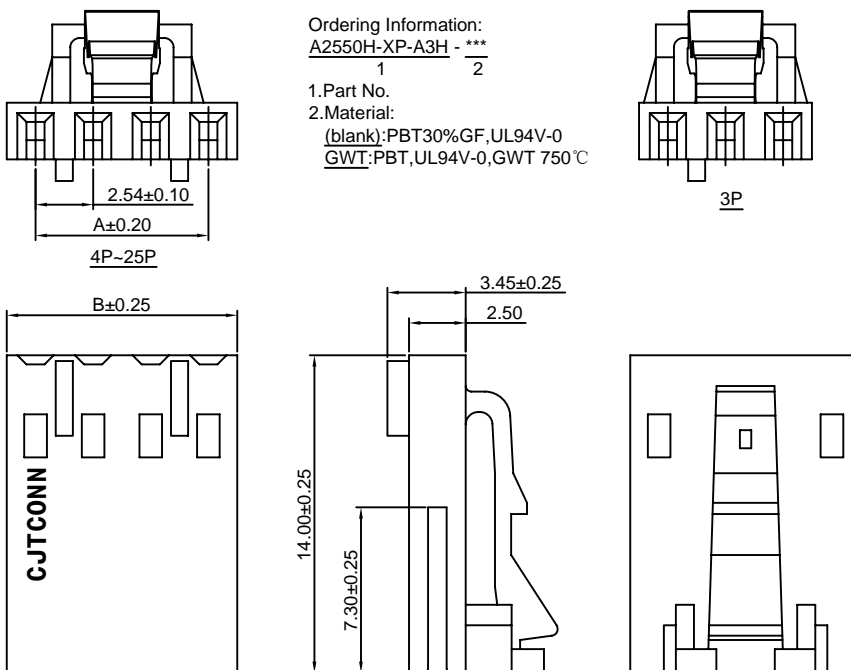
Unit: mm

A2550H-XP-A3H

2.54mm Pitch Crimp Flex Housing

Reference Informations:

- *Material:PBT30%GF,UL94V-0
- *Suitable CJT A2550 series Terminal (A2550-T(-H), A2550-T(-H)-CR, A2550-T-A, A2550-T-C)
- *Mates with CJT A2550HM-XP, A2547HM-XP series Housing or A2547WVA,WRA-XP series Wafer
- *Color:Black



Ordering Information:
A2550H-XP-A3H - ***
 $\frac{1}{2}$
 1. Part No.
 2. Material:
 (blank):PBT30%GF,UL94V-0
 GWT:PBT,UL94V-0,GWT 750°C

Ordering Information & Dimensions:

| PART NO. | Dimensions | |
|----------|------------|-------|
| | A | B |
| 3P | 5.08 | 7.62 |
| 4P | 7.62 | 10.16 |
| 5P | 10.16 | 12.70 |
| 6P | 12.70 | 15.24 |
| 7P | 15.24 | 17.78 |
| 8P | 17.78 | 20.32 |
| 9P | 20.32 | 22.86 |
| 10P | 22.86 | 25.40 |
| 11P | 25.40 | 27.94 |
| 12P | 27.94 | 30.48 |
| 13P | 30.48 | 33.02 |
| 14P | 33.02 | 35.56 |
| 15P | 35.56 | 38.10 |
| 16P | 38.10 | 40.64 |
| 17P | 40.64 | 43.18 |
| 18P | 43.18 | 45.72 |
| 19P | 45.72 | 48.26 |
| 20P | 48.26 | 50.80 |
| 21P | 50.80 | 53.34 |
| 22P | 53.34 | 55.88 |
| 23P | 55.88 | 58.42 |
| 24P | 58.42 | 60.96 |
| 25P | 60.96 | 63.50 |

Unit: mm

A2550H-XP-B

2.54mm Pitch Crimp Flex Housing

Reference Informations:

- *Material:PBT30%GF,UL94V-0
- *Suitable CJT A2550 series Terminal (A2550-T(H), A2550-T(H)-CR, A2550-T-A, A2550-T-C)
- *Mates with CJT A2547HMA-XP series Housing or A2547 series Wafer
- *Color:Black

Ordering Information:

A2550H-XP-B - ***
1 2

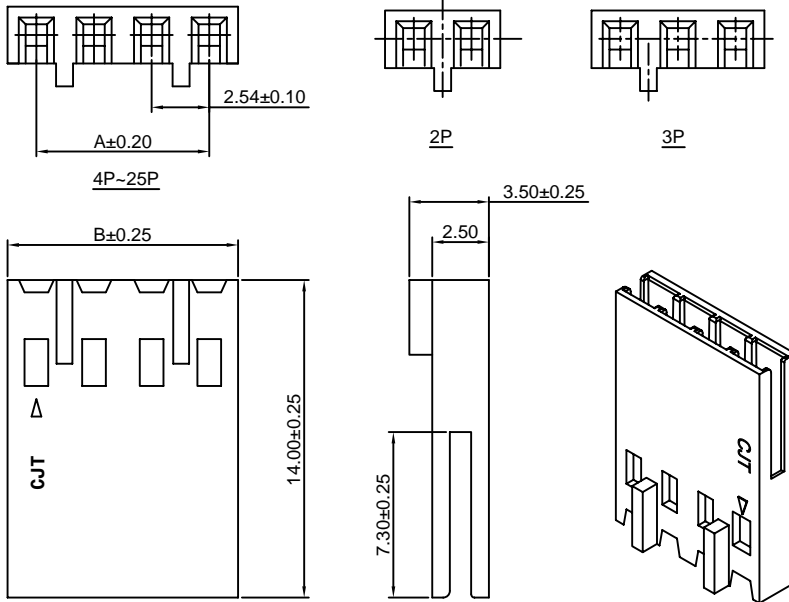
- 1.Part No.
- 2.Material:

(blank):PBT30%GF,UL94V-0
GWT:PBT,UL94V-0,GWT 750 °C

Ordering Information & Dimensions:

| PART NO. | Dimensions | |
|----------|------------|-------|
| | A | B |
| 2P | 2.54 | 5.08 |
| 3P | 5.08 | 7.62 |
| 4P | 7.62 | 10.16 |
| 5P | 10.16 | 12.70 |
| 6P | 12.70 | 15.24 |
| 7P | 15.24 | 17.78 |
| 8P | 17.78 | 20.32 |
| 9P | 20.32 | 22.86 |
| 10P | 22.86 | 25.40 |
| 11P | 25.40 | 27.94 |
| 12P | 27.94 | 30.48 |
| 13P | 30.48 | 33.02 |
| 14P | 33.02 | 35.56 |
| 15P | 35.56 | 38.10 |
| 16P | 38.10 | 40.64 |
| 17P | 40.64 | 43.18 |
| 18P | 43.18 | 45.72 |
| 19P | 45.72 | 48.26 |
| 20P | 48.26 | 50.80 |
| 21P | 50.80 | 53.34 |
| 22P | 53.34 | 55.88 |
| 23P | 55.88 | 58.42 |
| 24P | 58.42 | 60.96 |
| 25P | 60.96 | 63.50 |

Unit: mm



A2550H-XP-BH

2.54mm Pitch Crimp Flex Housing

Reference Informations:

- *Material:PBT30%GF,UL94V-0
- *Suitable CJT A2550 series Terminal (A2550-T(H), A2550-T(H)-CR, A2550-T-A, A2550-T-C)
- *Mates with CJT A2547HMA-XP series Housing or A2547 series Wafer
- *Color:Black

Ordering Information:

A2550H-XP-BH - ***
1 2

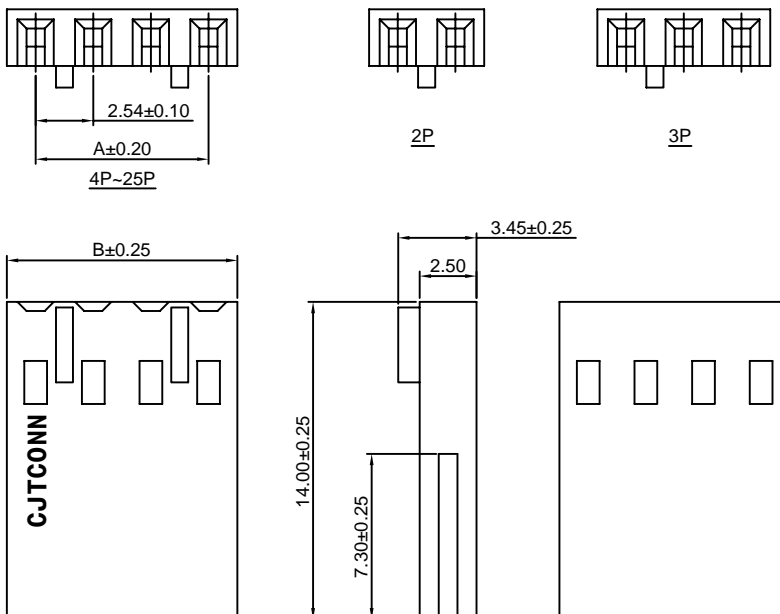
- 1.Part No.
- 2.Material:

(blank):PBT30%GF,UL94V-0
GWT:PBT,UL94V-0,GWT 750 °C

Ordering Information & Dimensions:

| PART NO. | Dimensions | |
|----------|------------|-------|
| | A | B |
| 2P | 2.54 | 5.08 |
| 3P | 5.08 | 7.62 |
| 4P | 7.62 | 10.16 |
| 5P | 10.16 | 12.70 |
| 6P | 12.70 | 15.24 |
| 7P | 15.24 | 17.78 |
| 8P | 17.78 | 20.32 |
| 9P | 20.32 | 22.86 |
| 10P | 22.86 | 25.40 |
| 11P | 25.40 | 27.94 |
| 12P | 27.94 | 30.48 |
| 13P | 30.48 | 33.02 |
| 14P | 33.02 | 35.56 |
| 15P | 35.56 | 38.10 |
| 16P | 38.10 | 40.64 |
| 17P | 40.64 | 43.18 |
| 18P | 43.18 | 45.72 |
| 19P | 45.72 | 48.26 |
| 20P | 48.26 | 50.80 |
| 21P | 50.80 | 53.34 |
| 22P | 53.34 | 55.88 |
| 23P | 55.88 | 58.42 |
| 24P | 58.42 | 60.96 |
| 25P | 60.96 | 63.50 |

Unit: mm

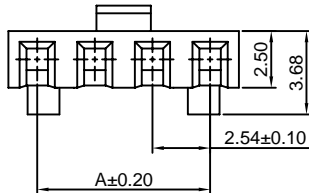


A2550H-XP-C

2.54mm Pitch Crimp Flex Housing

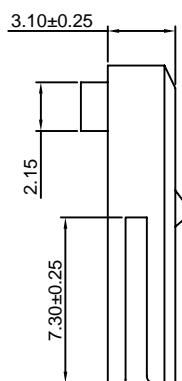
Reference Informations:

- *Material: PBT30%GF, UL94V-0
- *Suitable CJT A2550 series Terminal (A2550-T(-H), A2550-T(-H)-CR, A2550-T-A, A2550-T-C)
- *Mates with CJT A2547WVE, WRE-XP, A2549WV, WR-XP series Wafer
- *Color: Black



Ordering Information:
A2550H-XP-C - ***
 1 2

1. Part No.
 2. Material:
 (blank): PBT30%GF, UL94V-0
 GWT: PBT, UL94V-0, GWT 750°C



Ordering Information & Dimensions:

| PART NO. | Dimensions | |
|----------|------------|-------|
| | A | B |
| 2P | 2.54 | 5.08 |
| 3P | 5.08 | 7.62 |
| 4P | 7.62 | 10.16 |
| 5P | 10.16 | 12.70 |
| 6P | 12.70 | 15.24 |
| 7P | 15.24 | 17.78 |
| 8P | 17.78 | 20.32 |
| 9P | 20.32 | 22.86 |
| 10P | 22.86 | 25.40 |
| 11P | 25.40 | 27.94 |
| 12P | 27.94 | 30.48 |
| 13P | 30.48 | 33.02 |
| 14P | 33.02 | 35.56 |
| 15P | 35.56 | 38.10 |
| 16P | 38.10 | 40.64 |
| 17P | 40.64 | 43.18 |
| 18P | 43.18 | 45.72 |
| 19P | 45.72 | 48.26 |
| 20P | 48.26 | 50.80 |
| 21P | 50.80 | 53.34 |
| 22P | 53.34 | 55.88 |
| 23P | 55.88 | 58.42 |
| 24P | 58.42 | 60.96 |
| 25P | 60.96 | 63.50 |

Unit: mm

A2550H-XP-C1

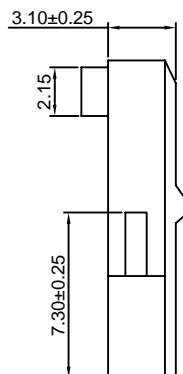
2.54mm Pitch Crimp Flex Housing

Reference Informations:

- *Material: PBT30%GF, UL94V-0
- *Suitable CJT A2550 series Terminal (A2550-T(-H), A2550-T(-H)-CR, A2550-T-A, A2550-T-C)
- *Mates with CJT A2547WVE, WRE-XP, A2549WV, WR-XP series Wafer
- *Color: Black

Ordering Information:
A2550H-XP-C1 - ***
 1 2

1. Part No.
 2. Material:
 (blank): PBT30%GF, UL94V-0
 GWT: PBT, UL94V-0, GWT 750°C



Ordering Information & Dimensions:

| PART NO. | Dimensions | | |
|----------|------------|-------|-------|
| | A | B | C |
| 2P | 2.54 | 5.08 | 7.62 |
| 3P | 5.08 | 7.62 | 10.16 |
| 4P | 7.62 | 10.16 | 12.70 |
| 5P | 10.16 | 12.70 | 15.24 |
| 6P | 12.70 | 15.24 | 17.78 |
| 7P | 15.24 | 17.78 | 20.32 |
| 8P | 17.78 | 20.32 | 22.86 |
| 9P | 20.32 | 22.86 | 25.40 |
| 10P | 22.86 | 25.40 | 27.94 |
| 11P | 25.40 | 27.94 | 30.48 |
| 12P | 27.94 | 30.48 | 33.02 |
| 13P | 30.48 | 33.02 | 35.56 |
| 14P | 33.02 | 35.56 | 38.10 |
| 15P | 35.56 | 38.10 | 40.64 |
| 16P | 38.10 | 40.64 | 43.18 |
| 17P | 40.64 | 43.18 | 45.72 |
| 18P | 43.18 | 45.72 | 48.26 |
| 19P | 45.72 | 48.26 | 50.80 |
| 20P | 48.26 | 50.80 | 53.34 |
| 21P | 50.80 | 53.34 | 55.88 |
| 22P | 53.34 | 55.88 | 58.42 |
| 23P | 55.88 | 58.42 | 60.96 |
| 24P | 58.42 | 60.96 | 63.50 |
| 25P | 60.96 | 63.50 | 66.04 |

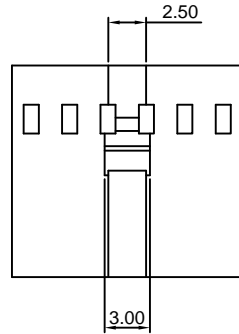
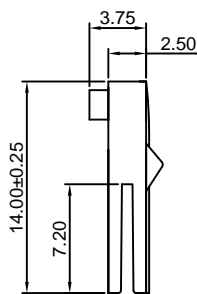
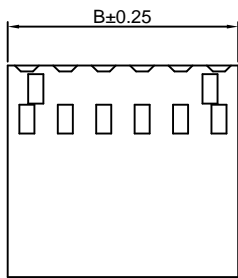
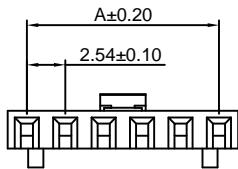
Unit: mm

A2550H-XP-CH

2.54mm Pitch Crimp Flex Housing

Reference Informations:

- *Material: PBT30%GF, UL94V-0
- *Suitable CJT A2550 series Terminal (A2550-T(-H), A2550-T(-H)-CR, A2550-T-A, A2550-T-C)
- *Mates with CJT A2547WVE, WRE-XP, A2549WV, WR-XP series Wafer
- *Color: Black



Ordering Information:
A2550H-XP-CH - ***
 1 2
 1. Part No.
 2. Material:
 (blank): PBT30%GF, UL94V-0
 GWT: PBT, UL94V-0, GWT 750°C

Ordering Information & Dimensions:

| PART NO. | Dimensions | |
|----------|------------|-------|
| | A | B |
| 2P | 2.54 | 5.08 |
| 3P | 5.08 | 7.62 |
| 4P | 7.62 | 10.16 |
| 5P | 10.16 | 12.70 |
| 6P | 12.70 | 15.24 |
| 7P | 15.24 | 17.78 |
| 8P | 17.78 | 20.32 |
| 9P | 20.32 | 22.86 |
| 10P | 22.86 | 25.40 |
| 11P | 25.40 | 27.94 |
| 12P | 27.94 | 30.48 |
| 13P | 30.48 | 33.02 |
| 14P | 33.02 | 35.56 |
| 15P | 35.56 | 38.10 |
| 16P | 38.10 | 40.64 |
| 17P | 40.64 | 43.18 |
| 18P | 43.18 | 45.72 |
| 19P | 45.72 | 48.26 |
| 20P | 48.26 | 50.80 |
| 21P | 50.80 | 53.34 |
| 22P | 53.34 | 55.88 |
| 23P | 55.88 | 58.42 |
| 24P | 58.42 | 60.96 |
| 25P | 60.96 | 63.50 |

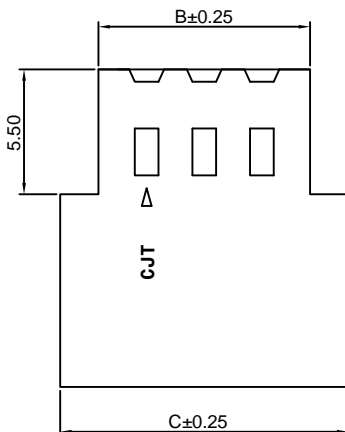
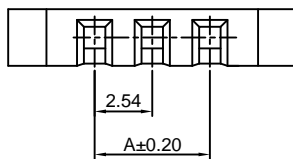
Unit: mm

A2550H-XP-D

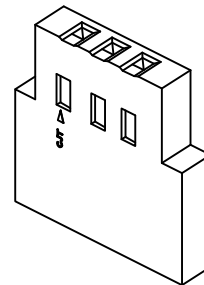
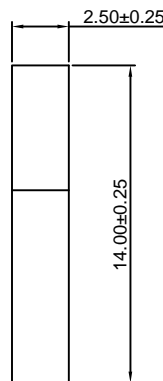
2.54mm Pitch Crimp Flex Housing

Reference Informations:

- *Material: PBT30%GF, UL94V-0
- *Suitable CJT A2550 series Terminal (A2550-T(-H), A2550-T(-H)-CR, A2550-T-A, A2550M-T, A2550-T-C)
- *Mates with CJT A2541 series Wafer
- *Color: Blue



Ordering Information:
A2550H-XP-D - ***
 1 2
 1. Part No.
 2. Material:
 (blank): PBT30%GF, UL94V-0
 GWT: PBT, UL94V-0, GWT 750°C



Ordering Information & Dimensions:

| PART NO. | Dimensions | | | PART NO. | Dimensions | | |
|----------|------------|-------|-------|----------|------------|-------|-------|
| | A | B | C | | A | B | C |
| 2P | 2.54 | 6.81 | 10.16 | 20P | 48.26 | 52.53 | 55.88 |
| 3P | 5.08 | 9.35 | 12.70 | 21P | 50.80 | 55.07 | 58.42 |
| 4P | 7.62 | 11.89 | 15.24 | 22P | 53.34 | 57.61 | 60.96 |
| 5P | 10.16 | 14.43 | 17.78 | 23P | 55.88 | 60.15 | 63.50 |
| 6P | 12.70 | 16.97 | 20.32 | 24P | 58.42 | 62.69 | 66.04 |
| 7P | 15.24 | 19.51 | 22.86 | 25P | 60.96 | 65.23 | 68.58 |
| 8P | 17.78 | 22.05 | 25.40 | 26P | 63.50 | 67.77 | 71.12 |
| 9P | 20.32 | 24.59 | 27.94 | 27P | 66.04 | 70.31 | 73.66 |
| 10P | 22.86 | 27.13 | 30.48 | 28P | 68.58 | 72.85 | 76.20 |
| 11P | 25.40 | 29.67 | 33.02 | 29P | 71.12 | 75.39 | 78.74 |
| 12P | 27.94 | 32.21 | 35.56 | 30P | 73.66 | 77.93 | 81.28 |
| 13P | 30.48 | 34.75 | 38.10 | 31P | 76.20 | 80.47 | 83.82 |
| 14P | 33.02 | 37.29 | 40.64 | 32P | 78.74 | 83.01 | 86.36 |
| 15P | 35.56 | 39.83 | 43.18 | 33P | 81.28 | 85.55 | 88.90 |
| 16P | 38.10 | 42.37 | 45.72 | 34P | 83.82 | 88.09 | 91.44 |
| 17P | 40.64 | 44.91 | 48.26 | 35P | 86.36 | 90.63 | 93.98 |
| 18P | 43.18 | 47.45 | 50.80 | 36P | 88.90 | 93.17 | 96.52 |
| 19P | 45.72 | 49.99 | 53.34 | | | | |

Unit: mm

A2550H-XP-G

2.54mm Pitch Crimp Flex Housing

Reference Informations:

- *Material:PBT30%GF,UL94V-0
- *Suitable CJT A2550 series Terminal (A2550-T-J)
- *Mates with CJT A2541 series Wafer
- *Color:Black

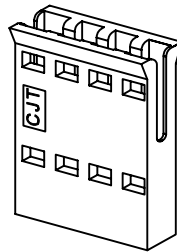
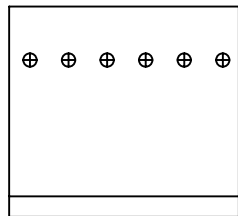
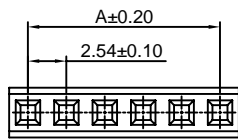
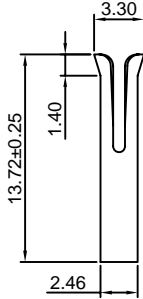
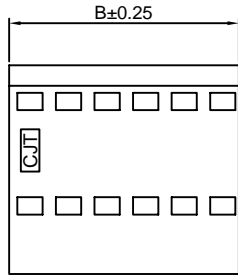
Ordering Information:

A2550H-XP-G - ***
1 2

1.Part No.

2.Material:

(blank):PBT30%GF,UL94V-0
GWT:PBT,UL94V-0,GWT 750°C



Ordering Information & Dimensions:

| PART NO. | Dimensions | | PART NO. | Dimensions | |
|----------|------------|-------|----------|------------|-------|
| | A | B | | A | B |
| 2P | 2.54 | 4.92 | 19P | 45.72 | 48.10 |
| 3P | 5.08 | 7.46 | 20P | 48.26 | 50.64 |
| 4P | 7.62 | 10.00 | 21P | 50.80 | 53.18 |
| 5P | 10.16 | 12.54 | 22P | 53.34 | 55.72 |
| 6P | 12.70 | 15.08 | 23P | 55.88 | 58.26 |
| 7P | 15.24 | 17.62 | 24P | 58.42 | 60.80 |
| 8P | 17.78 | 20.16 | 25P | 60.96 | 63.34 |
| 9P | 20.32 | 22.70 | 26P | 63.50 | 65.88 |
| 10P | 22.86 | 25.24 | 27P | 66.04 | 68.42 |
| 11P | 25.40 | 27.78 | 28P | 68.58 | 70.96 |
| 12P | 27.94 | 30.32 | 29P | 71.12 | 73.50 |
| 13P | 30.48 | 32.86 | 30P | 73.66 | 76.04 |
| 14P | 33.02 | 35.40 | 31P | 76.20 | 78.58 |
| 15P | 35.56 | 37.94 | 32P | 78.74 | 81.12 |
| 16P | 38.10 | 40.48 | 33P | 81.28 | 83.66 |
| 17P | 40.64 | 43.02 | 34P | 83.82 | 86.20 |
| 18P | 43.18 | 45.56 | | | |

Unit: mm

A2550H-XP-G1

2.54mm Pitch Crimp Flex Housing

Reference Informations:

- *Material:PBT30%GF,UL94V-0
- *Suitable CJT A2550 series Terminal (A2550-T-J)
- *Mates with CJT A2541 series Wafer
- *Color:Black

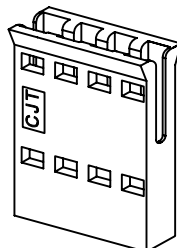
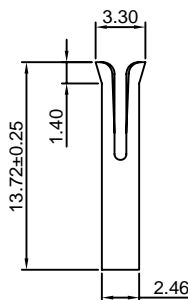
Ordering Information:

A2550H-XP-G1 - ***
1 2

1.Part No.

2.Material:

(blank):PBT30%GF,UL94V-0
GWT:PBT,UL94V-0,GWT 750°C



Ordering Information & Dimensions:

| PART NO. | Dimensions | | PART NO. | Dimensions | |
|----------|------------|-------|----------|------------|-------|
| | A | B | | A | B |
| 2P | 2.54 | 4.92 | 19P | 45.72 | 48.10 |
| 3P | 5.08 | 7.46 | 20P | 48.26 | 50.64 |
| 4P | 7.62 | 10.00 | 21P | 50.80 | 53.18 |
| 5P | 10.16 | 12.54 | 22P | 53.34 | 55.72 |
| 6P | 12.70 | 15.08 | 23P | 55.88 | 58.26 |
| 7P | 15.24 | 17.62 | 24P | 58.42 | 60.80 |
| 8P | 17.78 | 20.16 | 25P | 60.96 | 63.34 |
| 9P | 20.32 | 22.70 | 26P | 63.50 | 65.88 |
| 10P | 22.86 | 25.24 | 27P | 66.04 | 68.42 |
| 11P | 25.40 | 27.78 | 28P | 68.58 | 70.96 |
| 12P | 27.94 | 30.32 | 29P | 71.12 | 73.50 |
| 13P | 30.48 | 32.86 | 30P | 73.66 | 76.04 |
| 14P | 33.02 | 35.40 | 31P | 76.20 | 78.58 |
| 15P | 35.56 | 37.94 | 32P | 78.74 | 81.12 |
| 16P | 38.10 | 40.48 | 33P | 81.28 | 83.66 |
| 17P | 40.64 | 43.02 | 34P | 83.82 | 86.20 |
| 18P | 43.18 | 45.56 | | | |

Unit: mm

A2550H-XP-H

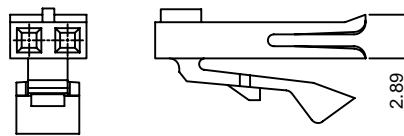
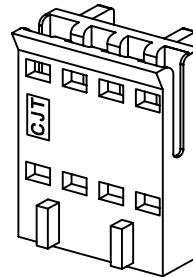
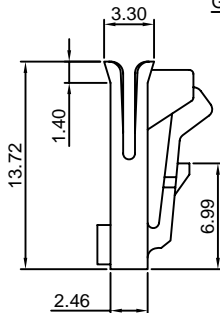
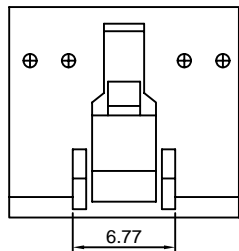
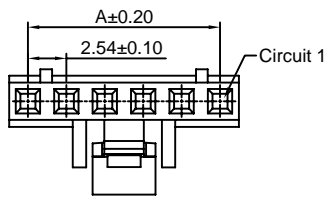
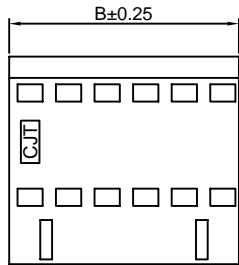
2.54mm Pitch Crimp Flex Housing

Reference Informations:

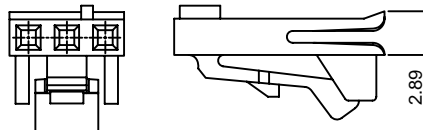
- *Material:PBT30%GF,UL94V-0
- *Suitable CJT A2550 series Terminal (A2550-T-J)
- *Mates with CJT A2547 series Wafer
- *Color:Black

Ordering Information:

- A2550H-XP-H - ***
 $\frac{1}{2}$
- 1.Part No.
 - 2.Material:
 (blank):PBT30%GF,UL94V-0
 GWT:PBT,UL94V-0,GWT 750°C



DETAIL FOR 2 POSN ONLY



DETAIL FOR 3 POSN ONLY

Ordering Information & Dimensions:

| PART NO. | Dimensions | |
|----------|------------|-------|
| | A | B |
| 2P | 2.54 | 4.92 |
| 3P | 5.08 | 7.46 |
| 4P | 7.62 | 10.00 |
| 5P | 10.16 | 12.54 |
| 6P | 12.70 | 15.08 |
| 7P | 15.24 | 17.62 |
| 8P | 17.78 | 20.16 |
| 9P | 20.32 | 22.70 |
| 10P | 22.86 | 25.24 |
| 11P | 25.40 | 27.78 |
| 12P | 27.94 | 30.32 |
| 13P | 30.48 | 32.86 |
| 14P | 33.02 | 35.40 |
| 15P | 35.56 | 37.94 |
| 16P | 38.10 | 40.48 |
| 17P | 40.64 | 43.02 |
| 18P | 43.18 | 45.56 |
| 19P | 45.72 | 48.10 |
| 20P | 48.26 | 50.64 |
| 21P | 50.80 | 53.18 |
| 22P | 53.34 | 55.72 |
| 23P | 55.88 | 58.26 |
| 24P | 58.42 | 60.80 |
| 25P | 60.96 | 63.34 |

Unit: mm

A2550H-XP-H1

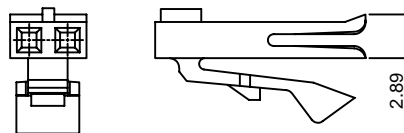
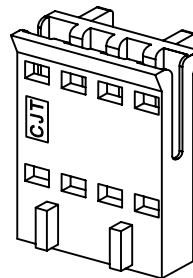
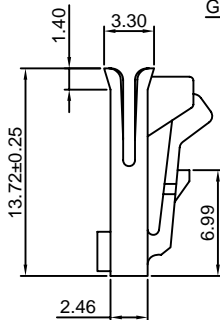
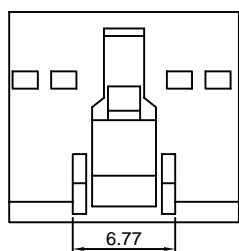
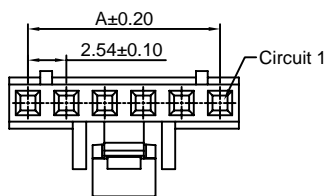
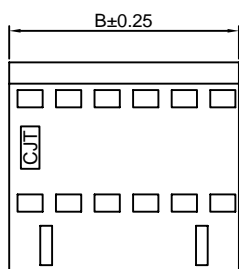
2.54mm Pitch Crimp Flex Housing

Reference Informations:

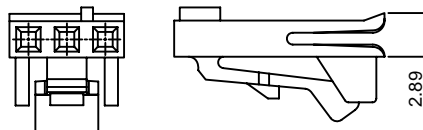
- *Material:PBT30%GF,UL94V-0
- *Suitable CJT A2550 series Terminal (A2550-T-J)
- *Mates with CJT A2547 series Wafer
- *Color:Black

Ordering Information:

- A2550H-XP-H1 - ***
 $\frac{1}{2}$
- 1.Part No.
 - 2.Material:
 (blank):PBT30%GF,UL94V-0
 GWT:PBT,UL94V-0,GWT 750°C



DETAIL FOR 2 POSN ONLY



DETAIL FOR 3 POSN ONLY

Ordering Information & Dimensions:

| PART NO. | Dimensions | |
|----------|------------|-------|
| | A | B |
| 2P | 2.54 | 4.92 |
| 3P | 5.08 | 7.46 |
| 4P | 7.62 | 10.00 |
| 5P | 10.16 | 12.54 |
| 6P | 12.70 | 15.08 |
| 7P | 15.24 | 17.62 |
| 8P | 17.78 | 20.16 |
| 9P | 20.32 | 22.70 |
| 10P | 22.86 | 25.24 |
| 11P | 25.40 | 27.78 |
| 12P | 27.94 | 30.32 |
| 13P | 30.48 | 32.86 |
| 14P | 33.02 | 35.40 |
| 15P | 35.56 | 37.94 |
| 16P | 38.10 | 40.48 |
| 17P | 40.64 | 43.02 |
| 18P | 43.18 | 45.56 |
| 19P | 45.72 | 48.10 |
| 20P | 48.26 | 50.64 |
| 21P | 50.80 | 53.18 |
| 22P | 53.34 | 55.72 |
| 23P | 55.88 | 58.26 |
| 24P | 58.42 | 60.80 |
| 25P | 60.96 | 63.34 |

Unit: mm

A2550H-XP-H2

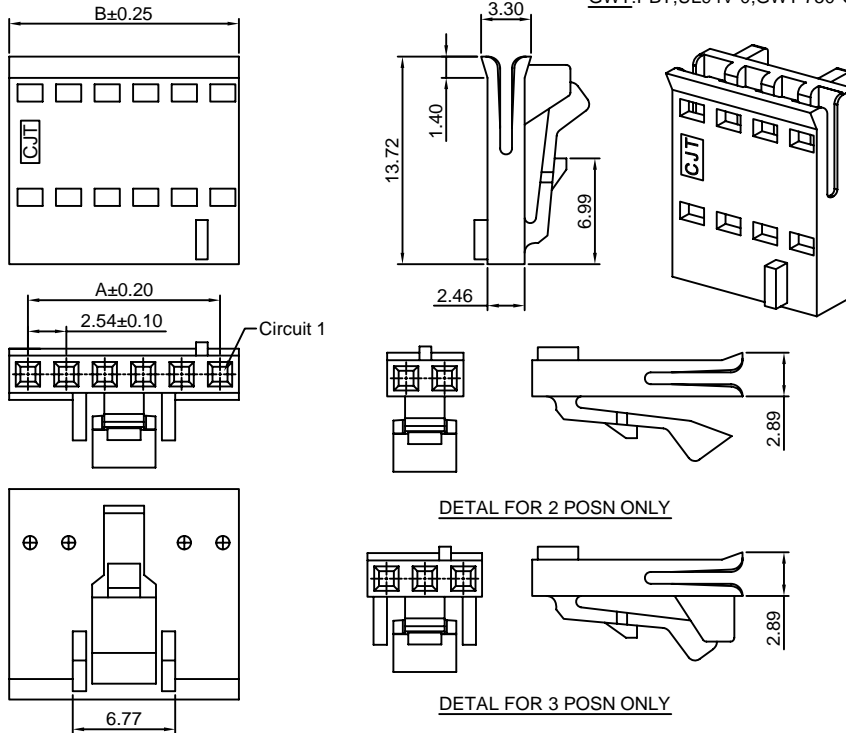
2.54mm Pitch Crimp Flex Housing

Reference Informations:

- *Material:PBT30%GF,UL94V-0
- *Suitable CJT A2550 series Terminal (A2550-T-J)
- *Mates with CJT A2547 series Wafer
- *Color:Black

Ordering Information:

- A2550H-XP-H2 - ***
 $\frac{1}{2}$
 1.Part No.
 2.Material:
 (blank):PBT30%GF,UL94V-0
 GWT:PBT,UL94V-0,GWT 750°C



Ordering Information & Dimensions:

| PART NO. | Dimensions | |
|----------|------------|-------|
| | A | B |
| 2P | 2.54 | 4.92 |
| 3P | 5.08 | 7.46 |
| 4P | 7.62 | 10.00 |
| 5P | 10.16 | 12.54 |
| 6P | 12.70 | 15.08 |
| 7P | 15.24 | 17.62 |
| 8P | 17.78 | 20.16 |
| 9P | 20.32 | 22.70 |
| 10P | 22.86 | 25.24 |
| 11P | 25.40 | 27.78 |
| 12P | 27.94 | 30.32 |
| 13P | 30.48 | 32.86 |
| 14P | 33.02 | 35.40 |
| 15P | 35.56 | 37.94 |
| 16P | 38.10 | 40.48 |
| 17P | 40.64 | 43.02 |
| 18P | 43.18 | 45.56 |
| 19P | 45.72 | 48.10 |
| 20P | 48.26 | 50.64 |
| 21P | 50.80 | 53.18 |
| 22P | 53.34 | 55.72 |
| 23P | 55.88 | 58.26 |
| 24P | 58.42 | 60.80 |
| 25P | 60.96 | 63.34 |

Unit: mm

A2550H-XP-I

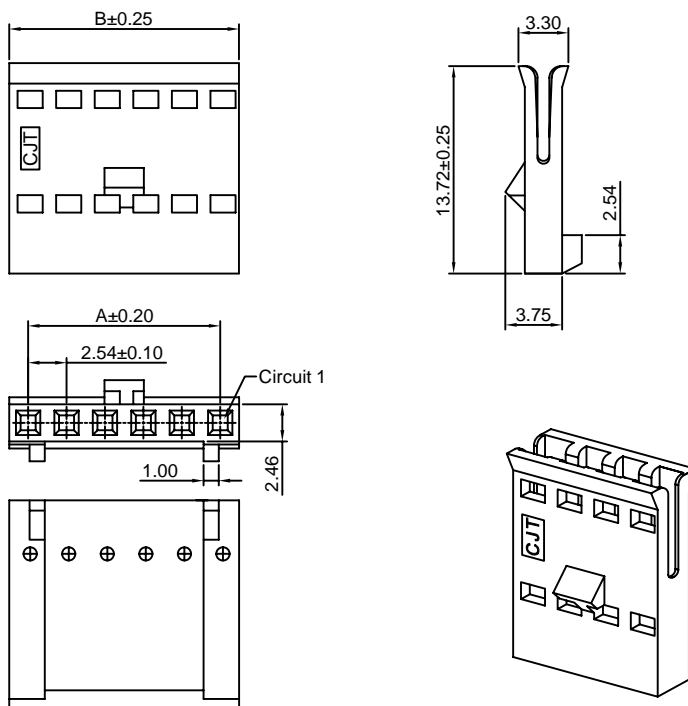
2.54mm Pitch Crimp Flex Housing

Reference Informations:

- *Material:PBT30%GF,UL94V-0
- *Suitable CJT A2550 series Terminal (A2550-T-J)
- *Mates with CJT A2549 series Wafer or A2547WVE,WRE-XP series Wafer
- *Color:Black

Ordering Information:

- A2550H-XP-I - ***
 $\frac{1}{2}$
 1.Part No.
 2.Material:
 (blank):PBT30%GF,UL94V-0
 GWT:PBT,UL94V-0,GWT 750°C



Ordering Information & Dimensions:

| PART NO. | Dimensions | |
|----------|------------|-------|
| | A | B |
| 2P | 2.54 | 4.92 |
| 3P | 5.08 | 7.46 |
| 4P | 7.62 | 10.00 |
| 5P | 10.16 | 12.54 |
| 6P | 12.70 | 15.08 |
| 7P | 15.24 | 17.62 |
| 8P | 17.78 | 20.16 |
| 9P | 20.32 | 22.70 |
| 10P | 22.86 | 25.24 |
| 11P | 25.40 | 27.78 |
| 12P | 27.94 | 30.32 |
| 13P | 30.48 | 32.86 |
| 14P | 33.02 | 35.40 |
| 15P | 35.56 | 37.94 |
| 16P | 38.10 | 40.48 |
| 17P | 40.64 | 43.02 |
| 18P | 43.18 | 45.56 |
| 19P | 45.72 | 48.10 |
| 20P | 48.26 | 50.64 |
| 21P | 50.80 | 53.18 |
| 22P | 53.34 | 55.72 |
| 23P | 55.88 | 58.26 |
| 24P | 58.42 | 60.80 |
| 25P | 60.96 | 63.34 |

Unit: mm

A2550H-XP-I1

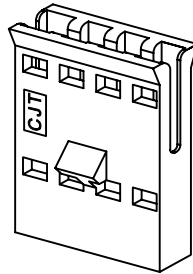
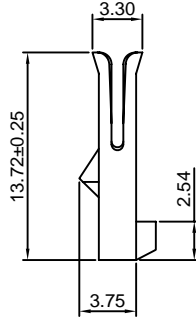
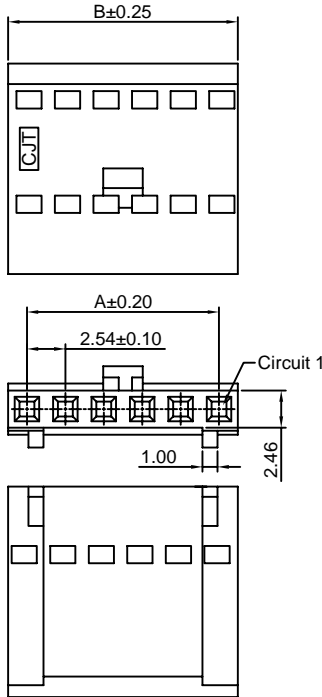
2.54mm Pitch Crimp Flex Housing

Reference Informations:

- *Material: PBT30%GF, UL94V-0
- *Suitable CJT A2550 series Terminal (A2550-T-J)
- *Mates with CJT A2549 series Wafer or A2547WVE, WRE-XP series Wafer
- *Color: Black

Ordering Information:

- A2550H-XP-I1 - ***
 $\frac{1}{2}$
1. Part No.
 2. Material:
 (blank): PBT30%GF, UL94V-0
 GWT: PBT, UL94V-0, GWT 750°C



Ordering Information & Dimensions:

| PART NO. | Dimensions | |
|----------|------------|-------|
| | A | B |
| 2P | 2.54 | 4.92 |
| 3P | 5.08 | 7.46 |
| 4P | 7.62 | 10.00 |
| 5P | 10.16 | 12.54 |
| 6P | 12.70 | 15.08 |
| 7P | 15.24 | 17.62 |
| 8P | 17.78 | 20.16 |
| 9P | 20.32 | 22.70 |
| 10P | 22.86 | 25.24 |
| 11P | 25.40 | 27.78 |
| 12P | 27.94 | 30.32 |
| 13P | 30.48 | 32.86 |
| 14P | 33.02 | 35.40 |
| 15P | 35.56 | 37.94 |
| 16P | 38.10 | 40.48 |
| 17P | 40.64 | 43.02 |
| 18P | 43.18 | 45.56 |
| 19P | 45.72 | 48.10 |
| 20P | 48.26 | 50.64 |
| 21P | 50.80 | 53.18 |
| 22P | 53.34 | 55.72 |
| 23P | 55.88 | 58.26 |
| 24P | 58.42 | 60.80 |
| 25P | 60.96 | 63.34 |

Unit: mm

A2550H-XP-J

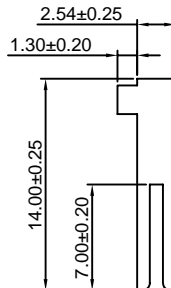
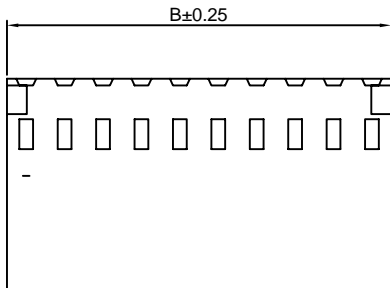
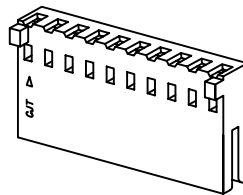
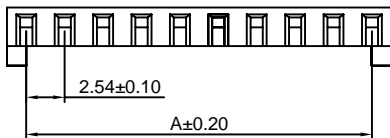
2.54mm Pitch Crimp Flex Housing

Reference Informations:

- *Material: PBT30%GF, UL94V-0
- *Suitable CJT A2550 series Terminal (A2550-T(-H), A2550-T(-H)-CR, A2550-T-A, A2550-T-C, A2550M-T)
- *Mates with CJT A2541 series Wafer
- *Color: Black

Ordering Information:

- A2550H-XP-J - ***
 $\frac{1}{2}$
1. Part No.
 2. Material:
 (blank): PBT30%GF, UL94V-0
 GWT: PBT, UL94V-0, GWT 750°C



Ordering Information & Dimensions:

| PART NO. | Dimensions | |
|----------|------------|-------|
| | A | B |
| 2P | 2.54 | 5.08 |
| 3P | 5.08 | 7.62 |
| 4P | 7.62 | 10.16 |
| 5P | 10.16 | 12.70 |
| 6P | 12.70 | 15.24 |
| 7P | 15.24 | 17.78 |
| 8P | 17.78 | 20.32 |
| 9P | 20.32 | 22.86 |
| 10P | 22.86 | 25.40 |
| 11P | 25.40 | 27.94 |
| 12P | 27.94 | 30.48 |
| 13P | 30.48 | 33.02 |
| 14P | 33.02 | 35.56 |
| 15P | 35.56 | 38.10 |
| 16P | 38.10 | 40.64 |
| 17P | 40.64 | 43.18 |
| 18P | 43.18 | 45.72 |
| 19P | 45.72 | 48.26 |
| 20P | 48.26 | 50.80 |
| 21P | 50.80 | 53.34 |
| 22P | 53.34 | 55.88 |
| 23P | 55.88 | 58.42 |
| 24P | 58.42 | 60.96 |
| 25P | 60.96 | 63.50 |

Unit: mm

A2550HD-XP

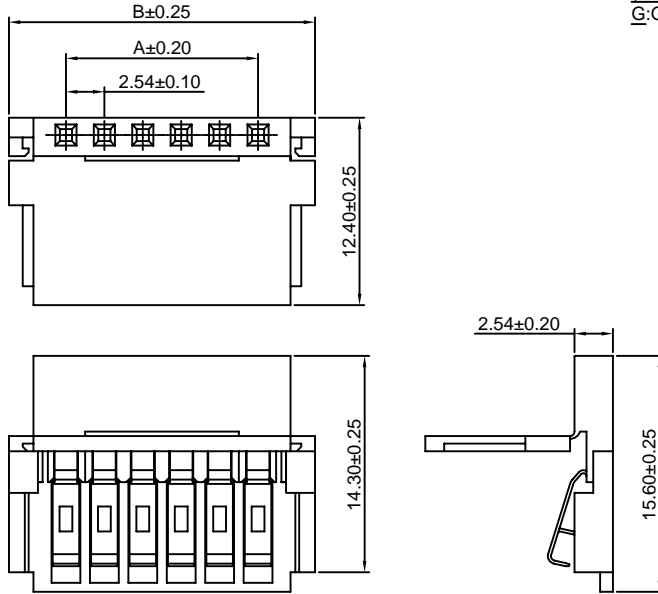
2.54mm Pitch Crimp Flex Housing

Reference Informations:

- *Material:Nylon 66,UL94V-0
- *Terminal Material:Phosphor Bronze/Tin over Nickel
- *Mates with CJT A2541 series Wafer
- *Used in FFC Wire
- *Color:Blue

Ordering Information:

- A2550HD-XP - *** - *
 1 2 3
- 1.Part No.
 - 2.Material:
 (blank):Nylon 66,UL94V-0
 GWT:Nylon 66,UL94V-0,GWT 750°C
 - 3.Finish:
 (blank):Tin over Nickel
 G:Gold over Nickel



Ordering Information & Dimensions:

| PART NO. | Dimensions | | PART NO. | Dimensions | |
|----------|------------|-------|----------|------------|-------|
| | A | B | | A | B |
| 2P | 2.54 | 10.08 | 20P | 48.26 | 55.80 |
| 3P | 5.08 | 12.62 | 21P | 50.80 | 58.34 |
| 4P | 7.62 | 15.16 | 22P | 53.34 | 60.88 |
| 5P | 10.16 | 17.70 | 23P | 55.88 | 63.42 |
| 6P | 12.70 | 20.24 | 24P | 58.42 | 65.96 |
| 7P | 15.24 | 22.78 | 25P | 60.96 | 68.50 |
| 8P | 17.78 | 25.32 | 26P | 63.50 | 71.04 |
| 9P | 20.32 | 27.86 | 27P | 66.04 | 73.58 |
| 10P | 22.86 | 30.40 | 28P | 68.58 | 76.12 |
| 11P | 25.40 | 32.94 | 29P | 71.12 | 78.66 |
| 12P | 27.94 | 35.48 | 30P | 73.66 | 81.20 |
| 13P | 30.48 | 38.02 | 31P | 76.20 | 83.74 |
| 14P | 33.02 | 40.56 | 32P | 78.74 | 86.28 |
| 15P | 35.56 | 43.10 | 33P | 81.28 | 88.82 |
| 16P | 38.10 | 45.64 | 34P | 83.82 | 91.36 |
| 17P | 40.64 | 48.18 | 35P | 86.36 | 93.90 |
| 18P | 43.18 | 50.72 | 36P | 88.90 | 96.44 |
| 19P | 45.72 | 53.26 | | | |

Unit: mm

A2550HDM-XP

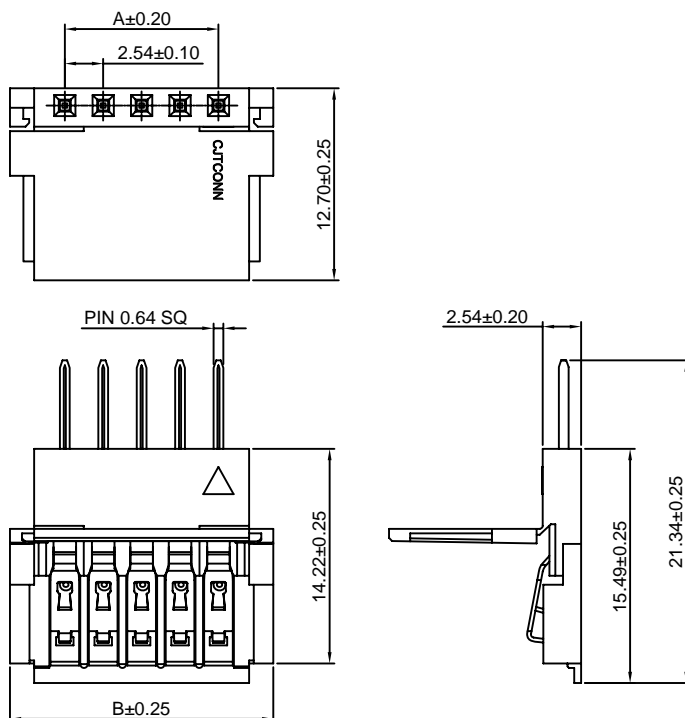
2.54mm Pitch Crimp Flex Housing

Reference Informations:

- *Material:Nylon 66,UL94V-0
- *Terminal Material:Phosphor Bronze/Tin over Nickel
- *Used in FFC Wire
- *Color:Blue

Ordering Information:

- A2550HDM-XP - *** - *
 1 2 3
- 1.Part No.
 - 2.Material:
 (blank):Nylon 66,UL94V-0
 GWT:Nylon 66,UL94V-0,GWT 750°C
 - 3.Finish:
 (blank):Tin over Nickel
 G:Gold over Nickel



Ordering Information & Dimensions:

| PART NO. | Dimensions | | PART NO. | Dimensions | |
|----------|------------|-------|----------|------------|-------|
| | A | B | | A | B |
| 2P | 2.54 | 9.91 | 20P | 48.26 | 55.63 |
| 3P | 5.08 | 12.45 | 21P | 50.80 | 58.17 |
| 4P | 7.62 | 14.99 | 22P | 53.34 | 60.71 |
| 5P | 10.16 | 17.53 | 23P | 55.88 | 63.25 |
| 6P | 12.70 | 20.07 | 24P | 58.42 | 65.79 |
| 7P | 15.24 | 22.61 | 25P | 60.96 | 68.33 |
| 8P | 17.78 | 25.15 | 26P | 63.50 | 70.87 |
| 9P | 20.32 | 27.69 | 27P | 66.04 | 73.41 |
| 10P | 22.86 | 30.23 | 28P | 68.58 | 75.95 |
| 11P | 25.40 | 32.77 | 29P | 71.12 | 78.49 |
| 12P | 27.94 | 35.31 | 30P | 73.66 | 81.03 |
| 13P | 30.48 | 37.85 | 31P | 76.20 | 83.57 |
| 14P | 33.02 | 40.39 | 32P | 78.74 | 86.11 |
| 15P | 35.56 | 42.93 | 33P | 81.28 | 88.65 |
| 16P | 38.10 | 45.47 | 34P | 83.82 | 91.19 |
| 17P | 40.64 | 48.01 | 35P | 86.36 | 93.73 |
| 18P | 43.18 | 50.55 | 36P | 88.90 | 96.27 |
| 19P | 45.72 | 53.09 | | | |

Unit: mm

A2550HE-XP

2.54mm Pitch Crimp Flex Housing

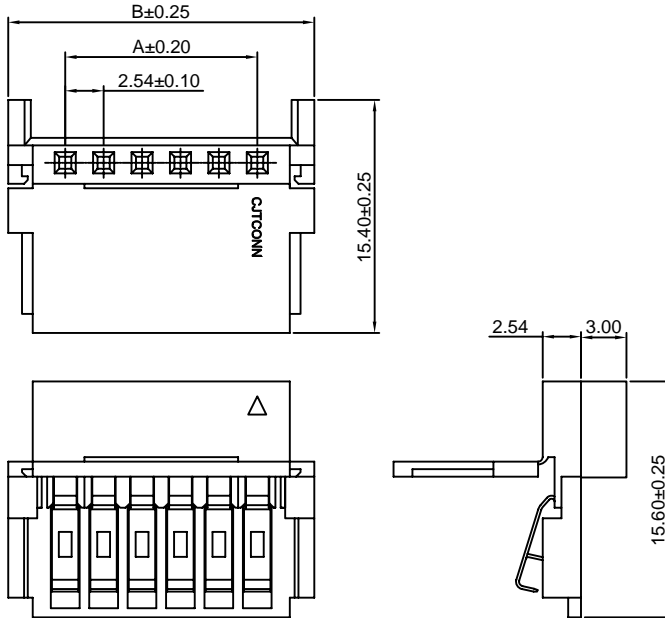
Reference Informations:

- *Material:Nylon 66,UL94V-0
- *Terminal Material:Phosphor Bronze/Tin over Nickel
- *Mates with CJT A2541WV,WR-XP, A2549WVB,WRB-XP series Wafer
- *Used in FFC Wire
- *Color:Blue

Ordering Information:

A2550HE-XP - *** - *
1 2 3

- 1.Part No.
- 2.Material:
(blank):Nylon 66,UL94V-0
GWT:Nylon 66,UL94V-0,GWT 750°C
- 3.Finish:
(blank):Tin over Nickel
G:Gold over Nickel



Ordering Information & Dimensions:

| PART NO. | Dimensions | | PART NO. | Dimensions | |
|----------|------------|-------|----------|------------|-------|
| | A | B | | A | B |
| 2P | 2.54 | 10.08 | 19P | 45.72 | 53.26 |
| 3P | 5.08 | 12.62 | 20P | 48.26 | 55.80 |
| 4P | 7.62 | 15.16 | 21P | 50.80 | 58.34 |
| 5P | 10.16 | 17.70 | 22P | 53.34 | 60.88 |
| 6P | 12.70 | 20.24 | 23P | 55.88 | 63.42 |
| 7P | 15.24 | 22.78 | 24P | 58.42 | 65.96 |
| 8P | 17.78 | 25.32 | 25P | 60.96 | 68.50 |
| 9P | 20.32 | 27.86 | 26P | 63.50 | 71.04 |
| 10P | 22.86 | 30.40 | 27P | 66.04 | 73.58 |
| 11P | 25.40 | 32.94 | 28P | 68.58 | 76.12 |
| 12P | 27.94 | 35.48 | 29P | 71.12 | 78.66 |
| 13P | 30.48 | 38.02 | 30P | 73.66 | 81.20 |
| 14P | 33.02 | 40.56 | 31P | 76.20 | 83.74 |
| 15P | 35.56 | 43.10 | 32P | 78.74 | 86.28 |
| 16P | 38.10 | 45.64 | 33P | 81.28 | 88.82 |
| 17P | 40.64 | 48.18 | 34P | 83.82 | 91.36 |
| 18P | 43.18 | 50.72 | | | |

Unit: mm

A2550HF-XP

2.54mm Pitch Crimp Flex Housing

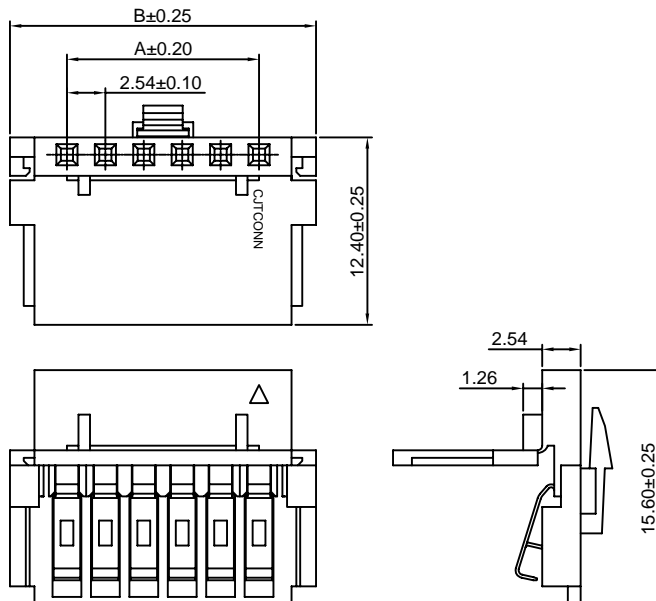
Reference Informations:

- *Material:Nylon 66,UL94V-0
- *Terminal Material:Phosphor Bronze/Tin over Nickel
- *Mates with CJT A2547HM-XP, A2550HM-XP series Housing or A2547WVA,WRA-XP series Wafer
- *Used in FFC Wire
- *Color:Blue

Ordering Information:

A2550HF-XP - *** - *
1 2 3

- 1.Part No.
- 2.Material:
(blank):Nylon 66,UL94V-0
GWT:Nylon 66,UL94V-0,GWT 750°C
- 3.Finish:
(blank):Tin over Nickel
G:Gold over Nickel



Ordering Information & Dimensions:

| PART NO. | Dimensions | | PART NO. | Dimensions | |
|----------|------------|-------|----------|------------|-------|
| | A | B | | A | B |
| 6P | 12.70 | 20.24 | 21P | 50.80 | 58.34 |
| 7P | 15.24 | 22.78 | 22P | 53.34 | 60.88 |
| 8P | 17.78 | 25.32 | 23P | 55.88 | 63.42 |
| 9P | 20.32 | 27.86 | 24P | 58.42 | 65.96 |
| 10P | 22.86 | 30.40 | 25P | 60.96 | 68.50 |
| 11P | 25.40 | 32.94 | 26P | 63.50 | 71.04 |
| 12P | 27.94 | 35.48 | 27P | 66.04 | 73.58 |
| 13P | 30.48 | 38.02 | 28P | 68.58 | 76.12 |
| 14P | 33.02 | 40.56 | 29P | 71.12 | 78.66 |
| 15P | 35.56 | 43.10 | 30P | 73.66 | 81.20 |
| 16P | 38.10 | 45.64 | 31P | 76.20 | 83.74 |
| 17P | 40.64 | 48.18 | 32P | 78.74 | 86.28 |
| 18P | 43.18 | 50.72 | 33P | 81.28 | 88.82 |
| 19P | 45.72 | 53.26 | 34P | 83.82 | 91.36 |
| 20P | 48.26 | 55.80 | | | |

Unit: mm

A2550HG-XP

2.54mm Pitch Crimp Flex Housing

Reference Informations:

- *Material: Nylon 66, UL94V-0
- *Terminal Material: Phosphor Bronze/Tin over Nickel
- *Mates with CJT A2547HM-XP, A2550HM, HMA-XP series Housing or A2547WVA, WRA-XP series Wafer
- *Used in FFC Wire
- *Color: Blue

Ordering Information:

A2550HG-XP - *** - *
 1 2 3

1. Part No.
2. Material:
 (blank): Nylon 66, UL94V-0
 GWT: Nylon 66, UL94V-0, GWT 750 °C
3. Finish:
 (blank): Tin over Nickel
 G: Gold over Nickel



Ordering Information & Dimensions:

| PART NO. | Dimensions | | PART NO. | Dimensions | |
|----------|------------|-------|----------|------------|-------|
| | A | B | | A | B |
| 6P | 12.70 | 20.24 | 21P | 50.80 | 58.34 |
| 7P | 15.24 | 22.78 | 22P | 53.34 | 60.88 |
| 8P | 17.78 | 25.32 | 23P | 55.88 | 63.42 |
| 9P | 20.32 | 27.86 | 24P | 58.42 | 65.96 |
| 10P | 22.86 | 30.40 | 25P | 60.96 | 68.50 |
| 11P | 25.40 | 32.94 | 26P | 63.50 | 71.04 |
| 12P | 27.94 | 35.48 | 27P | 66.04 | 73.58 |
| 13P | 30.48 | 38.02 | 28P | 68.58 | 76.12 |
| 14P | 33.02 | 40.56 | 29P | 71.12 | 78.66 |
| 15P | 35.56 | 43.10 | 30P | 73.66 | 81.20 |
| 16P | 38.10 | 45.64 | 31P | 76.20 | 83.74 |
| 17P | 40.64 | 48.18 | 32P | 78.74 | 86.28 |
| 18P | 43.18 | 50.72 | 33P | 81.28 | 88.82 |
| 19P | 45.72 | 53.26 | 34P | 83.82 | 91.36 |
| 20P | 48.26 | 55.80 | | | |

Unit: mm

A2550HK-XP

2.54mm Pitch Crimp Flex Housing

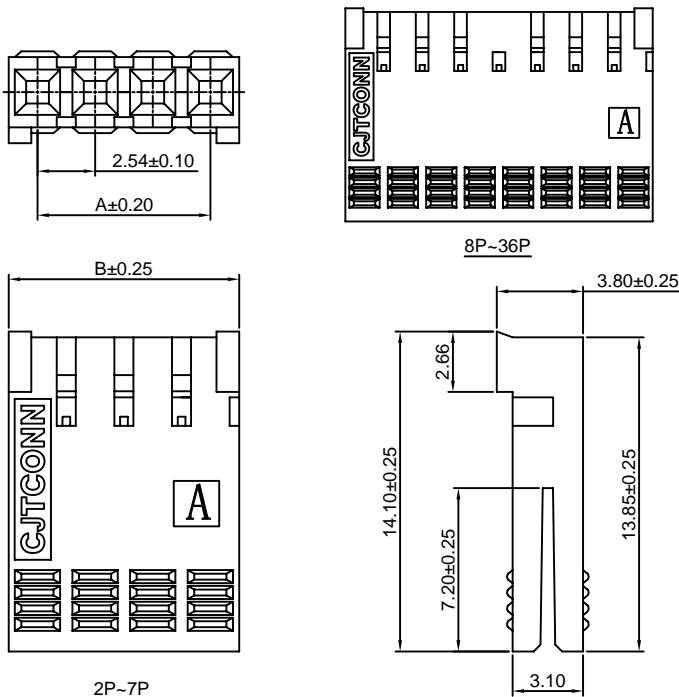
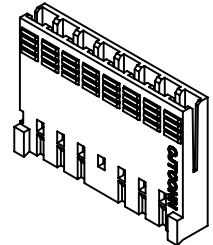
Reference Informations:

- *Material: PBT30%GF, UL94V-0
- *Suitable CJT A2550 series Terminal (A2550-T-K)
- *Color: Blue

Ordering Information:

A2550HK-XP - ***
 1 2

1. Part No.
2. Material:
 (blank): PBT30%GF, UL94V-0
 GWT: PBT, UL94V-0, GWT 750 °C



Ordering Information & Dimensions:

| PART NO. | Dimensions | | PART NO. | Dimensions | |
|----------|------------|-------|----------|------------|-------|
| | A | B | | A | B |
| 2P | 2.54 | 5.08 | 20P | 48.26 | 50.80 |
| 3P | 5.08 | 7.62 | 21P | 50.80 | 53.34 |
| 4P | 7.62 | 10.16 | 22P | 53.34 | 55.88 |
| 5P | 10.16 | 12.70 | 23P | 55.88 | 58.42 |
| 6P | 12.70 | 15.24 | 24P | 58.42 | 60.96 |
| 7P | 15.24 | 17.78 | 25P | 60.96 | 63.50 |
| 8P | 17.78 | 20.32 | 26P | 63.50 | 66.04 |
| 9P | 20.32 | 22.86 | 27P | 66.04 | 68.58 |
| 10P | 22.86 | 25.40 | 28P | 68.58 | 71.12 |
| 11P | 25.40 | 27.94 | 29P | 71.12 | 73.66 |
| 12P | 27.94 | 30.48 | 30P | 73.66 | 76.20 |
| 13P | 30.48 | 33.02 | 31P | 76.20 | 78.74 |
| 14P | 33.02 | 35.56 | 32P | 78.74 | 81.28 |
| 15P | 35.56 | 38.10 | 33P | 81.28 | 83.82 |
| 16P | 38.10 | 40.64 | 34P | 83.82 | 86.36 |
| 17P | 40.64 | 43.18 | 35P | 86.36 | 88.90 |
| 18P | 43.18 | 45.72 | 36P | 88.90 | 91.44 |
| 19P | 45.72 | 48.26 | | | |

Unit: mm

A2550HL-XP

2.54mm Pitch Crimp Flex Housing

Reference Informations:

- *Material: PBT30%GF, UL94V-0
- *Suitable CJT A2550 series Terminal (A2550-T(-H), A2550-T(-H)-CR, A2550-T-A, A2550-T-C, A2550M-T)
- *Mates with CJT A2541 series Wafer
- *Color: Black

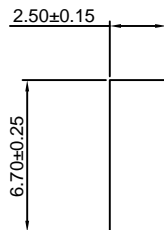
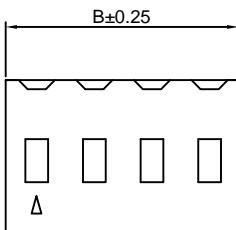


Ordering Information:

- A2550HL-XP - ***
 1 Part No.
 2 Material:
 (blank): PBT30%GF, UL94V-0
 GWT: PBT, UL94V-0, GWT 750°C

Ordering Information & Dimensions:

| PART NO. | Dimensions | | PART NO. | Dimensions | |
|----------|------------|-------|----------|------------|-------|
| | A | B | | A | B |
| 2P | 2.54 | 5.08 | 20P | 48.26 | 50.80 |
| 3P | 5.08 | 7.62 | 21P | 50.80 | 53.34 |
| 4P | 7.62 | 10.16 | 22P | 53.34 | 55.88 |
| 5P | 10.16 | 12.70 | 23P | 55.88 | 58.42 |
| 6P | 12.70 | 15.24 | 24P | 58.42 | 60.96 |
| 7P | 15.24 | 17.78 | 25P | 60.96 | 63.50 |
| 8P | 17.78 | 20.32 | 26P | 63.50 | 66.04 |
| 9P | 20.32 | 22.86 | 27P | 66.04 | 68.58 |
| 10P | 22.86 | 25.40 | 28P | 68.58 | 71.12 |
| 11P | 25.40 | 27.94 | 29P | 71.12 | 73.66 |
| 12P | 27.94 | 30.48 | 30P | 73.66 | 76.20 |
| 13P | 30.48 | 33.02 | 31P | 76.20 | 78.74 |
| 14P | 33.02 | 35.56 | 32P | 78.74 | 81.28 |
| 15P | 35.56 | 38.10 | 33P | 81.28 | 83.82 |
| 16P | 38.10 | 40.64 | 34P | 83.82 | 86.36 |
| 17P | 40.64 | 43.18 | 35P | 86.36 | 88.90 |
| 18P | 43.18 | 45.72 | 36P | 88.90 | 91.44 |
| 19P | 45.72 | 48.26 | | | |



Unit: mm

A2550H-XP-M

2.54mm Pitch Housing With Lock

Reference Informations:

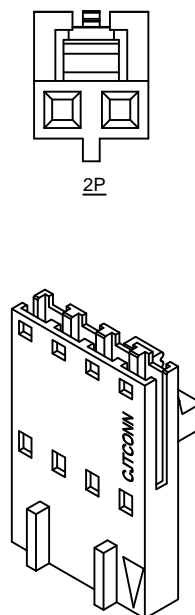
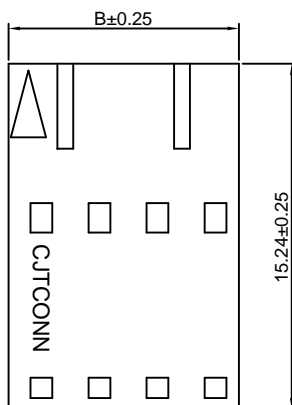
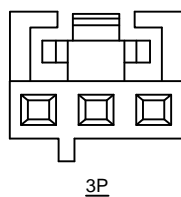
- *Material: PBT30%GF, UL94V-0
- *Suitable CJT A2550-T-E series Terminal
- *Mates with CJT A2547HM-XP A2550HM-XP series Housing or A2547 series single row Wafer
- *Color: Black

Ordering Information:

- A2550H-XP-M - ***
 1 Part No.
 2 Material:
 (blank): PBT30%GF, UL94V-0
 GWT: PBT, UL94V-0, GWT 750°C

Ordering Information & Dimensions:

| PART NO. | Dimensions | |
|----------|------------|-------|
| | A | B |
| 2P | 2.54 | 5.08 |
| 3P | 5.08 | 7.62 |
| 4P | 7.62 | 10.16 |
| 5P | 10.16 | 12.70 |
| 6P | 12.70 | 15.24 |
| 7P | 15.24 | 17.78 |
| 8P | 17.78 | 20.32 |
| 9P | 20.32 | 22.86 |
| 10P | 22.86 | 25.40 |
| 11P | 25.40 | 27.94 |
| 12P | 27.94 | 30.48 |
| 13P | 30.48 | 33.02 |
| 14P | 33.02 | 35.56 |
| 15P | 35.56 | 38.10 |
| 16P | 38.10 | 40.64 |
| 17P | 40.64 | 43.18 |
| 18P | 43.18 | 45.72 |
| 19P | 45.72 | 48.26 |
| 20P | 48.26 | 50.80 |
| 21P | 50.80 | 53.34 |
| 22P | 53.34 | 55.88 |
| 23P | 55.88 | 58.42 |
| 24P | 58.42 | 60.96 |
| 25P | 60.96 | 63.50 |



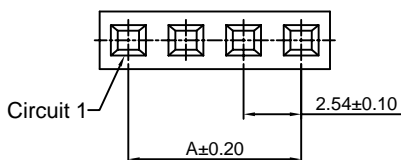
Unit: mm

A2550H-XP-M1

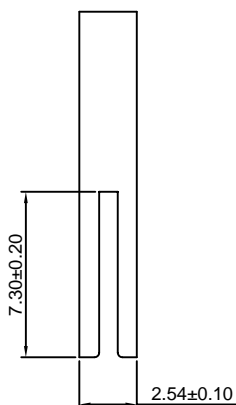
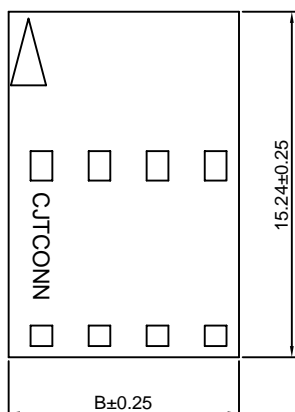
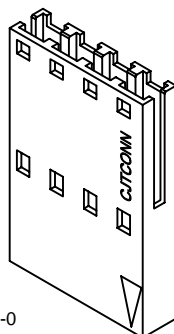
2.54mm Pitch Housing

Reference Informations:

- *Material: PBT30%GF, UL94V-0
- *Suitable CJT A2550-T-E, A2550M-T-D series Terminal
- *Mates with CJT A2547WV, WR-XP, A2547WVA, WRA-XP series single row Wafer
- *Color: Black



Ordering Information:
A2550H-XP-M1 - ***
 1 2
 1. Part No.
 2. Material:
 (blank): PBT30%GF, UL94V-0
 GWT: PBT, UL94V-0, GWT 750°C



Ordering Information & Dimensions:

| PART NO. | Dimensions | |
|----------|------------|-------|
| | A | B |
| 2P | 2.54 | 5.08 |
| 3P | 5.08 | 7.62 |
| 4P | 7.62 | 10.16 |
| 5P | 10.16 | 12.70 |
| 6P | 12.70 | 15.24 |
| 7P | 15.24 | 17.78 |
| 8P | 17.78 | 20.32 |
| 9P | 20.32 | 22.86 |
| 10P | 22.86 | 25.40 |
| 11P | 25.40 | 27.94 |
| 12P | 27.94 | 30.48 |
| 13P | 30.48 | 33.02 |
| 14P | 33.02 | 35.56 |
| 15P | 35.56 | 38.10 |
| 16P | 38.10 | 40.64 |
| 17P | 40.64 | 43.18 |
| 18P | 43.18 | 45.72 |
| 19P | 45.72 | 48.26 |
| 20P | 48.26 | 50.80 |
| 21P | 50.80 | 53.34 |
| 22P | 53.34 | 55.88 |
| 23P | 55.88 | 58.42 |
| 24P | 58.42 | 60.96 |
| 25P | 60.96 | 63.50 |

Unit: mm

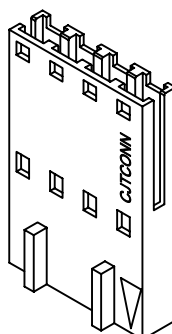
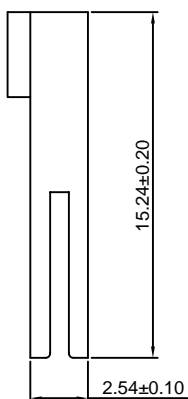
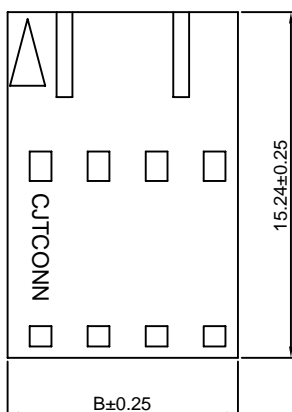
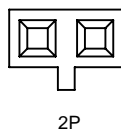
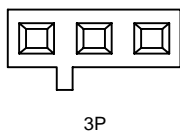
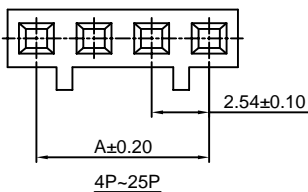
A2550H-XP-M2

2.54mm Pitch Housing

Reference Informations:

- *Material: PBT30%GF, UL94V-0
- *Suitable CJT A2550-T-E series Terminal
- *Mates with CJT A2547WV, WR-XP, A2547WVA, WRA-XP series single row Wafer
- *Color: Black

Ordering Information:
A2550H-XP-M2 - ***
 1 2
 1. Part No.
 2. Material:
 (blank): PBT30%GF, UL94V-0
 GWT: PBT, UL94V-0, GWT 750°C



Ordering Information & Dimensions:

| PART NO. | Dimensions | |
|----------|------------|-------|
| | A | B |
| 2P | 2.54 | 5.08 |
| 3P | 5.08 | 7.62 |
| 4P | 7.62 | 10.16 |
| 5P | 10.16 | 12.70 |
| 6P | 12.70 | 15.24 |
| 7P | 15.24 | 17.78 |
| 8P | 17.78 | 20.32 |
| 9P | 20.32 | 22.86 |
| 10P | 22.86 | 25.40 |
| 11P | 25.40 | 27.94 |
| 12P | 27.94 | 30.48 |
| 13P | 30.48 | 33.02 |
| 14P | 33.02 | 35.56 |
| 15P | 35.56 | 38.10 |
| 16P | 38.10 | 40.64 |
| 17P | 40.64 | 43.18 |
| 18P | 43.18 | 45.72 |
| 19P | 45.72 | 48.26 |
| 20P | 48.26 | 50.80 |
| 21P | 50.80 | 53.34 |
| 22P | 53.34 | 55.88 |
| 23P | 55.88 | 58.42 |
| 24P | 58.42 | 60.96 |
| 25P | 60.96 | 63.50 |

Unit: mm

A2550H-XP-M3

2.54mm Pitch Housing

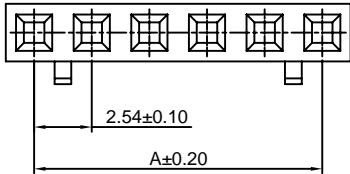
Reference Informations:

- *Material:PBT30%GF , UL94V-0
- *Suitable CJT A2550-T-E,A2550M-T-D series Terminal
- *Color:Black

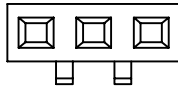
Ordering Information:

A2550H-XP-M3 - ***
 1 2

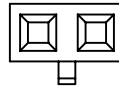
1.Part No.
 2.Material:
 (blank):PBT30%GF,UL94V-0
 GWT:PBT,UL94V-0,GWT 750°C



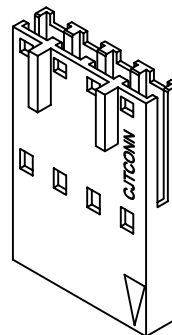
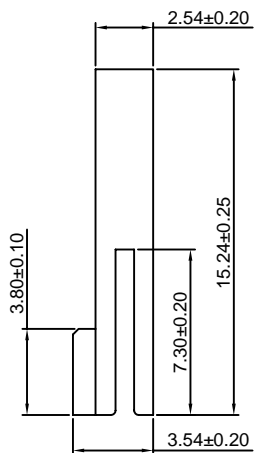
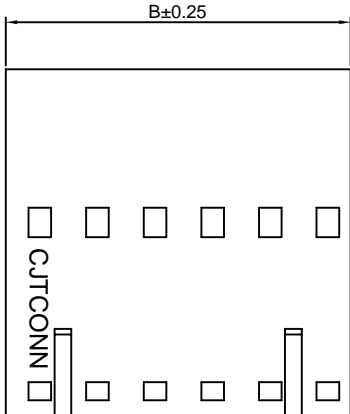
4P~25P



3P



2P



Ordering Information & Dimensions:

| PART NO. | Dimensions | |
|----------|------------|-------|
| | A | B |
| 2P | 2.54 | 5.08 |
| 3P | 5.08 | 7.62 |
| 4P | 7.62 | 10.16 |
| 5P | 10.16 | 12.70 |
| 6P | 12.70 | 15.24 |
| 7P | 15.24 | 17.78 |
| 8P | 17.78 | 20.32 |
| 9P | 20.32 | 22.86 |
| 10P | 22.86 | 25.40 |
| 11P | 25.40 | 27.94 |
| 12P | 27.94 | 30.48 |
| 13P | 30.48 | 33.02 |
| 14P | 33.02 | 35.56 |
| 15P | 35.56 | 38.10 |
| 16P | 38.10 | 40.64 |
| 17P | 40.64 | 43.18 |
| 18P | 43.18 | 45.72 |
| 19P | 45.72 | 48.26 |
| 20P | 48.26 | 50.80 |
| 21P | 50.80 | 53.34 |
| 22P | 53.34 | 55.88 |
| 23P | 55.88 | 58.42 |
| 24P | 58.42 | 60.96 |
| 25P | 60.96 | 63.50 |

Unit: mm

A2550H-XP-MH

2.54mm Pitch Housing With Lock

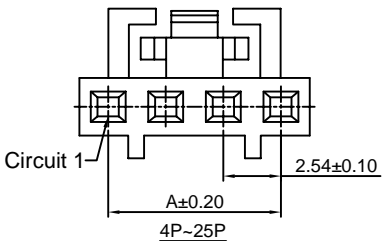
Reference Informations:

- *Material:PBT30%GF , UL94V-0
- *Suitable CJT A2550-T-E series Terminal
- *Mates with CJT A2547HM-XP A2550HM-XP series Housing or A2547 series single row Wafer
- *Color:Black

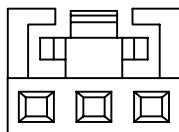
Ordering Information:

A2550H-XP-MH - ***
 1 2

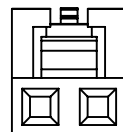
1.Part No.
 2.Material:
 (blank):PBT30%GF,UL94V-0
 GWT:PBT,UL94V-0,GWT 750°C



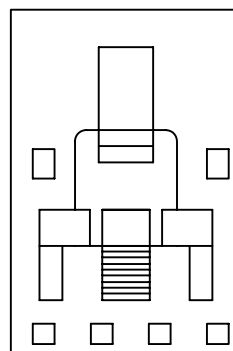
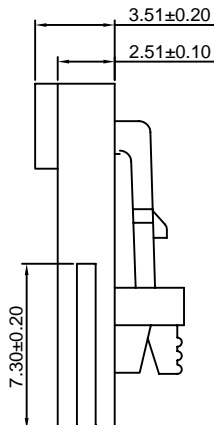
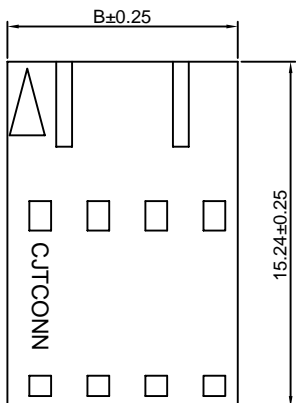
4P~25P



3P



2P



Ordering Information & Dimensions:

| PART NO. | Dimensions | |
|----------|------------|-------|
| | A | B |
| 2P | 2.54 | 5.08 |
| 3P | 5.08 | 7.62 |
| 4P | 7.62 | 10.16 |
| 5P | 10.16 | 12.70 |
| 6P | 12.70 | 15.24 |
| 7P | 15.24 | 17.78 |
| 8P | 17.78 | 20.32 |
| 9P | 20.32 | 22.86 |
| 10P | 22.86 | 25.40 |
| 11P | 25.40 | 27.94 |
| 12P | 27.94 | 30.48 |
| 13P | 30.48 | 33.02 |
| 14P | 33.02 | 35.56 |
| 15P | 35.56 | 38.10 |
| 16P | 38.10 | 40.64 |
| 17P | 40.64 | 43.18 |
| 18P | 43.18 | 45.72 |
| 19P | 45.72 | 48.26 |
| 20P | 48.26 | 50.80 |
| 21P | 50.80 | 53.34 |
| 22P | 53.34 | 55.88 |
| 23P | 55.88 | 58.42 |
| 24P | 58.42 | 60.96 |
| 25P | 60.96 | 63.50 |

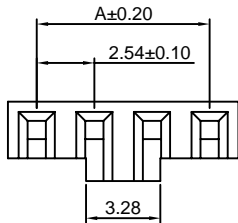
Unit: mm

A2550HH-N-XP

2.54mm Pitch Crimp Flex Housing

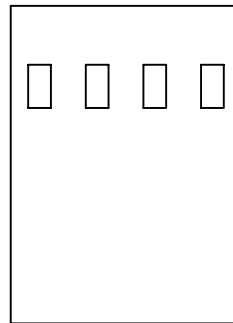
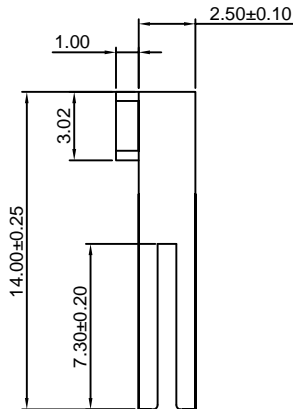
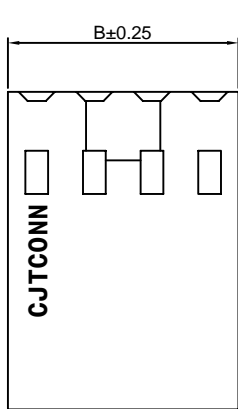
Reference Informations:

- *Material:PBT30%GF,UL94V-0
- *Suitable CJT A2550 series Terminal (A2550-T(-H), A2550-T(-H)-CR, A2550-T-A, A2550-T-C, A2550M-T)
- *Mates with CJT A2541 series Wafer
- *Color:Black



Ordering Information:
A2550HH-N-XP - ***
1 2

- 1.Part No.
- 2.Material:
(blank):PBT30%GF,UL94V-0
GWT:PBT,UL94V-0,GWT 750°C



Ordering Information & Dimensions:

| PART NO. | Dimensions | |
|----------|------------|-------|
| | A | B |
| 2P | 2.54 | 5.08 |
| 3P | 5.08 | 7.62 |
| 4P | 7.62 | 10.16 |
| 5P | 10.16 | 12.70 |
| 6P | 12.70 | 15.24 |
| 7P | 15.24 | 17.78 |
| 8P | 17.78 | 20.32 |
| 9P | 20.32 | 22.86 |
| 10P | 22.86 | 25.40 |
| 11P | 25.40 | 27.94 |
| 12P | 27.94 | 30.48 |
| 13P | 30.48 | 33.02 |
| 14P | 33.02 | 35.56 |
| 15P | 35.56 | 38.10 |
| 16P | 38.10 | 40.64 |
| 17P | 40.64 | 43.18 |
| 18P | 43.18 | 45.72 |
| 19P | 45.72 | 48.26 |
| 20P | 48.26 | 50.80 |
| 21P | 50.80 | 53.34 |
| 22P | 53.34 | 55.88 |
| 23P | 55.88 | 58.42 |
| 24P | 58.42 | 60.96 |
| 25P | 60.96 | 63.50 |

Unit: mm

A2550HM-XP

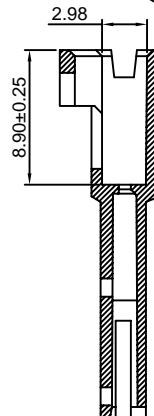
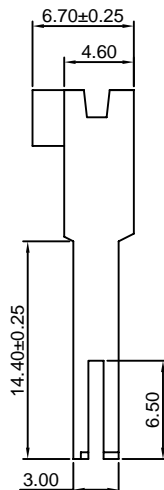
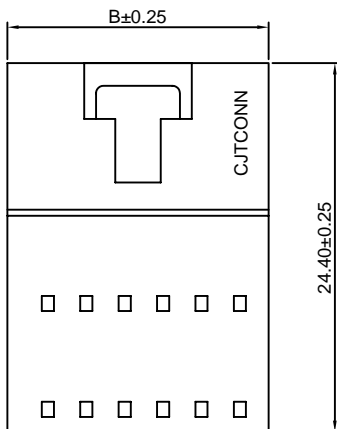
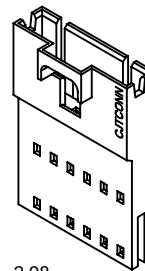
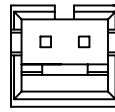
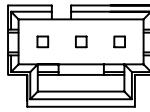
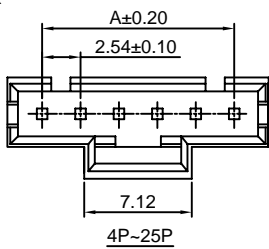
2.54mm Pitch Crimp Flex Housing

Reference Informations:

- *Material:PBT30%GF,UL94V-0
- *Suitable CJT A2550M-T-D series Terminal
- *Mates with CJT A2550 series Housing (A2550H-XP-A, A2550H-XP-A1,A2550H-XP-A2,A2550H-XP-H,A2547H,HA-XP)
- *Color:Black

Ordering Information:
A2550HM-XP - ***
1 2

- 1.Part No.
- 2.Material:
(blank):PBT30%GF,UL94V-0
GWT:PBT,UL94V-0,GWT 750°C



Ordering Information & Dimensions:

| PART NO. | Dimensions | |
|----------|------------|-------|
| | A | B |
| 2P | 2.54 | 7.12 |
| 3P | 5.08 | 9.66 |
| 4P | 7.62 | 12.20 |
| 5P | 10.16 | 14.74 |
| 6P | 12.70 | 17.28 |
| 7P | 15.24 | 19.82 |
| 8P | 17.78 | 22.36 |
| 9P | 20.32 | 24.90 |
| 10P | 22.86 | 27.44 |
| 11P | 25.40 | 29.98 |
| 12P | 27.94 | 32.52 |
| 13P | 30.48 | 35.06 |
| 14P | 33.02 | 37.60 |
| 15P | 35.56 | 40.14 |
| 16P | 38.10 | 42.68 |
| 17P | 40.64 | 45.22 |
| 18P | 43.18 | 47.76 |
| 19P | 45.72 | 50.30 |
| 20P | 48.26 | 52.84 |
| 21P | 50.80 | 55.38 |
| 22P | 53.34 | 57.92 |
| 23P | 55.88 | 60.46 |
| 24P | 58.42 | 63.00 |
| 25P | 60.96 | 65.54 |

Unit: mm

A2550HMA-XP

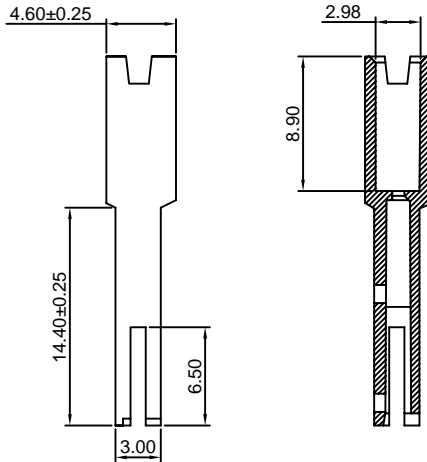
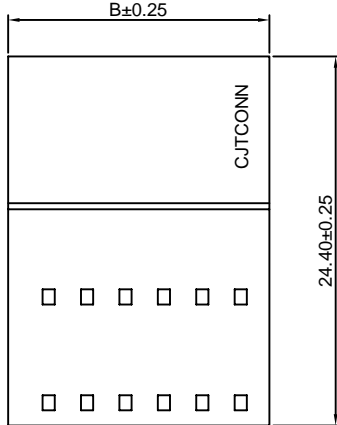
2.54mm Pitch Crimp Flex Housing

Reference Informations:

- *Material: PBT30%GF, UL94V-0
- *Suitable CJT A2550M-T-D series Terminal
- *Mates with CJT A2550H-XP-B, A2547H-XP-3 series Housing
- *Color: Black

Ordering Information:

- A2550HMA-XP - ***
 1 2
1. Part No.
 2. Material:
 (blank): PBT30%GF, UL94V-0
 GWT: PBT, UL94V-0, GWT 750°C



Ordering Information & Dimensions:

| PART NO. | Dimensions | |
|----------|------------|-------|
| | A | B |
| 2P | 2.54 | 7.12 |
| 3P | 5.08 | 9.66 |
| 4P | 7.62 | 12.20 |
| 5P | 10.16 | 14.74 |
| 6P | 12.70 | 17.28 |
| 7P | 15.24 | 19.82 |
| 8P | 17.78 | 22.36 |
| 9P | 20.32 | 24.90 |
| 10P | 22.86 | 27.44 |
| 11P | 25.40 | 29.98 |
| 12P | 27.94 | 32.52 |
| 13P | 30.48 | 35.06 |
| 14P | 33.02 | 37.60 |
| 15P | 35.56 | 40.14 |
| 16P | 38.10 | 42.68 |
| 17P | 40.64 | 45.22 |
| 18P | 43.18 | 47.76 |
| 19P | 45.72 | 50.30 |
| 20P | 48.26 | 52.84 |
| 21P | 50.80 | 55.38 |
| 22P | 53.34 | 57.92 |
| 23P | 55.88 | 60.46 |
| 24P | 58.42 | 63.00 |
| 25P | 60.96 | 65.54 |

Unit: mm

A2550H-2xXP

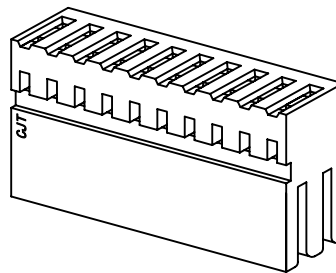
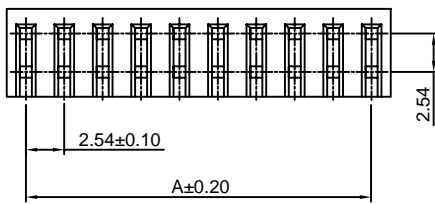
2.54mm Pitch Crimp Flex Housing

Reference Informations:

- *Material: PBT30%GF, UL94V-0
- *Suitable CJT A2550 series Terminal (A2550-T(-H), A2550-T(-H)-CR, A2550-T-A, A2550-T-C, A2550M-T)
- *Mates with CJT A2541 series Wafer
- *Color: Black

Ordering Information:

- A2550H-2xXP - ***
 1 2
1. Part No.
 2. Material:
 (blank): PBT30%GF, UL94V-0
 GWT: PBT, UL94V-0, GWT 750°C



Ordering Information & Dimensions:

| PART NO. | Dimensions | |
|----------|------------|-------|
| | A | B |
| 2x2P | 2.54 | 5.08 |
| 2x3P | 5.08 | 7.62 |
| 2x4P | 7.62 | 10.16 |
| 2x5P | 10.16 | 12.70 |
| 2x6P | 12.70 | 15.24 |
| 2x7P | 15.24 | 17.78 |
| 2x8P | 17.78 | 20.32 |
| 2x9P | 20.32 | 22.86 |
| 2x10P | 22.86 | 25.40 |
| 2x11P | 25.40 | 27.94 |
| 2x12P | 27.94 | 30.48 |
| 2x13P | 30.48 | 33.02 |
| 2x14P | 33.02 | 35.56 |
| 2x15P | 35.56 | 38.10 |
| 2x16P | 38.10 | 40.64 |
| 2x17P | 40.64 | 43.18 |
| 2x18P | 43.18 | 45.72 |
| 2x19P | 45.72 | 48.26 |
| 2x20P | 48.26 | 50.80 |
| 2x21P | 50.80 | 53.34 |
| 2x22P | 53.34 | 55.88 |
| 2x23P | 55.88 | 58.42 |
| 2x24P | 58.42 | 60.96 |
| 2x25P | 60.96 | 63.50 |

Unit: mm

A2550HA-2xXP

2.54mm Pitch Crimp Flex Housing

Reference Informations:

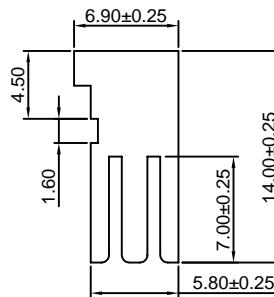
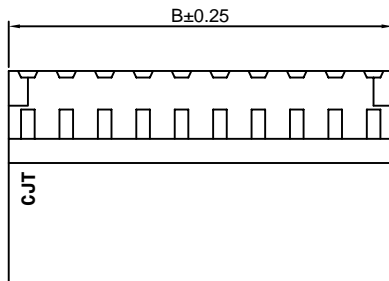
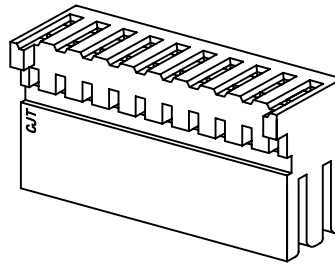
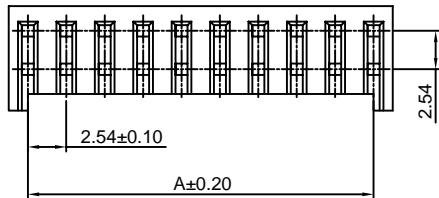
- *Material: PBT30%GF, UL94V-0
- *Suitable CJT A2550 series Terminal (A2550-T(-H), A2550-T(-H)-CR, A2550-T-A, A2550-T-C)
- *Mates with CJT A2549WVB, WRB-2xXP series Dual Row Wafer
- *Color: Black

Ordering Information:

- A2550HA-2xXP - ***
 1 2
 1. Part No.
 2. Material:
 (blank): PBT30%GF, UL94V-0
 GWT: PBT, UL94V-0, GWT 750 °C

Ordering Information & Dimensions:

| PART NO. | Dimensions | |
|----------|------------|-------|
| | A | B |
| 2x2P | 2.54 | 5.08 |
| 2x3P | 5.08 | 7.62 |
| 2x4P | 7.62 | 10.16 |
| 2x5P | 10.16 | 12.70 |
| 2x6P | 12.70 | 15.24 |
| 2x7P | 15.24 | 17.78 |
| 2x8P | 17.78 | 20.32 |
| 2x9P | 20.32 | 22.86 |
| 2x10P | 22.86 | 25.40 |
| 2x11P | 25.40 | 27.94 |
| 2x12P | 27.94 | 30.48 |
| 2x13P | 30.48 | 33.02 |
| 2x14P | 33.02 | 35.56 |
| 2x15P | 35.56 | 38.10 |
| 2x16P | 38.10 | 40.64 |
| 2x17P | 40.64 | 43.18 |
| 2x18P | 43.18 | 45.72 |
| 2x19P | 45.72 | 48.26 |
| 2x20P | 48.26 | 50.80 |
| 2x21P | 50.80 | 53.34 |
| 2x22P | 53.34 | 55.88 |
| 2x23P | 55.88 | 58.42 |
| 2x24P | 58.42 | 60.96 |
| 2x25P | 60.96 | 63.50 |



Unit: mm

A2550H-N-2xXP

2.54mm Pitch Crimp Flex Housing

Reference Informations:

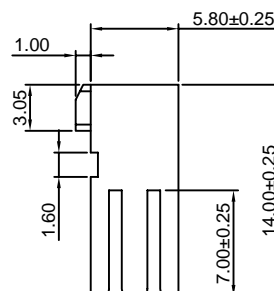
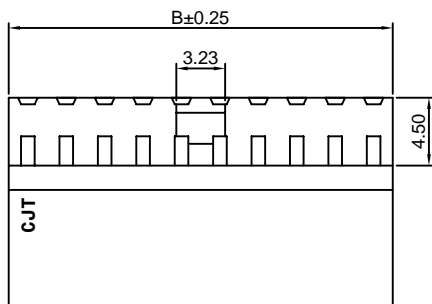
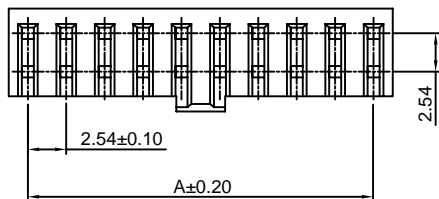
- *Material: PBT30%GF, UL94V-0
- *Suitable CJT A2550 series Terminal (A2550-T(-H), A2550-T(-H)-CR, A2550-T-A, A2550-T-C, A2550M-T)
- *Mates with CJT A2541 series Wafer or A2547WV, WR-2xXP series Wafer
- *Color: Black

Ordering Information:

- A2550H-N-2xXP - ***
 1 2
 1. Part No.
 2. Material:
 (blank): PBT30%GF, UL94V-0
 GWT: PBT, UL94V-0, GWT 750 °C

Ordering Information & Dimensions:

| PART NO. | Dimensions | |
|----------|------------|-------|
| | A | B |
| 2x2P | 2.54 | 5.08 |
| 2x3P | 5.08 | 7.62 |
| 2x4P | 7.62 | 10.16 |
| 2x5P | 10.16 | 12.70 |
| 2x6P | 12.70 | 15.24 |
| 2x7P | 15.24 | 17.78 |
| 2x8P | 17.78 | 20.32 |
| 2x9P | 20.32 | 22.86 |
| 2x10P | 22.86 | 25.40 |
| 2x11P | 25.40 | 27.94 |
| 2x12P | 27.94 | 30.48 |
| 2x13P | 30.48 | 33.02 |
| 2x14P | 33.02 | 35.56 |
| 2x15P | 35.56 | 38.10 |
| 2x16P | 38.10 | 40.64 |
| 2x17P | 40.64 | 43.18 |
| 2x18P | 43.18 | 45.72 |
| 2x19P | 45.72 | 48.26 |
| 2x20P | 48.26 | 50.80 |
| 2x21P | 50.80 | 53.34 |
| 2x22P | 53.34 | 55.88 |
| 2x23P | 55.88 | 58.42 |
| 2x24P | 58.42 | 60.96 |
| 2x25P | 60.96 | 63.50 |



Unit: mm

A2550HK-2xXP

2.54mm Pitch Crimp Flex Housing

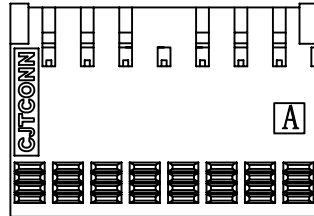
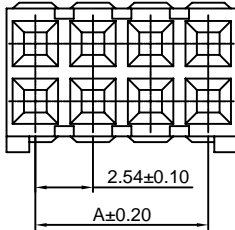
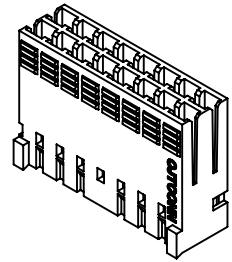
Reference Informations:

- *Material: PBT30%GF, UL94V-0
- *Suitable CJT A2550 series Terminal (A2550-T-K)
- *Color: Blue

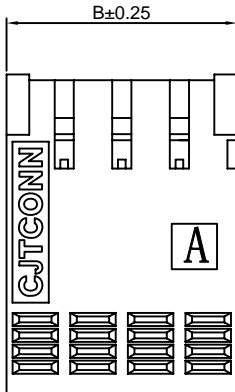
Ordering Information:

A2550HK-2xXP - ***
1 2

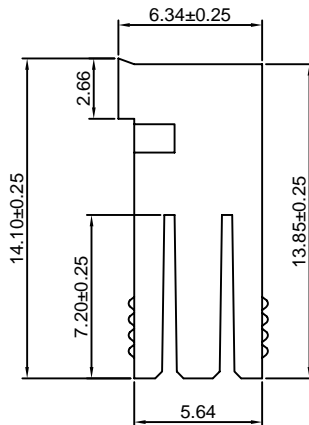
1. Part No.
2. Material:
(blank): PBT30%GF, UL94V-0
GWT: PBT, UL94V-0, GWT 750°C



2x8P~2x36P



2x2P~2x7P



Ordering Information & Dimensions:

| PART NO. | Dimensions | | PART NO. | Dimensions | |
|----------|------------|-------|----------|------------|-------|
| | A | B | | A | B |
| 2x2P | 2.54 | 5.08 | 2x20P | 48.26 | 50.80 |
| 2x3P | 5.08 | 7.62 | 2x21P | 50.80 | 53.34 |
| 2x4P | 7.62 | 10.16 | 2x22P | 53.34 | 55.88 |
| 2x5P | 10.16 | 12.70 | 2x23P | 55.88 | 58.42 |
| 2x6P | 12.70 | 15.24 | 2x24P | 58.42 | 60.96 |
| 2x7P | 15.24 | 17.78 | 2x25P | 60.96 | 63.50 |
| 2x8P | 17.78 | 20.32 | 2x26P | 63.50 | 66.04 |
| 2x9P | 20.32 | 22.86 | 2x27P | 66.04 | 68.58 |
| 2x10P | 22.86 | 25.40 | 2x28P | 68.58 | 71.12 |
| 2x11P | 25.40 | 27.94 | 2x29P | 71.12 | 73.66 |
| 2x12P | 27.94 | 30.48 | 2x30P | 73.66 | 76.20 |
| 2x13P | 30.48 | 33.02 | 2x31P | 76.20 | 78.74 |
| 2x14P | 33.02 | 35.56 | 2x32P | 78.74 | 81.28 |
| 2x15P | 35.56 | 38.10 | 2x33P | 81.28 | 83.82 |
| 2x16P | 38.10 | 40.64 | 2x34P | 83.82 | 86.36 |
| 2x17P | 40.64 | 43.18 | 2x35P | 86.36 | 88.90 |
| 2x18P | 43.18 | 45.72 | 2x36P | 88.90 | 91.44 |
| 2x19P | 45.72 | 48.26 | | | |

Unit: mm

A2550WVF-XP

2.54mm Pitch Crimp Flex Wafer

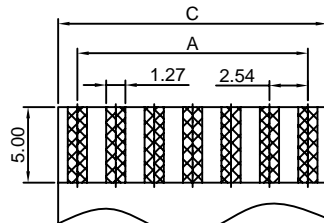
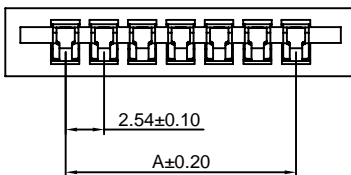
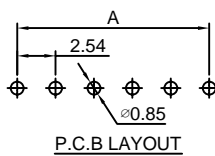
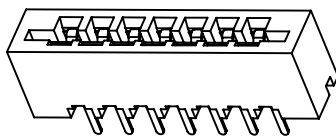
Reference Informations:

- *Material: PBT, UL94V-0
- *Terminal Material: Phosphor Bronze/Tin over Nickel
- *Color: Black

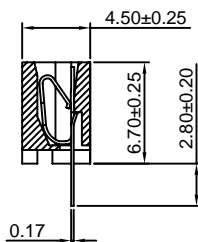
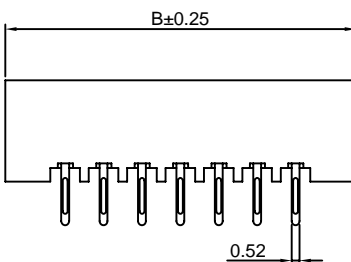
Ordering Information:

A2550WVF-XP - ***
1 2

1. Part No.
2. Material:
(blank): PBT, UL94V-0
GWT: PBT, UL94V-0, GWT 750°C



FPC/FFC T=0.30



Ordering Information & Dimensions:

| PART NO. | Dimensions | | |
|----------|------------|-------|-------|
| | A | B | C |
| 3P | 5.08 | 13.04 | 10.16 |
| 4P | 7.62 | 15.58 | 12.70 |
| 5P | 10.16 | 18.12 | 15.24 |
| 6P | 12.70 | 20.66 | 17.78 |
| 7P | 15.24 | 23.20 | 20.32 |
| 8P | 17.78 | 25.74 | 22.86 |
| 9P | 20.32 | 28.28 | 25.40 |
| 10P | 22.86 | 30.82 | 27.94 |
| 11P | 25.40 | 33.36 | 30.48 |
| 12P | 27.94 | 35.90 | 33.02 |
| 13P | 30.48 | 38.44 | 35.56 |
| 14P | 33.02 | 40.98 | 38.10 |
| 15P | 35.56 | 43.52 | 40.64 |
| 16P | 38.10 | 46.06 | 43.18 |
| 17P | 40.64 | 48.60 | 45.72 |
| 18P | 43.18 | 51.14 | 48.26 |
| 19P | 45.72 | 53.68 | 50.80 |
| 20P | 48.26 | 56.22 | 53.34 |
| 21P | 50.80 | 58.76 | 55.88 |
| 22P | 53.34 | 61.30 | 58.42 |
| 23P | 55.88 | 63.84 | 60.96 |
| 24P | 58.42 | 66.38 | 63.50 |
| 25P | 60.96 | 68.92 | 66.04 |

Unit: mm

A2550WRF-XP

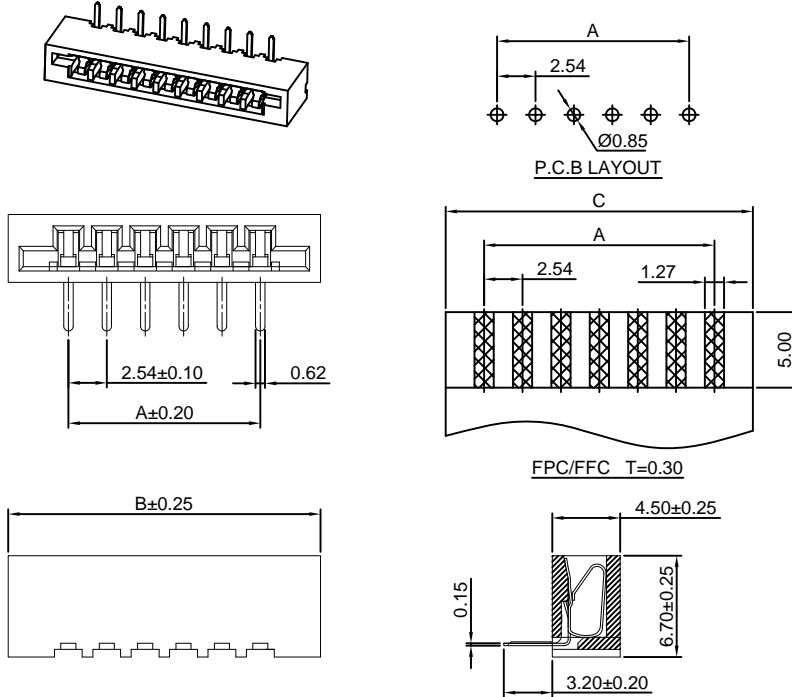
2.54mm Pitch Crimp Flex Wafer

Reference Informations:

- *Material: PBT, UL94V-0
- *Terminal Material: Phosphor Bronze/Tin over Nickel
- *Color: Black

Ordering Information:

- A2550WRF-XP - ***
- | | |
|---|---|
| 1 | 2 |
|---|---|
- 1. Part No.
 - 2. Material:
(blank): PBT, UL94V-0
GWT: PBT, UL94V-0, GWT 750°C



Ordering Information & Dimensions:

| PART NO. | Dimensions | | |
|----------|------------|-------|-------|
| | A | B | C |
| 3P | 5.08 | 13.04 | 10.16 |
| 4P | 7.62 | 15.58 | 12.70 |
| 5P | 10.16 | 18.12 | 15.24 |
| 6P | 12.70 | 20.66 | 17.78 |
| 7P | 15.24 | 23.20 | 20.32 |
| 8P | 17.78 | 25.74 | 22.86 |
| 9P | 20.32 | 28.28 | 25.40 |
| 10P | 22.86 | 30.82 | 27.94 |
| 11P | 25.40 | 33.36 | 30.48 |
| 12P | 27.94 | 35.90 | 33.02 |
| 13P | 30.48 | 38.44 | 35.56 |
| 14P | 33.02 | 40.98 | 38.10 |
| 15P | 35.56 | 43.52 | 40.64 |
| 16P | 38.10 | 46.06 | 43.18 |
| 17P | 40.64 | 48.60 | 45.72 |
| 18P | 43.18 | 51.14 | 48.26 |
| 19P | 45.72 | 53.68 | 50.80 |
| 20P | 48.26 | 56.22 | 53.34 |
| 21P | 50.80 | 58.76 | 55.88 |
| 22P | 53.34 | 61.30 | 58.42 |
| 23P | 55.88 | 63.84 | 60.96 |
| 24P | 58.42 | 66.38 | 63.50 |
| 25P | 60.96 | 68.92 | 66.04 |

Unit: mm

A2550WVFD-F-XP

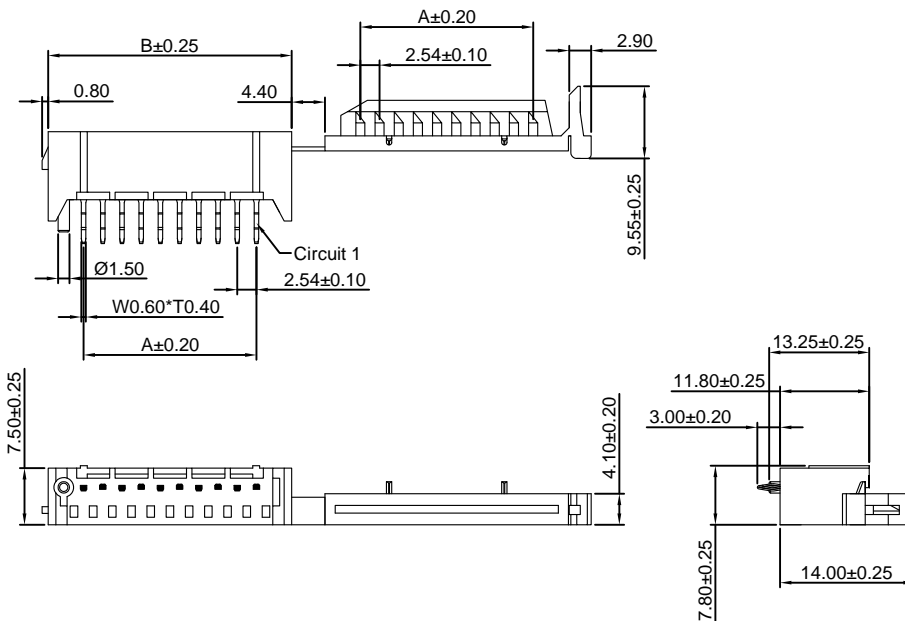
2.54mm Pitch Crimp Flex Wafer

Reference Informations:

- *Material: Nylon 66, UL94V-0
- *Terminal Material: Phosphor Bronze/Tin over Nickel
- *Color: White

Ordering Information:

- A2550WVFD-F-XP - ***
- | | |
|---|---|
| 1 | 2 |
|---|---|
- 1. Part No.
 - 2. Material:
(blank): Nylon 66, UL94V-0
GWT: Nylon 66, UL94V-0, GWT 750°C



Ordering Information & Dimensions:

| PART NO. | Dimensions | |
|----------|------------|-------|
| | A | B |
| 1P | --- | 9.34 |
| 2P | 2.54 | 11.88 |
| 3P | 5.08 | 14.42 |
| 4P | 7.62 | 16.96 |
| 5P | 10.16 | 19.50 |
| 6P | 12.70 | 22.04 |
| 7P | 15.24 | 24.58 |
| 8P | 17.78 | 27.12 |
| 9P | 20.32 | 29.66 |
| 10P | 22.86 | 32.20 |
| 11P | 25.40 | 34.74 |
| 12P | 27.94 | 37.28 |
| 13P | 30.48 | 39.82 |
| 14P | 33.02 | 42.36 |
| 15P | 35.56 | 44.90 |
| 16P | 38.10 | 47.44 |
| 17P | 40.64 | 49.98 |
| 18P | 43.18 | 52.52 |
| 19P | 45.72 | 55.06 |
| 20P | 48.26 | 57.60 |
| 21P | 50.80 | 60.14 |
| 22P | 53.34 | 62.68 |
| 23P | 55.88 | 65.22 |
| 24P | 58.42 | 67.76 |
| 25P | 60.96 | 70.30 |

Unit: mm

A2550WRFD-XP

2.54mm Pitch Crimp Flex Wafer

Reference Informations:

- *Material:Nylon 66,UL94V-0
- *Terminal Material:Phosphor Bronze/Tin over Nickel
- *Color:White

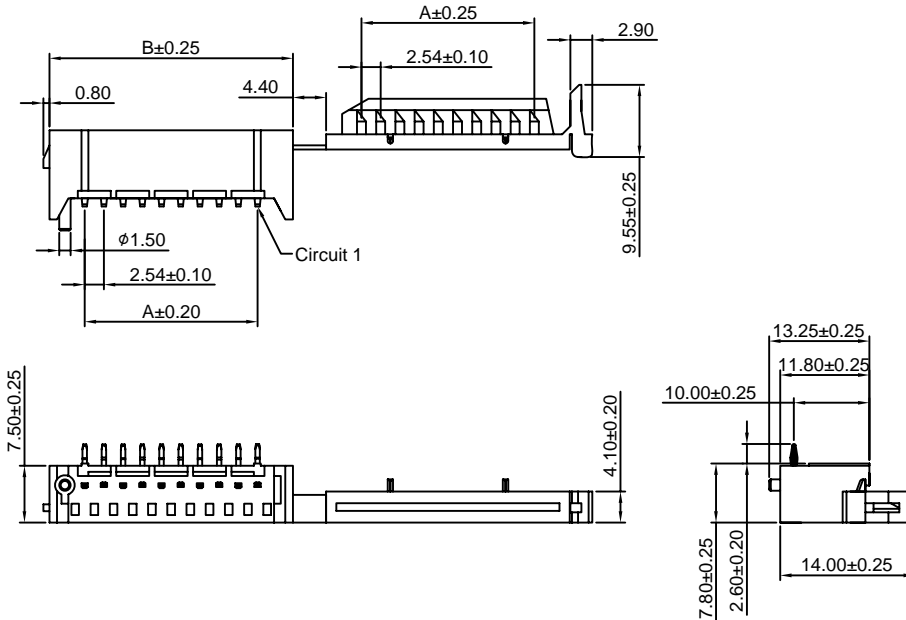
Ordering Information:

- A2550WRFD-XP - ***
 1 2
- 1.Part No.
 2.Material:
 (blank):Nylon 66,UL94V-0
 GWT:Nylon 66,UL94V-0,GWT 750°C

Ordering Information & Dimensions:

| PART NO. | Dimensions | |
|----------|------------|-------|
| | A | B |
| 1P | ---- | 9.34 |
| 2P | 2.54 | 11.88 |
| 3P | 5.08 | 14.42 |
| 4P | 7.62 | 16.96 |
| 5P | 10.16 | 19.50 |
| 6P | 12.70 | 22.04 |
| 7P | 15.24 | 24.58 |
| 8P | 17.78 | 27.12 |
| 9P | 20.32 | 29.66 |
| 10P | 22.86 | 32.20 |
| 11P | 25.40 | 34.74 |
| 12P | 27.94 | 37.28 |
| 13P | 30.48 | 39.82 |
| 14P | 33.02 | 42.36 |
| 15P | 35.56 | 44.90 |
| 16P | 38.10 | 47.44 |
| 17P | 40.64 | 49.98 |
| 18P | 43.18 | 52.52 |
| 19P | 45.72 | 55.06 |
| 20P | 48.26 | 57.60 |
| 21P | 50.80 | 60.14 |
| 22P | 53.34 | 62.68 |
| 23P | 55.88 | 65.22 |
| 24P | 58.42 | 67.76 |
| 25P | 60.96 | 70.30 |

Unit: mm



A2550WVFC-F-XP

2.54mm Pitch Crimp Flex Wafer

Reference Informations:

- *Material:PBT,UL94V-0
- *Terminal Material:Phosphor Bronze/Tin over Nickel
- *Color:Blue

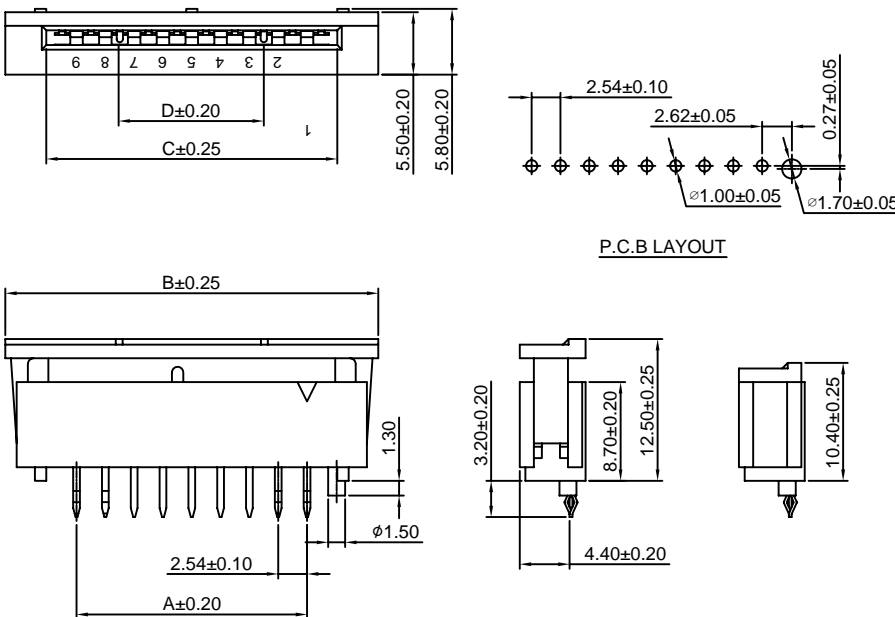
Ordering Information:

- A2550WVFC-F-XP - ***
 1 2
- 1.Part No.
 2.Material:
 (blank):PBT,UL94V-0
 GWT:PBT,UL94V-0,GWT 750°C

Ordering Information & Dimensions:

| PART NO. | Dimensions | | | |
|----------|------------|-------|-------|-------|
| | A | B | C | D |
| 8P | 17.78 | 30.34 | 23.12 | 10.16 |
| 9P | 20.32 | 32.88 | 25.66 | 12.70 |
| 10P | 22.86 | 35.42 | 28.20 | 15.24 |
| 11P | 25.40 | 37.96 | 30.74 | 17.78 |
| 12P | 27.94 | 40.50 | 33.28 | 20.32 |
| 13P | 30.48 | 43.04 | 35.82 | 22.86 |

Unit: mm



A2550HXXP-L-01

2.54mm Pitch FFC Cable



| CN1 CN2 | |
|--------------|----------------------------|
| ① Terminal | ② Housing |
| | A2550H,HA,HB-XP |
| A2550-T | A2550H-XP-A,A2550H-XP-A1 |
| A2550-T-H | A2550H-XP-A2,A2550H-XP-A2H |
| A2550-T-CR | A2550H-XP-A3H,A2550H-XP-B |
| A2550-T-H-CR | A2550H-XP-BH |
| A2550-T-A | A2550H-XP-C,A2550H-XP-C1 |
| A2550-T-C | A2550H-XP-D,A2550H-XP-E |
| | A2550H-XP-F,A2550H-XP-J |
| | A2550H,HA-2xXP |
| A2550-T-E | A2550H-XP-M,A2550H-XP-M1 |
| | A2550H-XP-M2,A2550H-XP-M3 |
| A2550-T-J | A2550H-XP-G,A2550H-XP-G1 |
| | A2550H-XP-H,A2550H-XP-H1 |
| | A2550H-XP-I,A2550H-XP-I1 |
| A2550-T-K | A2550HK-XP,A2550HK-2xXP |
| A2550M-T | A2550H-XP,A2550H-XP-D |
| | A2550H-XP-J,A2550H-2xXP |

Unit: mm

A2550HXXPA2550MXX-L-01

2.54mm Pitch FFC Cable



| ① Terminal | CN1 | | CN2 |
|--------------|----------------------------|--|---------------------------|
| | ② Housing | | ③ Terminal |
| | A2550H,HA,HB-XP | | |
| A2550-T | A2550H-XP-A,A2550H-XP-A1 | | |
| A2550-T-H | A2550H-XP-A2,A2550H-XP-A2H | | |
| A2550-T-CR | A2550H-XP-A3H,A2550H-XP-B | | |
| A2550-T-H-CR | A2550H-XP-BH | | |
| A2550-T-A | A2550H-XP-C,A2550H-XP-C1 | | A2550M-T-C, A2550M-T-CA |
| A2550-T-C | A2550H-XP-D,A2550H-XP-E | | A2550M-T-C1, A2550M-T-C1A |
| | A2550H-XP-F,A2550H-XP-J | | A2550M-T-C2, A2550M-T-E |
| | A2550H,HA-2xXP | | A2550M-T-KE, A2550M-T-F |
| A2550-T-E | A2550H-XP-M,A2550H-XP-M1 | | A2550M-T-G, A2550MA-T-G |
| | A2550H-XP-M2,A2550H-XP-M3 | | A2550M-T-J, A2550M-T-K |
| A2550-T-J | A2550H-XP-G,A2550H-XP-G1 | | |
| | A2550H-XP-H,A2550H-XP-H1 | | |
| | A2550H-XP-I,A2550H-XP-I1 | | |
| A2550-T-K | A2550HK-XP,A2550HK-2xXP | | |
| A2550M-T | A2550H-XP,A2550H-XP-D | | |
| | A2550H-XP-J,A2550H-2xXP | | |

Unit: mm

X-ON Electronics

Largest Supplier of Electrical and Electronic Components

Click to view similar products for [Headers & Wire Housings](#) category:

Click to view products by [Changjiang](#) manufacturer:

Other Similar products are found below :

[95000-104TRLF](#) [10135584-644402LF](#) [DF62W-EP2022PCA](#) [95000-106TRLF](#) [DF62W-2022SCA](#) [DF62W-EP2022PC](#) [2203348](#) [DF62W-2022SC](#) [1084018](#) [1029039](#) [1084017](#) [802-10-012-10-002000](#) [1112640](#) [1112639](#) [891-007-9SS-BST1T](#) [000-34000](#) [0008550134](#) [0009482033](#) [0009507031](#) [57102-F02-18ULF](#) [57102-S06-03LF](#) [57202-S52-04LF](#) [PCN6-15S-2.5E](#) [0039019024](#) [58102-G61-06LF](#) [582553-1](#) [0009485154](#) [0009508121](#) [0022285053](#) [0050291907](#) [018731A](#) [LY20-4P-DT1-P1E-BR](#) [02.125.8002.8](#) [60101931](#) [60598-1 \(Cut Strip\)](#) [M1625-3R/100](#) [61062-3](#) [61082-181009](#) [CSU011177004](#) [636-1427](#) [638009-1](#) [641938-9](#) [641991-4](#) [644168-1](#) [644827-2](#) [647662-1](#) [65039-019ELF](#) [65692-001LF](#) [65781-018](#) [65781-047](#)