

# APPROVAL SPECIFICATIONS

Title. NANO SIM+NANO SIM+TF三選二卡座

Product Model. MCS-303

Customer's Part NO.

Customer's Model:

## **Customer's Approval Requested.**

Please return this copy as a certification of your approval.

Checked by: \_\_\_\_\_ Date: \_\_\_\_\_

Approved by: \_\_\_\_\_ Date: \_\_\_\_\_

APPROVE	REVIEW	POLT
王凯	林永坚	陈旺

**XUNPU ELECTRONICS CO.,LTD**

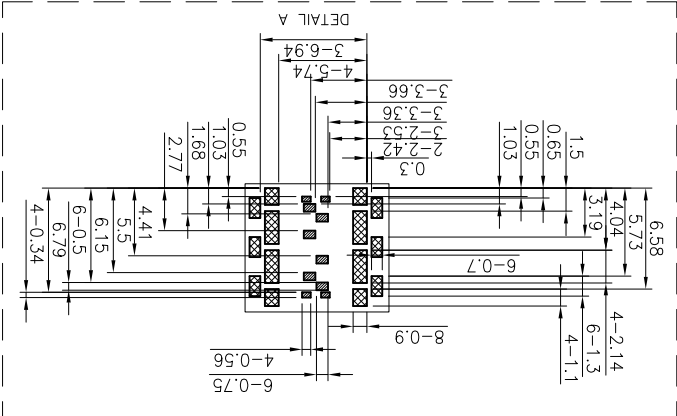


action and only for mechanical function

action and only for mechanical function

SMT process

UNLESS OTHERWISE SPECIFIED TOLERANCES		東莞市訊普電子科技有限公司	
DECIMALS:	ANGLES:	TITLE	1.35H Nano&tf 3in2 with tray (Pin Push)Conn.
X : ±0.5	X X : ±2	DWN	ALLEN
X X : ±0.20	X X : ±1	CHKD	KEVIN
X XX : ±0.10		APVD	ERIC.W
		SIZE:	A3
		SHEET:	10F 1
		REV:	A
		PART NO.	MCS-303-A1



Pin	NAME
P13	Detect Switch
P1~P12	Ground

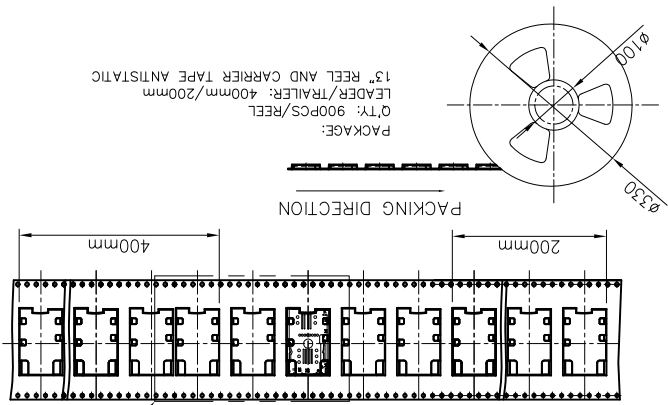
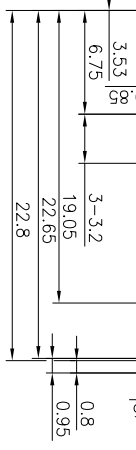
Holder Pin Definition

NANO SIM	NAME
S1,S11,S2,S12	Vcc
S3,S13	RST
S4,S5,S14,S15	CLK
S6,S7,S16,S17	I/O
S8,S18	Vpp
S9,S10,S19,S20	GND

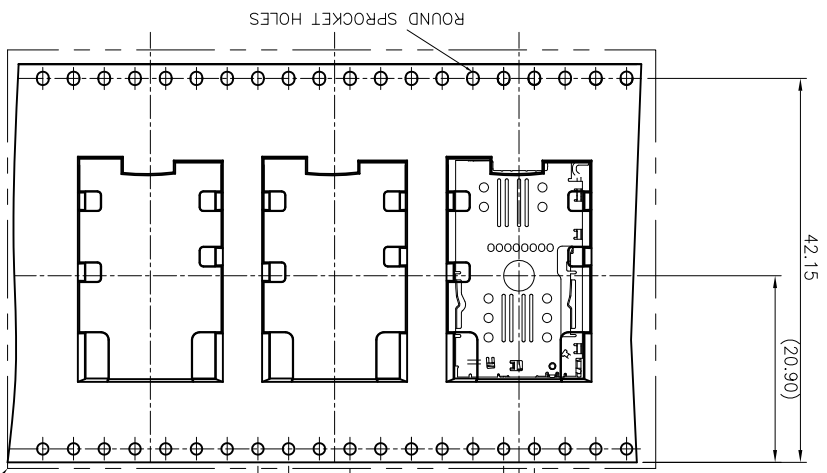
SIM Block Pin Definition

Pin	NAME
C1	DAT2
C2	CD/DAT3
C3	CMD
C4	Vpp
C5	CLK
C6	Vss
C7	DAT0
C8	DAT1

USD Block Pin Definition



USER DIRECTION OF UNREELING

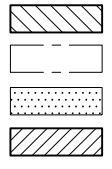


PACKAGING DRAWING

DETAILS A  
NOT TO SCALE

<p>UNLESS OTHERWISE SPECIFIED TOLERANCES</p> <p>DECIMALS: ANGLES: TITLE: 0.3H SIM CARD CONN.</p> <p>DWN ALLEN PART NO. MCS-303-B1</p> <p>CHKD KEVIN SCALE:1:1 UNIT: mm</p> <p>APVD ERIC.W SIZE: A3 SHEET:10F 1 REV: A1</p> <p>CUSTOMER COPY</p>										<p>NO. PART NAME QTY MATERIAL DESCRIPTION REMARK</p>										<p>① Contact 1 NKT-322 Under Plating:Ni 1.25um min Solder area:Plating Au 0.025um min T=0.08±0.01mm</p>										<p>② Housing 1 LCP 6808 COLOUR:BLACK UL 94V-0</p>										<p>東莞市訊普電子科技有限公司</p>										<p>ANY CONDUCTIVE TRACES THIS AREA SHOULD BE FREE OF SMT SOLDER AREA (POSSIBLY TOUCH OF COMPONENTS ON PCB)</p>										<p>OPEN WIRE RESTRICTED AREA</p>										<p>X : ±0.5 X : ±2°</p>										<p>X.X : ±0.20 X.X : ±1°</p>										<p>X.XX : ±0.10</p>										<p>3. MECHANICAL: 3.1 Contact Force:0.2N Min Humidity 80% R.H MAX</p>										<p>2. SPECIALITY: 2.1 Rated current:0.5A Max 2.2 Rated voltage:10V DC 2.3 Contact Resistance:60mΩ MAX 2.4 Insulation Resistance:100MΩ MIN 500V DC 2.5 Dielectric withstanding voltage: 500V AC 1 MINUTE. 2.6 Solder ability:245±5°C, 5±0.5s. 2.7 Durability:3000 Cycles Min. 2.8 Operating condition:Temperature-20°C~+85°C</p>										<p>1. MATERIAL:SEE TABLE 1.</p>										<p>NOTES:</p>										<p>Solder area S1~S10</p>										<p>Before Reflow</p>										<p>0.87±0.08</p>										<p>0.35±0.05</p>										<p>0.08</p>										<p>6-0.25</p>										<p>6-0.75</p>										<p>4-0.34</p>										<p>8.18</p>										<p>3.95</p>										<p>5.04</p>										<p>5.69</p>										<p>6.24</p>										<p>7.28</p>										<p>5.69</p>										<p>5.13</p>										<p>5.11</p>										<p>4.48</p>										<p>0.52</p>										<p>7.70</p>										<p>NANO SIM Pin definition</p>										<table border="1"> <tr><th>PIN</th><th>NAME</th></tr> <tr><td>S1,S2</td><td>Vcc</td></tr> <tr><td>S3</td><td>RST</td></tr> <tr><td>S4,S5</td><td>CLK</td></tr> <tr><td>S6,S7</td><td>I/O</td></tr> <tr><td>S8</td><td>Vpp</td></tr> <tr><td>S9,S10</td><td>GND</td></tr> </table>										PIN	NAME	S1,S2	Vcc	S3	RST	S4,S5	CLK	S6,S7	I/O	S8	Vpp	S9,S10	GND	<p>UL 94V-0</p>										<p>COLOUR:BLACK</p>										<p>DESCRIPTION</p>										<p>REMARK</p>										<p>東莞市訊普電子科技有限公司</p>									
PIN	NAME																																																																																																																																																																																																																																																																																																																																																																																																																																						
S1,S2	Vcc																																																																																																																																																																																																																																																																																																																																																																																																																																						
S3	RST																																																																																																																																																																																																																																																																																																																																																																																																																																						
S4,S5	CLK																																																																																																																																																																																																																																																																																																																																																																																																																																						
S6,S7	I/O																																																																																																																																																																																																																																																																																																																																																																																																																																						
S8	Vpp																																																																																																																																																																																																																																																																																																																																																																																																																																						
S9,S10	GND																																																																																																																																																																																																																																																																																																																																																																																																																																						

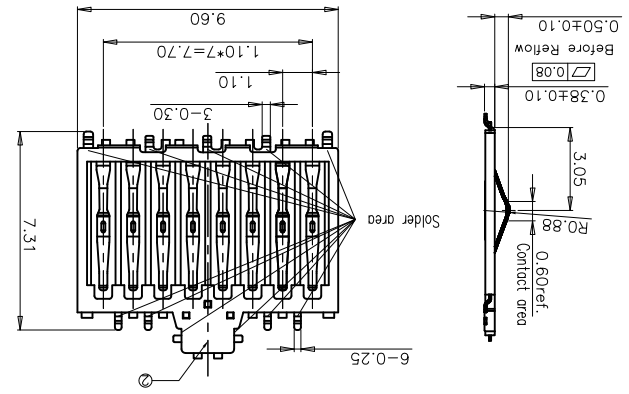
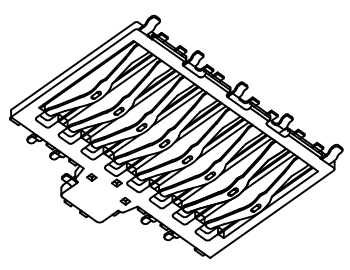
<p>6</p>	<p>5</p>	<p>4</p>	<p>3</p>	<p>2</p>															
<p>CUSTOMER COPY</p> <table border="1"> <tr> <td>APVD</td> <td>ERIC.W</td> <td>SIZE: A3</td> <td>SHEET: 10F 1</td> <td>REV: A1</td> </tr> <tr> <td>CHKD</td> <td>KEVIN</td> <td>SCALE: 1:1</td> <td>UNIT: mm</td> <td></td> </tr> <tr> <td>DWN</td> <td>ALLEN</td> <td>PART NO. MCS-303-C1</td> <td></td> <td></td> </tr> </table>		APVD	ERIC.W	SIZE: A3	SHEET: 10F 1	REV: A1	CHKD	KEVIN	SCALE: 1:1	UNIT: mm		DWN	ALLEN	PART NO. MCS-303-C1			<p>DECIMALS: ANGLES: X: ±0.5 X: ±2° X.X: ±0.20 X.X: ±1° X.XX: ±0.10</p>		<p>UNLESS OTHERWISE SPECIFIED TOLERANCES</p> <p>1. Touch area of contact tips, no electrical function and only for mechanical function</p> <p>2. Don't brush Tin pasted on the area during SMT process.</p>
APVD	ERIC.W	SIZE: A3	SHEET: 10F 1	REV: A1															
CHKD	KEVIN	SCALE: 1:1	UNIT: mm																
DWN	ALLEN	PART NO. MCS-303-C1																	
<p>東莞市訊普電子科技有限公司</p>		<p>TITLE: 0.3H Micro SD CARD BLOCK CONN.</p>																	
<p>REMARK</p>		<p>DESCRIPTION</p>		<p>NO. PART NAME QTY MATERIAL</p>															
<p>UL 94V-0</p>		<p>COLOUR: BLACK</p>																	
<p>①</p>		<p>Contact</p>		<p>②</p>															
<p>T=0.08±0.01mm</p>		<p>1 COPPER ALLOY</p>																	
<p>Contact Area: Au 1U"Min; Under plate Ni 50U"Min oil over</p>		<p>1 LCP</p>		<p>③</p>															
<p>UL 94V-0</p>		<p>COLOUR: BLACK</p>		<p>UL 94V-0</p>															



μSD Block Pin Definition

PIN	NAME
C8	DATA1
C7	DATA0
C6	VSS2
C5	CLK
C4	VCD
C3	CMD
C2	CD/DATA3
C1	DATA2

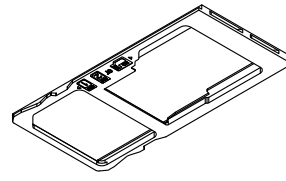
- NOTES:
- MATERIAL: SEE TABLE 1.
  - SPECIALITY:
  - Rated current: 0.5A Max
  - Rated voltage: 10V DC
  - Contact Resistance: 60mΩ MAX
  - Insulation Resistance: 1000MΩ MIN 500V DC
  - Dielectric withstanding voltage: 500V AC 1 MINUTE.
  - Solder ability: 245±5°C, 5±0.5s.
  - Durability: 3000 Cycles Min.
  - Operating condition: Temperature -20°C~+85°C; Humidity 80% R.H MAX
  - MECHANICAL:
  - Contact Force: 0.2N Min



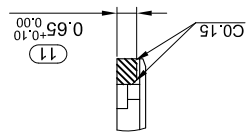
行, 多料, 扭曲变形, 裂痕  
 标注尺寸, 参考3D图档,  
 木图纸, 项目所有的不同卡  
 参考模型。

UNLESS OTHERWISE SPECIFIED TOLERANCES		DECIMALS: ANGLES:		TITLE	
X ±0.5 X ±2°		DWN ALLEN		双Nano&TF三选二卡托(单体)冲压件	
X X ±0.20 X X ±1°		CHKD KEVIN		PART NO. MCS-303-KT1	
X XX ±0.10		APVD ERIC.W		SCALE:1:1	
CUSTOMER COPY		SIZE: A3		UNIT: mm	
		SHEET: 1 OF 1		REV: B	

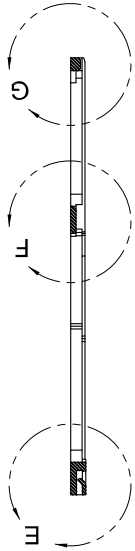
東莞市訊普電子科技有限公司



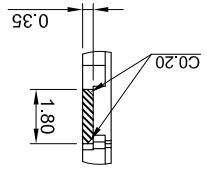
SEE DETAIL:G



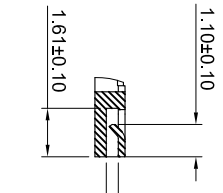
SECTION:A-A



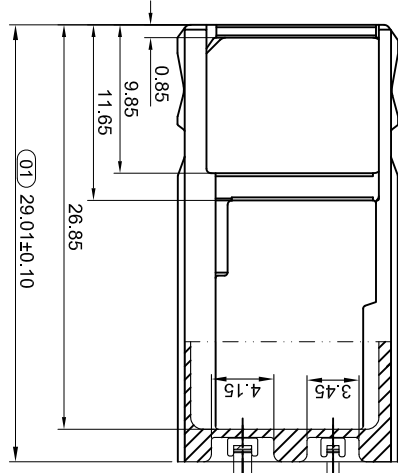
SEE DETAIL:F



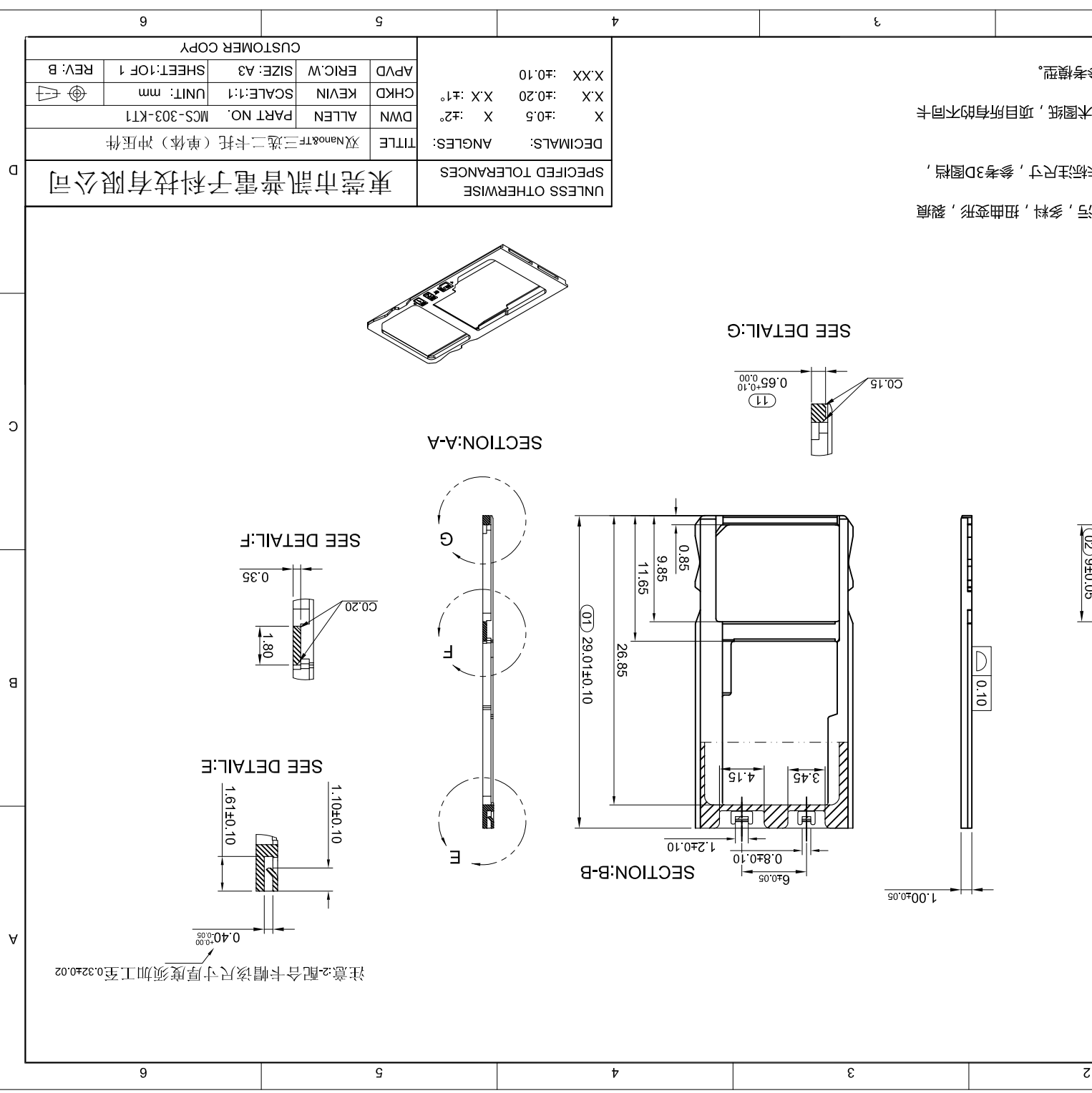
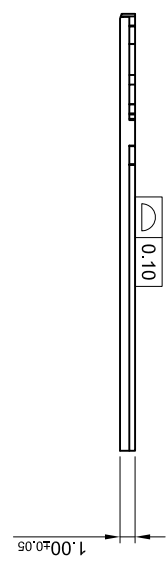
SEE DETAIL:E



注意:2-配合卡帽该尺寸厚度须加工至0.32±0.02



SECTION:B-B



## X-ON Electronics

Largest Supplier of Electrical and Electronic Components

*Click to view similar products for [Standard Card Edge Connectors](#) category:*

*Click to view products by [XUNPU](#) manufacturer:*

Other Similar products are found below :

[6565204-6](#) [PKC-156](#) [1437274-4](#) [147889-1](#) [1489165-4](#) [EBT156-12B1X](#) [EBT15622B2X](#) [EBT156-22R2W](#) [1-582587-1](#) [1-582589-1](#) [2-6437275-9](#) [284-0102-12100](#) [306022901000000](#) [307-012-502-202](#) [307-024-526-201](#) [307-056-520-300](#) [307-080-526-208](#) [1926088-2](#) [245-062-520-350](#) [287-0032-12101](#) [306-010-500-112](#) [306-028-525-102](#) [306-240-318](#) [307-036-502-202](#) [307-036-521-301](#) [307-072-526-202](#) [345-060-559-303](#) [368-004-520-201](#) [392-008-559-201](#) [534671-1](#) [5-530501-5](#) [341-240-317](#) [345-029-520-300](#) [345-030-500-301](#) [345-044-500-300](#) [345-220-058](#) [346-240-318](#) [357-030-526-201](#) [387-012-523-300](#) [395-044-520-300](#) [395-100-524-300](#) [50-12B-10](#) [50-6SN-5](#) [09-07-2032](#) [10035388-106LF](#) [10035388-802LF](#) [10115859-011LF](#) [10122859-009LF](#) [101269333204245CLF](#) [10127905-B04B24BLF](#)