



# Cixi Dibo Electronics Co., LTD

产品规格书  
product specification

电气性能/Electrical  
参考标准/Standard: UL IEC

额定电压/Rated voltage: 300V 320V

额定电流/Rated current: 15A 20A

接触电阻/Contact resistance: 20mΩ

耐电压/Withstanding voltage: AC2000V/1min

绝缘电阻/Insulation resistance: 500MΩ/DC500V

机械性能/Mechanical

温度范围/Temp.Range: -40°C~+105°C

瞬间温度/MAX Soldering: +250°C, for 5 Sec

尺寸/Dimensions

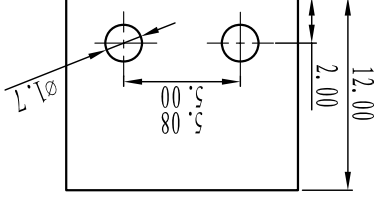
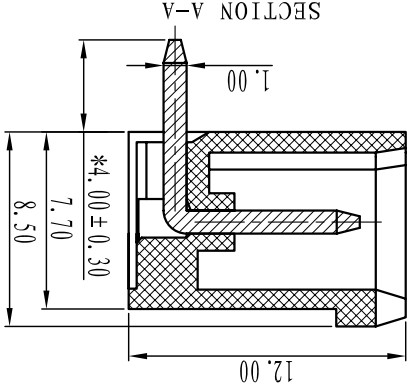
间距/Pitch: 5.00mm, 5.08mm

极数/Poles: 2P-24P

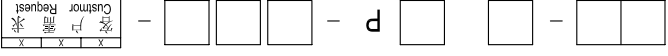
材质及电镀/Material

塑件/Housing: PA66, UL94V-0

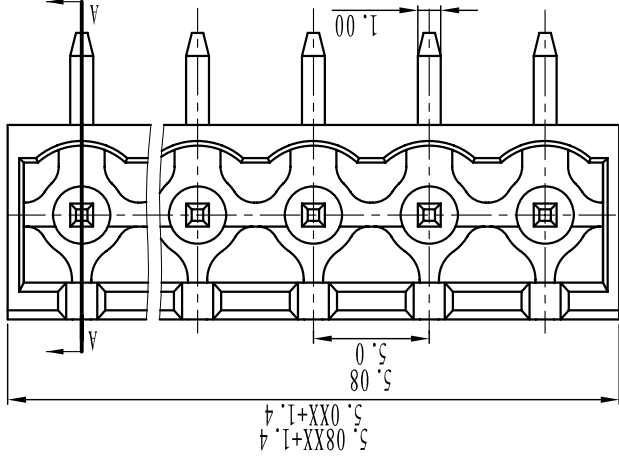
焊针/Pin header: Brass, Tin plated



订购方式:  
HOW TO ORDER:



0.未定义/No definition	1.单间距/Sing pitch	2.双间距/Double pitch
灰色/Gray 10	蓝色/Blue 20	黑色/Black 30
绿色/Green 40	橙色/Orange 50	红色/Red 60
透明/Transparent 70	黄色/Yellow 80	白色/White 90



TOOLERANCES EXCEPT AS NOTED

linear dimension	filllet	chamfer	short angle sid	tolerance
all to	all to	6 to	over	Variable
480 to	480 to	10 to	over	6 to
120 to	120 to	50 to	over	30 to
6 to	6 to	10 to	over	6 to
±0.5	±1	1°	30'	±0.1
±0.2	±1	1°	30'	±0.2
±0.9	±0.5	±0.5	20'	±0.3
±0.5	±0.5	±0.5	10'	±0.2
±0.25	0.06	0.06	0.12	±0.1
0.5	0.025	0.025	0.12	±0.1
10'	0.5	0.5	0.12	0.4

Cixi Dibo Electronics Co., LTD

名称/NAME: DB2ERC-5.08

第一视角/FIRST ANGLE PROJECTION

单位/UNITS: mm

尺寸/SIZE: A4

比例/SCALE: A4

## X-ON Electronics

Largest Supplier of Electrical and Electronic Components

*Click to view similar products for [Pluggable Terminal Blocks](#) category:*

*Click to view products by [DIBO](#) manufacturer:*

Other Similar products are found below :

[57.404.7553](#) [57.504.0053.7](#) [57.510.0053](#) [57.910.6153](#) [01.112.1453](#) [CTB932VE/6](#) [MC 1.5/ 6-ST-3.5 GY AU](#) [ET02015000J0G](#) [734-104](#) [734-302](#) [734-304](#) [8-141-P](#) [FKCT 2.5/ 3-ST KMGY](#) [860505](#) [860508](#) [860516](#) [860810](#) [861908](#) [GBPACX-12](#) [93.731.4953.0](#) [PV05-5,08-K](#) [PVP02-5,00](#) [PVP04-3,50](#) [PVS02-5,00](#) [1-1986160-3](#) [H-10](#) [1546228-5](#) [ELFH09150](#) [ELFH16150](#) [ELFP03110](#) [ELFT06250](#) [ELFT07250](#) [ELVF09400](#) [ELVP03100](#) [ELXH03100](#) [ELXH071G0E](#) [ELXP041G0](#) [ELXT046G0](#) [1700101](#) [1700410](#) [1700425](#) [1703176](#) [1703243](#) [1705229](#) [1710175](#) [1714537](#) [1717806](#) [1719600](#) [1728941](#) [1729386](#)