

**SPECIFICATIONS**

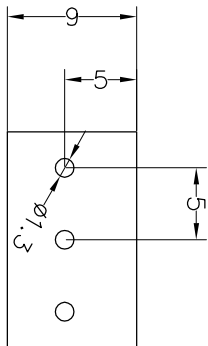
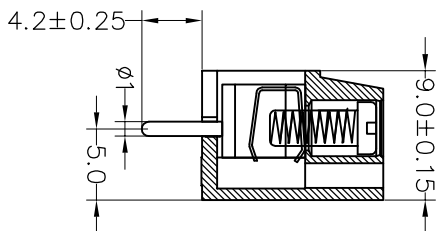
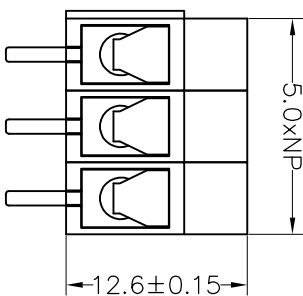
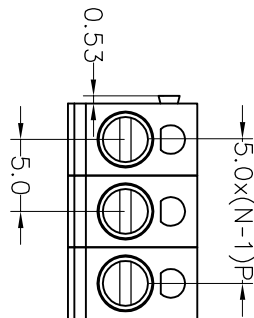
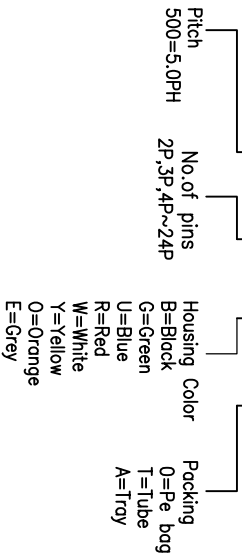
Rated (额定参数): 300V, 12A  
 Dielectric strength (抗电强度): AC2000V/1 Minute  
 Insulation Resistance (绝缘电阻): 1000MΩ Min  
 Contact Resistance (接触电阻): 20mΩ Max  
 Screw Torque (扭矩): 0.5Nm (4.4lb.in)  
 Wire Range (线径): 14~22AWG  
 Strip length (剥线长度): 4.5~5mm  
 Temp. range (操作温度): -40°C~+105°C  
 MAX Soldering (瞬时温度): +250°C, 5s

Housing Material (塑件): PA66 (UL94 V-0)  
 Contact (端子): Brass, Tin plating (黄铜镀锡)  
 Wire protector (弹片): Bronze (磷铜), Ni plating (镍鍍)  
 Screw (螺丝): M3.0, Steel, Zinc plating (钢, 镀锌)

| PITCH RANGE<br>IN MM |       | NOMINAL DIMENSION RANGE<br>IN MM |       |       |       |       |       |
|----------------------|-------|----------------------------------|-------|-------|-------|-------|-------|
| OVER                 | TO    | OVER                             | TO    | OVER  | TO    | OVER  | TO    |
| 6                    | 10    | 10                               | 30    | 60    | 100   | 100   | 150   |
| 10                   | 24    | 30                               | 60    | 100   | 150   | 150   | 150   |
| ±0.10                | ±0.15 | ±0.25                            | ±0.30 | ±0.30 | ±0.50 | ±0.70 | ±1.00 |

**Ordering Information**

**JL 300-500 XX U X 1**



Recommended P.C.B Layout (Top Side)

| OPERATION |       | DRAW    |          | SCALE |     | FIT    |                             | TITLE:   |                 |
|-----------|-------|---------|----------|-------|-----|--------|-----------------------------|----------|-----------------|
| DIM       | TOL   | DRAW    | BEN      | UNIT  | mm  | PROJ.  | 1/1                         | PART NO. | JL 300-500XXUX1 |
| X.X       | ±0.30 | CHECK   | 17.01.04 | A4    | 1/1 | 5.00mm | Terminal Blocks Female 180° |          |                 |
| X.XX      | ±0.20 | CHECK   |          |       |     |        |                             |          |                 |
| X:XXX     | ±0.10 | CHECK   |          |       |     |        |                             |          |                 |
| Angle     | ±3°   | APPROVE |          |       |     |        |                             |          |                 |

**JIN** 深圳市锦凌电子有限公司  
 SHENZHEN JINLING ELECTRONIC CO.,LTD  
 Tel: 86-755-2997-5806/5802 Fax: 86-755-2997-5992

| REV | DATE       | MODIFICATION DESCRIPTION | CHANGE |
|-----|------------|--------------------------|--------|
| A0  | 2017.01.04 | NEW DRAWING              |        |
| 1   |            |                          |        |

## X-ON Electronics

Largest Supplier of Electrical and Electronic Components

*Click to view similar products for [Fixed Terminal Blocks](#) category:*

*Click to view products by [JILN](#) manufacturer:*

Other Similar products are found below :

[00175550202](#) [MBE-1512](#) [MBE-1520](#) [MBE-154](#) [MBE-156](#) [MBES-1510](#) [MBES-153](#) [MBES-156](#) [MH-2512](#) [MHE-132](#) [MHE-133](#) [MHE-163](#)  
[MI-254 \(35\)](#) [MI-272](#) [8739](#) [880507](#) [880508](#) [MPT-275](#) [1546551-6](#) [ELM023100](#) [ELM10110G](#) [ELVD12100](#) [BA311TU](#) [BA411SU](#) [MV-152](#)  
[MV-253/NCNOC](#) [MV-254-D](#) [MV-255](#) [MV-462](#) [MV-472](#) [MV-493](#) [MVE-252](#) [MVE-253](#) [MVE-258](#) [MVE-273](#) [MVEB-153](#) [1700096](#)  
[1702246](#) [1705142](#) [1712417](#) [1713020](#) [1713088](#) [1776118-2](#) [1790852](#) [1-796689-8](#) [1-796692-6](#) [1800001](#) [1800114](#) [1823215](#) [1838462](#)