

承 认 书

SPECIFICATION FOR APPROVAL

客户名称 CUSTOMER NAME: _____

客户料号 CUSTOMER NO. : _____

产品名称 PRODUCT NAME: PLUG-IN TERMINAL BLOCK

产品型号 PRODUCT TYPE: DB2EVC-5.0/5.08

文件版本 DOCUMENT VERSION: A

日期 DATE: 2017-11-23

APPROVED 客户承认	APPROVED BY 客户审核	APPROVED 客户确认

MAKE BY 制作	APPROVED BY 审核	APPROVED 确认
施杰	阮迪侃	陆少波

地址：中国浙江省慈溪市沧大公路828号

TEL: +86 13185980275

FAX: +86 574 63419581

<http://www.nbdibo.com>[E-mail:info@nbdibo.com](mailto:info@nbdibo.com)

DORABO®

Cixi Dibo Electronics Co., LTD

产品规格书
product specification

电气性能/Electrical

参考标准/Standard:	UL	IEC
UL 100	IEC 60335-1	
UL 100A	IEC 60335-1	
UL 100B	IEC 60335-1	
UL 100C	IEC 60335-1	
UL 100D	IEC 60335-1	
UL 100E	IEC 60335-1	
UL 100F	IEC 60335-1	
UL 100G	IEC 60335-1	
UL 100H	IEC 60335-1	
UL 100I	IEC 60335-1	
UL 100J	IEC 60335-1	
UL 100K	IEC 60335-1	
UL 100L	IEC 60335-1	
UL 100M	IEC 60335-1	
UL 100N	IEC 60335-1	
UL 100O	IEC 60335-1	
UL 100P	IEC 60335-1	
UL 100Q	IEC 60335-1	
UL 100R	IEC 60335-1	
UL 100S	IEC 60335-1	
UL 100T	IEC 60335-1	
UL 100U	IEC 60335-1	
UL 100V	IEC 60335-1	
UL 100W	IEC 60335-1	
UL 100X	IEC 60335-1	
UL 100Y	IEC 60335-1	
UL 100Z	IEC 60335-1	
UL 100AA	IEC 60335-1	
UL 100AB	IEC 60335-1	
UL 100AC	IEC 60335-1	
UL 100AD	IEC 60335-1	
UL 100AE	IEC 60335-1	
UL 100AF	IEC 60335-1	
UL 100AG	IEC 60335-1	
UL 100AH	IEC 60335-1	
UL 100AI	IEC 60335-1	
UL 100AJ	IEC 60335-1	
UL 100AK	IEC 60335-1	
UL 100AL	IEC 60335-1	
UL 100AM	IEC 60335-1	
UL 100AN	IEC 60335-1	
UL 100AO	IEC 60335-1	
UL 100AP	IEC 60335-1	
UL 100AQ	IEC 60335-1	
UL 100AR	IEC 60335-1	
UL 100AS	IEC 60335-1	
UL 100AT	IEC 60335-1	
UL 100AU	IEC 60335-1	
UL 100AV	IEC 60335-1	
UL 100AW	IEC 60335-1	
UL 100AX	IEC 60335-1	
UL 100AY	IEC 60335-1	
UL 100AZ	IEC 60335-1	
UL 100BA	IEC 60335-1	
UL 100BB	IEC 60335-1	
UL 100BC	IEC 60335-1	
UL 100BD	IEC 60335-1	
UL 100BE	IEC 60335-1	
UL 100BF	IEC 60335-1	
UL 100BG	IEC 60335-1	
UL 100BH	IEC 60335-1	
UL 100BI	IEC 60335-1	
UL 100BJ	IEC 60335-1	
UL 100BK	IEC 60335-1	
UL 100BL	IEC 60335-1	
UL 100BM	IEC 60335-1	
UL 100BN	IEC 60335-1	
UL 100BO	IEC 60335-1	
UL 100BP	IEC 60335-1	
UL 100BQ	IEC 60335-1	
UL 100BR	IEC 60335-1	
UL 100BS	IEC 60335-1	
UL 100BT	IEC 60335-1	
UL 100BU	IEC 60335-1	
UL 100BV	IEC 60335-1	
UL 100BW	IEC 60335-1	
UL 100BX	IEC 60335-1	
UL 100BY	IEC 60335-1	
UL 100BZ	IEC 60335-1	
UL 100CA	IEC 60335-1	
UL 100CB	IEC 60335-1	
UL 100CC	IEC 60335-1	
UL 100CD	IEC 60335-1	
UL 100CE	IEC 60335-1	
UL 100CF	IEC 60335-1	
UL 100CG	IEC 60335-1	
UL 100CH	IEC 60335-1	
UL 100CI	IEC 60335-1	
UL 100CJ	IEC 60335-1	
UL 100CK	IEC 60335-1	
UL 100CL	IEC 60335-1	
UL 100CM	IEC 60335-1	
UL 100CN	IEC 60335-1	
UL 100CO	IEC 60335-1	
UL 100CP	IEC 60335-1	
UL 100CQ	IEC 60335-1	
UL 100CR	IEC 60335-1	
UL 100CS	IEC 60335-1	
UL 100CT	IEC 60335-1	
UL 100CU	IEC 60335-1	
UL 100CV	IEC 60335-1	

额定电压/Rated voltage:	300V	320V
---------------------	------	------

额定电流/Rated current:	15A	20A
---------------------	-----	-----

接觸電阻/Contact resistance: 20m Ω

耐电压/Withstanding voltage: AC2000V/1Min

绝缘电阻/Insulation resistance: 500M Ω /DC500V

机械性能/Mechanical

温度范围/Temp.Range: $-40^{\circ}\text{C}\sim+105^{\circ}\text{C}$

瞬间温度/MAX Soldering: +250° C, for 5 Sec

尺寸/Dimensions

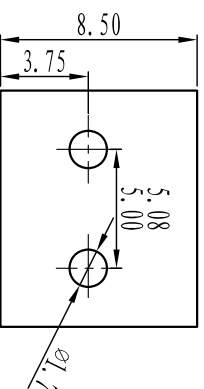
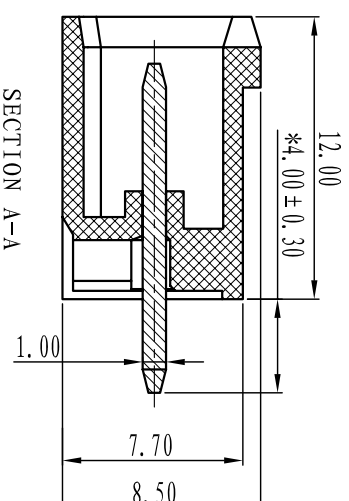
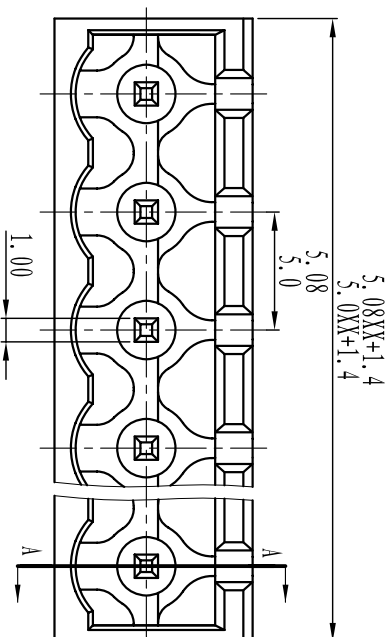
间距/Pitch: 5.00mm, 5.08mm

极数/Poles: 2P-24P

材质/电镀

塑件/Housing: PA66, UL94V-0

焊针/Pin header: Brass, Tin plated



订购方式：
HOW TO ORDER

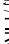
```

graph TD
    Root[杆] --> Single[单杆]
    Root --> Double[双杆]
    Double --> Grey[灰色]
    Double --> Blue[蓝色]
    Double --> Black[黑色]
    Double --> Green[绿色]
    Double --> Orange[橙色]
  
```

The diagram illustrates the classification of a 'Pole' (杆) into 'Single pitch' (单杆) and 'Double pitch' (双杆). The 'Double pitch' category is further divided into 'Grey' (灰色), 'Blue' (蓝色), 'Black' (黑色), 'Green' (绿色), and 'Orange' (橙色).

TOLERANCES EXCEPT AS NOTED

		linear dimension				fillet	chamfer	\sphericalangle	short angle sid				\equiv	—	\square	//	\perp
variable range	to	over 6	over 30	over 120	over 480		over 6	over 10	over 50	over 120		all	to 5	over 30	over 120	over 120	
	6 to 30	30 to 120	120 to 480	480 to all	all to 6	6 to 10	10 to 50	50 to 120	120 to all	all to 5	5 to 30	30 to 120	120 to 480	480 to all	all to 6	6 to 10	10 to 50
tolerance	± 0.1	± 0.2	± 0.3	± 0.5	± 0.9	± 0.2	± 0.5	± 1	1°	$30'$	$20'$	$10'$	0.5	0.025	0.06	0.12	0.4

单位 / UNITS	mm	尺寸 / SIZE	A4	比例 / SCALE	
Cixi Dibo Electronics Co., LTD					第一视角 / FIRST ANGLE PROJECTION
					
名称 / NAME		DB2EVC-5.0/5.08			

PRODUCT SPECIFICATION

产品规格书

1、技术参数 (Technical Data)

中心距 (Center Space) : 5.0/5.08mm

额定电气参数 (Rated Electrical Parameters) : UL 300V/16A IEC 320V/20A

工频耐压 (Frequency Voltage) : AC2500V, 1 分钟无异常 (No one minute abnormal)

脉冲耐压 (Rated Surge Voltage):4000V, 正负极各 5 次无异常 (All five are negative, No abnormal)

绝缘阻抗 (Insulation Resistance) : DC500V, 500M Ω 以上 (DC500V, 500M Ω above)

接触电阻 (Contact Resistance) : $\leq 8m\Omega$

2、工作环境 (Operation Environment)

工作温度 (Temperature) : $-40^{\circ}\text{C} \sim +105^{\circ}\text{C}$

海拔 (Altitude) : 2000m 以下 80Kpa \sim 106KPa

相对湿度 (Relative Humidity) : 5% \sim 95%

污染等级 (Contamination Class) : III

3、适用标准 (Applicable Standards)

IEC 60998-2-1

IEC 60947-7-1

UL 1059

UL 486E

4、工艺使用 (The use of Technology)

此种接线端子 (N 芯) 连接器采用焊接的方式与 PCB 板连接, 波峰焊接 $260 \pm 5^{\circ}\text{C}/5\text{s}$ 、2 次共 10s, 手工烙铁焊接 $350 \pm 5^{\circ}\text{C}/10\text{s}$, 使用连接方式有以下几种。

(The Terminal Blocks (N poles) connector used welding way connected with the PCB board, wave $260 \pm 5^{\circ}\text{C}/5\text{s}$, 2, a total of 10s, hand-welded iron $350 \pm 5^{\circ}\text{C}/10\text{s}$, connection with the use of the following.)

5、包装方式 (Packaging)

1、密封包装 (Seal Packaging)

X-ON Electronics

Largest Supplier of Electrical and Electronic Components

Click to view similar products for [Pluggable Terminal Blocks](#) category:

Click to view products by [DIBO](#) manufacturer:

Other Similar products are found below :

[57.404.7553](#) [57.504.0053.7](#) [57.510.0053](#) [57.910.6153](#) [01.112.1453](#) [CTB932VE/6](#) [MC 1.5/ 6-ST-3.5 GY AU](#) [ET02015000J0G](#) [734-104](#) [734-302](#) [734-304](#) [8-141-P](#) [FKCT 2.5/ 3-ST KMGY](#) [860505](#) [860508](#) [860516](#) [860810](#) [861908](#) [GBPACX-12](#) [93.731.4953.0](#) [PV05-5,08-K](#) [PVP02-5,00](#) [PVP04-3,50](#) [PVS02-5,00](#) [1-1986160-3](#) [H-10](#) [1546228-5](#) [ELFH09150](#) [ELFH16150](#) [ELFP03110](#) [ELFT06250](#) [ELFT07250](#) [ELVF09400](#) [ELVP03100](#) [ELXH03100](#) [ELXH071G0E](#) [ELXP041G0](#) [ELXT046G0](#) [1700101](#) [1700410](#) [1700425](#) [1703176](#) [1703243](#) [1705229](#) [1710175](#) [1714537](#) [1717806](#) [1719600](#) [1728941](#) [1729386](#)