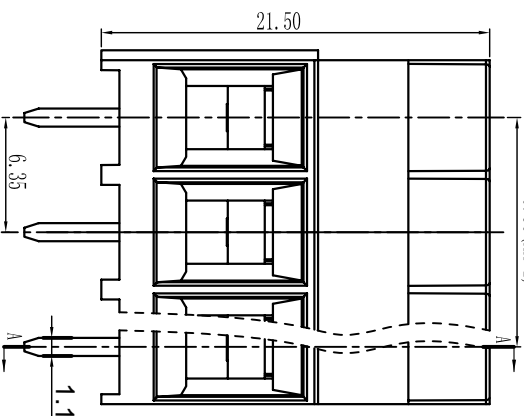
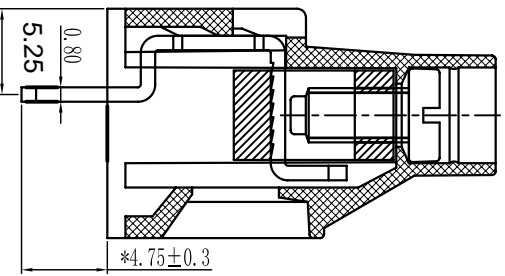
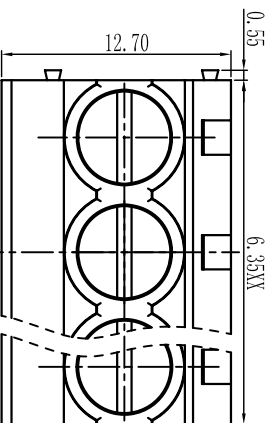
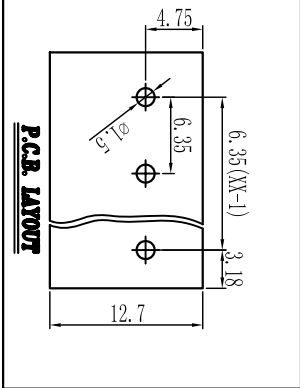




Cixi Dibo Electronics Co., LTD

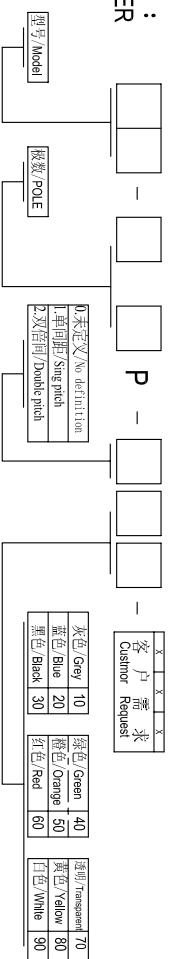
产品规格书
product specification



TOLERANCES EXCEPT AS NOTED

SECTION-A-A

订购方式：
HOW TO ORDER



电气性能/Electrical
 参考标准/Standard: UL IEC
 额定电压/Rated voltage: 300V 250V
 额定电流/Rated current: 30A 35A
 接触电阻/Contact resistance: 20mΩ
 使用线径/Wire range: 26-10AWG 4.0mm²
 耐电压/Withstanding voltage: AC2000V/1Min
 绝缘电阻/Insulation resistance: 500MΩ/DC500V

机械性能/Mechanical
 温度范围/Temp.Range: -40°C+105°C
 扭矩/Torque: 0.5Nm (4.5lb·in)
 剥线长度/Strip length: 6-7mm

尺寸/Dimensions
 间距/Pitch: 6.35mm
 极数/Poles: 2P-24P

材质及电镀/Material
 塑件/Housing: P166, U194V-0
 螺丝/Screws: M3.0, steel Zinc plated
 方块/Cage: Brass, Ni plated
 焊脚/Pin header: Brass, Snle plated

Linear dimension	fillet	chamfer	短角边	倒角	公差	公差	公差	公差
variable range	over 6 to 120	over 6 to 120	over 10 to 50	over 10 to 50	±0.1	±0.2	±0.3	±0.5
tolerance	±0.1	±0.2	±0.3	±0.5	±0.1	±0.2	±0.3	±0.5

单位/UNITS	mm	尺寸/SIZE	A4	比例/SCALE	比例
Cixi Dibo Electronics Co., LTD					
名称/NAME					DB910-6.35

X-ON Electronics

Largest Supplier of Electrical and Electronic Components

Click to view similar products for [Fixed Terminal Blocks](#) category:

Click to view products by [DIBO](#) manufacturer:

Other Similar products are found below :

[00175550202](#) [MBE-1512](#) [MBE-1520](#) [MBE-154](#) [MBE-156](#) [MBES-1510](#) [MBES-153](#) [MBES-156](#) [MH-2512](#) [MHE-132](#) [MHE-133](#) [MHE-163](#)
[MI-254 \(35\)](#) [MI-272](#) [8739](#) [880507](#) [880508](#) [MPT-275](#) [1546551-6](#) [ELM023100](#) [ELM10110G](#) [ELVD12100](#) [BA311TU](#) [BA411SU](#) [MV-152](#)
[MV-253/NCNOC](#) [MV-254-D](#) [MV-255](#) [MV-462](#) [MV-472](#) [MV-493](#) [MVE-252](#) [MVE-253](#) [MVE-258](#) [MVE-273](#) [MVEB-153](#) [1700096](#)
[1702246](#) [1705142](#) [1712417](#) [1713020](#) [1713088](#) [1776118-2](#) [1790852](#) [1-796689-8](#) [1-796692-6](#) [1800001](#) [1800114](#) [1823215](#) [1838462](#)