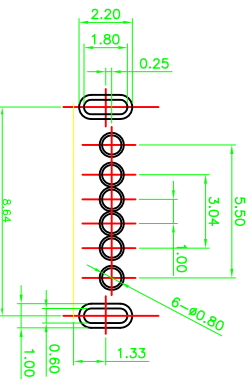
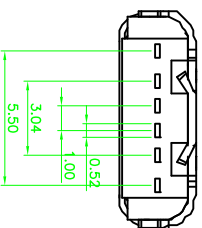
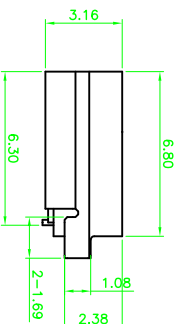
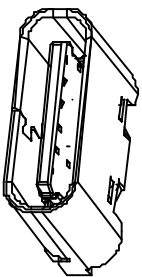
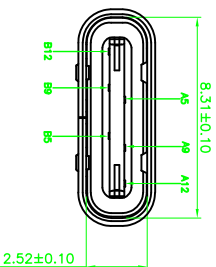
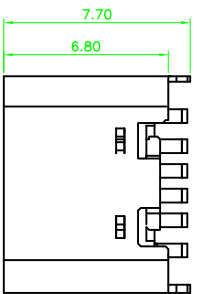


RoHS



RECOMMENDED PCB LAYOUT  
TOLERANCE UNSPECIFIED ±0.05mm

1	2	3	4	5	6	7	8	9	10
						MAPX	MODIFICATION	DRW	DATE

NOTE:

1. MATERIAL SPECIFICATION
  1. HOUSING : HIGH TEMPERATURE RESISTANT PLASTIC U194 V40
  2. CONTACTS : COPPER ALLOY
  3. MID PLATE : STAINLESS STEEL
  4. FRONT SHELL : STAINLESS STEEL
  2. PLATING SPECIFICATION
    - 2-1. CONTACTS : Ni 50μ " MIN. UNDER PLATED OVER ALL.
    - 2-2. FRONT SHELL . SEE TABLE1
    - 2-3 SHIELD PLATE & EMI PLATE CLEAR ONLY
  3. MECHANICAL PERFORMANCE.
    - 3-1. INSERTION FORCE : 0.5~2.0kgf.
    - 3-2. REMOVAL FORCE . 0.8kgf~2.0Kgf
    - 3-3 DURABILITY : 5000 CYCLES .
  4. ELECTRICAL PERFORMANCE ,
    - 4-1 . CURRENT RATING : 3 . 0A VOLTAGE RATING . 5.0V
    - 4-2 . LLCR .
- VBUS GND PINS AND OTHER PINS : 40m / PIN MAX  
SHIELD : 50mg / MAX  
LLCR MAX. CHANGE OF ALL PINS : 10m Ω
- 4.3 . INSULATION RESISTANCE : 100MΩ MIN
  - 4.4 DIELECTRIC WITHSTAND VOLTAGE , AC 100V FOR 1 MINUTE .
  - 5 . ENVIRONMENTAL PERFORMANCE
  - OPERATING TEMPERATURE : -25C . + 85C
  - 6 . IR REFLOW
- THE PEAK TEMPERATURE ON THE BOARD SHALL BE MAINTAINED FOR 10 SECONDS AT 260C .

B12	GND
B9	VBUS
B5	CC2
A5	CC1
A9	VBUS
A12	GND
PIN	SIGNAL NAME

产品图  
公差一览表

TOLERANCE UNLESS OTHERWISE	X.	X.	X.
±0.25	±0.20	±0.15	±0.10
±5°	±2°	±1°	±0.5°
XXX	.XX	.XXX	.XXX

深圳市精拓金电子有限公司  
Shenzhen Jing Tuo Jin Electronics Co., Ltd.

单位	比例	日期	制图	审核	核准	制图料号	产品名称	角法	版本
mm	1:1	2016-06-09	许榕强	郭治富	黄国荣	TYPE-C 6PIN立式插板DIP			
SCALE	DATE	DRAWING	CHKD	APPD	VIEW				

1 2 3 4 5 6 7 8 9 10

Autodesk 教育版产品制作

## X-ON Electronics

Largest Supplier of Electrical and Electronic Components

*Click to view similar products for [USB Connectors](#) category:*

*Click to view products by [Jing](#) manufacturer:*

Other Similar products are found below :

[10033527-N3112MLF](#) [17-210561](#) [GMCB05B11124H1EU](#) [17-200931](#) [65-647-8-BK-BU](#) [690-010-295-484](#) [73725-1191BLF](#) [950](#) [E8144-B01021-L](#) [A-USB A-LP-SMT-C](#) [A-USB B-TOP-C](#) [MUSBA511N5](#) [MUSBB15131](#) [MUSBC111M5](#) [MUSBD11135](#) [217450-1](#) [CA 6 W LD](#)  
[896-30-004-00-000000](#) [KUSBVX-BS1N-W30](#) [KUSBX-AP-KIT-SCBLK](#) [KUSBX-AS2N-W](#) [KUSBX-SMT2AP1S-W](#) [KUSBX-SMTAS1NBTR](#) [KUSBX-SMTBS1NBTR](#) [30-498-6](#) [SK-60A-2](#) [17-200261](#) [17-210051](#) [1734082-1](#) [FK-37-32SL](#) [30-1574](#) [30-470](#) [30-489](#) [30-541](#) [30-572-3](#) [30-9503](#) [M9177/2-1](#) [MAB 5 S](#) [MIKROE-1451](#) [33UBBR-04SW11R](#) [USBFTV2PEM2G](#) [USBFTVC6ZN](#) [USBFTVSCCG](#)  
[KUSBX-AS2N-W30](#) [KUSBX-SLAS1N-W](#) [KUSBX-SLAS1N-W30](#) [1-1734084-2](#) [E8110-001-01](#) [MUSBC11135](#) [NK-27-32SL](#)