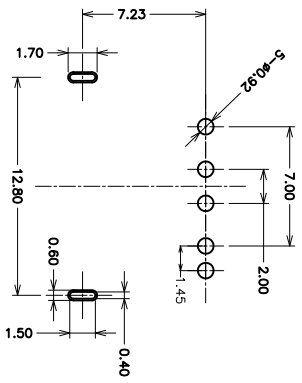
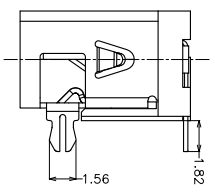
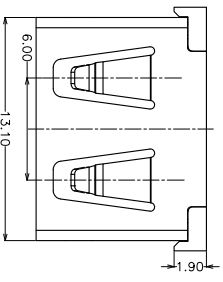
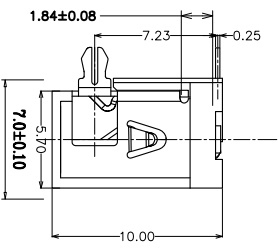
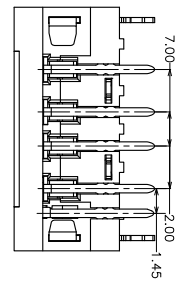
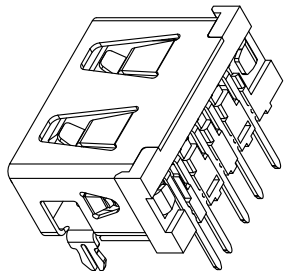


ROHS

1 2 3 4 7 8 9 10

Autodesk 教育版产品制作

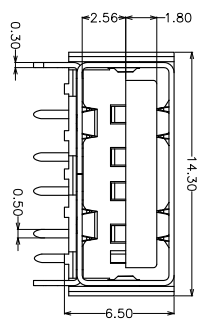
MAPX	MODIFICATION	DRW	DATE



RECOMMEND P. C. B LAYOUT
TOLERANCE: ±0.10

NOTES:

- MATERIAL SPECIFICATION:
 - INSULATION MATERIAL: THERMOPLASTIC HALOGENFREE.
 - SHELL: COPPER ALLOY T: 0.30mm
PLATING: NICKEL
 - TERMINAL: COPPER ALLOY T: 0.25mm
PLATING: GOLD/TIN PLATED;
- ELECTRICAL CHARACTERISTIC:
 - INSULATION RESISTANCE: 1000MΩ MIN;
 - CONTACT RESISTANCE: 30mΩ MAX;
 - WITHSTANDING VOLTAGE: 500V AC;
- MECHANICAL CHARACTERISTICS:
 - INSERTION FORCE: 3.57kgf Max;
 - EXTRACTION FORCE: 1.02kgf Min;



产品图
PRODUCT CHART DWG

公差一览表
深圳市精拓金电子有限公司
Shenzhen Jing Tuo Jin Electronics Co., Ltd.

公差一览表	单位	MM	制图	许榕强	制图料号	
TOLERANCE UNLESS OTHERWISE	UNITS	MM	DRAWING	审核	PRODUCT PART NO.	
X ±0.35 X ±5.°	SCALE	1:1	CHKD	郭治富	PRODUCT NO.	USB A/F DIT90° 短体5P10.00mm
X ±0.20 X ±2.°	DATE	2016-09-09	APPD	核准	角法	
XX ±0.15 XX ±1.°				黄国荣	版本	
XXX ±0.05 .XXX ±0.5°					VER	A0

1 2 3 4 7 8 9 10

Autodesk 教育版产品制作

X-ON Electronics

Largest Supplier of Electrical and Electronic Components

Click to view similar products for [USB Connectors](#) category:

Click to view products by [Jing](#) manufacturer:

Other Similar products are found below :

[10033527-N3112MLF](#) [17-210561](#) [GMCB05B11124H1EU](#) [17-200931](#) [65-647-8-BK-BU](#) [690-010-295-484](#) [73725-1191BLF](#) [950](#) [E8144-B01021-L](#) [A-USB A-LP-SMT-C](#) [A-USB B-TOP-C](#) [MUSBA511N5](#) [MUSBB15131](#) [MUSBC111M5](#) [MUSBD11135](#) [217450-1](#) [CA 6 W LD](#) [896-30-004-00-000000](#) [KUSBVX-BS1N-W30](#) [KUSBX-AP-KIT-SCBLK](#) [KUSBX-AS2N-W](#) [KUSBX-SMT2AP1S-W](#) [KUSBX-SMTAS1NBTR](#) [KUSBX-SMTBS1NBTR](#) [30-498-6](#) [SK-60A-2](#) [17-200261](#) [17-210051](#) [1734082-1](#) [FK-37-32SL](#) [30-1574](#) [30-470](#) [30-489](#) [30-541](#) [30-572-3](#) [30-9503](#) [M9177/2-1](#) [MAB 5 S](#) [MIKROE-1451](#) [33UBBR-04SW11R](#) [USBFTV2PEM2G](#) [USBFTVC6ZN](#) [USBFTVSCCG](#) [KUSBX-AS2N-W30](#) [KUSBX-SLAS1N-W](#) [KUSBX-SLAS1N-W30](#) [1-1734084-2](#) [E8110-001-01](#) [MUSBC11135](#) [NK-27-32SL](#)