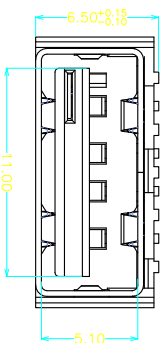
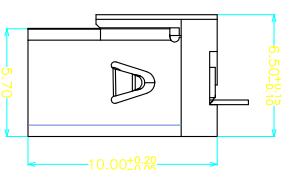
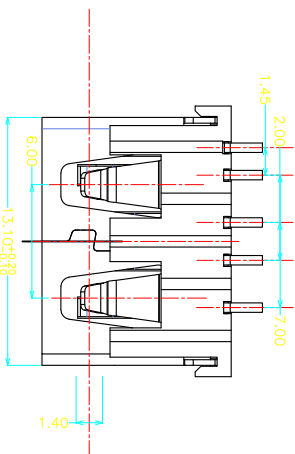
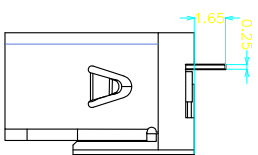
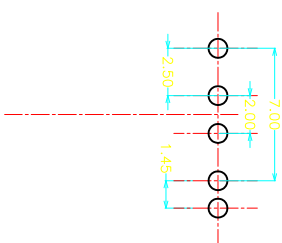
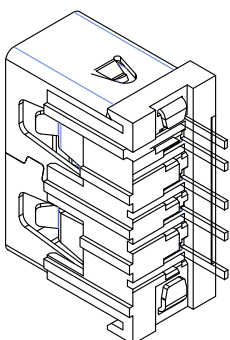
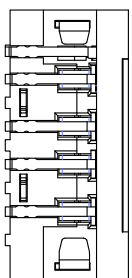


ROHS



RECOMMEND P. C. B LAYOUT
TOLERANCE: ±0.10

NOTES:

1. MATERIAL SPECIFICATION:

1) INSULATION MATERIAL: THERMOPLASTIC HALOGENFREE.

2) SHELL: COPPER ALLOY T: 0.30mm

PLATING: NICKEL

3) TERMINAL: COPPER ALLOY T: 0.25mm

PLATING: GOLD/TIN PLATED;

2. ELECTRICAL CHARACTERISTIC:

1) INSULATION RESISTANCE: 1000M Ω MIN;

2) CONTACT RESISTANCE: 30m Ω MAX;

3) WITHSTANDING VOLTAGE: 500V AC;

3. MECHANICAL CHARACTERISTICS:

1) INSERTION FORCE: 3.57kgf Max;

2) EXTRACTION FORCE: 1.02kgf Min;

产品图

PRODUCT CHART DWG

公差一览表

深圳市精拓金电子有限公司
Shenzhen Jing Tuo Jin Electronics Co., Ltd.

TOLERANCE	UNLESS OTHERWISE	公差
X	±0.35	X
X	±0.20	X
XX	±0.15	XX
XXX	±0.05	XXX

单位	MM	制图	许榕强	制图料号
UNITS	MM	DRAWING	许榕强	PRODUCT PART NO.
比例	1:1	审核	郭治富	产品名称
SCALE	1:1	CHKD	郭治富	PRODUCT NO.
日期	2016-09-09	核准	黄国荣	角法
DATE	2016-09-09	APRD	黄国荣	VER

MAPX	MODIFICATION	DRW	DATE

X-ON Electronics

Largest Supplier of Electrical and Electronic Components

Click to view similar products for [USB Connectors](#) category:

Click to view products by [Jing](#) manufacturer:

Other Similar products are found below :

[10033527-N3112MLF](#) [17-210561](#) [GMCB05B11124H1EU](#) [17-200931](#) [65-647-8-BK-BU](#) [690-010-295-484](#) [73725-1191BLF](#) [950](#) [E8144-B01021-L](#) [A-USB A-LP-SMT-C](#) [A-USB B-TOP-C](#) [MUSBA511N5](#) [MUSBB15131](#) [MUSBC111M5](#) [MUSBD11135](#) [217450-1](#) [CA 6 W LD](#)
[896-30-004-00-000000](#) [KUSBVX-BS1N-W30](#) [KUSBX-AP-KIT-SCBLK](#) [KUSBX-AS2N-W](#) [KUSBX-SMT2AP1S-W](#) [KUSBX-SMTAS1NBTR](#) [KUSBX-SMTBS1NBTR](#) [30-498-6](#) [SK-60A-2](#) [17-200261](#) [17-210051](#) [1734082-1](#) [FK-37-32SL](#) [30-1574](#) [30-470](#) [30-489](#) [30-541](#) [30-572-3](#) [30-9503](#) [M9177/2-1](#) [MAB 5 S](#) [MIKROE-1451](#) [33UBBR-04SW11R](#) [USBFTV2PEM2G](#) [USBFTVC6ZN](#) [USBFTVSCCG](#)
[KUSBX-AS2N-W30](#) [KUSBX-SLAS1N-W](#) [KUSBX-SLAS1N-W30](#) [1-1734084-2](#) [E8110-001-01](#) [MUSBC11135](#) [NK-27-32SL](#)