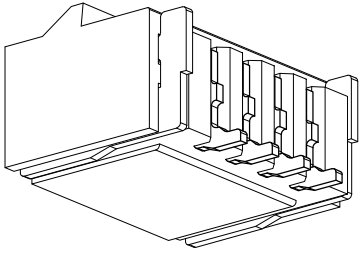
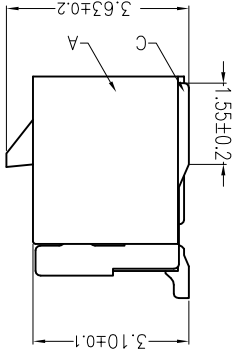
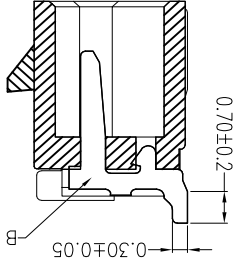
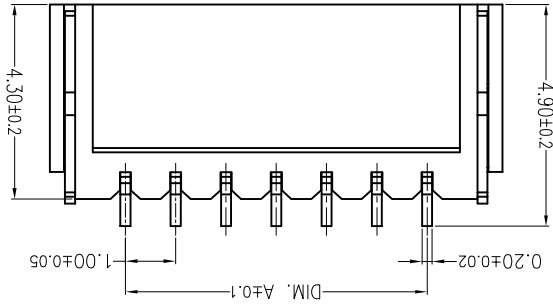
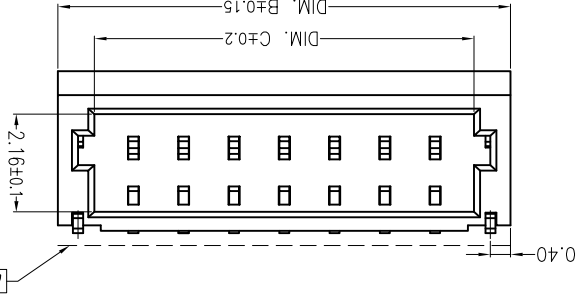
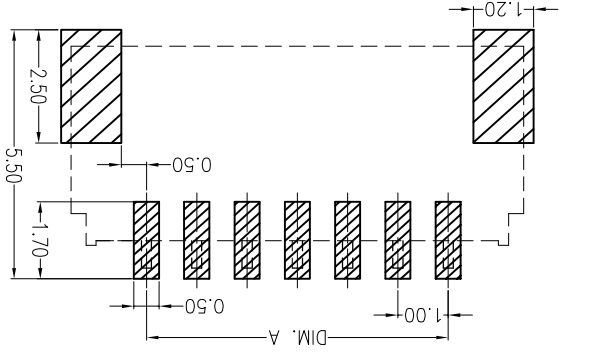


For and on behalf of
XKB INDUSTRIAL PRECISION CO., LIMITED
 香港星坤工業精密有限公司

Recommend PCB Layout



PART NO	Material	Solder Tab(s)	Finish(Pin And Solder Tabs)	Suitable XKB Terminal
X1002WRS-XXL-HF-LPSN	PA46 UL 94V-0	Brass	Bright tin plating	X 1002H-L

Poles	Dimensions(mm)		Poles	Dimensions(mm)	
	A	B		A	B
02	1.00	4.00	10	9.00	12.00
03	2.00	5.00	11	10.00	13.00
04	3.00	6.00	12	11.00	14.00
05	4.00	7.00	13	12.00	15.00
06	5.00	8.00	14	13.00	16.00
07	6.00	9.00	15	14.00	17.00
08	7.00	10.00	16	15.00	18.00
09	8.00	11.00	20	19.00	22.00
					20.50

Series No.
 ① X1002 W R S-XX L-LPXX XX
 ② ③ ④ ⑤ ⑥ ⑦ ⑧ ⑨

- ① Voltage rating: 50V AC / DC
- ② Current rating: 1A AC / DC
- ③ Withstanding voltage: 500V AC/minute
- ④ Temperature range: -25°C~+85°C
- ⑤ Insulation resistance: ≥100MΩ
- ⑥ Contact resistance: ≤20mΩ
- ⑦ After environmental testing: ≤40mΩ
- ⑧ Category: W-water
- ⑨ Welding Board Angle: R-90°
- ⑩ Welding Way: S-SMT
- ⑪ Row No.-Pin No.: XX-02P~20P
- ⑫ Plug the Pin & Special No.: L-With Lock
- ⑬ Material: 6T-PA6T 94V-0; LP-LCP 94V-0;
- ⑭ 9T-PA9T 94V-0
- ⑮ Planting Category: SN-Bright Tin plating
- ⑯ Color: Blank-natural color

MARK	DESCRIPTION	DATE	REVISIONS	APPROVED	REVISOR	DATE	REVISIONS
△ X							
△ X							
△ X							

UNSPECIFIED TOLERANCES	APPROVED	REVISOR	DATE	REVISIONS	APPROVED	REVISOR	DATE	REVISIONS
±5°								
ANGULAR								
±0.2								
L ≤ 4								
4 < L ≤ 16								
16 < L ≤ 63								
L > 63								

DATE	SCALE: N/A	MODEL TYPE: X1002WRS-XXL-HF-LPSN	DATE	SCALE: N/A	MODEL TYPE: X1002WRS-XXL-HF-LPSN
DATE	VIEW:	PART NO.:	DATE	VIEW:	PART NO.:
DATE	UNIT: mm	DWG NO.:	DATE	UNIT: mm	DWG NO.:
DATE	SIZE: A4		DATE	SIZE: A4	
REVISION	SHEET	WEIGHT	REVISION	SHEET	WEIGHT
A0	1/1	1.0g	A0	1/1	1.0g

XKB INDUSTRIAL PRECISION CO., LIMITED

X-ON Electronics

Largest Supplier of Electrical and Electronic Components

Click to view similar products for [Headers & Wire Housings](#) category:

Click to view products by [XKB](#) manufacturer:

Other Similar products are found below :

[95000-104TRLF](#) [10135584-644402LF](#) [DF62W-EP2022PCA](#) [95000-106TRLF](#) [DF62W-2022SCA](#) [DF62W-EP2022PC](#) [2203348](#) [DF62W-2022SC](#) [1084018](#) [1029039](#) [1084017](#) [802-10-012-10-002000](#) [1112640](#) [1112639](#) [891-007-9SS-BST1T](#) [000-34000](#) [0008550134](#) [0009482033](#) [0009507031](#) [57102-F02-18ULF](#) [57102-S06-03LF](#) [57202-S52-04LF](#) [PCN6-15S-2.5E](#) [0039019024](#) [58102-G61-06LF](#) [582553-1](#) [0009485154](#) [0009508121](#) [0022285053](#) [0050291907](#) [018731A](#) [LY20-4P-DT1-P1E-BR](#) [02.125.8002.8](#) [60101931](#) [60598-1 \(Cut Strip\)](#) [M1625-3R/100](#) [61062-3](#) [61082-181009](#) [CSU011177004](#) [636-1427](#) [638009-1](#) [641938-9](#) [641991-4](#) [644168-1](#) [644827-2](#) [647662-1](#) [65039-019ELF](#) [65692-001LF](#) [65781-018](#) [65781-047](#)