

REVISIONS  
*Unauthorized Signatures*

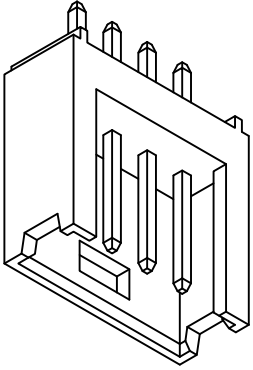
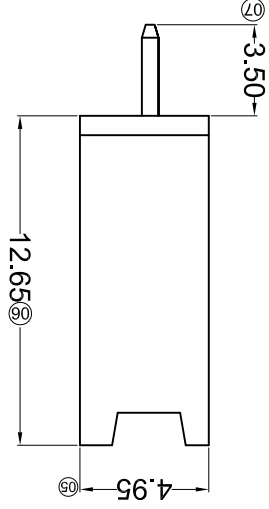
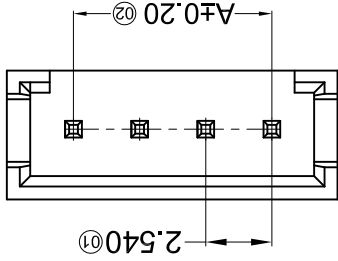
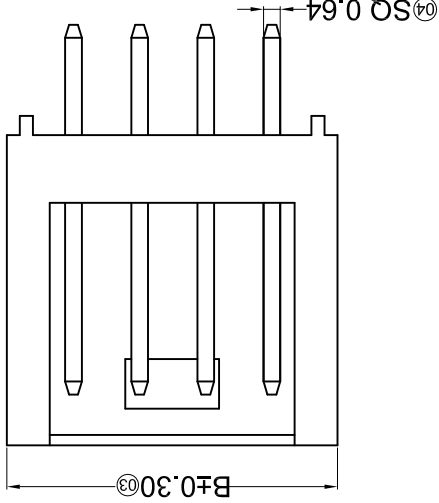
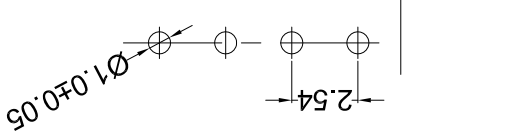
MARK	DESCRIPTION	DATE	REVISED	APPROVED	UNSPECIFIED TOLERANCES
△ X					L > 63 ± 0.5
△ X					16 < L ≤ 63 ± 0.4
△ X					4 < L ≤ 16 ± 0.3
△ X					L ≤ 4 ± 0.2
					ANGULAR ± 5°

For and on behalf of  
**KKB INDUSTRIAL PRECISION CO., LIMITED**  
香港星坤工業精密有限公司

**KKB INDUSTRIAL PRECISION CO., LIMITED**

MODEL TYPE	SCALE: N/A	DATE		DNSD
X2530WV-XX-PTXX		VIEW:	DATE	DWN
PART NO.:		UNIT: mm	DATE	CHKD
2.54mm Crimp Style Connectors	SIZE: A4			APPD
WEIGHT	SHEET	REVISION		
1.0g	1/1	A0		

Recommended P.C.B Layout  
General Tolerance ±0.05



PART NO	Material	Material(Pin)	Finish(Pin)	Suitable XKB Terminal
X2530WV-XX-PTV01	PBT UL 94V-0	Brass	Gold-Flash	X2530H
X2530WV-XX-PTSN	PBT UL 94V-0	Brass	Tin-Plated	

Poles	Dimensions(mm)		Poles	A	B
	A	B			
02	2.54	7.70	13	30.48	35.60
03	5.08	10.20	14	33.02	38.10
04	7.62	12.70	15	35.56	40.70
05	10.16	15.20	16	38.10	43.20
06	12.70	17.80	17	40.64	45.70
07	15.24	20.30	18	43.18	48.20
08	17.78	22.90	19	45.72	50.70
09	20.32	25.40	20	48.26	53.20
10	22.86	28.00	22	53.34	58.50
11	25.40	30.50			
12	27.94	33.10			

- ① Series No.
  - ② Category: W-water
  - ③ Welding Board Angle: V-Stright 180°
  - ④ Welding Way: Blank-DIP
  - ⑤ Row No.-Pin No.: XX-Single row (02-22P)
  - ⑥ Special NO.:
  - ⑦ Material: PT-PBT 94V-0
  - ⑧ Plating Category:
  - ⑨ V01: All Gold-Flash ; SN-Bright tin plating
  - ⑩ Color: Blank-natural color
- X2530 W V XX- XX X-PTSN XX  
① ② ③ ④ ⑤ ⑥ ⑦ ⑧ ⑨

- Specifications :
- Voltage rating: 250V AC / DC
  - Current rating: 3A AC / DC
  - Withstanding voltage: 800V AC/minute
  - Temperature range: -25°C~+85°C
  - Insulation resistance: ≥1000MΩ
  - Contact resistance: ≤10mΩ
  - After environmental testing: ≤20mΩ

## X-ON Electronics

Largest Supplier of Electrical and Electronic Components

*Click to view similar products for [Headers & Wire Housings](#) category:*

*Click to view products by [XKB](#) manufacturer:*

Other Similar products are found below :

[95000-104TRLF](#) [10135584-644402LF](#) [DF62W-EP2022PCA](#) [95000-106TRLF](#) [DF62W-2022SCA](#) [DF62W-EP2022PC](#) [2203348](#) [DF62W-2022SC](#) [1084018](#) [1029039](#) [1084017](#) [802-10-012-10-002000](#) [1112640](#) [1112639](#) [891-007-9SS-BST1T](#) [000-34000](#) [0008550134](#) [0009482033](#) [0009507031](#) [57102-F02-18ULF](#) [57102-S06-03LF](#) [57202-S52-04LF](#) [PCN6-15S-2.5E](#) [0039019024](#) [58102-G61-06LF](#) [582553-1](#) [0009485154](#) [0009508121](#) [0022285053](#) [0050291907](#) [018731A](#) [LY20-4P-DT1-P1E-BR](#) [02.125.8002.8](#) [60101931](#) [60598-1 \(Cut Strip\)](#) [M1625-3R/100](#) [61062-3](#) [61082-181009](#) [CSU011177004](#) [636-1427](#) [638009-1](#) [641938-9](#) [641991-4](#) [644168-1](#) [644827-2](#) [647662-1](#) [65039-019ELF](#) [65692-001LF](#) [65781-018](#) [65781-047](#)