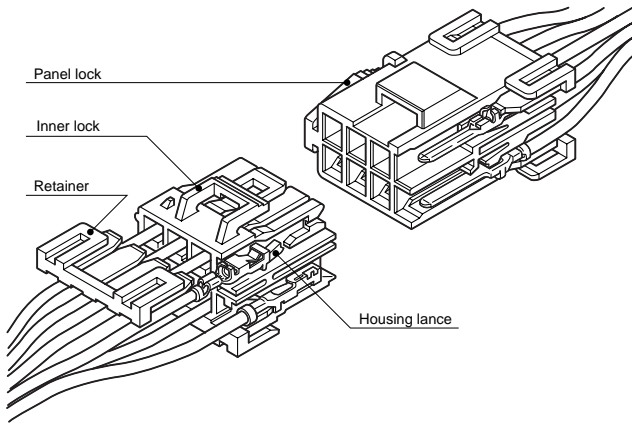


# YL CONNECTOR

## 4.5mm pitch/Disconnectable Crimp style Wire-to-wire connectors



**The retainer features added protection against non-insertion or disconnection.**

- Housing lance
- Secondary retainers
- Inner-housing lock
- Panel lock construction

### Standards

- Recognized E60389
- Certified LR20812
- R9351052

### Specifications

- Current rating: 10 A AC, DC max. (7 A when retainers are mounted)
- Voltage rating: 300 V AC, DC max.
- Temperature range: -25°C to +90°C (including temperature rise in applying electrical current)
- Contact resistance: Initial value/ 7 mΩ max. After environmental tests/ 10 mΩ max.
- Insulation resistance: 1,000 MΩ min.
- Withstanding voltage: 1,500 VAC/minute
- Applicable wire: AWG #26 to #16  
0.13 to 1.25 mm<sup>2</sup>
- Applicable panel thickness: 0.7 to 2.0 mm

Note: The current rating varies depending on the number of circuits and the wire size used in each connector. The table below lists the current rating as a function of the number of circuits and the wire size.

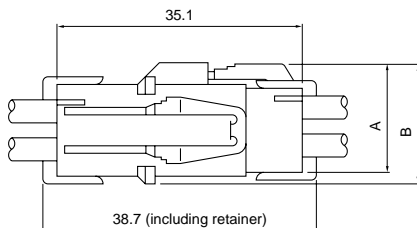
Current unit: A

Circuits	Wire size (AWG)					
	#16	#18	#20	#22	#24	#26
1	10	7	5	4	3	2
2	10	7	5	4	3	2
3	9	6	4	4	3	2
4	9	6	4	4	3	2
6	8	5	3	3	2	2
8	7	4	3	3	2	2
9	6	4	3	3	2	2
12	6	3	2	2	2	2
15	5	3	2	2	2	1
16	5	3	2	2	2	1
21	5	3	2	2	2	1

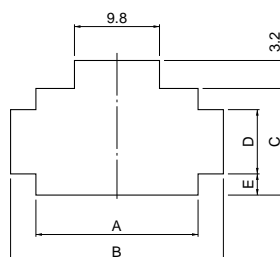
Note: Secondary retainers cannot be used with AWG #16 wires.

- \* Refer to "General Instruction and Notice when using Terminals and Connectors" at the end of this catalog.
- \* Contact JST for details.
- \* Compliant with RoHS.

### Panel Layout and Assembly layout



Type	Circuits	Dimensions (mm)	
		A	B
Single row	2 · 3	9.5	10.8
2-row	4 · 6 · 8 · 12 · 16	15.3	16.6
3-row	9 · 12 · 15 · 21	20.5	21.8



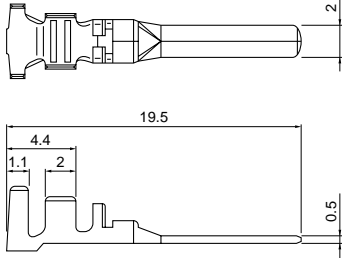
Circuits	Receptacle housing Model No.	Panel thickness (mm)	0.7 to 2.0			0.7 to 0.8		0.9 to 1.3		1.4 to 2.0	
			A	B	C	D <sup>±0.1</sup>	E <sup>±0.1</sup>	D <sup>±0.1</sup>	E <sup>±0.1</sup>	D <sup>±0.1</sup>	E <sup>±0.1</sup>
2	YLR-02V		10.7	16.8	7.1	4.4	1.35	5.0	1.05	5.6	0.75
3	YLR-03V		15.3	21.3	7.1	4.4	1.35	5.0	1.05	5.6	0.75
4	YLR-04V		10.7	16.8	12.9	7.1	2.9	7.7	2.6	8.3	2.3
6	YLR-06V		15.3	21.3	12.9	7.1	2.9	7.7	2.6	8.3	2.3
8	YLR-08V		19.8	25.8	12.9	7.1	2.9	7.7	2.6	8.3	2.3
9	YLR-09V		15.3	21.3	18.2	7.1	5.55	7.7	5.25	8.3	4.95
12	YLR-12V		19.8	25.8	18.2	7.1	5.55	7.7	5.25	8.3	4.95
	YLR-12VA		28.9	34.8	12.9	7.1	2.9	7.7	2.6	8.3	2.3
15	YLR-15V		24.4	30.3	18.2	7.1	5.55	7.7	5.25	8.3	4.95
16	YLR-16V		37.9	43.8	12.9	7.1	2.9	7.7	2.6	8.3	2.3
21	YLR-21V		33.5	39.3	18.2	7.1	5.55	7.7	5.25	8.3	4.95

- Note: 1. Punch holes in the panel according to the figures and table shown above. Burrs must be removed.
2. The strength of the panel must be considered when punching two or more holes.
3. The connector must be inserted from the same side as the hole is punched.

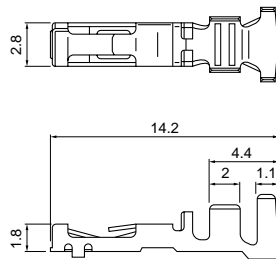
# YL CONNECTOR

## Contact

### Pin contact



### Socket contact



Model No.		Applicable wire		Insulation O.D. (mm)	Q'ty/reel
Pin contact	Socket contact	mm <sup>2</sup>	AWG #		
<b>SYM-01T-P0.5A</b>	<b>SYF-01T-P0.5A</b>	0.13~0.5	26~20	1.3~2.5	4,000 (SYM-01T-P0.5A) 5,000
<b>SYM-41T-P0.5A</b>	<b>SYF-41T-P0.5A</b>	0.5 ~1.25	20~16	2.0~3.4	
		*0.3+0.3~ 0.5+0.5	*22+22~ 20+20	*1.5+1.5~ 2.0+2.0	

### Material and Finish

Phosphor bronze, tin-plated (reflow treatment)

### RoHS compliance

Note: 1. Contact JST for special products.

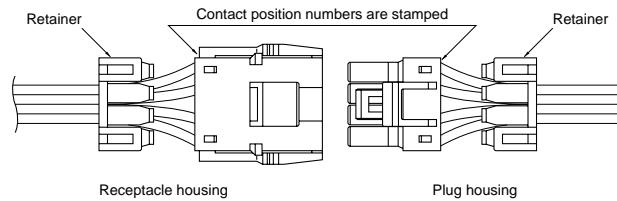
2. Retainers cannot be used with electric wire whose insulation O.D. exceeds 2.7mm and AWG #16.

3. \*Marked products are not approved by TÜV.

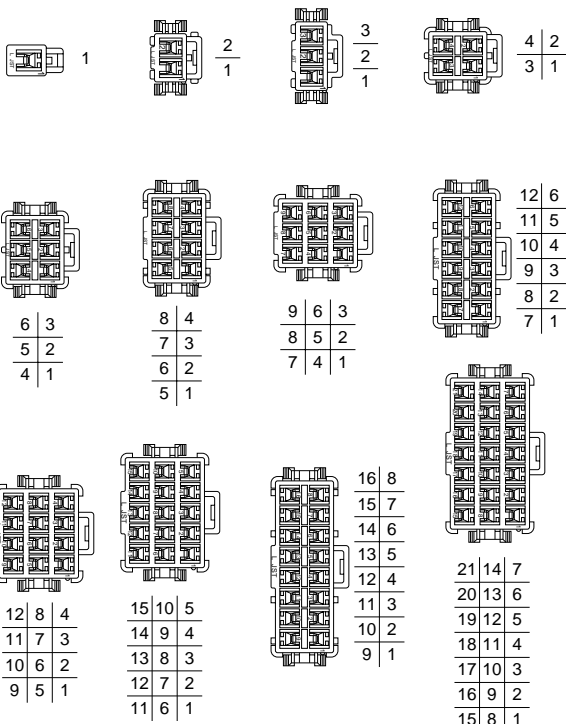
Contact	Crimping machine	Applicator		
		Crimp applicator	Dies	Crimp applicator with dies
<b>SYM-01T-P0.5A</b>	AP-K2N	MKS-L	MK/SYF/M-01-05	APLMK SYF/M01-05
<b>SYF-01T-P0.5A</b>		*MKS-SC-YL	SC/SYF/M-01-05	APLSC SYF/M01-05
<b>SYM-41T-P0.5A</b>		MKS-L	MK/SYF/M-41-05	APLMK SYF/M41-05
<b>SYF-41T-P0.5A</b>		*MKS-SC-YL	SC/SYF/M-41-05	APLSC SYF/M41-05

Note: \*Strip-crimp applicator

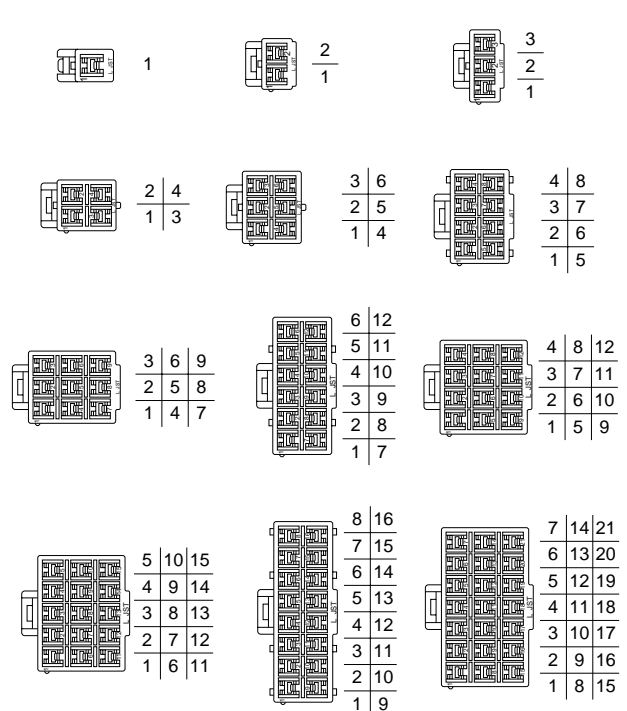
## Contact position location numbers



### Receptacle housing



### Plug housing



# YL CONNECTOR

## Housing

Material: Housing...PA 66, UL94V-0, white  
Retainer...Glass-filled PA 66, UL94V-0, ivory

Circuits	Voltage rating	Current rating	Receptacle housing (for pin contact)	Plug housing (for socket contact)	Retainer
1	300V	7A (10A)	<b>YLR-01VF</b> 	<b>YLP-01V</b> 	<b>YLS-01V</b> 
2	300V	7A (10A)	<b>YLR-02V</b> 	<b>YLP-02V</b> 	<b>YLS-02V</b> 
			<b>YLR-02VF</b> 		
3	300V	6A (9A)	<b>YLR-03V</b> 	<b>YLP-03V</b> 	<b>YLS-03V</b> (commonly used for 3-circuit housing and 6-circuit housing) 
			<b>YLR-03VF</b> 		

### RoHS compliance

Note: 1. Current rating in parentheses is for use with AWG #16 wire. (Retainers are not mountable.)  
2. Contact JST for Glow Wire compliant connectors.

# YL CONNECTOR

## Housing

Material: Housing...PA 66, UL94V-0, white Retainer...Glass-filled PA 66, UL94V-0, ivory

Circuits	Voltage rating	Current rating	Receptacle housing (for pin contact)	Plug housing (for socket contact)	Retainer
4	300V	6A (9A)	<b>YLR-04V</b> 	<b>YLP-04V</b> 	<b>YLS-02V</b> 
		500	<b>YLR-04VF</b> 		
6	300V	5A (8A)	<b>YLR-06V</b> 	<b>YLP-06V</b> 	<b>YLS-03V</b> (commonly used for 3-circuit housing and 6-circuit housing) 
		500	<b>YLR-06VF</b> 		
8	300V	4A (7A)	<b>YLR-08V</b> 	<b>YLP-08V</b> 	<b>YLS-08V</b> 
		250	<b>YLR-08VF</b> 		
9	300V	4A (6A)	<b>YLR-09V</b> 	<b>YLP-09V</b> 	<b>YLS-09V</b> —
			250	500	—

### RoHS compliance

Note: 1. Current rating in parentheses is for use with AWG #16 wire. (Retainers are not mountable.)

2. Contact JST for Glow Wire compliant connectors.

# YL CONNECTOR

## Housing

Material: Housing...PA 66, UL94V-0, white Retainer...Glass-filled PA 66, UL94V-0, ivory

Circuits	Voltage rating	Current rating	Receptacle housing (for pin contact)	Plug housing (for socket contact)	Retainer
12	300V	3A (6A)	<b>YLR-12VA</b> 	<b>YLP-12VA</b> 	<b>YLS-12V</b> 
			Q'ty/ bag	200	Q'ty/ bag
15	300V	3A (5A)	<b>YLR-12V</b> 	<b>YLP-12V</b> 	—
			Q'ty/ bag	200	Q'ty/ bag
15	300V	3A (5A)	<b>YLR-15V</b> 	<b>YLP-15V</b> 	—
			Q'ty/ bag	200	Q'ty/ bag
16	300V	3A (5A)	<b>YLR-16V</b> 	<b>YLP-16V</b> 	<b>YLS-16V</b> 
			Q'ty/ bag	100	Q'ty/ bag

### RoHS compliance

Note: 1. Current rating in parentheses is for use with AWG #16 wire. (Retainers are not mountable.)  
 2. Contact JST for Glow Wire compliant connectors.

# YL CONNECTOR

## Housing

Material: Housing...PA 66, UL94V-0, white

Circuits	Voltage rating	Current rating	Receptacle housing (for pin contact)		Plug housing (for socket contact)		Retainer	
			YLR-21V	Q'ty/ bag	YLP-21V	Q'ty/ bag		Q'ty/ bag
21	300V	3A (5A)		100		200	—	—

### RoHS compliance

Note: 1. Current rating in parentheses is for use with AWG #16 wire. (Retainers are not mountable.)

2. Contact JST for Glow Wire compliant connectors.

## X-ON Electronics

Largest Supplier of Electrical and Electronic Components

*Click to view similar products for [Headers & Wire Housings](#) category:*

*Click to view products by [JST](#) manufacturer:*

Other Similar products are found below :

[95000-104TRLF](#) [10135584-644402LF](#) [DF62W-EP2022PCA](#) [95000-106TRLF](#) [DF62W-2022SCA](#) [DF62W-EP2022PC](#) [2203348](#) [DF62W-2022SC](#) [1084018](#) [1029039](#) [1084017](#) [802-10-012-10-002000](#) [1112640](#) [1112639](#) [891-007-9SS-BST1T](#) [000-34000](#) [0008550134](#) [0009482033](#) [0009507031](#) [57102-F02-18ULF](#) [57102-S06-03LF](#) [57202-S52-04LF](#) [PCN6-15S-2.5E](#) [0039019024](#) [58102-G61-06LF](#) [582553-1](#) [0009485154](#) [0009508121](#) [0022285053](#) [0050291907](#) [018731A](#) [LY20-4P-DT1-P1E-BR](#) [02.125.8002.8](#) [60101931](#) [60598-1 \(Cut Strip\)](#) [M1625-3R/100](#) [61062-3](#) [61082-181009](#) [CSU011177004](#) [636-1427](#) [638009-1](#) [641938-9](#) [641991-4](#) [644168-1](#) [644827-2](#) [647662-1](#) [65039-019ELF](#) [65692-001LF](#) [65781-018](#) [65781-047](#)