

INDIVIDUAL SPECIFICATION SHEET

Product Name: Polymer PTC DISC Type

Part Number: TD250-1-4

Revision: A



Dongguan TLC Electronic Technology Co., LTD

No.18,5th GaoLi Road,TangXia Town,DongGuan,GuangDong,P.R China 523710

TEL: 86-0769-3892 0511

FAX: 86-0769-8793 2077

Http: www.tlcet.com.cn

Rev.	Effective Date	Changed Contents
A	2017-10-14	New release

☞ The individual specification sheet are the property of Dongguan TLC electronic technology Co.,Ltd and shall not be copied or used as commercial purposes without permission.

PREPARED BY

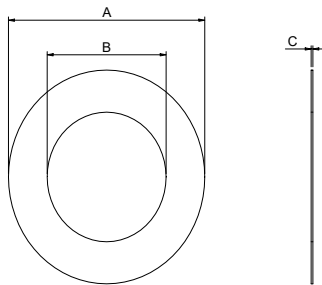
APPROVED BY

Vivian

Linden

Product Introduction

1. Product Dimensions & Outline Drawing & marking (Unit:mm)



Model	A	B	C	◎ Concentricity
		NOR	NOR	NOR
TD250-1-4	16.3±0.05	10±0.05	0.3±0.03	0.1

2. Electrical Properties

Model	I _H (A)	I _T (A)	V _{max} (V)	I _{max} (A)	T _{trip}		Pd _{typ} (W)	R _{min} (Ω)	R _{max} (Ω)	R1 _{max} (Ω)
					(A)	(S)				
TD250-1-4	2.50	5.00	15	40	10	10	1.00	0.014	0.016	0.030

I_H: Holding Current: maximum current at which the device will not trip in 25°C still air.

I_T: Tripping Current minimum current at which the device will trip in 25°C still air.

V_{max}: Maximum voltage device can withstand without damage at rated current.

I_{max}: Maximum fault current device can withstand without damage at rated voltage.

T_{trip}: Maximum time to trip(s) at assigned current.

Pd_{typ}: Rated working power.

R_{min}: Minimum resistance of device prior to trip at 25°C.

R_{max}: Maximum resistance of device prior to trip at 25°C.

R1_{max}: Maximum resistance of device measured one hour after tripping at 25°C.

3. Environmental Characteristics

Operating/Storage Temperature -40 °C to +85 °C

Storage Conditions+40 °C Max. 70% RH Max. Packed in original packaging.

4. Agency Approvals

- Agency Approvals: UL、CSA
- Regulation/Standard: RoHS, Reach, HF

5. Package information

- Bulk: 2000 pcs/bag

X-ON Electronics

Largest Supplier of Electrical and Electronic Components

Click to view similar products for [Resettable Fuses - PPTC category](#):

Click to view products by [TLC manufacturer](#):

Other Similar products are found below :

[0001.1010.G](#) [D38999/20WG39JN](#) [F02B250V1-4AS](#) [9728214S-2\(621\)](#) [RF0627-000](#) [RF2534-000](#) [ASMD185-2](#) [EN2997S61212AN](#)
[EN2997SE61203AN](#) [BK-ABC-V-5-R](#) [LR4-550RAF](#) [SMD125-2](#) [F60C500V20AS](#) [RF0078-000](#) [RF1548-000](#) [RF1973-000](#) [RF2171-000](#)
[RF2531-000](#) [RF2533-000](#) [RF2550-000](#) [TR600-150Q-B-0.5-0.130](#) [BK-AGX-20](#) [5E4795/04-1502](#) [EN2997S61212MN](#) [EN2997SE61203MN](#)
[EN2997SE61212AN](#) [EN2997SE61212MN](#) [BK1/S505-1.25-R](#) [TR-3216FF20-R](#) [TRF250-080T-B-1.0-0.125](#) [JT06RT1832BN014](#) [S-3-2-10](#)
[SMD100-2](#) [FRN-R-5-6-10](#) [FRS-R-3-2-10](#) [LP-CC-2-1-2](#) [LPS-RK-3-2-10SP](#) [BK-AGC-1-8-R](#) [BK-AGC-2-10-R](#) [BK-AGC-7-1-2](#) [BK-GDC-](#)
[500MA](#) [BK-MDL-1-6-10-R](#) [BK-SFE-4](#) [BK-ABC-1-R](#) [BK-C518-250-R](#) [BK-GDB-2A](#) [BK-MDL-1-8-R](#) [BK-MDL-6](#) [BK-AGC-5-R](#) [BK-ATC-](#)