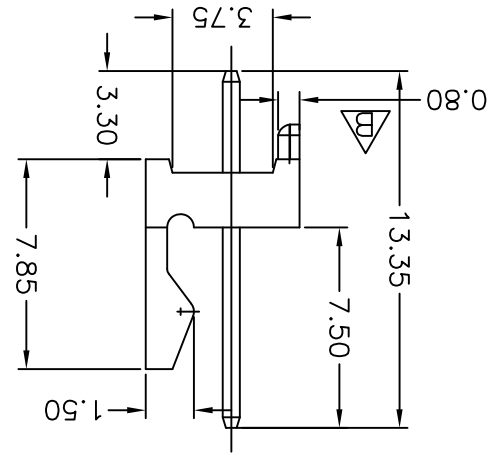
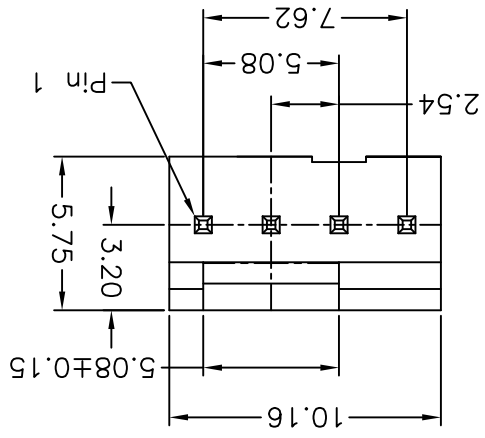
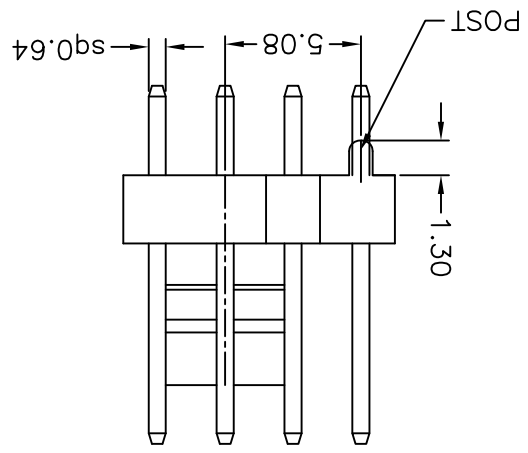
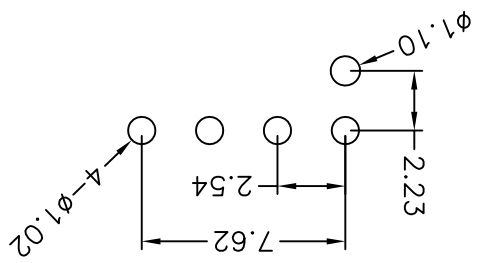


REV.	DESCRIPTION	DATE	ANG.±.3° TOLERANCE	SCALE NONE	SHEET 1 OF 1	REV. B	AP'D	NEW PART NO. 744-81-04TG1B	DRAW NO. 744-81-04TG1B(B版)
A	RELEASE	2011/09/16	±.000 = ±.XXX	A4	1	尹小美	CHECK		PINREX TECHNOLOGY CORP.
B	增加0.80尺寸	2013/04/19	±.00 = ±.30 ±.50	UNITS : mm		2544S-04TG		2.54mm WIRE TO BOARD HEADER	Pinrex 矽科技(股)有限公司
			0			OLD PART NO.		TITLE	
								DIP 180° TYPE	

Recommended P.C.B Layout



744-81-04TG1B  
1 2 3 4 5

- 1. 8: Green Product
- 2. No. of contacts per row
- 3. G: Gold flash
- S: Selective
- T: Tin plated
- 4. G: Charcoal Insulator (7547C)
- 5. Pinrex internal code.

**MATERIAL**  
Insulator : NY66 + 30% Glass fiber  
Contact Pin : Brass

**SPECIFICATION**  
Current Rate : 2.5 AMP  
Dielectric voltage : 250V AC for one minute  
Insulation Resistance : 1000MΩMin.  
Contact Resistance : 20mΩMax

## X-ON Electronics

Largest Supplier of Electrical and Electronic Components

*Click to view similar products for [Headers & Wire Housings](#) category:*

*Click to view products by [Pinrex](#) manufacturer:*

Other Similar products are found below :

[95000-104TRLF](#) [10135584-644402LF](#) [DF62W-EP2022PCA](#) [95000-106TRLF](#) [DF62W-2022SCA](#) [DF62W-EP2022PC](#) [2203348](#) [DF62W-2022SC](#) [1084018](#) [1029039](#) [1084017](#) [802-10-012-10-002000](#) [1112640](#) [1112639](#) [891-007-9SS-BST1T](#) [000-34000](#) [0008550134](#) [0009482033](#) [0009507031](#) [57102-F02-18ULF](#) [57102-S06-03LF](#) [57202-S52-04LF](#) [PCN6-15S-2.5E](#) [0039019024](#) [58102-G61-06LF](#) [582553-1](#) [0009485154](#) [0009508121](#) [0022285053](#) [0050291907](#) [018731A](#) [LY20-4P-DT1-P1E-BR](#) [02.125.8002.8](#) [60101931](#) [60598-1 \(Cut Strip\)](#) [M1625-3R/100](#) [61062-3](#) [61082-181009](#) [CSU011177004](#) [636-1427](#) [638009-1](#) [641938-9](#) [641991-4](#) [644168-1](#) [644827-2](#) [647662-1](#) [65039-019ELF](#) [65692-001LF](#) [65781-018](#) [65781-047](#)