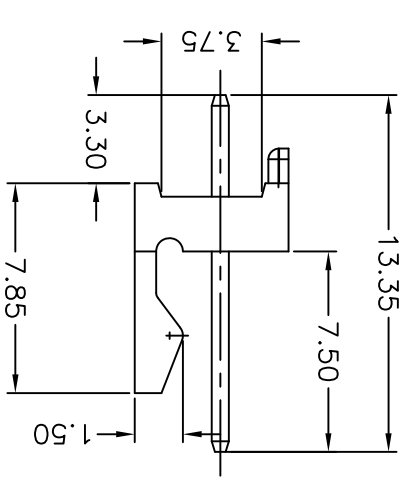
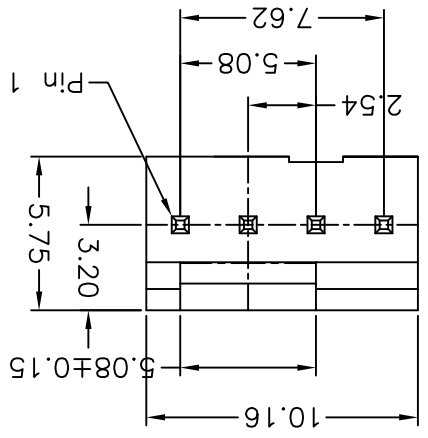
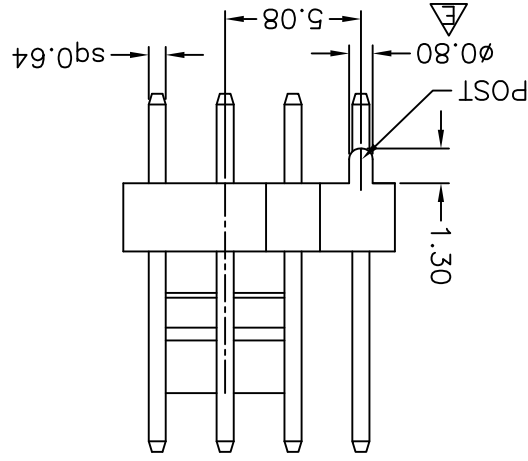
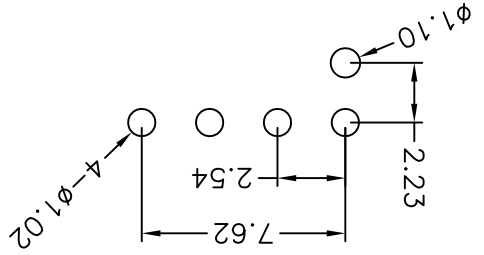


REV.	DESCRIPTION	DATE	ANG.±.3°	TOLERANCE	0 =±.50 0.00 =±.30 0.000 =±.XXX	SCALE	NONE	SIZE	A4	SHEET	1 OF 1	REV.	E	APP'D	NEW PART NO.	744-81-04TG20	DRAW NO.	744-81-04TG20(E板)
A	RELEASE POST	2008/11/06																
B	REVERSE POST	2008/12/23																
C	REVERSE DESCRIPTION	2009/08/06																
D	ADD TOLERANCE	2011/06/01																
E	标示柱子0.80的尺寸	2012/05/03																

Recommended P.C.B Layout



744-8 1-04 T G 20
1 2 3 4 5

1. 8: Green Product
2. No. of contacts per row
3. G: Gold flash
- S: Selective
- T: Tin plated
4. G: light gray insulator (7541C)
5. Pinrex internal code.

MATERIAL
Insulator : NY66 + 30% Glass fiber
Contact Pin : Brass

SPECIFICATION
Current Rate : 2.5 AMP
Dielectric voltage : 250V AC for one minute
Insulation Resistance : 1000MΩMin.
Contact Resistance : 20mΩMax

PINREX TECHNOLOGY CORP.
PINREX TECHNOLOGY CORP.



TITLE
2.54mm WIRE TO BOARD HEADER
DIP 180° TYPE

X-ON Electronics

Largest Supplier of Electrical and Electronic Components

Click to view similar products for [Headers & Wire Housings](#) category:

Click to view products by [Pinrex](#) manufacturer:

Other Similar products are found below :

[95000-104TRLF](#) [10135584-644402LF](#) [DF62W-EP2022PCA](#) [95000-106TRLF](#) [DF62W-2022SCA](#) [DF62W-EP2022PC](#) [2203348](#) [DF62W-2022SC](#) [1084018](#) [1029039](#) [1084017](#) [802-10-012-10-002000](#) [1112640](#) [1112639](#) [891-007-9SS-BST1T](#) [000-34000](#) [0008550134](#) [0009482033](#) [0009507031](#) [57102-F02-18ULF](#) [57102-S06-03LF](#) [57202-S52-04LF](#) [PCN6-15S-2.5E](#) [0039019024](#) [58102-G61-06LF](#) [582553-1](#) [0009485154](#) [0009508121](#) [0022285053](#) [0050291907](#) [018731A](#) [LY20-4P-DT1-P1E-BR](#) [02.125.8002.8](#) [60101931](#) [60598-1 \(Cut Strip\)](#) [M1625-3R/100](#) [61062-3](#) [61082-181009](#) [CSU011177004](#) [636-1427](#) [638009-1](#) [641938-9](#) [641991-4](#) [644168-1](#) [644827-2](#) [647662-1](#) [65039-019ELF](#) [65692-001LF](#) [65781-018](#) [65781-047](#)