

|           |  |           |  |                    |  |                                      |  |                                      |  |                           |  |
|-----------|--|-----------|--|--------------------|--|--------------------------------------|--|--------------------------------------|--|---------------------------|--|
| TOLERANCE |  | X.±0.40   |  | X.±                |  | DONGGUAN UMAXCONN ENTERPRISE LIMITED |  | TITLE: MINI PCI EXPRESS 5.2MM HEIGHT |  | PART NO. 91304-52-052RXXX |  |
| ANGLES    |  | X.±       |  | APPD: Jason        |  | MAT'L:                               |  | DWG NO. C-91304-52                   |  | REV                       |  |
| LINEAR    |  | X.±0.20   |  | CHKD: Schumi       |  | FINISH:                              |  | UNITS                                |  | SCALE                     |  |
|           |  | .XXX±     |  | DRWN: Lei Songping |  | Q'TY:                                |  | MM                                   |  | 1 OF 5                    |  |
|           |  | .XXX±0.15 |  |                    |  |                                      |  |                                      |  | 8 CUSTOMER                |  |

|     |  |         |  |              |  |             |  |       |  |           |  |
|-----|--|---------|--|--------------|--|-------------|--|-------|--|-----------|--|
| REV |  | ECN NO. |  | NAME         |  | DATE        |  | .XXX± |  | .XXX±0.15 |  |
| 0   |  | ----    |  | Lei Songping |  | Jun,06,2019 |  | X.±   |  | X.±0.30   |  |
|     |  |         |  |              |  |             |  | X.±   |  | X.±0.40   |  |

|   |  |   |  |   |  |   |  |   |  |   |  |   |  |   |  |
|---|--|---|--|---|--|---|--|---|--|---|--|---|--|---|--|
| 1 |  | 2 |  | 3 |  | 4 |  | 5 |  | 6 |  | 7 |  | 8 |  |
|---|--|---|--|---|--|---|--|---|--|---|--|---|--|---|--|

NOTES:  
 1. MATERIAL: HOUSING: THERMOPLASTIC, HIGH TEMP, UL94V-0, BLACK COLOR,  
 CONTACTS: COPPER ALLOY.  
 PEGS: COPPER ALLOY.

2. FINISH:  
 CONTACTS: SELECTED GOLD PLATING ON THE CONTACT AREA,  
 1u" MIN. GOLD PLATING ON THE SOLDERTAILS,  
 50 u" MIN. NICKEL UNDERPLATING OVER ALL.  
 PEGS: 120u" MIN. MATTE-TIN OVER 50u" MIN. NICKEL.

3. PACKAGING SPECIFICATION: 9130404001

4. PRODUCT SPECIFICATION: PS-MINI PCI-E-01

5. DATE CODE: YYYWDD

YY: YEAR (19: 2019)  
 WW: WEEK (25: THE 25TH WEEK)  
 DD: (D1~D7: SUNDAY~SATURDAY)

PRODUCT NUMBER CODE

91304 - 52 - 052 R X XX

52: 5.2H HEIGHT  
 52 CONTACTS  
 R: TAPE & REEL  
 PACKAGING OPTIONS  
 CONTACT AREA PLATING  
 HALOGEN OPTIONS  
 BLANK: HALOGEN  
 HF: HALOGEN FREE  
 0: 30u" GOLD  
 1: 10u" GOLD  
 2: GOLD FLASH

1. MATERIAL: HOUSING: THERMOPLASTIC, HIGH TEMP, UL94V-0, BLACK COLOR,  
 CONTACTS: COPPER ALLOY.  
 PEGS: COPPER ALLOY.

2. FINISH:  
 CONTACTS: SELECTED GOLD PLATING ON THE CONTACT AREA,  
 1u" MIN. GOLD PLATING ON THE SOLDERTAILS,  
 50 u" MIN. NICKEL UNDERPLATING OVER ALL.  
 PEGS: 120u" MIN. MATTE-TIN OVER 50u" MIN. NICKEL.

3. PACKAGING SPECIFICATION: 9130404001

4. PRODUCT SPECIFICATION: PS-MINI PCI-E-01

5. DATE CODE: YYYWDD

YY: YEAR (19: 2019)  
 WW: WEEK (25: THE 25TH WEEK)  
 DD: (D1~D7: SUNDAY~SATURDAY)

PRODUCT NUMBER CODE

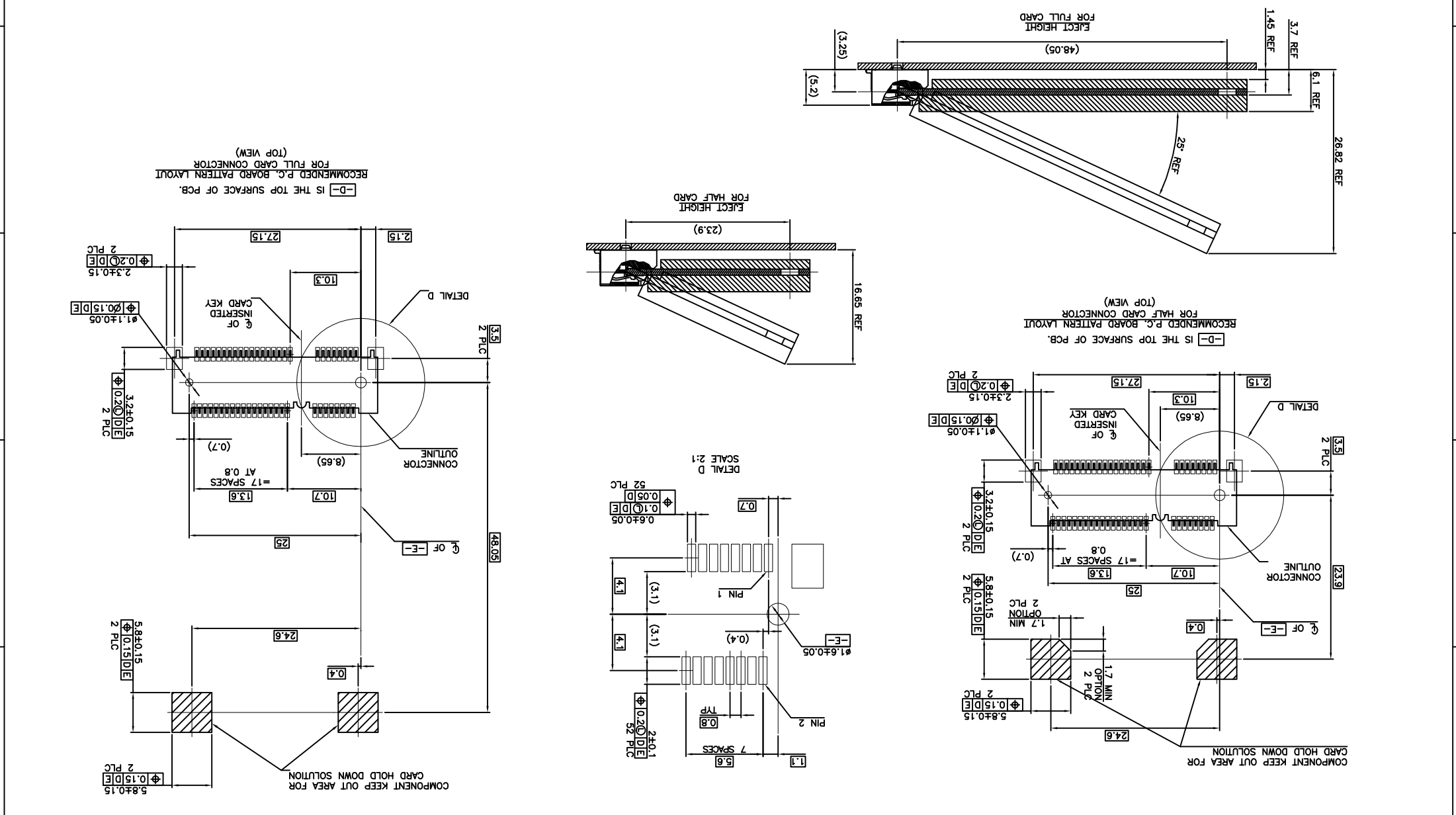
91304 - 52 - 052 R X XX

52: 5.2H HEIGHT  
 52 CONTACTS  
 R: TAPE & REEL  
 PACKAGING OPTIONS  
 CONTACT AREA PLATING  
 HALOGEN OPTIONS  
 BLANK: HALOGEN  
 HF: HALOGEN FREE  
 0: 30u" GOLD  
 1: 10u" GOLD  
 2: GOLD FLASH

| REV | ECN NO. | NAME         | DATE        | .XXX±.15  | .XXX±  | DRWN: Lei Songping                   | Q'TY:   | 6                                    | 7     | 8        |
|-----|---------|--------------|-------------|-----------|--------|--------------------------------------|---------|--------------------------------------|-------|----------|
| 0   | ----    | Lei Songping | Jun,06,2019 | .XX±.20   | .XX±   | CHKD: Schumi                         | FINISH: |                                      | MM    | CUSTOMER |
|     |         |              |             | .X±.30    | .X±    | APPD: Jason                          | MAT'L:  | DWG NO. C-91304-52                   | UNITS |          |
|     |         |              |             | X.±.40    | X.±    | PART NO. 91304-52-052RXXX            |         | TITLE: MINI PCI EXPRESS 5.2MM HEIGHT |       |          |
|     |         |              |             | TOLERANCE |        | DONGGUAN UMAXCONN ENTERPRISE LIMITED |         | UMax 东莞市外贸实业有限公司                     |       |          |
|     |         |              |             | LINEAR    | ANGLES |                                      |         |                                      |       |          |

8 7 6 5 4 3 2 1

A B C D E



|                                      |  |     |  |  |  |     |  |                    |  |     |  |              |  |     |  |                    |  |     |  |       |  |     |  |     |  |  |  |   |  |  |  |          |  |  |  |   |  |  |  |   |  |  |  |
|--------------------------------------|--|-----|--|--|--|-----|--|--------------------|--|-----|--|--------------|--|-----|--|--------------------|--|-----|--|-------|--|-----|--|-----|--|--|--|---|--|--|--|----------|--|--|--|---|--|--|--|---|--|--|--|
| TOLERANCE                            |  | X.± |  | X.±  |  | X.± |  | X.±                |  | X.± |  | X.±          |  | X.± |  | X.±                |  | X.± |  | X.±   |  | X.± |  |     |  |  |  |   |  |  |  |          |  |  |  |   |  |  |  |   |  |  |  |
| LINEAR                               |  | X.± |  | X.±  |  | X.± |  | X.±                |  | X.± |  | X.±          |  | X.± |  | X.±                |  | X.± |  | X.±   |  | X.± |  |     |  |  |  |   |  |  |  |          |  |  |  |   |  |  |  |   |  |  |  |
| ANGLES                               |  | X.± |  | X.±  |  | X.± |  | X.±                |  | X.± |  | X.±          |  | X.± |  | X.±                |  | X.± |  | X.±   |  | X.± |  |     |  |  |  |   |  |  |  |          |  |  |  |   |  |  |  |   |  |  |  |
| TITLE: MINI PCI EXPRESS 5.2MM HEIGHT |  |     |  | PART NO. 91304-52-052RXXX                      |  |     |  | DWG NO. C-91304-52 |  |     |  | REV 0        |  |     |  |                    |  |     |  |       |  |     |  |     |  |  |  |   |  |  |  |          |  |  |  |   |  |  |  |   |  |  |  |
| Umax 东莞市外贸实业有限公司                     |  |     |  | Umax conn DONGGUAN UMAXCONN ENTERPRISE LIMITED |  |     |  | APPD: Jason        |  |     |  | CHKD: Schumi |  |     |  | DRWN: Lei Songping |  |     |  |       |  |     |  |     |  |  |  |   |  |  |  |          |  |  |  |   |  |  |  |   |  |  |  |
| EJECT HEIGHT                         |  |     |  | FINISH:  |  |     |  | Q'TY:              |  |     |  | UNITS        |  |     |  | SCALE              |  |     |  | SHEET |  |     |  | REV |  |  |  |   |  |  |  |          |  |  |  |   |  |  |  |   |  |  |  |
| MM                                   |  |     |  | 1:1  |  |     |  | 3 OF 5             |  |     |  | 0            |  |     |  | 7                  |  |     |  | 6     |  |     |  | 5   |  |  |  | 4 |  |  |  | 3        |  |  |  | 2 |  |  |  | 1 |  |  |  |
| 8                                    |  |     |  | 7  |  |     |  | 6                  |  |     |  | 5            |  |     |  | 4                  |  |     |  | 3     |  |     |  | 2   |  |  |  | 1 |  |  |  | CUSTOMER |  |  |  |   |  |  |  |   |  |  |  |

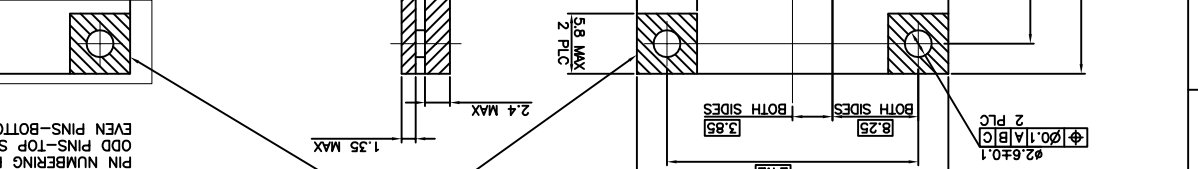
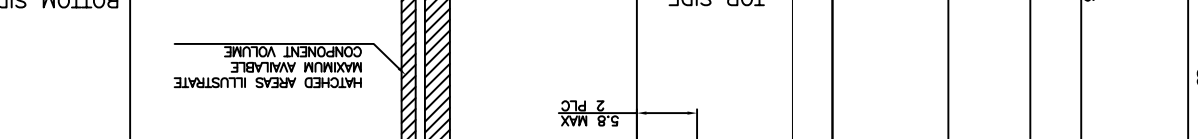
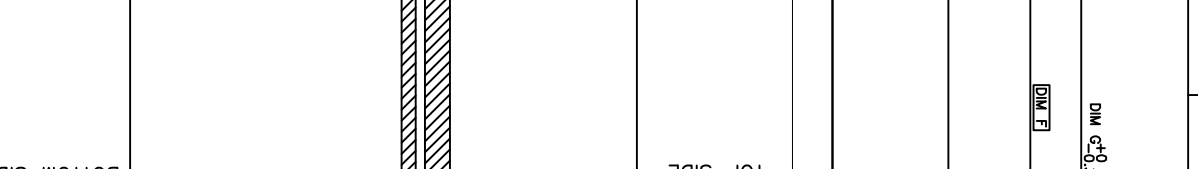
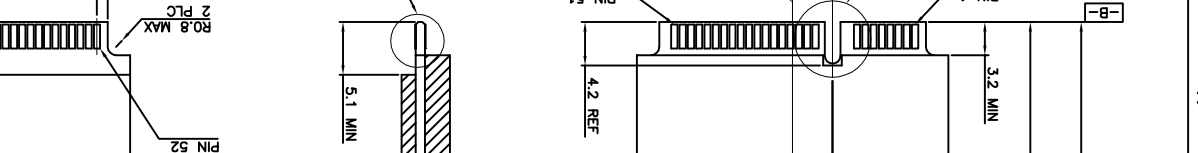
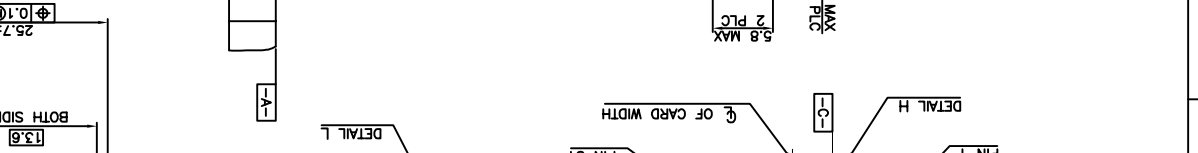
|                                      |  |                           |  |                    |  |                              |  |            |  |
|--------------------------------------|--|---------------------------|--|--------------------|--|------------------------------|--|------------|--|
| TOLERANCE                            |  | X.±                       |  | X.±                |  | X.XX±                        |  | X.XX±      |  |
| LINEAR                               |  | X.±                       |  | X.±                |  | X.XX±                        |  | X.XX±      |  |
| ANGLES                               |  | X.±                       |  | X.±                |  | X.XX±                        |  | X.XX±      |  |
| DONGGUAN UMAXCONN ENTERPRISE LIMITED |  |                           |  | APPD: Jason        |  | MATERIAL: DRWN: Lei Songping |  | Q'TY:      |  |
| TITLE: MINI PCI EXPRESS 5.2MM HEIGHT |  | PART NO. 91304-52-052RXXX |  | DWG NO. C-91304-52 |  | UNITS: MM                    |  | SCALE: 1:1 |  |
| REV: 0                               |  | ECCN NO. ----             |  | NAME: Lei Songping |  | DATE: Jun,06,2019            |  | REV: 0     |  |

CUSTOMER: 8

FOR PCI EXPRESS MINI CARD

NOTES:

- CARD THICKNESS APPLIES ACROSS TABS AND INCLUDES PLATING AND/OR METALLIZATION.
- BURRS FROM PCB AND CONTACT MATERIALS. EDGE BEVEL MUST BE PRESENT AND FREE OF CUTTING.



COMPONENT AND ROUTING (ALL LAYERS) KEEP OUT AREA FOR HOLD DOWN SOLUTIONS

HATCHED AREAS ILLUSTRATE MAXIMUM AVAILABLE COMPONENT VOLUME

PIN 52

PIN 2

DETAIL L

5.1 MIN

2.4 MAX

1.35 MAX

RO.8 MAX

2 PLC

BOTH SIDES

3.85

8.25

24.2

Ø0.1±0.1

2 PLC

5.8 MAX

2 PLC

5.8 MAX

2 PLC

4.2 REF

PIN 51

Ø OF CARD WIDTH

DETAIL H

PIN 1

3.2 MIN

5.8 MAX

1.7 MAX

5.8 MAX

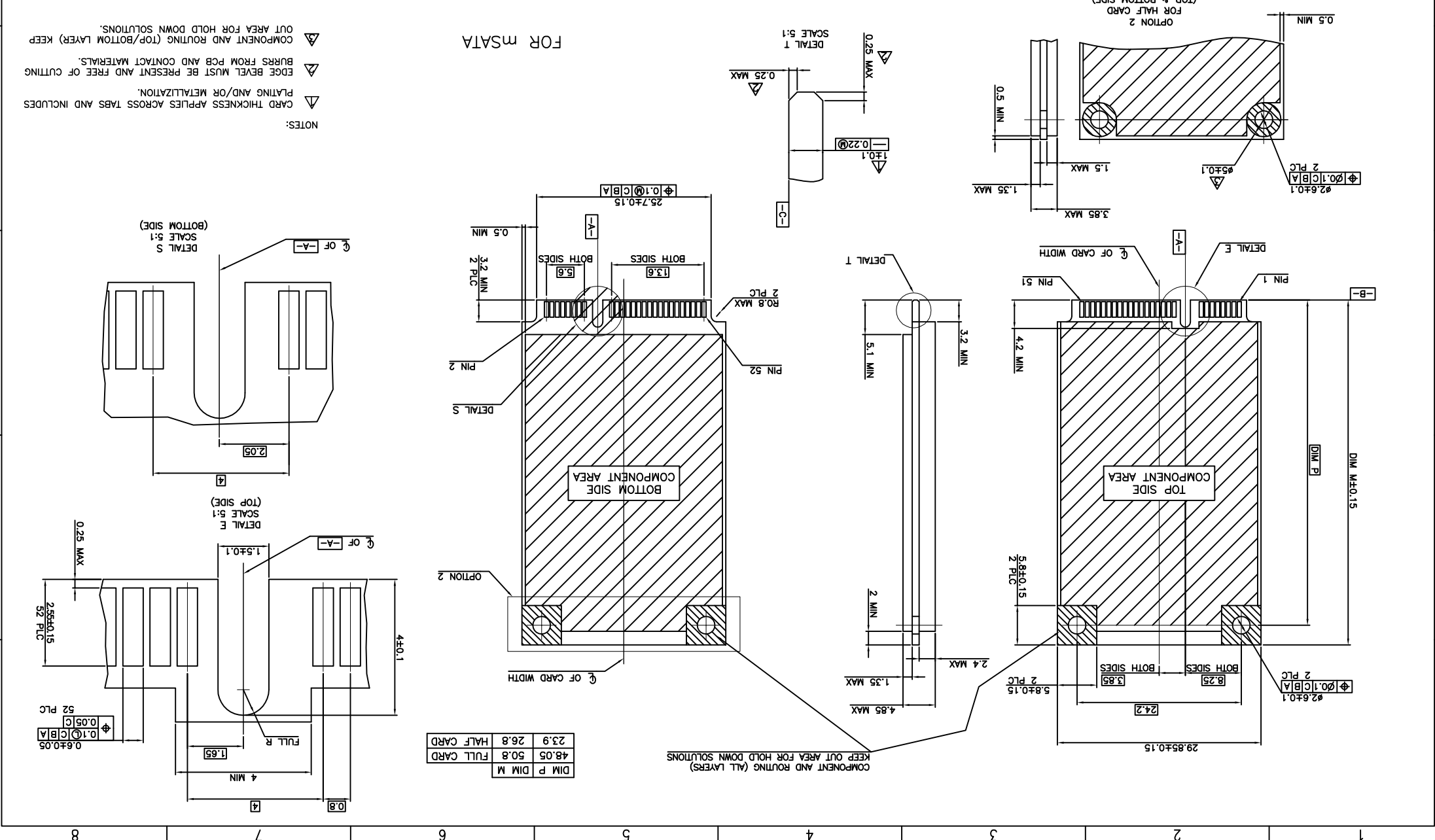
2 PLC

2 PLC

1.7 MAX

Ø OF CARD WIDTH

|   |     |         |              |             |           |       |  |         |   |   |
|---|-----|---------|--------------|-------------|-----------|-------|--|---------|---|---|
| 1 | REV | ECC NO. | NAME         | DATE        | .XXX±     | .XXX± | DRWN: Lei Songping   | Q'TY:   | 7 | 8 |
| 0 | 0   | ----    | Lei Songping | Jun,06,2019 | .XX±      | .XX±  | CHKD: Schumi   | FINISH: | 6 | 8 |
|   |     |         |              |             | .X±       | .X±   | APPD: Jason  | MAT'L:  | 5 | 8 |
|   |     |         |              |             | X.±       | X.±   | <b>Umax</b><br>东莞市外贸实业有限公司<br>DONGGUAN UMAXCONN ENTERPRISE LIMITED |         | 4 | 8 |
|   |     |         |              |             | TOLERANCE |       | TITLE: MINI PCI EXPRESS 5.2MM HEIGHT                               |         | 3 | 8 |
|   |     |         |              |             | LINEAR    |       | PART NO. 91304-52-052RXXX  |         | 2 | 8 |
|   |     |         |              |             | ANGLES    |       | DWG NO. C-91304-52   |         | 1 | 8 |



## X-ON Electronics

Largest Supplier of Electrical and Electronic Components

*Click to view similar products for [Standard Card Edge Connectors](#) category:*

*Click to view products by [UMAX](#) manufacturer:*

Other Similar products are found below :

[6565204-6](#) [PKC-156](#) [1437274-4](#) [147889-1](#) [1489165-4](#) [EBT156-12B1X](#) [EBT15622B2X](#) [EBT156-22R2W](#) [1-582587-1](#) [1-582589-1](#) [2-6437275-9](#) [284-0102-12100](#) [306022901000000](#) [307-012-502-202](#) [307-024-526-201](#) [307-056-520-300](#) [307-080-526-208](#) [1926088-2](#) [245-062-520-350](#) [287-0032-12101](#) [306-010-500-112](#) [306-028-525-102](#) [306-240-318](#) [307-036-502-202](#) [307-036-521-301](#) [307-072-526-202](#) [345-060-559-303](#) [368-004-520-201](#) [392-008-559-201](#) [534671-1](#) [5-530501-5](#) [341-240-317](#) [345-029-520-300](#) [345-030-500-301](#) [345-044-500-300](#) [345-220-058](#) [346-240-318](#) [357-030-526-201](#) [387-012-523-300](#) [395-044-520-300](#) [395-100-524-300](#) [50-12B-10](#) [50-6SN-5](#) [09-07-2032](#) [10035388-106LF](#) [10035388-802LF](#) [10115859-011LF](#) [10122859-009LF](#) [101269333204245CLF](#) [10127905-B04B24BLF](#)