

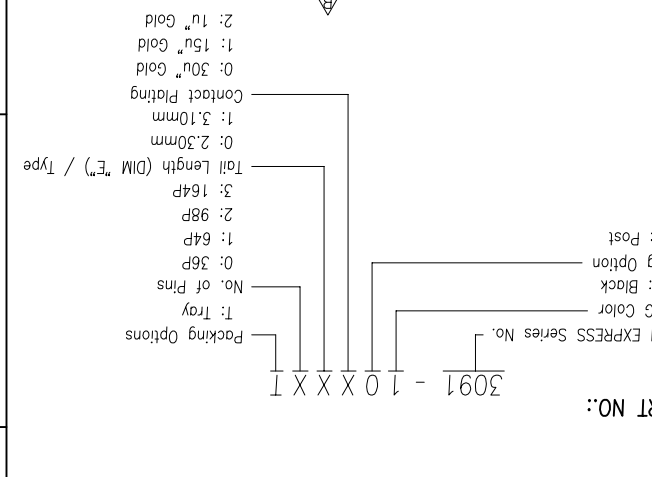
REV	ECON NO.	NAME	DATE	.XXX±.10	.XXX±	DRWN: Terry	Q'TY:
A	12035	Terry	Jul,05,2012	.XX±.15	.XX±	CHKD: Schumi	FINISH:
B	14026	Terry	Nov,13,2014	.X±.20	.X±	APPD: Jason	MAT'L:
				X.±.25	X.±		
				LINEAR	ANGLES		
				TOLERANCE			

Umax
 DONGGUAN UMAXCONN ENTERPRISE LIMITED
 东莞市友贸实业有限公司

PART NO.: 3091-10XXX1
 DWG NO.: 309105001

TITLE: PCI EXPRESS CARD EDGE,
 1.0mm PITCH, R/A TYPE

POSITION	N	B ±0.15	C ±0.15	D ±0.23
36	6	7.65	9.15	25.00
64	20	21.65	23.15	39.00
98	37	38.65	40.15	56.00
164	70	71.65	73.15	89.00



NOTES:
 1. MATERIAL: PA9T (KUARARY G2330) WITH 30% GF, UL94V-0, COLOR: SEE PART NO..
 TINE PLATE: LCP (ZENITE 5145L OR E471I) WITH 30% GF, COLOR: SEE PART NO..
 1.2 CONTACTS: PHOSPHOR BRONZE, C5191R-H, T=0.25mm
 2. FINISH:
 2.1 CONTACT: SELECTIVE GOLD PLATING ON CONTACT AREA,
 100" MIN. MATTE TIN PLATING ON SOLDER TAILS,
 50" MIN. NICKEL UNDERPLATING OVERALL.
 3. "Ø" IS MAJOR DIMENSION FOR QC.
 4. "⊗" SHOWS FAI MEASUREMENT POINT.
 5. PRODUCT SPEC: PS-3G10-01
 6. PACKAGING SPEC: 309104001

8	INSPECTION
7	
6	
5	
4	
3	
2	
1	

X-ON Electronics

Largest Supplier of Electrical and Electronic Components

Click to view similar products for [Standard Card Edge Connectors](#) category:

Click to view products by [UMAX](#) manufacturer:

Other Similar products are found below :

[6565204-6](#) [PKC-156](#) [1437274-4](#) [147889-1](#) [1489165-4](#) [EBT156-12B1X](#) [EBT15622B2X](#) [EBT156-22R2W](#) [1-582587-1](#) [1-582589-1](#) [2-6437275-9](#) [284-0102-12100](#) [306022901000000](#) [307-012-502-202](#) [307-024-526-201](#) [307-056-520-300](#) [307-080-526-208](#) [1926088-2](#) [245-062-520-350](#) [287-0032-12101](#) [306-010-500-112](#) [306-028-525-102](#) [306-240-318](#) [307-036-502-202](#) [307-036-521-301](#) [307-072-526-202](#) [345-060-559-303](#) [368-004-520-201](#) [392-008-559-201](#) [534671-1](#) [5-530501-5](#) [341-240-317](#) [345-029-520-300](#) [345-030-500-301](#) [345-044-500-300](#) [345-220-058](#) [346-240-318](#) [357-030-526-201](#) [387-012-523-300](#) [395-044-520-300](#) [395-100-524-300](#) [50-12B-10](#) [50-6SN-5](#) [09-07-2032](#) [10035388-106LF](#) [10035388-802LF](#) [10115859-011LF](#) [10122859-009LF](#) [101269333204245CLF](#) [10127905-B04B24BLF](#)