



# SGM6031

## Ultra-Low Power Step-Down Converters with Up to 200mA Output Current

### GENERAL DESCRIPTION

The SGM6031 family provides a highly integrated ultra-low power step-down converter solution that is well suited for meeting the special needs of ultra-low power applications such as energy harvesting. The regulators are intended to step-down the voltage from an energy storage element such as a battery or super capacitor to supply the rail to low-voltage electronics. The regulated output has been optimized to provide high efficiency a cross low output currents (<10 $\mu$ A) to high currents (200mA).

The SGM6031 family integrates an optimized hysteretic controller for low-power applications. The internal circuitry uses a time-based sampling system to reduce the average quiescent current.

All the capabilities of SGM6031 are packed into a small UTDFN-1.5 $\times$ 2-6L package. They operated over an ambient temperature range of -40 $^{\circ}$ C to +85 $^{\circ}$ C.

### FEATURES

- **Industry's Highest Efficiency at Low Output Currents: Up to 90% with  $I_{OUT} = 1\text{mA}$**
- **Ultra-Low Power Step-Down Converters**
- **200mA Maximum Output Current**
- **1.8V to 5.5V Input Operating Range**
- **Fixed Output Voltages: 1.0V, 1.2V, 1.5V, 1.8V, 2.5V, 2.8V, 3.0V and 3.3V**
- **Output Adjustable from 1.0V to 3.3V**
- **450nA Quiescent Current During Active Operation**
- **100% Duty Cycle (Pass Mode)**
- **Available in Green UTDFN-1.5 $\times$ 2-6L Package**
- **-40 $^{\circ}$ C to +85 $^{\circ}$ C Operating Temperature Range**

### APPLICATIONS

Ultra-Low Power Applications  
 2-Cell and 3-Cell Alkaline-Powered Applications  
 Energy Harvesting  
 Solar Chargers  
 Thermal Electric Generator (TEG) Harvesting  
 Wireless Sensor Networks (WSN)  
 Low-Power Wireless Monitoring  
 Environmental Monitoring  
 Bridge and Structural Health Monitoring (SHM)  
 Smart Building Controls  
 Portable and Wearable Health Devices  
 Entertainment System Remote Controls

# Ultra-Low Power Step-Down Converters with Up to 200mA Output Current

## SGM6031

### PACKAGE/ORDERING INFORMATION

MODEL	V <sub>OUT</sub> (V)	PACKAGE DESCRIPTION	SPECIFIED TEMPERATURE RANGE	ORDERING NUMBER	PACKAGE MARKING	PACKING OPTION
SGM6031-1.0	1.0	UTDFN-1.5×2-6L	-40°C to +85°C	SGM6031-1.0YUDT6G/TR	GJC XXX	Tape and Reel, 3000
SGM6031-1.2	1.2	UTDFN-1.5×2-6L	-40°C to +85°C	SGM6031-1.2YUDT6G/TR	GJD XXX	Tape and Reel, 3000
SGM6031-1.5	1.5	UTDFN-1.5×2-6L	-40°C to +85°C	SGM6031-1.5YUDT6G/TR	GJE XXX	Tape and Reel, 3000
SGM6031-1.8	1.8	UTDFN-1.5×2-6L	-40°C to +85°C	SGM6031-1.8YUDT6G/TR	GJF XXX	Tape and Reel, 3000
SGM6031-2.5	2.5	UTDFN-1.5×2-6L	-40°C to +85°C	SGM6031-2.5YUDT6G/TR	GK0 XXX	Tape and Reel, 3000
SGM6031-2.8	2.8	UTDFN-1.5×2-6L	-40°C to +85°C	SGM6031-2.8YUDT6G/TR	GK1 XXX	Tape and Reel, 3000
SGM6031-3.0	3.0	UTDFN-1.5×2-6L	-40°C to +85°C	SGM6031-3.0YUDT6G/TR	GKA XXX	Tape and Reel, 3000
SGM6031-3.3	3.3	UTDFN-1.5×2-6L	-40°C to +85°C	SGM6031-3.3YUDT6G/TR	GK2 XXX	Tape and Reel, 3000
SGM6031-ADJ	ADJ	UTDFN-1.5×2-6L	-40°C to +85°C	SGM6031-ADJYUDT6G/TR	GKB XXX	Tape and Reel, 3000

NOTE: XXX = Date Code.

Green (RoHS & HSF): SG Micro Corp defines "Green" to mean Pb-Free (RoHS compatible) and free of halogen substances. If you have additional comments or questions, please contact your SGMICRO representative directly.

#### ABSOLUTE MAXIMUM RATINGS

Input Voltage Range on VIN, EN, VOUT, FB, SW  
 ..... -0.3V to 5.5V  
 Peak Currents VIN, VOUT ..... 420mA  
 Junction Temperature ..... +150°C  
 Storage Temperature Range ..... -65°C to +150°C  
 Lead Temperature (Soldering, 10s) ..... +260°C

#### RECOMMENDED OPERATING CONDITIONS

Input Voltage Range ..... 1.8V to 5.5V  
 Input Capacitance, C<sub>IN</sub> ..... 22µF (MIN)  
 Output Capacitance, C<sub>OUT</sub> ..... 10µF (MIN), 22µF (TYP)  
 Inductance, L ..... 10µH (MIN)  
 Operating Junction Temperature Range ..... -40°C to +105°C  
 Operating Temperature Range ..... -40°C to +85°C

#### OVERSTRESS CAUTION

Stresses beyond those listed may cause permanent damage to the device. Functional operation of the device at these or any other conditions beyond those indicated in the operational section of the specification is not implied. Exposure to absolute maximum rating conditions for extended periods may affect reliability.

#### ESD SENSITIVITY CAUTION

This integrated circuit can be damaged by ESD if you don't pay attention to ESD protection. SGMICRO recommends that all integrated circuits be handled with appropriate precautions. Failure to observe proper handling and installation procedures can cause damage. ESD damage can range from subtle performance degradation to complete device failure. Precision integrated circuits may be more susceptible to damage because very small parametric changes could cause the device not to meet its published specifications.

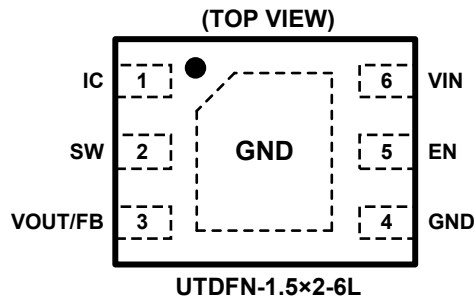
#### DISCLAIMER

SG Micro Corp reserves the right to make any change in circuit design, specification or other related things if necessary without notice at any time.

# Ultra-Low Power Step-Down Converters with Up to 200mA Output Current

SGM6031

## PIN CONFIGURATION



## PIN DESCRIPTION

PIN	NAME	FUNCTION
1	IC	For Internal Connection.
2	SW	Switching Node. Connect to output inductor.
3	VOUT	Step-Down Regulator Output.
	FB	Feedback Input (adjustable voltage version only). The voltage at this pin is regulated to 1.0V. Connected to the resistor divider between output and ground to set output voltage.
4	GND	Ground. Power and IC ground. All signals are referenced to this pin.
5	EN	Enable Input. Input logic high to enable this circuit and logic low to shut down. Do not leave this pin unconnected.
6	VIN	Input Voltage. Connect to input power source.
Exposed Pad	GND	Connect to GND.

TYPICAL APPLICATIONS

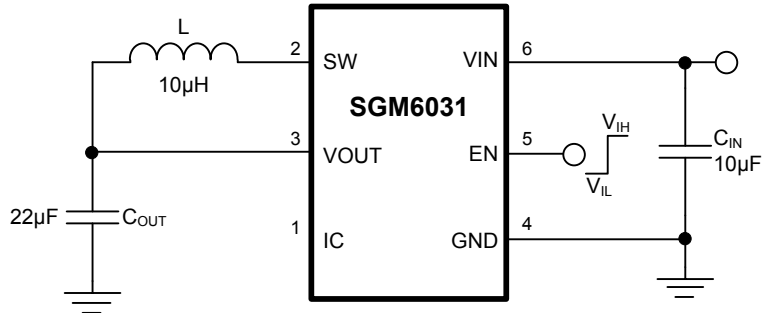


Figure 1. Fixed Voltage Typical Application Circuit

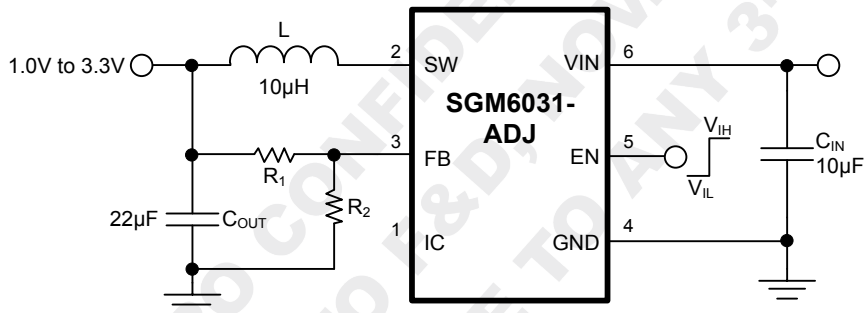


Figure 2. Adjustable Voltage Typical Application Circuit

SGMICRO CONFIDENTIAL  
RELEASED TO I&D/2016-  
DO NOT DISTRIBUTE TO ANY 3RD PARTY.

# Ultra-Low Power Step-Down Converters with Up to 200mA Output Current

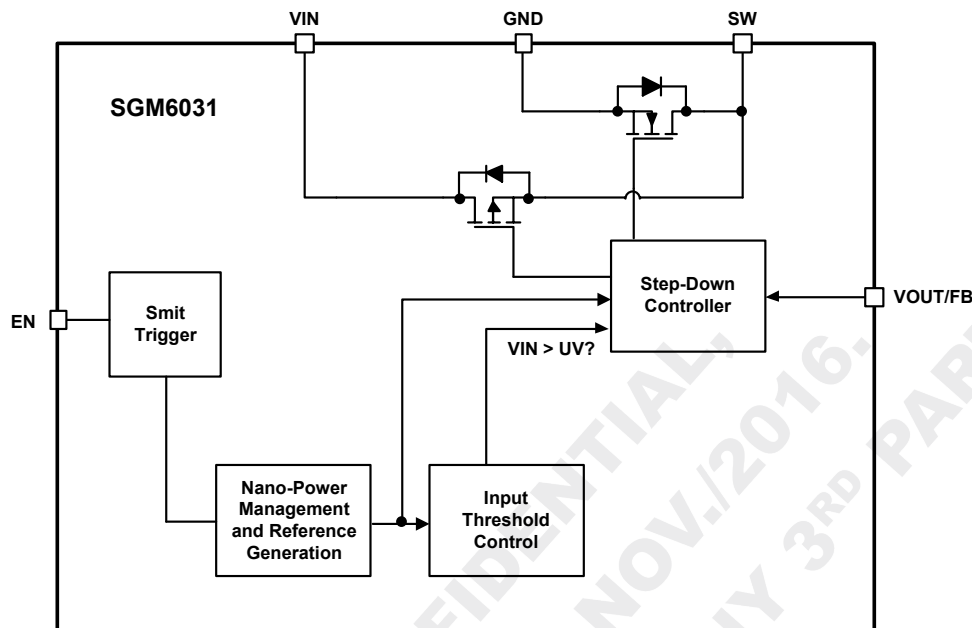
## SGM6031

### ELECTRICAL CHARACTERISTICS

( $V_{IN} = 3.6V$ ,  $V_{OUT} = 1.2V$ , typical values are at  $T_A = +25^{\circ}C$ .  $C_{IN} = 22\mu F$ ,  $L = 10\mu H$ ,  $C_{OUT} = 22\mu F$ , unless otherwise noted.)

PARAMETER	SYMBOL	CONDITIONS	MIN	TYP	MAX	UNITS
<b>QUIESCENT CURRENTS</b>						
Buck Enabled State	$I_Q$	$V_{IN} = 1.8V$ , $I_{OUT} = 0$		450		nA
<b>OUTPUT</b>						
Feedback Voltage	$V_{FB}$			1.0		V
Output Accuracy		$I_{OUT} = 10mA$		2		%
Output Line Regulation		$V_{IN} = 1.8V$ to $5.5V$ , $I_{OUT} = 100\mu A$		0.3		%/V
Output Load Regulation		$I_{OUT} = 100\mu A$ to $200mA$		0.002		%/mA
Output Ripple		$I_{OUT} = 1mA$		50		mV <sub>PP</sub>
<b>POWER SWITCH</b>						
High-Side Switch ON Resistance	$R_{DS(ON)}$			510		mΩ
Low-Side Switch ON Resistance				530		
Cycle-by-Cycle Current Limit	$I_{LIM}$			420		mA
Maximum Switching Frequency	$f_{SW}$			1.4		MHz
<b>INPUT</b>						
Input Under Voltage Protection	$V_{IN\_UVLO}$	$V_{IN}$ falling		1.3		V
<b>EN</b>						
Voltage for EN High Setting	$V_{IH}$			1		V
Voltage for EN Low Setting	$V_{IL}$			0.4		

### FUNCTIONAL BLOCK DIAGRAM



### DETAILED DESCRIPTION

The SGM6031 family provides a highly integrated ultra-low power step-down converter solution that is well suited for meeting the special needs of ultra-low power applications such as energy harvesting. The regulators are intended to step-down the voltage from an energy storage element such as a battery or super capacitor in order to supply the rail to low voltage electronics. The regulated output has been optimized to provide high efficiency across low output currents (less than 10 $\mu$ A) to high currents (200mA).

The SGM6031 family integrates an optimized hysteretic controller for low-power applications. The internal circuitry uses a time-based sampling system to reduce the average quiescent current.

#### Step-Down Converter Operation

The step-down regulator in the SGM6031 family takes input power from VIN, steps it down and provides a regulated voltage at the VOUT pin. It employs pulse frequency modulation (PFM) control to regulate the

voltage close to the desired reference voltage. The current through the inductor is controlled through internal current sense circuitry. The peak current in the inductor is controlled to maintain high efficiency of the converter across a wide input current range. The SGM6031 converter delivers an average output current of 200mA with a peak inductor current of 420mA. The step-down regulator is disabled when the voltage on VIN reaches the UVLO condition. The UVLO level is continuously monitored. The step-down regulator continues to operate in pass (100% duty cycle) mode, passing the input voltage to the output, as long as VIN is greater than UVLO and less than VIN minus IOUT times RDS(ON) of the high-side FET (that is,  $V_{IN} - I_{OUT} \times R_{DS(ON)-HS}$ ). In order to save power from being dissipated through other ICs on this supply rail, the step-down regulator can be enabled and disabled through the EN pin for systems that desire to turn off the regulated output.

### DETAILED DESCRIPTION (continued)

#### Under-Voltage Lockout (UVLO)

The under-voltage lockout keeps the part from operating until the input supply voltage rises high enough to properly operate. This ensures no misbehavior of the regulator during startup or shutdown.

#### Thermal Shutdown (TSD)

When the die temperature increases, due to a high load condition and/or a high ambient temperature; the output switching is disabled until the die temperature falls sufficiently. The junction temperature at which the thermal shutdown activates is nominally 150°C with a 15°C hysteresis.

#### Nano-Power Management and Efficiency

The high efficiency of the SGM6031 family is achieved through the proprietary Nano-power management circuitry and algorithm. This feature

essentially samples and holds all references in order to reduce the average quiescent current. That is, the internal circuitry is only active for a short period of time and then off for the remaining period of time at the lowest feasible duty cycle.

The efficiency versus output current and efficiency versus input voltage are plotted for three different output voltages for SGM6031 device in Typical Characteristics. All data points were captured by averaging the overall input current. This must be done, due to the periodic biasing scheme implemented through the Nano-power management circuitry. The input current efficiency data was gathered using a source meter set to average over at least 25 samples and at the highest accuracy sampling rate. Each data point takes a long period of time to gather in order to properly measure the resulting input current when calculating the efficiency.

SGMICRO CONFIDENTIAL  
RELEASED TO F&D,  
DO NOT DISTRIBUTE TO ANYONE

### APPLICATIONS INFORMATION

The SGM6031 family is step-down converters. Their low quiescent currents make them ideal for battery powered systems that are operated at low duty cycles in order to achieve low total power levels.

#### Setting the Output Voltage

The output voltage is set using a resistive voltage divider from the output voltage to FB pin. The voltage divider divides the output voltage down to the feedback voltage by the ratio:

$$V_{FB} = V_{OUT} \frac{R_2}{R_1 + R_2}$$

Where  $V_{FB}$  is the feedback voltage and  $V_{OUT}$  is the output voltage. Thus the output voltage is:

$$V_{OUT} = 1.0 \times \frac{R_1 + R_2}{R_2}$$

The value for  $R_2$  can be as high as 1MΩ.

For example, for a 2V output voltage,  $R_2$  is 1MΩ, and  $R_1$  is 1MΩ.

#### Detailed Design Procedure

The recommended 10μH inductor and 22μF input capacitor are used. Since no large load transients are expected, the minimum 22μF output capacitor is used. Had a large load transient been expected, we would have sized the capacitor using  $I_{TRAN} = C_{OUT} \times \Delta V_{OUT} / \Delta TIME$  where  $\Delta V_{OUT}$  is amount of  $V_{OUT}$  droop allowed for the time of the transient.

#### Inductor Selection

The internal-control circuitry is designed to control the switching behavior with a nominal inductance of 10μH ±20%. The saturation current of the inductor should be at least 25% higher than the maximum cycle-by-cycle current limit per the electrical specs table ( $I_{LIM}$ ) in order to account for load transients. Because this device is a hysteretic controller, it is a naturally stable system (single order transfer function). However, the smaller the inductor value is, the faster the switching currents are.

A list of inductors recommended for this device is shown in Table 1.

#### Output Capacitor Selection

The output capacitor is chosen based on transient response behavior and ripple magnitude. The lower the capacitor value, the larger the ripple will become and the larger the droop will be in the case of a transient response. It is recommended to use at least a 22μF output capacitor for most applications.

#### Input Capacitor Selection

The bulk input capacitance is recommended to be a minimum of 22μF ±20%. This bulk capacitance is used to suppress the lower frequency transients produced by the switching converter. There is no upper bound to the input-bulk capacitance. In addition, a high-frequency bypass capacitor of 0.1μF is recommended in parallel with the bulk capacitor. The high-frequency bypass is used to suppress the high-frequency transients produced by the switching converter.

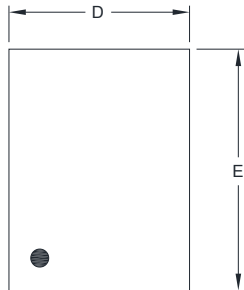
Table 1. Recommended Inductors

INDUCTANCE (μH)	DIMENSIONS (mm)	PART NUMBER	MANUFACTURER
10	2.0 × 2.5 × 1.2	DFE252012C-H-100M	Toko
10	4.0 × 4.0 × 1.7	LPS4018-103M	Coilcraft

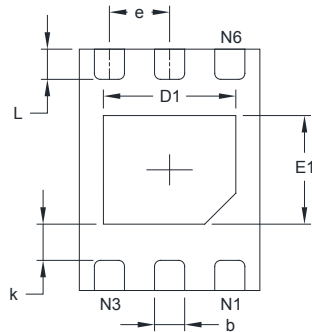


PACKAGE OUTLINE DIMENSIONS

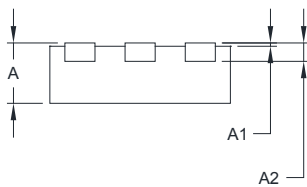
UTDFN-1.5×2-6L



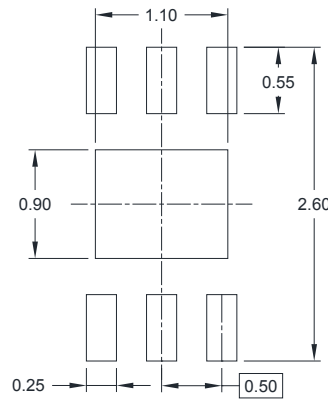
TOP VIEW



BOTTOM VIEW



SIDE VIEW



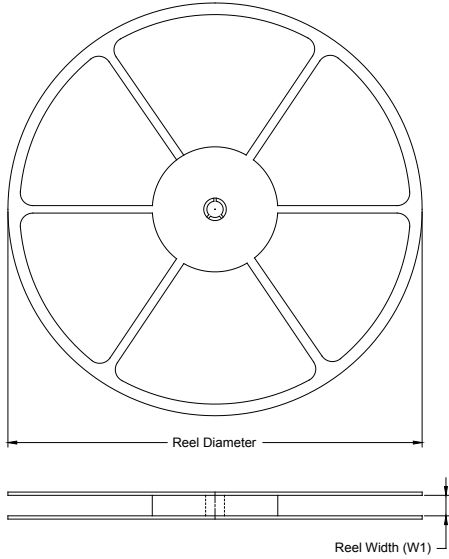
RECOMMENDED LAND PATTERN (Unit: mm)

Symbol	Dimensions In Millimeters		Dimensions In Inches	
	MIN	MAX	MIN	MAX
A	0.450	0.550	0.018	0.022
A1	0.000	0.050	0.000	0.002
A2	0.152 REF		0.006 REF	
D	1.400	1.600	0.055	0.063
D1	1.000	1.200	0.039	0.047
E	1.900	2.100	0.075	0.083
E1	0.800	1.000	0.031	0.039
k	0.200 MIN		0.008 MIN	
b	0.200	0.300	0.008	0.012
e	0.500 TYP		0.020 TYP	
L	0.200	0.300	0.008	0.012

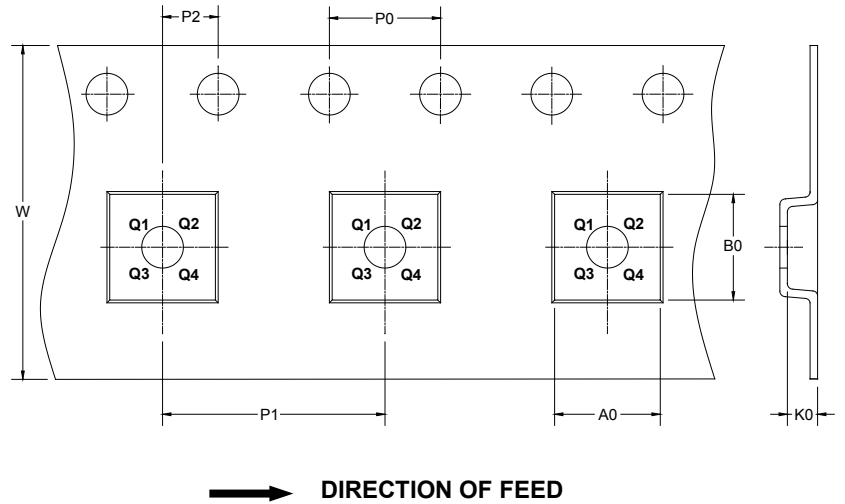
# PACKAGE INFORMATION

## TAPE AND REEL INFORMATION

### REEL DIMENSIONS



### TAPE DIMENSIONS



NOTE: The picture is only for reference. Please make the object as the standard.

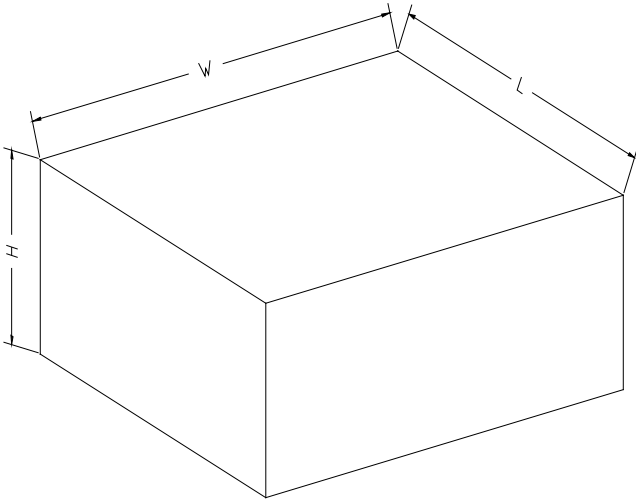
### KEY PARAMETER LIST OF TAPE AND REEL

Package Type	Reel Diameter	Reel Width W1 (mm)	A0 (mm)	B0 (mm)	K0 (mm)	P0 (mm)	P1 (mm)	P2 (mm)	W (mm)	Pin1 Quadrant
UTDFN-1.5×2-6L	7"	9.5	1.7	2.3	0.75	4	4	2	8	Q2

DD0001

# PACKAGE INFORMATION

## CARTON BOX DIMENSIONS



NOTE: The picture is only for reference. Please make the object as the standard.

## KEY PARAMETER LIST OF CARTON BOX

Reel Type	Length (mm)	Width (mm)	Height (mm)	Pizza/Carton
7" (Option)	368	227	224	8
7"	442	410	224	18

DD0002

## X-ON Electronics

Largest Supplier of Electrical and Electronic Components

*Click to view similar products for [Isolated DC/DC Converters](#) category:*

*Click to view products by [SGMICRO](#) manufacturer:*

Other Similar products are found below :

[ESM6D044440C05AAQ](#) [FMD15.24G](#) [PSL486-7LR](#) [PSR152.5-7IR](#) [Q48T30020-NBB0](#) [AVO240-48S12B-6L](#) [AVO250-48S28B-6L](#) [NAN-0505](#) [HW-L16D](#) [JAHW100Y1](#) [217-1617-001](#) [22827](#) [SPB05C-12](#) [SQ24S15033-PS0S](#) [18952](#) [19-130041](#) [CE-1003](#) [CE-1004](#) [GQ2541-7R](#) [PSE1000DCDC-12V](#) [RDS180245](#) [MAU228](#) [419-2065-201](#) [449-2075-101](#) [TME 0303S](#) [TME 0505S](#) [TME 1205S](#) [TME 1212S](#) [TME 2405S](#) [TME 2412S](#) [J80-0041NL](#) [V300C24C150BG](#) [419-2062-200](#) [419-2063-401](#) [419-2067-101](#) [419-2067-501](#) [419-2068-001](#) [DCG40-5G](#) [DFC15U48D15](#) [449-2067-000](#) [XGS-0512](#) [XGS-1205](#) [XGS-1212](#) [XGS-2412](#) [XGS-2415](#) [XKS-1215](#) [033456](#) [NCT1000N040R050B](#) [SPB05B-15](#) [SPB05C-15](#)