

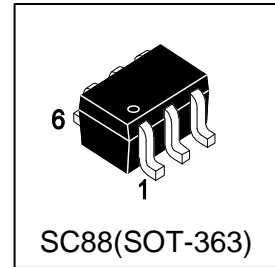
LBC847BDW1T1G

S-LBC847BDW1T1G

NPN Dual General Purpose Transistors

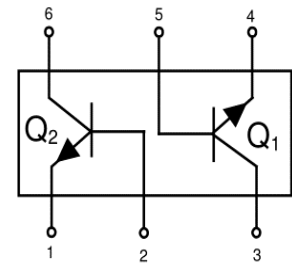
1. FEATURES

- We declare that the material of product compliance with RoHS requirements and Halogen Free.
- S- prefix for automotive and other applications requiring unique site and control change requirements; AEC-Q101 qualified and PPAP capable.



2. DEVICE MARKING AND ORDERING INFORMATION

Device	Marking	Shipping
LBC847BDW1T1G	1F	3000/Tape&Reel
LBC847BDW1T3G	1F	10000/Tape&Reel



3. MAXIMUM RATINGS(Ta = 25°C)

Parameter	Symbol	Limits	Unit
Collector–Emitter Voltage	VCEO	45	V
Collector–Base Voltage	VCBO	50	V
Emitter–Base Voltage	VEBO	6	V
Collector Current(Continuous)	IC	100	mA

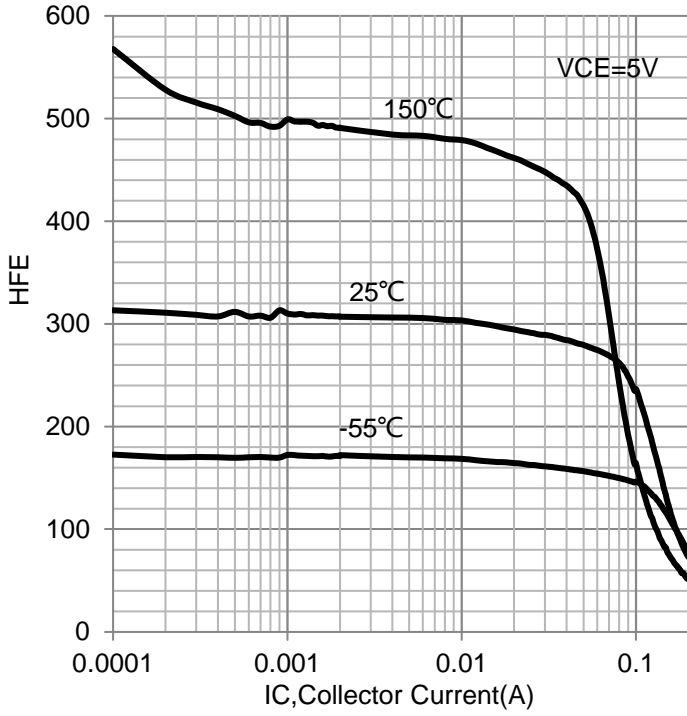
4. THERMAL CHARACTERISTICS

Parameter	Symbol	Limits	Unit
Total Device Dissipation		380	mW
FR– 5 Board, (1) T A = 25°C	PD	250	mW
Derate above 25°C		3	mW/°C
Thermal Resistance, Junction to Ambient	RθJA	328	°C/W
Junction and Storage Temperature	TJ,Tstg	-55 ~ +150	°C

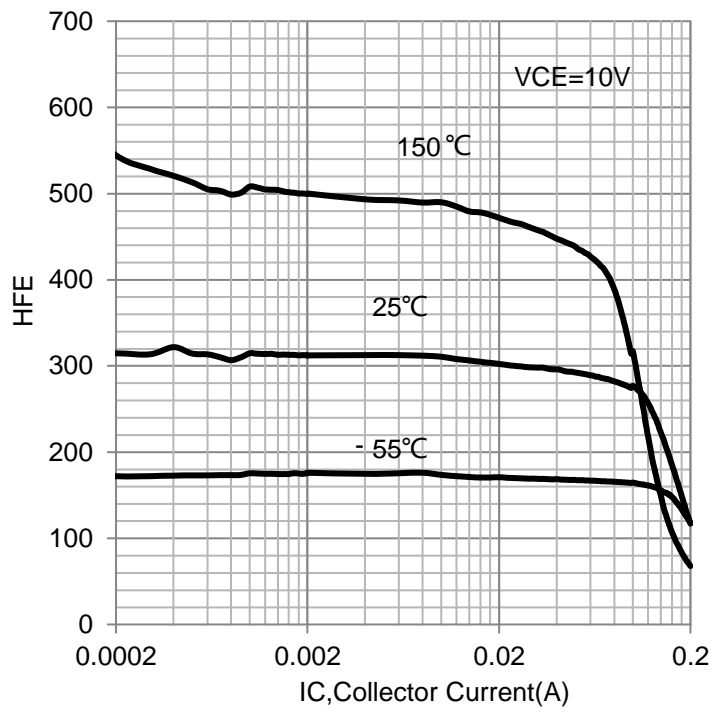
5. ELECTRICAL CHARACTERISTICS (Ta= 25°C)

Characteristic	Symbol	Min.	Typ.	Max.	Unit
OFF CHARACTERISTICS					
Collector–Emitter Breakdown Voltage (IC = 10 mA)	V(BR)CEO	45	-	-	V
Collector–Emitter Breakdown Voltage (IC = 10 μA, VEB = 0)	V(BR)CES	50	-	-	V
Collector–Base Breakdown Voltage (IC = 10 μA)	V(BR)CBO	50	-	-	V
Emitter–Base Breakdown Voltage (IE = 1.0 μA)	V(BR)EBO	6	-	-	V
Collector Cutoff Current (VCB = 30 V) (VCB = 30 V, TA = 150°C)	ICBO	- -	- -	15 5	nA μA
ON CHARACTERISTICS					
DC Current Gain (IC = 2.0 mA, VCE = 5.0 V)	hFE	200	290	450	
Collector–Emitter Saturation Voltage (IC = 10 mA, IB = 0.5 mA) (IC = 100 mA, IB = 5.0 mA)	VCE(sat)	- -	- -	0.25 0.6	V
Base–Emitter Saturation Voltage (IC = 10 mA, IB = 0.5 mA) (IC = 100 mA, IB = 5.0 mA)	VBE(sat)	- -	0.7 0.9	- -	V
Base–Emitter Voltage (IC = 2.0 mA, VCE = 5.0 V) (IC = 10 mA, VCE = 5.0 V)	VBE(on)	580 -	660 -	700 770	mV
SMALL–SIGNAL CHARACTERISTICS					
Current–Gain — Bandwidth Product (IC = 10 mA, VCE = 5.0 Vdc, f = 100 MHz)	fT	100	-	-	MHz
Output Capacitance (VCB = 10 V, f = 1.0 MHz)	Cobo	-	-	4.5	pF
Noise Figure(IC = 0.2 mA, VCE = 5.0 V, RS = 2.0 kΩ, f = 1.0 KHz, BW = 200 Hz)	NF	-	-	10	dB

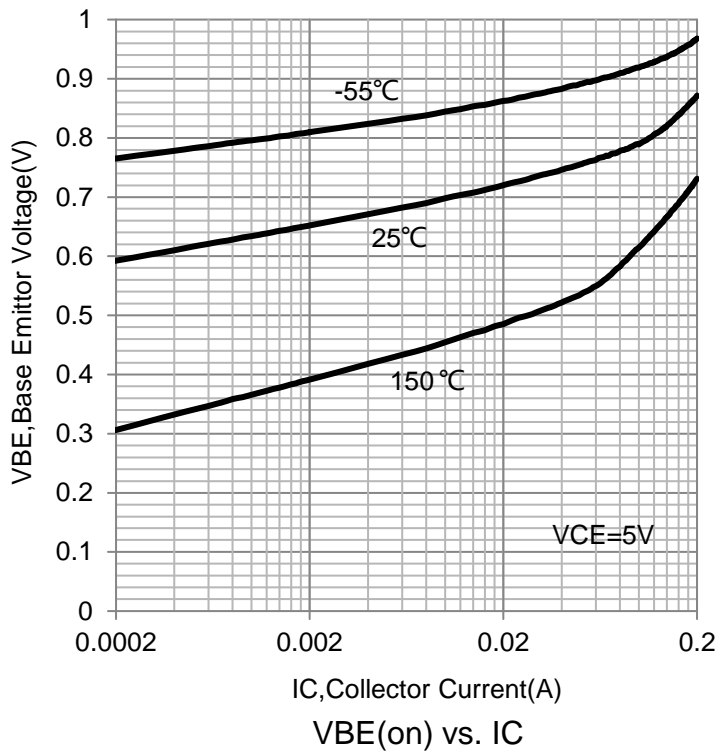
6.ELECTRICAL CHARACTERISTICS CURVES



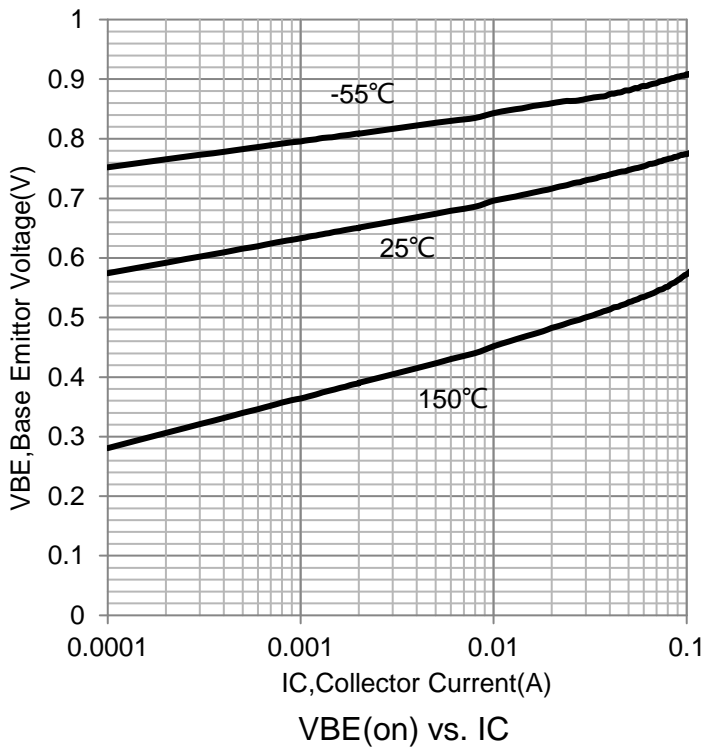
HFE vs. IC



HFE vs. IC (VCE=10V)

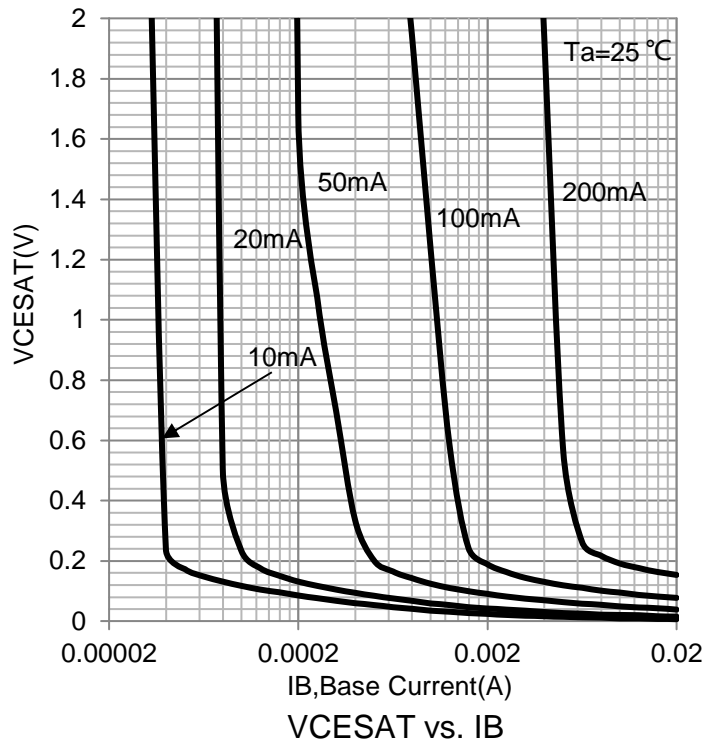
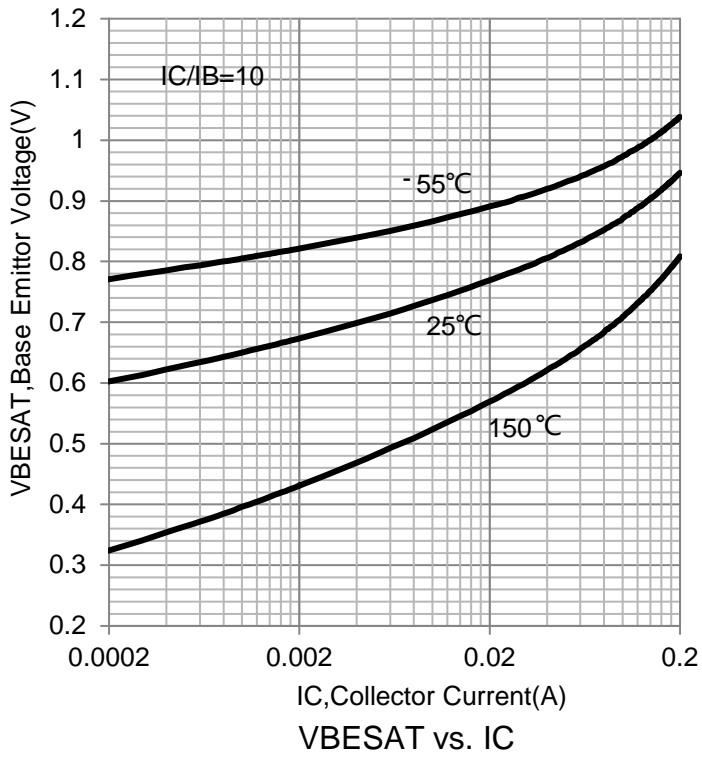


VBE(on) vs. IC



VBE(on) vs. IC

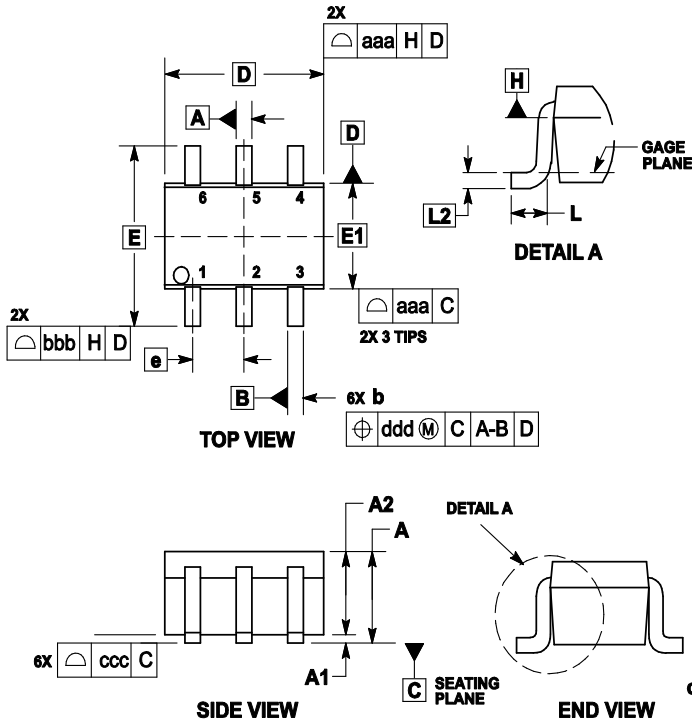
6.ELECTRICAL CHARACTERISTICS CURVES(Con.)



7. OUTLINE AND DIMENSIONS

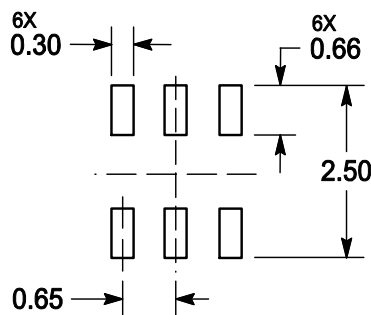
Notes:

1. DIMENSIONING AND TOLERANCING PER ANSI Y14.5M, 1982.
2. CONTROLLING DIMENSION: MILLIMETERS.
3. MAXIMUM LEAD THICKNESS INCLUDES LEAD FINISH. MINIMUM LEAD THICKNESS IS THE MINIMUM THICKNESS OF BASE MATERIAL.
4. DIMENSIONS D AND E DO NOT INCLUDE MOLD FLASH, PROTRUSIONS OR GATE BURRS.



DIM	MILLIMETERS			INCHES		
	MIN	NOM	MAX	MIN	NOM	MAX
A	---	---	1.10	---	---	0.043
A1	0.00	---	0.10	0	---	0.004
A2	0.70	0.90	1.00	0.027	0.035	0.039
b	0.15	0.20	0.25	0.006	0.008	0.01
C	0.08	0.15	0.22	0.003	0.006	0.009
D	1.80	2.00	2.20	0.07	0.078	0.086
E	2.00	2.10	2.20	0.078	0.082	0.086
E1	1.15	1.25	1.35	0.045	0.049	0.053
e	0.65 BSC			0.026 BSC		
L	0.26	0.36	0.46	0.010	0.014	0.018
L2	0.15 BSC			0.006 BSC		
aaa	0.15			0.01		
bbb	0.30			0.01		
ccc	0.10			0.00		
ddd	0.10			0.00		

8. SOLDERING FOOTPRINT



X-ON Electronics

Largest Supplier of Electrical and Electronic Components

Click to view similar products for [Bipolar Transistors - BJT category](#):

Click to view products by [Leshan manufacturer](#):

Other Similar products are found below :

[619691C](#) [MCH4017-TL-H](#) [MJ15024/WS](#) [MJ15025/WS](#) [BC546/116](#) [BC556/FSC](#) [BC557/116](#) [BSW67A](#) [HN7G01FU-A\(T5L,F,T](#)
[NJVMJD148T4G](#) [NSVMMBT6520LT1G](#) [NTE187A](#) [NTE195A](#) [NTE2302](#) [NTE2330](#) [NTE2353](#) [NTE316](#) [IMX9T110](#) [NTE63](#) [NTE65](#)
[C4460](#) [SBC846BLT3G](#) [2SA1419T-TD-H](#) [2SA1721-O\(TE85L,F\)](#) [2SA1727TLP](#) [2SA2126-E](#) [2SB1202T-TL-E](#) [2SB1204S-TL-E](#) [2SC5488A-](#)
[TL-H](#) [2SD2150T100R](#) [SP000011176](#) [FMC5AT148](#) [2N2369ADCSM](#) [2SB1202S-TL-E](#) [2SC2412KT146S](#) [2SC4618TLN](#) [2SC5490A-TL-H](#)
[2SD1816S-TL-E](#) [2SD1816T-TL-E](#) [CMXT2207 TR](#) [CPH6501-TL-E](#) [MCH4021-TL-E](#) [BC557B](#) [TTC012\(Q\)](#) [BULD128DT4](#) [JANTX2N3810](#)
[Jantx2N5416](#) [US6T6TR](#) [KSF350](#) [068071B](#)