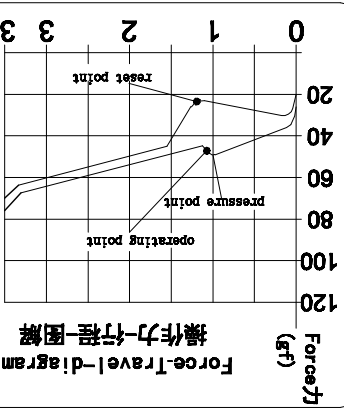
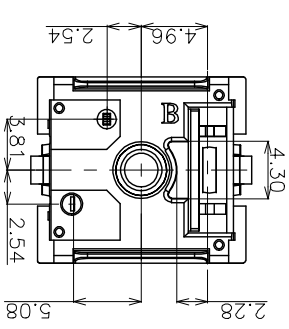
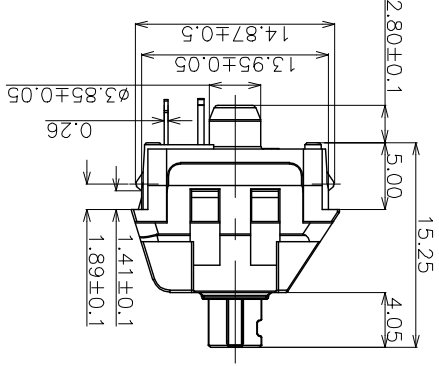
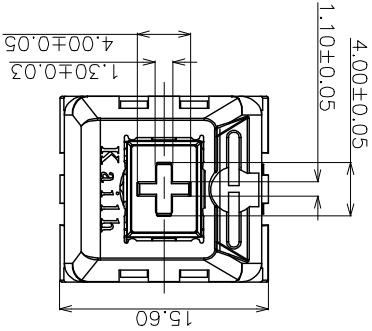
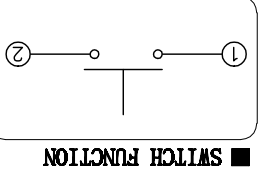
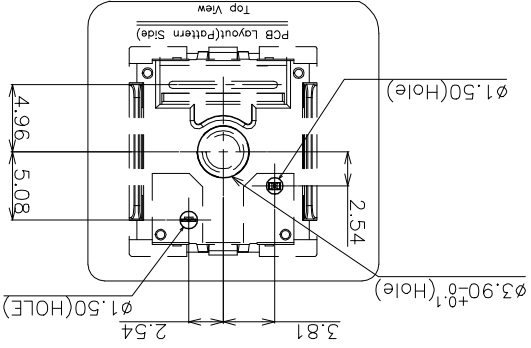
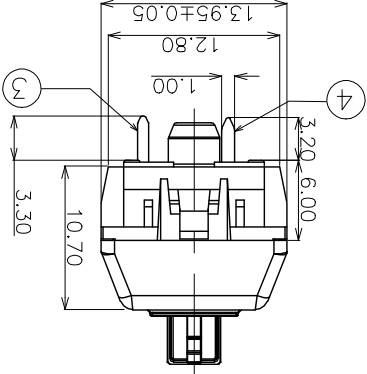


**Thick golden shaft**

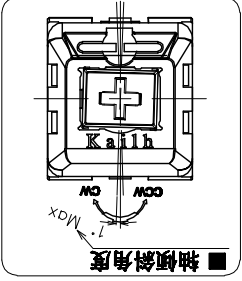


操作力-行程-圖解

Thick golden shaft



SWITCH FUNCTION



Ecn NO.	REV.	DATE.	DESCRIPTION.
	A		NEW

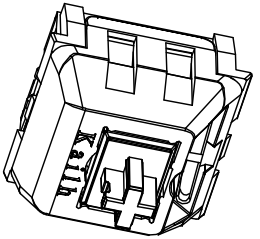
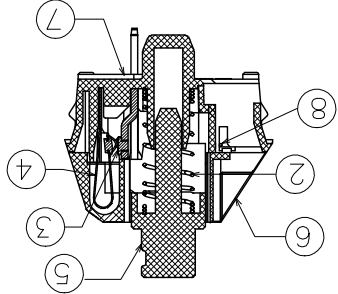
CHANGE.	CHECK.	APPRO.

TOLERANCES ARE	±.2°	DRAWING NO.	KM-PG1511-	SHEET 1 OF 1
≤.10	±.015	UNIT: mm	SCALE: 1:1	PROJ.
10<math>\leq 30</math>	±0.20	ANGLE	PART NO.	PG151101D214
30<math>\leq 100</math>	±0.30		TITLE:	PG1511 Keystroke Switch(Thick golden shaft)

APPROVALS	DATE	APPROVALS	DATE
	2017.04.13		2017.04.13
DRAWN	YIJINPING	DONGGUAN CITY KAIHUA ELECTRONICS CO.,LTD	Ka11h
CHECKED			
APPROVALS			

<Feel is allowed to have difference before and after life test>

- Specification :
- 1. Rating : 12V AC/DC max. 2V DC min. 10mA AC/DC max. 10μA DC min.
- 2. Contact Resistance : 100mΩ Max
- 3. Insulation Resistance : 100MΩ Min (DC500V)
- 4. Withstand Voltage : AC100V(50-60Hz) for 1 minute
- 5. Bounce Time : ≤5msec (at 16 in/sec. actuation speed)
- 6. Resilience Force ≥12gf
- 7. Operation Force : 50±10gf
- 8. Pre travel : 1.1±0.4mm
- 9. Total travel : 3.5±0.4mm
- 10. Operating Life : 70,000,000 Cycles(min).



## X-ON Electronics

Largest Supplier of Electrical and Electronic Components

*Click to view similar products for [Tactile Switches](#) category:*

*Click to view products by [Kailh](#) manufacturer:*

Other Similar products are found below :

[KMR633NG LFG](#) [5GTH92001](#) [5GTH9202242](#) [6426-201-11343](#) [MJ1226](#) [MJTP1109B](#) [MJTP1138EAUTR](#) [MJTP1230BL](#) [MJTPSHW](#)  
[GS6.90F300QP](#) [1-1977223-0](#) [1-1977120-4](#) [ADTSA62NV](#) [ADTSA62RV](#) [ADTSA63KV](#) [ADTSA644NV](#) [ADTSM24NVTR](#) [ADTSMW66NV](#)  
[ADTSMW67RV](#) [ATM533VTR](#) [1571300-3](#) [B3F-3123](#) [B3F-6055A](#) [B3F-B32-01-KIT](#) [1977177-8](#) [1977266-1](#) [2-1977223-4](#) [2-1977223-7](#)  
[ADTS644KV](#) [ADTSA61RV](#) [ADTSA62KV](#) [ADTSA63NV](#) [ADTSA63RV](#) [ADTSA65NV](#) [ADTSM21NSVTR](#) [ADTSM25RVTR](#)  
[ADTSM31RVTR](#) [ADTSM32NVTR](#) [ADTSM61YVTR](#) [ADTSM63SVTR](#) [ADTSM644KVTR](#) [ADTSMW64RV](#) [ADTSMW69NV](#)  
[FSMRA4JHA04](#) [GS4.70F300QP](#) [D38999/20JJ37SA](#) [TL1105B](#) [TL1105J](#) [ATH447K2Q](#) [ATM534VTR](#)