

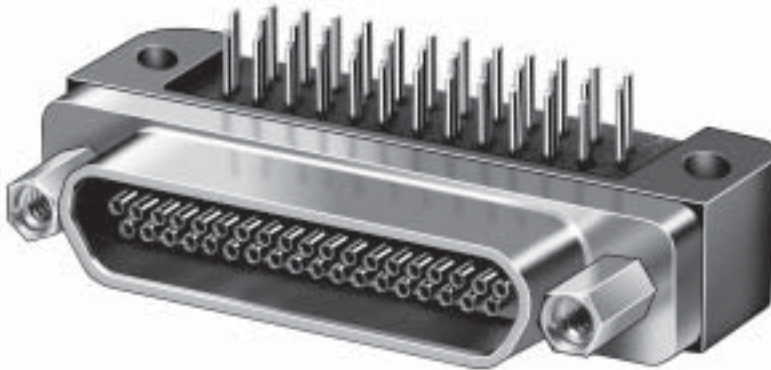


COTS Micro-D Right Angle (90°) Printed Circuit Board Connectors Metal Shell, .075 Inch Pitch

MR75 Series Right Angle PCB Connectors significantly reduce connector size and weight. They feature the same rugged construction as .100" pitch Micro-D PCB Connectors and are available with a variety of mounting hardware options to simplify installation.

- 9 thru 100 Contacts
- Tinned Terminals
- Environmentally Sealed
- Space Saving Design

See Appendix for layout information.



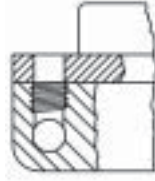
RELATED INFORMATION	
Performance Specifications	IBC*
Materials and Finishes	IBC*
Contact Arrangements	7-8
Panel Cutouts, Mounting Dimensions	9
Printed Circuit Board layouts	Z-9
* Available on the Inside Back Cover Fold-Out	

HOW TO ORDER							
Conn. Series	Style	No. of Contacts	Contact Type	Tail Length	Shell Plating	Jackpost	Board Mount Hole Option
MR75	90 – Right Angle Mount	9 15 21 25 31 37 51 100	P – Pin S – Socket	1 - .109 2 - .250	A – Cadmium B – Nickel	S - Jackpost N - No Jackpost	U - Threaded Insert installed in Board Mount Hole N - Thru Hole
Sample Part Number:							
MR75	90	37	S	1	A	S	U

COTS Micro-D Right Angle (90°) Printed Circuit Board Connectors Metal Shell, .075 Inch Pitch

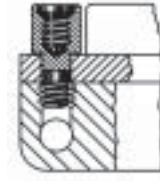


#2-56 (9-51)
#4-40 (100)

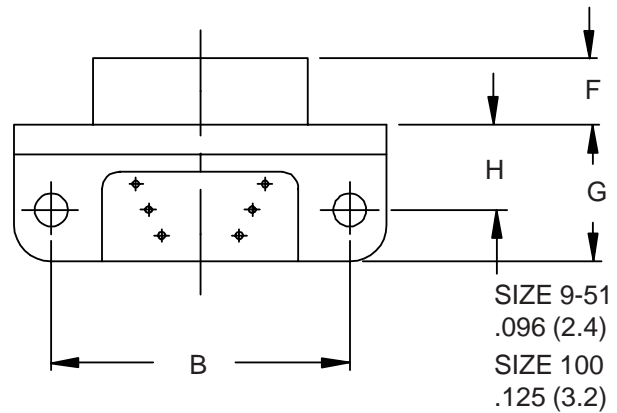
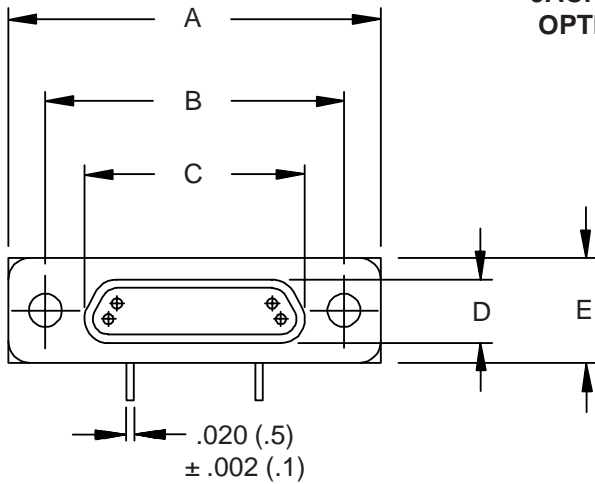


JACKPOST
OPTION N

#2-56 (9-51)
#4-40 (100)



JACKPOST
OPTION S



DIMENSIONS

Layout	A Max	B	C	D	E Max	F Max	G Max	H ± .010 (0.25)
9P	.785 (19.9)	.565 (14.4)	.335 (8.5)	.185 (4.7)	.308 (7.8)	.184 (4.7)	.400 (10.2)	.250 (6.35)
9S	.785 (19.9)	.565 (14.4)	.400 (10.2)	.251 (6.4)	.308 (7.8)	.197 (5.0)	.400 (10.2)	.250 (6.35)
15P	.935 (23.7)	.715 (18.2)	.485 (12.3)	.185 (4.7)	.308 (7.8)	.184 (4.7)	.400 (10.2)	.250 (6.35)
15S	.935 (23.7)	.715 (18.2)	.550 (14.0)	.251 (6.4)	.308 (7.8)	.197 (5.0)	.400 (10.2)	.250 (6.35)
21P	1.085 (27.6)	.865 (22.0)	.635 (16.1)	.185 (4.7)	.308 (7.8)	.184 (4.7)	.400 (10.2)	.250 (6.35)
21S	1.085 (27.6)	.865 (22.0)	.700 (17.8)	.251 (6.4)	.308 (7.8)	.197 (5.0)	.400 (10.2)	.250 (6.35)
25P	1.185 (30.1)	.965 (24.5)	.735 (18.7)	.185 (4.7)	.308 (7.8)	.184 (4.7)	.400 (10.2)	.250 (6.35)
25S	1.185 (30.1)	.965 (24.5)	.800 (20.3)	.251 (6.4)	.308 (7.8)	.197 (5.0)	.400 (10.2)	.250 (6.35)
31P	1.335 (33.9)	1.115 (28.3)	.885 (22.5)	.185 (4.7)	.308 (7.8)	.184 (4.7)	.400 (10.2)	.250 (6.35)
31S	1.335 (33.9)	1.115 (28.3)	.950 (24.1)	.251 (6.4)	.308 (7.8)	.197 (5.0)	.400 (10.2)	.250 (6.35)
37P	1.485 (37.7)	1.265 (32.1)	1.035 (26.3)	.185 (4.7)	.308 (7.8)	.184 (4.7)	.400 (10.2)	.250 (6.35)
37S	1.485 (37.7)	1.265 (32.1)	1.100 (27.9)	.251 (6.4)	.308 (7.8)	.197 (5.0)	.400 (10.2)	.250 (6.35)
51P	1.435 (36.4)	1.215 (30.9)	.985 (25.0)	.228 (5.8)	.351 (8.9)	.184 (4.7)	.490 (12.4)	.300 (7.62)
51S	1.435 (36.4)	1.215 (30.9)	1.050 (26.7)	.294 (7.5)	.351 (8.9)	.197 (5.0)	.490 (12.4)	.300 (7.62)
100P	2.170 (55.1)	1.800 (45.7)	1.384 (35.2)	.271 (6.9)	.394 (10.0)	.184 (4.7)	.660 (16.8)	.400 (10.16)
100S	2.170 (55.1)	1.800 (45.7)	1.508 (38.3)	.330 (8.4)	.394 (10.0)	.197 (5.0)	.660 (16.8)	.400 (10.16)

Metric dimensions (mm) are indicated in parentheses.

X-ON Electronics

Largest Supplier of Electrical and Electronic Components

Click to view similar products for [glenair](#) manufacturer:

Other Similar products are found below :

[GMR7580-15P4BSU](#) [DC40-10L](#) [MWDM2R-9P-4K5-18H-464A](#) [MWDM2R-25P-6K5-58M-464A](#) [805-001-16NF11-4SA](#) [687-348Z4-8-6](#)
[557-107M3-05CB](#) [450DS001N10-325](#) [MR75909P1BSU](#) [809-166-NF8](#) [103-026-012](#) [891-001-25PS-0A7-18J](#) [5M2920-3CW](#) [6000-063-0022](#)
[M28840/17AC1G3](#) [M28840/29CB1DAP1](#) [M32139/03-B06ST](#) [M39029/88-488](#) [M83513/03-C16N](#) [M83513/03-F11N](#) [M83513/04-E03N](#)
[M83513/13-B03CW](#) [M8351329-G02NW](#) [M85049130-07M](#) [M85049/1911N02](#) [M8504924-5W](#) [M85049/3610W03](#) [M85049/39-17W](#)
[M8504956-24N](#) [M85049/74-10-1](#) [M8504988-17P03](#) [M8504988-21N03](#) [M8504992-11M](#) [D38999/23YE26SN](#)
[759EA458NF32Z1732-40-102.9](#) [801-008-26NF7-25SA](#) [801-025-ARB2M6-4NA-12](#) [805-002-16M12-5SA](#) [858-003-01F](#) [860-004R-](#)
[B7MT07A-30-20](#) [G65217](#) [G8187C2010-44N](#) [G8377-21B](#) [G8801-09N](#) [G8801-25N](#) [G8859-174FNF](#) [947-432ME21-11SN](#) [947-432ME21-](#)
[35PN](#) [D3899933F21R](#) [D38999/33W11N](#)