

Remote & Local Continuity Tester

One person operation for wire and cable testing



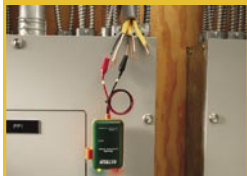
Features

- **Local continuity checking** - is accomplished by a bright flashing LED and loud pulsating beeper.
- **Remote continuity** - with the use of the remote probe, it does not tie-up two people when identifying and labeling long distance wire/cable runs.
- **Flashing remote probe** - Two lead, bi-color (red/green) LED probe allows a single user to identify up to three wires or cables at a time for correct labeling with only one trip to the other end location - cuts down on multiple trips back and forth.
- **Polarity verification** - Drives a 20mA DC current pulse through the wires or cables under test to the bi-color remote probe. This enables the technician to identify each of the wires under test at the other end of the cable run and eliminates the possibility of false high impedance readings.
- **Lightweight / Pocketsize** - clips on and hangs from the cable(s) under test without falling off.

Applications

- Electricians and Helpers
- Cable TV and Audio Systems Installers
- Alarm Technicians
- Plumbers
- HVAC Installers
- Auto Repair Technicians
- Carpenters, Handymen and Do-It-Yourself Homeowners

Continuity Tester



Use for local continuity or for remote wiring identification

Includes Remote probe with bi-color LED



If flashing RED, wiring is reversed



If flashing GREEN, wiring is properly identified

Ordering Information:

CT20 Remote & Local Continuity Tester

X-ON Electronics

Largest Supplier of Electrical and Electronic Components

Click to view similar products for [LAN/Telecom/Cable Testing](#) category:

Click to view products by [Extech](#) manufacturer:

Other Similar products are found below :

[1673606-1](#) [ULD-400-T](#) [P 3434](#) [SEFRAM95](#) [UT681HDMI](#) [UT681L](#) [TCT-1620](#) [TCT-2210](#) [TCT-680](#) [TCT-2690PRO](#) [TCT-700](#) [TESTER-](#)
[MS6811](#) [TESTER-MS6812](#) [262](#) [00533](#) [N044-000-R](#) [TM-901N](#) [TM-902](#) [TM-903](#) [LAN-1](#) [3503207](#) [AT-3500](#) [24-517](#) [CT20](#) [40180](#) [CLT600](#)
[CT70-AC](#) [DA30](#) [TG20](#) [TEP-100](#) [VDV500-820](#) [VDV501211](#) [VDV501-851](#) [VDV501-852](#) [VDV512-007](#) [VDV526-055](#) [VDV526-100](#)
[VDV770126](#) [VDV770-834](#) [VDV770-850](#) [VDV770-851](#) [LC-90](#) [T012-001-K](#) [1490530-1](#) [1490532-1](#) [1490533-1](#) [T040-001-DP](#) [T040-001-](#)
[HDMI](#) [UT681C](#)