

# kick-start for d-u3G 1.13 by itbrainpower.net

ARDUINO & RASPBERRY PI 3G / UMTS shield (micro)

<b>1. HARDWARE</b> .....	2
1.1 d-u3G shield PIN DEFINITION .....	2
1.2 LOGICAL WIRING d-u3G shield.....	3
1.2.1 General information .....	3
1.2.2 Digital PINS connection correspondence with Arduino and Raspberry PI .....	3
1.2.3 Connecting with UNO (or any ATmega 328 shield) .....	3
1.2.4 Connecting with MEGA2560 (SOFTWARE SERIAL mode) .....	4
1.2.5 Connecting with DUE or MEGA2560 (HARDWARE SERIAL mode).....	4
1.2.6 Connecting with Raspberry PI .....	5
1.3 POWERING the d-u3G shield .....	5
1.3.1 General powering information .....	5
1.3.2 "Portable stand-alone Lithium Polymer battery" powering schema .....	6
1.3.3 "WITH Lithium Polymer battery" configuration and VIA Vin (+5V) .....	6
1.3.4 "WITH Lithium Polymer battery" configuration and VIA USB.....	6
1.3.5 "ONLY Lithium Polymer battery charger" configuration .....	6
1.3.6 "WITHOUT Lithium Polymer battery" powering schema (DDRV) .....	6
1.4 SERIAL (and SERIAL USB bridge) communication .....	7
1.5 SIM card support .....	7
1.6 RAMDISK support.....	7
1.7 LEDs .....	7
<b>2. Debugging (your) AT CHAT</b> .....	8
2.1 Preparation phase .....	8
2.2 Program AT chat debugging how-to.....	8
<b>3. Software examples and code support</b> .....	8
3.1 d-u3G series 3G / UMTS shield (micro) kickstart for Arduino .....	8
3.2 d-u3G series 3G / UMTS shield (micro) ARDUINO examples list .....	8
3.3 d-u3G series 3G / UMTS shield (micro) Raspberry PI examples list.....	9
3.4 Quectel UG95 AT command manual .....	9
<b>4 General/legal software/hardware considerations</b> .....	9

# kick-start for d-u3G 1.13 by itbrainpower.net

ARDUINO & RASPBERRY PI 3G / UMTS shield (micro)

## 1. HARDWARE

### 1.1 d-u3G PIN DEFINITION

#### POWERING, SERIAL and CONTROL INTERFACE

In the left edge of the top PCB side, bottom to top:

1. RX(TXD) - 3G SHIELD SERIAL RX (TXD) - input
2. TX(RXD) - 3G SHIELD SERIAL TX (RXD) - output
3. RESET - 3G SHIELD RESET - input, active HIGH\*
4. POWER ON - 3G SHIELD POWER ON - input, active HIGH\*
5. Vusb - POWER PIN - output +5V (USB +5V)
6. Vin - POWER PIN - input +5V for LiPol charger only
7. Vcc - POWER PIN - input/output +4V\*\*
8. GND - POWER and DIGITAL GROUND
9. RI - 3G SHIELD RING INDICATOR - output
10. STATUS - 3G SHIELD STATUS - output
11. RTS - 3G SHIELD READY TO SEND - output
12. CTS - CLEAR TO SEND - input
13. SLP - SLEAP - input, active HIGH

\* min. 200msec. pulse  
\* read POWERING SECTION, below

#### BATTERY and ANTENNA

In the right edge of the top PCB side, bottom to top:

1. + LiPol - connect + pole of the LiPol battery
2. - LiPol - connect - pole of the LiPol battery
3. 3G/UMTS antenna connector - uFL or SMA F

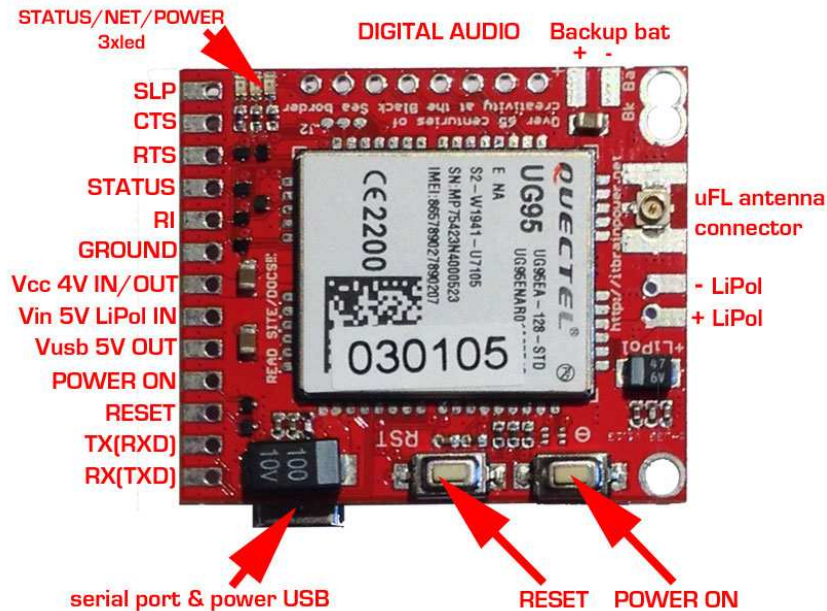


Image 1(TOP)

#### DIGITAL AUDIO INTERFACE\*\* and BACKUP BATTERY

In the top edge of the top PCB side, left to right:

- 1-8. DIGITAL AUDIO interface\*\*\*
  9. BkBat+ : Backup battery + pole\*\*\*\*
  10. BkBat- : Backup battery - pole
- \*\*\* pin2 on DIGITAL AUDIO interface can be used as secondary GND connection on the board.

\*\*\*\* WARNING! For non rechargeable battery (eg. Silver Oxide coin cell): insert one diode (1N4148) between the battery plus pole and the 3G shield "BkBat+" pad. 1N4148 anode must be connected with the battery.

#### SWITCHES

In the bottom edge of the top PCB side, left to right:

1. RESET - 3G SHIELD RESET
2. POWER ON - 3G SHIELD POWER ON

#### SIM SOCKET AND USB PORT

In the bottom PCB side, left to right:

1. SIM SOCKET - hinge type STANDARD SIZE 1.8-3V SIM/USIM supported
2. USB PORT - micro USB type A - used for POWERING and as SERIAL to USB bridge adapter

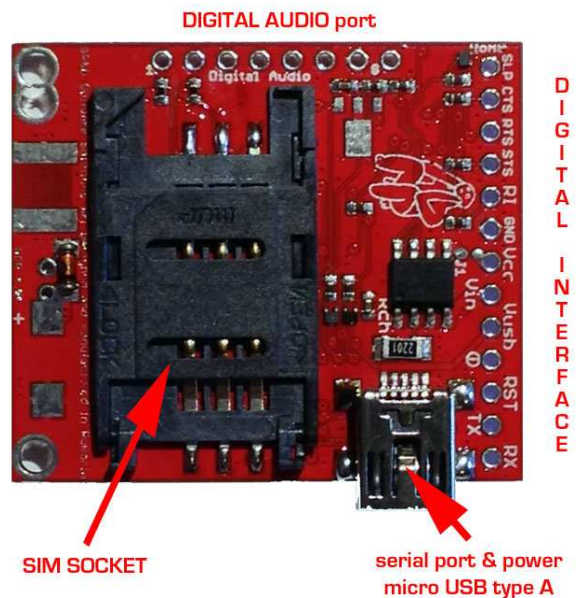


Image 1(bottom)

## 1.2 LOGICAL WIRING d-u3G shield

### 1.2.1 General information

d-u3G digital interfaces:

- PIN1 RX(TXD) - SERIAL RX (TXD) - input
- PIN2 TX(RXD) - SERIAL TX (RXD) - output
- PIN3 RESET - 3G SHIELD RESET - input, active HIGH
- PIN4 POWER ON - POWER ON - input, active HIGH
- PIN8 GND - POWER and DIGITAL GROUND
- PIN9 RI - 3G SHIELD RING INDICATOR - output
- PIN10 STATUS - 3G SHIELD STATUS - output
- PIN11 RTS - 3G SHIELD READY TO SEND - output
- PIN12 CTS - CLEAR TO SEND - input
- PIN13 SLP - SLEAP - input, active HIGH

are 5V, 3V and 2.8V compliant (you can wire/interface them directly to your Arduino micro-controller / board).

**WARNING: WIRING the d-u3G-gsm board with u-controllers/boards must be made with boards UNPOWERED!!**

d-u3G POWERING pins:

- PIN5 Vusb - POWER PIN - output +5V (USB +5V)\*
- PIN6 Vin - POWER PIN - input +5V for LiPol charger only
- PIN7 Vcc - POWER PIN - input/output +4V\*\*
- PIN8 GND - POWER and DIGITAL GROUND

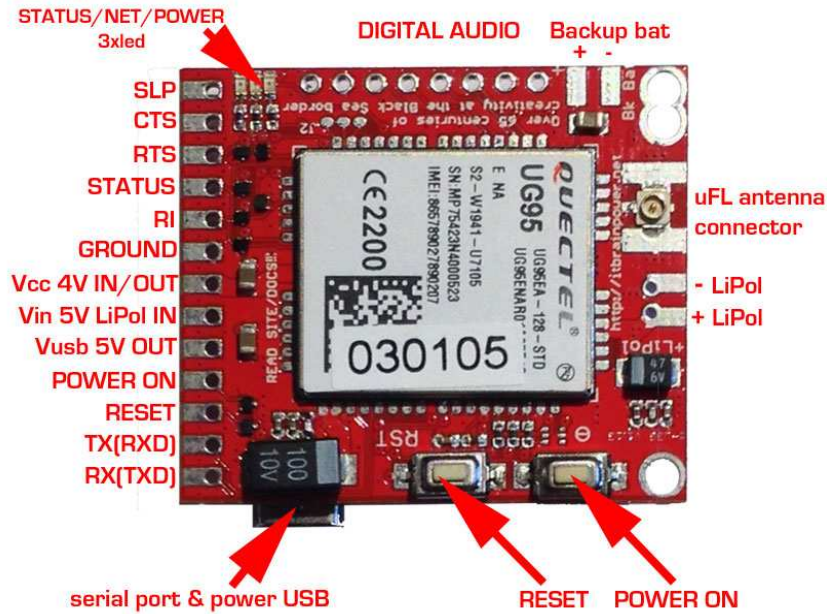


Image 1 (top)

\* **WARNING: PIN5 (Vusb) it is directly connected to the 5V USB bus!!!**

\*\* **READ POWERING SCHEMAS/OPTIONS bellow(chapter 1.3)**

### 1.2.2 Digital PINS connection correspondence with Arduino and Raspberry PI

d-u3G shield PIN NAME	UNO/MINI/NANO (Mega328)	MEGA2560 using software serial	DUE/MEGA2560 using hardware serial	Raspberry PI B+ or Raspberry PI II
1. RX(TXD)	D3	D3	D18(TX1)	PIN10 RXD0 *
2. TX(RXD)	D2	D10	D19(RX1)	PIN08 TXD0 *
3. RESET	D6	D6	D6	PIN18
4. POWER ON	D7	D7	D7	PIN16
8. GND	GND	GND	GND	PIN04 or 14
10. STATUS	D5	D5	D5	PIN 12

\* Raspberry PI: do not wire 1 and 2 (serial TX and RX) if USB communication is used!

### 1.2.3 Connecting with UNO (or any ATmega 328 shield)

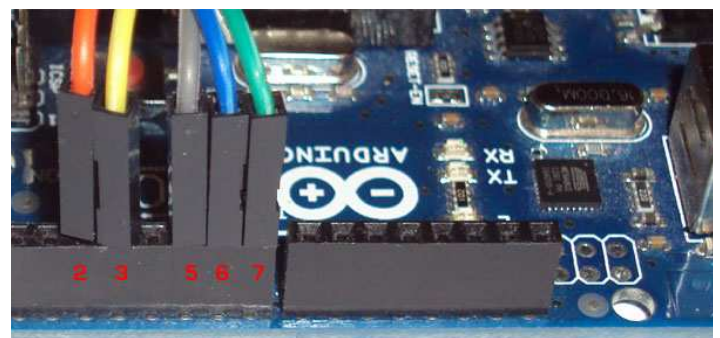
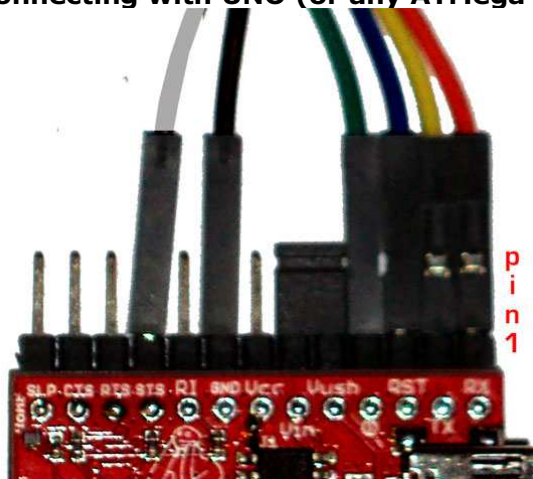


Image 2

In this case, SoftwareSerial (Arduino environment emulates in software a second serial port) configuration it's the only option available. The Arduino USB connector it is placed in the right side of the Arduino image.

d-U3G PIN1(RX) ←(ORANGE\*) WIRE→ Arduino PIN D3(TX soft)

d-U3G PIN2(TX) ←(YELLOW\*) WIRE→ Arduino PIN D2(RX soft)

d-U3G PIN3(RST) ←(BLUE\*) WIRE→ Arduino PIN D6

d-U3G PIN4(POWER ON) ←(GREEN\*) WIRE→ Arduino PIN D7

d-U3G PIN8(GND) ←(BLACK\* \*\*) WIRE→ Arduino GND

d-U3G PIN10(STATUS) ←(GREY\*) WIRE→ Arduino PIN D5

\*COLORS corresponding with example images.

\*\* GND wire (BLACK) not shown in right image, must be inserted in Arduino header marked as GND  
**JUMPER placed between PIN5[Vusb] and PIN6[Vin] must NOT BE installed! It is valid ONLY for "WITH Lithium Polymer battery" configuration and POWERING via USB schema!!!**

#### 1.2.4 Connecting with MEGA2560 (SOFTWARE SERIAL mode)

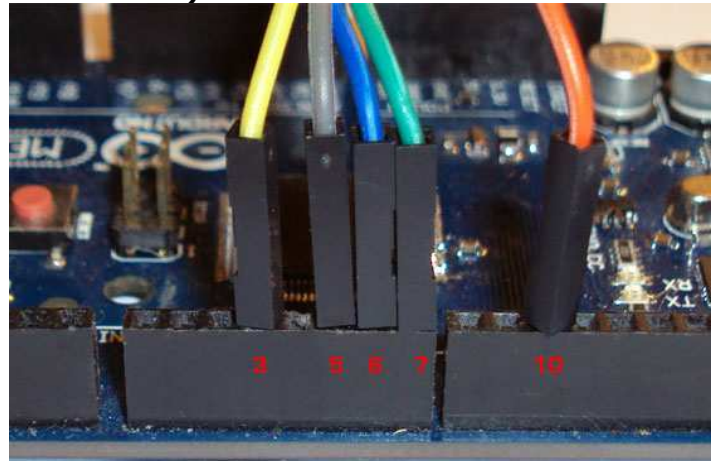
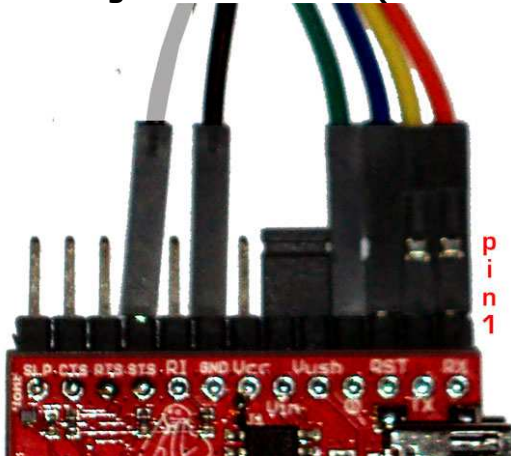


Image 3

SoftwareSerial Mode (RX soft=>10,TX soft=>3) –only ORANGE has changed comparing with UNO(Image2).

The Arduino USB connector it is placed in the right side of the Arduino image.

d-U3G PIN1(RX) ←(ORANGE\*) WIRE→ Arduino PIN D10(TX soft)

d-U3G PIN2(TX) ←(YELLOW\*) WIRE→ Arduino PIN D3(RX soft)

d-U3G PIN3(RST) ←(BLUE\*) WIRE→ Arduino PIN D6

d-U3G PIN4(POWER ON) ←(GREEN\*) WIRE→ Arduino PIN D7

d-U3G PIN8(GND) ←(BLACK\* \*\*) WIRE→ Arduino GND

d-U3G PIN10(STATUS) ←(GREY\*) WIRE→ Arduino PIN D5

\*COLORS corresponding with example images.

\*\* GND wire (BLACK) not shown in right image, must be inserted in Arduino header marked as GND  
**JUMPER placed between PIN5[Vusb] and PIN6[Vin] must NOT BE installed! It is valid ONLY for "WITH Lithium Polymer battery" configuration and POWERING via USB schema!!!**

#### 1.2.5 Connecting with DUE or MEGA2560 (HARDWARE SERIAL mode)

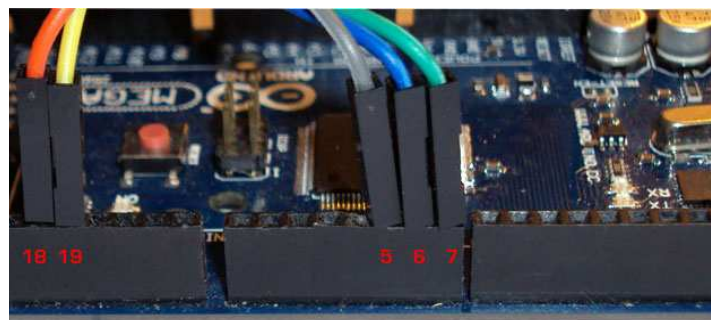
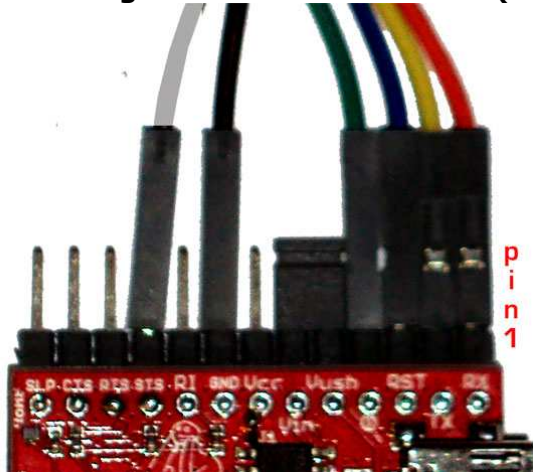


Image 4

HardwareSerial Mode \*\*\* (RX1=>19, TX1=>18) –only ORANGE and YELLOW wires has changed comparing with UNO(Image2). The Arduino USB connector it is placed in the right side of the Arduino image.

d-U3G PIN1(RX) ←(ORANGE\*) WIRE→ Arduino PIN D18(TX1)

d-U3G PIN2(TX) ←(YELLOW\*) WIRE→ Arduino PIN D19(RX1)

d-U3G PIN3(RST) ←(BLUE\*) WIRE→ Arduino PIN D6

d-U3G PIN4(POWER ON) ←(GREEN\*) WIRE→ Arduino PIN D7

d-U3G PIN8(GND) ←(BLACK\* \*\*) WIRE→ Arduino GND

d-U3G PIN10(STATUS) ←(GREY\*) WIRE→ Arduino PIN D5

\*COLORS corresponding with example images.

\*\* GND wire (BLACK) not shown in right image, must be inserted in Arduino header marked as GND

\*\*\* add/un-comment following preprocessor definition in software examples: #define HARDWARESERIAL  
JUMPER placed between PIN5[Vusb] and PIN6[Vin] must NOT BE installed! It is valid ONLY for "WITH Lithium Polymer battery" configuration and POWERING via USB schema!!!

### 1.2.6 Connecting with Raspberry PI

Please see: <http://itbrainpower.net/images/3G-SHIELD-RPI-logical-wiring-d-u3G.png>

## 1.3 POWERING the d-u3G shield

### 1.3.1 General powering information

**In the right edge of the top PCB side:**

PIN5 Vusb - POWER PIN - output +5V (USB +5V)\*  
 PIN6 Vin - POWER PIN - input +5V for LiPol charger only\*\*  
 PIN7 Vcc - POWER PIN - input/output +4V\*\*\*  
 PIN8 GND - POWER and DIGITAL GROUND

**In the right edge of the top PCB side, bottom to top:**

1. + LiPol - connect + pole of the LiPol battery\*\*\*\*
2. + LiPol - connect - pole of the LiPol battery\*\*\*\*

\* **PIN5 (Vusb)** it is directly connected to the **5V USB bus!** Use it **ONLY** if shield it is **used in "WITH Lithium Polymer battery" configuration and VIA USB powering.** Else leave it **unconnected.**

\*\* **PIN6 (Vin)** INPUT +5V for LiPol charger. Must be connected to +5V source **ONLY** if shield it is **used in "WITH Lithium Polymer battery" configuration.**

\*\*\* PIN7 (Vcc) role / behavior:

- a. **INPUT POWER +4V typical** when the shield it is used in **"WITHOUT Lithium Polymer battery" configuration.** Use power supply (switching power supply is recommended) capable of voltage between **3.6V->4.2V and current more than 1.5A -eg.: our qSPS101#4V(DDR).**
- b. **OUTPUT POWER** when the shield it is used in **"WITH Lithium Polymer battery" configuration.**

In this case, **Pin7** it is connected to the **+pole** of the **LiPol battery** and it is capable to **provide power (with typical voltage between 3.4->4.1V, but depending on used battery specifications)** to external devices. If you do not plan to power additional devices, **leave it unconnected.**

\*\*\*\* If you want to use a Lithium Polymer battery, we recommend to you to solder a PCB JST 2POLE connector. Take care at battery connector polarity!

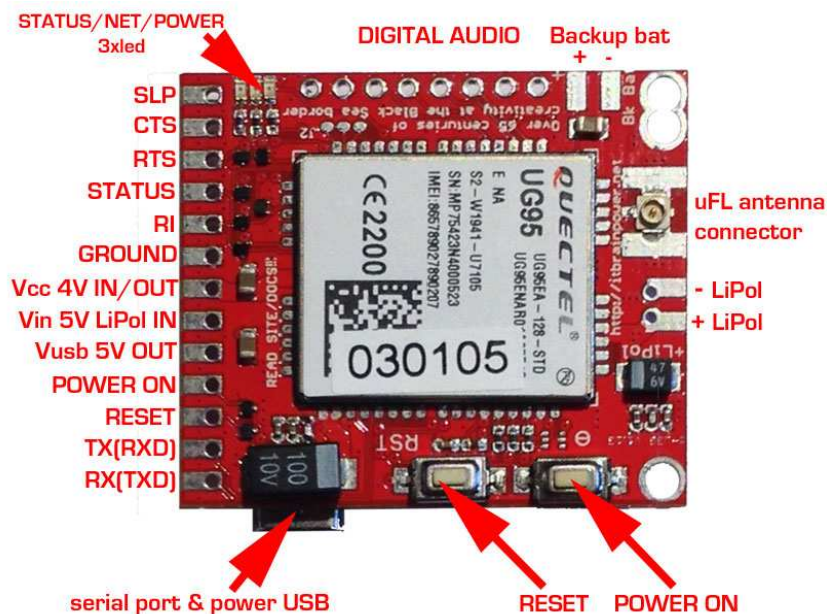


Image 5

### SPECIAL SAFETY WARNINGS:

- **WIRING MUST BE MADE WITHOUT BOARD/BOARDS POWERED!**
- **DO NOT PLACE THE POWERING PINS IN SHORT CIRCUIT!**
- **DOUBLE CHECK THE CONNECTIONS BEFORE POWER THE CIRCUIT!**
- **DO NOT INVERCE POLARITIES!**
- **USE ONLY Lithium Polymer battery EQUIPED WITH SHORT-CIRCUIT, OVER-CHARGING AND REVERSE POLARITY PROTECTION!**
- **SIM CARD INSERION/REMOVAL MUST BE MADE BOARD/BOARDS UNPOWERED!**

**BAD or UNPROPER WIRING/HANDLING/USAGE** of the hardware can conduct to **SERIOUS DAMAGES!** You are the **ONLY RESPONSIBLE** for hardware handling, usage and wiring!!!

### 1.3.2 "Portable stand-alone Lithium Polymer battery" powering schema

Just plug a fully charged Lithium Polymer battery in to the LiPol battery connector. DO NOT connect/wire **Pin6 [Vin]**, **Pin7 [Vcc]** and **Pin5 [Vusb]** (leave them unconnected)! The shield can be started pressing for more than 200ms on the "POWER ON" switch or by external logic (see chapter 1.2 and software examples).  
Observation: the USB communication function (SERIAL to USB bridge) can be used even in this case.

### 1.3.3 "WITH Lithium Polymer battery" configuration and VIA Vin (+5V) powering schema

Leave unconnected: **Pin7 [Vcc]** and **Pin5 [Vusb]**.

Wire/connect:

**Pin6[Vin] ←WIRE→ +5V source** (Eg.: UNO +5V header or +5V connector on power supply, other...)

**Pin8[GND] ←WIRE→ GND** (Eg.: UNO GND header or GND connector on power supply, other...)

Finally, plug a Lithium Polymer battery in to the LiPol battery connector.

Observation:

- the USB logical communication (SERIAL to USB bridge) can be used even in this case.
- the USB 5V power line it is **SEPARATED** from the shield/controller.
- we recommend the usage of g-SPS 5V adapter board v1.01 by itbrainpower.net [P/N gSPS101#5V(LIPOL)]

### 1.3.4 "WITH Lithium Polymer battery" configuration and VIA USB powering schema

Leave unconnected: **Pin7 [Vcc]**.

Connect/place jumper between:

**Pin6[Vin] ←JUMPER→ Pin5 [Vusb]** (see jumper in **Image4**)

Finally, plug a Lithium Polymer battery in to the LiPol battery connector.

Observation: the USB logical communication (SERIAL to USB bridge) can be used. The USB 5V power line **POWERS** the shield/controller.

### 1.3.5 "ONLY Lithium Polymer battery charger" configuration

Same as 1.3.3 [VIA Vin +5V powering] or 1.3.4 [VIA USB powering], but with any other logical interfacing / wire connections (Eg.: SERIAL, RESET, other..) removed. The d-u3G shield acts as regular Lithium polymer battery charger. It is NOT necessary to start the shield from the "POWER ON" switch.

### 1.3.6 "WITHOUT Lithium Polymer battery" powering schema (DDRV)

Leave unconnected: **Pin6[Vin]** and **Pin5 [Vusb]**.

Wire/connect:

**Pin7 [Vcc] ←WIRE→ +4V source** (Eg.: +4V connector on power supply, other...)

**Pin8[GND] ←WIRE→ GND** (Eg.: GND connector on power supply, other...)

**DO NOT PLUG (UNPLUG ANY) Lithium Polymer battery in to the LiPol battery connector!**

Observation:

- the USB logical communication (SERIAL to USB bridge) can be used even in this case.
- the USB 5V power line it is **SEPARATED** from the shield/controller.
- used power supply (switching power supply recommended) must be supply voltage between 3.6V->4.2V, 4V recommended, and to drive 0.8A and capable for more than 1.5A in pulses/spikes.
- we recommend the usage of g-SPS 4V adapter board v1.01 by itbrainpower.net [P/N gSPS101#4V(DDRV)]

## 1.4 SERIAL (and SERIAL USB bridge) communication

Your d-u3G shield came with special auto-baud feature enabled (the speed of communication is determined at first AT command detection w/o external intervention) and 8N1 settings. The board works off the shelf with your code, without the needs for setting the module communication seed first! This feature performs in same manner for TXD/RXD SERIAL connection over 2.8-3-5V compliant interface and in connection over USB.

Communication speed performed in code examples:

- d-u3G series 3G / UMTS shield (micro) examples list >> 9600bps, 8N1 \*
- d-u3G series 3G / UMTS shield (micro) Raspberry PI shield examples >> 19200bps, 8N1
- d-u3G series software kickstart for Arduino >> 9600bps, 8N1 \*\*
- d-u3G-raspian-ppp-1.0.tar.gz (Raspian PPP and routing utility) >> 115200bps, 8N1

IMPORTANT! ARDUINO ENVIRONMENT Serial Monitor speed:

\* 57600bps

\*\* 57600bps

### Raspberry PI connectivity support:

RPI via SERIAL connection >> Use vi, mcedit or other editor and comment last "/etc/inittab" line:

```
#T0:23:respawn:/sbin/getty -L ttyAMA0 115200 vt100
```

reboot your RPi: "reboot" or "restart now"

RPI via USB connection >> Native supported starting with 2015-02-16-raspbian-wheezy. If something goes wrong, you can still use the 2015-02-16 version, used by us in tests. You can download it from here:

<http://itbrainpower.net/a-gsm/downloadables/2015-02-16-raspbian-wheezy.zip>

## 1.5 SIM card support

Standard size 1.8 and 3V 3G SIM/USIM cards usage is supported [see **Image 1(bottom)**].

**WARNING: SIM cards insertion/removal must be made with boards UNPOWERED!!**

## 1.6 RAMDISK support

The internal RAMDISK is accessed "via AT commands" and does not need the load for additional libraries and is limited to read/write/delete small files that provides support for "on the run" save/access application parameters and variables (one suggestion: save local data, when your project needs to sleep-low energy mode-using AT+CFUN=4).

## 1.7 LEDs

d-u3G shield it is equipped with 3 LEDs (yellow – STATUS, GREEN for GSM MODE and RED for LiPol charging) that signalize the working state of the GSM modem.

STATUS LED (yellow) lights when the UG95 modem is ON.

GSM MODE LED (green) blinks twice per second when the UG95 it is NOT registered into the network and blinks around 1.5 seconds when the modem is registered.

LiPol CHARGING (red) lights on when LiPol battery is charging.

### HINTS:

- if the STATUS LED blinks (once at 4-10 seconds) or does not lights on shield POWER ON. This may happen if:
  - "WITHOUT Lithium Polymer battery" powering schema (DDRV) as described in chapter 1.3.6 it is used, and your power supply it is not capable to provide the current needed. You may check / change your power supply or connecting wires or solders or you can try to solder one 470->2200uF/6V Low ESR electrolytic capacitor on LiPol pads (take care on the polarity).
  - Any "WITH Lithium Polymer battery" powering schema, if the battery it is very / deep discharged, and the +5V source connected to Vin can provide only small amount of current. You may wait some time in order to give to LiPol battery the chance to be charged a little bit more, or you may change the +5V source connected to Vin with one capable to provide more current.
- if the GSM MODE LED does NOT acquire the "3G register" mode (blinks twice per second). This may happen on following reasons:
  - SIM's PIN code has not been removed. Remove the SIM PIN code checking.
  - The 3G signal is too low at the working place. Try to relocate your board, or replace the antenna with a better one.
  - Your 3G provider has no service at the working place. Change with SIM/USIM from other 3G provider.
  - Your SIM has no credit. Add some credit to your SIM.

## 2. Debugging (your) AT CHAT

### 2.1 Preparation phase

- A1. Download USB 2 SERIAL BRIDGE DRIVERS (choose the adapted one to your computer operating system): <http://itbrainpower.net/micro-3G-shield-module-du3G/3G-UMTS-shield-board-module-RaspberryPI-Arduino-d-u3G-features-code-examples>
- A2. Download serial terminal software. We like TeraTermPro (google it for).
- A3. Connect the d-u3G board with USB cable to your computer. Follow install procedure, if needed.
- A4. Open the terminal application and connect to the d-u3G com port
- A5. Set the proper communication speed: 9600bps, 8N1
- A7. Check desired AT commands.
- A6. Close the terminal software. Disconnect the cable.

### 2.2 Program AT chat debugging how-to

1. Connect the USB cable to your computer.
2. Open the serial (com/tty) terminal application
3. Check if proper serial port (described in A4) is chosen in the terminal software
4. Check the communication speed (9600, 8N1)

From this moment, you will be able debug the AT exchange between your preferred u-controller and the d-u3G board. Run your Arduino/RaspberryPI code. The AT exchange will be replicated into the terminal window.

This option it is not available for d-u3G. Instead, use the precompiled directive

```
#define atDebug
```

in the code based on our libraries/examples. In this way, the AT CHAT between the Arduino u-controller and d-u3G shield it is debugged on the Arduino "Serial Monitor". You may like to take a look at sendATCommand and recUARTDATA functions defined in du3G\_basic\_lbr.ino.

## 3. Software examples and code support

### 3.1 d-u3G series 3G / UMTS shield (micro) kickstart for Arduino

Interactive interface with you're d-u3G shield (micro). You can dial, pick up, hang up calls, read, delete or send SMSs, see the signal strength, read/write the RTC(real time clock), enable / disable the synchronization of the RTC, read modem serial(IMEI), SIM serial(IMS), GSM and GPRS registration status, perform DTMF tasks, GET and POST (with or without SSL encryption) requests and even interact with the modem trough AT commands, directly from the application. More features will be added (your contribution will be welcomed!).

Download from (module's IMEI & your email address needed):

<http://itbrainpower.net/micro-3G-shield-module-du3G/3G-UMTS-shield-board-module-RaspberryPI-Arduino-d-u3G-features-code-examples>

Uncompress the archive file into suggested folder("dU3G\_kickstartversion"). Dive to that folder. Do not remove any file fro the folder. Double click on the "dU3G\_kickstartversion.ino" file. ARDUINO environment will start.

Chose your Arduino board, serial communication port. Compile the sketch and upload it to your board.

Open the ARDUINO "Serial Monitor" and chose 57600bps speed.

IMPORTANT!

Before compiling, select in the Arduino environment, for editing, "user\_GPRS\_HTTP\_PARS.h" file. You may want to change the APN related settings in order to fit your 3G provider settings.

Be sure you're made proper setup for your board and d-u3G shield. Used SIM card must have the PIN checking procedure removed.

### 3.2 d-u3G series 3G / UMTS shield (micro) ARDUINO examples list

Compliable code (IP DATA TRANSFER w or wo SSL, DTMF, SMS, CALL handling, file handling, and other) examples for you're d-u3G board and Arduino. Can be used as foundation starter for your 3G projects. Compile and running directives inside the code and associated txt files. Set the ARDUINO "Serial Monitor" at 57600bps. Speed settings for debug via USB (if desired): 9600bps, 8N1.

Download from (module's IMEI & your email address needed):

<http://itbrainpower.net/micro-3G-shield-module-du3G/3G-UMTS-shield-board-module-RaspberryPI-Arduino-d-u3G-features-code-examples>

<http://itbrainpower.net/micro-3G-shield-module-du3G> © R&D Software Solutions srl v0.92 2015, August



### 3.3 d-u3G series 3G / UMTS shield (micro) Raspberry PI examples list

Running code (IP DATA TRANSFER w or w/o SSL, DTMF, SMS, CALL handling, file handling, and other) examples for you're d-u3G board and Raspberry PI. Can be used as foundation starter for your 3G projects. Compile and running directives inside the code and associated txt files.

~~Speed settings for debug via USB (if desired): 19200bps, 8N1.~~

IMPORTANT:

- some py files needs to run under root permission. You can try something like: `sudo python xyz.py`
- you may chose between SERIAL and USB communication, in order to fit to your hardware interfacing option (see inside py files)

Download from (module's IMEI & your email address needed):

<http://itbrainpower.net/micro-3G-shield-module-du3G/3G-UMTS-shield-board-module-RaspberryPI-Arduino-d-u3G-features-code-examples>

### 3.4 Quectel UG85 AT command manual

Download from:

<http://itbrainpower.net/micro-3G-shield-module-du3G/3G-UMTS-shield-board-module-RaspberryPI-Arduino-d-u3G-features-code-examples>

## 4 General/legal software/hardware considerations

Write us back about your projects and/or software contribution! We will be more than pleased to publish your hardware/software projects on our site or to include your contribution into the support files!

**The support SOFTWARE is provides "AS IS" in the hope that it will be useful, but WITHOUT ANY WARRANTY; without even the implied warranty of MERCHANTABILITY or FITNESS FOR A PARTICULAR PURPOSE.**

Please read carefully and respect the license agreement published in downloaded software.

**BAD or UNPROPER WIRING/HANDLING/USAGE of the hardware can conduct to SERIOUS DAMAGES! You are the ONLY RESPONSIBLE for hardware handling, usage and wiring!!!**

## X-ON Electronics

Largest Supplier of Electrical and Electronic Components

*Click to view similar products for [Development Boards & Kits - Other Processors](#) category:*

*Click to view products by [R&D Software Solutions](#) manufacturer:*

Other Similar products are found below :

[KIT\\_AURIX\\_TC233LP\\_TRB](#) [EVB-MEC1418MECC](#) [SPC56XVTOP-M](#) [ADZS-BF506F-EZLITE](#) [ADZS-SADA2-BRD](#) [20-101-1252](#)  
[T1023RDB-PC](#) [20-101-1267](#) [T1042D4RDB-PA](#) [ML610Q174](#) [REFERENCE BOARD](#) [MPC574XG-MB](#) [BSC9132QDS](#) [C29XPCIE-RDB](#)  
[KIT\\_TC1793\\_SK](#) [CC-ACC-18M433](#) [P1010RDB-PB](#) [P1020RDB-PD](#) [P2020COME-DS-PB](#) [STM8S/32-D/RAIS](#) [T4240RDB-PB](#) [TRK-USB-](#)  
[MPC5604B](#) [TWR-56F8200](#) [CY3674](#) [SPC58XXADPT176S](#) [MAX1464EVKIT](#) [TRK-MPC5606B](#) [RTE510Y470TGB00000R](#) [STM8128-](#)  
[MCKIT](#) [MAXQ622-KIT#](#) [YRPBRL78G11](#) [SPC58EEMU](#) [QB-R5F10JGC-TB](#) [YQB-R5F11BLE-TB](#) [SPC564A70AVB176](#)  
[RTE5117GC0TGB00000R](#) [QB-R5F100LE-TB](#) [YR0K50571MS000BE](#) [YQB-R5F1057A-TB](#) [QB-R5F104PJ-TB](#) [CC-ACC-ETHMX](#)  
[LFM34INTPQA](#) [SPC563M64A176S](#) [Y-BLDC-SK-RL78F14](#) [P1021RDB-PC](#) [SPC58XCADPT176S](#) [RTE510MPG0TGB00000R](#)  
[YRPBRX71M](#) [LFMAJ04PLT](#) [KITAURIXTC234LPSTRBTOBO1](#) [OV-7604-C7-EVALUATION-BOARD](#)