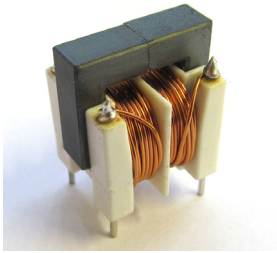


DUS-16 COMMON MODE CHOKES

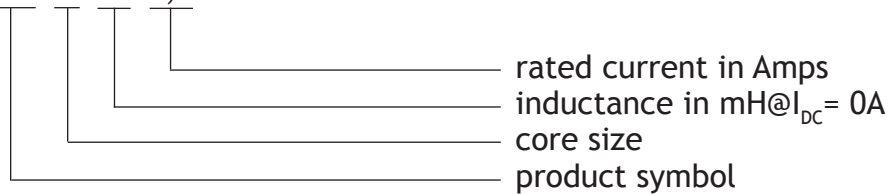


APPLICATIONS:

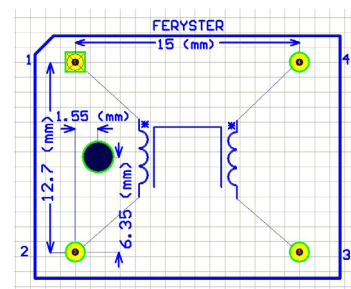
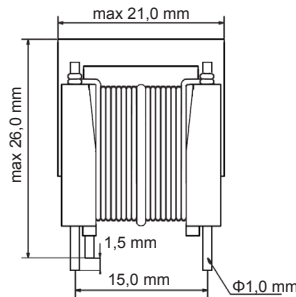
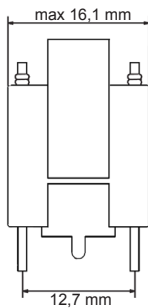
- Suppression of common mode noise
- Line filters
- SMPS
- Electronic ballasts
- Complies with EN 61558-1:2005 and PN-EN 60938-1
- Insulation test voltage: 2100 VAC
- Rated voltage: 250 VAC +10%
- Inductance tolerance: -30%/+50%
- Lower/Upper category temperature: -25°C/+100°C

ORDERING CODE:

DUS-16/33/0,5



DIMENSIONS:

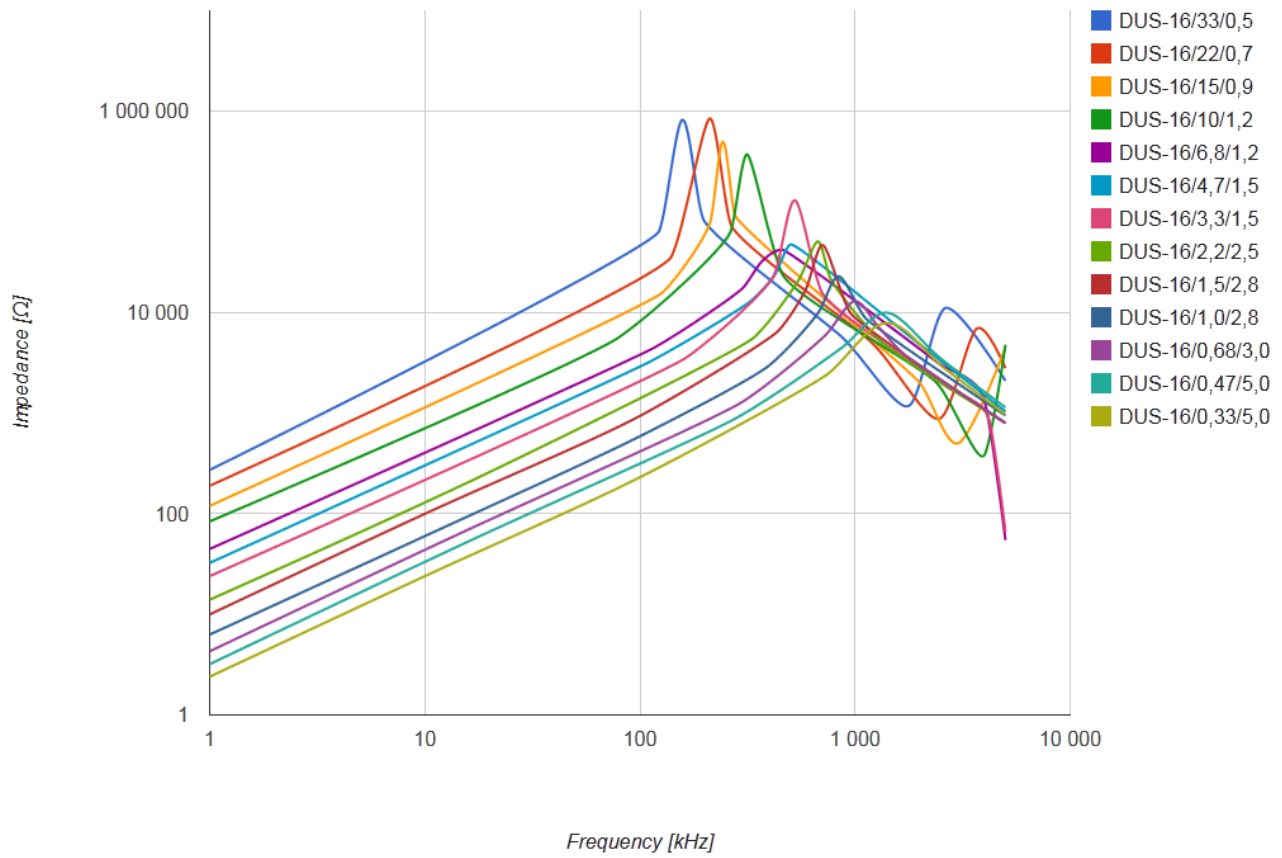


Footprint - Top view

ELECTRICAL PROPERTIES:

Part number	Marking	L_{nom} [mH]	I_{max} [A]	RDC_{max} [Ω]
DUS-16/33/0,5	333.A50 FERYSTER	2X33	0,5	2,250
DUS-16/22/0,7	223.A70 FERYSTER	2X22	0,7	1,250
DUS-16/15/0,9	153.A90 FERYSTER	2X15	0,9	0,770
DUS-16/10/1,2	103.1A2 FERYSTER	2X10	1,2	0,500
DUS-16/6,8/1,2	682.1A2 FERYSTER	2X6,8	1,2	0,350
DUS-16/4,7/1,5	472.1A5 FERYSTER	2X4,7	1,5	0,280
DUS-16/3,3/1,5	332.1A5 FERYSTER	2X3,3	1,5	0,230
DUS-16/2,2/2,5	222.2A5 FERYSTER	2X2,2	2,5	0,130
DUS-16/1,5/2,8	152.2A8 FERYSTER	2X1,5	2,8	0,080
DUS-16/1,0/2,8	102.2A8 FERYSTER	2X1,0	2,8	0,065
DUS-16/0,68/3,0	681.3A0 FERYSTER	2X0,68	3,0	0,055
DUS-16/0,47/5,0	471.5A0 FERYSTER	2X0,47	5,0	0,029
DUS-16/0,33/5,0	331.5A0 FERYSTER	2X0,33	5,0	0,026

CHARACTERISTICS:



X-ON Electronics

Largest Supplier of Electrical and Electronic Components

Click to view similar products for [Fixed Inductors](#) category:

Click to view products by [Feryster](#) manufacturer:

Other Similar products are found below :

[MLZ1608M6R8WTD25](#) [MLZ1608N6R8LT000](#) [MLZ1608N3R3LTD25](#) [MLZ1608N3R3LT000](#) [MLZ1608N150LT000](#)

[MLZ1608M150WTD25](#) [MLZ1608M3R3WTD25](#) [MLZ1608M3R3WT000](#) [MLZ1608M150WT000](#) [MLZ1608A1R5WT000](#)

[MLZ1608N1R5LT000](#) [B82432C1333K000](#) [PCMB053T-1R0MS](#) [PCMB053T-1R5MS](#) [PCMB104T-1R5MS](#) [CR32NP-100KC](#) [CR32NP-](#)

[151KC](#) [CR32NP-180KC](#) [CR32NP-181KC](#) [CR32NP-1R5MC](#) [CR32NP-390KC](#) [CR32NP-3R9MC](#) [CR32NP-680KC](#) [CR32NP-820KC](#)

[CR32NP-8R2MC](#) [CR43NP-390KC](#) [CR43NP-560KC](#) [CR43NP-680KC](#) [CR54NP-181KC](#) [CR54NP-470LC](#) [CR54NP-820KC](#) [CR54NP-8R5MC](#)

[MGDQ4-00004-P](#) [MGDU1-00016-P](#) [MHL1ECTTP18NJ](#) [MHL1JCTTD12NJ](#) [PE-51506NL](#) [PE-53601NL](#) [PE-53630NL](#) [PE-53824SNLT](#) [PE-](#)

[62892NL](#) [PE-92100NL](#) [PG0434.801NLT](#) [PG0936.113NLT](#) [PM06-2N7](#) [PM06-39NJ](#) [HC2LP-R47-R](#) [HC2-R47-R](#) [HC3-2R2-R](#) [HC8-1R2-R](#)