

Vibration-damping elements

Rubber and steel or stainless steel

VIBRATION-DAMPING BODY

Natural rubber NR, hardness 40, 55, 70 tolerance ± 5 Shore A, black colour. Available standard hardness 55 tolerance ± 5 Shore A for executions with AISI 304 stainless steel base.

STANDARD EXECUTIONS

- **DVC.1:** zinc-plated steel plates and threaded studs.
- **DVC.1-SST:** AISI 304 stainless steel plates and threaded studs.
- **DVC.2:** zinc-plated steel plates, threaded stud and boss, threaded blind hole.
- **DVC.2-SST:** AISI 304 stainless steel plates, threaded stud and boss, threaded blind hole.
- **DVC.3:** zinc-plated steel plates and bosses, threaded blind holes.
- **DVC.3-SST:** AISI 304 stainless steel plates and bosses, threaded blind holes.

FEATURES AND APPLICATIONS

DVC. vibration-damping elements have been designed to damp vibrations, shocks and noises produced by moving bodies or non-balanced vibrating masses of equipment and machines.

Unlike DVA vibration-damping elements, under pressure these articles allow more lateral movement without leaving the vertical plane of the metal insert.

Vibrations can cause:

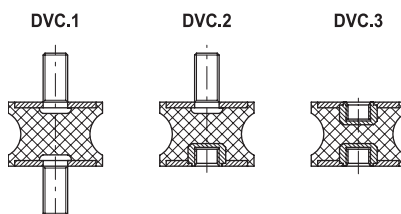
- malfunctioning and reduction of the machine lifespan and/or of the adjacent ones;
- damage to operator's health;
- noise.

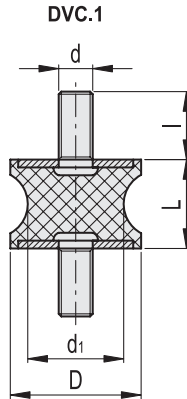
Load diagrams for each single code are available on request.

See technical data and guidelines for the choice on page A53

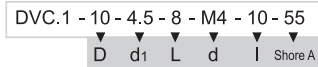
SPECIAL EXECUTIONS ON REQUEST

Natural rubber NR, hardness 40, 70 Shore A ± 5 , for executions with AISI 304 stainless steel base.



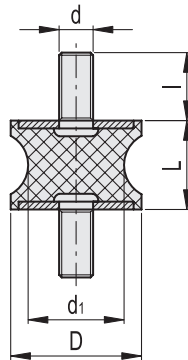


* Complete the description with the desired hardness: 40, 55 or 70 tolerance ±5 Shore A.



Description	D	L	d	d ₁	I	Δ	Hardness 40 Shore A			Hardness 55 Shore A			Hardness 70 Shore A					
							Code	Max load [N]	Max deflection [mm]	Stiffness [N/mm]	Code	Max load [N]	Max deflection [mm]	Stiffness [N/mm]	Code	Max load [N]	Max deflection [mm]	Stiffness [N/mm]
DVC.1-10-4.5-8-M4-10-*	10	8	M4	4.5	10	5	433201	43	2	22	433001	80	2	40	433401	105	2	53
DVC.1-10-8-10-M4-10-*	10	10	M4	8	10	8	433206	37	2.5	15	433006	69	2.5	28	433406	98	2.5	39
DVC.1-15-8.5-15-M4-10-*	15	15	M4	8.5	10	12	433211	113	3.75	30	433011	154	3.75	41	433411	207	3.75	55
DVC.1-15-12-15-M4-10-*	15	15	M4	12	10	14	433216	121	3.75	32	433016	163	3.75	43	433416	221	3.75	59
DVC.1-20-14-15-M6-18-*	20	15	M6	14	18	18	433231	211	3.75	56	433031	273	3.75	73	433431	325	3.75	87
DVC.1-20-14-19-M6-18-*	20	19	M6	14	18	25	433233	193	4.75	41	433033	238	4.75	50	433433	302	4.75	64
DVC.1-20-14-20-M6-18-*	20	20	M6	14	18	26	433235	191	5	38	433035	231	5	46	433435	300	5	60
DVC.1-21-16-22-M6-18-*	21	22	M6	16	18	28	433241	205	5.5	37	433041	268	5.5	49	433441	315	5.5	57
DVC.1-20-12-30-M6-18-*	20	30	M6	12	18	30	433221	126	7.5	17	433021	194	7.5	26	433421	217	7.5	29
DVC.1-20-14-30-M6-18-*	20	30	M6	14	18	32	433237	475	7.5	63	433037	202	7.5	27	433437	301	7.5	40
DVC.1-25-18-20-M6-18-*	25	20	M6	18	18	31	433251	539	5	108	433051	887	5	177	433451	1332	5	266
DVC.1-25-20-20-M6-18-*	25	20	M6	20	18	33	433256	560	5	112	433056	902	5	180	433456	1380	5	276
DVC.1-30-22-20-M8-20-*	30	20	M8	22	20	45	433266	738	5	148	433066	1087	5	217	433466	2005	5	401
DVC.1-30-18-25-M8-20-*	30	25	M8	18	20	50	433261	436	6.25	70	433061	671	6.25	107	433461	1342	6.25	215
DVC.1-35-31-15-M8-20-*	35	15	M8	31	20	46	433276	1120	3.75	299	433076	2097	3.75	559	433476	3215	3.75	857
DVC.1-35-25-34-M8-20-*	35	34	M8	25	20	56	433271	1073	8.5	126	433071	1564	8.5	184	433471	2415	8.5	284
DVC.1-40-30-25-M8-23-*	40	25	M8	30	23	58	433285	1823	6.25	292	433085	2430	6.25	389	433485	3378	6.25	540
DVC.1-40-25-30-M8-23-*	40	30	M8	25	23	64	433283	937	7.5	125	433083	1621	7.5	216	433483	2246	7.5	299
DVC.1-40-33-30-M8-23-*	40	30	M8	33	23	68	433289	1007	7.5	134	433089	1873	7.5	250	433489	2423	7.5	323
DVC.1-40-32-48-M8-23-*	40	48	M8	20	23	76	433281	498	12	42	433081	705	12	59	433481	1123	12	94
DVC.1-40-32-50-M8-23-*	40	50	M8	32	23	82	433287	521	12.5	42	433087	795	12.5	64	433487	1321	12.5	106
DVC.1-50-46-15-M10-28-*	50	15	M10	46	28	94	433296	1027	3.75	274	433096	2430	3.75	648	433496	3385	3.75	903
DVC.1-50-42-30-M10-28-*	50	30	M10	42	28	184	433291	1095	7.5	146	433091	1523	7.5	203	433491	2271	7.5	303
DVC.1-55-44-45-M10-28-*	55	45	M10	44	28	233	433293	911	11.25	81	433093	1328	11.25	118	433493	1974	11.25	175
DVC.1-57-25-45-M10-28-*	57	45	M10	25	28	242	433301	902	11.25	80	433101	1222	11.25	109	433501	1765	11.25	157
DVC.1-60-49-60-M10-28-*	60	60	M10	49	28	264	433306	2188	15	146	433106	3785	15	252	433506	4325	15	288
DVC.1-70-45-53-M12-37-*	70	53	M12	45	37	280	433311	1897	13.25	143	433111	2114	13.25	160	433511	3228	13.25	244
DVC.1-72-64-33.5-M12-37-*	72	33.5	M12	64	37	297	433316	2875	8.38	343	433116	4170	8.38	498	433516	7315	8.38	873
DVC.1-75-60-40-M12-37-*	75	40	M12	60	37	380	433321	2409	10	241	433121	3610	10	361	433521	6988	10	699
DVC.1-95-80-75-M16-41-*	95	75	M16	80	41	1090	433326	7584	18.75	404	433126	10865	18.75	579	433526	13263	18.75	707

DVC.1-SST



DVC.1 - 10 - 4.5 - 8 - SST - M4 - 10 - 55

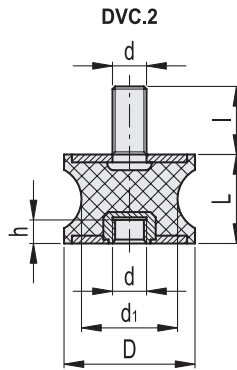
D d1 L Stainless steel d I Shore A

STAINLESS STEEL

Description	D	L	d	d1	I	Δ	Hardness 40 Shore A			Hardness 55 Shore A			Hardness 70 Shore A					
							Code	Max load [N]	Max deflection [mm]	Stiffness [N/mm]	Code	Max load [N]	Max deflection [mm]	Stiffness [N/mm]	Code	Max load [N]	Max deflection [mm]	Stiffness [N/mm]
DVC.1-10-4.5-8-SST-M4-10-55	10	8	M4	4.5	10	5		43	2	22	433601	80	2	40		105	2	53
DVC.1-10-8-10-SST-M4-10-55	10	10	M4	8	10	8		37	2.5	15	433606	69	2.5	28		98	2.5	39
DVC.1-15-8.5-15-SST-M4-10-55	15	15	M4	8.5	10	12		113	3.75	30	433611	113	3.75	30		207	3.75	55
DVC.1-15-12-15-SST-M4-10-55	15	15	M4	12	10	14		121	3.75	32	433616	163	3.75	43		221	3.75	59
DVC.1-20-14-15-SST-M6-18-55	20	15	M6	14	18	18		211	3.75	56	433631	273	3.75	73		325	3.75	87
DVC.1-20-14-19-SST-M6-18-55	20	19	M6	14	18	25		193	4.75	41	433633	238	4.75	50		302	4.75	64
DVC.1-20-14-20-SST-M6-18-55	20	20	M6	14	18	26		191	5	38	433635	231	5	46		300	5	60
DVC.1-21-16-22-SST-M6-18-55	21	22	M6	16	18	28		205	5.5	37	433641	205	5.5	37		315	5.5	57
DVC.1-20-12-30-SST-M6-18-55	20	30	M6	12	18	30		126	7.5	17	433621	280	7.5	37		217	7.5	29
DVC.1-20-14-30-SST-M6-18-55	20	30	M6	14	18	32		475	7.5	63	433637	507	7.5	68		301	7.5	40
DVC.1-25-18-20-SST-M6-18-55	25	20	M6	18	18	31		539	5	108	433651	887	5	177		1332	5	266
DVC.1-25-20-20-SST-M6-18-55	25	20	M6	20	18	33		560	5	112	433656	560	5	112		1380	5	276
DVC.1-30-22-20-SST-M8-20-55	30	20	M8	22	20	45		738	5	148	433666	1087	5	217		2005	5	401
DVC.1-30-18-25-SST-M8-20-55	30	25	M8	18	20	50	ON REQUEST	436	6.25	70	433661	671	6.25	107	ON REQUEST	1342	6.25	215
DVC.1-35-31-15-SST-M8-20-55	35	15	M8	31	20	46		1120	3.75	299	433676	2097	3.75	559		3215	3.75	857
DVC.1-35-25-34-SST-M8-20-55	35	34	M8	25	20	56		1073	8.5	126	433671	1564	8.5	184		2415	8.5	284
DVC.1-40-30-25-SST-M8-23-55	40	25	M8	30	23	58		1823	6.25	292	433685	2430	6.25	389		3378	6.25	540
DVC.1-40-25-30-SST-M8-23-55	40	30	M8	25	23	64		937	7.5	125	433683	1621	7.5	216		2246	7.5	299
DVC.1-40-33-30-SST-M8-23-55	40	30	M8	33	23	68		1007	7.5	134	433689	1873	7.5	250		2423	7.5	323
DVC.1-40-20-48-SST-M8-23-55	40	48	M8	20	23	76		498	12	42	433681	705	12.5	56		1123	12	94
DVC.1-40-32-50-SST-M8-23-55	40	50	M8	32	23	82		521	12.5	42	433687	795	12.5	64		1321	12.5	106
DVC.1-50-46-15-SST-M10-28-55	50	15	M10	46	28	94		1027	3.75	274	433696	2430	3.75	648		3385	3.75	903
DVC.1-50-42-30-SST-M10-28-55	50	30	M10	42	28	184		1095	7.5	146	433691	1523	7.5	203		2271	7.5	303
DVC.1-55-44-45-SST-M10-28-55	55	45	M10	44	28	233		911	11.25	81	433693	1328	11.25	118		1974	11.25	175
DVC.1-57-25-45-SST-M10-28-55	57	45	M10	25	28	242		902	11.25	80	433701	1222	11.25	109		1765	11.25	157
DVC.1-60-49-60-SST-M10-28-55	60	60	M10	49	28	264		2188	15	146	433706	3785	15	252		4325	15	288
DVC.1-70-45-53-SST-M12-37-55	70	53	M12	45	37	280		1897	13.25	143	433711	2114	13.25	160		3228	13.25	244
DVC.1-72-64-33.5-SST-M12-37-55	72	33.5	M12	64	37	297		2875	8.38	343	433716	4170	8.38	498		7315	8.38	873
DVC.1-75-60-40-SST-M12-37-55	75	40	M12	60	37	380		2409	10	241	433721	3610	10	361		6988	10	699
DVC.1-95-80-75-SST-M16-41-55	95	75	M16	80	41	1090		7584	18.75	404	433726	10865	18.75	579		13263	18.75	707



Machine elements



* Complete the description with the desired hardness:
40, 55 or 70 tolerance ± 5 Shore A.

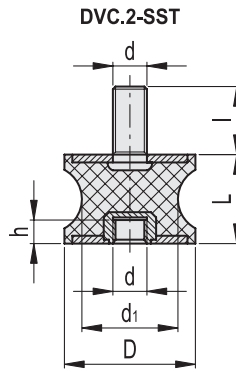
DVC.2 - 10 - 8 - 10 - M4 - 10 - 55
 D d₁ L d I Shore A

Description	D	L	d	d ₁	I	h	⚖	Hardness 40 Shore A			Hardness 55 Shore A			Hardness 70 Shore A					
								Code	Max load [N]	Max deflection [mm]	Stiffness [N/mm]	Code	Max load [N]	Max deflection [mm]	Stiffness [N/mm]	Code	Max load [N]	Max deflection [mm]	Stiffness [N/mm]
DVC.2-10-8-10-M4-10-*	10	10	M4	8	10	4	3	433901	94	2,5	37	433751	43	2,5	17	434051	81	2,5	32
DVC.2-15-8,5-15-M4-10-*	15	15	M4	8,5	10	4	5	433911	81	3,75	22	433761	132	3,75	35	434061	180	3,75	48
DVC.2-15-12-15-M4-10-*	15	15	M4	12	10	4	6	433916	132	3,75	35	433766	142	3,75	38	434066	191	3,75	51
DVC.2-20-14-15-M6-18-*	20	15	M6	14	18	6	14	433923	191	3,75	51	433773	247	3,75	66	434073	319	3,75	85
DVC.2-20-14-19-M6-18-*	20	19	M6	14	18	6	16	433925	319	4,75	67	433775	226	4,75	48	434075	278	4,75	59
DVC.2-20-14-20-M6-18-*	20	20	M6	14	18	6	17	433927	278	5	56	433777	223	5	45	434077	270	5	54
DVC.2-21-16-22-M6-18-*	21	22	M6	16	18	6	18	433931	270	5,5	49	433781	240	5,5	44	434081	314	5,5	57
DVC.2-20-12-30-M6-18-*	20	30	M6	12	18	6	22	433921	240	7,5	32	433771	147	7,5	20	434071	227	7,5	30
DVC.2-20-14-30-M6-18-*	20	30	M6	14	18	6	25	433929	173	7,5	23	433779	255	7,5	34	434079	380	7,5	51
DVC.2-25-18-20-M6-18-*	25	20	M6	18	18	6	36	433941	593	5	119	433791	631	5	126	434091	1038	5	208
DVC.2-25-20-20-M6-18-*	25	20	M6	20	18	6	39	433946	1038	5	208	433796	655	5	131	434096	1055	5	211
DVC.2-30-22-20-M8-20-*	30	20	M8	22	20	8	44	433956	655	5	131	433806	863	5	173	434106	1272	5	254
DVC.2-30-18-25-M8-20-*	30	25	M8	18	20	8	49	433951	1272	6,25	203	433801	510	6,25	82	434101	785	6,25	126
DVC.2-35-31-15-M8-20-*	35	15	M8	31	20	8	46	433966	785	3,75	209	433816	1310	3,75	349	434116	2453	3,75	654
DVC.2-35-25-34-M8-20-*	35	34	M8	25	20	8	60	433961	2453	8,5	289	433811	1255	8,5	148	434111	1830	8,5	215
DVC.2-40-30-25-M8-23-*	40	25	M8	30	23	8	73	433975	1830	6,25	293	433825	2133	6,25	341	434125	2843	6,25	455
DVC.2-40-25-30-M8-23-*	40	30	M8	25	23	8	76	433973	2843	7,5	379	433823	1096	7,5	146	434123	1897	7,5	253
DVC.2-40-33-30-M8-23-*	40	30	M8	33	23	8	80	433979	861	7,5	115	433829	1178	7,5	157	434129	2191	7,5	292
DVC.2-40-20-48-M8-23-*	40	48	M8	20	23	8	86	433971	2191	12	183	433821	583	12	49	434121	825	12	69
DVC.2-40-32-50-M8-23-*	40	50	M8	32	23	8	94	433977	825	12,5	66	433827	610	12,5	49	434127	930	12,5	74
DVC.2-50-42-30-M10-28-*	50	30	M10	42	28	10	112	433981	2843	7,5	379	433831	1281	7,5	171	434131	1782	7,5	238
DVC.2-55-44-45-M10-28-*	55	45	M10	44	28	10	162	433986	1782	11,25	158	433836	1066	11,25	95	434136	1554	11,25	138
DVC.2-57-25-45-M10-28-*	57	45	M10	25	28	10	155	433991	1554	11,25	138	433841	1055	11,25	94	434141	1430	11,25	127
DVC.2-60-49-60-M10-28-*	60	60	M10	49	28	10	245	433996	1430	15	95	433846	2560	15	171	434146	4428	15	295
DVC.2-70-45-53-M12-37-*	70	53	M12	45	37	12	321	434001	4428	13,25	334	433851	2219	13,25	168	434151	2473	13,25	187
DVC.2-72-64-33,5-M12-37-*	72	33,5	M12	64	37	12	385	434006	2473	8,38	295	433856	3364	8,38	402	434156	4879	8,38	583
DVC.2-75-60-40-M12-37-*	75	40	M12	60	37	12	450	434011	4879	10	488	433861	2819	10	282	434161	4224	10	422
DVC.2-95-80-75-M16-41-*	95	75	M16	80	41	16	740	434016	4224	18,75	225	433866	8873	18,75	473	434166	12712	18,75	678



9

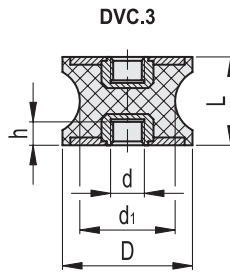
Machine elements



DVC.2 - 10 - 8 - 10 - SST - M4 - 10 - 55
 D d1 L Stainless steel d l Shore A

STAINLESS STEEL

Description	D	L	d	d1	l	h	Hardness 40 Shore A			Hardness 55 Shore A			Hardness 70 Shore A					
							Code	Max load [N]	Max deflection [mm]	Stiffness [N/mm]	Code	Max load [N]	Max deflection [mm]	Stiffness [N/mm]	Code	Max load [N]	Max deflection [mm]	Stiffness [N/mm]
DVC.2-10-8-10-SST-M4-10-55	10	10	M4	8	10	4	3	94	2.5	37	434201	115	2.5	46	81	2.5	32	
DVC.2-15-8,5-15-SST-M4-10-55	15	15	M4	8,5	10	4	5	94	2.5	37	434211	242	3,75	65	81	2,5	32	
DVC.2-15-12-15-SST-M4-10-55	15	15	M4	12	10	4	6	81	3,75	22	434216	259	3,75	69	180	3,75	48	
DVC.2-20-14-15-SST-M6-18-55	20	15	M6	14	18	6	14	132	3,75	35	434223	380	3,75	101	191	3,75	51	
DVC.2-20-14-19-SST-M6-18-55	20	19	M6	14	18	6	16	191	3,75	51	434225	353	4,75	74	319	3,75	85	
DVC.2-20-14-20-SST-M6-18-55	20	20	M6	14	18	6	17	319	4,75	67	434227	351	5	70	278	4,75	59	
DVC.2-21-16-22-SST-M6-18-55	21	22	M6	16	18	6	18	278	5	56	434231	369	5,5	67	270	5	54	
DVC.2-20-12-30-SST-M6-18-55	20	30	M6	12	18	6	22	270	5,5	49	434221	254	7,5	34	314	5,5	57	
DVC.2-20-14-30-SST-M6-18-55	20	30	M6	14	18	6	25	240	7,5	32	434229	255	7,5	34	227	7,5	30	
DVC.2-25-18-20-SST-M6-18-55	25	20	M6	18	18	6	36	328	7,5	44	434241	1558	5	312	236	7,5	32	
DVC.2-25-20-20-SST-M6-18-55	25	20	M6	20	18	6	39	593	5	119	434246	1615	5	323	1038	5	208	
DVC.2-30-22-20-SST-M8-20-55	30	20	M8	22	20	8	44	1038	5	208	434256	2346	5	469	1055	5	211	
DVC.2-30-18-25-SST-M8-20-55	30	25	M8	18	20	8	49	ON REQUEST	655	5	131	434251	1570	6,25	251	1272	5	254
DVC.2-35-31-15-SST-M8-20-55	35	15	M8	31	20	8	46	1272	6,25	203	434266	3762	3,75	1003	785	6,25	126	
DVC.2-35-25-34-SST-M8-20-55	35	34	M8	25	20	8	60	785	3,75	209	434261	2826	8,5	332	2453	3,75	654	
DVC.2-40-30-25-SST-M8-23-55	40	25	M8	30	23	8	73	2453	8,5	289	434275	3952	6,25	632	1830	8,5	215	
DVC.2-40-25-30-SST-M8-23-55	40	30	M8	25	23	8	76	1830	6,25	293	434273	2628	7,5	350	2843	6,25	455	
DVC.2-40-33-30-SST-M8-23-55	40	30	M8	33	23	8	80	2843	7,5	379	434279	2835	7,5	378	1897	7,5	253	
DVC.2-40-20-48-SST-M8-23-55	40	48	M8	20	23	8	86	1897	7,5	253	434271	1314	12	109	2191	7,5	292	
DVC.2-40-32-50-SST-M8-23-55	40	50	M8	32	23	8	94	2191	12	183	434277	1546	12,5	124	825	12	69	
DVC.2-50-42-30-SST-M10-28-55	50	30	M10	42	28	10	112	825	12,5	66	434281	2657	7,5	354	930	12,5	74	
DVC.2-55-44-45-SST-M10-28-55	55	45	M10	44	28	10	162	2843	7,5	379	434286	2310	11,25	205	1782	7,5	238	
DVC.2-57-25-45-SST-M10-28-55	57	45	M10	25	28	10	155	1782	11,25	158	434291	2065	11,25	184	1554	11,25	138	
DVC.2-60-49-60-SST-M10-28-55	60	60	M10	49	28	10	245	1554	11,25	138	434296	5060	15	337	1430	11,25	127	
DVC.2-70-45-53-SST-M12-37-55	70	53	M12	45	37	12	321	1430	15	95	434301	3777	13,25	285	4428	15	295	
DVC.2-72-64-33-5-SST-M12-37-55	72	33,5	M12	64	37	12	385	4428	13,25	334	434306	8559	8,38	1022	2473	13,25	187	
DVC.2-75-60-40-SST-M12-37-55	75	40	M12	60	37	12	450	2473	8,38	295	434311	8176	10	818	4879	8,38	583	
DVC.2-95-80-75-SST-M16-41-55	95	75	M16	80	41	16	740	4879	10	488	434316	15518	18,75	828	4224	10	422	



* Complete the description with the desired hardness:
40, 55 or 70 tolerance ± 5 Shore A.

DVC.3 - 15 - 8.5 - 15 - M4 - 55
 D d1 L d Shore A

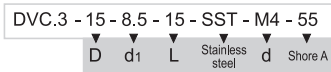
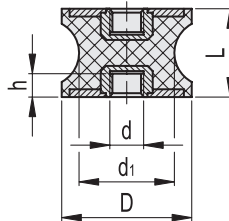
Description	D	L	d	d ₁	h	⚖	Hardness 40 Shore A			Hardness 55 Shore A			Hardness 70 Shore A					
							Code	Max load [N]	Max deflection [mm]	Stiffness [N/mm]	Code	Max load [N]	Max deflection [mm]	Stiffness [N/mm]	Code	Max load [N]	Max deflection [mm]	Stiffness [N/mm]
DVC.3-15-8.5-15-M4.*	15	15	M4	8.5	4	6	434601	94	3.75	25	434501	155	3.75	41	434701	211	3.75	56
DVC.3-15-12-15-M4.*	15	15	M4	12	4	8	434606	155	3.75	41	434506	166	3.75	44	434706	223	3.75	60
DVC.3-20-14-15-M6.*	20	15	M6	14	6	13	434613	223	3.75	60	434513	289	3.75	77	434713	374	3.75	100
DVC.3-20-14-19-M6.*	20	19	M6	14	6	16	434615	374	4.75	79	434515	264	4.75	56	434715	326	4.75	69
DVC.3-20-14-20-M6.*	20	20	M6	14	6	17	434617	326	5	65	434517	261	5	52	434717	316	5	63
DVC.3-21-16-22-M6.*	21	22	M6	16	6	18	434621	316	5.5	57	434521	281	5.5	51	434721	367	5.5	67
DVC.3-20-12-30-M6.*	20	30	M6	12	6	19	434611	281	7.5	37	434511	172	7.5	23	434711	266	7.5	35
DVC.3-20-14-30-M6.*	20	30	M6	14	6	23	434619	383	7.5	51	434519	650	7.5	87	434719	277	7.5	37
DVC.3-25-18-20-M6.*	25	20	M6	18	6	27	434631	694	5	139	434531	738	5	148	434731	1214	5	243
DVC.3-25-20-20-M6.*	25	20	M6	20	6	30	434636	1214	5	243	434536	767	5	153	434736	1235	5	247
DVC.3-30-22-20-M8.*	30	20	M8	22	8	39	434643	767	5	153	434543	1010	5	202	434743	1488	5	298
DVC.3-30-18-25-M8.*	30	25	M8	18	8	42	434641	1488	6.25	238	434541	597	6.25	95	434741	919	6.25	147
DVC.3-35-25-34-M8.*	35	34	M8	25	8	53	434645	2871	8.5	338	434545	1469	8.5	173	434745	2141	8.5	252
DVC.3-40-30-25-M8.*	40	25	M8	30	8	64	434655	2141	6.25	343	434555	2496	6.25	399	434755	3326	6.25	532
DVC.3-40-25-30-M8.*	40	30	M8	25	8	72	434653	3326	7.5	444	434553	1283	7.5	171	434753	2219	7.5	296
DVC.3-40-33-30-M8.*	40	30	M8	33	8	80	434659	2219	7.5	296	434559	1378	7.5	184	434759	2564	7.5	342
DVC.3-40-32-50-M8.*	40	50	M8	32	8	98	434657	2564	12.5	205	434557	682	12.5	55	434757	965	12.5	77
DVC.3-40-20-48-M8.*	40	48	M8	20	8	86	434651	965	12	80	434551	713	12	59	434751	1088	12	91
DVC.3-50-42-30-M10.*	50	30	M10	42	10	125	434656	3326	7.5	444	434556	1499	7.5	200	434756	2085	7.5	278
DVC.3-55-44-45-M10.*	55	45	M10	44	10	150	434661	2085	11.25	185	434561	1247	11.25	111	434761	1818	11.25	162
DVC.3-57-25-45-M10.*	57	45	M10	25	10	140	434666	1818	11.25	162	434566	1235	11.25	110	434766	1673	11.25	149
DVC.3-60-49-60-M10.*	60	60	M10	49	10	310	434671	1673	15	112	434571	2995	15	200	434771	5181	15	345
DVC.3-70-45-53-M12.*	70	53	M12	45	12	336	434676	5181	13.25	391	434576	2597	13.25	196	434776	2894	13.25	218
DVC.3-72-64-33.5-M12.*	72	33.5	M12	64	12	342	434681	2894	8.38	346	434581	3936	8.38	470	434781	5708	8.38	682
DVC.3-75-60-40-M12.*	75	40	M12	60	12	360	434686	5708	10	571	434586	3298	10	330	434786	4942	10	494
DVC.3-95-80-75-M16.*	95	75	M16	80	16	690	434691	4942	18.75	264	434591	10382	18.75	554	434791	14873	18.75	793



9

Machine elements

DVC.3-SST



STAINLESS STEEL

Description	D	L	d	d ₁	h	△	Hardness 40 Shore A			Hardness 55 Shore A			Hardness 70 Shore A					
							Code	Max load [N]	Max deflection [mm]	Stiffness [N/mm]	Code	Max load [N]	Max deflection [mm]	Stiffness [N/mm]	Code	Max load [N]	Max deflection [mm]	Stiffness [N/mm]
DVC.3-15-8.5-15-SST-M4-55	15	15	M4	8.5	4	6		94	3,75	25	434801	283	3,75	76		211	3,75	56
DVC.3-15-12-15-SST-M4-55	15	15	M4	12	4	8		94	3,75	25	434806	303	3,75	81		211	3,75	56
DVC.3-20-14-15-SST-M6-55	20	15	M6	14	6	13		155	3,75	41	434813	445	3,75	119		223	3,75	60
DVC.3-20-14-19-SST-M6-55	20	19	M6	14	6	16		223	3,75	60	434815	413	4,75	87		374	3,75	100
DVC.3-20-14-20-SST-M6-55	20	20	M6	14	6	17		374	4,75	79	434817	411	5	82		326	4,75	69
DVC.3-21-16-22-SST-M6-55	21	22	M6	16	6	18		326	5	65	434821	431	5,5	78		316	5	63
DVC.3-20-12-30-SST-M6-55	20	30	M6	12	6	19		316	5,5	57	434811	297	7,5	40		367	5,5	67
DVC.3-20-14-30-SST-M6-55	20	30	M6	14	6	23		281	7,5	37	434819	412	7,5	55		266	7,5	35
DVC.3-25-18-20-SST-M6-55	25	20	M6	18	6	27		383	7,5	51	434831	1823	5	365		277	7,5	37
DVC.3-25-20-20-SST-M6-55	25	20	M6	20	6	30		694	5	139	434836	1889	5	378		1214	5	243
DVC.3-30-22-20-SST-M8-55	30	20	M8	22	8	39	ON REQUEST	1214	5	243	434843	2745	5	549	ON REQUEST	1235	5	247
DVC.3-30-18-25-SST-M8-55	30	25	M8	18	8	42		767	5	153	434841	1837	6,25	294		1488	5	298
DVC.3-35-25-34-SST-M8-55	35	34	M8	25	8	53		1488	6,25	238	434845	3306	8,5	389		919	6,25	147
DVC.3-40-30-25-SST-M8-55	40	25	M8	30	8	64		2871	8,5	338	434855	4624	6,25	740		2141	8,5	252
DVC.3-40-25-30-SST-M8-55	40	30	M8	25	8	72		2141	6,25	343	434853	3075	7,5	410		3326	6,25	532
DVC.3-40-33-30-SST-M8-55	40	30	M8	33	8	80		3326	7,5	444	434859	3317	7,5	442		2219	7,5	296
DVC.3-40-32-50-SST-M8-55	40	50	M8	32	8	98		2219	7,5	296	434857	1537	12,5	123		2564	7,5	342
DVC.3-40-20-48-SST-M8-55	40	48	M8	20	8	86		2564	12,5	205	434851	1808	12	151		965	12,5	77
DVC.3-50-42-30-SST-M10-55	50	30	M10	42	10	125		965	12	80	434856	3109	7,5	415		1088	12	91
DVC.3-55-44-45-SST-M10-55	55	45	M10	44	10	150		3326	7,5	444	434861	2702	11,25	240		2085	7,5	278
DVC.3-57-25-45-SST-M10-55	57	45	M10	25	10	140	2085	11,25	185	434866	2416	11,25	215	1818	11,25	162		
DVC.3-60-49-60-SST-M10-55	60	60	M10	49	10	310	1818	11,25	162	434871	5920	15	395	1673	11,25	149		
DVC.3-70-45-53-SST-M12-55	70	53	M12	45	12	336	1673	15	112	434876	4419	13,25	333	5181	15	345		
DVC.3-72-64-33,5-SST-M12-55	72	33,5	M12	64	12	342	5181	13,25	391	434881	10014	8,38	1196	2894	13,25	218		
DVC.3-75-60-40-SST-M12-55	75	40	M12	60	12	360	2894	8,38	346	434886	9566	10	957	5708	8,38	682		
DVC.3-95-80-75-SST-M16-55	95	75	M16	80	16	690	5708	10	571	434891	18156	18,75	968	4942	10	494		

X-ON Electronics

Largest Supplier of Electrical and Electronic Components

Click to view similar products for [Electrical Enclosure Accessories](#) *category:*

Click to view products by [Elesa & Ganter](#) *manufacturer:*

Other Similar products are found below :

[60121-06-028 C-325 Black](#) [71884-04-028 CM3-100 Black](#) [71884-18-028 LH43-200 Black](#) [71884-24-028 LH75-200 Black](#) [71885-01-028 CM6-150 Black](#) [72459-02-028 DM-3 BLACK](#) [81501-01-000 XPL, 9VB Black](#) [82402-01 PT-8 ALUM](#) [1335GSKT3](#) [14101FP-PK](#) [CB-1263-BT](#) [1611512-4](#) [HB-11498](#) [RC-7775](#) [HM BLACK PANEL](#) [61033-01-000](#) [115123-01-508 CN-RL RS](#) [115124-01-508 CN-XRL XRS](#) [115119-01-000 CN-RL RS](#) [115123-01-000 CN-RL RS](#) [60121-04-028 C-275 Black](#) [60128-01-072](#) [60222-01-028 CM6-225 Black](#) [60272-01-028 CM3-150 Black](#) [60851-01-028 CM69-120 Black](#) [62291-502-000-KEU-10-BLK](#) [62452-01-000 HML-9VB, EB Black](#) [71884-25-028 LH89-130 Black](#) [AXX2POSTBRCKT](#) [FUPMESK](#) [71884-23-028 LH75-130 Black](#) [1317GSKTSC](#) [8G813V40389](#) [DVA.1-10-15-M4-10-70](#) [DVC.1-60-49-60-M10-28-55](#) [DVC.1-15-8,5-15-M4-10-40](#) [DVC.1-20-12-30-M6-18-40](#) [DVC.1-30-18-25-M8-20-40](#) [DVC.1-35-31-15-M8-20-40](#) [DVC.1-35-31-15-M8-20-70](#) [DVC.1-75-60-40-M12-37-70](#) [DVC.2-30-22-20-M8-20-55](#) [DVC.2-40-30-25-M8-23-55](#) [DVC.2-75-60-40-M12-37-55](#) [DVC.2-21-16-22-M6-18-40](#) [DVC.2-40-20-48-M8-23-40](#) [DVC.2-40-32-50-M8-23-40](#) [DVC.2-20-14-19-M6-18-70](#) [DVC.2-25-18-20-M6-18-70](#) [DVC.3-20-14-20-M6-40](#) [DVC.3-20-14-30-M6-40](#)