

## Vibration-damping elements

### Rubber and steel or stainless steel

#### VIBRATION-DAMPING BODY

Natural rubber NR, hardness 40, 55, 70 tolerance  $\pm 5$  Shore A, black colour. Available standard hardness 55 tolerance  $\pm 5$  Shore A for executions with AISI 304 stainless steel base.

#### STANDARD EXECUTIONS

- **DVC.1:** zinc-plated steel plates and threaded studs.
- **DVC.1-SST:** AISI 304 stainless steel plates and threaded studs.
- **DVC.2:** zinc-plated steel plates, threaded stud and boss, threaded blind hole.
- **DVC.2-SST:** AISI 304 stainless steel plates, threaded stud and boss, threaded blind hole.
- **DVC.3:** zinc-plated steel plates and bosses, threaded blind holes.
- **DVC.3-SST:** AISI 304 stainless steel plates and bosses, threaded blind holes.

#### FEATURES AND APPLICATIONS

DVC. vibration-damping elements have been designed to damp vibrations, shocks and noises produced by moving bodies or non-balanced vibrating masses of equipment and machines.

Unlike DVA vibration-damping elements, under pressure these articles allow more lateral movement without leaving the vertical plane of the metal insert.

Vibrations can cause:

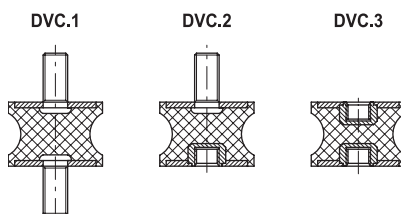
- malfunctioning and reduction of the machine lifespan and/or of the adjacent ones;
- damage to operator's health;
- noise.

Load diagrams for each single code are available on request.

See technical data and guidelines for the choice on page A53

#### SPECIAL EXECUTIONS ON REQUEST

Natural rubber NR, hardness 40, 70 Shore A  $\pm 5$ , for executions with AISI 304 stainless steel base.

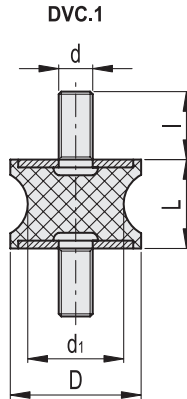


9

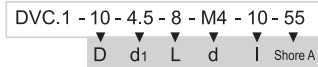
Machine elements



Machine elements

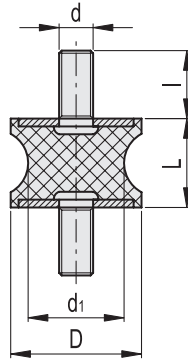


\* Complete the description with the desired hardness: 40, 55 or 70 tolerance  $\pm 5$  Shore A.



Description	D	L	d	d <sub>1</sub>	l	Δ	Hardness 40 Shore A			Hardness 55 Shore A			Hardness 70 Shore A					
							Code	Max load [N]	Max deflection [mm]	Stiffness [N/mm]	Code	Max load [N]	Max deflection [mm]	Stiffness [N/mm]	Code	Max load [N]	Max deflection [mm]	Stiffness [N/mm]
DVC.1-10-4.5-8-M4-10-*	10	8	M4	4.5	10	5	433201	43	2	22	433001	80	2	40	433401	105	2	53
DVC.1-10-8-10-M4-10-*	10	10	M4	8	10	8	433206	37	2.5	15	433006	69	2.5	28	433406	98	2.5	39
DVC.1-15-8.5-15-M4-10-*	15	15	M4	8.5	10	12	433211	113	3.75	30	433011	154	3.75	41	433411	207	3.75	55
DVC.1-15-12-15-M4-10-*	15	15	M4	12	10	14	433216	121	3.75	32	433016	163	3.75	43	433416	221	3.75	59
DVC.1-20-14-15-M6-18-*	20	15	M6	14	18	18	433231	211	3.75	56	433031	273	3.75	73	433431	325	3.75	87
DVC.1-20-14-19-M6-18-*	20	19	M6	14	18	25	433233	193	4.75	41	433033	238	4.75	50	433433	302	4.75	64
DVC.1-20-14-20-M6-18-*	20	20	M6	14	18	26	433235	191	5	38	433035	231	5	46	433435	300	5	60
DVC.1-21-16-22-M6-18-*	21	22	M6	16	18	28	433241	205	5.5	37	433041	268	5.5	49	433441	315	5.5	57
DVC.1-20-12-30-M6-18-*	20	30	M6	12	18	30	433221	126	7.5	17	433021	194	7.5	26	433421	217	7.5	29
DVC.1-20-14-30-M6-18-*	20	30	M6	14	18	32	433237	475	7.5	63	433037	202	7.5	27	433437	301	7.5	40
DVC.1-25-18-20-M6-18-*	25	20	M6	18	18	31	433251	539	5	108	433051	887	5	177	433451	1332	5	266
DVC.1-25-20-20-M6-18-*	25	20	M6	20	18	33	433256	560	5	112	433056	902	5	180	433456	1380	5	276
DVC.1-30-22-20-M8-20-*	30	20	M8	22	20	45	433266	738	5	148	433066	1087	5	217	433466	2005	5	401
DVC.1-30-18-25-M8-20-*	30	25	M8	18	20	50	433261	436	6.25	70	433061	671	6.25	107	433461	1342	6.25	215
DVC.1-35-31-15-M8-20-*	35	15	M8	31	20	46	433276	1120	3.75	299	433076	2097	3.75	559	433476	3215	3.75	857
DVC.1-35-25-34-M8-20-*	35	34	M8	25	20	56	433271	1073	8.5	126	433071	1564	8.5	184	433471	2415	8.5	284
DVC.1-40-30-25-M8-23-*	40	25	M8	30	23	58	433285	1823	6.25	292	433085	2430	6.25	389	433485	3378	6.25	540
DVC.1-40-25-30-M8-23-*	40	30	M8	25	23	64	433283	937	7.5	125	433083	1621	7.5	216	433483	2246	7.5	299
DVC.1-40-33-30-M8-23-*	40	30	M8	33	23	68	433289	1007	7.5	134	433089	1873	7.5	250	433489	2423	7.5	323
DVC.1-40-32-48-M8-23-*	40	48	M8	20	23	76	433281	498	12	42	433081	705	12	59	433481	1123	12	94
DVC.1-40-32-50-M8-23-*	40	50	M8	32	23	82	433287	521	12.5	42	433087	795	12.5	64	433487	1321	12.5	106
DVC.1-50-46-15-M10-28-*	50	15	M10	46	28	94	433296	1027	3.75	274	433096	2430	3.75	648	433496	3385	3.75	903
DVC.1-50-42-30-M10-28-*	50	30	M10	42	28	184	433291	1095	7.5	146	433091	1523	7.5	203	433491	2271	7.5	303
DVC.1-55-44-45-M10-28-*	55	45	M10	44	28	233	433293	911	11.25	81	433093	1328	11.25	118	433493	1974	11.25	175
DVC.1-57-25-45-M10-28-*	57	45	M10	25	28	242	433301	902	11.25	80	433101	1222	11.25	109	433501	1765	11.25	157
DVC.1-60-49-60-M10-28-*	60	60	M10	49	28	264	433306	2188	15	146	433106	3785	15	252	433506	4325	15	288
DVC.1-70-45-53-M12-37-*	70	53	M12	45	37	280	433311	1897	13.25	143	433111	2114	13.25	160	433511	3228	13.25	244
DVC.1-72-64-33.5-M12-37-*	72	33.5	M12	64	37	297	433316	2875	8.38	343	433116	4170	8.38	498	433516	7315	8.38	873
DVC.1-75-60-40-M12-37-*	75	40	M12	60	37	380	433321	2409	10	241	433121	3610	10	361	433521	6988	10	699
DVC.1-95-80-75-M16-41-*	95	75	M16	80	41	1090	433326	7584	18.75	404	433126	10865	18.75	579	433526	13263	18.75	707

DVC.1-SST



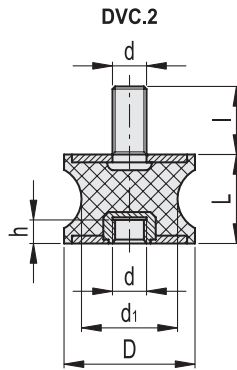
DVC.1 - 10 - 4.5 - 8 - SST - M4 - 10 - 55  
 D d1 L Stainless steel d I Shore A

STAINLESS STEEL

Description	D	L	d	d1	I	Δ	Hardness 40 Shore A			Hardness 55 Shore A			Hardness 70 Shore A			
							Code	Max load [N]	Max deflection [mm]	Stiffness [N/mm]	Code	Max load [N]	Max deflection [mm]	Stiffness [N/mm]	Code	Max load [N]
DVC.1-10-4.5-8-SST-M4-10-55	10	8	M4	4.5	10	5	43	2	22	433601	80	2	40	105	2	53
DVC.1-10-8-10-SST-M4-10-55	10	10	M4	8	10	8	37	2.5	15	433606	69	2.5	28	98	2.5	39
DVC.1-15-8.5-15-SST-M4-10-55	15	15	M4	8.5	10	12	113	3.75	30	433611	113	3.75	30	207	3.75	55
DVC.1-15-12-15-SST-M4-10-55	15	15	M4	12	10	14	121	3.75	32	433616	163	3.75	43	221	3.75	59
DVC.1-20-14-15-SST-M6-18-55	20	15	M6	14	18	18	211	3.75	56	433631	273	3.75	73	325	3.75	87
DVC.1-20-14-19-SST-M6-18-55	20	19	M6	14	18	25	193	4.75	41	433633	238	4.75	50	302	4.75	64
DVC.1-20-14-20-SST-M6-18-55	20	20	M6	14	18	26	191	5	38	433635	231	5	46	300	5	60
DVC.1-21-16-22-SST-M6-18-55	21	22	M6	16	18	28	205	5.5	37	433641	205	5.5	37	315	5.5	57
DVC.1-20-12-30-SST-M6-18-55	20	30	M6	12	18	30	126	7.5	17	433621	280	7.5	37	217	7.5	29
DVC.1-20-14-30-SST-M6-18-55	20	30	M6	14	18	32	475	7.5	63	433637	507	7.5	68	301	7.5	40
DVC.1-25-18-20-SST-M6-18-55	25	20	M6	18	18	31	539	5	108	433651	887	5	177	1332	5	266
DVC.1-25-20-20-SST-M6-18-55	25	20	M6	20	18	33	560	5	112	433656	560	5	112	1380	5	276
DVC.1-30-22-20-SST-M8-20-55	30	20	M8	22	20	45	738	5	148	433666	1087	5	217	2005	5	401
DVC.1-30-18-25-SST-M8-20-55	30	25	M8	18	20	50	436	6.25	70	433661	671	6.25	107	1342	6.25	215
DVC.1-35-31-15-SST-M8-20-55	35	15	M8	31	20	46	1120	3.75	299	433676	2097	3.75	559	3215	3.75	857
DVC.1-35-25-34-SST-M8-20-55	35	34	M8	25	20	56	1073	8.5	126	433671	1564	8.5	184	2415	8.5	284
DVC.1-40-30-25-SST-M8-23-55	40	25	M8	30	23	58	1823	6.25	292	433685	2430	6.25	389	3378	6.25	540
DVC.1-40-25-30-SST-M8-23-55	40	30	M8	25	23	64	937	7.5	125	433683	1621	7.5	216	2246	7.5	299
DVC.1-40-33-30-SST-M8-23-55	40	30	M8	33	23	68	1007	7.5	134	433689	1873	7.5	250	2423	7.5	323
DVC.1-40-20-48-SST-M8-23-55	40	48	M8	20	23	76	498	12	42	433681	705	12.5	56	1123	12	94
DVC.1-40-32-50-SST-M8-23-55	40	50	M8	32	23	82	521	12.5	42	433687	795	12.5	64	1321	12.5	106
DVC.1-50-46-15-SST-M10-28-55	50	15	M10	46	28	94	1027	3.75	274	433696	2430	3.75	648	3385	3.75	903
DVC.1-50-42-30-SST-M10-28-55	50	30	M10	42	28	184	1095	7.5	146	433691	1523	7.5	203	2271	7.5	303
DVC.1-55-44-45-SST-M10-28-55	55	45	M10	44	28	233	911	11.25	81	433693	1328	11.25	118	1974	11.25	175
DVC.1-57-25-45-SST-M10-28-55	57	45	M10	25	28	242	902	11.25	80	433701	1222	11.25	109	1765	11.25	157
DVC.1-60-49-60-SST-M10-28-55	60	60	M10	49	28	264	2188	15	146	433706	3785	15	252	4325	15	288
DVC.1-70-45-53-SST-M12-37-55	70	53	M12	45	37	280	1897	13.25	143	433711	2114	13.25	160	3228	13.25	244
DVC.1-72-64-33.5-SST-M12-37-55	72	33.5	M12	64	37	297	2875	8.38	343	433716	4170	8.38	498	7315	8.38	873
DVC.1-75-60-40-SST-M12-37-55	75	40	M12	60	37	380	2409	10	241	433721	3610	10	361	6988	10	699
DVC.1-95-80-75-SST-M16-41-55	95	75	M16	80	41	1090	7584	18.75	404	433726	10865	18.75	579	13263	18.75	707



Machine elements 9



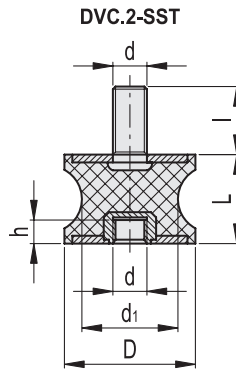
\* Complete the description with the desired hardness:  
40, 55 or 70 tolerance  $\pm 5$  Shore A.

DVC.2 - 10 - 8 - 10 - M4 - 10 - 55  
 D d<sub>1</sub> L d I Shore A

Description	D	L	d	d <sub>1</sub>	I	h	⚖	Hardness 40 Shore A			Hardness 55 Shore A			Hardness 70 Shore A					
								Code	Max load [N]	Max deflection [mm]	Stiffness [N/mm]	Code	Max load [N]	Max deflection [mm]	Stiffness [N/mm]	Code	Max load [N]	Max deflection [mm]	Stiffness [N/mm]
DVC.2-10-8-10-M4-10-*	10	10	M4	8	10	4	3	433901	94	2,5	37	433751	43	2,5	17	434051	81	2,5	32
DVC.2-15-8,5-15-M4-10-*	15	15	M4	8,5	10	4	5	433911	81	3,75	22	433761	132	3,75	35	434061	180	3,75	48
DVC.2-15-12-15-M4-10-*	15	15	M4	12	10	4	6	433916	132	3,75	35	433766	142	3,75	38	434066	191	3,75	51
DVC.2-20-14-15-M6-18-*	20	15	M6	14	18	6	14	433923	191	3,75	51	433773	247	3,75	66	434073	319	3,75	85
DVC.2-20-14-19-M6-18-*	20	19	M6	14	18	6	16	433925	319	4,75	67	433775	226	4,75	48	434075	278	4,75	59
DVC.2-20-14-20-M6-18-*	20	20	M6	14	18	6	17	433927	278	5	56	433777	223	5	45	434077	270	5	54
DVC.2-21-16-22-M6-18-*	21	22	M6	16	18	6	18	433931	270	5,5	49	433781	240	5,5	44	434081	314	5,5	57
DVC.2-20-12-30-M6-18-*	20	30	M6	12	18	6	22	433921	240	7,5	32	433771	147	7,5	20	434071	227	7,5	30
DVC.2-20-14-30-M6-18-*	20	30	M6	14	18	6	25	433929	173	7,5	23	433779	255	7,5	34	434079	380	7,5	51
DVC.2-25-18-20-M6-18-*	25	20	M6	18	18	6	36	433941	593	5	119	433791	631	5	126	434091	1038	5	208
DVC.2-25-20-20-M6-18-*	25	20	M6	20	18	6	39	433946	1038	5	208	433796	655	5	131	434096	1055	5	211
DVC.2-30-22-20-M8-20-*	30	20	M8	22	20	8	44	433956	655	5	131	433806	863	5	173	434106	1272	5	254
DVC.2-30-18-25-M8-20-*	30	25	M8	18	20	8	49	433951	1272	6,25	203	433801	510	6,25	82	434101	785	6,25	126
DVC.2-35-31-15-M8-20-*	35	15	M8	31	20	8	46	433966	785	3,75	209	433816	1310	3,75	349	434116	2453	3,75	654
DVC.2-35-25-34-M8-20-*	35	34	M8	25	20	8	60	433961	2453	8,5	289	433811	1255	8,5	148	434111	1830	8,5	215
DVC.2-40-30-25-M8-23-*	40	25	M8	30	23	8	73	433975	1830	6,25	293	433825	2133	6,25	341	434125	2843	6,25	455
DVC.2-40-25-30-M8-23-*	40	30	M8	25	23	8	76	433973	2843	7,5	379	433823	1096	7,5	146	434123	1897	7,5	253
DVC.2-40-33-30-M8-23-*	40	30	M8	33	23	8	80	433979	861	7,5	115	433829	1178	7,5	157	434129	2191	7,5	292
DVC.2-40-20-48-M8-23-*	40	48	M8	20	23	8	86	433971	2191	12	183	433821	583	12	49	434121	825	12	69
DVC.2-40-32-50-M8-23-*	40	50	M8	32	23	8	94	433977	825	12,5	66	433827	610	12,5	49	434127	930	12,5	74
DVC.2-50-42-30-M10-28-*	50	30	M10	42	28	10	112	433981	2843	7,5	379	433831	1281	7,5	171	434131	1782	7,5	238
DVC.2-55-44-45-M10-28-*	55	45	M10	44	28	10	162	433986	1782	11,25	158	433836	1066	11,25	95	434136	1554	11,25	138
DVC.2-57-25-45-M10-28-*	57	45	M10	25	28	10	155	433991	1554	11,25	138	433841	1055	11,25	94	434141	1430	11,25	127
DVC.2-60-49-60-M10-28-*	60	60	M10	49	28	10	245	433996	1430	15	95	433846	2560	15	171	434146	4428	15	295
DVC.2-70-45-53-M12-37-*	70	53	M12	45	37	12	321	434001	4428	13,25	334	433851	2219	13,25	168	434151	2473	13,25	187
DVC.2-72-64-33,5-M12-37-*	72	33,5	M12	64	37	12	385	434006	2473	8,38	295	433856	3364	8,38	402	434156	4879	8,38	583
DVC.2-75-60-40-M12-37-*	75	40	M12	60	37	12	450	434011	4879	10	488	433861	2819	10	282	434161	4224	10	422
DVC.2-95-80-75-M16-41-*	95	75	M16	80	41	16	740	434016	4224	18,75	225	433866	8873	18,75	473	434166	12712	18,75	678



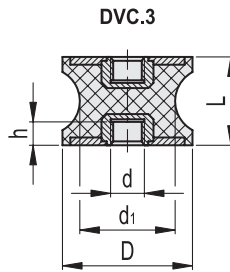
Machine elements 9



DVC.2 - 10 - 8 - 10 - SST - M4 - 10 - 55  
 D d1 L Stainless steel d l Shore A

STAINLESS STEEL

Description	D	L	d	d1	l	h	⚖	Hardness 40 Shore A			Hardness 55 Shore A			Hardness 70 Shore A				
								Code	Max load [N]	Max deflection [mm]	Stiffness [N/mm]	Code	Max load [N]	Max deflection [mm]	Stiffness [N/mm]	Code	Max load [N]	Max deflection [mm]
DVC.2-10-8-10-SST-M4-10-55	10	10	M4	8	10	4	3	94	2.5	37	434201	115	2.5	46	81	2.5	32	
DVC.2-15-8,5-15-SST-M4-10-55	15	15	M4	8,5	10	4	5	94	2.5	37	434211	242	3,75	65	81	2,5	32	
DVC.2-15-12-15-SST-M4-10-55	15	15	M4	12	10	4	6	81	3,75	22	434216	259	3,75	69	180	3,75	48	
DVC.2-20-14-15-SST-M6-18-55	20	15	M6	14	18	6	14	132	3,75	35	434223	380	3,75	101	191	3,75	51	
DVC.2-20-14-19-SST-M6-18-55	20	19	M6	14	18	6	16	191	3,75	51	434225	353	4,75	74	319	3,75	85	
DVC.2-20-14-20-SST-M6-18-55	20	20	M6	14	18	6	17	319	4,75	67	434227	351	5	70	278	4,75	59	
DVC.2-21-16-22-SST-M6-18-55	21	22	M6	16	18	6	18	278	5	56	434231	369	5,5	67	270	5	54	
DVC.2-20-12-30-SST-M6-18-55	20	30	M6	12	18	6	22	270	5,5	49	434221	254	7,5	34	314	5,5	57	
DVC.2-20-14-30-SST-M6-18-55	20	30	M6	14	18	6	25	240	7,5	32	434229	255	7,5	34	227	7,5	30	
DVC.2-25-18-20-SST-M6-18-55	25	20	M6	18	18	6	36	328	7,5	44	434241	1558	5	312	236	7,5	32	
DVC.2-25-20-20-SST-M6-18-55	25	20	M6	20	18	6	39	593	5	119	434246	1615	5	323	1038	5	208	
DVC.2-30-22-20-SST-M8-20-55	30	20	M8	22	20	8	44	1038	5	208	434256	2346	5	469	1055	5	211	
DVC.2-30-18-25-SST-M8-20-55	30	25	M8	18	20	8	49	ON REQUEST	655	5	131	434251	1570	6,25	251	1272	5	254
DVC.2-35-31-15-SST-M8-20-55	35	15	M8	31	20	8	46	1272	6,25	203	434266	3762	3,75	1003	785	6,25	126	
DVC.2-35-25-34-SST-M8-20-55	35	34	M8	25	20	8	60	785	3,75	209	434261	2826	8,5	332	2453	3,75	654	
DVC.2-40-30-25-SST-M8-23-55	40	25	M8	30	23	8	73	2453	8,5	289	434275	3952	6,25	632	1830	8,5	215	
DVC.2-40-25-30-SST-M8-23-55	40	30	M8	25	23	8	76	1830	6,25	293	434273	2628	7,5	350	2843	6,25	455	
DVC.2-40-33-30-SST-M8-23-55	40	30	M8	33	23	8	80	2843	7,5	379	434279	2835	7,5	378	1897	7,5	253	
DVC.2-40-20-48-SST-M8-23-55	40	48	M8	20	23	8	86	1897	7,5	253	434271	1314	12	109	2191	7,5	292	
DVC.2-40-32-50-SST-M8-23-55	40	50	M8	32	23	8	94	2191	12	183	434277	1546	12,5	124	825	12	69	
DVC.2-50-42-30-SST-M10-28-55	50	30	M10	42	28	10	112	825	12,5	66	434281	2657	7,5	354	930	12,5	74	
DVC.2-55-44-45-SST-M10-28-55	55	45	M10	44	28	10	162	2843	7,5	379	434286	2310	11,25	205	1782	7,5	238	
DVC.2-57-25-45-SST-M10-28-55	57	45	M10	25	28	10	155	1782	11,25	158	434291	2065	11,25	184	1554	11,25	138	
DVC.2-60-49-60-SST-M10-28-55	60	60	M10	49	28	10	245	1554	11,25	138	434296	5060	15	337	1430	11,25	127	
DVC.2-70-45-53-SST-M12-37-55	70	53	M12	45	37	12	321	1430	15	95	434301	3777	13,25	285	4428	15	295	
DVC.2-72-64-33-5-SST-M12-37-55	72	33,5	M12	64	37	12	385	4428	13,25	334	434306	8559	8,38	1022	2473	13,25	187	
DVC.2-75-60-40-SST-M12-37-55	75	40	M12	60	37	12	450	2473	8,38	295	434311	8176	10	818	4879	8,38	583	
DVC.2-95-80-75-SST-M16-41-55	95	75	M16	80	41	16	740	4879	10	488	434316	15518	18,75	828	4224	10	422	



\* Complete the description with the desired hardness:  
40, 55 or 70 tolerance ±5 Shore A.

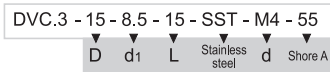
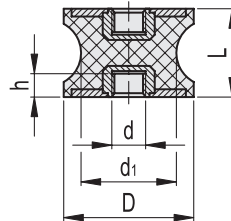
DVC.3 - 15 - 8.5 - 15 - M4 - 55  
 D d1 L d Shore A

Description	D	L	d	d1	h	⚖	Hardness 40 Shore A			Hardness 55 Shore A			Hardness 70 Shore A					
							Code	Max load [N]	Max deflection [mm]	Stiffness [N/mm]	Code	Max load [N]	Max deflection [mm]	Stiffness [N/mm]	Code	Max load [N]	Max deflection [mm]	Stiffness [N/mm]
DVC.3-15-8.5-15-M4.*	15	15	M4	8.5	4	6	434601	94	3.75	25	434501	155	3.75	41	434701	211	3.75	56
DVC.3-15-12-15-M4.*	15	15	M4	12	4	8	434606	155	3.75	41	434506	166	3.75	44	434706	223	3.75	60
DVC.3-20-14-15-M6.*	20	15	M6	14	6	13	434613	223	3.75	60	434513	289	3.75	77	434713	374	3.75	100
DVC.3-20-14-19-M6.*	20	19	M6	14	6	16	434615	374	4.75	79	434515	264	4.75	56	434715	326	4.75	69
DVC.3-20-14-20-M6.*	20	20	M6	14	6	17	434617	326	5	65	434517	261	5	52	434717	316	5	63
DVC.3-21-16-22-M6.*	21	22	M6	16	6	18	434621	316	5.5	57	434521	281	5.5	51	434721	367	5.5	67
DVC.3-20-12-30-M6.*	20	30	M6	12	6	19	434611	281	7.5	37	434511	172	7.5	23	434711	266	7.5	35
DVC.3-20-14-30-M6.*	20	30	M6	14	6	23	434619	383	7.5	51	434519	650	7.5	87	434719	277	7.5	37
DVC.3-25-18-20-M6.*	25	20	M6	18	6	27	434631	694	5	139	434531	738	5	148	434731	1214	5	243
DVC.3-25-20-20-M6.*	25	20	M6	20	6	30	434636	1214	5	243	434536	767	5	153	434736	1235	5	247
DVC.3-30-22-20-M8.*	30	20	M8	22	8	39	434643	767	5	153	434543	1010	5	202	434743	1488	5	298
DVC.3-30-18-25-M8.*	30	25	M8	18	8	42	434641	1488	6.25	238	434541	597	6.25	95	434741	919	6.25	147
DVC.3-35-25-34-M8.*	35	34	M8	25	8	53	434645	2871	8.5	338	434545	1469	8.5	173	434745	2141	8.5	252
DVC.3-40-30-25-M8.*	40	25	M8	30	8	64	434655	2141	6.25	343	434555	2496	6.25	399	434755	3326	6.25	532
DVC.3-40-25-30-M8.*	40	30	M8	25	8	72	434653	3326	7.5	444	434553	1283	7.5	171	434753	2219	7.5	296
DVC.3-40-33-30-M8.*	40	30	M8	33	8	80	434659	2219	7.5	296	434559	1378	7.5	184	434759	2564	7.5	342
DVC.3-40-32-50-M8.*	40	50	M8	32	8	98	434657	2564	12.5	205	434557	682	12.5	55	434757	965	12.5	77
DVC.3-40-20-48-M8.*	40	48	M8	20	8	86	434651	965	12	80	434551	713	12	59	434751	1088	12	91
DVC.3-50-42-30-M10.*	50	30	M10	42	10	125	434656	3326	7.5	444	434556	1499	7.5	200	434756	2085	7.5	278
DVC.3-55-44-45-M10.*	55	45	M10	44	10	150	434661	2085	11.25	185	434561	1247	11.25	111	434761	1818	11.25	162
DVC.3-57-25-45-M10.*	57	45	M10	25	10	140	434666	1818	11.25	162	434566	1235	11.25	110	434766	1673	11.25	149
DVC.3-60-49-60-M10.*	60	60	M10	49	10	310	434671	1673	15	112	434571	2995	15	200	434771	5181	15	345
DVC.3-70-45-53-M12.*	70	53	M12	45	12	336	434676	5181	13.25	391	434576	2597	13.25	196	434776	2894	13.25	218
DVC.3-72-64-33-5-M12.*	72	33.5	M12	64	12	342	434681	2894	8.38	346	434581	3936	8.38	470	434781	5708	8.38	682
DVC.3-75-60-40-M12.*	75	40	M12	60	12	360	434686	5708	10	571	434586	3298	10	330	434786	4942	10	494
DVC.3-95-80-75-M16.*	95	75	M16	80	16	690	434691	4942	18.75	264	434591	10382	18.75	554	434791	14873	18.75	793



Machine elements 9

DVC.3-SST



STAINLESS STEEL

Description	D	L	d	d <sub>1</sub>	h	△	Hardness 40 Shore A			Hardness 55 Shore A			Hardness 70 Shore A					
							Code	Max load [N]	Max deflection [mm]	Stiffness [N/mm]	Code	Max load [N]	Max deflection [mm]	Stiffness [N/mm]	Code	Max load [N]	Max deflection [mm]	Stiffness [N/mm]
DVC.3-15-8.5-15-SST-M4-55	15	15	M4	8.5	4	6		94	3,75	25	434801	283	3,75	76		211	3,75	56
DVC.3-15-12-15-SST-M4-55	15	15	M4	12	4	8		94	3,75	25	434806	303	3,75	81		211	3,75	56
DVC.3-20-14-15-SST-M6-55	20	15	M6	14	6	13		155	3,75	41	434813	445	3,75	119		223	3,75	60
DVC.3-20-14-19-SST-M6-55	20	19	M6	14	6	16		223	3,75	60	434815	413	4,75	87		374	3,75	100
DVC.3-20-14-20-SST-M6-55	20	20	M6	14	6	17		374	4,75	79	434817	411	5	82		326	4,75	69
DVC.3-21-16-22-SST-M6-55	21	22	M6	16	6	18		326	5	65	434821	431	5,5	78		316	5	63
DVC.3-20-12-30-SST-M6-55	20	30	M6	12	6	19		316	5,5	57	434811	297	7,5	40		367	5,5	67
DVC.3-20-14-30-SST-M6-55	20	30	M6	14	6	23		281	7,5	37	434819	412	7,5	55		266	7,5	35
DVC.3-25-18-20-SST-M6-55	25	20	M6	18	6	27		383	7,5	51	434831	1823	5	365		277	7,5	37
DVC.3-25-20-20-SST-M6-55	25	20	M6	20	6	30		694	5	139	434836	1889	5	378		1214	5	243
DVC.3-30-22-20-SST-M8-55	30	20	M8	22	8	39	ON REQUEST	1214	5	243	434843	2745	5	549	ON REQUEST	1235	5	247
DVC.3-30-18-25-SST-M8-55	30	25	M8	18	8	42		767	5	153	434841	1837	6,25	294		1488	5	298
DVC.3-35-25-34-SST-M8-55	35	34	M8	25	8	53		1488	6,25	238	434845	3306	8,5	389		919	6,25	147
DVC.3-40-30-25-SST-M8-55	40	25	M8	30	8	64		2871	8,5	338	434855	4624	6,25	740		2141	8,5	252
DVC.3-40-25-30-SST-M8-55	40	30	M8	25	8	72		2141	6,25	343	434853	3075	7,5	410		3326	6,25	532
DVC.3-40-33-30-SST-M8-55	40	30	M8	33	8	80		3326	7,5	444	434859	3317	7,5	442		2219	7,5	296
DVC.3-40-32-50-SST-M8-55	40	50	M8	32	8	98		2219	7,5	296	434857	1537	12,5	123		2564	7,5	342
DVC.3-40-20-48-SST-M8-55	40	48	M8	20	8	86		2564	12,5	205	434851	1808	12	151		965	12,5	77
DVC.3-50-42-30-SST-M10-55	50	30	M10	42	10	125		965	12	80	434856	3109	7,5	415		1088	12	91
DVC.3-55-44-45-SST-M10-55	55	45	M10	44	10	150		3326	7,5	444	434861	2702	11,25	240		2085	7,5	278
DVC.3-57-25-45-SST-M10-55	57	45	M10	25	10	140	2085	11,25	185	434866	2416	11,25	215	1818	11,25	162		
DVC.3-60-49-60-SST-M10-55	60	60	M10	49	10	310	1818	11,25	162	434871	5920	15	395	1673	11,25	149		
DVC.3-70-45-53-SST-M12-55	70	53	M12	45	12	336	1673	15	112	434876	4419	13,25	333	5181	15	345		
DVC.3-72-64-33,5-SST-M12-55	72	33,5	M12	64	12	342	5181	13,25	391	434881	10014	8,38	1196	2894	13,25	218		
DVC.3-75-60-40-SST-M12-55	75	40	M12	60	12	360	2894	8,38	346	434886	9566	10	957	5708	8,38	682		
DVC.3-95-80-75-SST-M16-55	95	75	M16	80	16	690	5708	10	571	434891	18156	18,75	968	4942	10	494		

## X-ON Electronics

Largest Supplier of Electrical and Electronic Components

*Click to view similar products for* [Electrical Enclosure Accessories](#) *category:*

*Click to view products by* [Elesa & Ganter](#) *manufacturer:*

Other Similar products are found below :

[60121-06-028 C-325 Black](#) [71884-04-028 CM3-100 Black](#) [71884-18-028 LH43-200 Black](#) [71884-24-028 LH75-200 Black](#) [71885-01-028 CM6-150 Black](#) [72459-02-028 DM-3 BLACK](#) [81501-01-000 XPL, 9VB Black](#) [82402-01 PT-8 ALUM](#) [1335GSKT3](#) [14101FP-PK](#) [CB-1263-BT](#) [1611512-4](#) [HB-11498](#) [RC-7775](#) [HM BLACK PANEL](#) [61033-01-000](#) [115123-01-508 CN-RL RS](#) [115124-01-508 CN-XRL XRS](#) [115119-01-000 CN-RL RS](#) [115123-01-000 CN-RL RS](#) [60121-04-028 C-275 Black](#) [60128-01-072](#) [60222-01-028 CM6-225 Black](#) [60272-01-028 CM3-150 Black](#) [60851-01-028 CM69-120 Black](#) [62291-502-000-KEU-10-BLK](#) [62452-01-000 HML-9VB, EB Black](#) [71884-25-028 LH89-130 Black](#) [AXX2POSTBRCKT](#) [FUPMESK](#) [71884-23-028 LH75-130 Black](#) [1317GSKTSC](#) [8G813V40389](#) [DVA.1-10-15-M4-10-70](#) [DVC.1-60-49-60-M10-28-55](#) [DVC.1-15-8,5-15-M4-10-40](#) [DVC.1-20-12-30-M6-18-40](#) [DVC.1-30-18-25-M8-20-40](#) [DVC.1-35-31-15-M8-20-40](#) [DVC.1-35-31-15-M8-20-70](#) [DVC.1-75-60-40-M12-37-70](#) [DVC.2-30-22-20-M8-20-55](#) [DVC.2-40-30-25-M8-23-55](#) [DVC.2-75-60-40-M12-37-55](#) [DVC.2-21-16-22-M6-18-40](#) [DVC.2-40-20-48-M8-23-40](#) [DVC.2-40-32-50-M8-23-40](#) [DVC.2-20-14-19-M6-18-70](#) [DVC.2-25-18-20-M6-18-70](#) [DVC.3-20-14-20-M6-40](#) [DVC.3-20-14-30-M6-40](#)